

NOTES:

1- TRAVELED WAY SHADED TO REPRESENT LANE NUMBERING
SEE CROSS-SECTIONS FOR SHOULDER DIMENSIONS

McElhanney
Consulting Services Ltd.
#108 - 14215 - 118th Ave.
Edmonton, Alberta, Canada T6E 4G6
Tel: (780) 461-9420 Fax: (780) 462-7088

THE CITY OF
Edmonton
TRANSPORTATION

Drawn by NG	Region:
Design by SP	Highway District:
Checked by DN	Municipality:
Approved by DN	Date July 2001

VERTICAL

HORIZONTAL

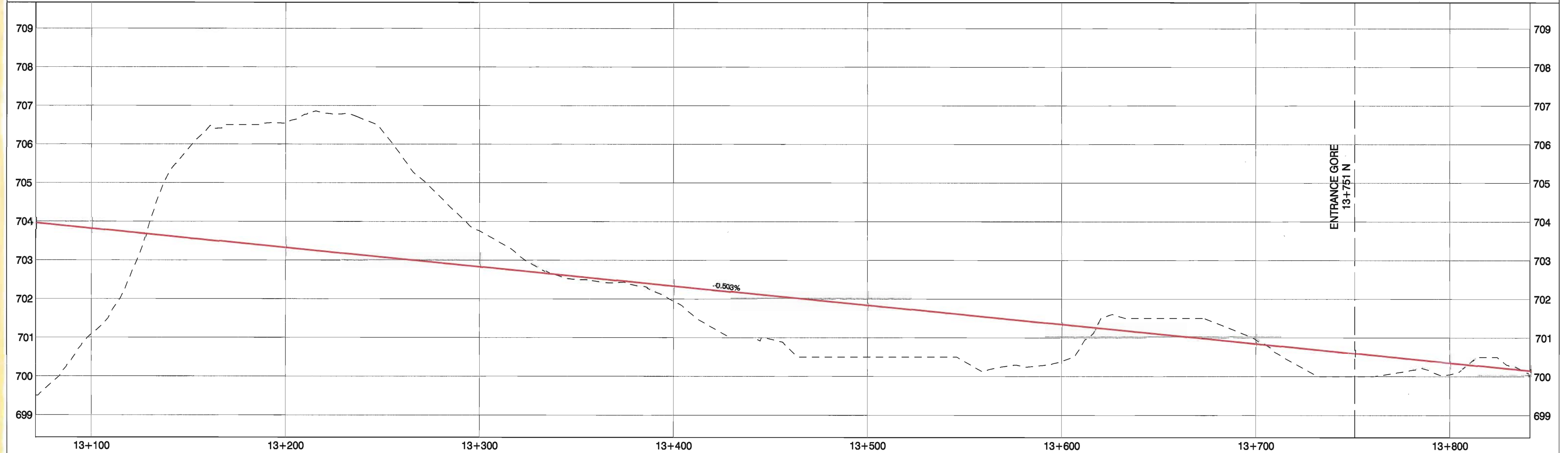
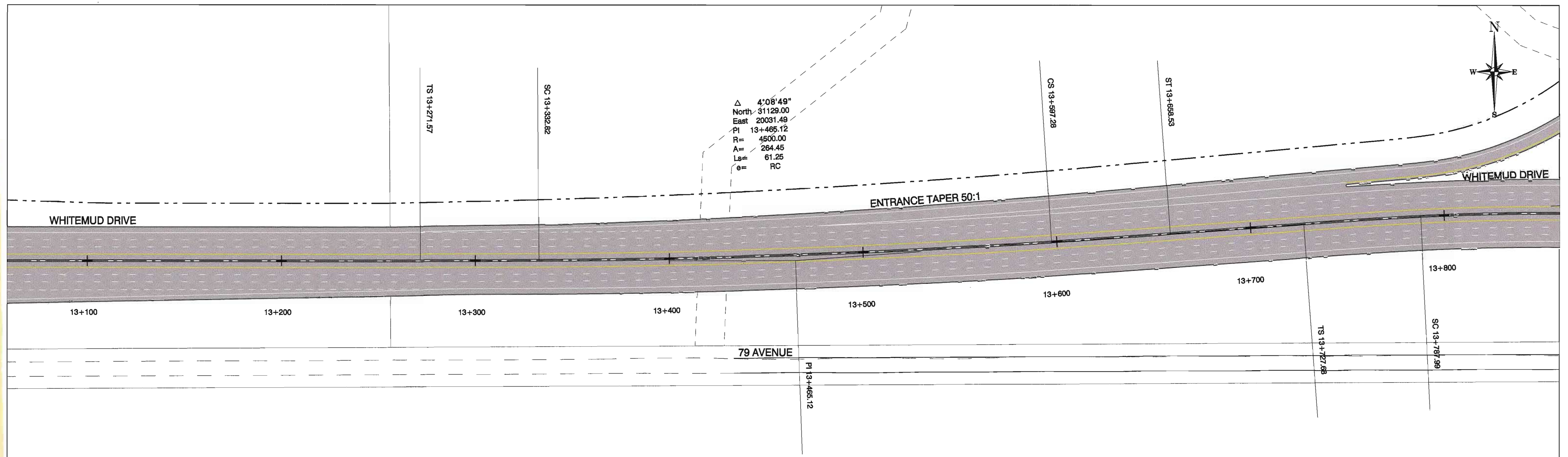
Project No.

Exhibit 9: Plan & Profile
Stage 3

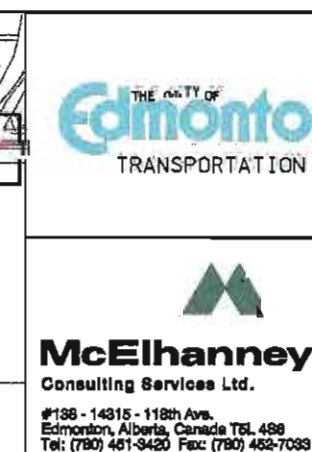
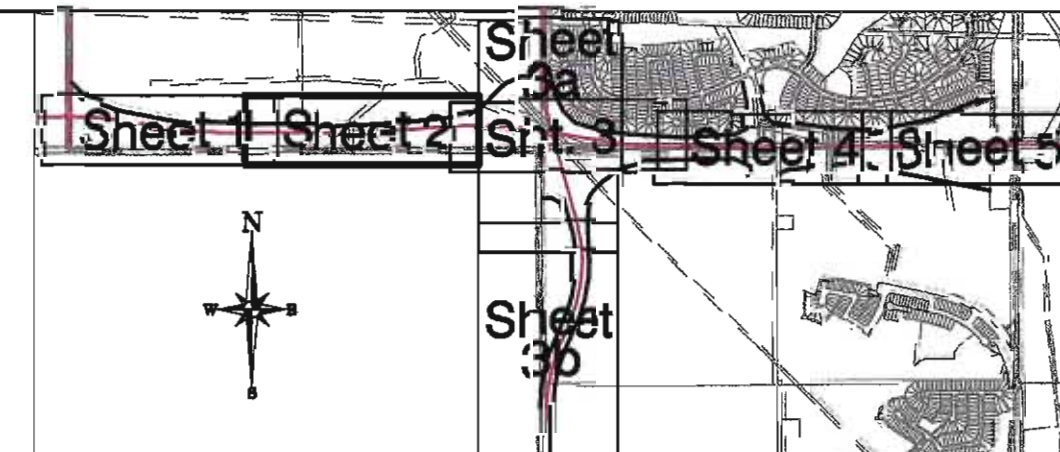
Whitemud Drive Extension
Concept Planning Study

MCSL No. 2101-00010-0 Sheet 1 of 5

NWHI - 0115



NOTES:
1- TRAVELED WAY SHADED TO REPRESENT LANE NUMBERS,
SEE CROSS-SECTIONS FOR SHOULDER DIMENSIONS

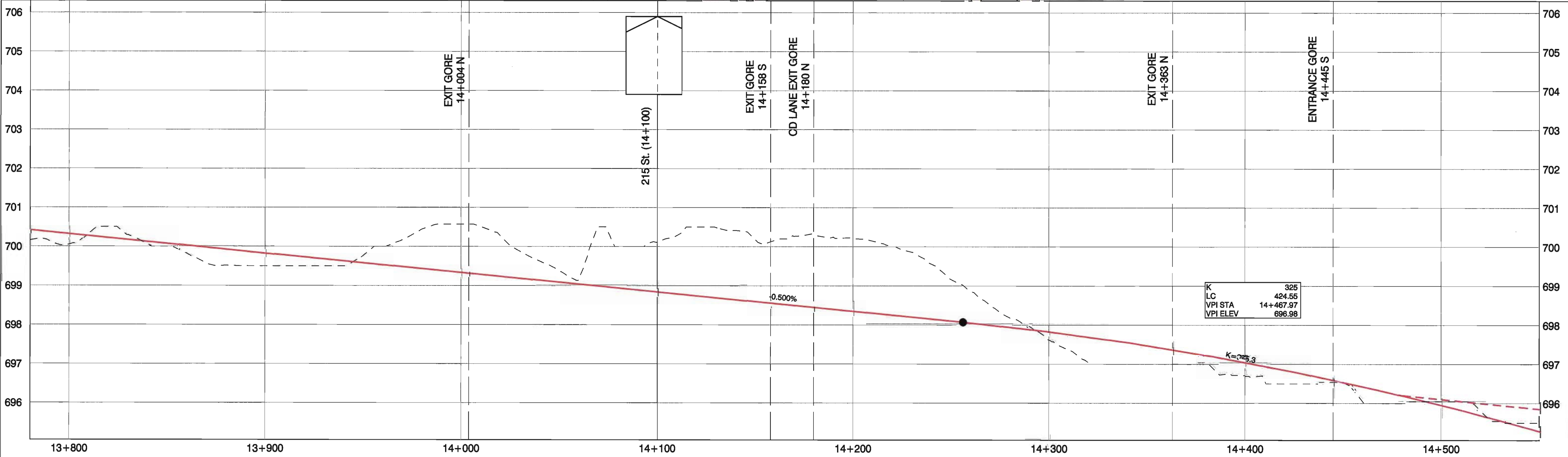
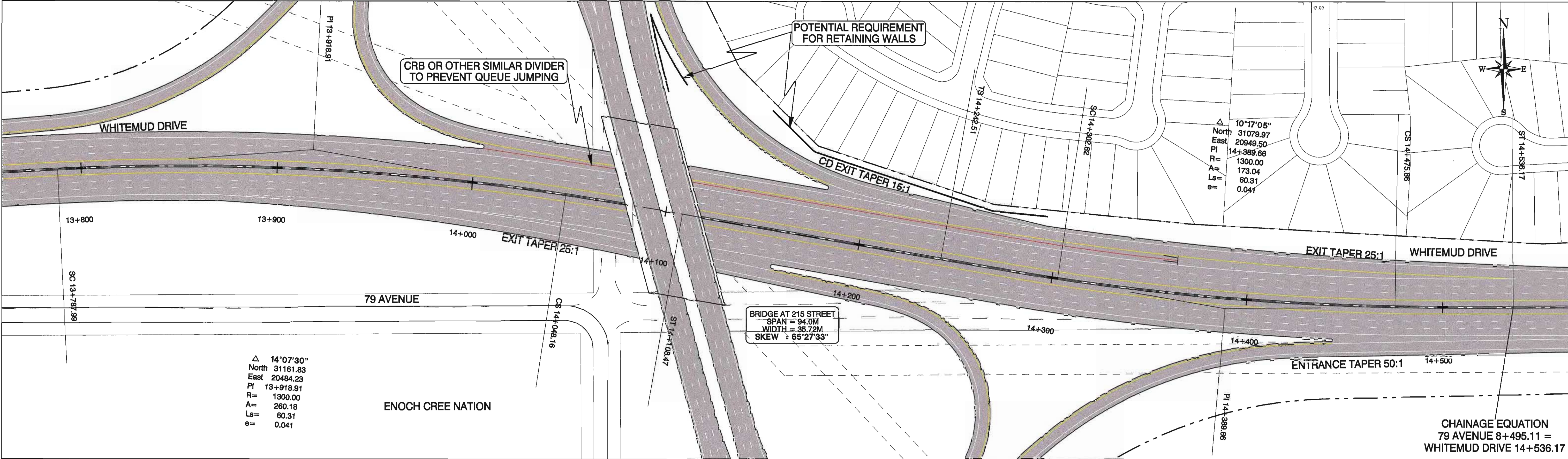


Drawn by NG	Region:
Design by SP	Highway District:
Checked by DN	Municipality:
Approved by DN	Date July 2001
0.5m 0 1m 10m 0 20m	VERTICAL HORIZONTAL
Project No.	

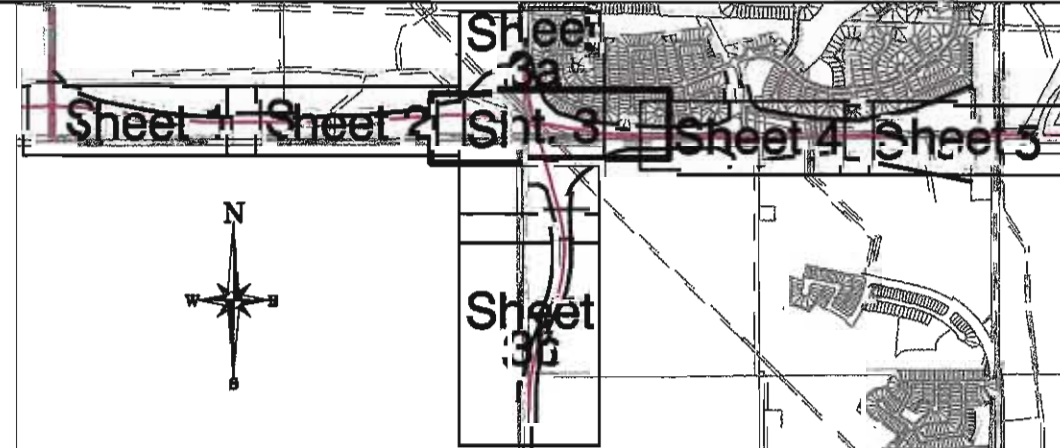
Exhibit 9: Plan & Profile
Stage 3
Whitemud Drive Extension
Concept Planning Study

MOCL No. 2131-00010-0 Sheet 2 of 5

NWHI-2116



NOTES:
1- TRAVELED WAY SHADED TO REPRESENT LANE NUMBERS,
SEE CROSS-SECTIONS FOR SHOULDER DIMENSIONS



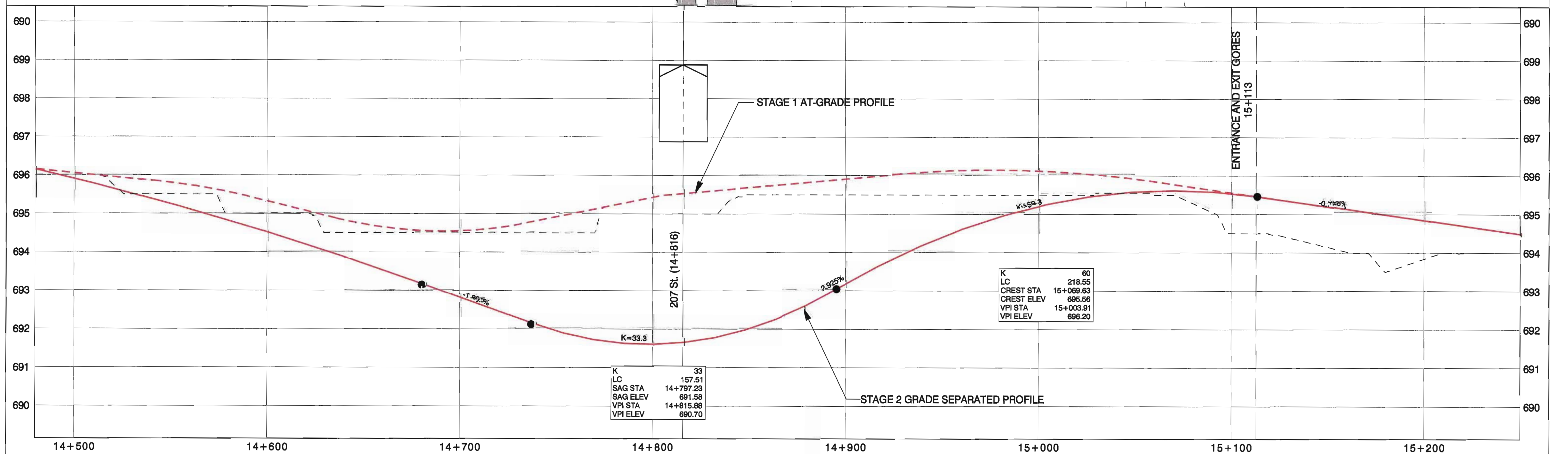
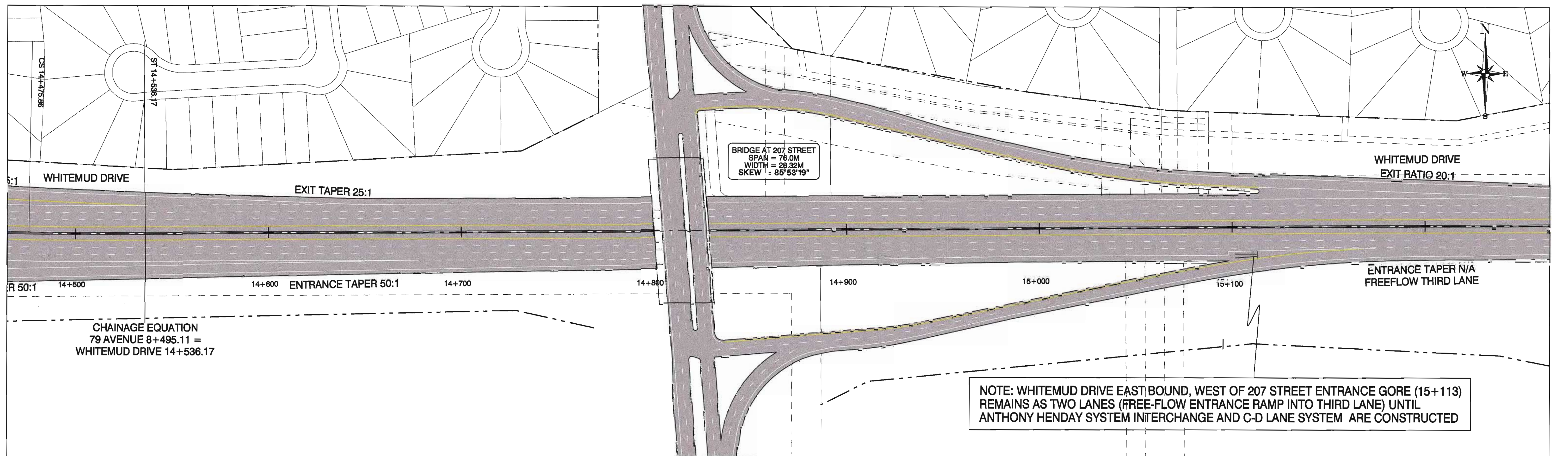
Drawn by NG	Region:
Design by SP	Highway District:
Checked by DN	Municipality:
Approved by DN	Date July 2001
Project No.	

Exhibit 9: Plan & Profile Stage 3

Whitemud Drive Extension
Concept Planning Study

MCSL No. 2101-00010-0 Sheet 3 of 5

NWHI-0117



NOTES:

1- TRAVELED WAY SHADED TO REPRESENT LANE NUMBERS, SEE CROSS-SECTIONS FOR SHOULDER DIMENSIONS

THE CITY OF
Edmonton
TRANSPORTATION

McElhanney
Consulting Services Ltd.
2100 - 14070 - 118th Ave.
Edmonton, Alberta, Canada T6L 4B8
Tel: (780) 461-5420 Fax: (780) 462-7028

Drawn by NG	Region:
Design by SP	Highway District:
Checked by DN	Municipality:
Approved by DN	Date July 2001

0.5m 0 1m 10m 0 20m

VERTICAL HORIZONTAL

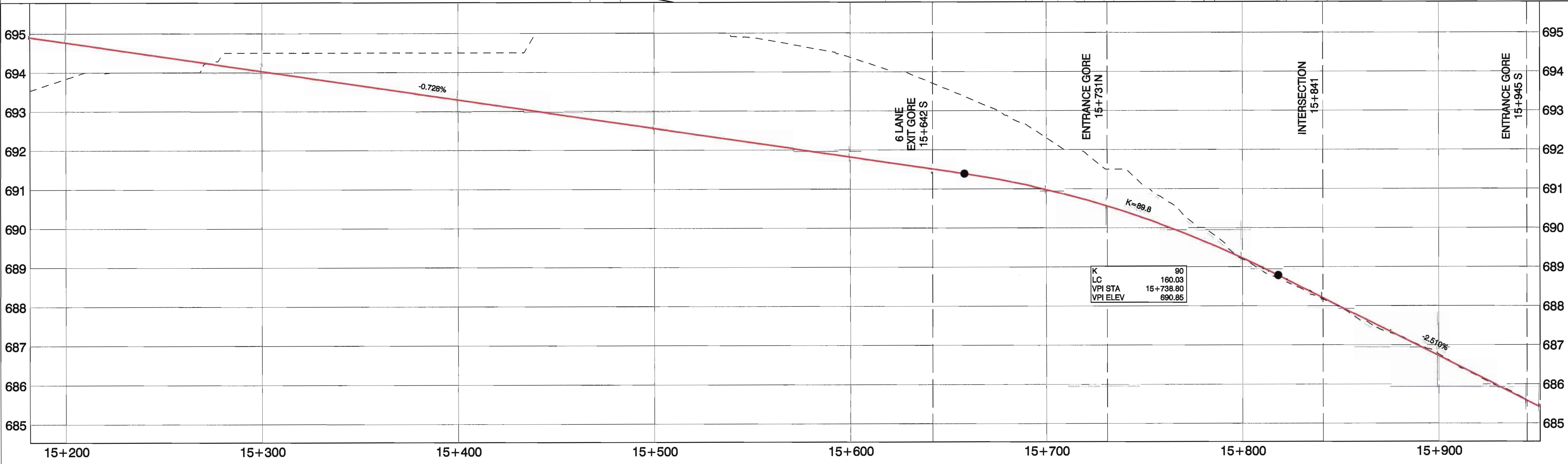
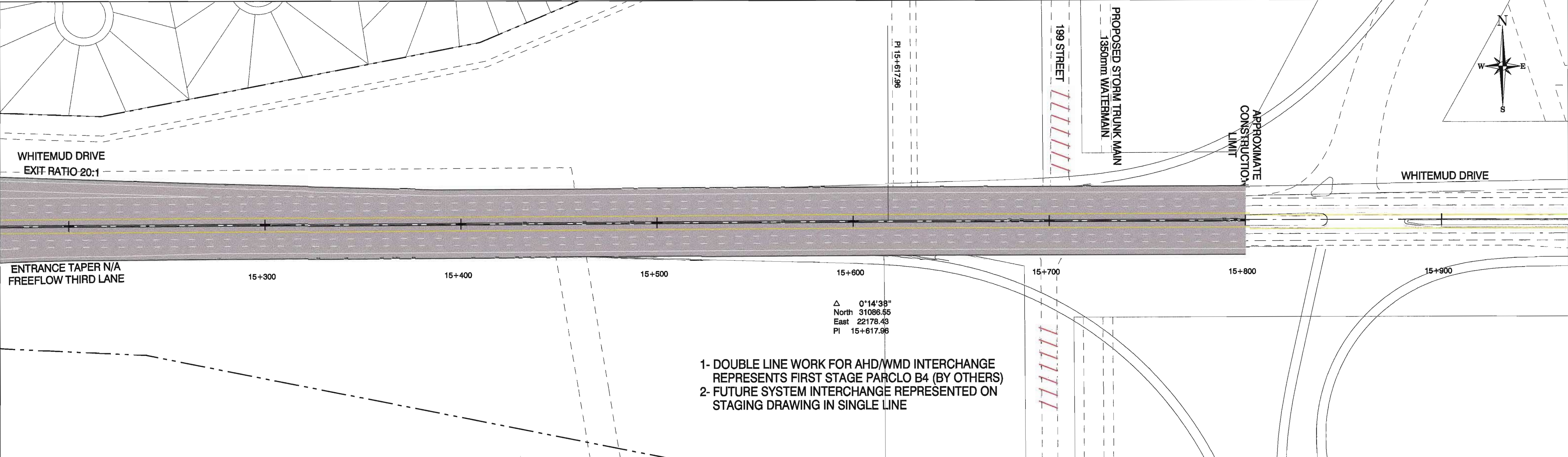
Project No.

Exhibit 9: Plan & Profile Stage 3

Whitemud Drive Extension Concept Planning Study

~~MOCL No. 2101-00010-0~~ Sheet 4 of 5

NWHI - 0118



NOTES:

1- TRAVELED WAY SHADED TO REPRESENT LANE NUMBERS, SEE CROSS-SECTIONS FOR SHOULDER DIMENSIONS

City of Edmonton
TRANSPORTATION

McElhanney
Consulting Services Ltd.
#188 - 14015 - 118th Ave.
Edmonton, Alberta, Canada T6L 4B6
Tel: (780) 461-0462 Fax: (780) 462-7088

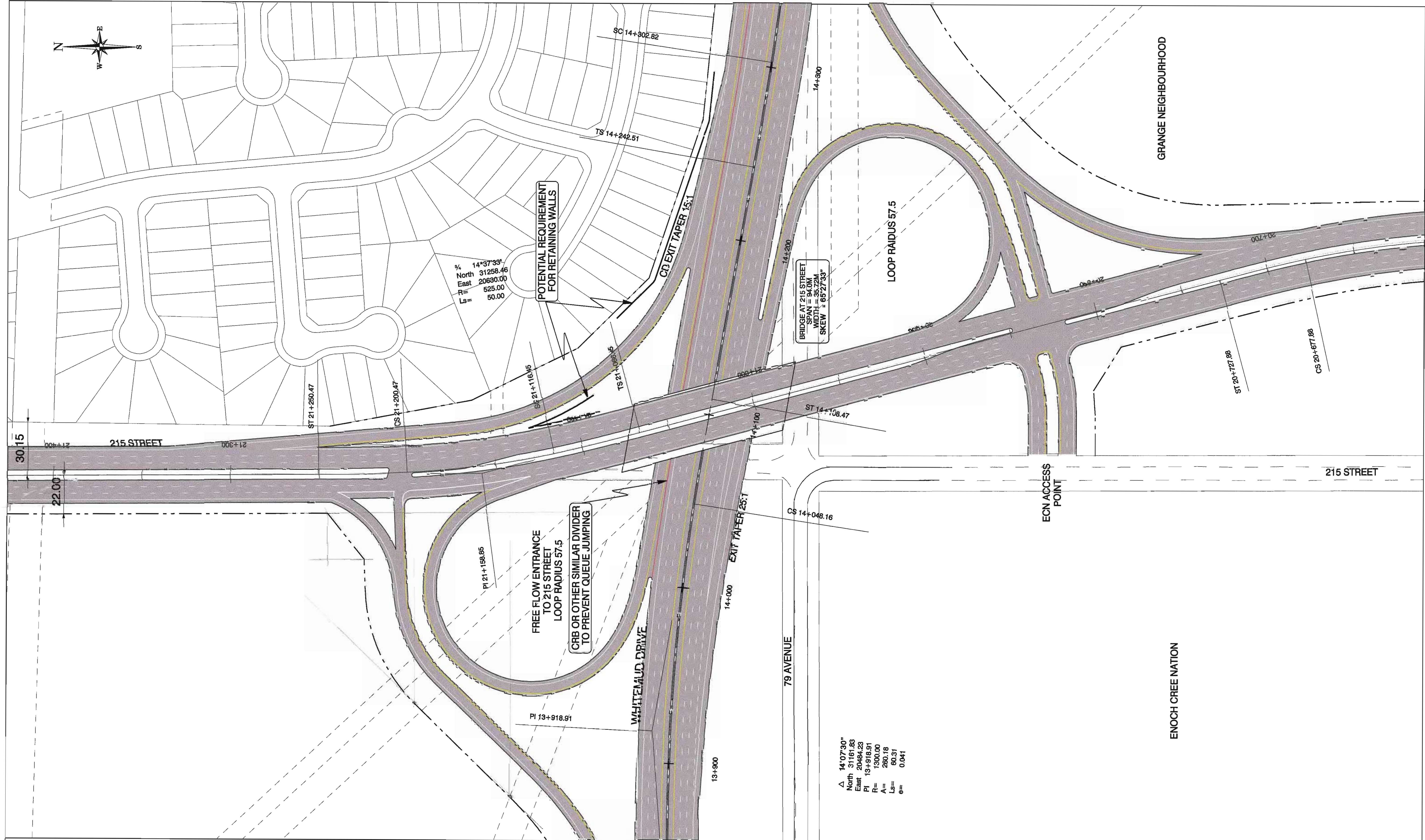
Drawn by NG	Region:
Design by SP	Highway District:
Checked by DN	Municipality:
Approved by DN	Date July 2001

0.5m 0 1m 10m 0 20m

VERTICAL HORIZONTAL

Project No.	MCSL No. 2131-00018-0 Sheet 5 of 5
-------------	------------------------------------

NWHI-0119



NOTES:
1- TRAVELED WAY SHADED TO REPRESENT LANE NUMBERS,
SEE CROSS-SECTIONS FOR SHOULDER DIMENSIONS



McElhanney
Consulting Services Ltd.
#108 - 14815 - 118th Ave.
Edmonton, Alberta, Canada T5L 4B8
Tel: (780) 441-2400 Fax: (780) 442-7088

Drawn by NG	Region:
Design by SP	Highway District:
Checked by DN	Municipality:
Approved by DN	Date July 2001
0.5m 0 1m 10m 0 20m	
VERTICAL	HORIZONTAL
Project No.	

**Exhibit 10.1: 215 St. at Stage 3
Overpass Concept**

**Whitemud Drive Extension
Concept Planning Study**

MCSL No. 2131-00018-0 Sheet 3a

NWHI - 0120