

WALTERDALE BRIDGE REPLACEMENT PROJECT UPDATE

(December 2012)

The City of Edmonton's new signature bridge will span the North Saskatchewan River and replace the existing Walterdale Bridge that was constructed in 1914.

DETAILED DESIGN COMPLETE

Detailed design is complete and the next phase, construction, will begin in early 2013. During the design phase, the project team used preliminary engineering results, including public input, to define and detail the construction scope of the project. Design work included the final bridge design, alignment, construction lay-down areas, associated road and shared use path connections, utility relocations, and requirements to protect cultural heritage and the environment.

Over the summer and fall, onsite activities took place on the north and south sides of the North Saskatchewan River. These included:

- Completion of pre-construction archaeological investigation for artifacts on the north and south banks of the river.
- Excavations at previously unrecorded prehistoric archaeological site FjPj-108.
- Supplemental geotechnical test hole drilling at both ends of the proposed new bridge to determine underlying soil and bedrock conditions for bridge thrust block foundations and the retaining wall on the north bank.
- Supplemental soil investigation and testing.
- Excavation of test pits within the upper portion of Dantzer's Hill (south side) to further determine the nature of existing materials and their suitability for roadway embankment.

Significant progress has also been made in securing the necessary approvals and permits from municipal, provincial and federal regulatory agencies.



CONSTRUCTION TIMELINE

Steel fabricators for the project were prequalified in November. A prequalification process for general contractors is in progress and will be completed in early January 2013. Bridge construction will begin in spring 2013. Preparation for bridge construction will begin with tree removal starting January 2, 2013, followed by the construction of temporary access roads and phase 1 river berms between January and March.

Bridge Construction Timeline	
2013-15	<ul style="list-style-type: none"> • Tree clearing • Construction of access roads/berms. • Reroute park trails. • Move interpretive belvedere. • Relocate utilities/construct drainage system. • Re-align portions of Queen Elizabeth Park Road and Walterdale Hill Road. • Bridge construction.
2015	<ul style="list-style-type: none"> • Grand opening of new bridge. • Demolition of old bridge.

TRANSFORMING | EDMONTON

BRINGING OUR CITY VISION TO LIFE

PUBLIC MEETING

A public meeting is scheduled for Thursday, **February 7, 2013** at the Old Timers' Cabin (9430 Scona Road). The project team will present the final detailed design, construction timelines and detours during construction. More information is available at www.edmonton.ca/walterdalebridge.

ABORIGINAL CONSULTATION

In an effort to preserve the project area's historic and cultural significance, consultation has been ongoing throughout the project with the Aboriginal community in Edmonton as well as with First Nations and Métis communities identified through the Province's *Historic Resources Act*. The City's Aboriginal Relations Office continues to assist with consultation.

Going forward, Aboriginal communities participating in the consultation and engagement process will be invited to carry out a ceremony prior to construction and to monitor pertinent excavation and in-river construction activities for the project.

Construction of the new bridge also requires relocation of the interpretive belvedere located in the Fort Edmonton Cemetery and Traditional Burial Ground at the northeast quadrant of the bridge. The temporary relocation of the interpretive belvedere will be based on input from the 21 Aboriginal communities that have been consulted throughout the project.



ROAD CLOSURES

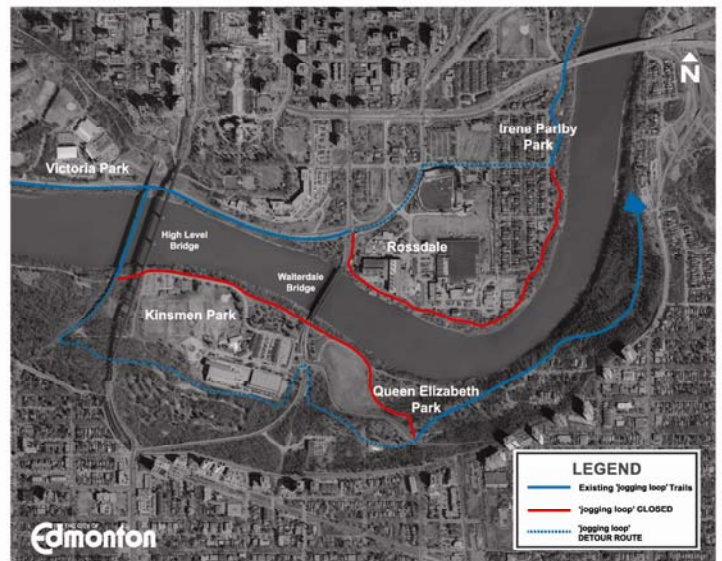
It is anticipated that Queen Elizabeth Park Road will be closed for the majority of the 2013 construction season. Details will be provided at the public meeting on **February 7**.

PEDESTRIAN/CYCLIST DETOURS

To assist with the safety of the public and trail users, some of the River Valley trails in the project area will need to be closed during construction to accommodate construction of the new bridge and associated utility and road works.

The lower portion of Queen Elizabeth Park, the gravel path in the lower portion of Kinsmen Park, and the area around the EPCOR Generating Station will be affected. For your safety, please stay away from the closed areas during construction.

Trail closure information is available on the Walterdale Bridge web page.



QUESTIONS?

Visit: www.edmonton.ca/walterdalebridge

Phone: 780-496-2812

Email: walterdalebridge@edmonton.ca

