

## OPTION 1 FEATURES

### South of Kinsmen Sports Centre (Old Strathcona)

- No direct impacts

### Proposed Bridge and Kinsmen Sports Centre Access

- 3 northbound lanes; 1 southbound lane; 1 cyclist/pedestrian trail
- No significant change to existing Kinsmen Sports Centre access
- Construction of new bridge will require closure of river crossing for an extended period

### North of River

- Minor modification to the River Valley Road intersection
- Replace 104 Street access to River Valley Road with 103 St. widening
- Burial grounds not impacted by bridge project; historical monument adjacent to existing bridge not impacted

## LEGEND

Proposed Roadway



Proposed Bridge



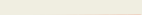
Proposed Kinsmen Sport Centre Access



Existing Trails

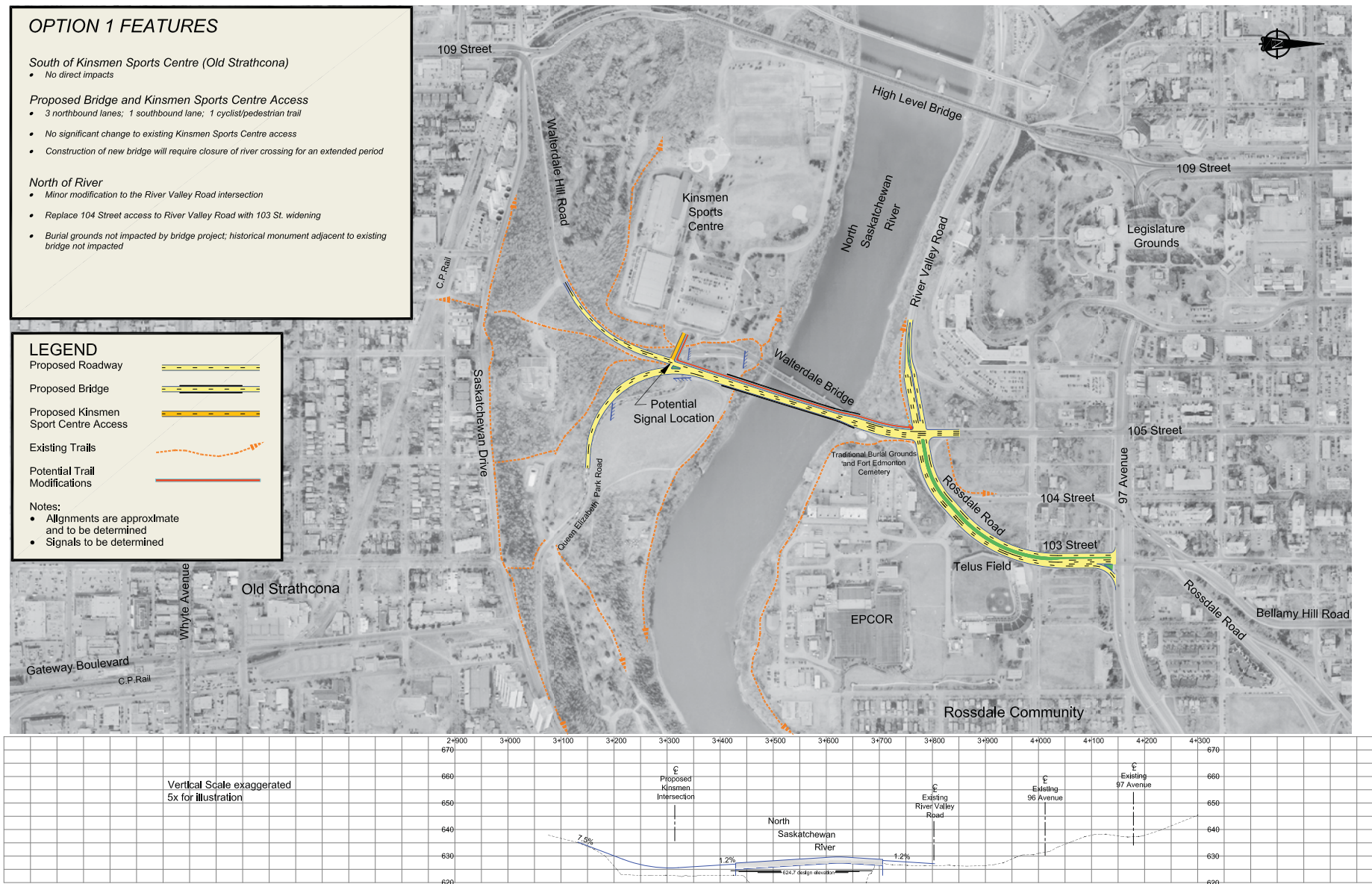


Potential Trail Modifications



### Notes:

- Alignments are approximate and to be determined
- Signals to be determined



# OPTION 1



## OPTION 2 FEATURES

### South of Kinsmen Sports Centre (Old Strathcona)

- Create a separation between Bus Barns and Gateway Boulevard
- Relocate Gateway Boulevard to 102 Street location, south of 83 Avenue
- Gateway Boulevard underpasses Saskatchewan Drive (Impacts End of Steel Park)
- New Southbound Access from Downtown

### Proposed Bridge and Kinsmen Sports Centre Access

- 3 northbound lanes; 1 southbound lane; 1 cyclist/pedestrian trail
- New Kinsmen Sports Centre access from north of the river via southbound lane
- Construction of new bridge may require closure of river crossing for an extended period

### North of River

- Minor modification to the River Valley Road intersection to provide southbound lane
- Replace 104 Street access to River Valley Road with 103 Street widening
- Burial grounds not impacted by bridge project; historical monument adjacent to existing bridge is impacted

## LEGEND

Proposed Roadway



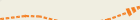
Proposed Bridge



Proposed Kinsmen Sport Centre Access



Existing Trails

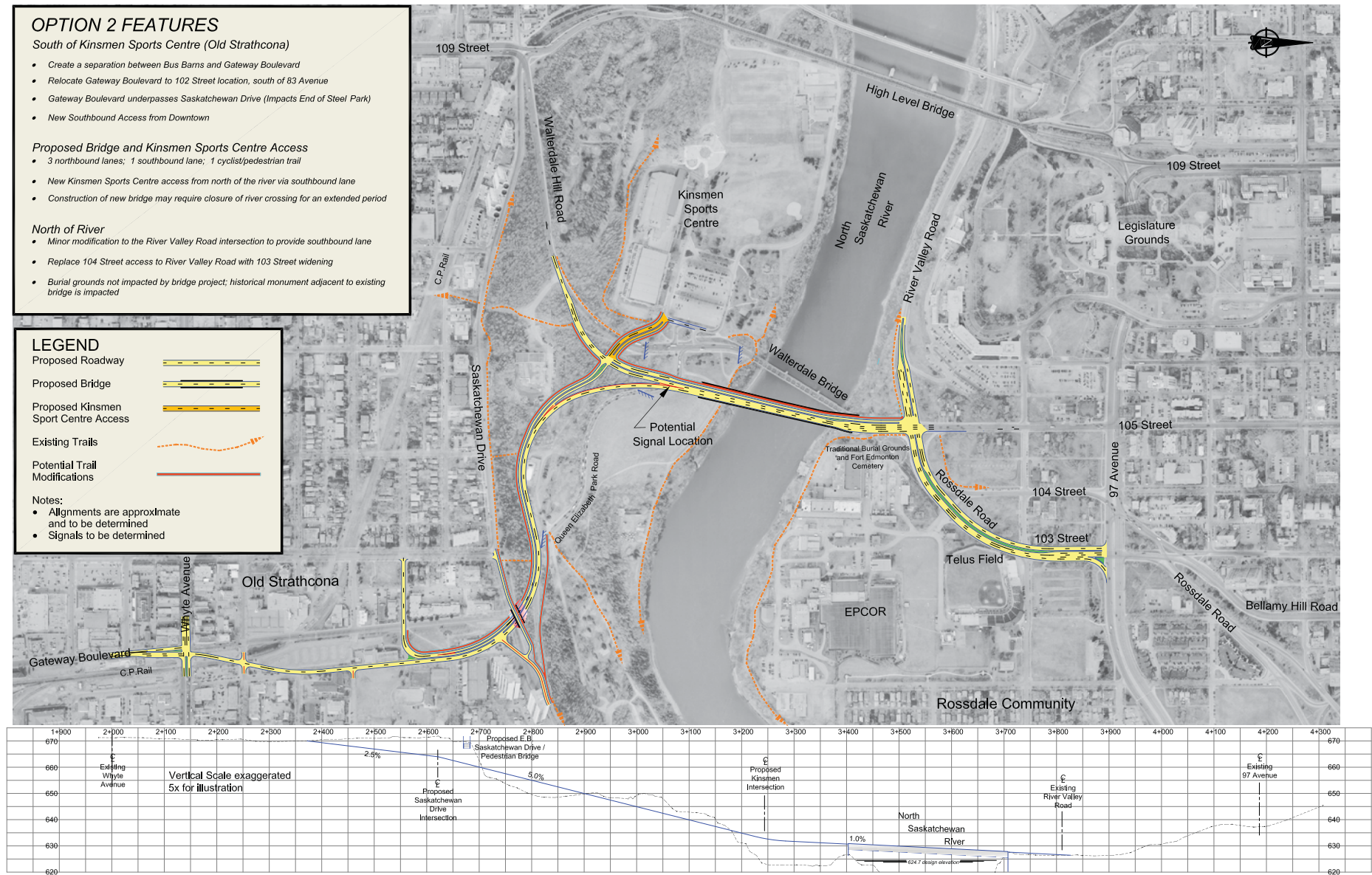


Potential Trail Modifications



### Notes:

- Alignments are approximate and to be determined
- Signals to be determined



# OPTION 2

THE CITY OF  
**Edmonton**  
TRANSPORTATION



## OPTION 3 FEATURES

### South of Kinsmen Sports Centre (Old Strathcona)

- Realign Gateway Boulevard to 102 Street location, south of Saskatchewan Drive (Impacts End of Steel Park)
- New Saskatchewan Drive intersection eliminates 'hairpin' curve access to river valley

### Proposed Bridge and Kinsmen Sports Centre Access

- 3 northbound lanes; 1 southbound lane; 1 cyclist/pedestrian trail
- New Kinsmen Sports Centre access from north of the river via southbound lane
- Construction of new bridge may not require closure of river crossing for an extended period

### North of River

- Reconfigure River Valley Road intersection to provide southbound lane and northbound lane.
- No River Valley Road access from new bridge
- Replace 104 Street access to River Valley Road with 103 Street widening
- New bridge overpasses burial grounds and historical monument

## LEGEND

Proposed Roadway



Proposed Bridge



Proposed Kinsmen Sports Centre Access



Existing Trails

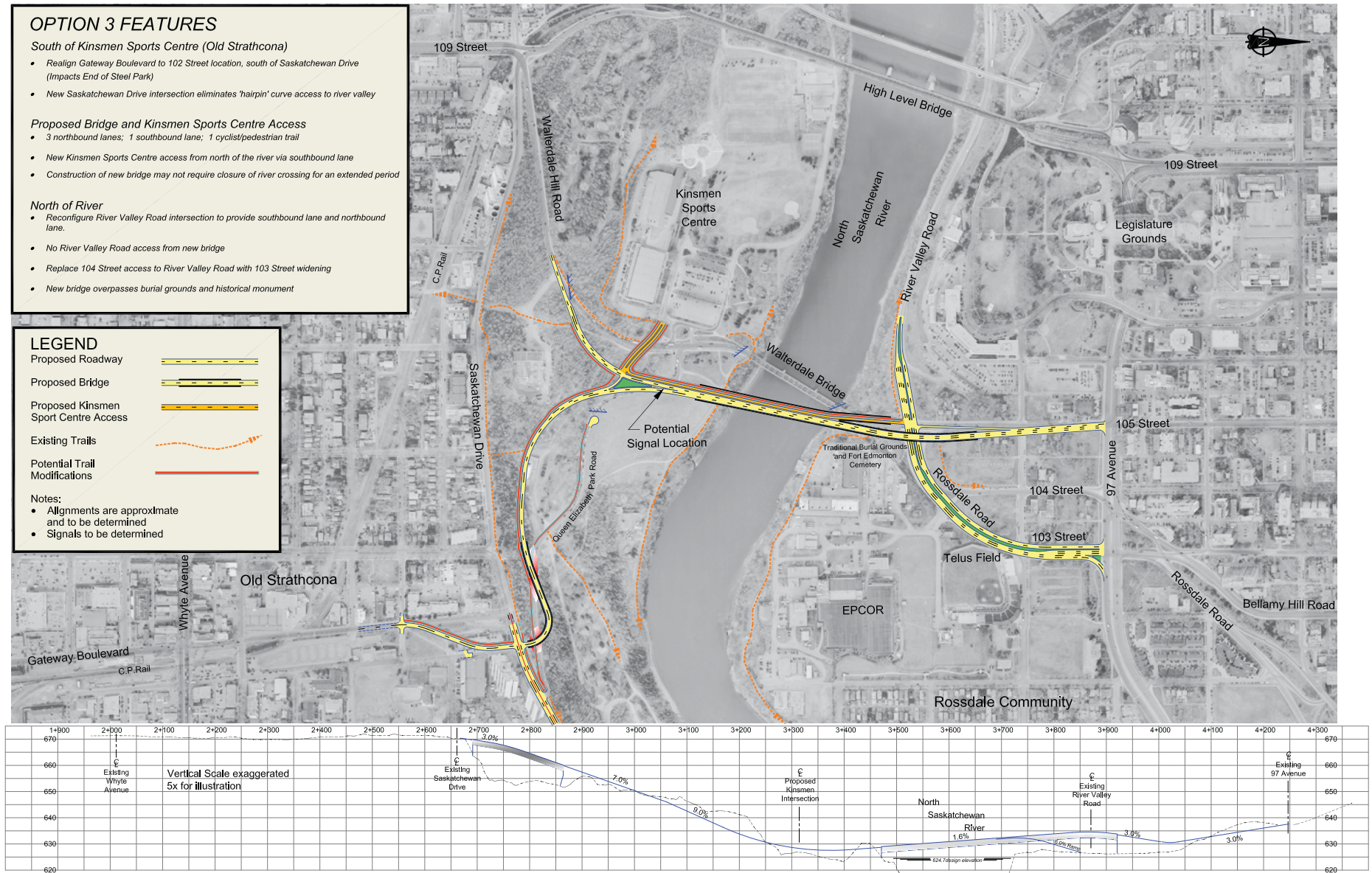


Potential Trail Modifications



### Notes:

- Alignments are approximate and to be determined
- Signals to be determined



# OPTION 3



## OPTION 4 FEATURES

### South of Kinsmen Sports Centre (Old Strathcona)

- Moves Gateway Boulevard close to the Yardbird Suite building
- Gateway Boulevard underpasses Saskatchewan Drive (Impacts End of Steel Park)

### Proposed Bridge and Kinsmen Sports Centre Access

- 3 northbound lanes; 1 southbound lane; 1 cyclist/pedestrian trail
- New bridge location approximately 250m downstream from existing bridge
- A new Kinsmen Sports Centre access from north of the river via the new southbound lane
- Construction of new bridge has no direct impact on the existing river crossing

### North of River

- 105 Street/ River Valley Road intersection is modified to eliminate lanes from the existing bridge
- Replace 104 Street access to River Valley Road with 103 Street widening and extend River Valley Road to 103 Street
- Burial grounds and historical monument not directly impacted by bridge project

## LEGEND

Proposed Roadway



Proposed Bridge



Proposed Kinsmen Sport Centre Access



Existing Trails

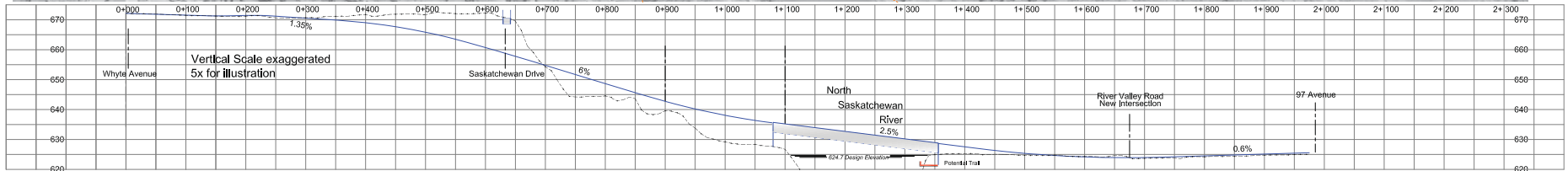
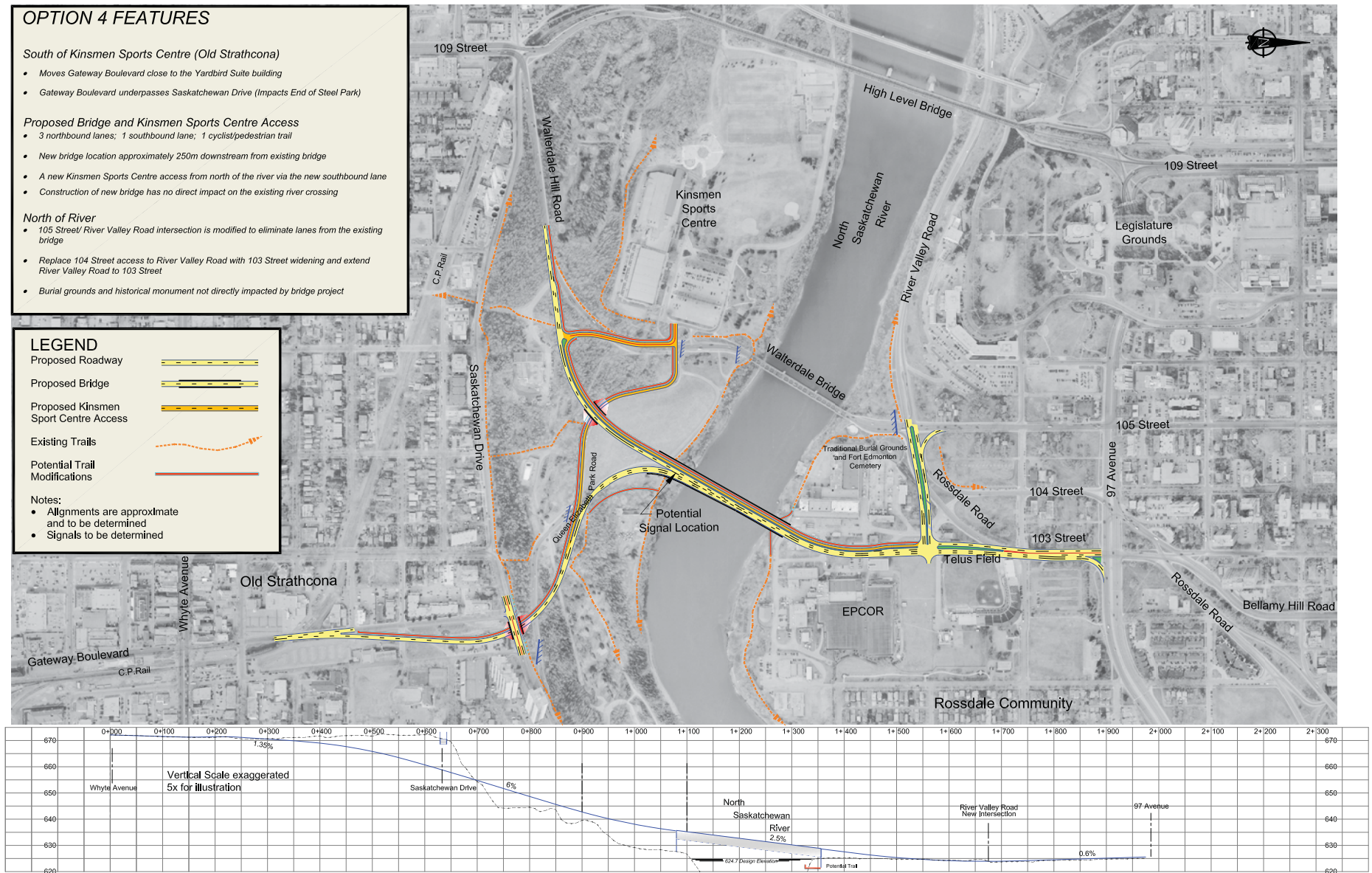


Potential Trail Modifications



### Notes:

- Alignments are approximate and to be determined
- Signals to be determined



# OPTION 4