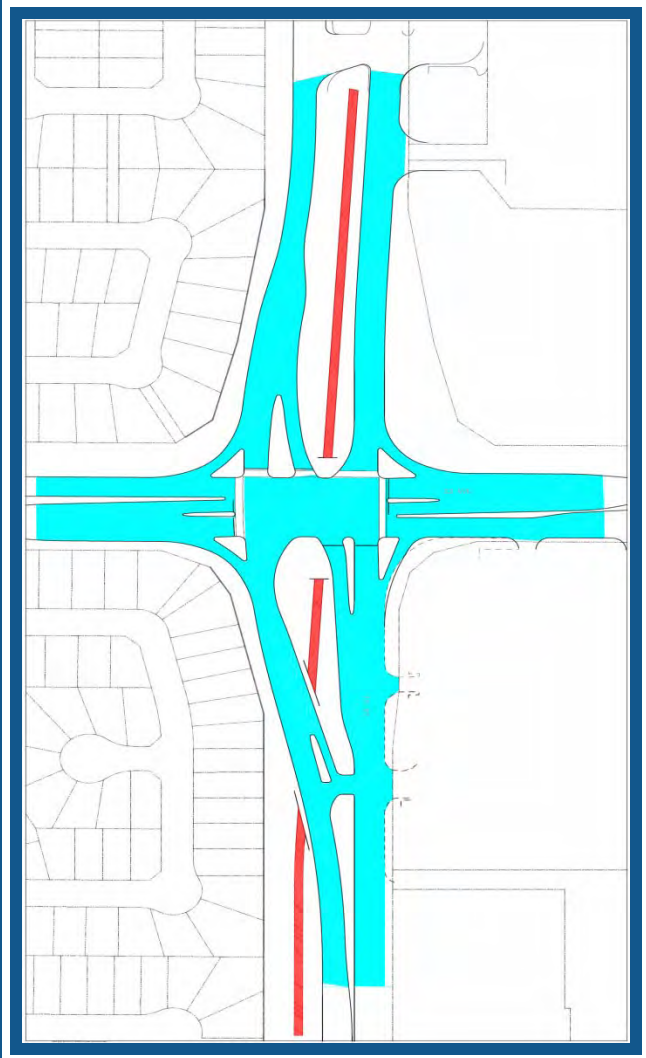
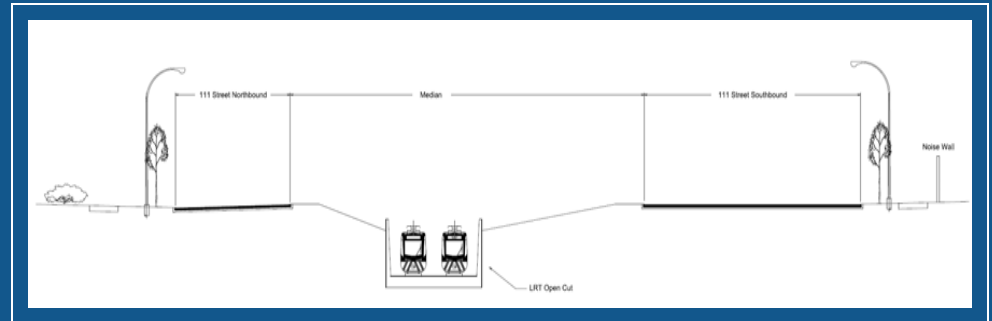


## 23 AVENUE GRADE SEPARATION



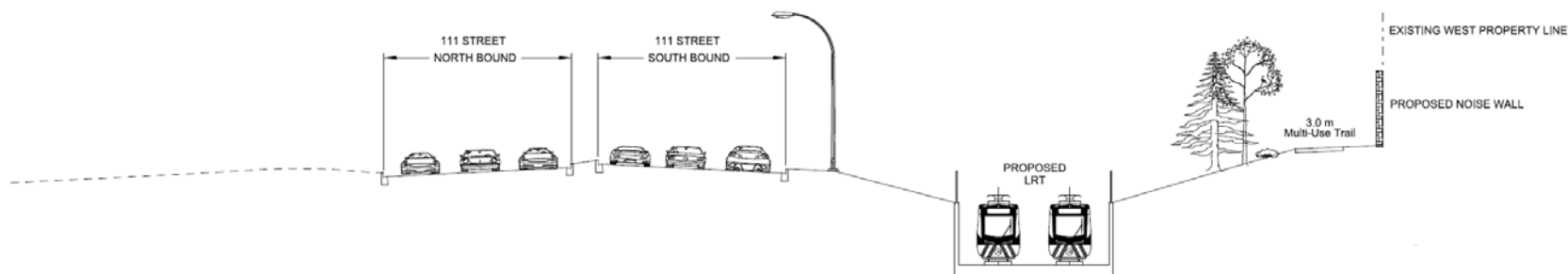
- LRT IN MEDIAN UNDER 23 AVENUE
- LIMITED RIGHT OF WAY
- SPLIT NORTHBOUND AND SOUTHBOUND LANES



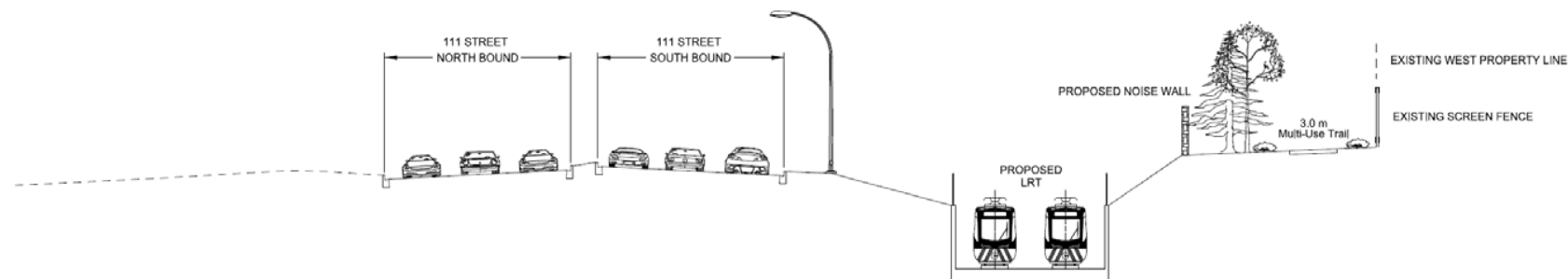
- PROFILE OF LRT UNDER 23 AVENUE
- GEOTECHNICAL CONCERNS
- STORMWATER MANAGEMENT
- IMPACTS ON EXISTING BERM

# IMPACTS ON EXISTING BERM

## OPTION 1 – NOISE WALL ON PROPERTY LINE

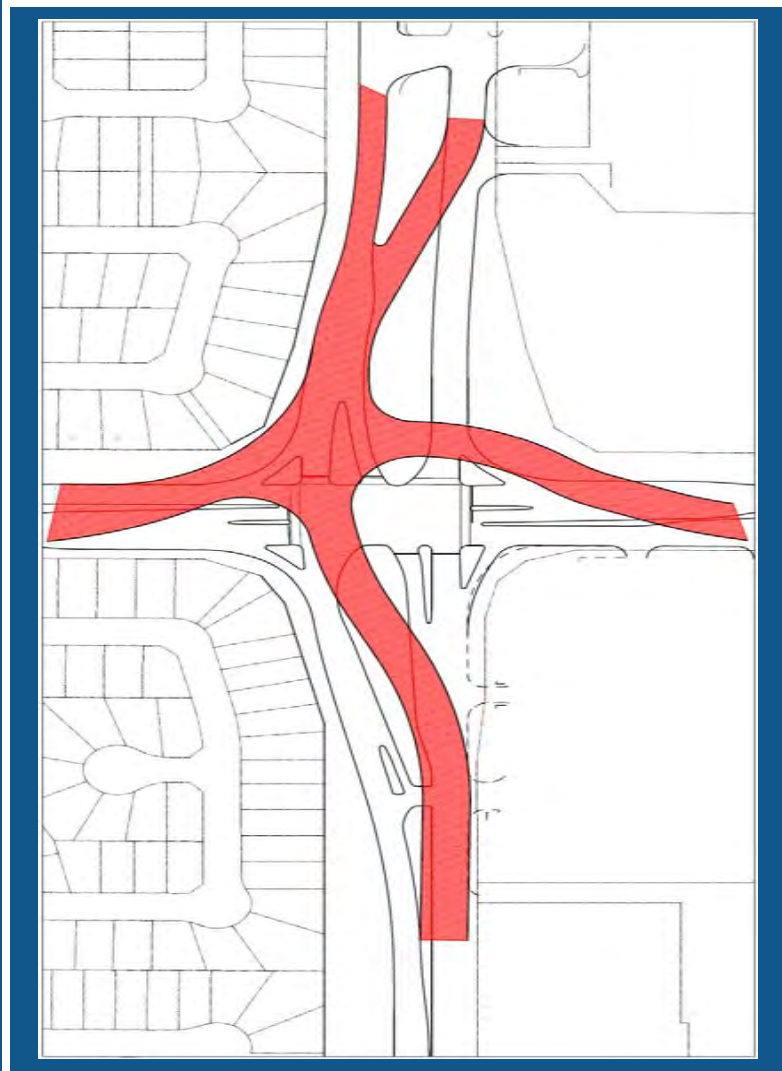


## OPTION 2 – NOISE WALL ADJACENT TO LRT



# 23 AVENUE GRADE SEPARATION

## CONSTRUCTION STAGING

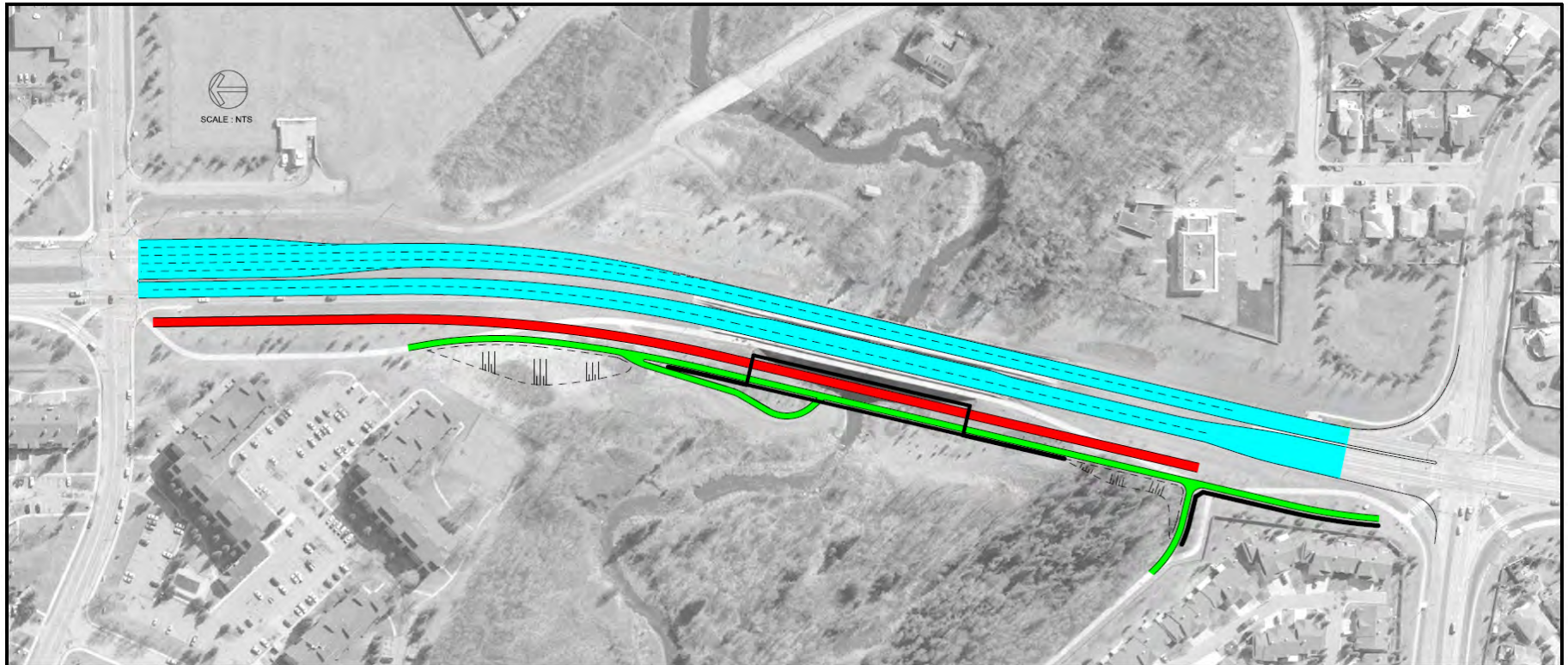


- **111 STREET**
  - 111 Street will be realigned to the west for construction staging
- **23 AVENUE**
  - 23 Avenue will be realigned to the north for construction staging

# BLACKMUD CREEK

## OPTION 1

### MULTI-USE TRAIL ON LRT BRIDGE

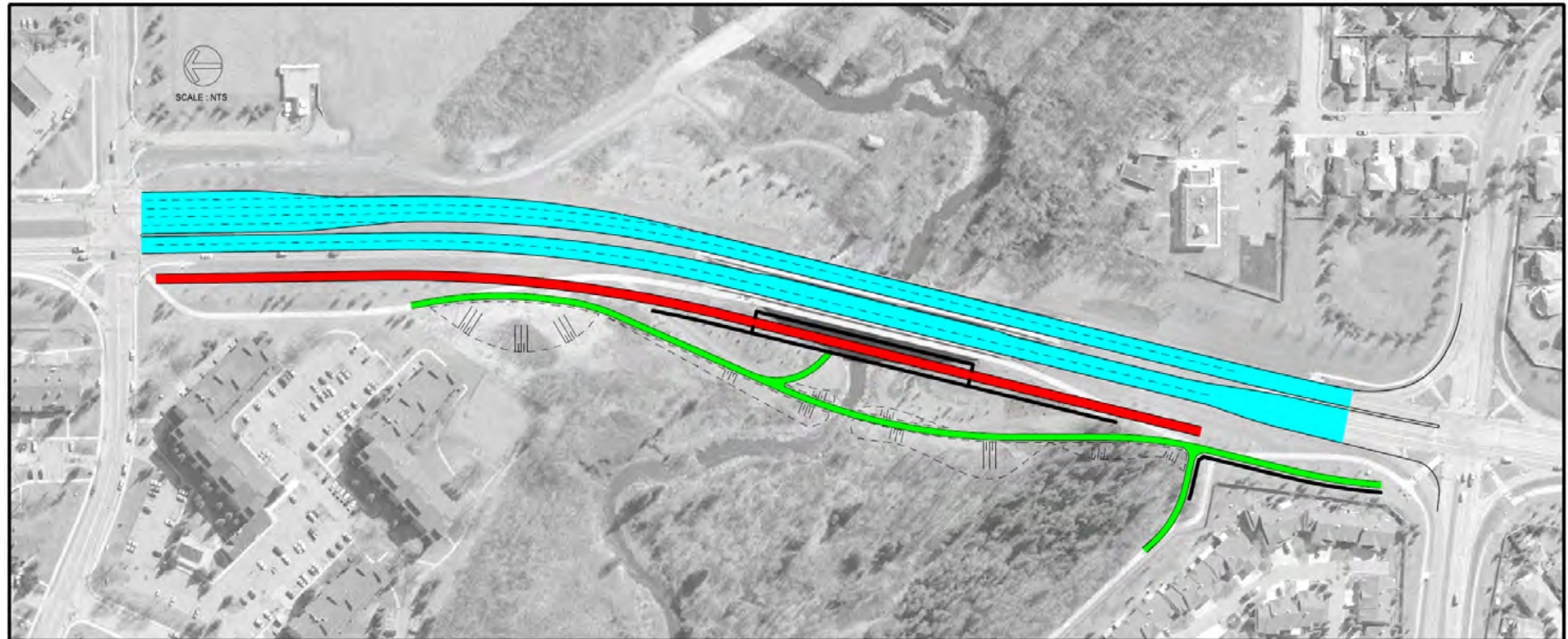




# BLACKMUD CREEK

## OPTION 2

### MULTI-USE TRAIL ON SEPARATE BRIDGE



## 3 – SPAN BRIDGE





# STEEL ARCH BRIDGE



# SEPARATE MULTI-USE TRAIL BRIDGE





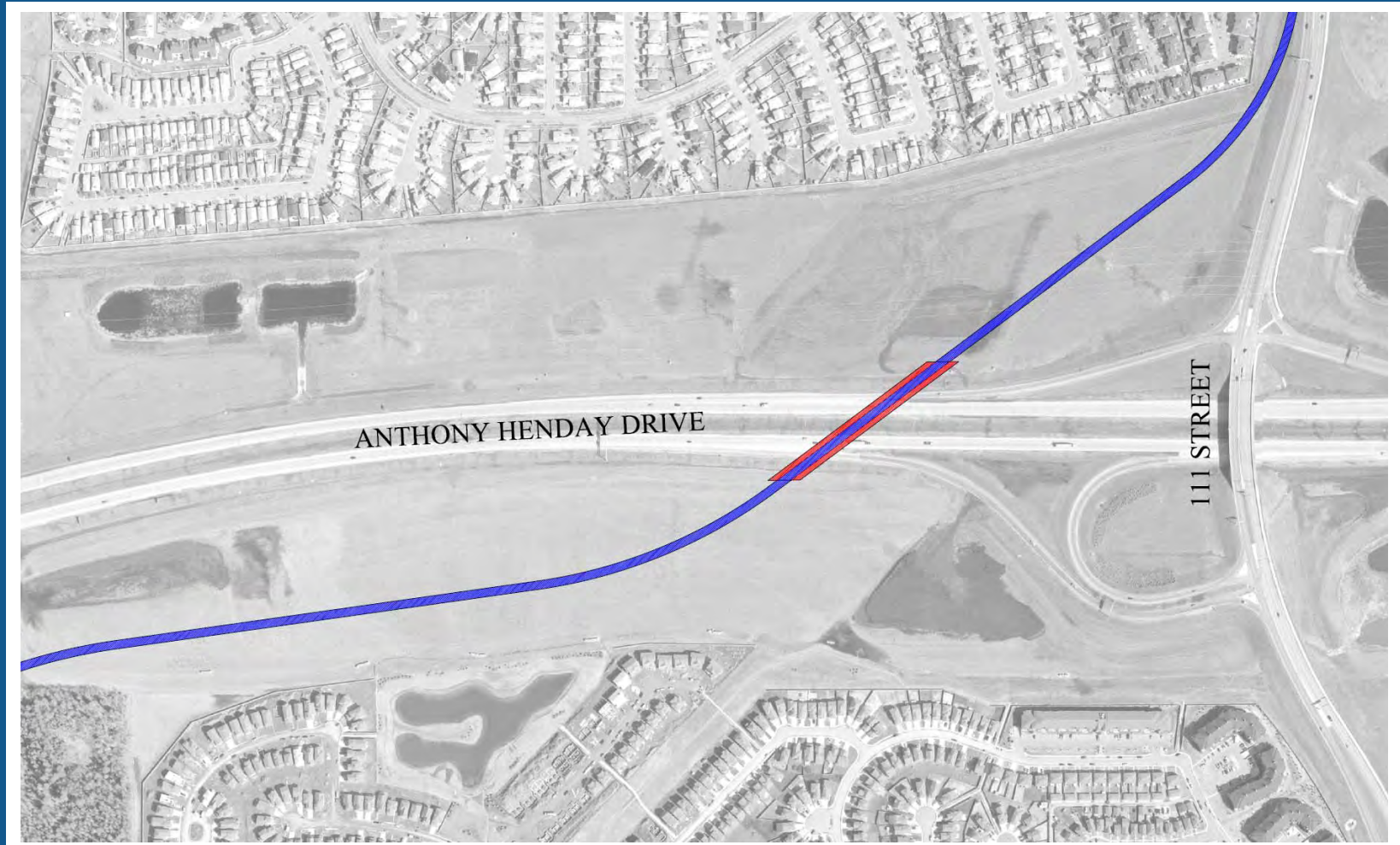
# TWIN BROOKS

## (12 AVENUE – 9 AVENUE)



# 9 AVENUE – SOUTH ANTHONY HENDAY DRIVE

## OPTION 1





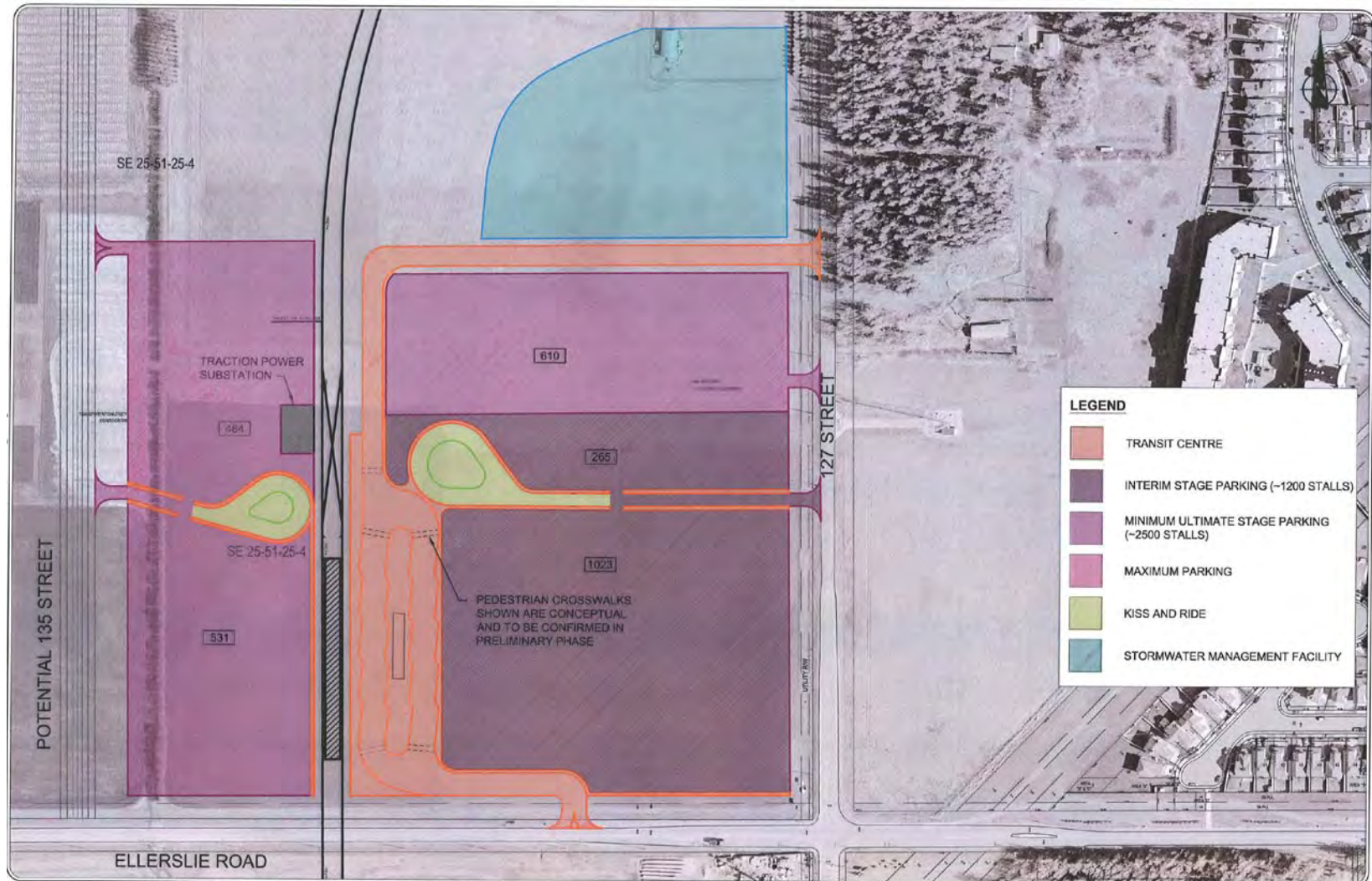
# 9 AVENUE – SOUTH ANTHONY HENDAY DRIVE

## OPTION 2





# PARK AND RIDE AND STATION



# SCHEDULE

- **FALL 2009**
  - **PUBLIC OPEN HOUSE - OCTOBER 8 (4-8pm), ELLERSLIE RUGBY CLUB.**
  - **CONTINUE ENGINEERING DESIGN.**
  - **SECOND SIP MEETING (DATE TO BE DETERMINED)**
  
- **EARLY 2010**
  - **PUBLIC INFORMATION SESSION (DATE AND LOCATION TO BE DETERMINED) .**
  - **FINALIZE ENGINEERING REPORT.**