

## Walk Edmonton

Walk Edmonton is an initiative bringing Edmontonians together to build a more walkable community by providing grass roots resources and building civic support. Check out our website for links to other walking resources, maps, walking groups and places to walk in Edmonton.

edmonton.ca/walkedmonton  
780-944-5339

## Other Walking Resources

**Alberta Centre for Active Living**  
centre4activeliving.ca  
780-427-6949

**Canada Walks**  
canadawalks.ca

**UWALK**  
UWALK.ca

## Shape (Safe Healthy Active People Everywhere)

shapeab.com

Get involved with Walk to School Week and Walking School Bus Programs

edmonton@shapeab.com  
780-406-8530



## The Benefits of Walking

### Walking... a healthy journey!

Ranked the number one activity of choice among Canadians, walking is a prescription for improved health and wellness. Walk briskly for 30 minutes a day, 5 days a week, and minimize your risk for cardiovascular disease, stroke, Type 2 diabetes and some types of cancer. Additional benefits include weight management, blood pressure control and boosting good cholesterol (HDLs).

Other benefits of walking:

- Releases the body's tension and stress.
- Refreshes the mind and body, especially when walking outdoors.
- Allows you to connect with your community.
- Offers an excellent way to socialize with family and/or friends.
- Increases "eyes on the street", enhancing community safety.

## Walking with your Dog

Edmonton has over 40 locations where you can enjoy your walk while your dog is off-leash. Please remember that all sites where dogs are permitted to be off-leash are multi-use areas used by all. Your dog must be leashed when not in a designated off-leash area. The dog icons shown on this map are placed in the approximate location of each off-leash area, but do not show the precise boundaries. For more information, including details on off-leash boundaries, check the Parks for Paws Brochure or go to edmonton.ca (keyword off-leash)

**There are 1,440 minutes in a day,  
schedule 30 of them for walking!**

## Local Contacts

**Royal Gardens Community League**  
4030 – 117 Street NW  
Edmonton, Alberta  
780-434-4359  
royalgardenscommunity.com

**Aspen Gardens Community League**  
12015 – 39A Avenue NW  
Edmonton, AB T6J 6P7  
780-434-2687  
aspengardens.ca

**Greenfield Community League**  
3803 – 114 Street NW  
Edmonton, AB T6J 1M3  
780-435-7833  
greenfieldcommunityleague.com

**EPS Fairway Community Police Station**  
23 Fairway Drive  
119 Street & 38 Avenue  
780-496-8550

**Edmonton Public Library — Whitemud Crossing Branch**  
145 Whitemud Crossing Shopping Centre  
4211 – 106 Street  
780-496-1822

**Weather**  
780-468-4940

**City Information**  
Call 311

## Emergency Contacts

**Police/Ambulance/Fire**  
911

**Police Complaint Line**  
780-423-4567

## About the Community Walking Maps

This Community Walking Map is part of a series of walking guides. Each map is created as a joint project of Walk Edmonton and local Community groups to promote walkable communities. Contact us to find out if your community has an edition of this map series or to find out more about creating a map.

Walkedmonton@edmonton.ca  
780-944-5339



Printed 2015



## Aspen Gardens, Greenfield, Royal Gardens, Westbrook Estates

Royal Gardens is a diverse and energetic community. The Community League is key in connecting its residents through their annual Winter Carnival and many other exciting programs and events. Royal Gardens is home to four schools and the Confederation Leisure Centre — making it a great place to live!

Aspen Gardens is a quiet, mature neighbourhood — its residents are committed to an active lifestyle, from gardening in their yards to walking the trails and participating in the League's activities. This dynamic, thriving community sits peacefully on the top of Whitemud Ravine, so it's a natural link into the City's river valley trails.

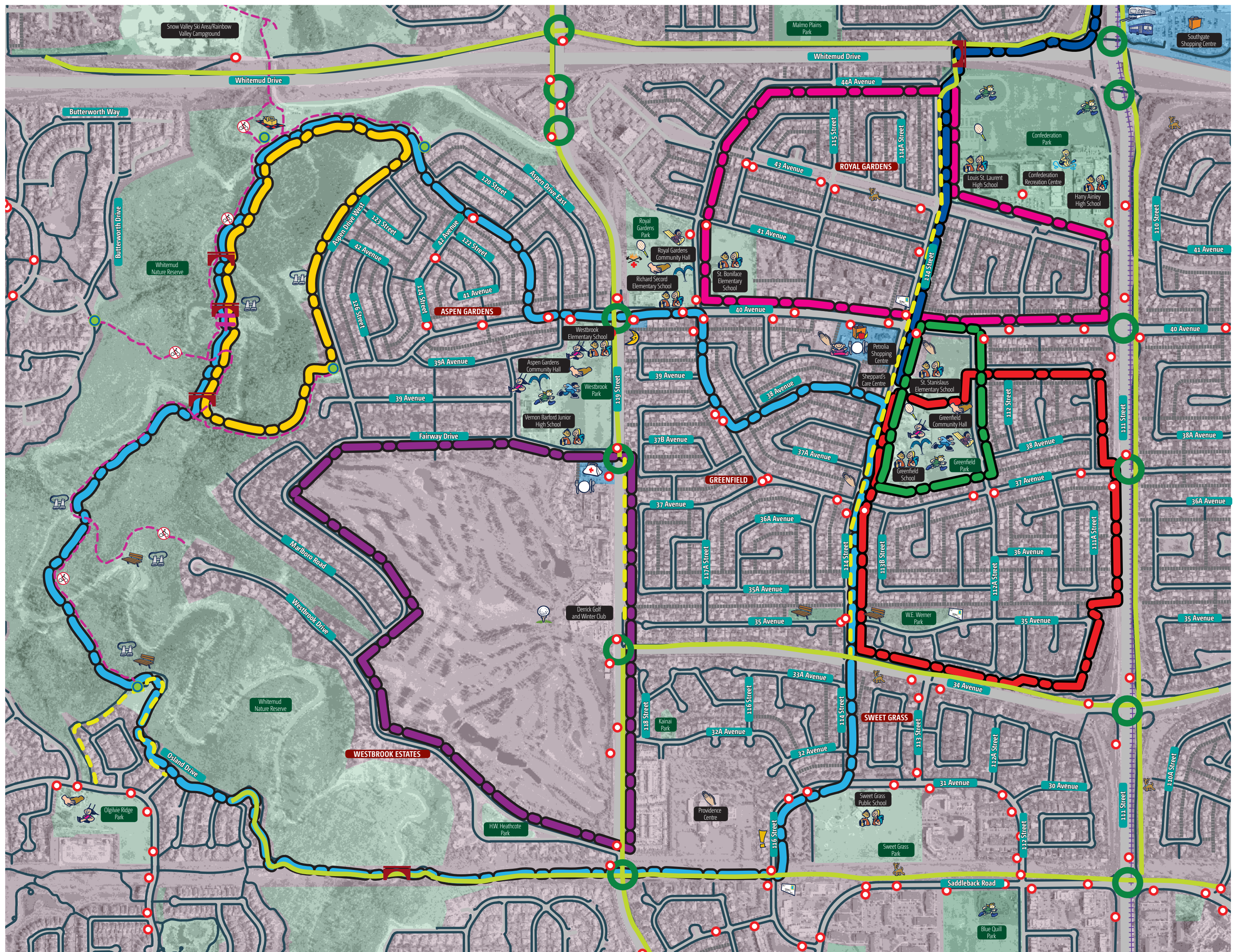
This map features three unique communities that are vibrant and community minded. They demonstrated their collaborative spirit in the creation of this map.

All three communities were developed in the late 1960's. Predominantly these neighbourhoods are single detached homes that are now being renovated and updated while maintaining their distinctive characteristics.

Greenfield was named in honour of Herbert Greenfield, the leader of the United Farmers Party and Premier of Alberta from 1921 – 1925. Greenfield is a vibrant, active community and we are proud of our tradition of volunteerism and community involvement. The two schools and Community League sites are centrally located, and provide year round recreational opportunities — including an incredible spray park that entertains Greenfield and surrounding South West residents with a cool place to hang out on our glorious summer days!

**Edmonton**





Commercial

Parkland

Residential Area

Bridge

Crosswalk with Signal

Bus Stop

Entrance to Nature Trails

No Cycling

On Street Bike Route

Paved Shared Use Pathway

Gravel Pathway

Roadway

Alleys

Sidewalk

LRT Track

Stairs

Sample walking routes

- 1.5 km Once Around the Park
- 1.7 km Greenfield C.L. to Southgate Mall LRT (one way)
- 3 km Aspen Loop
- 3.3 km Greenfield Park — East Loop
- 3.7 km Royal Gardens
- 4.3 km Fairway Loop
- 8 km Greenfield to Whitemud

**Scale**

0.00 0.15 0.30 0.45 0.60 0.75

Kilometres

0.75 Kilometres = About 10 minutes walking  
About 1,000 steps walking  
About 3 minutes cycling

**ASPEN GARDENS, GREENFIELD, ROYAL GARDENS, WESTBROOK ESTATES Legend**

Childcare Centre

Community Hall

ETS Bus Transit Centre

Fire-Ambulance

Golf Course

Grocery Store

Health Centre/ Medical

Late Night Store

LRT Station

Off-Leash Area

Picnic Site

Place of Worship

Playground

Point of Interest

Post Box/Post Office

Rest Spot

Restaurant

Scenic Viewpoint

School

Shopping Area

Skating Rink

Sports Fields

Spray Deck

Swimming Pool

Tennis Court

Toboggan Hill