



***Welcome!***

***Rio Terrace Neighbourhood  
Renewal***

***Open House***



# *Overview of the Neighbourhood Renewal Program*

*Presented By: Annie Duong, P.Eng.*

# *Current Neighbourhood Roadway Infrastructure*

- *Neighbourhoods in Edmonton:*
  - *300 (Incl. Industrial)*
- *Surface Infrastructure Life Expectancy:*
  - *Approx. 40-50 Years*
- *Neighbourhoods Requiring Renewal:*
  - *150*
- *For a Sustainable Renewal Plan:*
  - *13 – 15 Neighbourhoods/Year*



(Photo Courtesy of Edmonton Tourism)

# Types of Neighbourhood Renewal

- *Rehabilitation:*
  - *Resurfacing of the Pavement*
  - *Selective Repairs to Curbs and Sidewalks*



# *Types of Neighbourhood Renewal*

## ➤ *Reconstruction:*

- *Reconstruction of the Pavement*
- *Extensive Replacement of Curbs and Sidewalks*
- *Upgrading of Standard Street Lighting*



# *Current Funding Sources for the Neighbourhood Renewal Program*

- *Alberta Municipal Infrastructure Program (AMIP)*
- *Municipal Sustainability Initiative (MSI)*
- *City of Edmonton General Financing*
- *Local Improvement Tax Levy*



(Photo Courtesy of Wikipedia)



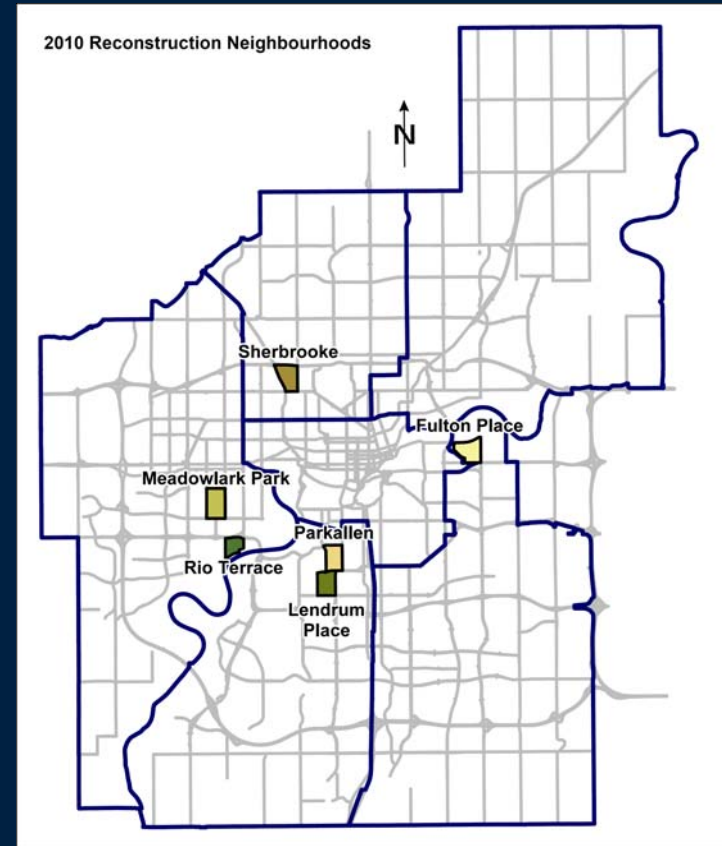
# *Neighbourhood Renewal Funding Breakdown*

<b>Infrastructure</b>	<b>Source</b>
Roads, Curbs, and Gutters	100% City
Underground Utility Work (EPCOR, Water, Drainage)	100% Utility
Standard Street Lights	100% City
Decorative Street Lights	100 % Property Owner on incremental costs above Standard Street Lights
Sidewalk Reconstruction	50% Property Owner/50% City

# Neighbourhood Renewal Program Scope for 2010

## ➤ *Reconstruction*

- *Rio Terrace*
- *Fulton Place*
- *Parkallen*
- *Sherbrooke*
- *Lendrum Place (Completion)*
- *Meadowlark Park (Completion)*





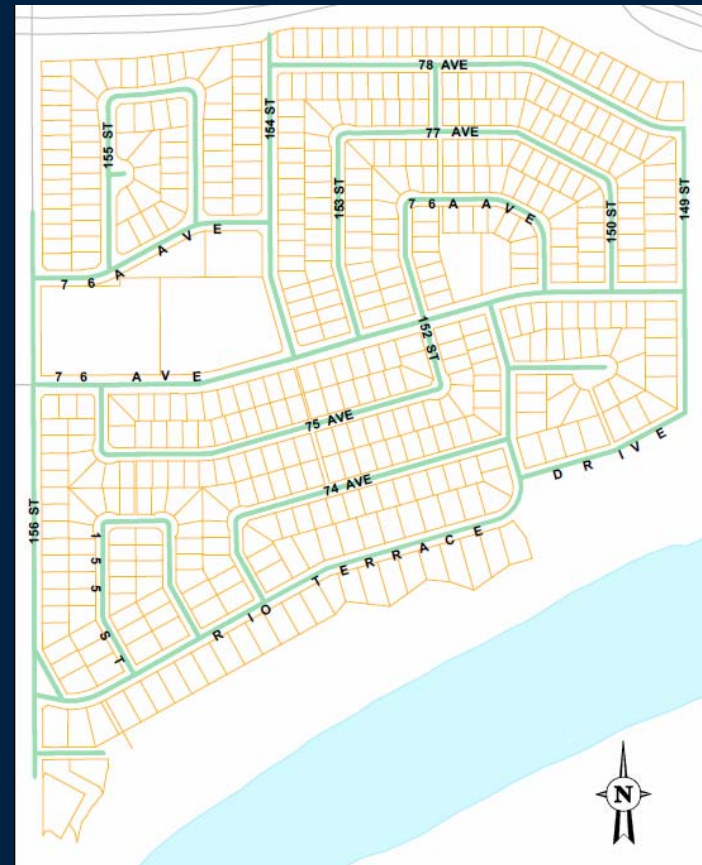


# *Neighbourhood Renewal Selection Criteria*

- *Average Condition of Pavement and Concrete*
- *Average Condition of Underground Infrastructure*
- *Coordination with Other Capital Projects*
  - *City (Internal)*
  - *External Agencies*
- *Available Funding*

# Rio Terrace Neighbourhood Current Level of Service

- *Age*
  - *+40 Years Old (est. 1964)*
- *Pavement*
  - *Fair to poor Condition*
- *Curbs*
  - *Poor to fair Condition*
- *Sidewalks*
  - *Poor Condition*



# Rio Terrace Neighbourhood Selection Criteria

- *Drainage Services Construction (Completed)*
  - *Sewer Rehabilitation*
  - *Flood Prevention*



(Photos Taken July 11, 2004)



# *Rio Terrace Construction Staging*

- Construction will be Staged Over 2 Years
  - 2010 & 2011
- Ultimate Staging is Dependent Upon:
  - Weather Conditions
  - Coordination of Work with Other Utilities
  - Design / Construction Issues





# *Rio Terrace Neighbourhood Renewal Cost Estimate*

- *Rio Terrace Surface Works Cost Estimate*
  - *\$14 Million (Incl. Standard Street Light Replacement)*



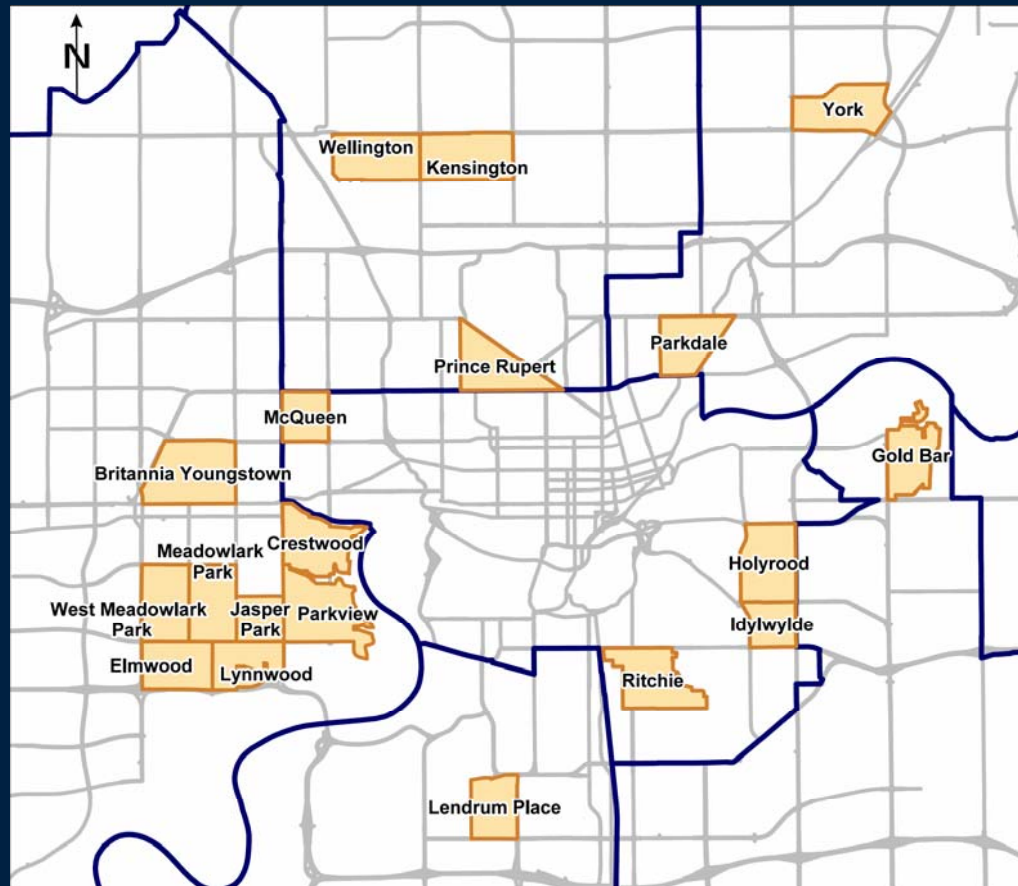
# *50/50 Cost Share Local Improvement for Sidewalks*

- 1995
  - Originated as a Pilot Project
- 1998
  - Approved by City Council



(Photo Courtesy of Dub Architects Ltd.)

# *Neighbourhoods with Sidewalk Replacement as a Local Improvement*





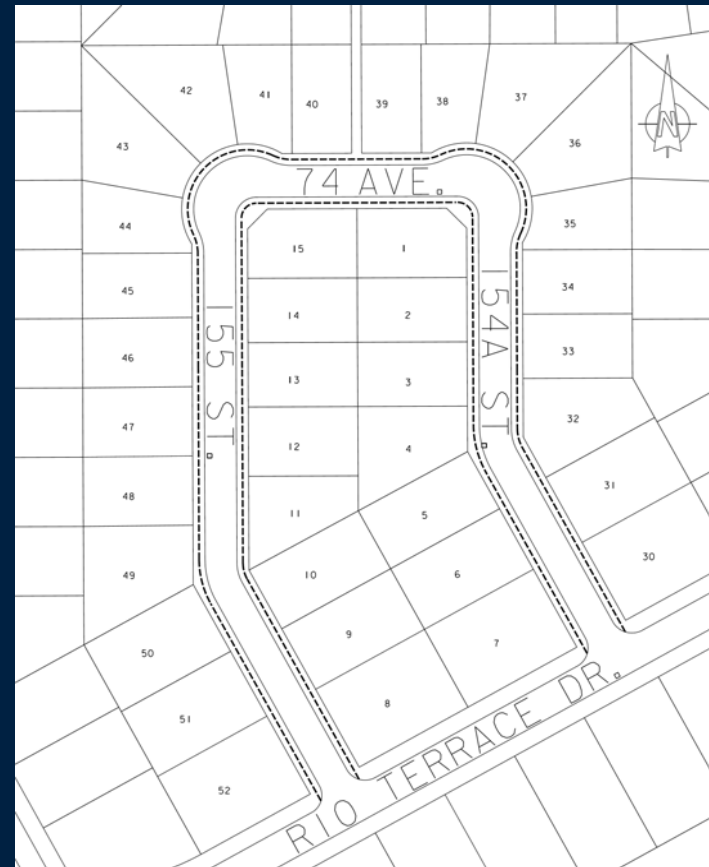
# *50/50 Cost Share Local Improvement for Sidewalks*

- Sidewalk Cost Estimates Include:
  - Concrete Removal and Excavation
  - Gravel Base
  - Reinforcing Steel
  - Concrete Placement
  - Private Walkway Connector Tie-Ins
  - Landscaping (Topsoil and Sod)



# *50/50 Cost Share Local Improvement for Sidewalks*

- 14 Distinct Projects in Rio Terrace
- Each Project May be Petitioned Against
  - Must have the Majority of Property Owners to Defeat the Local Improvement





# *What Happens if a Project is Successfully Defeated?*

- If a Project is Defeated the City Will Still, at No Cost to the Property Owners:
  - Reconstruct Roads
  - Spot Repair Curbs
  - Replace Street Lights
  - Repair Underground Utilities
  - Perform Maintenance Activities on Sidewalks
    - Asphalt Patching, Grinding, Mud Jacking

# *Condition Prior to Sidewalk Maintenance*





# *Sidewalk Maintenance – Asphalt Patching*



# *Sidewalk Maintenance – Grinding*





# *Sidewalk Maintenance – Mud Jacking*





## ***For More Information Contact:***

***Annie Duong, P.Eng.***

*Neighbourhoods, Roadways Design  
Roads Design & Construction Branch*

***Phone: 780-944-7680***

***E-mail: [annie.duong@edmonton.ca](mailto:annie.duong@edmonton.ca)***



# *Completed Renewal*

*(Without Support of Sidewalk Reconstruction)*



# *Completed Renewal*

*(With Support of Sidewalk Reconstruction)*

