

# Whitemud Drive and Quesnell Bridge Project

Construction Update

January 2011



## Project Overview

The widening of the Quesnell Bridge to enhance traffic flow and improve traffic safety will result in three lanes both east and westbound as well as auxiliary turning lanes and widened shoulders in both directions. A realignment of the existing multi-use trail north of the Quesnell Bridge, behind the arched retaining wall, is also being developed. The project will be completed during the summer of 2011.

Recently completed and upcoming construction:

- » Concrete deck, centre and west median pours complete on west side of Quesnell Bridge
- » Temporary asphalt placed on eastbound lanes
- » West side of Fox Drive Bridge is complete
- » Brander Garden noise wall is complete
- » Intersection improvement at Terwilligar Drive/40 Avenue is complete

Spring 2011 Work:

- » Remove temporary asphalt, waterproof and pave deck on west side of Quesnell Bridge
- » Form and pour east concrete median barrier
- » Final lift of asphalt paving from Terwilligar to the corner of 149 Street (including 53 Avenue ramps)
- » Install overhead signs

This is the first major rehabilitation of the Quesnell Bridge since it was constructed in 1967. The work being done will increase the lifespan of the bridge by up to 50 years. Reconstruction of the Fox Drive overpass will increase its lifespan by up to 75 years.

## Traffic Arrangement

The current traffic arrangement across the Quesnell Bridge will continue until spring of 2011:

- » 3 lanes eastbound
- » 4 lanes westbound

Speed limit across the bridge remains at 60 km/h as work will be ongoing through the winter.

Speed limits on either side of the bridge (Whitemud Drive east and west) are 80 km/h.

Before you begin your commute, check current traffic conditions online at [www.edmontontrafficcam.com](http://www.edmontontrafficcam.com)



## Pedestrian/Cyclist Shuttle

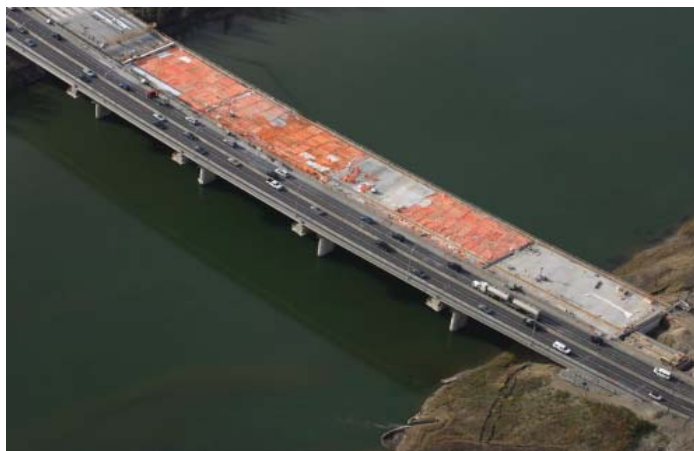
The City of Edmonton continues to provide a free shuttle service through the construction zone for the safety of pedestrian and cyclist traffic. The drop off/pick up points are on Fox Drive at the Fort Edmonton Park entrance and on Laurier Drive at 142 A Street.

The shuttle, which includes bike racks and wheelchair accessibility, runs every half hour between 7:00 a.m. and 7:00 p.m., seven days a week for the duration of the project (until July 2011). For more information about the shuttle service, visit: [www.edmonton.ca/quesnellbridge](http://www.edmonton.ca/quesnellbridge).



## Winter Conditions

With the cooler weather, construction on the Quesnell Bridge, Whitemud Drive and Fox Drive will be reduced. There may be periodic overnight lane closures as crews strive to complete work on the many aspects of the project. Please keep in mind that the reduced speeds and traffic shifts may result in slight delays.



## Construction Zone Safety Tips

For everyone's safety, including your own, remember these important construction zone safety tips:

- » Slow down and drive the posted speed limit
- » Pay close attention to all signs
- » Be prepared to stop in all construction zones

For a complete map of current City of Edmonton transportation construction projects, visit [www.edmonton.ca/transportation](http://www.edmonton.ca/transportation) and click on current road projects.

For more information, call 3-1-1 or email [roadconstruction@edmonton.ca](mailto:roadconstruction@edmonton.ca)