

Share your opinion on how traffic challenges in your community can be improved.

The City of Edmonton is engaging the public to design a solution to speeding, shortcutting, and other traffic challenges in your community.

PHASE 1: 2014 *Design it and see how it works.*

Stage 2: Options Development

Come up with options for managing traffic in your community.

Stage 1: Visioning

Look at current traffic challenges and envision what the community could become.

Stage 3: Plan Design

Choose and fine-tune the most desirable traffic management plan for your community.

Stage 4: Trial Vote

The community votes on whether the chosen traffic management plan should be put in place for a trial period.

PHASE 2: 2014 - 2015 *Refine it and see if it should stay.*

Stage 5: Trial Assessment

Following the trial period, see how successful the traffic management plan was in resolving traffic challenges.

Stage 6: Final Vote

The community votes on whether the traffic management plan should be in place permanently. Based on the vote, the plan goes to Council for funding.

The City is looking to residents and other stakeholders to help decide how to make community streets safer and less congested, so that your community is a desirable community to live, work and play in.

Themes We Heard

from the community and stakeholders

High Traffic Volumes and/or Shortcutting:

- 124 St, 127 St and 118 Ave
- Shortcutting on 124 St
- 127St is backed up southbound in the morning and northbound in the afternoon
- 118Ave is backed up at 124St in the afternoon
- 121St is under-used

Parking:

- Inadequate parking at 118Ave by 123St and 124St
- Parking restrictions on 123St are too strict
- Snow on streets limits parking and makes it difficult for school buses to turn

Crosswalks:

- Across 118Ave at 123St and 124St
- Not well-marked, poor visibility
- Many accidents

Speeding:

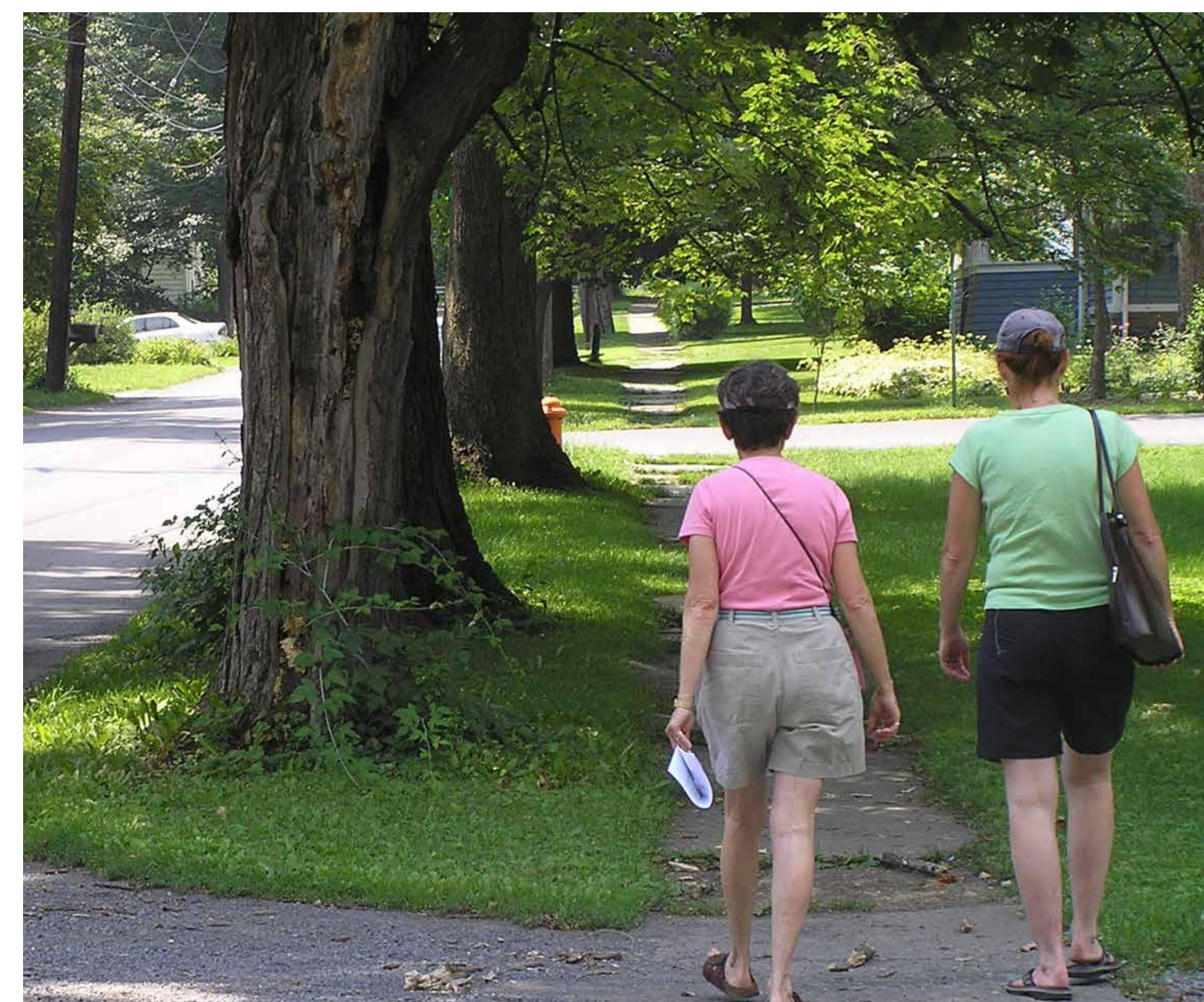
- Speeding on 124St during off-peak hours
- Particularly concerning by park

Driving Behaviour:

- Illegal second lane of traffic northbound on 124St by Yellowhead
- Cars running light at 124St and Yellowhead

Uncontrolled Intersection:

- Intersection at 125St and 123Ave is uncontrolled, concern that this leads to accidents
- Traffic congestion at 125St and 123Ave makes it difficult for school buses to turn



Values We Heard

from the community and stakeholders

Sense of Community:

- More green space
- Vibrant playgrounds
- A dog park
- A youth recreation skateboard park
- A community hall
- Recreation facilities

Active Modes of Transportation:

- Pedestrian-friendly, safe, walkable streets
- Bicycle trails, dedicated walking paths and running trails

Better Traffic Flow:

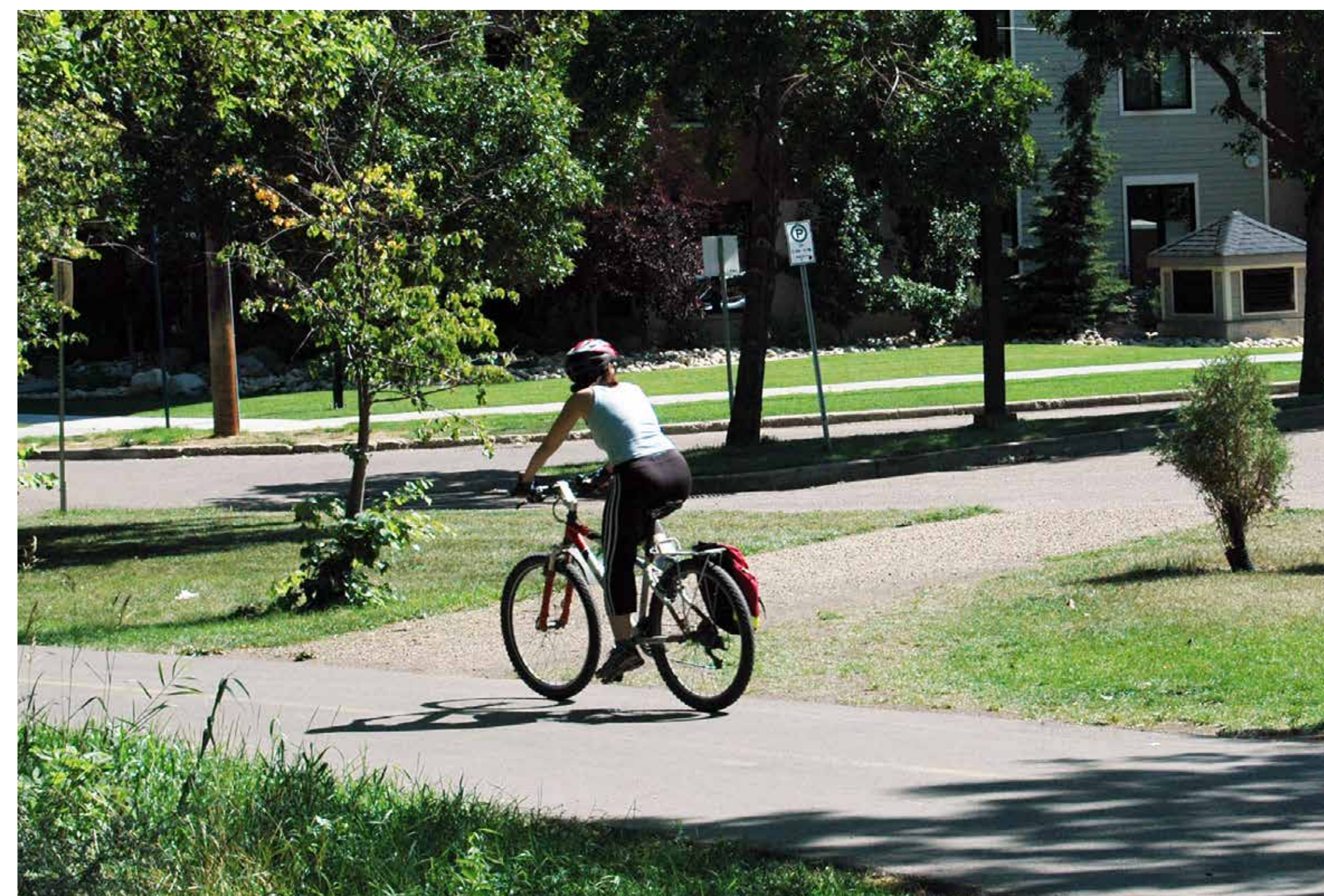
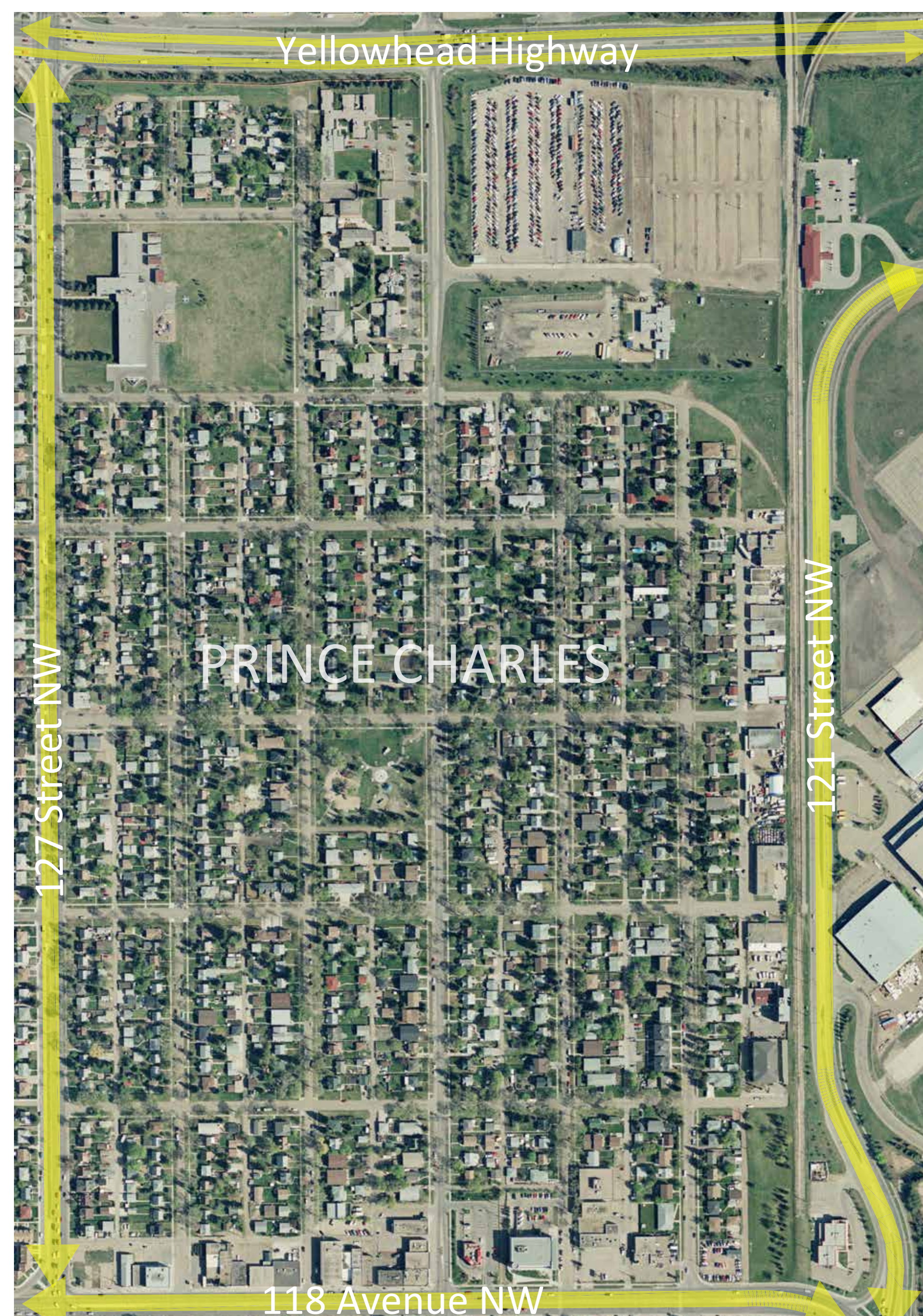
- No shortcutting of traffic through our neighborhood
- Reduced truck traffic on residential streets
- Less traffic on 124St
- Better bus service

Accessibility:

- Easier school bus exit
- Easy commute out of community
- Easy access to resources in other communities

Safety:

- Pedestrian safety
- Bike safety
- Vehicle safety



Themes from Prince Charles Stakeholder Interviews



