

# Share your opinion on how traffic challenges in your community can be improved.

*The City of Edmonton is engaging the public to design a solution to speeding, shortcutting, and other traffic challenges in your community.*

## PHASE 1: 2014 *Design it and see how it works.*

### **Stage 2: Options Development**

*Come up with options for managing traffic in your community.*

### **Stage 1: Visioning**

*Look at current traffic challenges and envision what the community could become.*

### **Stage 3: Plan Design**

*Choose and fine-tune the most desirable traffic management plan for your community.*

### **Stage 4: Trial Vote**

*The community votes on whether the chosen traffic management plan should be put in place for a trial period.*

## PHASE 2: 2014 - 2015 *Refine it and see if it should stay.*

### **Stage 5: Trial Assessment**

*Following the trial period, see how successful the traffic management plan was in resolving traffic challenges.*

### **Stage 6: Final Vote**

*The community votes on whether the traffic management plan should be in place permanently. Based on the vote, the plan goes to Council for funding.*

*The City is looking to residents and other stakeholders to help decide how to make community streets safer and less congested, so that your community is a desirable community to live, work and play in.*

# Themes We Heard

from the community and stakeholders

## High Traffic Volumes and/or Shortcutting:

- Shortcutting on 106St, 109St, 57Ave, 55Ave and 105St
- Overflow from arterial routes to collector routes to residential streets
- Shortcutting through private property and alleys

## Speeding:

- Speeding on 106St and 109St
- Particular concerns by school and day care

## Driving Behaviour:

- Illegal U-turns by school
- Driving the wrong way on 52Ave, 53Ave and 55 Ave

## Crosswalks:

- Across 106st at 60A Ave, 107St, 52Ave and 51Ave
- Not well-marked, poor visibility
- 51ave pedestrian light is too short

## Bike Lanes:

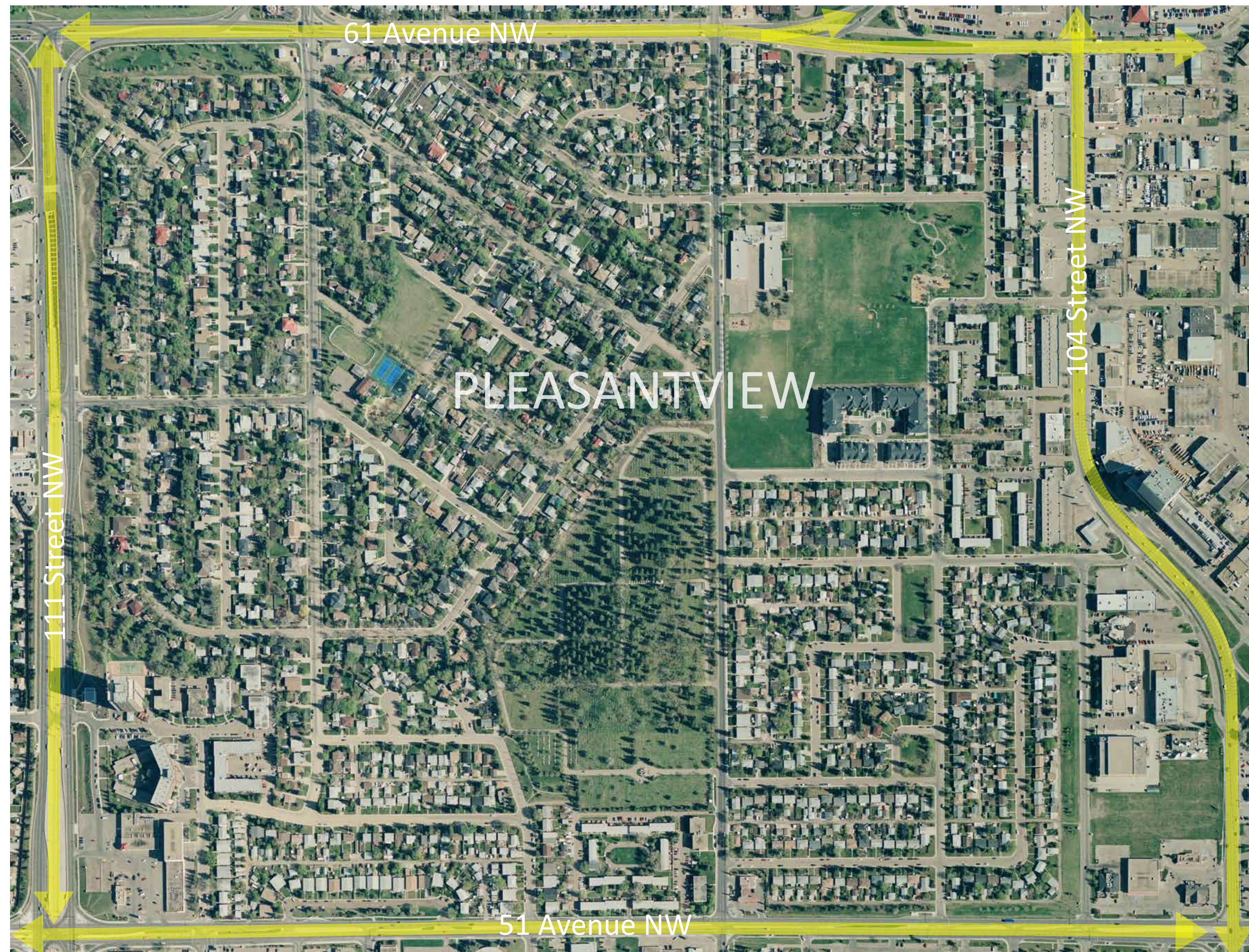
- Concerns about use
- Concerns about impacts in winter when snow reduces road width

## Parking:

- Inadequate parking along 106St
- Southgate and public transit clients park in neighbourhood

## Speed Humps:

- Some love them, others hate them



# Values We Heard

from the community and stakeholders

## Sense of Community:

- Urban oasis
- A destination, not a corridor
- Urban village

## Community

## Demographics:

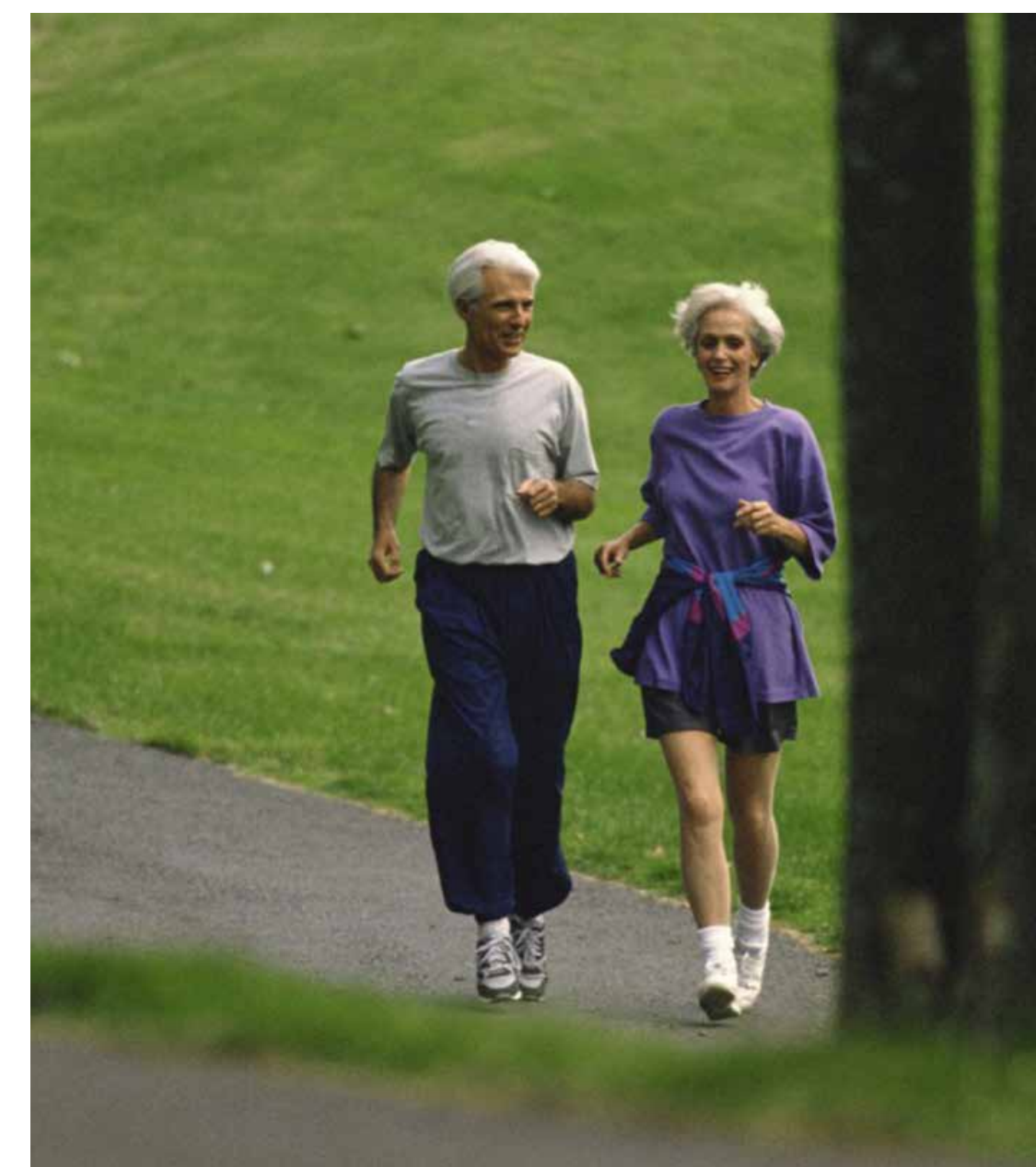
- Broad and varied
- Multi-generational

## Better Traffic Flow:

- Decrease traffic volumes
- Decrease amount of shortcutting
- Local traffic only

## Active Modes of Transportation

- Pedestrian-friendly
- Walkable neighbourhood
- Street crossings improved
- Effective bicycle infrastructure



## Public Transit:

- Convenient
- Non-disruptive

## Less Pollution:

- Less noise
- Better air quality

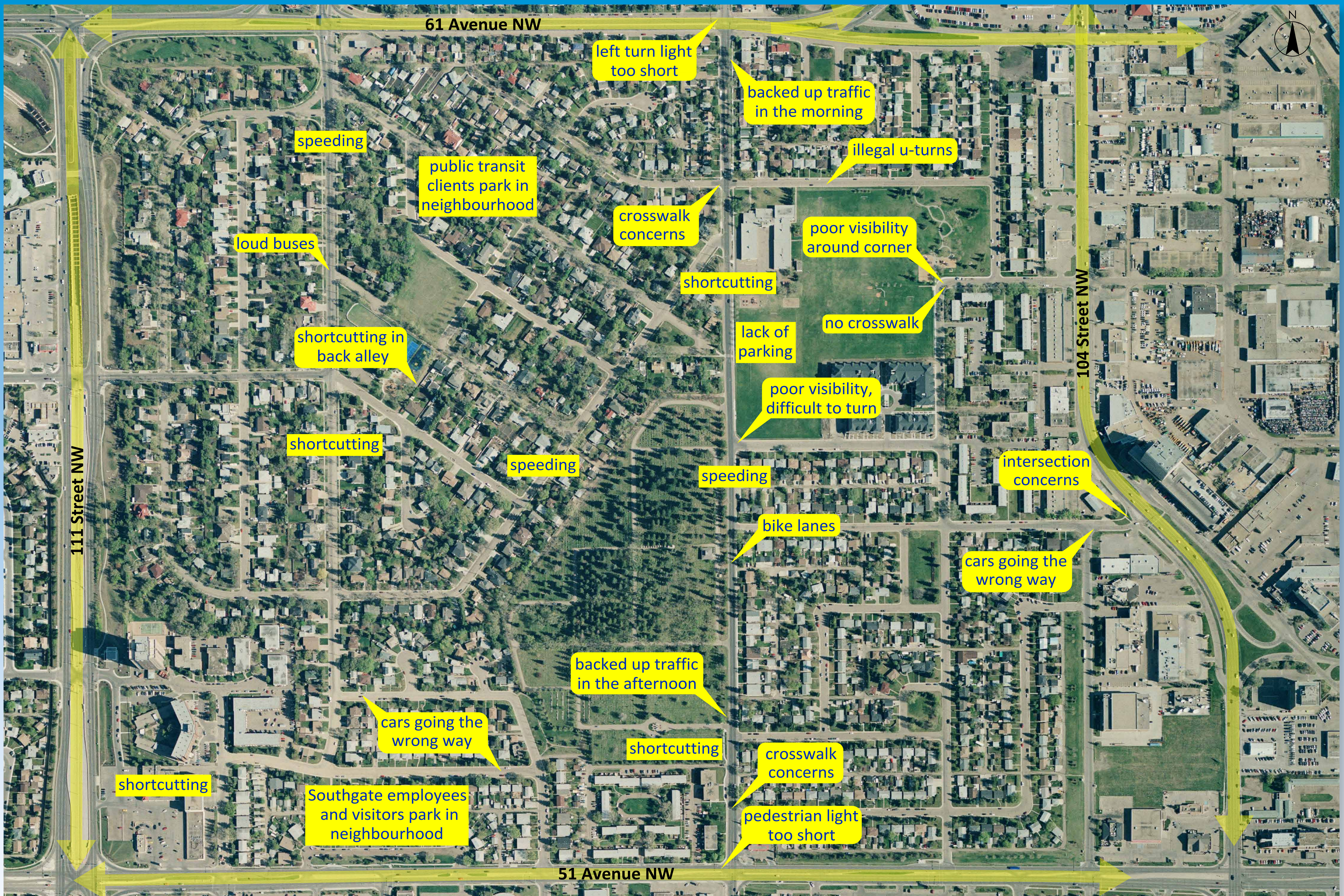
## Safety:

- Vehicle safety
- Pedestrian safety
- Bicycle safety



# Themes from Pleasantview Stakeholder Interviews





# Pleasantview Community Traffic Concerns