

Walk Edmonton

Walk Edmonton is an initiative bringing Edmontonians together to build a more walkable community by providing grass roots resources and building civic support. Check out our website for links to other walking resources, maps, walking groups and places to walk in Edmonton.

edmonton.ca/walkedmonton
780-944-5339

Other Walking Resources

Alberta Centre for Active Living
centre4activeliving.ca
780-427-6949

Canada Walks
canadawalks.ca

UWALK
UWALK.ca

The Benefits of Walking

Walking... a healthy journey!

Ranked the number one activity of choice among Canadians, walking is a prescription for improved health and wellness. Walk briskly for 30 minutes a day, 5 days a week, and minimize your risk for cardiovascular disease, stroke, Type 2 diabetes and some types of cancer. Additional benefits include weight management, blood pressure control and boosting good cholesterol (HDLs).

Other benefits of walking:

- Releases the body's tension and stress.
- Refreshes the mind and body, especially when walking outdoors.
- Allows you to connect with your community.
- Offers an excellent way to socialize with family and/or friends.
- Increases "eyes on the street", enhancing community safety.

Walking with your Dog

Edmonton has over 40 locations where you can enjoy your walk while your dog is off-leash. Please remember that all sites where dogs are permitted to be off-leash are multi-use areas used by all. Your dog must be leashed when not in a designated off-leash area. The dog icons show on this map are placed in the approximate location of each off-leash area, but do not show the precise boundaries. For more information, including details on off-leash boundaries, check the Parks for Paws Brochure or go to edmonton.ca (keyword off-leash)



**There are 1,440 minutes in a day,
schedule 30 of them for walking!**

Local Contacts

Calder Community League
12721 – 120 Street
Phone: 780-455-6666

Kensington Community League
12130 – 134A Avenue
Phone: 780-454-6885
Kensingtonhall@shaw.ca
KensingtonCommunityLeague.com

Lauderdale Community League
12937 – 107 Street
Phone: 780-475-8644
feedback@lauderdale.ca
lauderdale.ca

Rosslyn Community League
11015 – 134 Avenue
Phone: 780-475-4141
info@rosslyncommunity.org
rosslyncommunity.org

Northwest Edmonton Seniors Society
12963 – 120 Street
780-451-1925
execald@telus.net
calderseniors.org

Calder Branch — Edmonton Public Library
12522 – 132 Avenue
780-496-7090
EPL.ca

Grand Trunk Fitness & Centre
13025 – 112 Street
311
311@edmonton.ca

Edmonton Police Service Calder Community Station
12540 – 132 Avenue
780-496-8535

Weather
780-468-4940

City Information
Call 311

Emergency Contacts

Police/Ambulance/Fire
911

Police Complaint Line
780-423-4567

About the Community Walking Maps

This Community Walking Map is part of a series of walking guides. Each map is created as a joint project of Walk Edmonton and local Community groups to promote walkable communities. Contact us to find out if your community has an edition of this map series or to find out more about creating a map.

Walkedmonton@edmonton.ca
780-944-5339

Funding for this project provided
by Great Neighbourhoods

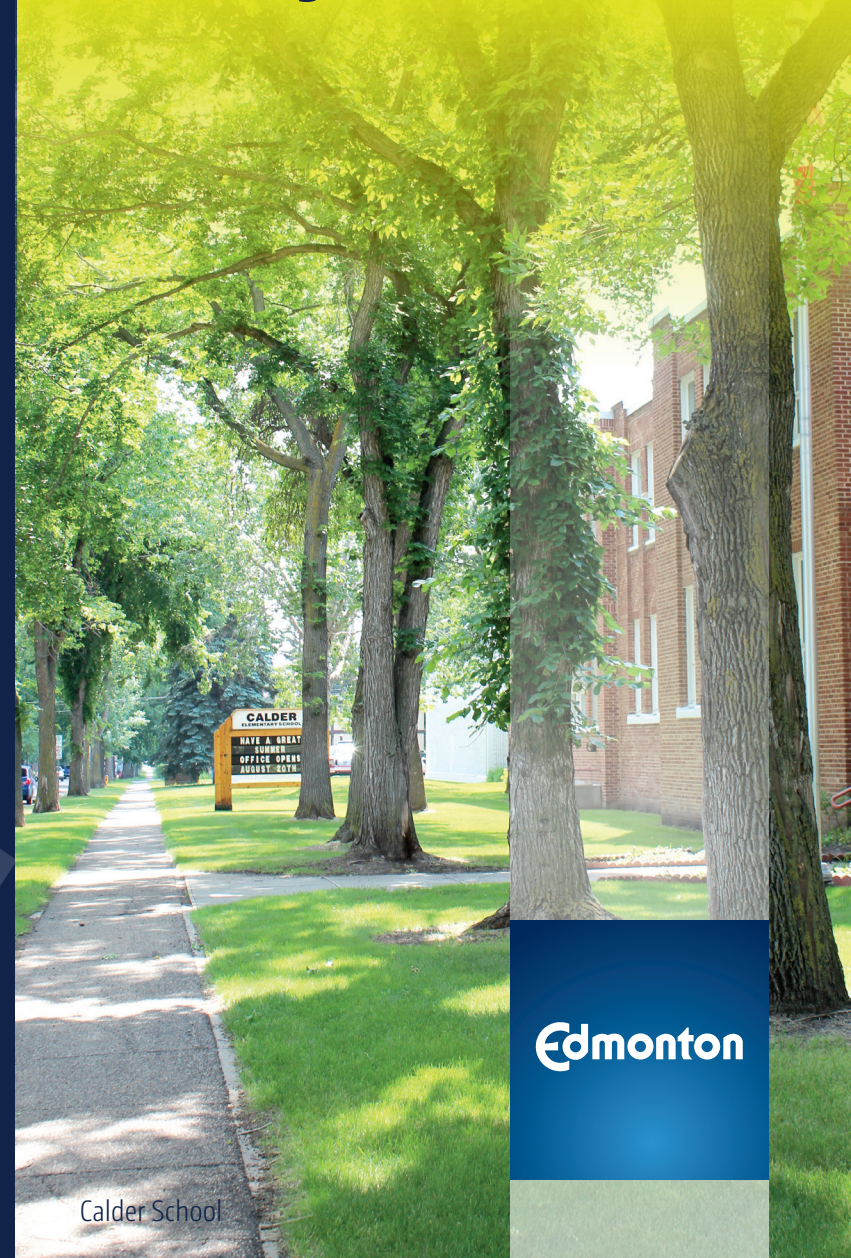


Printed 2014



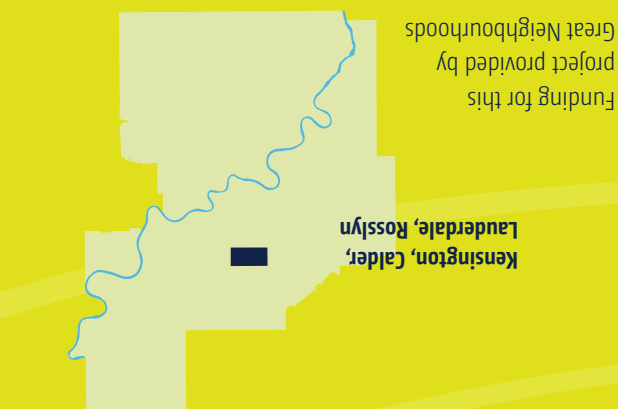
COMMUNITY WALKING MAP

Kensington, Calder, Lauderdale & Rosslyn



Edmonton

Calder School



Funding for this
project provided by
Great Neighbourhoods

Kensington, Calder,
Lauderdale, Rosslyn

Rosslyn was annexed by Edmonton before the First World War but it was not until the late 1950s that Rosslyn was subdivided with the area filled up by the late 1960s. Rosslyn is mostly residential with commercial development along 134 Avenue and in the Northeast Corner the Rosslyn Shopping Centre that opened in July of 1962.

Rosslyn

For many years Kensington was home to the "Kensington Queen".

from the Elementary School and at the intersection of 132 Avenue and 127 Street.

The original subdivision was abandoned before any development occurred and was not replotted until the Noel Dant plan for post-war residential development. The earlier grid pattern was replaced in the 1950s by a model in which services were centrally located with enclosed road access. This is evidenced today by the shopping centres across

Kensington

Grand Trunk Park developed in the Northwest corner with the southern portion locally called Onion Park due to a farmer growing onions. It was also considered a crash zone for the City Airport. Planner Noel Dant announced in February, 1951 that progress was being made on designing and completing new post-war residential neighbourhoods. Plans were designed to route traffic around the new neighbourhoods and not through them.

despite requests from the owners to have Lauderdale taken off the lists. The City Solicitor ruled that the City Commissioners had no power to do this. Many of the first residents worked in the Grand Trunk Pacific Railway yards.

By 1918 the Williamson Brothers owned most of Lauderdale but the area was put into the city tax sale at the end of the First World War, near by the area.

Lauderdale

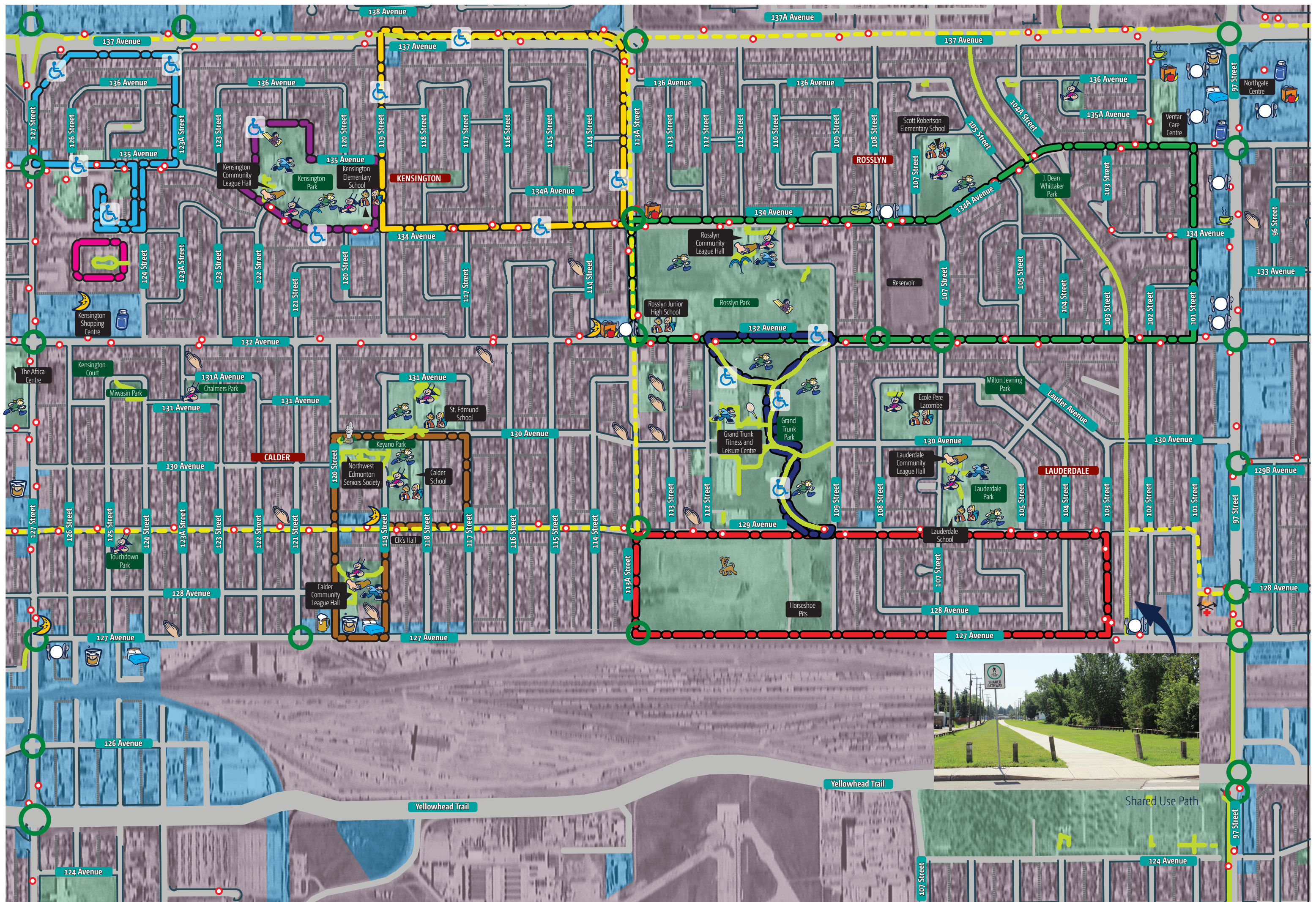
Lauderdale dates back to James Lauder who farmed on land he owned builders who lived in Calder Jones was a brick layer and stonemason who lived at 13067 – 115 Street, a Municipal Historic Resource.

Calder's history is rooted in railway history and has remained a railway community with CN's Walker Yard an adjacent neighbour to the south. In 1909 the Grand Trunk Pacific Railway established a divisional point at Calder and began construction of its round house and repair shops. A.W. Young then built a small general store soon followed by boarding houses and restaurants. Construction workers first lived in tents. The first church also held services in tents. A school district was organized in September 1910 for local children. By October 1910 there were 45 houses, three stores, three churches, a school and a "modern and complete telephone service".

Calder lots sold for \$175 and \$225 for corner lots.

Rosslyn Park





KENSINGTON, CALDER, LAUDERDALE & ROSSLYN

Legend



Sample walking routes

0.2 km	Meadow's Loop
1.2 km	Kensington School
1.9 km	Grand Trunk Walk
2.0 km	Shepherd's Walk
2.0 km	Calder Old Towne Walk
2.5 km	Garden Walk
3.1 km	Ardith's Walk
3.8 km	Olive's Walk



- Commercial
- Parkland
- Residential Area
- Crosswalk with Signal
- Bus Stop
- On Street Bike Route
- Paved Shared Use Pathway
- Roadway
- Alleys
- Sidewalk

Scale

