



# *Welcome!*

## *King Edward Park Neighbourhood Renewal Information Session*



THE WAY AHEAD

TRANSFORMING | **EDMONTON**

BRINGING OUR CITY VISION TO LIFE



# ***Presentation Format***

*Three (3) part presentation:*

- 1. Design Process*
- 2. Neighbourhood Reconstruction*
- 3. Local Improvement Process*

*Staff on hand to answer questions after the presentation.*

*Please complete your evaluation forms.*



THE WAY AHEAD

TRANSFORMING | **EDMONTON**

BRINGING OUR CITY VISION TO LIFE



# *Neighbourhood Renewal Design Process*



***Presented By: Trevor Singbeil, Project Manager***

(Photo Taken By AECOM: 2011)



**THE WAY AHEAD**

**TRANSFORMING | EDMONTON**

BRINGING OUR CITY VISION TO LIFE



# *Introduction*

- Summary of Design and Construction Process
- Design Consultation
- Design Status
- Specific Areas of Improvement



THE WAY AHEAD

TRANSFORMING | **EDMONTON**

BRINGING OUR CITY VISION TO LIFE

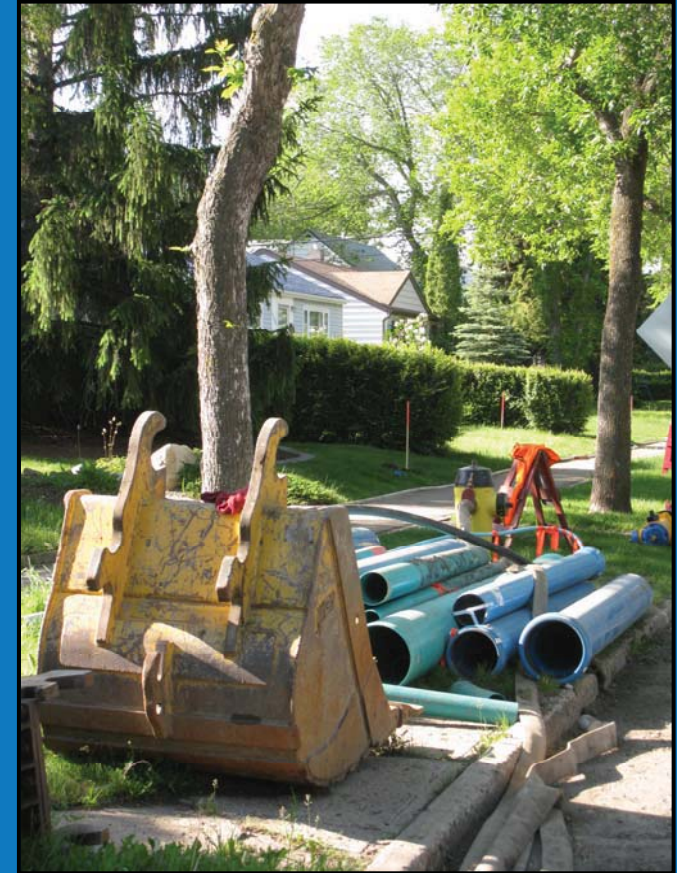
# King Edward Park Neighbourhood Renewal

## ➤ *Reconstruction*

- *Reconstruct the Pavement*
- *Replace Curbs and Gutters*
- *Replace Sidewalks*
- *Upgrade Standard Street Lighting*
- *Coordinate with Other Projects*
  - *Internal (City)*
  - *External (Utility)*

## ➤ *Surface Works Conceptual Cost*

- *\$35 Million*



(Photo Taken By J. Nicholls: June 16, 2010)

THE WAY AHEAD

TRANSFORMING | EDMONTON

BRINGING OUR CITY VISION TO LIFE



# *Design Consultation*

- Public
- Community League Executive
- Transportation Services



THE WAY AHEAD

TRANSFORMING | **EDMONTON**

BRINGING OUR CITY VISION TO LIFE

# ● ● ● *Design Status*

- Preliminary Walkthrough → Completed
- Preliminary Drawings → Completed
- In-Field Detailed Design → In Progress



(Photo Taken by AECOM: 2011)

# ● ● ● | *Design Improvements*

- Address Accessibility Issues
- Meet Design & Construction Standards
- Select Curb and Gutter Type

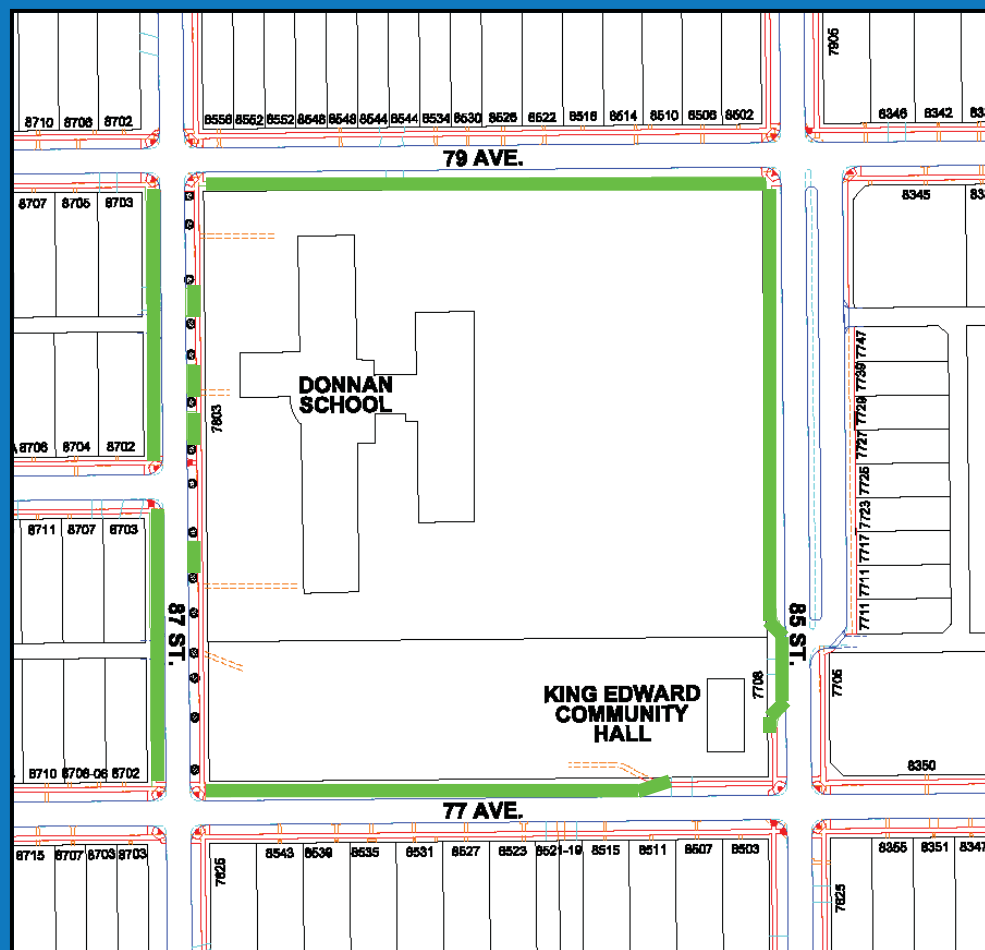


(Photo Taken by AECOM: 2011)

# King Edward Park Addressing Accessibility

## Constructing New Sidewalk

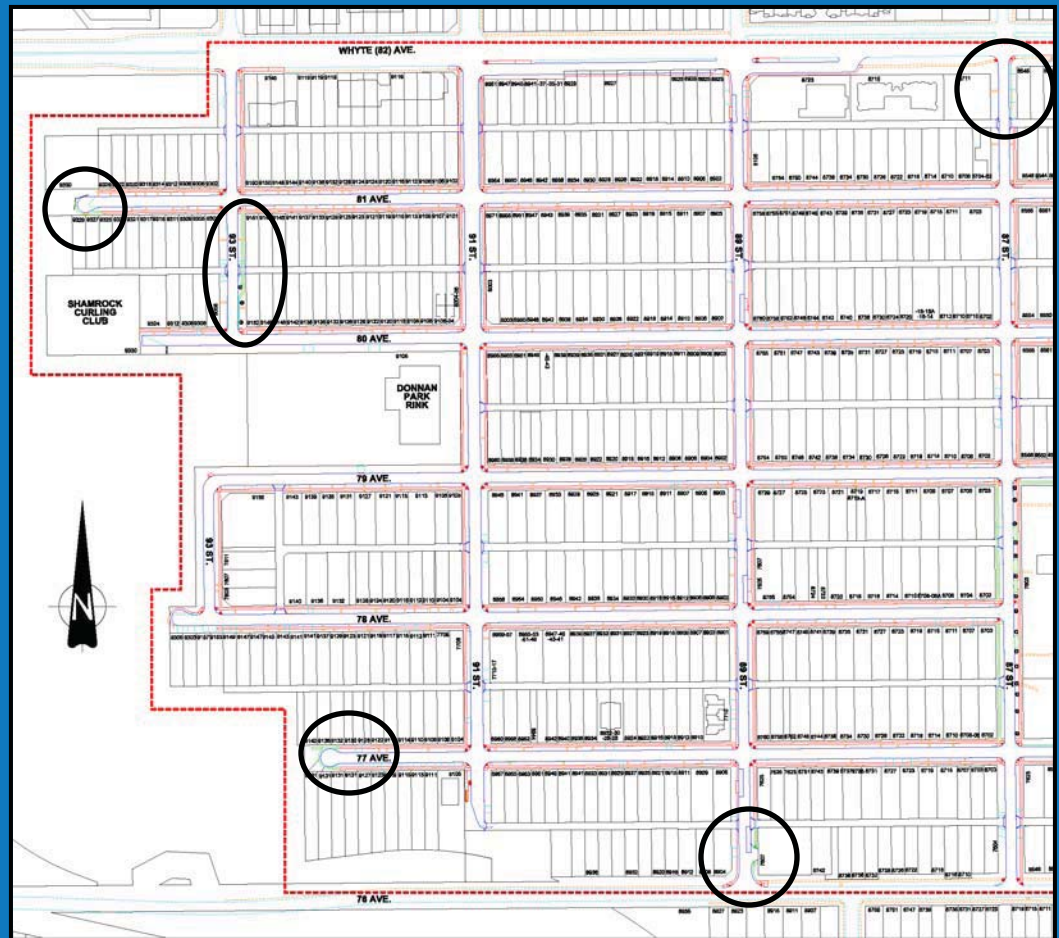
- Along the west side of 87 Street, linking 77 Avenue to 79 Avenue
- Along the north side of 77 Avenue, linking 85 Street to 87 Street
- Along the south side of 79 Avenue, linking 85 Street to 87 Street
- Along the west side of 85 Street, linking 77 Avenue to 79 Avenue
- Four concrete pads on the east side of 87 Street, between 77 Avenue and 79 Avenue



# *King Edward Park Addressing Accessibility*

## Constructing New Sidewalk

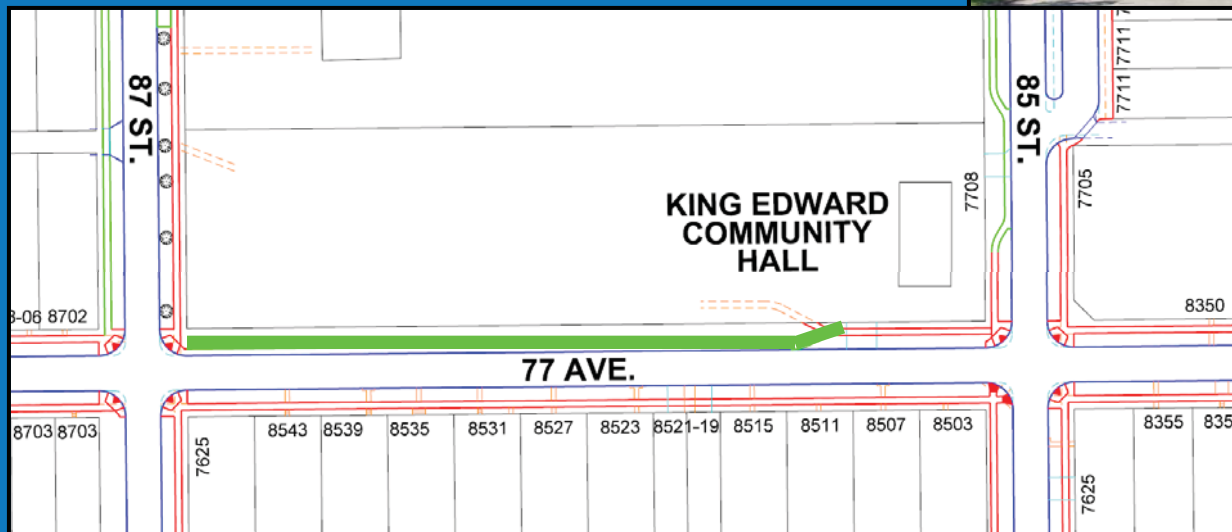
- Around the south portion of the cul-de-sac on 81 Avenue, west of 93 Street
- Along the east side of 93 Street, linking 80 Avenue to 81 Avenue
- Around the cul-de-sac on 77 Avenue, west of 91 Street
- Along the east side of 89 Street, linking 76 Avenue to the alley
- Along the east side of 87 Street, linking 82 Avenue to the alley



# *King Edward Park Addressing Accessibility*

## School Bus Drop-Off Zone

- 77 Ave, between 85 St and 87 St

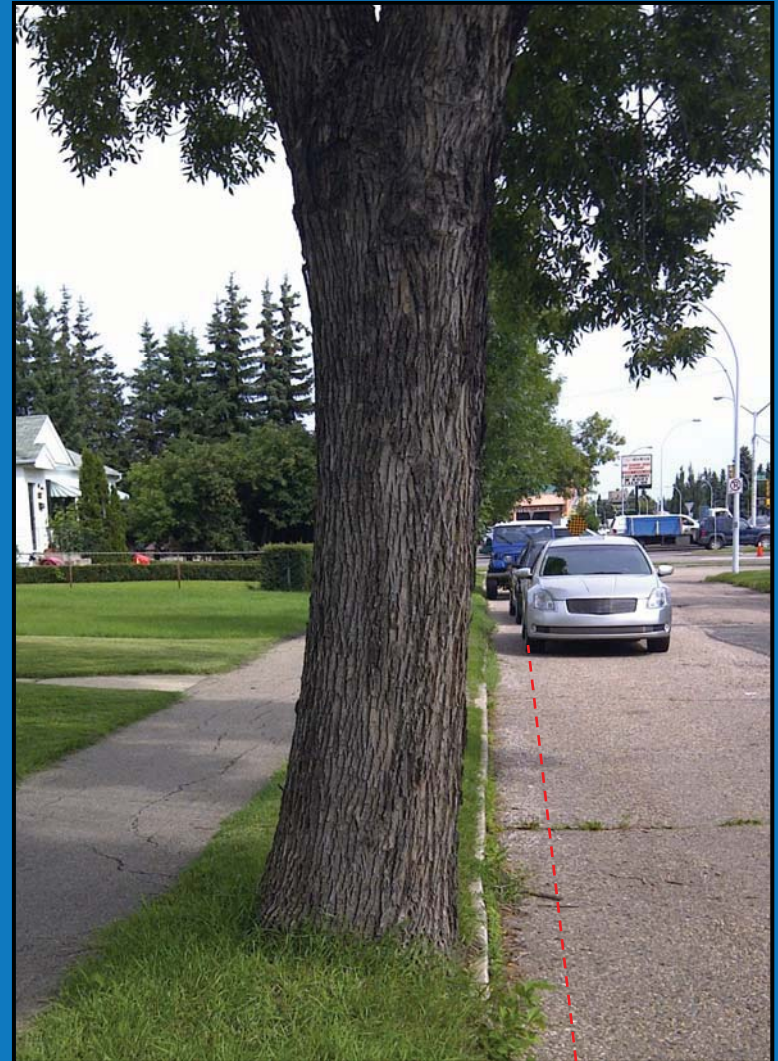
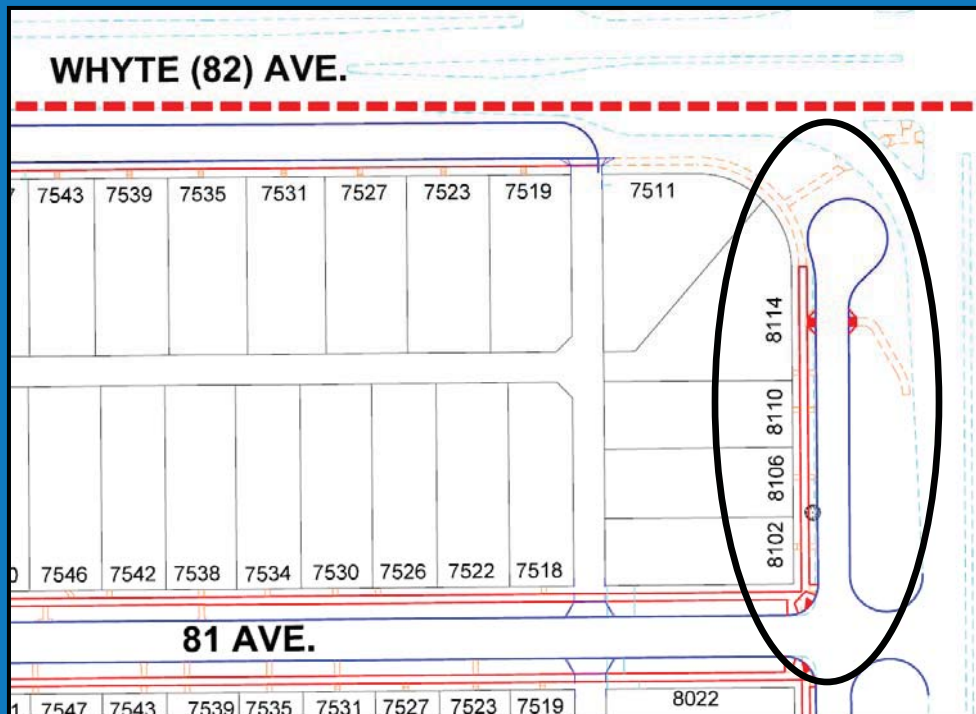


(Photo Taken By AECOM: 2011)

# King Edward Park Design Standards

## Road Narrowing:

- 75 St service road, north of 81 Ave



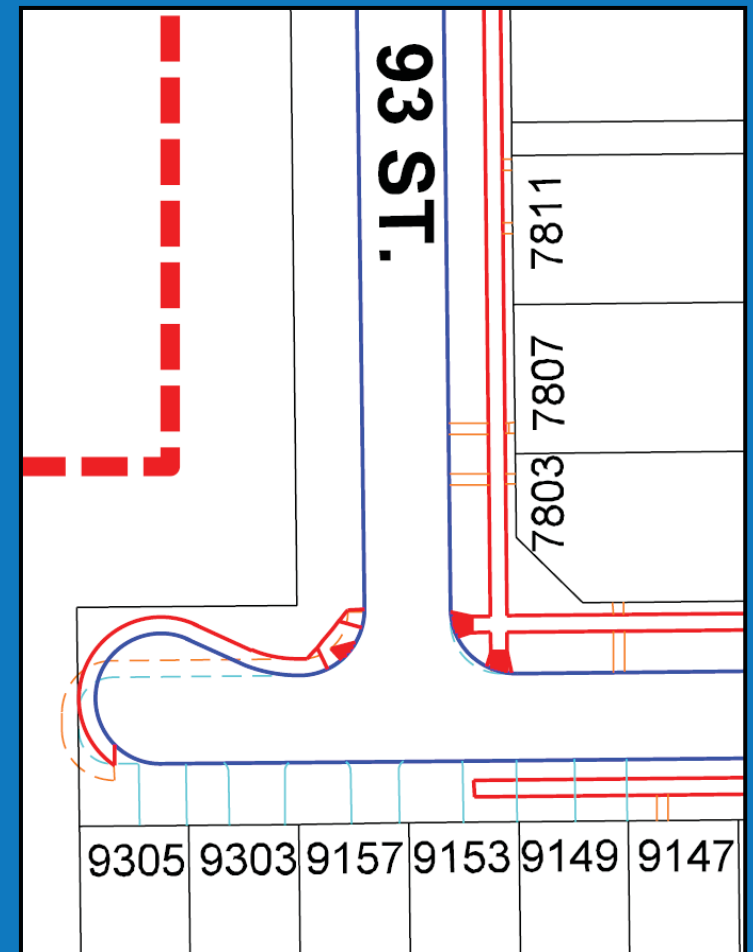
# King Edward Park Design Standards

## Road Realignment at:

- 78 Ave cul-de-sac, west of 93 St
  - *Enlarging the cul-de-sac to allow vehicles enough space to turn around*

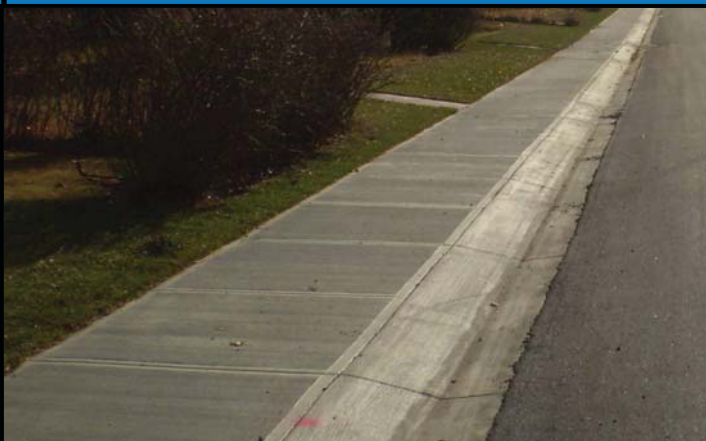


(Photo Taken By T. Singbeil: August 4, 2011)



# King Edward Park Curb Type Selection

ROLLED  
FACE



STRAIGHT  
FACE



THE WAY AHEAD

TRANSFORMING | EDMONTON

BRINGING OUR CITY VISION TO LIFE

# King Edward Park Curb Type Selection

## ➤ *Rolled Face Curb*

- *Local Roads*



(Photo Taken By J. Nicholls: 2010)

## ➤ *Straight Face Curb*

- *Collector Roads*
- *Commercial Areas*
- *Bus Routes*
- *School Areas*



(Photo Taken By J. Nicholls: 2010)

THE WAY AHEAD

TRANSFORMING | EDMONTON

BRINGING OUR CITY VISION TO LIFE

# King Edward Park Displays



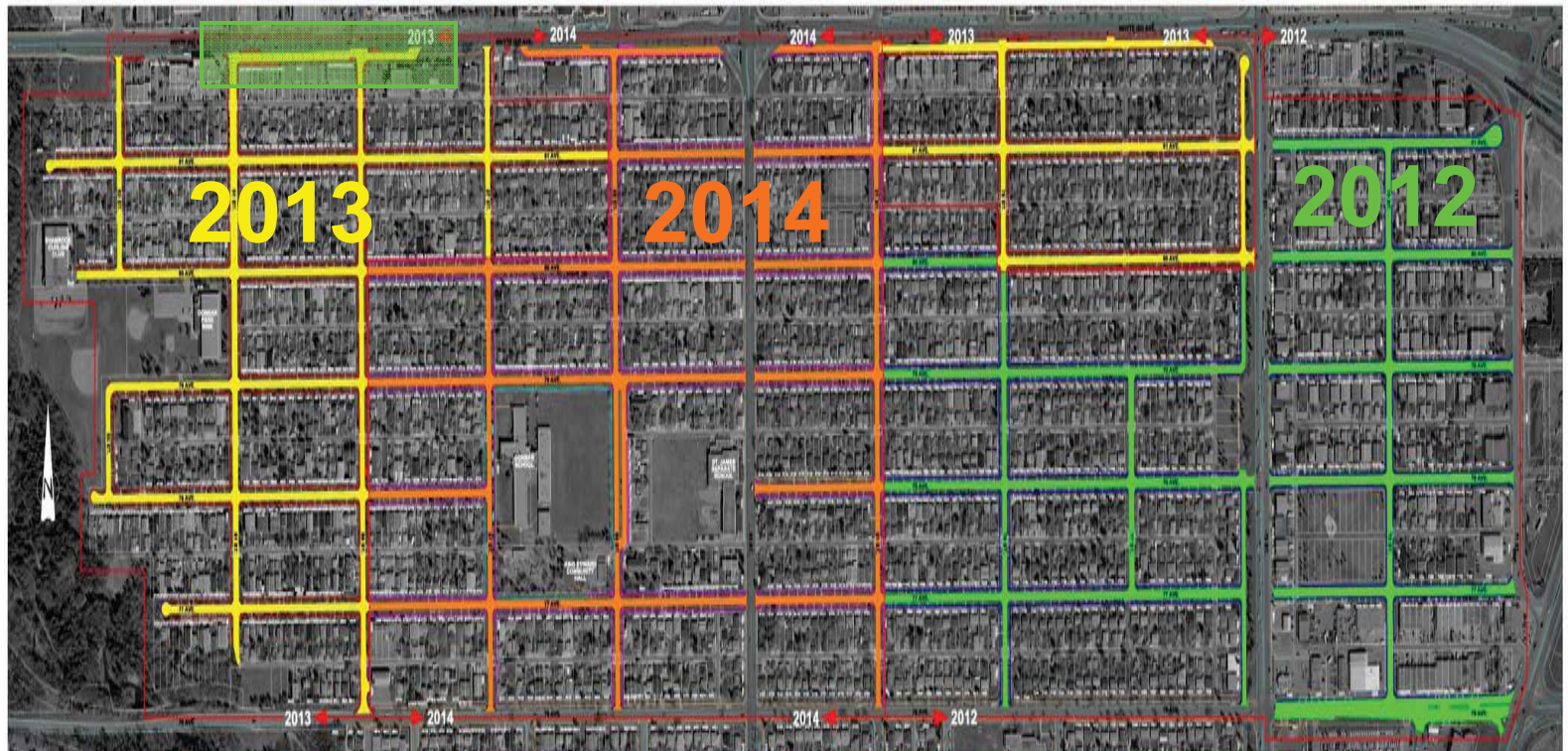
## KING EDWARD PARK PROJECT SCOPE 2012 - 2014

### DETAIL LEGEND

- 2012 PROPOSED ROAD REPAIRS
- 2012 PROPOSED SIDEWALK RECONSTRUCTION
- 2012 PROPOSED NEW SIDEWALK CONSTRUCTION
- 2013 PROPOSED ROAD REPAIRS
- 2013 PROPOSED SIDEWALK RECONSTRUCTION
- 2013 PROPOSED NEW SIDEWALK CONSTRUCTION
- 2014 PROPOSED ROAD REPAIRS
- 2014 PROPOSED SIDEWALK RECONSTRUCTION
- 2014 PROPOSED NEW SIDEWALK CONSTRUCTION
- EXISTING CURB & GUTTER
- EXISTING WALK & BIKEWAY
- 2012 - 2014 PROJECT LIMITS
- EXISTING TREES

SUBJECT TO  
REVISION

AECOM



# ● ● ● | *Summary*

- Update to Current Design Standards
- Increase Accessibility
- Improve Livability



(Photo Taken By AECOM: 2011)



## ***For More Information Contact:***

***Trevor Singbeil, Project Manager***

*Neighbourhood Renewal, Roadways Design  
Transportation Services Branch*

***Phone: 780-423-5373***

***E-mail: [trevor.singbeil@edmonton.ca](mailto:trevor.singbeil@edmonton.ca)***



**THE WAY AHEAD**

**TRANSFORMING | EDMONTON**

BRINGING OUR CITY VISION TO LIFE