



Walterdale Bridge Replacement

edmonton.ca

Public Information Session

March 22, 2011



Meeting Purpose

edmonton.ca

- Provide background and context information
- Update on progress since November 2010 Open House
- Share the recommended option for the new Walterdale Bridge alignment and rationale for the recommendation
- Share the recommended bridge style for the new Walterdale Bridge and rationale for the recommendation
- Answer your questions and receive your comments about the recommendations
- Review timelines for duration of project

Project Timelines

edmonton.ca



History to Date

- Replacement bridge needed
- Roadway alignment and bridge style options developed: May 2010 – Feb. 2011
- Stakeholder meetings and public open house: Fall 2010
- Revisions based on technical analysis and public feedback
- Jan. 2011 Presentation to Transportation and Public Works (TPW)
- Recommended option developed



Agenda

edmonton.ca

- Project Timelines
- Key Design Considerations
- Bridge Alignment
- Historical and Cultural Considerations
- Bridge Style
- Next Steps
- Question & Answer Session



Key Design Considerations

edmonton.ca

- Input from Public Open House, stakeholder meetings and interviews
- Access/traffic accommodation
- Detouring and closure impacts
- Signature bridge
- Traditional Burial Grounds and Fort Edmonton Cemetery and belvedere site, historical resources
- Environmental policies and procedures
- Other area plans
- Pedestrian and cyclist access
- Utility staging

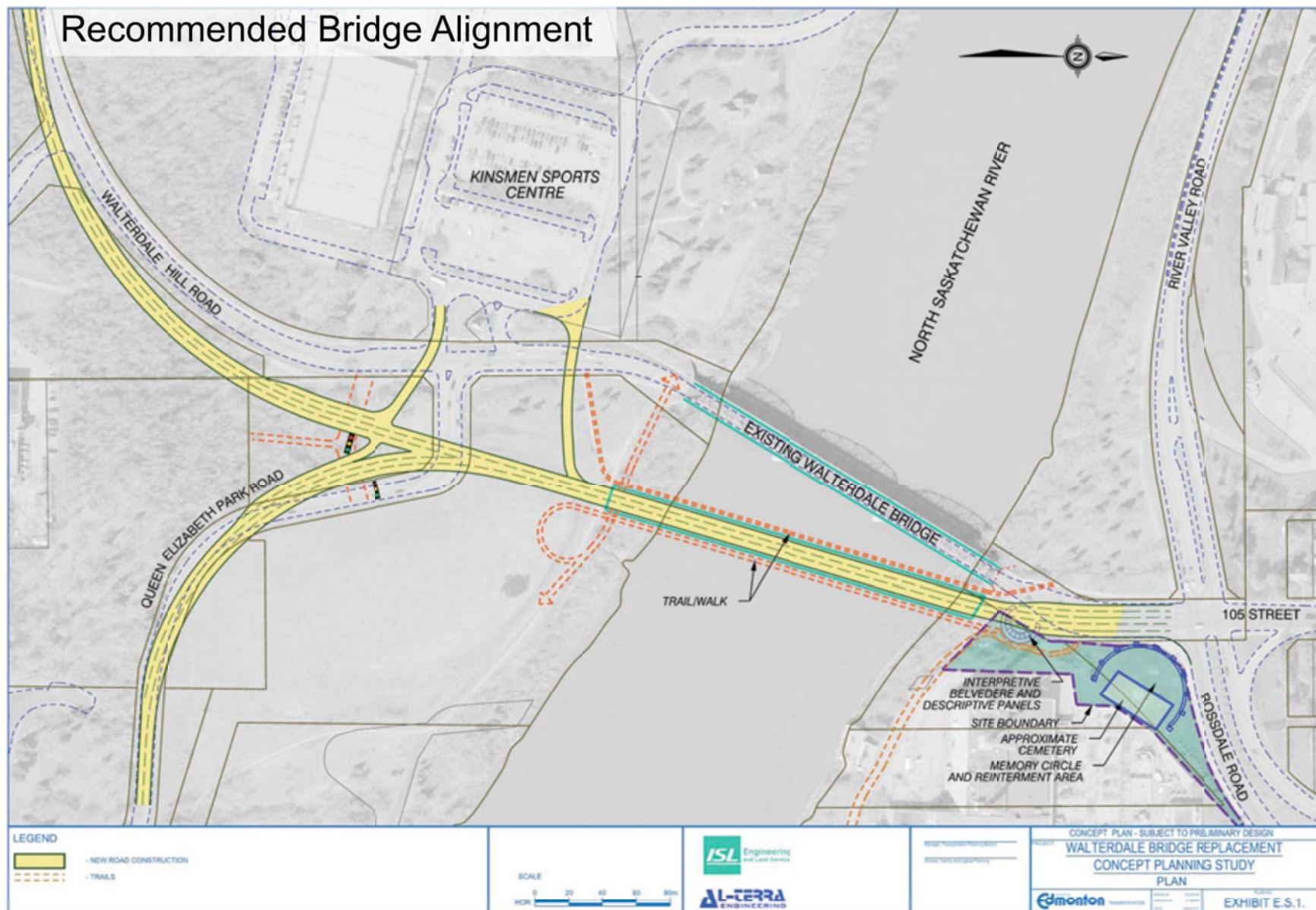


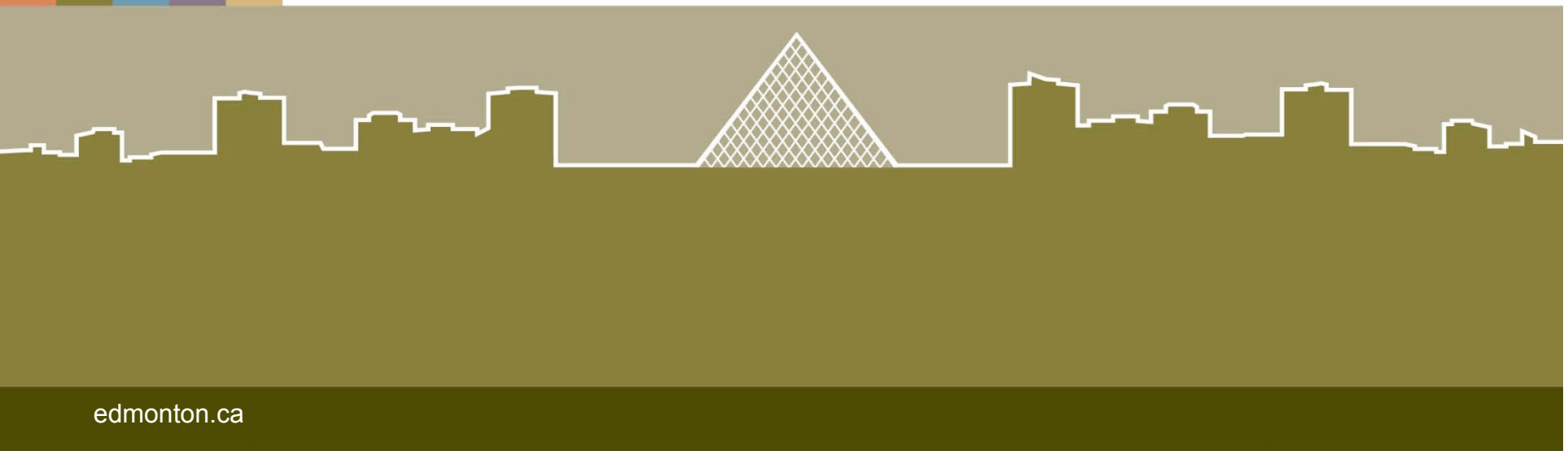
Consultation to Date

edmonton.ca

- Conducted meetings/interviews with stakeholder groups
- Meetings with Aboriginal Elders, including an Elders gathering and an on-site ceremony
- Public Open House held November 18, 2010 to gather input

Recommended Bridge Alignment





edmonton.ca

Historical/Cultural Considerations

March 22, 2011
Slide 8



Historical/Cultural Considerations

edmonton.ca

1906 photo



March 22, 2011
Slide 9

THE CITY OF
Edmonton

Historical/Cultural Considerations

edmonton.ca

1912

5th STREET BRIDGE
EDMONTON

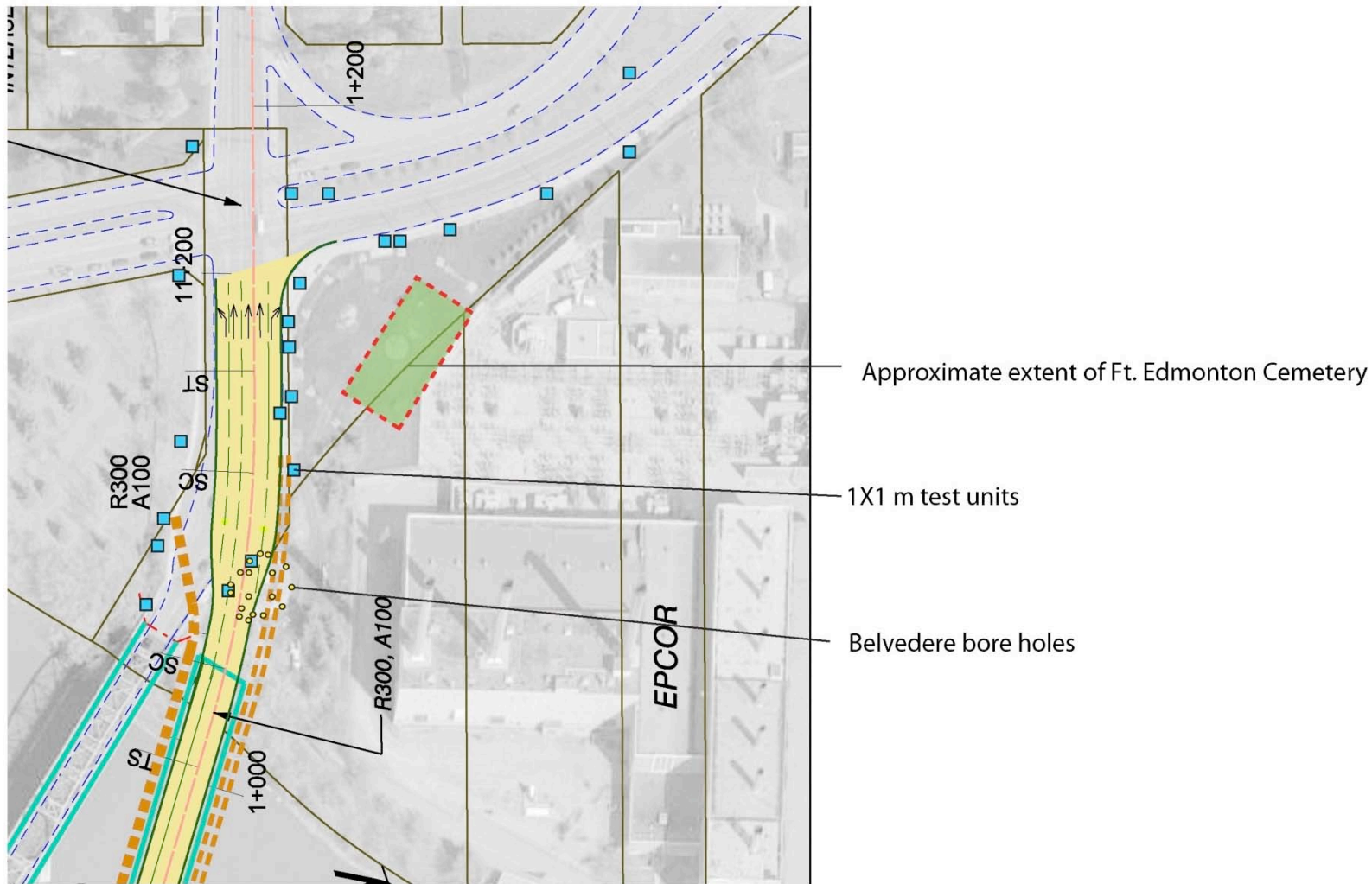


March 22, 2011
Slide 10

THE CITY OF
Edmonton

Historical/Cultural Considerations

edmonton.ca





Historical/Cultural Considerations

edmonton.ca

Cultural Resource Management Plan to include

- Surface soil stripping to inspect for cultural features
- Deep archaeological testing in development area where previous archaeological assessment has not taken place
- Where subsurface testing prior to construction is not possible, monitoring of ground disturbance by an archaeologist
- Where potentially fossil-bearing bedrock deposits will be impacted, monitoring and/or assessment by a palaeontologist
- Development a concept strategy for the replacement, reconstruction, and/or relocation of the interpretive belvedere
- Any human remains identified during the project to be treated with respect and reinterred to the Fort Edmonton Cemetery and Traditional Burial Grounds

A Signature Bridge...

edmonton.ca

- **Point of pride**
 - Entrance to downtown
 - Touch the water
- Angus L. Macdonald Bridge, Halifax
 - Brooklyn Bridge, New York
 - Lion's Gate Bridge, Vancouver



Photo by
Tiago Fioreze



Bridge Requirements

edmonton.ca

River
Crossing

- Vehicular traffic
- Pedestrians
- Cyclists



Bridge Requirements

edmonton.ca

River Crossing

- Vehicular traffic
- Pedestrians
- Cyclists

Respect

- Existing bridge heritage
- History of site
- Legislature grounds
- Adjacent neighborhoods
- Environment



Bridge Requirements

edmonton.ca

River Crossing

- Vehicular traffic
 - Pedestrians
 - Cyclists
-

Respect

- Existing bridge heritage
 - History of site
 - Legislature grounds
 - Adjacent neighborhoods
 - Environment
-

Legacy Residents/Tourists

- 1% for public art

Recommendation

edmonton.ca



March 22, 2011
Slide 17

THE CITY OF
Edmonton



Arch

edmonton.ca

- Strong visual impact
- Announces downtown
- Contemporary and iconic quality
- Classic form that respects existing bridge, and relates to High Level and Low Level bridges
- Beautiful artistic form
- Slender deck appearance
- Balances function with beauty
- Connects south and north banks
- No piers in water
- Can separate vehicular traffic from pedestrians and cyclists
- Place to touch the water

Winter

edmonton.ca



March 22, 2011
Slide 19

THE CITY OF
Edmonton

Night

edmonton.ca



March 22, 2011
Slide 20

THE CITY OF
Edmonton

Multi-Use

edmonton.ca



March 22, 2011
Slide 21

THE CITY OF
Edmonton



Next Steps

edmonton.ca

Project Timelines

Recommended Final Plan and Concept Plan Completion

April 2011

Plan to Transportation and Public Works Committee

April 12, 2011

Plan to Council

April 27, 2011

Design (tentative)

May 2011—Feb. 2013

Construction (tentative)

Spring 2013—Fall 2014



Q & A

edmonton.ca

To ensure everyone has a chance to be heard:

- Each speaker will have **2 minutes** for their question or comment. **1 minute** is allowed for **1 follow-up** question.
- **5 people** may ask questions. They will be given microphones.
- Additional questions from same person will not be recognized until no new participants are wanting to ask questions.
- Please use microphones, as this session is being recorded.
- If you are not able to ask your question during the Q&A, please bring it to project staff after the presentation.



Closing

edmonton.ca

- Thank you for attending.
- Please visit the display area to view the recommended bridge alignment and bridge style and to speak with project team members.
- Please fill out the questionnaire.