

THE WAY WE MOVE

Burnewood Proposed Engineering Measures

TRANSFORMING | **EDMONTON**

BRINGING OUR CITY VISION TO LIFE



Nov. 8, 2012



Agenda

- Welcome and Introductions
- Meeting Purpose
- Proposed Speed Management Modifications
- Question and Answer

Roles

- **Listen:** be open to hearing new thoughts and perspectives.
- **Participate:** share your thoughts, questions and ideas
- **Stay on task:** the agenda is designed to get us where we need to go within our timeframe.
- **Trust and Respect:** we all share the same passion for the City.

Introductions

- Maida Zederayko – Senior Engineer Traffic Assessment
- Craig Walbaum – Director Traffic Engineering
- Asif Iqbal – Senior Traffic Safety Engineer
- Dennis Tetreault - Speed Management Traffic Safety Supervisor
- Michelle Chalifoux - Public Engagement Program Manager
- Lorna Stephen – Gray Scott Consulting

Being Discussed Tonight

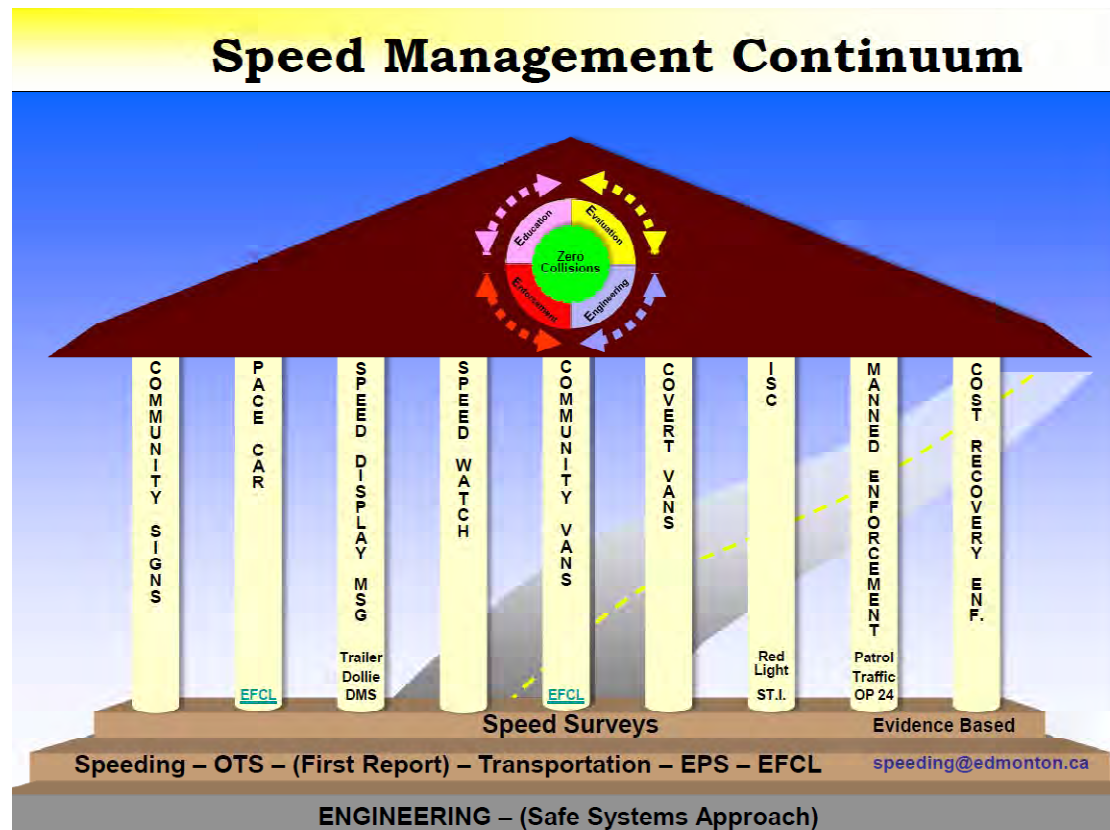
- How 44 Avenue / 44 Street was chosen for engineering measures
- Information on proposed engineering measures
- Information on how to provide community feedback

Not Under Consideration

- Potential engineering measures on other community roadways
- Traffic control changes in place of engineering measures

Background

- Office of Traffic Safety has progressed with development of a speed management continuum to address speeding concerns



Background

- Continued requests for more permanent solutions on collector roadways with significant speeding issues
- External consultant hired to research and recommend successful applications of engineering measures for speed reduction
- From this review, measures conducive to Edmonton roadways were recommended

Initial Criteria for Priority Corridors

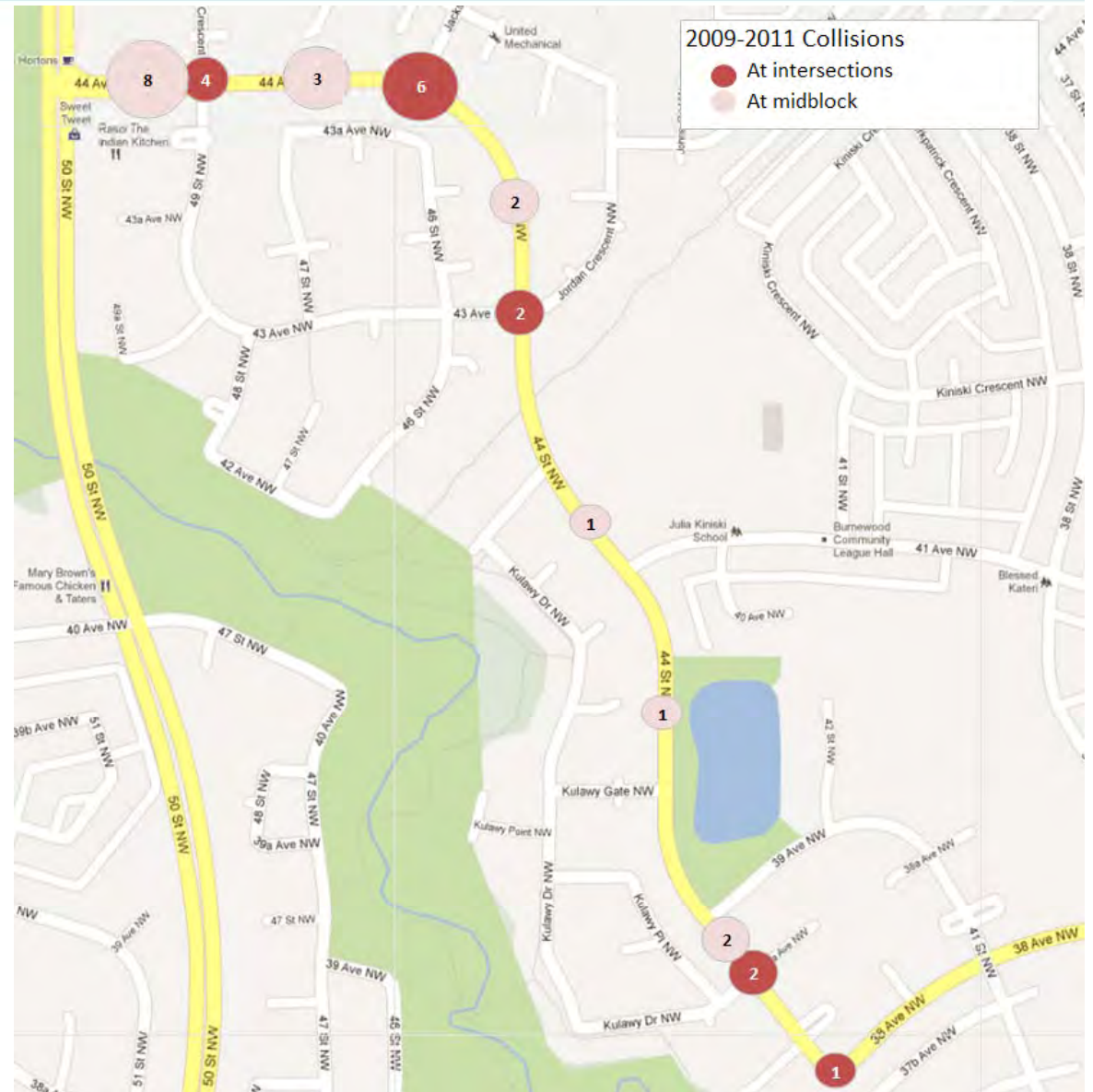
- Cursory analysis to identify priority corridors was based on:
 - collector/bus routes locations with a history of public speeding public complaints and verified speeding,
 - Review of speeding history, traffic activity and collisions,
 - locations not addressed in short term through other programs,
 - locations with nearby elementary / junior high schools and playgrounds

Initial Results Burnewood

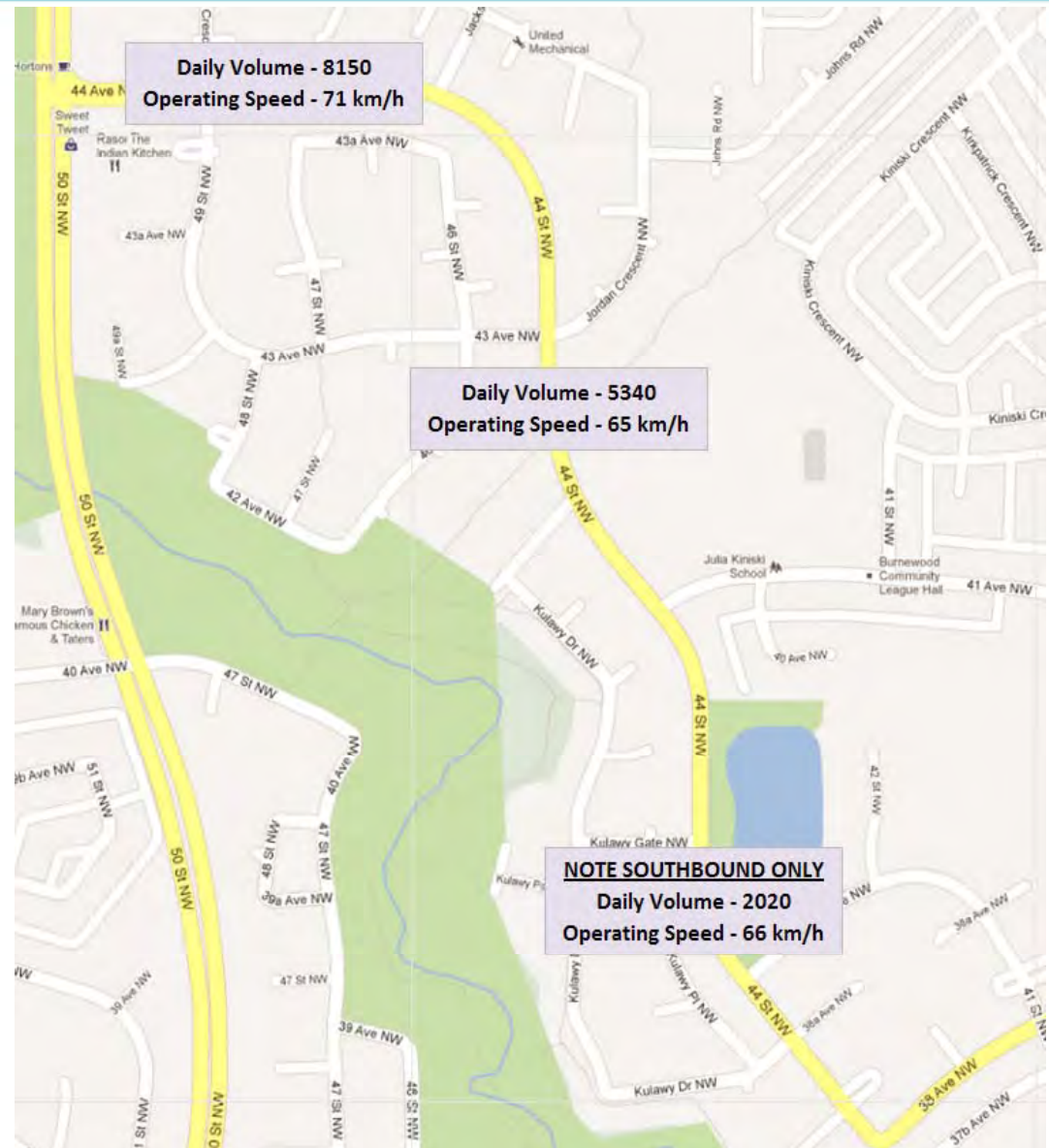
- 44 Avenue From 50 Street to Jackson Road
(posted 50 km/h):
 - Collector roadway
 - History of concerns
- 44 Street From Jackson Road to 38 Avenue
(posted 50 km/h):
 - Collector roadway
 - History of concerns
 - Abuts Julia Kiniski School and parkland

Collisions

- 32 over 3 years
- Includes all collision types

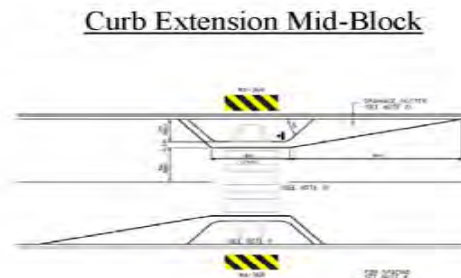
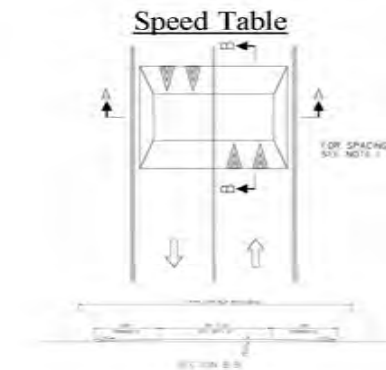
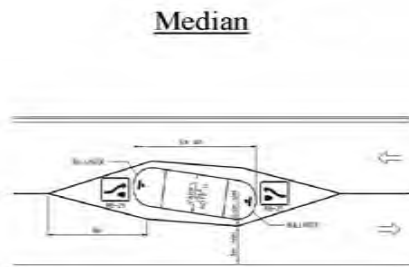
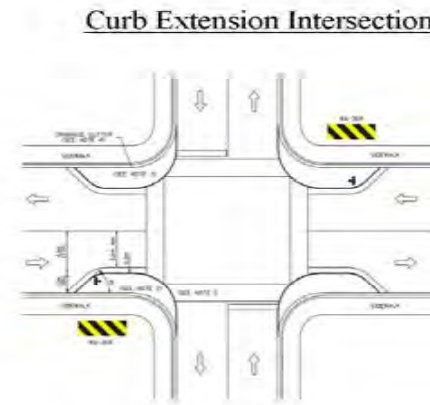
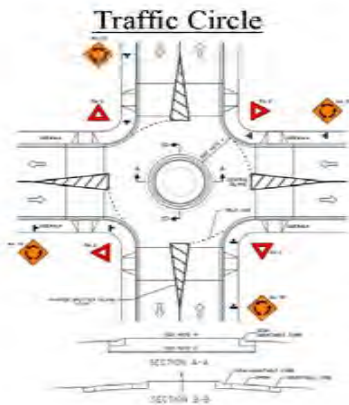


Traffic Volumes and Speeds



Recommended Engineering Measures

Attachment 1- Recommended Engineering Measures



Burnewood Proposed Measures

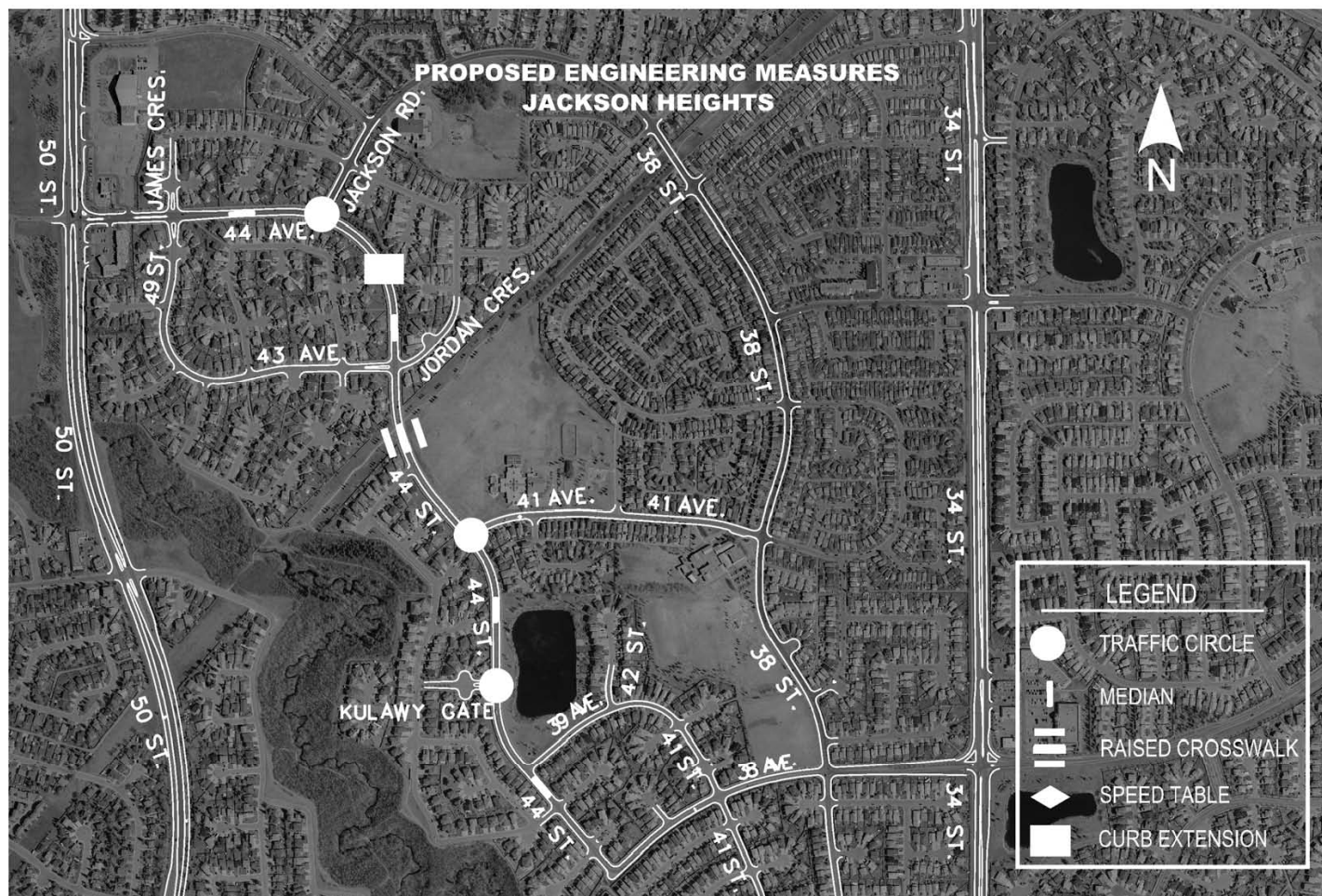


Photo Examples



3-Leg Traffic Circle
(Greisbach Rd and Gresibach School Rd)



Raised Crosswalk
(BC)

Photo Examples



Curb Extension
(96 Ave & 143 St)

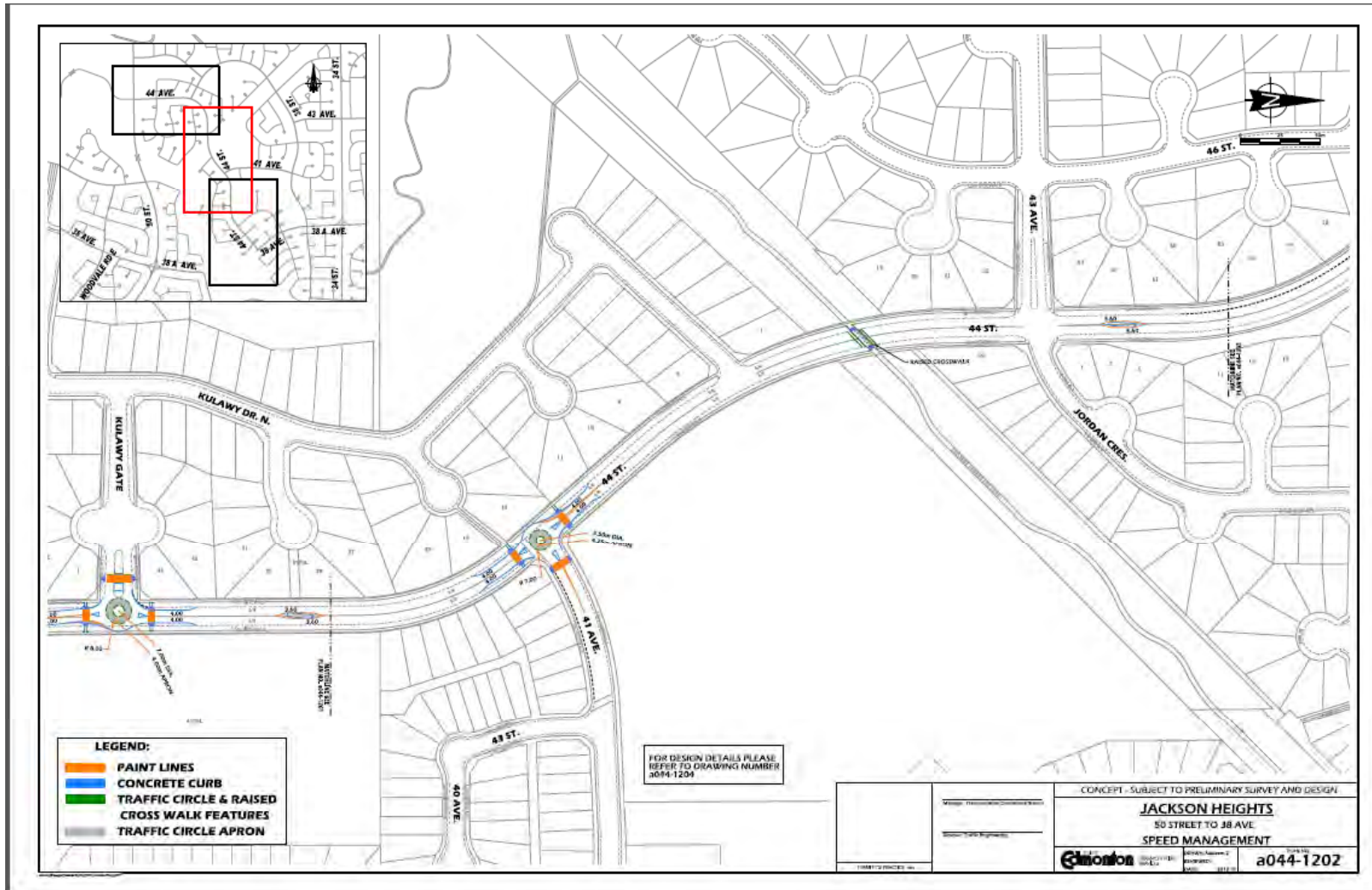


Median
(96 St south of 72 Ave)

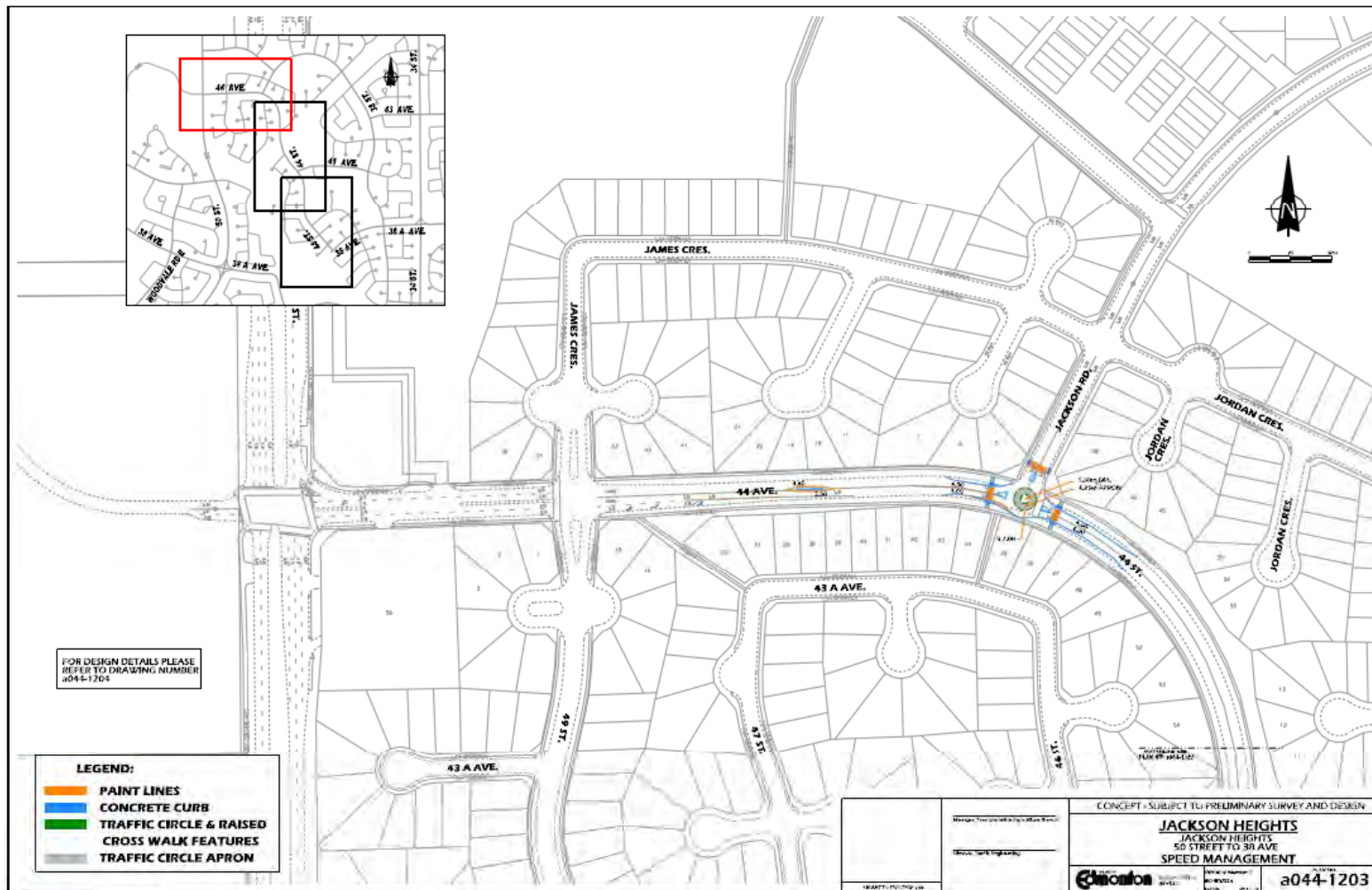
Concept Plan Development



Concept Plan Development



Concept Plan Development



Costs and Funding

- Initial cost estimates \$800,000
- Refined cost estimates \$975,000
- Currently Unfunded - Council to decide funding priorities from photo enforcement revenues

Next Steps

- Committee of Council report on November 21, 2012, with refined costs for Burnewood measures
- Presentation including summary of feedback received by the community
- Funding decision will occur in December 2012

Next Steps

- With council approval of funding priority:
 - detailed design by early 2013
 - construction completion by end of 2013
- No further work will proceed if funding is not approved for 2013

Question and Answer - Rules

- 6 people will be recognized at one time
 - Each will share question, which will be written down on the board
- Once all 6 questions are recorded, team will answer the questions.
 - Questioner will be allowed 1 supplemental question
- 2 rounds of 6 questions will be asked. If time permits, additional rounds may be considered.

Thank you

- Visit display areas
- Complete comment form
 - Here
 - Online at www.edmonton.ca/Burnewood