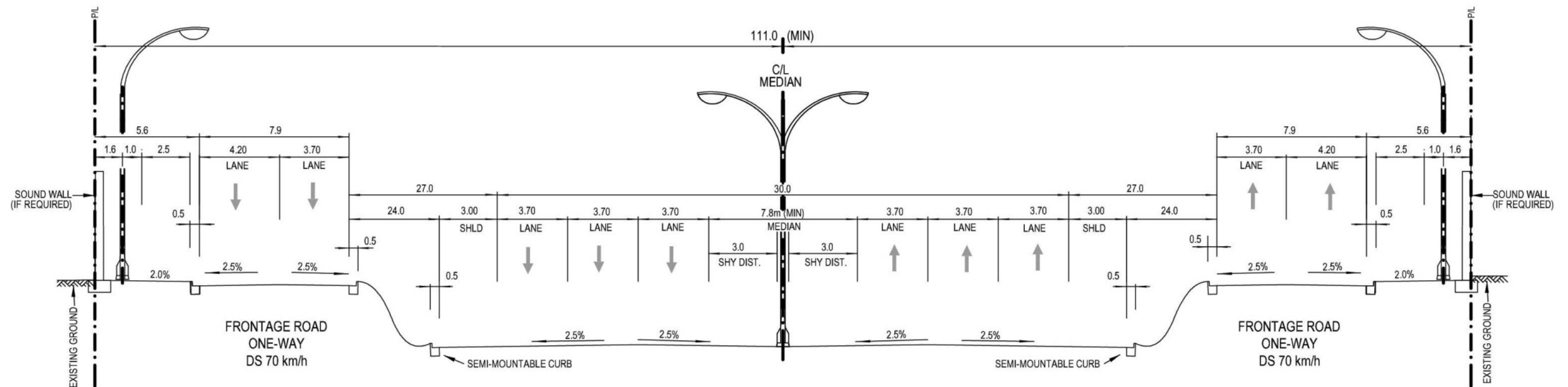
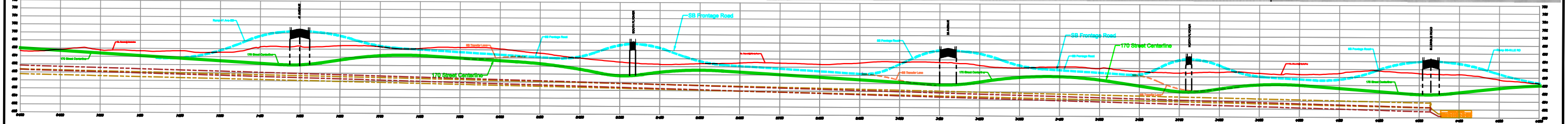
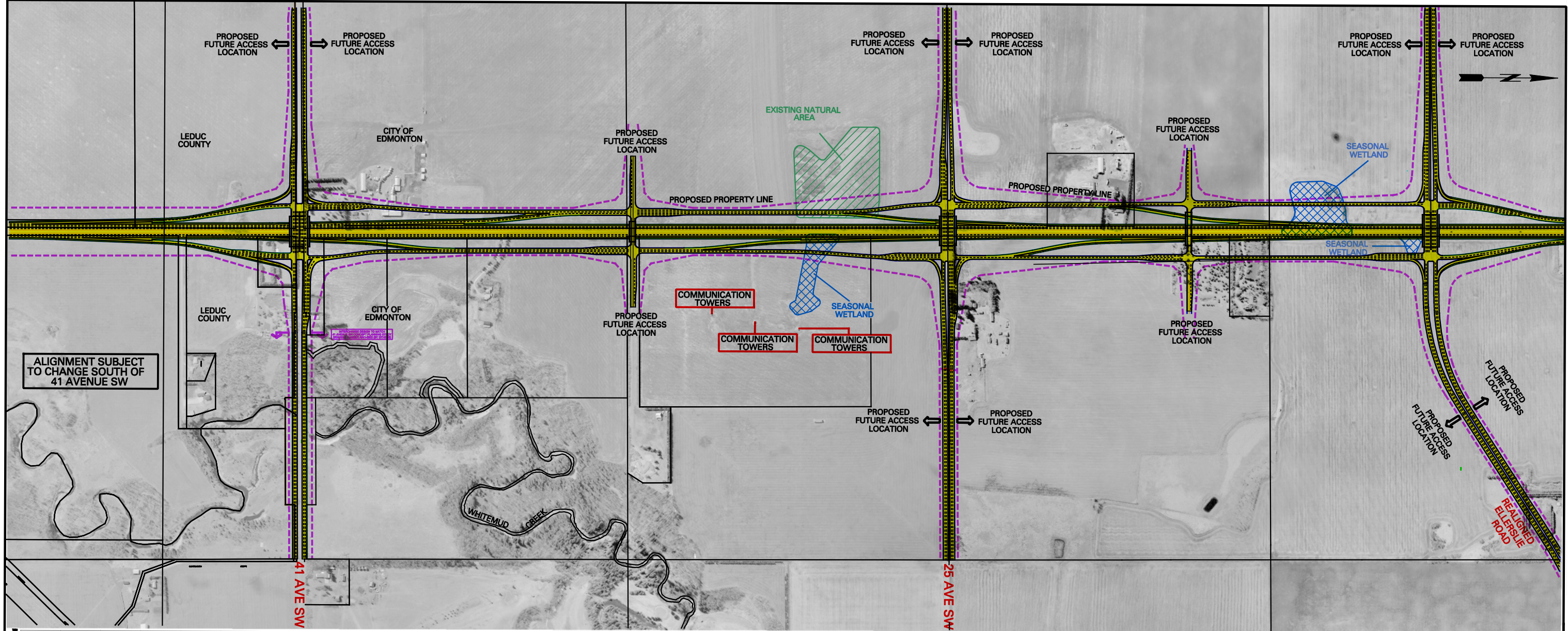





Proposed Typical Cross-Section South of Ellerslie Road (Long-term)



170 Street will be an urban freeway with a posted speed of 100 km/h. Adjacent to the freeway, the frontage roads will be posted at 70km/h.



 		<p>Manager, Transportation Planning Branch</p> <p>Director, Development & Capital Planning</p> <p>Director, Strategic Planning</p> <p>Director, Roadways Design</p> <p>General Supervisor, Strategic Planning</p>	CONCEPT PLAN - SUBJECT TO PRELIMINARY DESIGN		
			<p>PROJECT: 170 STREET</p> <p>PLAN / PROFILE</p> <p>EXHIBIT 3.0</p> <div> TRANSPORTATION</div> <div>DRAWN BY: F. Beatty DATE: Nov. 2010 SCALE: 1:500</div> <div>PLAN NO. S170 XX X01</div>		

Next Steps

- Finalize functional plans for the north and south study areas
- Submit final report to the City in early 2011

Updates to the project information will be
available online at:

www.edmonton.ca/roadplans

Stakeholder Questionnaire

- Please help us by taking the time to fill out the questionnaire provided and drop it in the box near the door.
- The questionnaire can also be returned by mail or e-mail the address on the back of the form.

Thank-you for your participation.