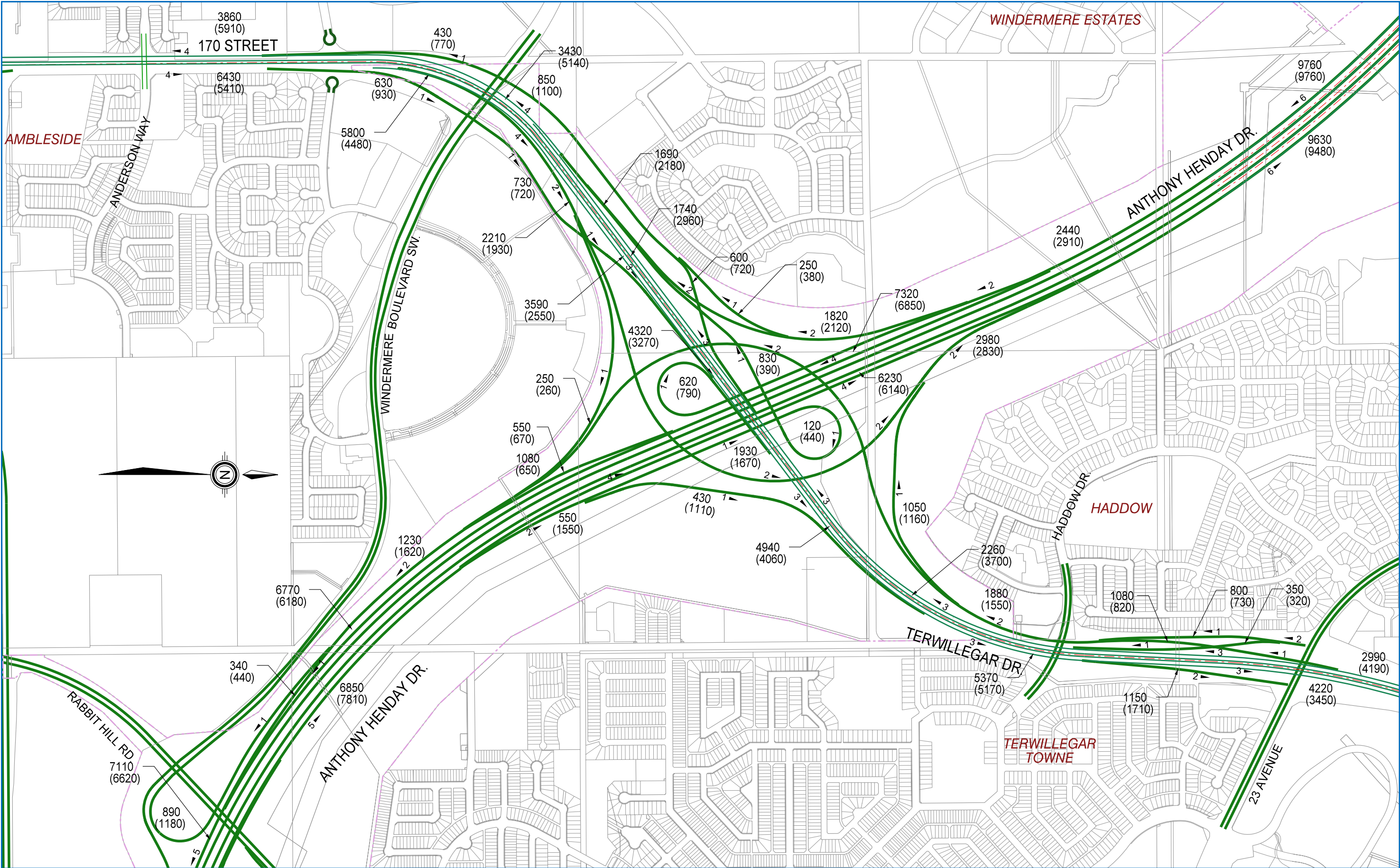


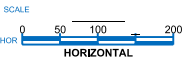
On-going Work

As part of this study, work is on-going in these areas:

- Environmental - Screening has been completed for the south section and is underway in the north section.
- Geotechnical – Preliminary review has been completed to ensure interchange locations are feasible.
- Noise Assessment – Baseline information has been collected and modelling is underway.
- Historical Resources – An Overview determined that there are no resources of a historical nature.



LONG TERM TRAFFIC (3.2M POPULATION MODEL)
AM PEAK - 1140
PM PEAK - (1480)



Manager, Transportation Planning Branch
Director, Development & Capital Planning
Director, Strategic Planning
Director, Roadways Design
General Supervisor, Strategic Planning

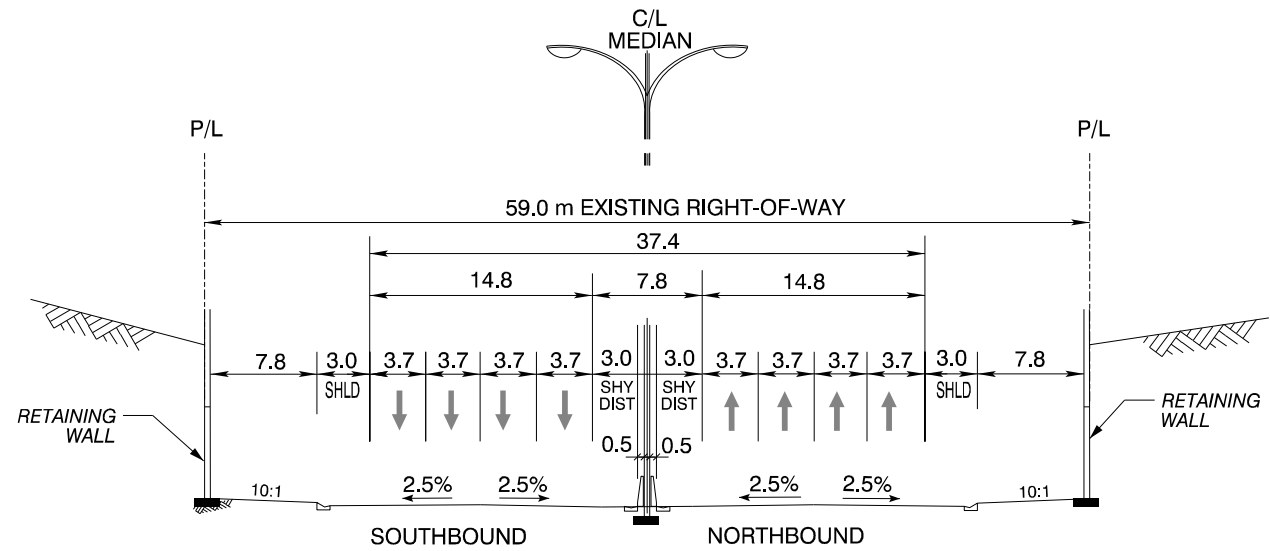
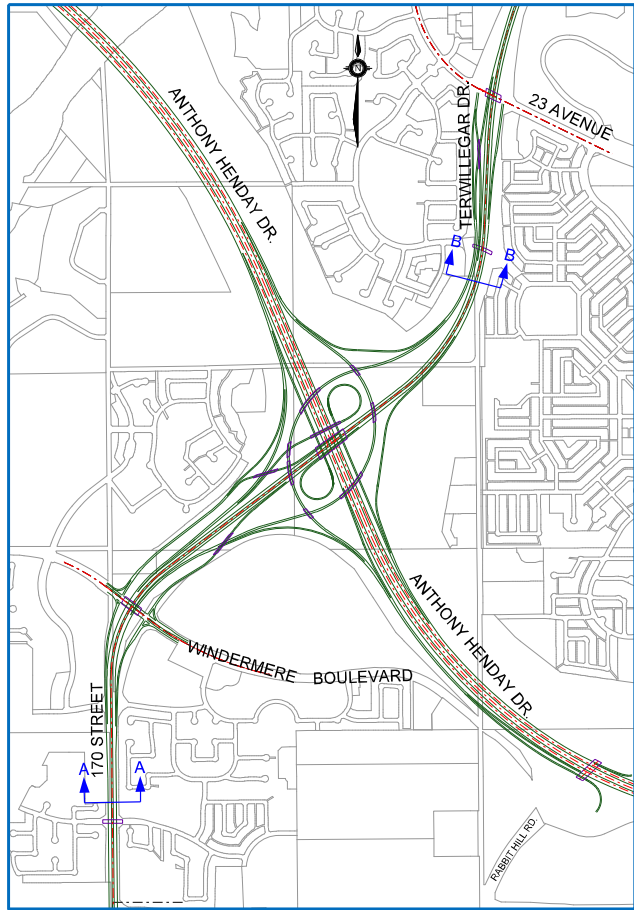
CONCEPT PLAN - SUBJECT TO PRELIMINARY DESIGN

PROJECT:
170 STREET - CONCEPT PLANNING STUDY
170 STREET/ANTHONY HENDAY DRIVE INTERCHANGE
LONG TERM TRAFFIC - OPTION B-3

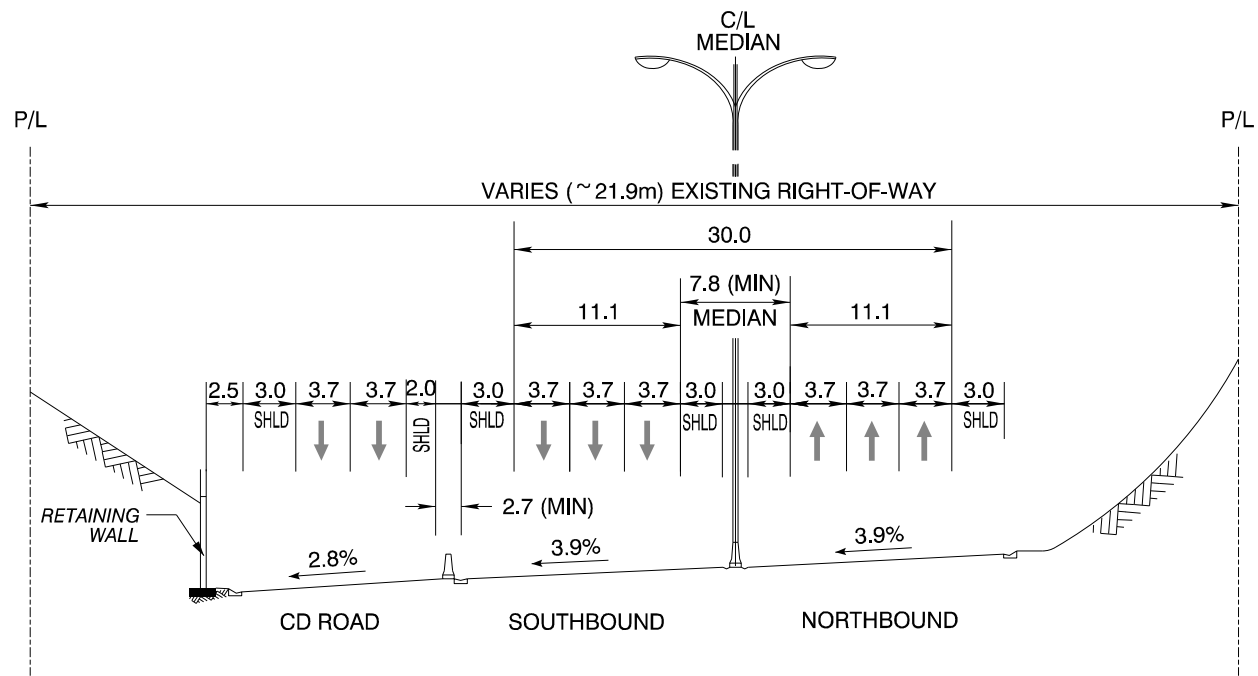


DRAWN BY: B. STAPOR
DATE: October 2010

PLAN NO.
S170 XX XX1



SECTION A-A
170 STREET
TYPICAL CROSS SECTION SOUTH OF WINDERMERE BOULEVARD
NTS



NOTE: CROSS - SLOPE BASED ON DESIGN SPEED:
90km/h - MAIN LINE
70km/h - CD ROAD

SECTION B-B
170 STREET
TYPICAL CROSS SECTION NORTH OF ANTHONY HENDAY DRIVE
NTS

NOTE: CROSS - SLOPE / SUPERELEVATION TO BE DESIGNED BASED ON
HORIZONTAL GEOMETRY APPROPRIATE FOR DESIGN SPEED.

SCALE
NOT TO SCALE
HORIZ



Manager, Transportation Planning Branch
Director, Development & Capital Planning
Director, Strategic Planning
Director, Roadways Design
General Supervisor, Strategic Planning

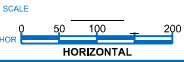
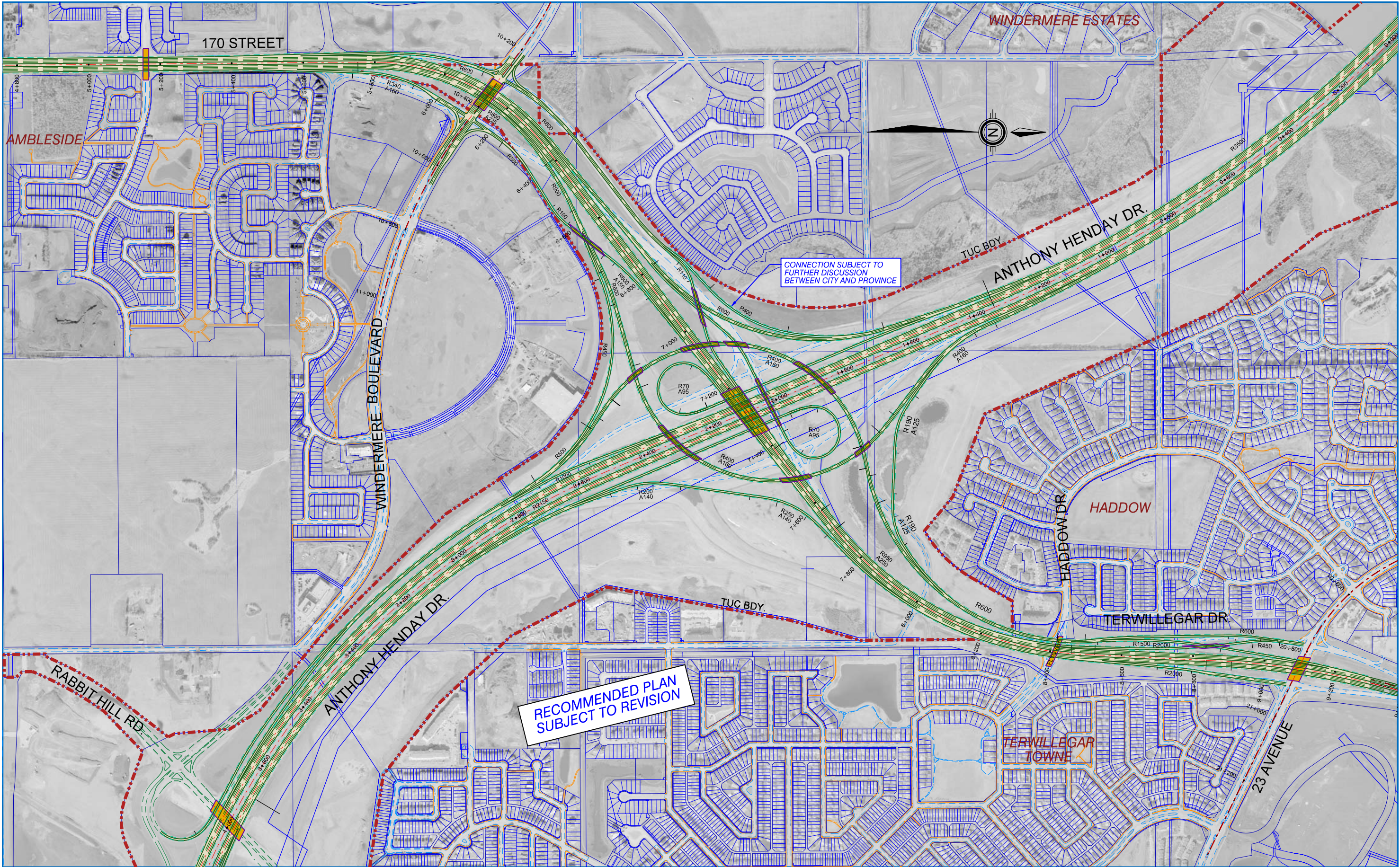
CONCEPT PLAN - SUBJECT TO PRELIMINARY DESIGN

PROJECT:
170 STREET - CONCEPT PLANNING STUDY
170 STREET/ANTHONY HENDAY DRIVE INTERCHANGE
TYPICAL CROSS-SECTIONS

TRANSPORTATION

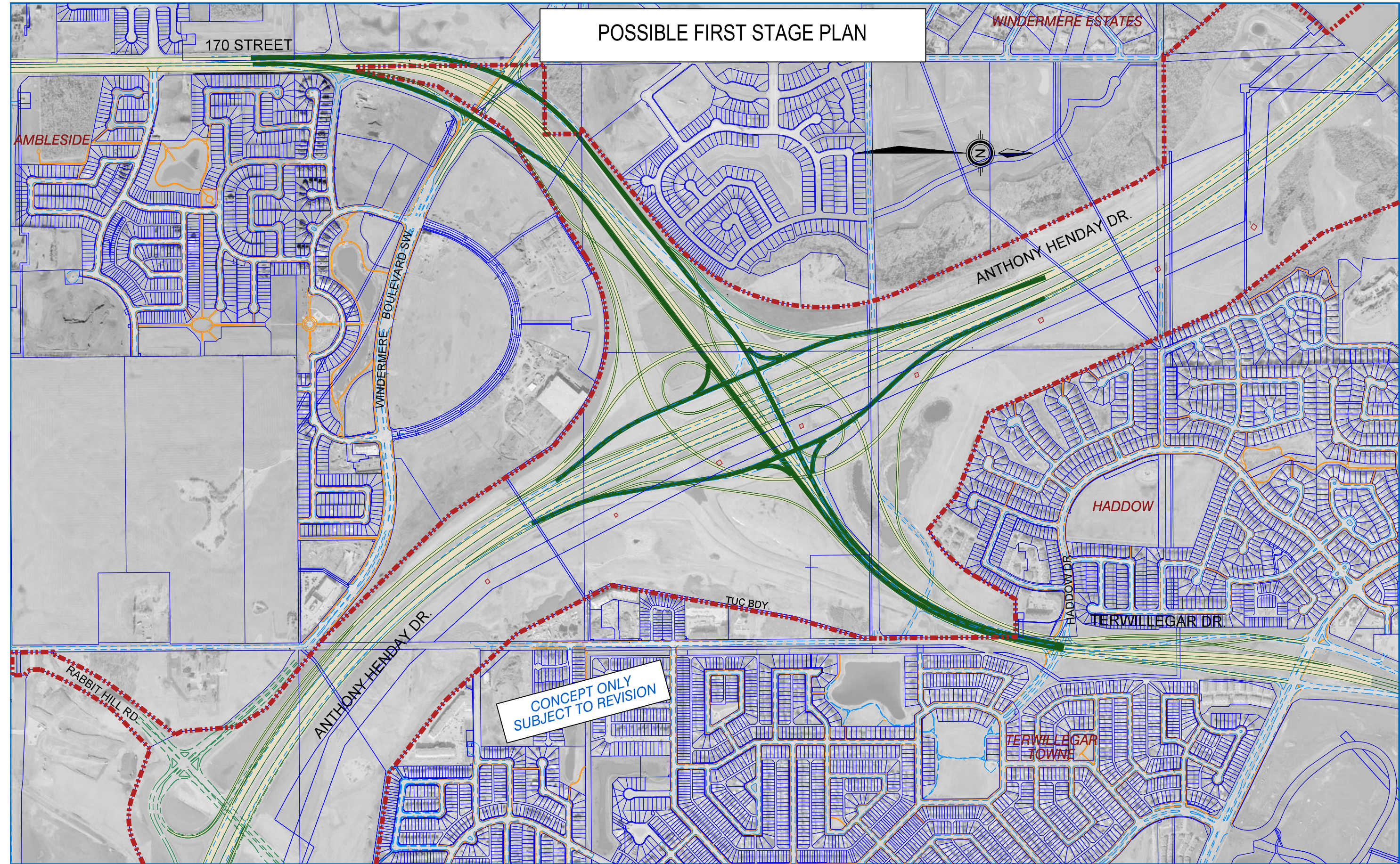
Drawn By: B. STATOR
Checked By: C. BROWN
Date: October 2010

PLAN NO.
S170 XX XX1 - 2



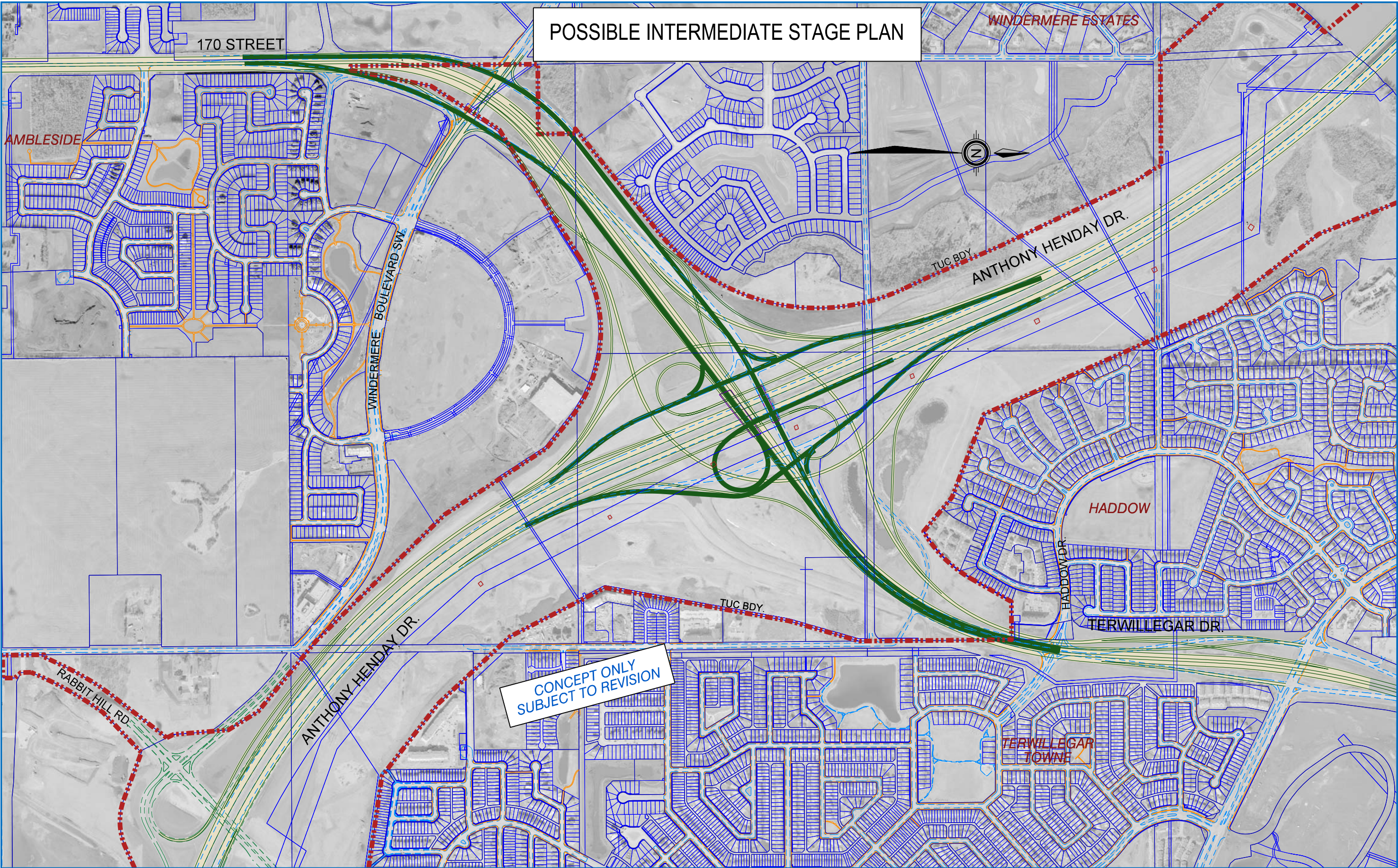
Manager, Transportation Planning Branch
Director, Development & Capital Planning
Director, Strategic Planning
Director, Roadways Design
General Supervisor, Strategic Planning

CONCEPT PLAN - SUBJECT TO PRELIMINARY DESIGN			
PROJECT: 170 STREET - CONCEPT PLANNING STUDY			
170 STREET/ANTHONY HENDAY DRIVE INTERCHANGE			
OPTION B-3 LONG TERM PLAN			
THE CITY OF Edmonton TRANSPORTATION	DRAWN BY: B. STAPOR DATE: November, 2010	PLAN NO. S170 XX XX1	



		<div><div><div>ISL</div><div>Engineering and Land Services</div></div><div><div>AL-TERRA</div><div>ENGINEERING</div></div></div>		<div><div>Manager, Transportation Planning Branch</div><div>Director, Development & Capital Planning</div><div>Director, Strategic Planning</div><div>Director, Roadways Design</div><div>General Supervisor, Strategic Planning</div></div>		<div>CONCEPT PLAN - SUBJECT TO PRELIMINARY DESIGN</div> <div>PROJECT: <div>170 STREET - CONCEPT PLANNING STUDY</div><div>170 STREET/ANTHONY HENDAY DRIVE INTERCHANGE OPTION B-3 - FIRST STAGE</div></div>			
<div><div>SCALE</div><div><div>050100200</div><div>HORIZONTAL</div></div></div>				<div><div><div>THE CITY OF</div><div>Edmonton</div></div>TRANSPORTATION</div>		<div><div>DRAWN BY: DATE</div><div>B. STAPOR November, 2010</div></div>		<div><div>PLAN NO.</div><div>S170 XX XX1</div></div>	

POSSIBLE INTERMEDIATE STAGE PLAN



ISL Engineering
and Land Services

AL-TERRA
ENGINEERING

Manager, Transportation Planning Branch
Director, Development & Capital Planning
Director, Strategic Planning
Director, Roadways Design
General Supervisor, Strategic Planning

CONCEPT PLAN - SUBJECT TO PRELIMINARY DESIGN			
PROJECT: 170 STREET - CONCEPT PLANNING STUDY			
170 STREET/ANTHONY HENDAY DRIVE INTERCHANGE OPTION B-3 - INTERMEDIATE STAGE			
THE CITY OF Edmonton TRANSPORTATION	DRAWN BY: C. BROOKS DATE:	B. STAPOR November, 2010	PLAN NO. S170 XX XX2

