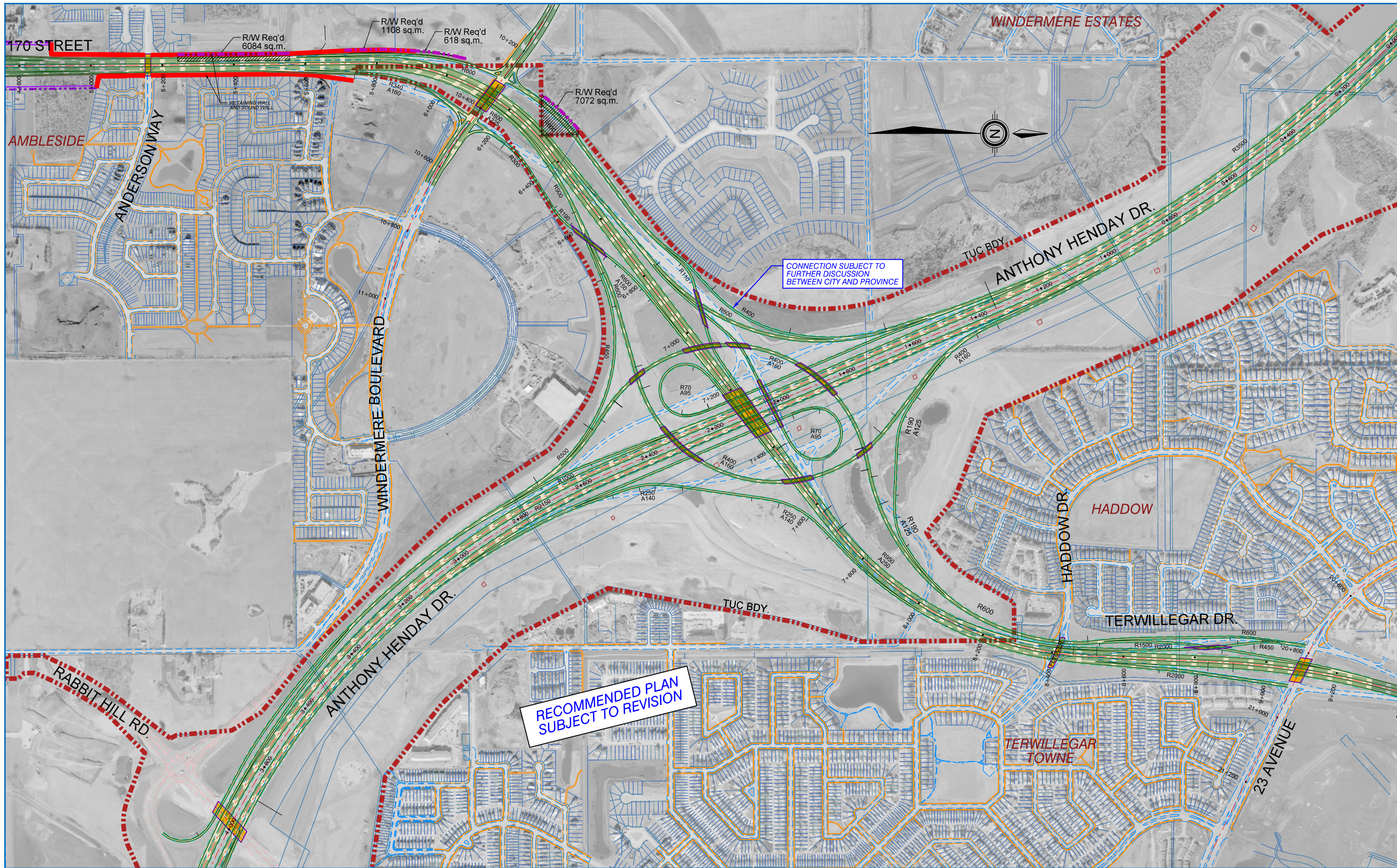


Manager, Transportation Planning Branch
Director, Development & Capital Planning
Director, Strategic Planning
Director, Roadways Design
General Supervisor, Strategic Planning

PROJECT:
170 STREET - CONCEPT PLANNING STUDY
170 STREET/ANTHONY HENDAY DRIVE INTERCHANGE
INTERMEDIATE STAGE PLAN

CONCEPT PLAN - SUBJECT TO PRELIMINARY DESIGN	
PROJECT:	
170 STREET - CONCEPT PLANNING STUDY	
170 STREET/ANTHONY HENDAY DRIVE INTERCHANGE	
INTERMEDIATE STAGE PLAN	
DRAWN BY: B. STAPOR	PLAN NO. S170 XX XX1
CHECKED BY: C. BRICKS	
DATE: March, 2010	



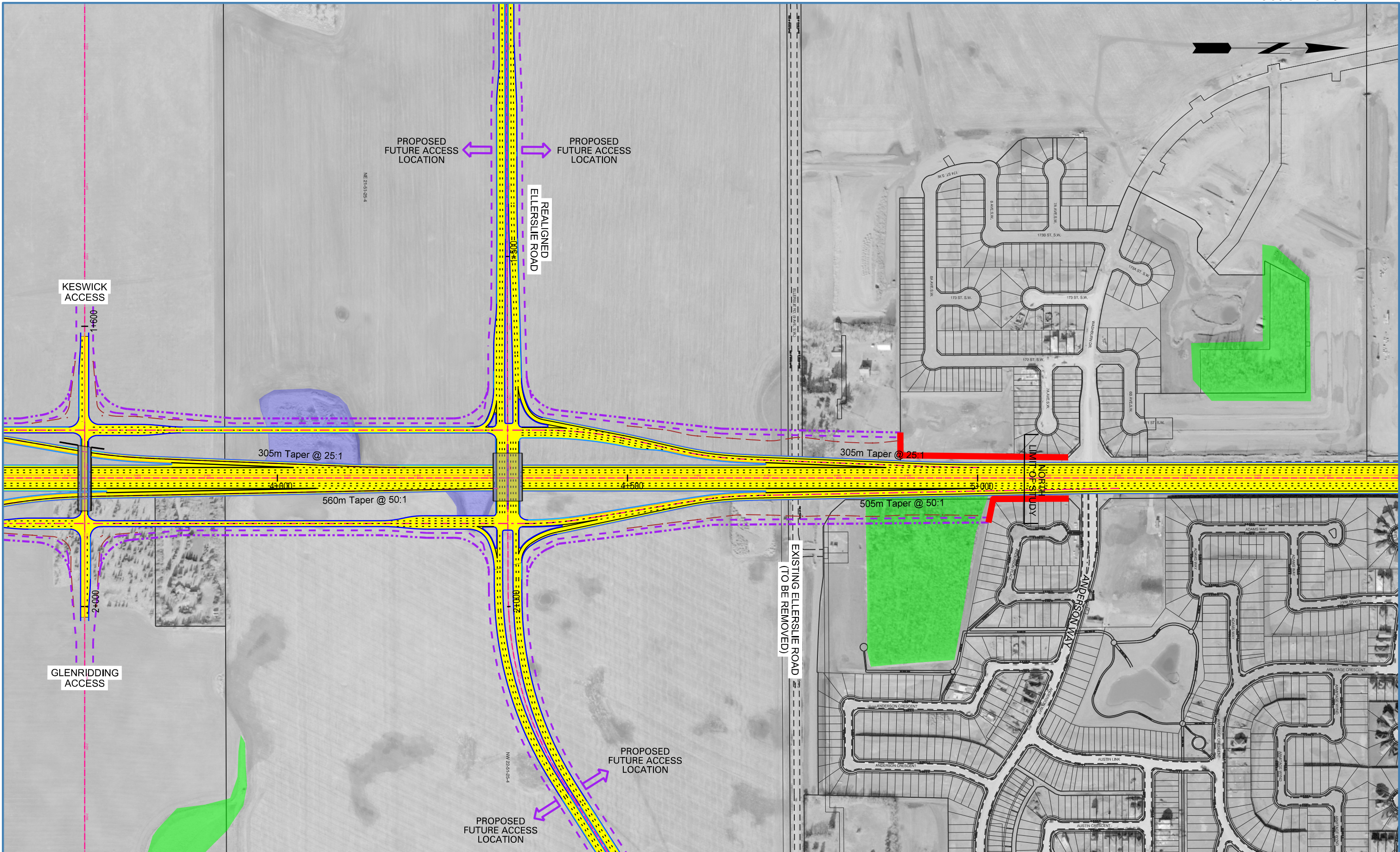
<p>SCALE</p> <p>HORIZONTAL</p>	
--------------------------------	--

<p>ISL Engineering and Land Services</p> <p>AL-TERRA ENGINEERING</p>	
--	--

<p>Manager, Transportation Planning Branch</p> <p>Director, Development & Capital Planning</p> <p>Director, Strategic Planning</p> <p>Director, Roadways Design</p> <p>General Supervisor, Strategic Planning</p>

<p>PROJECT:</p> <p>170 STREET - CONCEPT PLANNING STUDY</p> <p>170 STREET/ANTHONY HENDAY DRIVE INTERCHANGE</p> <p>RECOMMENDED LONG TERM PLAN</p>
--

<p>CONCEPT PLAN - SUBJECT TO PRELIMINARY DESIGN</p>	
<p>PROJECT:</p> <p>170 STREET - CONCEPT PLANNING STUDY</p> <p>170 STREET/ANTHONY HENDAY DRIVE INTERCHANGE</p> <p>RECOMMENDED LONG TERM PLAN</p>	
<p>Edmonton TRANSPORTATION</p>	<p>DRAWN BY: B. STAPOR</p> <p>DRAIN BY: C. BROOKS</p> <p>DATE: November, 2015</p>
<p>PLAN NO.</p> <p>S170 XX XX1</p>	



LEGEND


-  COMMUNICATION TOWERS
-  EXISTING NATURAL AREA
-  SEASONAL WETLAND
-  PROPOSED PROPERTY LINE WITH NOISE WALL
-  PROPOSED PROPERTY LINE WITH BERM
-  CUT/FILL LIMITS
-  RETAINING WALL



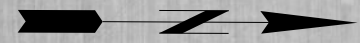
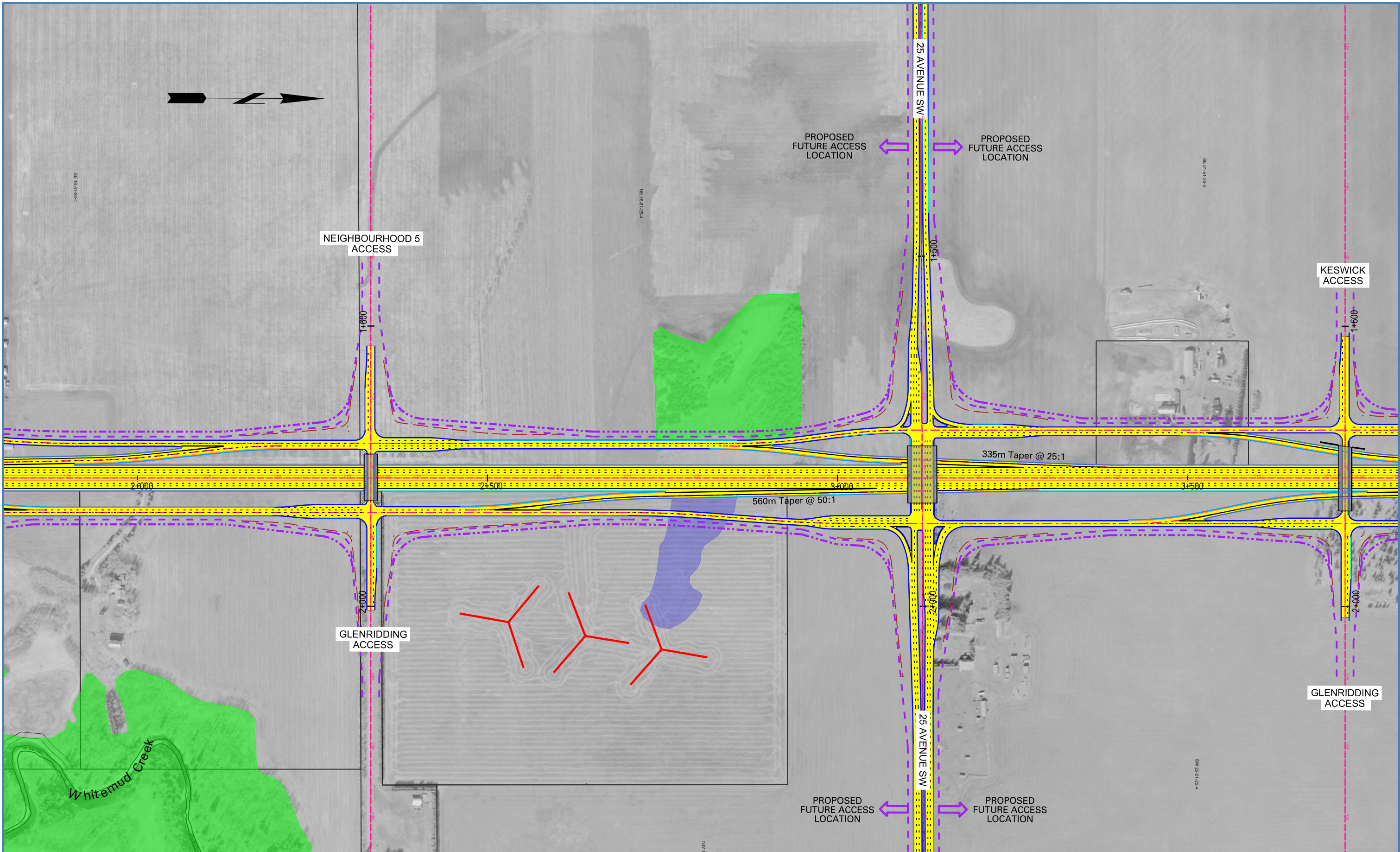
- Manager, Transportation Planning Branch
- Director, Development & Capital Planning
- Director, Strategic Planning
- Director, Roadways Design
- Contract Supervisor, Strategic Planning

CONCEPT PLAN - SUBJECT TO PRELIMINARY DESIGN

170 STREET
Plan and Profile
Ellerslie Road

 TRANSPORTATION	DRAWN BY: MT	PLAN NO.
	DATE: March 2011	S170 00 L02
SCALE: 1:5000		

...Plan Location (Ellerslie Road).dgn
 Mar/11/11
 2:39:27 PM
 _blank.tbl



LEGEND

-  COMMUNICATION TOWERS
-  EXISTING NATURAL AREA
-  SEASONAL WETLAND
-  PROPOSED PROPERTY LINE WITH NOISE WALL
-  PROPOSED PROPERTY LINE WITH BERM
-  CUT/FILL LIMITS
-  RETAINING WALL

ISL Engineering
and Land Services

AL-TERRA
ENGINEERING

Manager, Transportation Planning Branch
 Director, Development & Capital Planning
 Director, Strategic Planning
 Director, Roadways Design
 General Supervisor, Strategic Planning

CONCEPT PLAN - SUBJECT TO PRELIMINARY DESIGN

PROJECT: **170 STREET**
Plan and Profile
25 Avenue SW

Edmonton TRANSPORTATION

DATE: March 2011
SCALE: 1:5000

PLAN NO. **S170 00 L02**

...Plan Location (25 Ave).dgn
 Mar/11/11
 9:40:34 AM
 _blank.tbl



PROPOSED FUTURE ACCESS LOCATION

LEDUC COUNTY

CITY OF EDMONTON

NEIGHBOURHOOD 5 ACCESS

Rabbit Hill Baptist Cemetery

375m Taper @ 50:1

560m Taper @ 50:1

333m Taper @ 25:1

335m Taper @ 25:1

LEDUC COUNTY

CITY OF EDMONTON

GLENRIDDING ACCESS

ALIGNMENT SUBJECT TO CHANGE SOUTH OF 41 AVENUE SW

INTERCHANGE DESIGN TO MATCH 41 AVENUE SW CONCEPT PLANNING STUDY DRAWING NUMBER A041-0902 (BY OTHERS)

Whitemud Creek

41 AVENUE SW

LEGEND

-  COMMUNICATION TOWERS
-  EXISTING NATURAL AREA
-  SEASONAL WETLAND
-  PROPOSED PROPERTY LINE WITH NOISE WALL
-  PROPOSED PROPERTY LINE WITH BERM
-  CUT/FILL LIMITS
-  RETAINING WALL



Manager, Transportation Planning Branch
 Director, Development & Capital Planning
 Director, Strategic Planning
 Director, Roadways Design
 General Supervisor, Strategic Planning

CONCEPT PLAN - SUBJECT TO PRELIMINARY DESIGN

PROJECT: **170 STREET**
 Plan and Profile
 41 Avenue SW

Edmonton TRANSPORTATION

DATE: March 2011
 SCALE: 1:5000

PLAN NO. **S170 00 L02**

...Plan Location (41 Ave SW).dgn Mar/15/11 1:40:49 PM