



102 AVENUE OVER GROAT ROAD BRIDGE REPLACEMENT PROJECT

MARCH 2015



Ready to pour bridge pilings

The 102 Avenue over Groat Road Bridge has reached the end of its service life and needs to be replaced. The old bridge closed in July 2014 for construction of a replacement bridge. The new bridge is expected to open to traffic in fall 2015.

CONSTRUCTION

Crews spent the fall months building bridge abutments and concrete pilings at the top of the Groat Ravine. These will support the new bridge. Crews poured 20 pilings on each side (40 in total).

side of the ravine to temporarily support the bridge girders once they are installed.

GIRDER WORK

Girder installation begins March 9 with cranes lifting them out from the east and west sides of the ravine. The central girders will then be lifted into place by a crane situated on Groat Road.

There will be seven girder lines in total. Each girder is three pieces bolted together to create a one-piece girder. These will then be tied into the bridge abutments.

Once the girders are erected, the foundations for the shoring towers will be removed and overhead protection scaffolding put in place to make the area safe for drivers,

pedestrians and cyclists travelling below.

Crews will then begin placing steel rebar and doing form work for bridge deck concrete pours.

GROAT ROAD CLOSURE

On March 13 at 7:30 p.m., Groat Road from 107 Street to River Valley Road will close for bridge girder work. The work is anticipated to be completed over the weekend.

Motorists are advised to detour using Victoria Park Road, 149 Street to Whitemud Drive, or 109 Street to the High Level Bridge.

ETS Route 128 will detour during the closure to Victoria Park Road, 116 Street and 107 Avenue. Extra service will be added on Saturday, March 14 to make up for the bus delay.



A piling cap completes piling work on the east side

PARKING CHANGES

Starting **March 2**, the south side of Stony Plain Road west of 124 Street is a 'No Stopping' zone between 6 a.m. and 6 p.m. weekdays. Parking meters will be available to access area businesses after 6 p.m. and all day on weekends.

Full details and maps of road detours and parking bans are available on the project website.

GROAT ROAD SHARED-USE PATH

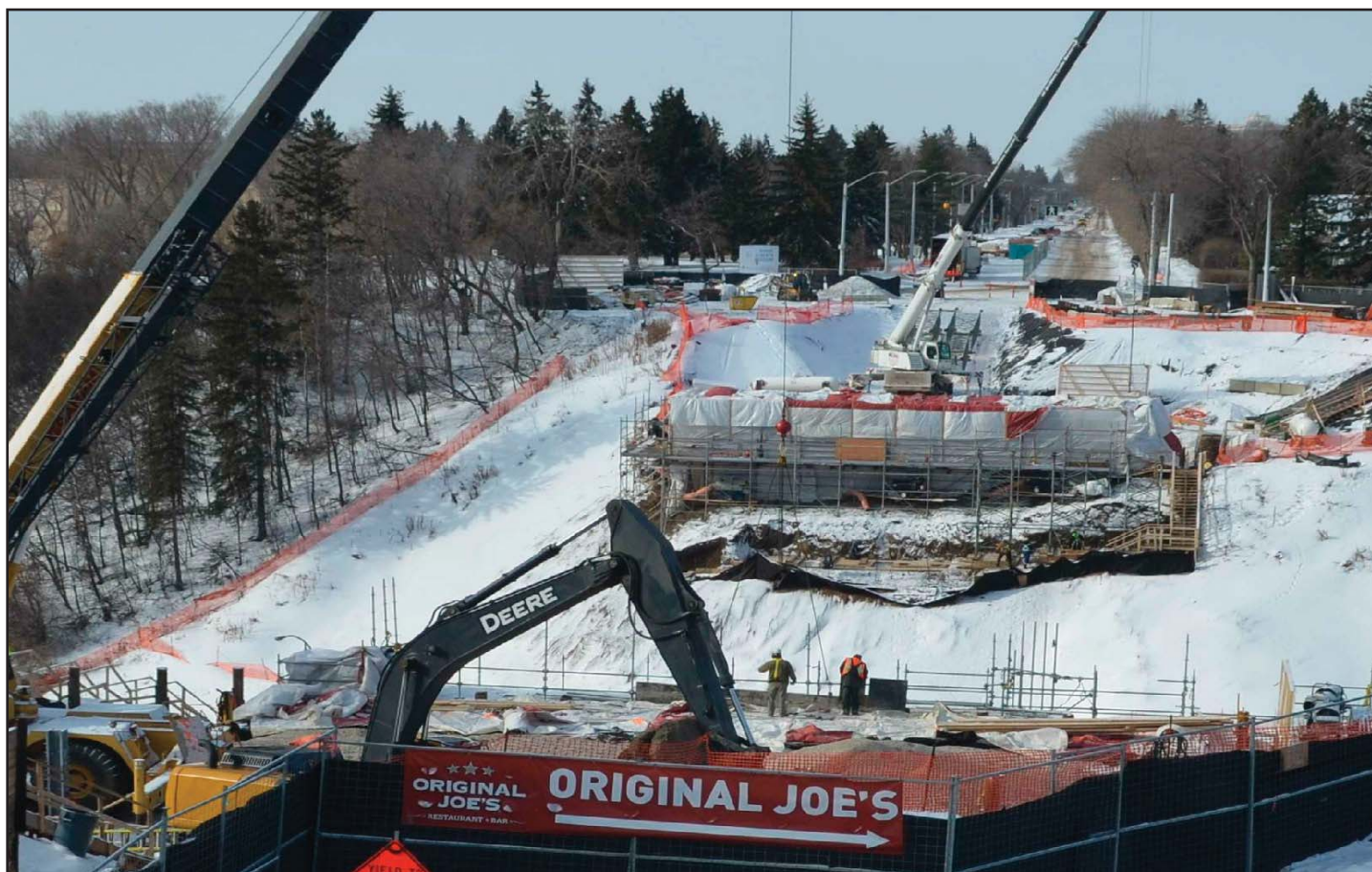
The shared-use path along Groat Road from 107 Avenue to River Valley Road closed on **February 18** for eight weeks. The closure is to accommodate upcoming girder work on the bridge.

CONSTRUCTION WEBCAMS

The project has two live webcams on 102 Avenue and along Groat Road for the duration of construction. Check out the construction progress live on the project webpage.

CONSTRUCTION TIMELINE

2013-14	<u>Completed</u> <ul style="list-style-type: none">• Drainage upgrades• Tree clearing• Water main replacement• Soil nail installation• Bridge closed July 1• Bridge demolition• Paving of Groat Road• Bridge pilings• Shoring of Wellington Bridge• Bridge abutment
2015	<ul style="list-style-type: none">• Erection of girders• Bridge deck• Paving and road tie-ins• Opening of new bridge in fall



Bridge abutment and shoring