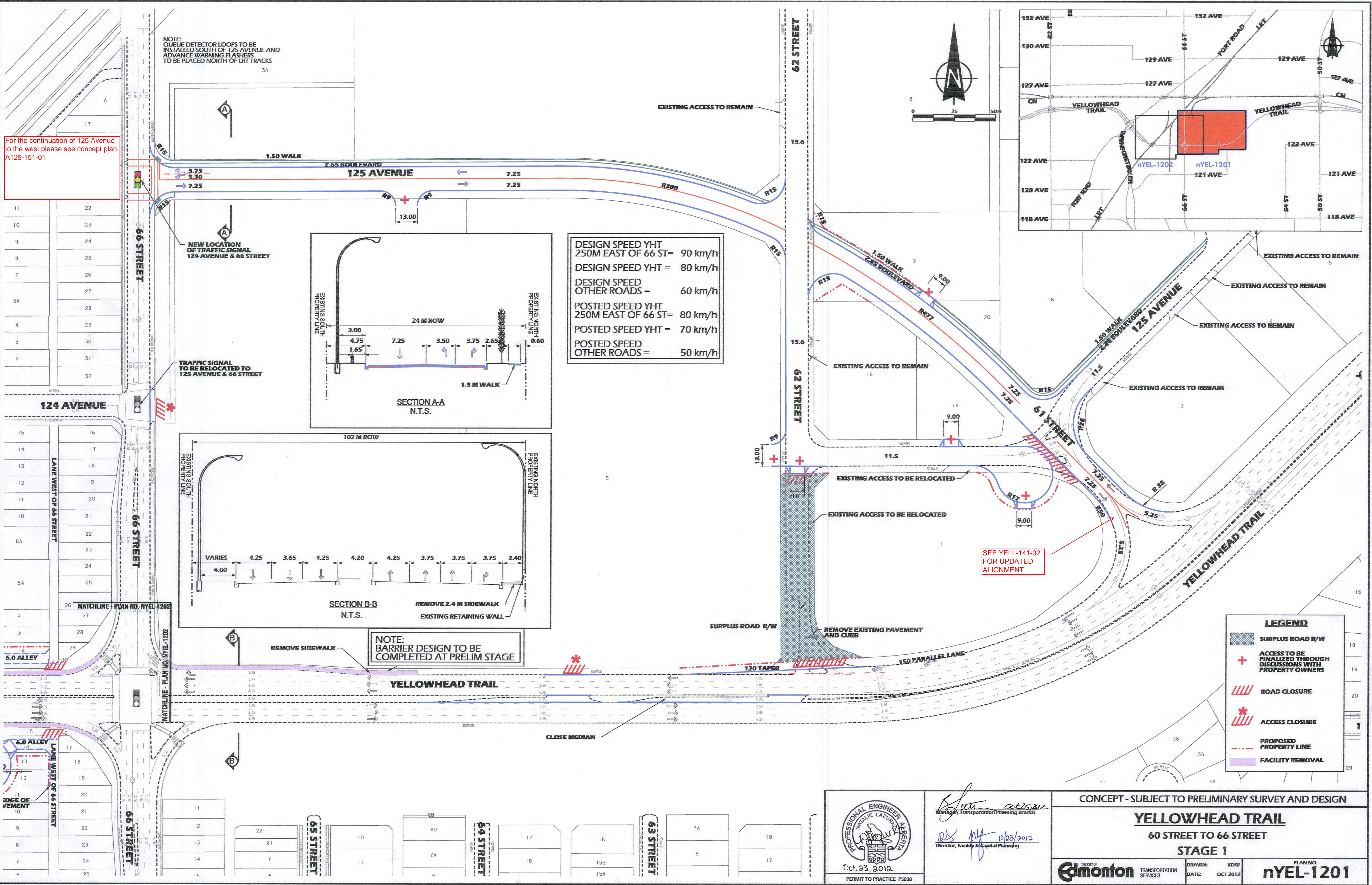
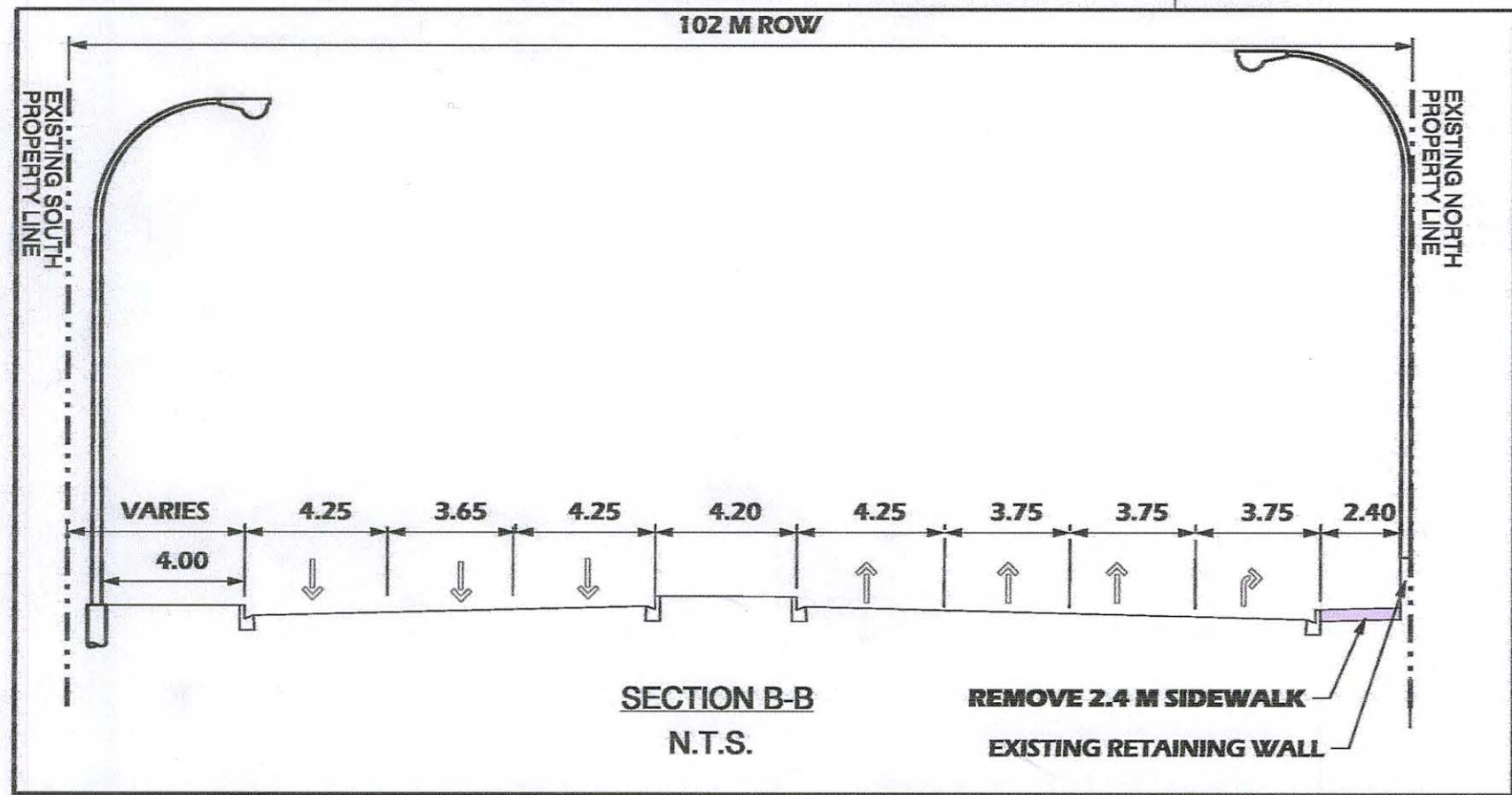
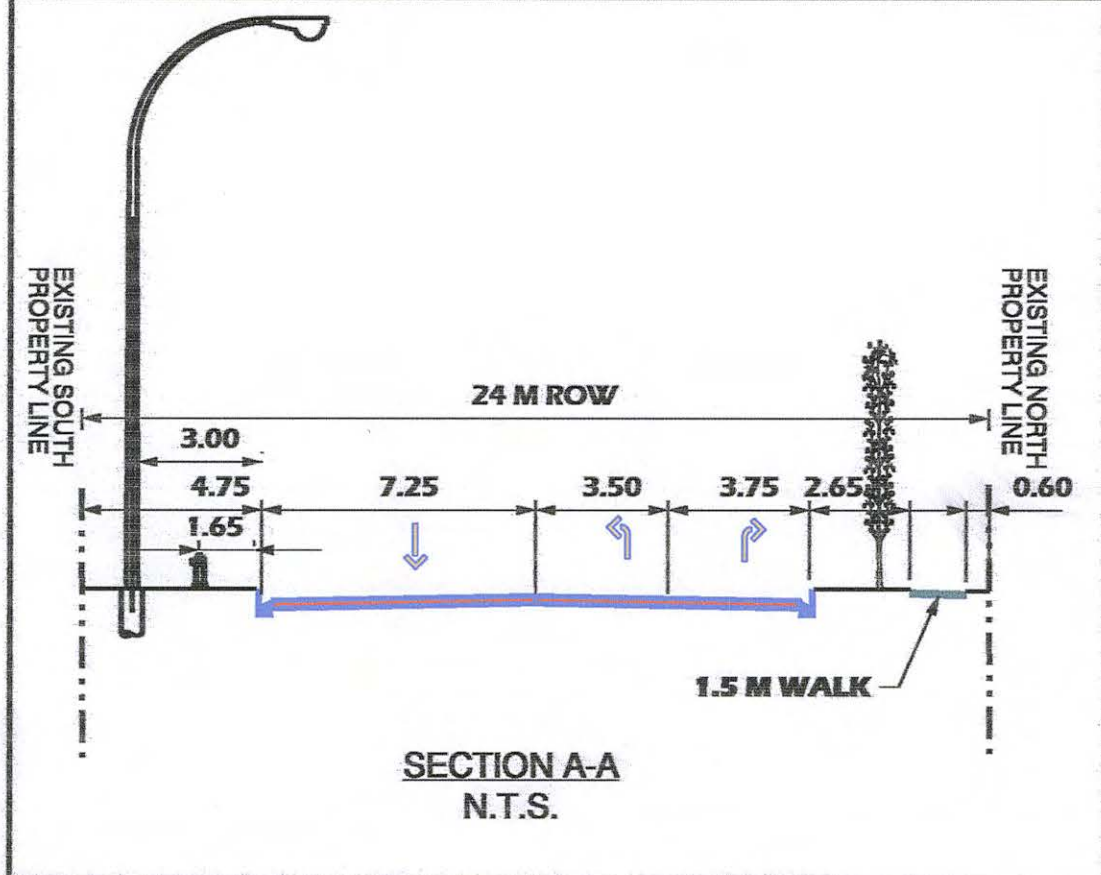


For the continuation of 125 Avenue to the west please see concept plan A125-151-01

NOTE: QUEUE DETECTOR LOOPS TO BE INSTALLED SOUTH OF 125 AVENUE AND ADVANCE WARNING FLASHERS TO BE PLACED NORTH OF LRT TRACKS



DESIGN SPEED YHT  
 250M EAST OF 66 ST = 90 km/h  
 DESIGN SPEED YHT = 80 km/h  
 DESIGN SPEED OTHER ROADS = 60 km/h  
 POSTED SPEED YHT  
 250M EAST OF 66 ST = 80 km/h  
 POSTED SPEED OTHER ROADS = 50 km/h

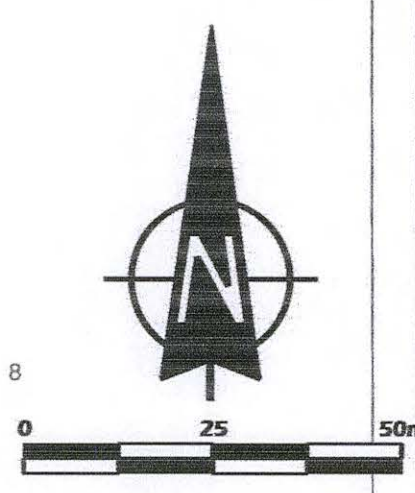
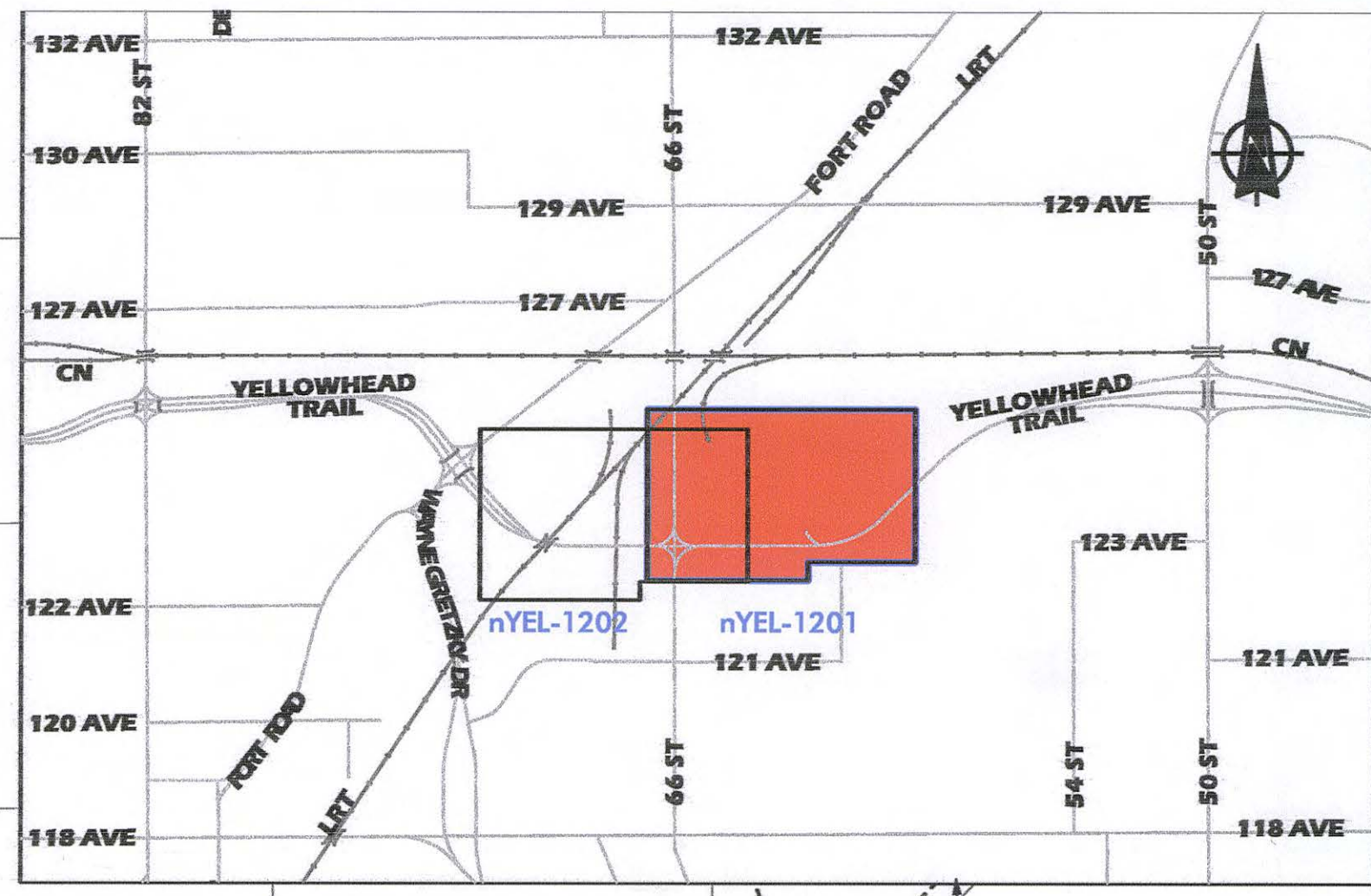
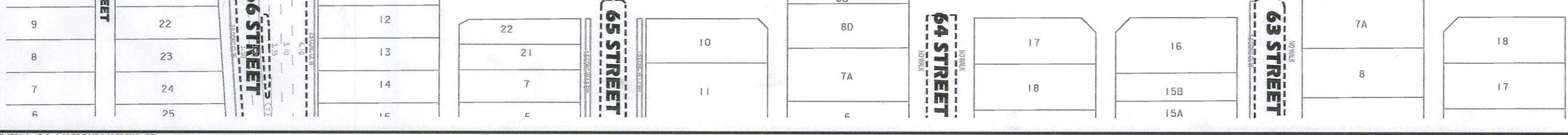


NOTE: BARRIER DESIGN TO BE COMPLETED AT PRELIM STAGE

MATCHLINE - PLAN NO. NYEL-1202

MATCHLINE - PLAN NO. NYEL-1202

EDGE OF VERMENT



**LEGEND**

- SURPLUS ROAD R/W
- ACCESS TO BE FINALIZED THROUGH DISCUSSIONS WITH PROPERTY OWNERS
- ROAD CLOSURE
- ACCESS CLOSURE
- PROPOSED PROPERTY LINE
- FACILITY REMOVAL

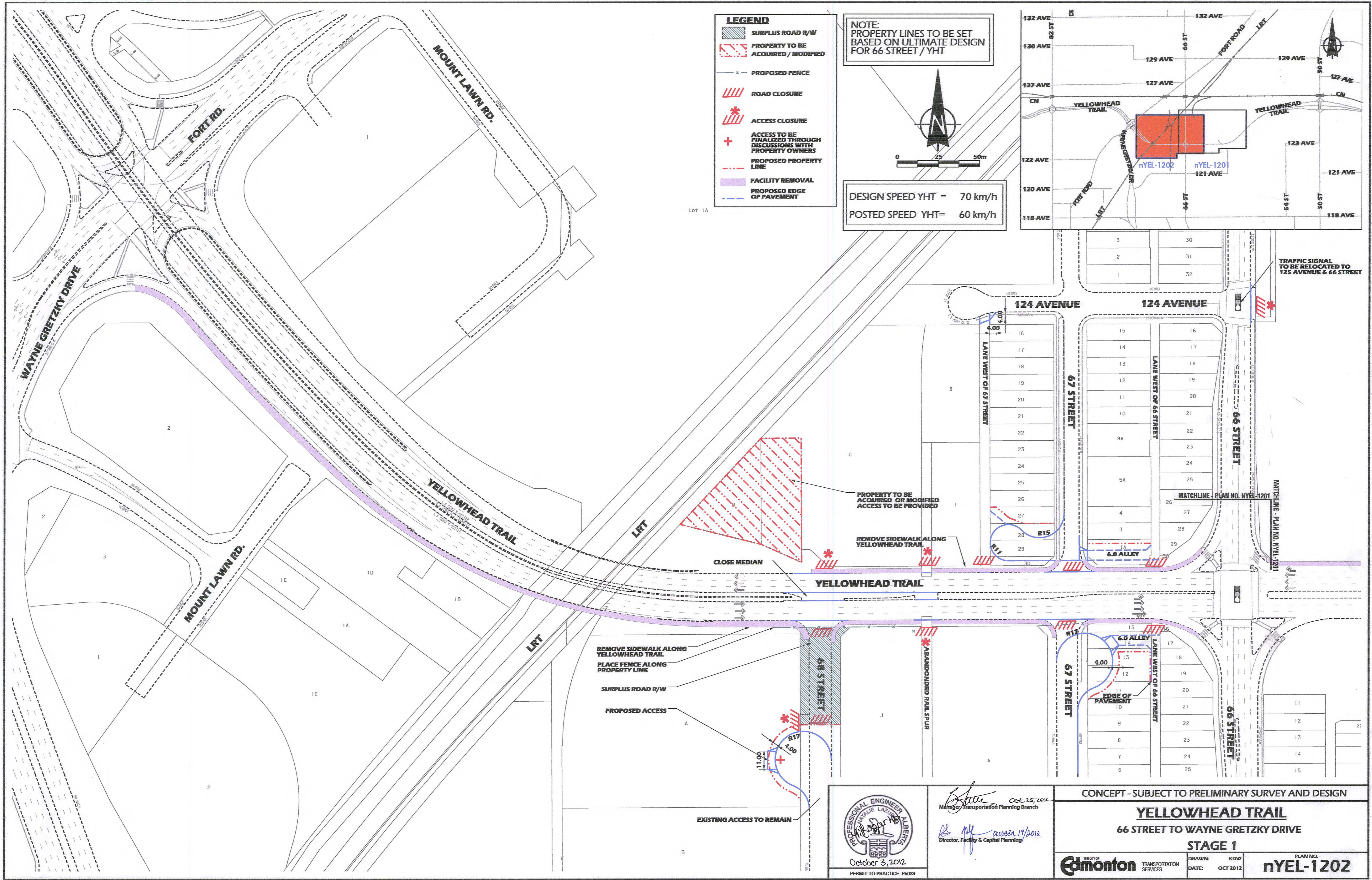
PROFESSIONAL ENGINEER  
 ANNE LAZURKIN  
 10/23/2012  
 Director, Facility & Capital Planning

CONCEPT - SUBJECT TO PRELIMINARY SURVEY AND DESIGN

**YELLOWHEAD TRAIL**  
 60 STREET TO 66 STREET  
 STAGE 1

City of Edmonton TRANSPORTATION SERVICES  
 DRAWN: KDW  
 DATE: OCT 2012  
 PLAN NO. NYEL-1201

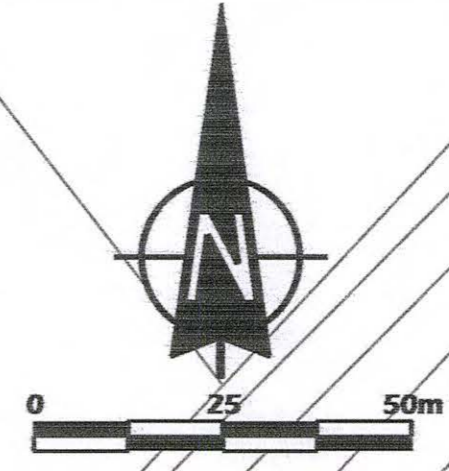
NYEL-1201.dgn Default: 10/23/2012 1:09:52 PM by PCP



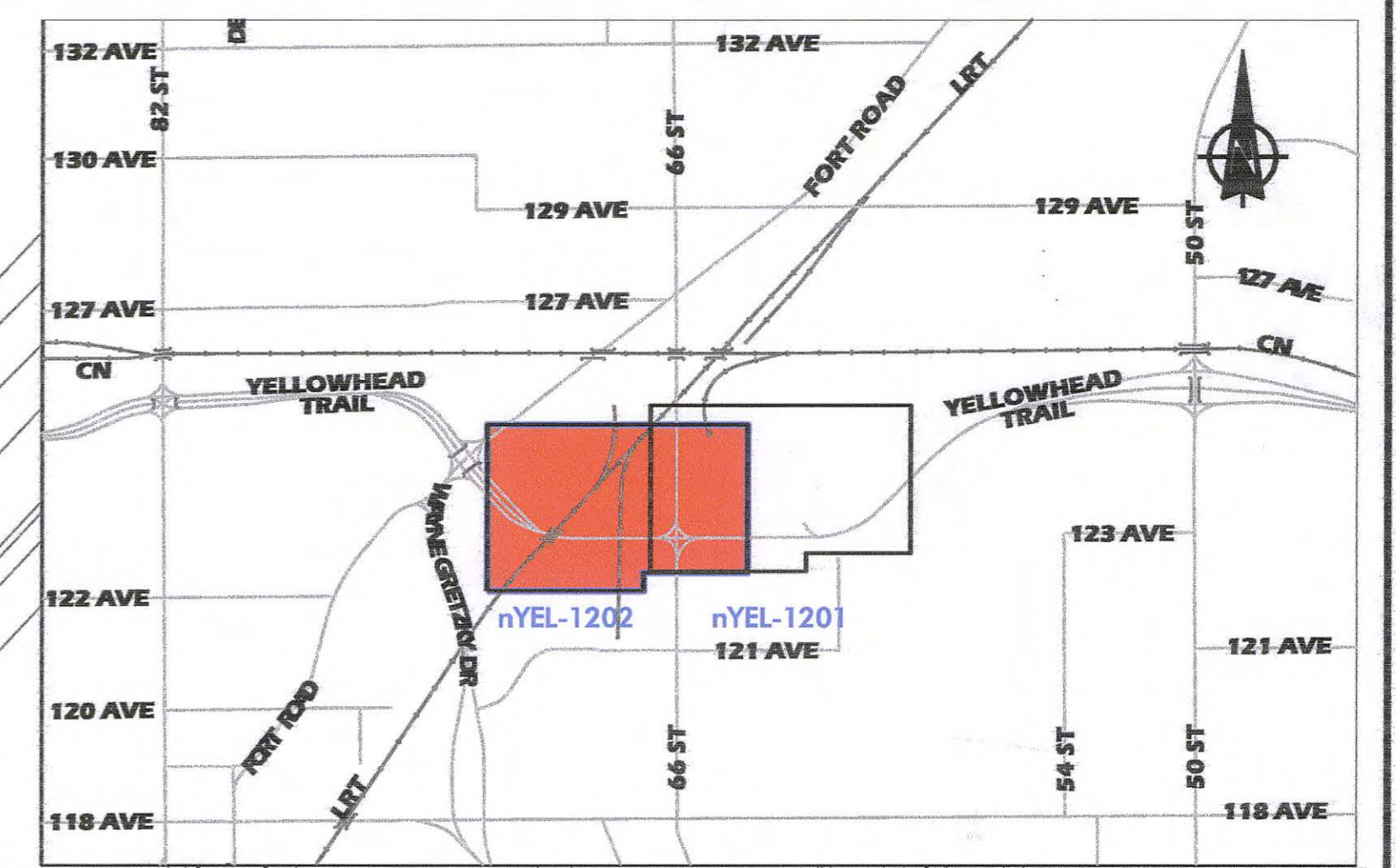
**LEGEND**

- SURPLUS ROAD R/W
- PROPERTY TO BE ACQUIRED / MODIFIED
- PROPOSED FENCE
- ROAD CLOSURE
- ACCESS CLOSURE
- ACCESS TO BE FINALIZED THROUGH DISCUSSIONS WITH PROPERTY OWNERS
- PROPOSED PROPERTY LINE
- FACILITY REMOVAL
- PROPOSED EDGE OF PAVEMENT

NOTE: PROPERTY LINES TO BE SET BASED ON ULTIMATE DESIGN FOR 66 STREET / YHT



DESIGN SPEED YHT = 70 km/h  
POSTED SPEED YHT = 60 km/h



TRAFFIC SIGNAL TO BE RELOCATED TO 125 AVENUE & 66 STREET

REMOVE SIDEWALK ALONG YELLOWHEAD TRAIL  
PLACE FENCE ALONG PROPERTY LINE  
SURPLUS ROAD R/W  
PROPOSED ACCESS  
EXISTING ACCESS TO REMAIN

PROFESSIONAL ENGINEER  
ALBERTA  
October 3, 2012  
PERMIT TO PRACTICE P5038

*[Signature]* Oct 25, 2012  
Manager, Transportation Planning Branch  
*[Signature]* October 19, 2012  
Director, Facility & Capital Planning

CONCEPT - SUBJECT TO PRELIMINARY SURVEY AND DESIGN

**YELLOWHEAD TRAIL**  
66 STREET TO WAYNE GRETZKY DRIVE

**STAGE 1**

**City of Edmonton** TRANSPORTATION SERVICES  
DRAWN: KDW  
DATE: OCT 2012

PLAN NO. **nYEL-1202**