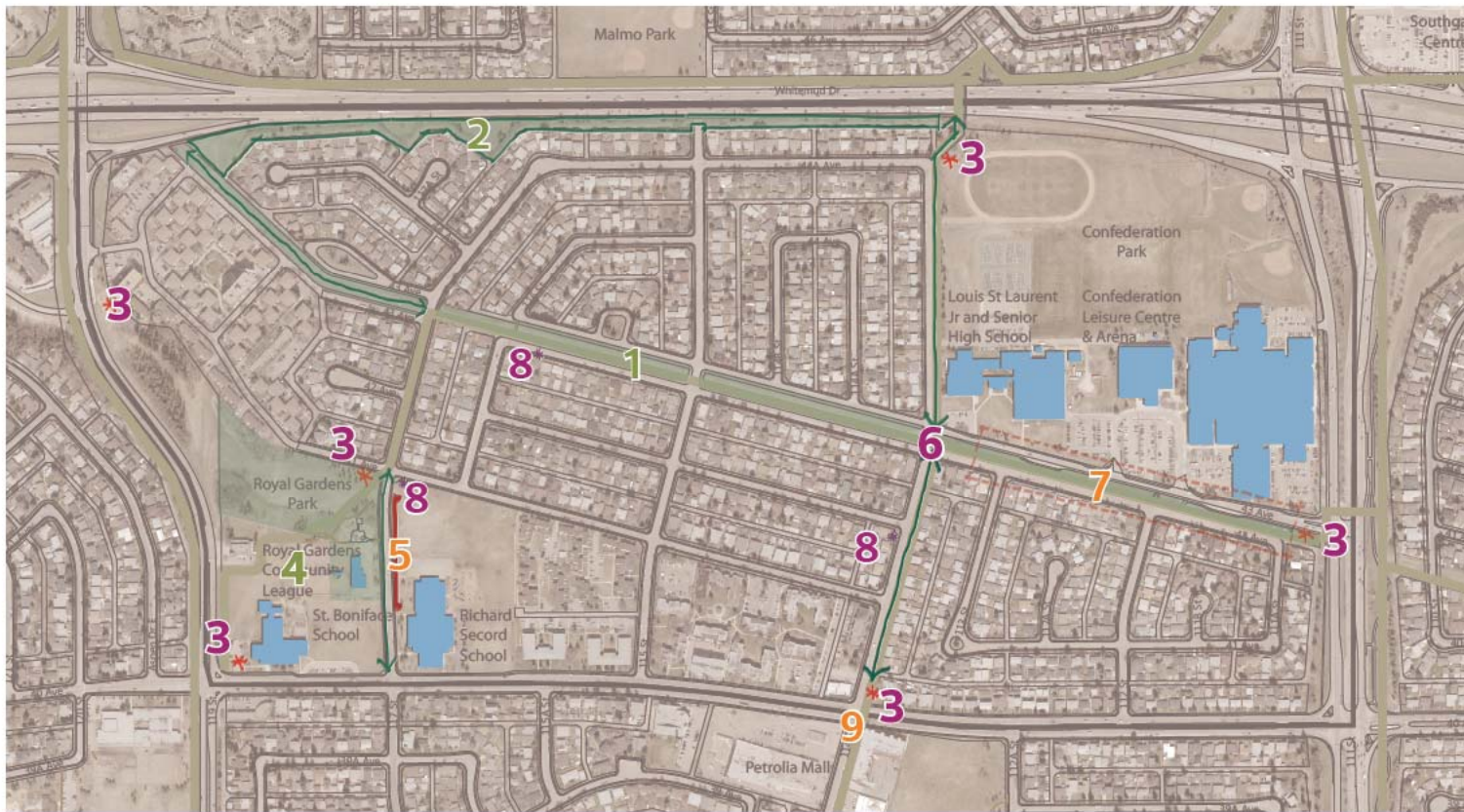


# Urban Design Framework



**LEGEND**

- Royal Gardens Neighbourhood Boundary
- Existing Bike Routes
- Key Destinations
- Enhanced Connections
- Wayfinding Signs
- Bus Stop Improvements

**Open Space**  
**Connectivity & Corridors**  
**Traffic**

**Focus Area 1**  
Pipeline Corridor Improvements

**Focus Area 4**  
Royal Gardens Park Improvements

**Focus Area 7**  
Harry Ainlay & Louis St. Laurent  
Traffic Improvements

**Focus Area 2**  
Pocket Park Improvements

**Focus Area 5**  
Richard Secord Traffic  
Improvements

**Focus Area 8**  
Bus Stop Improvements

**Focus Area 3**  
Wayfinding Signage

**Focus Area 6**  
114 Street Enhanced Pedestrian &  
Cyclist Connection (40 Ave to 44A  
Ave)

**Focus Area 9**  
Intersection of 40 Ave and 114 St

**SHARE YOUR VOICE**  
**SHAPE OUR CITY**



# Urban Design Themes

The following **Urban Design Themes** were developed based on the feedback from the Community Walk and Ideas Workshop and Survey. The themes represent the various aspects of urban design that could be incorporated into the renewal process.

## Open Space



Opportunities were identified to better use various park spaces and pocket parks throughout the neighbourhood.

## Connectivity & Corridors



Opportunities related to pedestrian accessibility, sidewalk curb cuts, trail connections, and pedestrian crossings were identified.

## Placemaking



Opportunities were identified to express the artistic talent of the community through various placemaking interventions. Placemaking opportunities were incorporated into the focus areas.

## Traffic



Opportunities for traffic improvements in the neighbourhood were identified by community members.

## Safety



Community members identified issues relating to safety concerns and perceptions within the neighbourhood. Safety concerns were incorporated into the focus areas.

## Lighting



A common lighting issue identified was the lack of sidewalk lighting in residential and park areas. Lighting concerns were incorporated into the focus areas.

**Do the Urban Design Themes align with your Vision and Values for Royal Gardens?**

Use the **post-it notes** to leave your comments here.

**SHARE YOUR VOICE**  
**SHAPE OUR CITY**

Edmonton

# Open Space

Please place a sticker where you feel attention to Open Space is most needed in the community.



## What are types of Open Spaces?

Open spaces within a community serve multiple purposes and age groups. The physical design of open spaces can enable active and passive activities. Some open spaces may function as playgrounds and organized sports fields while other open spaces may function as social relaxation and gathering areas.

## Why are Open Spaces important to Royal Gardens?

Royal Gardens benefits from various open spaces scattered throughout the neighbourhood. Types of open spaces within Royal Gardens range from large district and community/school parks, to pipeline corridor/green belts and smaller pocket parks. These parks provide venues for recreational and community activities. It is important that open spaces meet the needs of a community.

## Focus Areas – What We Heard

### 1 Focus Area 1: Pipeline Corridor Improvements



**What We Heard:** The open space is highly valued by the community. Improvements desired include trees, landscaping, seating areas, off-leash dog park amenities, lighting, public art, and pathways.

### 2 Focus Area 2: Pocket Park Improvements



**What We Heard:** Pocket parks are unknown by many community members and underutilized. Opportunities include improved park entrances and trimming of existing landscaping.

### 4 Focus Area 4: Royal Gardens Park Improvements



**What We Heard:** Opportunities include enhanced lighting and the addition of murals/art.

# Open Space

Please use stickers to indicate your level of comfort with each idea. Use a post-it note to write down which element you like/don't like and why.

## 1 Focus Area 1: Pipeline Corridor Improvements



Site-specific considerations: Improvements to the green space along the pipeline corridor are limited to types of work deemed technically possible near a pipeline. Collaborative efforts between the City and the pipeline company are required to identify what projects are possible.

Potential Elements	Benefits	Trade-offs
<b>Plantings</b>	<ul style="list-style-type: none"> <li>Increased shade within the green space</li> <li>Increased aesthetic and natural value to the neighbourhood</li> </ul>	<ul style="list-style-type: none"> <li>Additional maintenance considerations</li> </ul>
<b>Off-leash dog park amenities (signs, bags, garbage cans, and a possible fenced off area)</b>	<ul style="list-style-type: none"> <li>Enhanced off-leash dog use/experience</li> </ul>	<ul style="list-style-type: none"> <li>May impact other uses</li> <li>Increased pedestrian traffic in the area at all times of day</li> </ul>
<b>Seating areas/meeting pads</b>	<ul style="list-style-type: none"> <li>Resting areas for pedestrians</li> <li>Creation of social meeting and gathering areas</li> </ul>	<ul style="list-style-type: none"> <li>Increased pedestrian traffic in the area at all times of day</li> <li>Possible vandalism of park furniture</li> </ul>
<b>Public Art</b>	<ul style="list-style-type: none"> <li>Showcase local artist talent</li> <li>Expression of community identity</li> <li>Creation of unique public places</li> </ul>	<ul style="list-style-type: none"> <li>Possible vandalism</li> <li>Additional maintenance considerations</li> </ul>
<b>Pathway extension from 117 Street towards 122 Street</b>	<ul style="list-style-type: none"> <li>Enhanced pedestrian accessibility and cyclist connectivity</li> </ul>	<ul style="list-style-type: none"> <li>Loss of grass for a pathway</li> </ul>
<b>Lighting Improvements</b>	<ul style="list-style-type: none"> <li>Enhanced pedestrian and cyclist experience</li> <li>Increased pedestrian and cyclist safety</li> </ul>	<ul style="list-style-type: none"> <li>Possible light pollution</li> <li>Increased pedestrian traffic in the area at all times of day</li> </ul>

What is your overall level of comfort?

1 2 3 4 5 >

(1 is the lowest level of comfort, 5 is the highest)

What do you like/don't like about the potential elements?

Add your comments here

## 2 Focus Area 2: Pocket Park Improvements



Site-specific considerations: Only accessible by alley.

Potential Elements	Benefits	Trade-offs
<b>Access Improvements</b>	<ul style="list-style-type: none"> <li>Improved pedestrian access into pocket parks</li> <li>Enhanced visibility into pocket parks</li> </ul>	<ul style="list-style-type: none"> <li>Increased pedestrian traffic in the area at all times of day</li> </ul>
<b>Landscaping Improvements (trimming landscaping to improve visibility)</b>	<ul style="list-style-type: none"> <li>Enhanced visibility into pocket parks</li> <li>Increased pedestrian safety</li> </ul>	<ul style="list-style-type: none"> <li>Additional maintenance considerations</li> <li>Decrease in natural feel</li> </ul>
<b>Lighting Improvements</b>	<ul style="list-style-type: none"> <li>Enhanced pedestrian and cyclist experience</li> <li>Increased pedestrian and cyclist safety</li> </ul>	<ul style="list-style-type: none"> <li>Possible light pollution</li> <li>Increased pedestrian traffic in the area at all times of day</li> </ul>

1 2 3 4 5 >

Add your comments here

## 4 Focus Area 4: Royal Gardens Park Improvements



Site-specific considerations: Collaboration between various community stakeholders.

Potential Elements	Benefits	Trade-offs
<b>Lighting Improvements</b>	<ul style="list-style-type: none"> <li>Increased pedestrian safety</li> </ul>	<ul style="list-style-type: none"> <li>Possible light pollution</li> <li>Increased pedestrian traffic in the area at all times of day</li> </ul>
<b>Murals/Art</b>	<ul style="list-style-type: none"> <li>Showcase local artist talent</li> <li>Expression of community identity</li> <li>Creation of unique public places</li> </ul>	<ul style="list-style-type: none"> <li>Possible vandalism</li> <li>Additional maintenance considerations</li> </ul>

1 2 3 4 5 >

Add your comments here

SHARE YOUR VOICE  
SHAPE OUR CITY



# Open Space

Please use stickers to indicate your level of comfort with each idea. Use a post-it note to write down which element you like/don't like and why.

## 1 Focus Area 1: Pipeline Corridor Improvements



Site-specific considerations: Improvements to the green space along the pipeline corridor are limited to types of work deemed technically possible near a pipeline. Collaborative efforts between the City and the pipeline company are required to identify what projects are possible.

Potential Elements	Benefits	Trade-offs
<b>Plantings</b>	<ul style="list-style-type: none"> <li>Increased shade within the green space</li> <li>Increased aesthetic and natural value to the neighbourhood</li> </ul>	<ul style="list-style-type: none"> <li>Additional maintenance considerations</li> </ul>
<b>Off-leash dog park amenities (signs, bags, garbage cans, and a possible fenced off area)</b>	<ul style="list-style-type: none"> <li>Enhanced off-leash dog use/experience</li> </ul>	<ul style="list-style-type: none"> <li>May impact other uses</li> <li>Increased pedestrian traffic in the area at all times of day</li> </ul>
<b>Seating areas/meeting pads</b>	<ul style="list-style-type: none"> <li>Resting areas for pedestrians</li> <li>Creation of social meeting and gathering areas</li> </ul>	<ul style="list-style-type: none"> <li>Increased pedestrian traffic in the area at all times of day</li> <li>Possible vandalism of park furniture</li> </ul>
<b>Public Art</b>	<ul style="list-style-type: none"> <li>Showcase local artist talent</li> <li>Expression of community identity</li> <li>Creation of unique public places</li> </ul>	<ul style="list-style-type: none"> <li>Possible vandalism</li> <li>Additional maintenance considerations</li> </ul>
<b>Pathway extension from 117 Street towards 122 Street</b>	<ul style="list-style-type: none"> <li>Increased walking and biking opportunities</li> </ul>	<ul style="list-style-type: none"> <li>Loss of grass for a pathway</li> </ul>
<b>Lighting Improvements</b>	<ul style="list-style-type: none"> <li>Enhanced pedestrian and cyclist experience</li> <li>Increased pedestrian and cyclist safety</li> </ul>	<ul style="list-style-type: none"> <li>Possible light pollution</li> <li>Increased pedestrian traffic in the area at all times of day</li> </ul>

What is your overall level of comfort?

(1 is the lowest level of comfort, 5 is the highest)

What do you like/don't like about the potential elements?

## 2 Focus Area 2: Pocket Park Improvements



Site-specific considerations: Only accessible by alley.

Potential Elements	Benefits	Trade-offs
<b>Access Improvements</b>	<ul style="list-style-type: none"> <li>Improved pedestrian access into pocket parks</li> <li>Enhanced visibility into pocket parks</li> </ul>	<ul style="list-style-type: none"> <li>Increased pedestrian traffic in the area at all times of day</li> </ul>
<b>Landscaping Improvements (trimming landscaping to improve visibility)</b>	<ul style="list-style-type: none"> <li>Enhanced visibility into pocket parks</li> <li>Increased pedestrian safety</li> </ul>	<ul style="list-style-type: none"> <li>Additional maintenance considerations</li> <li>Decrease in natural feel</li> </ul>
<b>Lighting Improvements</b>	<ul style="list-style-type: none"> <li>Enhanced pedestrian and cyclist experience</li> <li>Increased pedestrian and cyclist safety</li> </ul>	<ul style="list-style-type: none"> <li>Possible light pollution</li> <li>Increased pedestrian traffic in the area at all times of day</li> </ul>

## 4 Focus Area 4: Royal Gardens Park Improvements



Site-specific considerations: Collaboration between various community stakeholders.

Potential Elements	Benefits	Trade-offs
<b>Lighting Improvements</b>	<ul style="list-style-type: none"> <li>Increased pedestrian safety</li> </ul>	<ul style="list-style-type: none"> <li>Possible light pollution</li> <li>Increased pedestrian traffic in the area at all times of day</li> </ul>
<b>Murals/Art</b>	<ul style="list-style-type: none"> <li>Showcase local artist talent</li> <li>Expression of community identity</li> <li>Creation of unique public places</li> </ul>	<ul style="list-style-type: none"> <li>Possible vandalism</li> <li>Additional maintenance considerations</li> </ul>

SHARE YOUR VOICE  
SHAPE OUR CITY



# Connectivity & Corridors

Please place a sticker where you feel attention to Connectivity & Corridors is most needed in the community.



## What are Connectivity & Corridors?

Corridors are primary travel routes between key destinations for pedestrian, cyclist, and vehicular traffic. Connectivity is how well key community and district level destinations are accessible via corridors.

## Why are Connectivity & Corridors important to Royal Gardens?

Royal Gardens experiences traffic associated with district and neighbourhood destinations within the community. Various corridors within Royal Gardens can be enhanced to create more efficient and desirable neighbourhood streets while strengthening overall neighbourhood connectivity.

## Focus Areas – What We Heard

### 3 Focus Area 3: Wayfinding Signage



**What We Heard:** Opportunity to develop wayfinding signage to direct pedestrians and cyclists through the community to key destinations.

### 6 Focus Area 6: 114 Street Enhanced Pedestrian & Cyclist Connection (40 Avenue to 44A Avenue)



**What We Heard:** Community members identified the opportunity for an enhanced pedestrian and cyclist connection from 40 Avenue, along 114 Street, to the Whitemud Drive pedestrian bridge.

### 8 Focus Area 8: Bus Stop Improvements



**What We Heard:** The community identified that bus stops could be improved. Some bus stops do not have benches or shelters. The addition of bus stop amenities should be explored.

\* Construction of the 43 Avenue Shared Use Path has been completed, along with a speed reduction from 50km/h to 30km/h on 117 Street between 40 and 43 Avenues. As part of the 43 Avenue Shared Use Path Project, the remainder of the roadway changes along 117 Street (Raised Crosswalks) will be constructed with Neighbourhood Renewal in 2019/2020.

# Connectivity & Corridors

Please use stickers to indicate your level of comfort with each idea. Use a post-it note to write down which element you like/don't like and why.

## 3 Focus Area 3: Wayfinding Signage



Site-specific considerations:  
Sign design and location selection considerations.

Potential Elements	Benefits	Trade-offs
<b>Provide Directions to:</b> - Southgate Mall/LRT Station - Whitemud Creek Ravine - Royal Gardens Park - Rainbow Valley Road - Confederation Park - Sign at Intersection of 43 Avenue and 111 Street - Sign at 40 Avenue and 119 Street	Improved pedestrian and cyclist connectivity within the community and to surrounding destinations	Additional maintenance considerations

What is your overall level of comfort?

1 2 3 4 5 >

(1 is the lowest level of comfort, 5 is the highest)

What do you like/don't like about the potential elements?

Add your comments here

## 8 Focus Area 8: Bus Stop Improvements



Site-specific considerations:  
Future bus stop locations are contingent on the Bus Network Redesign.

Potential Elements	Benefits	Trade-offs
<b>Updating existing and installing new bus stop shelters</b>	Enhanced experience for transit riders Protection from the elements while waiting for buses	Possible vandalism Additional maintenance considerations
<b>Benches</b>	Resting areas for ETS transit riders	Possible vandalism of furniture

1 2 3 4 5 >

Add your comments here

SHARE YOUR VOICE  
SHAPE OUR CITY

# Connectivity & Corridors

Please use stickers to indicate your level of comfort with each idea. Use a post-it note to write down which element you like/don't like and why.

## 6 Focus Area 6: 114 Street Enhanced Pedestrian & Cyclist Connection (40 Avenue to 44A Avenue)



**Site-specific considerations:**  
Adequate right-of-way width. Impacts to existing trees. Impacts to properties fronting onto 114 Street. Enhanced connection may need appropriate warning signs to improve safety.

Potential Elements	Benefits	Trade-offs
<b>Wider sidewalks</b>	<ul style="list-style-type: none"> <li>Improved pedestrian connectivity between multiple community destinations i.e. Greenfield Community League, St. Stanislaus Elementary School, and the Petrolia Mall to the south, and the Confederation Park to the north</li> </ul>	<ul style="list-style-type: none"> <li>Loss of roadway space</li> </ul>

What is your overall level of comfort?

1 2 3 4 5 >

(1 is the lowest level of comfort, 5 is the highest)

What do you like/don't like about the potential elements?

Add your comments here

At the past public engagement event, the opportunity for an enhanced bike connection along 114 Street was identified. Below are benefits and trade-offs of bike route designs.

Potential Elements	Benefits	Trade-offs
<b>Shared Roadway (currently exists along 114 Street)</b>	<ul style="list-style-type: none"> <li>Supports year-round cycling</li> </ul>	<ul style="list-style-type: none"> <li>Lack of dedicated space for cyclists</li> </ul>
<b>Protected Bike Lane</b>	<ul style="list-style-type: none"> <li>Separation of cyclists from pedestrians and motorists</li> <li>Supports year-round cycling</li> <li>Encourages people to choose cycling as a safe, healthy and efficient alternative to driving</li> </ul>	<ul style="list-style-type: none"> <li>Road space required which may result in: the road becoming one-way, removal of on-street parking, removal of boulevard trees</li> </ul>
<b>Bike Boulevard/Painted Bike Lane</b>	<ul style="list-style-type: none"> <li>Additional road space not required since cyclists and motorists share</li> <li>Supports year-round cycling</li> <li>Encourages people to choose cycling as a safe, healthy and efficient alternative to driving</li> </ul>	<ul style="list-style-type: none"> <li>No physical separation between cyclists and motor vehicles.</li> <li>Traffic calming measures often required to ensure vehicles operate at safe/comfortable speeds for shared space</li> <li>Could impact parking</li> </ul>
<b>Raised Bike Lane</b>	<ul style="list-style-type: none"> <li>Separation of cyclists from pedestrians and motorists</li> <li>Supports year-round cycling</li> <li>Encourages people to choose cycling as a safe, healthy and efficient alternative to driving</li> </ul>	<ul style="list-style-type: none"> <li>Road space required which may result in: the road becoming one-way, removal of on-street parking, removal of boulevard trees or roadway narrowing</li> </ul>
<b>Shared use Path</b>	<ul style="list-style-type: none"> <li>Usually on parkland or road right-of-way</li> <li>Use the path to travel in both directions</li> <li>Supports year-round cycling</li> <li>Encourages people to choose cycling as a safe, healthy and efficient alternative to driving</li> </ul>	<ul style="list-style-type: none"> <li>Cyclists and pedestrians share the space</li> <li>Space required may result in removal of existing boulevard trees or roadway narrowing</li> </ul>

Please identify the most appropriate bike route design for 114 Street considering the benefits and trade-offs.

Shared Roadway (current)	Protected Bike Lane	Bike Boulevard/Painted Bike Lane	Raised Bike Lane	Shared use Path



Shared Roadway (currently exists along 114 Street)    Protected Bike Lane    Bike Boulevard/Painted Bike Lane    Raised Bike Lane    Shared use Path

SHARE YOUR VOICE  
SHAPE OUR CITY



# Traffic

Please place a sticker at locations you believe experience traffic-related concerns.



## Traffic-Related Concerns

Traffic issues within the Royal Gardens neighbourhood, associated with school areas, emerged as one of the key concerns from the public feedback that was collected in previous public engagement. There is an opportunity to consider different roadway designs as part of neighbourhood renewal to help improve this.

Your feedback will help us identify what is most important to you regarding traffic-related design elements so we can make a decision on appropriate projects.

## Focus Areas – What We Heard

### 5 Focus Area 5: Richard Second Traffic Improvements



**What We Heard:** It was identified that 117 Street between 40 Avenue and 41 Avenue experience high levels of traffic and congestion during peak school drop-off and pick-up hours. The opportunity to create wider sidewalks along 117 Street was also identified.

### 7 Focus Area 7: Harry Ainlay and Louis St Laurent Traffic Improvements



**What We Heard:** Opportunities for more defined and coordinated pedestrian crossings along 43 Avenue connecting the community to the schools and recreational facilities.

### 9 Focus Area 9: Intersection of 40 Ave and 114 St



**What We Heard:** Opportunity to improve pedestrian crossing, traffic flow, and safety at the intersection of 40 Avenue and 114 Street.

# Traffic

Considering the benefits/trade-offs and how you travel around your neighbourhood, what is your level of comfort with encountering these measures on a daily basis? Please indicate with a sticker. Please tell us if there are elements you like/don't like and why with a sticky note.

## 5 Focus Area 5: Richard Second School Traffic Improvements



**Site-specific considerations:**  
Space for drop-off loop on Edmonton Public School Board land. Dependent on drop-off funding availability.

Potential Elements	Benefits	Trade-offs
<b>Curb Extensions</b>	<ul style="list-style-type: none"> <li>Reduces crossing distances for pedestrians</li> <li>Improves visibility</li> </ul>	<ul style="list-style-type: none"> <li>May force cyclists to move to the centre</li> <li>May result in loss of some street parking</li> </ul>
<b>Raised Crosswalk</b>	<ul style="list-style-type: none"> <li>Slows traffic in the area</li> <li>Improves pedestrian safety</li> <li>Improves access for people with mobility aids</li> </ul>	<ul style="list-style-type: none"> <li>May increase traffic noise due to increased braking</li> <li>Discomfort for transit passengers</li> <li>Increased congestion</li> </ul>
<b>Drop-off Loop</b>	<ul style="list-style-type: none"> <li>More space for drop-off</li> <li>Separation of traffic from loading and drop-off</li> <li>Alleviate some congestion from roadway</li> </ul>	<ul style="list-style-type: none"> <li>Requires a lot of space and could impact existing uses</li> <li>Could create conflict points at entrances/exits of the drop off</li> <li>Potential loss of green spaces and trees</li> <li>Alleviating congestion on road could cause other safety issues</li> </ul>
<b>Speed Humps</b>	<ul style="list-style-type: none"> <li>Slows traffic in the area</li> </ul>	<ul style="list-style-type: none"> <li>May increase traffic noise due to increased braking</li> <li>Discomfort for transit passengers</li> </ul>
<b>Rapid Rectangular Flashing Beacons (RRFBs)</b>	<ul style="list-style-type: none"> <li>Provides safe crossing opportunities but only when needed</li> <li>Improves driver awareness of crossing</li> </ul>	<ul style="list-style-type: none"> <li>Overplacement in close proximity has potential to reduce effectiveness</li> </ul>
<b>Wider Sidewalks</b>	<ul style="list-style-type: none"> <li>Improved pedestrian connectivity</li> </ul>	<ul style="list-style-type: none"> <li>Potential loss of roadway space</li> </ul>

### Curb Extensions



### What do you like/don't like?

Add your comments here

### Drop-Off Loop



Add your comments here

### What is your overall level of comfort?

1 2 3 4 5

(1 is very uncomfortable, 5 is very comfortable)

1 2 3 4 5

### Wider Sidewalks



Add your comments here

### Rapid Rectangular Flashing Beacons (RRFBs)



Add your comments here

### Raised Crosswalk



Add your comments here

### Speed Hump



Add your comments here

1 2 3 4 5

1 2 3 4 5

1 2 3 4 5

1 2 3 4 5

SHARE YOUR VOICE  
SHAPE OUR CITY

# Traffic

Considering the benefits/trade-offs and how you travel around your neighbourhood, what is your level of comfort with encountering these measures on a daily basis? Please indicate with a sticker. Please tell us if there are elements you like/don't like and why with a sticky note.

## 7 Focus Area 7: Harry Ainlay and Louis St Laurent Traffic Improvements



Site-specific considerations:  
Multiple crosswalks currently exist across 43 Avenue.

Potential Elements	Benefits	Trade-offs
<b>Curb Extensions</b>	<ul style="list-style-type: none"> <li>- Reduces crossing distances for pedestrians</li> <li>- Improves visibility</li> </ul>	<ul style="list-style-type: none"> <li>- May force cyclists to move to the centre</li> <li>- May result in loss of some street parking</li> </ul>
<b>Raised Crosswalk</b>	<ul style="list-style-type: none"> <li>- Slows traffic in the area</li> <li>- Improves pedestrian safety</li> <li>- Improves access for people with mobility aids</li> </ul>	<ul style="list-style-type: none"> <li>- May increase traffic noise due to increased braking</li> <li>- Discomfort for transit passengers</li> <li>- Increased congestion</li> </ul>
<b>Speed Humps</b>	<ul style="list-style-type: none"> <li>- Slows traffic in the area</li> </ul>	<ul style="list-style-type: none"> <li>- May increase traffic noise due to increased braking</li> <li>- Discomfort for transit passengers</li> </ul>
<b>Pedestrian Control (ex. Crosswalk Lights)</b>	<ul style="list-style-type: none"> <li>- Provides safe crossing opportunities but only when needed</li> <li>- Improves driver awareness of crossing</li> </ul>	<ul style="list-style-type: none"> <li>- Overplacement in close proximity has potential to reduce effectiveness</li> </ul>

### Curb Extensions



### What do you like/don't like?

Add your comments here

### Raised Crosswalk



Add your comments here

### What is your overall level of comfort?

1 2 3 4 5

(1 is very uncomfortable, 5 is very comfortable)

1 2 3 4 5

### Speed Hump



Add your comments here

### Rapid Rectangular Flashing Beacons (RRFBs)



Add your comments here

1 2 3 4 5

1 2 3 4 5

SHARE YOUR VOICE  
SHAPE OUR CITY

# Traffic

Considering the benefits/trade-offs and how you travel around your neighbourhood, what is your level of comfort with encountering these measures on a daily basis? Please indicate with a sticker. Please tell us if there are elements you like/don't like and why with a sticky note.

## 9 Focus Area 9: Intersection of 40 Ave and 114 St



Site-specific considerations:  
Existing four-way stop intersection.

Potential Elements	Benefits	Trade-offs
Signalization	<ul style="list-style-type: none"><li>- Interrupt heavy traffic to permit pedestrians or other traffic</li><li>- Better pedestrian crossing after dark</li><li>- Provide for orderly movement of traffic</li><li>- Increase traffic capacity of the intersection</li><li>- Provide for continuous or near continuous movement of traffic along a given route</li></ul>	<ul style="list-style-type: none"><li>- Can result in increased delay in certain directions at certain times of day</li></ul>

## Signalization



## What do you like/don't like?

Add your comments here

## What is your overall level of comfort?



(1 is very uncomfortable, 5 is very comfortable)

SHARE YOUR VOICE  
SHAPE OUR CITY

Edmonton

# Traffic

Considering the benefits/trade-offs and how you travel around your neighbourhood, what is your level of comfort with encountering these measures on a daily basis? Please indicate with a sticker. Please tell us if there are elements you like/don't like and why with a sticky note.

## Throughout the Whole Neighbourhood

Potential Elements	Benefits	Trade-offs
<b>Curb Extensions</b>	<ul style="list-style-type: none"> <li>- Reduces crossing distances for pedestrians</li> <li>- Improves visibility</li> </ul>	<ul style="list-style-type: none"> <li>- May force cyclists to move to the centre</li> <li>- May result in loss of some street parking</li> </ul>
<b>Raised Crosswalk</b>	<ul style="list-style-type: none"> <li>- Slows traffic in the area</li> <li>- Improves pedestrian safety</li> <li>- Improves access for people with mobility aids</li> </ul>	<ul style="list-style-type: none"> <li>- May increase traffic noise due to increased braking</li> <li>- Discomfort for transit passengers</li> <li>- Increased congestion</li> </ul>
<b>Speed Humps</b>	<ul style="list-style-type: none"> <li>- Slows traffic in the area</li> </ul>	<ul style="list-style-type: none"> <li>- May increase traffic noise due to increased braking</li> <li>- Discomfort for transit passengers</li> </ul>
<b>Raised Intersection</b>	<ul style="list-style-type: none"> <li>- Slows traffic in the area</li> <li>- Improves pedestrian safety</li> <li>- Improves access for people with mobility aids</li> </ul>	<ul style="list-style-type: none"> <li>- Discomfort for transit passengers</li> </ul>

### Curb Extensions



### What do you like/don't like?

Add your comments here

### Raised Crosswalk



Add your comments here

### What is your overall level of comfort?

1 2 3 4 5

(1 is very uncomfortable, 5 is very comfortable)

1 2 3 4 5

### Raised Intersection



Add your comments here

### Speed Hump



Add your comments here

1 2 3 4 5

1 2 3 4 5

SHARE YOUR VOICE  
SHAPE OUR CITY

