

HAVE
YOUR SAY



Have Your Say!

To comply with the City of Edmonton's River Valley Area Redevelopment Plan (Bylaw 7188), an Environmental Impact Assessment of the project is being conducted.

Your input is important.

Please provide any information that you wish the project team to consider regarding the environment within, or adjacent to, the project boundaries. A draft is complete.

Put your comments directly on the map with sticky notes or complete the comment form today or online at www.edmonton.ca/setowestlrt

Your comments will be compiled and considered during the finalization of the environmental assessment and future development of mitigation measures.

As part of the EIA, the following field investigations have been completed or are underway:

- **Vegetation** – vegetation and rare plant surveys, completed in summer 2012.
- **Wildlife** – a breeding bird survey, completed in spring 2012; wildlife movement reconnaissance, winter 2012.
- **Fish** – a fish and fish habitat assessment, completed as part of the earlier planning phase.
- **Geotechnical** – a series of boreholes have been drilled in the river valley, to characterize fills, surficial deposits, and bedrock and, where appropriate, assess contaminants.
- **Hydrology** – borehole data is being used to assess groundwater conditions.
- **Historical Resources** – archaeological and paleontological impact assessments, completed in 2011.
- **Noise and vibration assessment** – completed in 2012.





An Environmental Impact Assessment (EIA) document is being prepared to meet the requirements of the City of Edmonton's North Saskatchewan River Valley Area Redevelopment Plan (Bylaw 7188).

The EIA:

- Describes existing environmental conditions
- Assesses potential impacts
- Describes mitigation measures intended to eliminate or reduce impacts to each Valued Environmental Component (VEC)
- The following VECs are being assessed to identify ways in which the proposed project could affect biophysical and socio-economic resources:
 - **geology and geomorphology (including slope stability)**
 - **soils**
 - **surface water and groundwater**
 - **vegetation**
 - **wildlife**
 - **habitat connectivity**
 - **fish and aquatic resources**
 - **land disposition and zoning**
 - **residential land use**
 - **recreational land use**
 - **utilities**
 - **worker and public safety**
 - **visual resources**
 - **historical resources**
- The EIA may also be submitted to Fisheries and Oceans Canada and Transport Canada as supporting information for **Fisheries Act** and **Navigable Waters Protection Act** approvals, respectively.

ENVIRONMENTAL RESOURCES IN WAGNER PARK (NATURAL AREA 402)



TRANSFORMING | **EDMONTON**
BRINGING OUR CITY VISION TO LIFE

GREEN PROJECT INITIATIVES

- Landscaping at Wagner Station will emphasize green space with intent to create a stepping stone linkage between the Natural Area and upstream reaches of Mill Creek.
- Guideway drainage has been designed to provide additional inputs of water to the ravine, enhancing amphibian habitat and riparian community sustainability.

EXAMPLES OF SPECIES OBSERVED IN THE NATURAL AREA

Amphibians

- Boreal chorus frog
- Wood frog

Birds

- Swainson's hawk
- Tree swallow
- Clay-coloured sparrow
- White-throated sparrow
- Black-billed magpie
- Yellow warbler

Mammals

- Porcupine
- Coyote

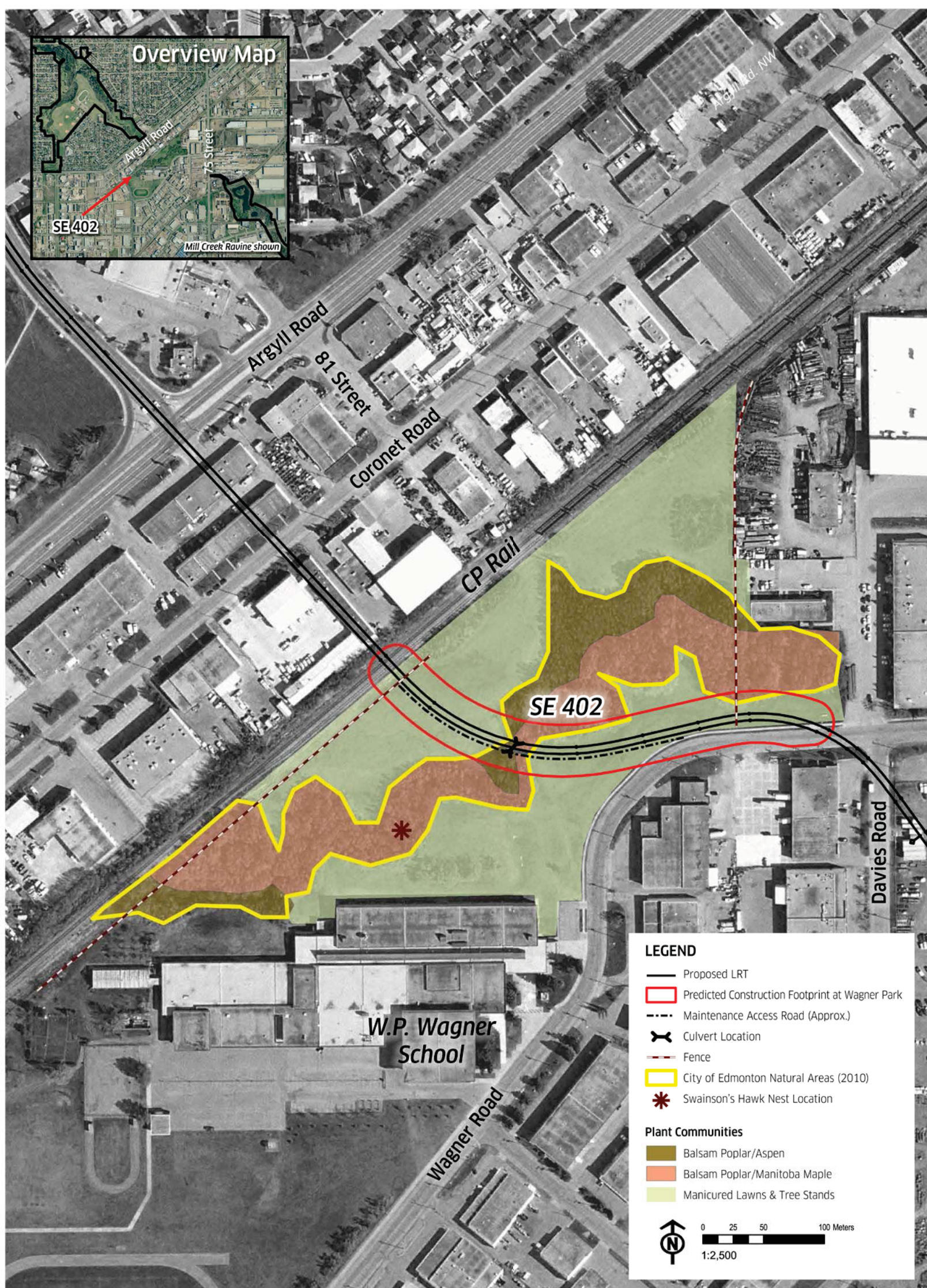
POTENTIAL IMPACTS AND MITIGATION MEASURES

- Loss of vegetation and habitat resulting from clearing**
- Restore temporary working space within the Natural Area; restore some manicured lands north of the Natural Area (area yet to be determined).
 - Compensate for tree/shrub loss as required by City's Corporate Tree Policy.
 - Locate access road within Manitoba Maple community to extent possible.

- Disturbance to rare plants**
- Transplant and monitor rare plants found within the project area.

- Habitat fragmentation**
- Landscape to close gaps created during construction.
 - Ensure that the new access road culvert is wildlife friendly.

- Disturbance to nesting Swainson's hawks**
- Undertake required vegetation clearing between 01 September and 15 March.
 - If active nest is present in year of construction, avoid significant construction at Wagner Park until young are independent, approximately August - have biologist confirm.



Aerial Photograph Date: May 2012



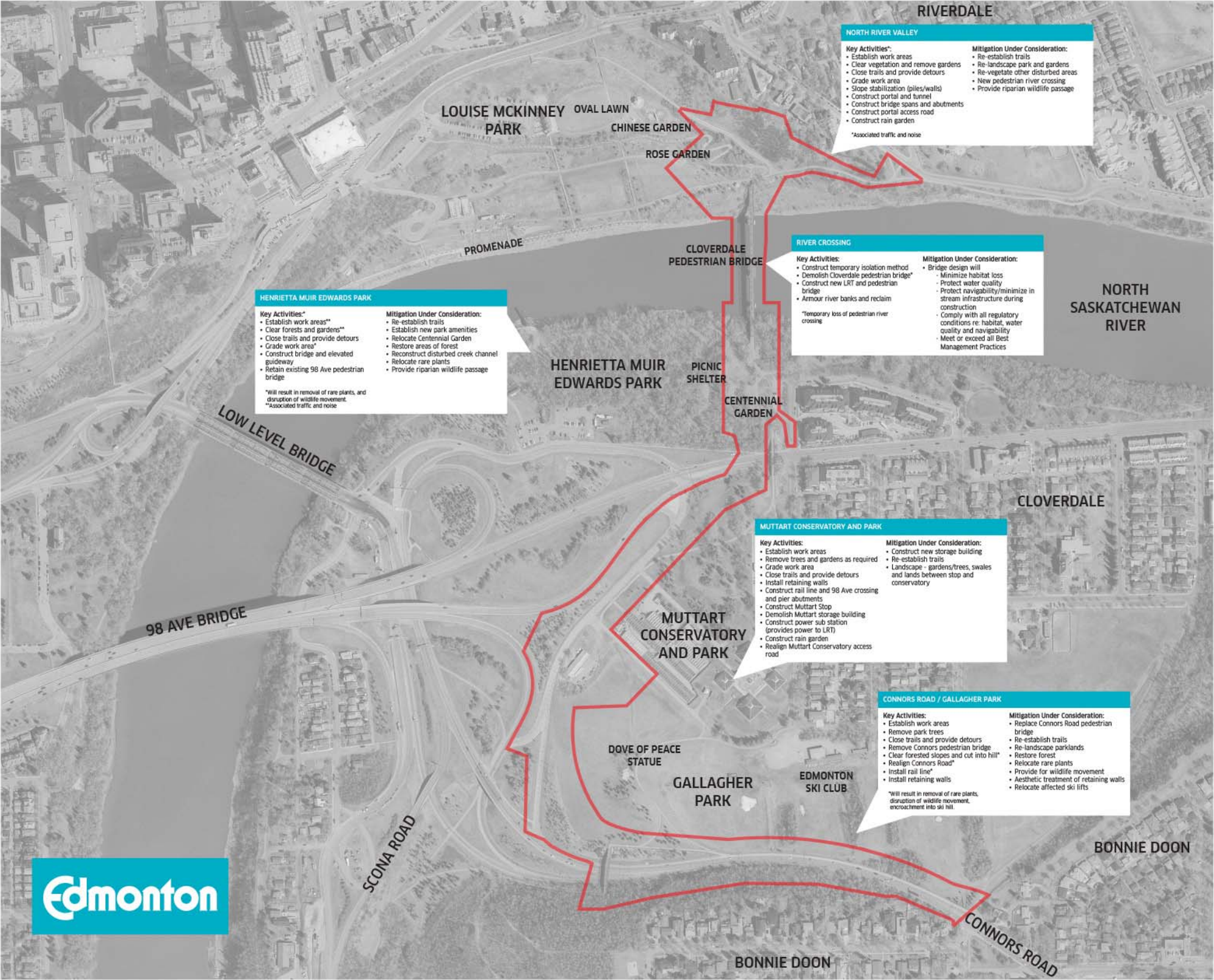
ENVIRONMENTAL IMPACT ASSESSMENT

Key Activities and Mitigation
Under Consideration



TRANSFORMING | EDMONTON

BRINGING OUR CITY VISION TO LIFE



ENVIRONMENTAL IMPACT ASSESSMENT

Existing Trails, Possible Detours and
Proposed Construction Areas



TRANSFORMING | EDMONTON
BRINGING OUR CITY VISION TO LIFE

