

Corridor & Access Plan - Area 5B



156 Street Stop

Notes: Design coordinated with Stony Plain Road Streetscape Initiative. Layout of Transit Centre and Transit Oriented Development subject to a separate planning exercise. 156 Street Stop to currently under review. Cross section to be confirmed through Preliminary Design.

Existing Conditions

Concept Rendering

Views above look east along 100A Avenue to 156 Street intersection. (See * symbol on plan.)

Stop Design Elements (Based on your feedback, elements selected for project will be similar to images above)

- Bench
- Recycling Bin
- Paving
- Column Wrap
- Railing

Stop Images View 11

149 Street Stop

Notes: Design coordinated with Stony Plain Road Streetscape Initiative. Cross section to be confirmed through Preliminary Design.

Existing Conditions

Concept Rendering

Views above look east along Stony Plain Road towards 151 Street. (See * symbol on plan.)

Stop Design Elements (Based on your feedback, elements selected for project will be similar to images above)

- Bench
- Recycling Bin
- Paving
- Column Wrap
- Railing

Stop Images View 10

142 Street Stop

Notes: Cross section to be confirmed through Preliminary Design.

Existing Conditions

Concept Rendering

Views above look east along Stony Plain Road from 142 Street intersection. (See * symbol on plan.)

Stop Design Elements (Based on your feedback, elements selected for project will be similar to images above)

- Bench
- Recycling Bin
- Paving
- Column Wrap
- Railing

Stop Images View 9

Glenora Stop

Notes: Cross section to be confirmed through Preliminary Design.

Existing Conditions

Concept Rendering

Views above look east along Stony Plain Road towards 133 Street. (See * symbol on plan.)

Stop Design Elements (Based on your feedback, elements selected for project will be similar to images above)

- Bench
- Recycling Bin
- Paving
- Column Wrap
- Railing

Stop Images View 8

Bridge Over Groat Road

Existing Conditions

Options:

- Option 1 Concept Rendering (Three-Span Girder - Concrete)
- Option 2 Concept Rendering (Three-Span Girder - Steel)
- Option 3 Concept Rendering (Single Span Haunched Steel Girder)
- Option 4 Concept Rendering (Rigid Frame Steel Girder)

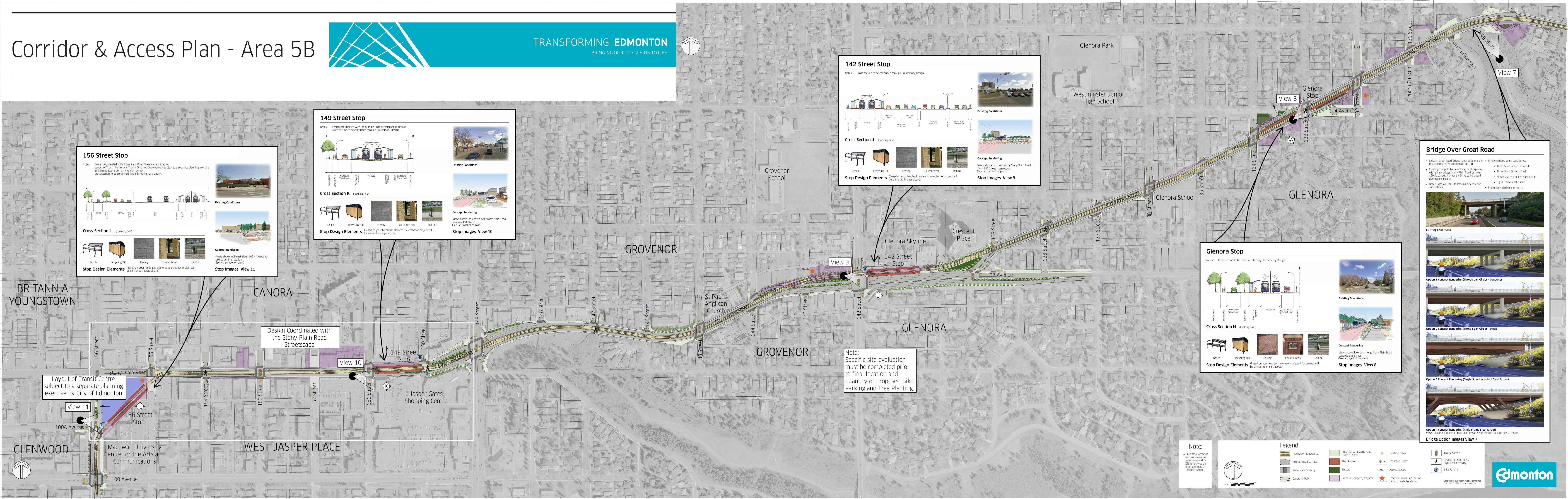
Views above north along Great Road towards Stony Plain Road bridge structure.

Bridge Option Images View 7

Note: Specific site evaluation must be completed prior to final location and quantity of proposed Bike Parking and Tree Planting.

Design Coordinated with the Stony Plain Road Streetscape

Layout of Transit Centre subject to a separate planning exercise by City of Edmonton



Note: All bus stop locations and bus routes are being reviewed by ETS to provide an integrated bus/RT transit system.

Legend

- Trackway - Embedded
- Asphalt Road Surface
- Pedestrian Crossing
- Concrete Walk
- Potential Landscape Area (Hard or Soft)
- Stop Platform
- Shrub
- Potential Property Impacts
- Existing Trees
- Proposed Trees*
- Access Closure
- Traction Power Sub Station (Approximate Location)
- Traffic Signals
- Pedestrian Controlled Signalized Crossing
- Bike Parking*

*Specific site evaluation must be completed prior to final location and quantity.