

NOTES

- COORDINATES AND ELEVATIONS SHOWN ARE IN METRES AND DECIMAL THEREOF. ALL DIMENSIONS ARE IN MILLIMETERS.
- COORDINATES ARE NAD83 3TM (114 W) ELEVATIONS ARE GEODETIC AND HAVE BEEN DERIVED USING THE FOLLOWING MONUMENTS.
 ASCM# 7153
 -N 5939286.105 E 38096.032 EL 656.860
 ASCM# 108963
 -N 5939282.641 E 37784.713 EL 655.943
- EXISTING ASPHALT CAN BE USED PROVIDED IT HAS SUFFICIENT STRENGTH TO SUPPORT NEW LOADS. CONTRACTOR WILL INVESTIGATE & REPORT CROSS-SECTION OF EXISTING ASPHALT. CONSULTANT TO CONFIRM ADEQUACY OF SURFACE. ONCE CONFIRMED SCARIFY & ADD ASPHALT TOPPING TO ELEVATIONS AS SHOWN.
- IF THE EXISTING ASPHALT PAVEMENT IS INADEQUATE OR IF CITY DECIDES OTHERWISE, THE CONTRACTOR SHALL DEMOLISH THE EXISTING ASPHALT PAVEMENT AND PROVIDE NEW PAVEMENT AS SHOWN ON DWG. L01.
- ASPHALT PAVEMENT DESIGN SHALL BE AS PER GEOTECHNICAL REPORT SUBMITTED BY CTE ASSOCIATION DATED FEBRUARY 2004.

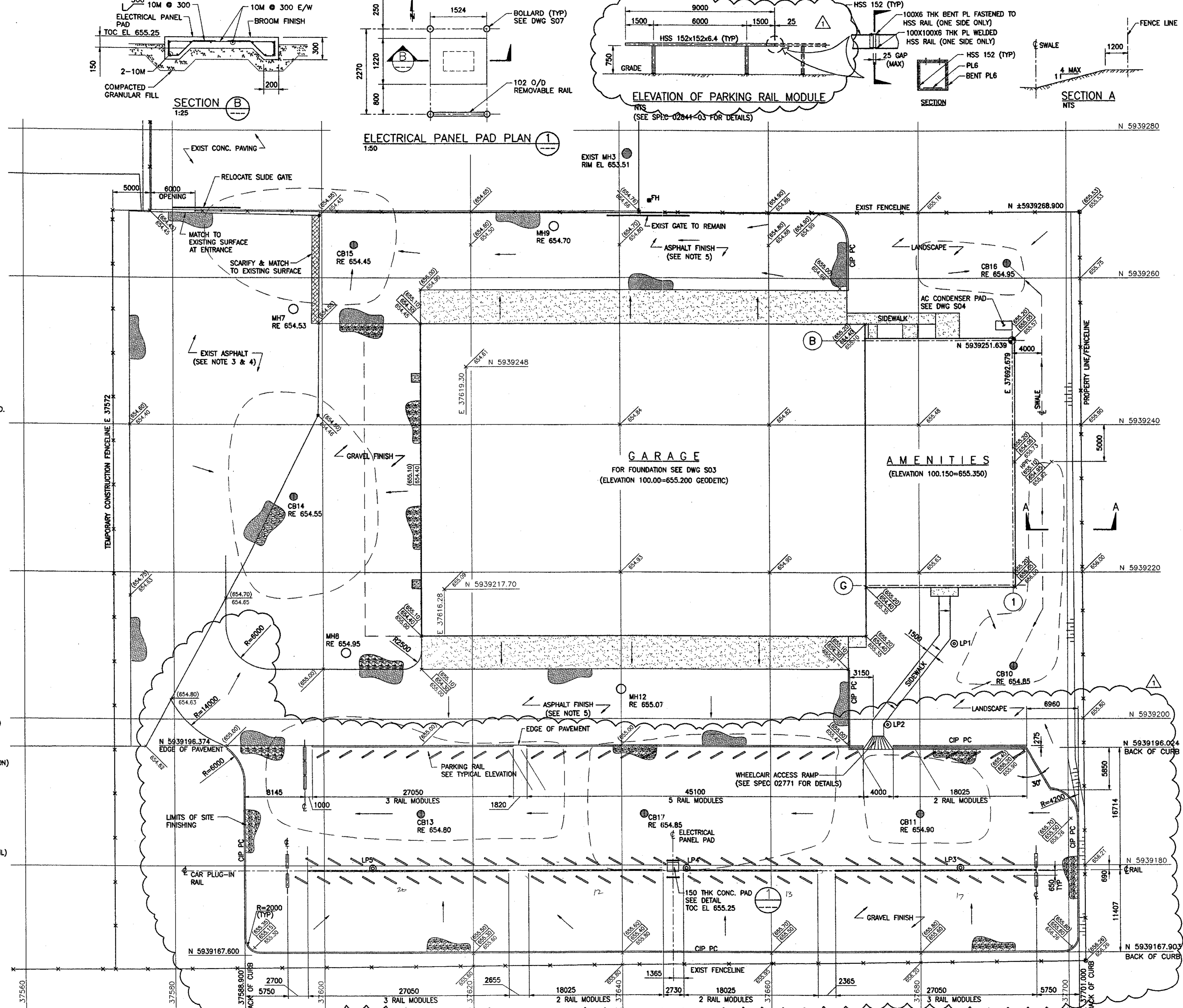
MATERIAL	LAYER THICKNESS (mm)
ASPHALT	100
CRUSHED GRAVEL	150
PITRUN GRAVEL	200
PROPOSED SUBGRADE	AS RECOMMENDED IN GEOTECH. REPORT

6. COORDINATE WITH ELECTRICAL CONTRACTOR FOR THE EXACT LOCATION & DIMENSIONS OF ELECTRICAL PANEL PAD.

7. FOR LANDSCAPING SEE DWG. L01.

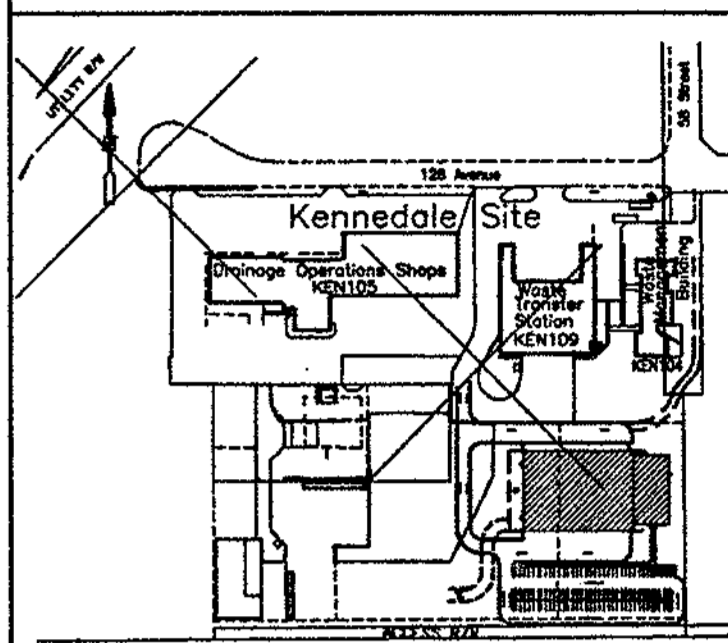
LP NO.	NORTH	EAST	TOC EL.
LP1	5939210.26	37684.68	655.30
LP2	5939499.26	37675.68	655.30
LP3	5939179.437	37685.40	656.20
LP4	5939179.390	37648.65	656.00
LP5	5939179.427	37606.50	655.80

- LEGEND**
- FINISHED GRADE ELEVATION
 - ROUGH GRADE ELEVATION
 - EXISTING GRADE ELEVATION
 - CONTROL OR DATUM POINT
 - CIP PC CAST IN PLACE PARKING CURB (SEE SPEC 02771)
 - TYPICAL PARKING BAY CURB (SEE SPEC 02841 & DWG L01 FOR LOCATION)
 - NEW JERSEY BARRIER (SEE DWG L01 FOR LOCATION)
 - R# CAR PLUG-IN RAIL
 - MH EX MANHOLE/CATCH BASIN
 - MH NEW MANHOLE (SEE SPEC 02531)
 - CB NEW CATCH BASIN (SEE SPEC 02531)
 - LP# NEW LIGHT POLES (SEE SCHEDULE AND SPEC 02841 FOR FDN DETAIL)
 - FH DENOTES NEW FIRE HYDRANT
 - DENOTES 150/200 CONCRETE SLAB (SEE STRUCTURAL DWGS)
 - DENOTES ASPHALT
 - DENOTES GRAVEL
 - PONDING OUTLINE



notes

APPROVED LOT GRADING PLAN
 COMMERCIAL AND MULTI-FAMILY
 SAMPLE DRAWING



no.	description	revisions	date	checked
1	PARKING REVISED		04/08/20	D.A.
0	ISSUED FOR CONST.		04/08/20	D.A.
E	ISSUED FOR TENDER		04/06/14	
D	ISSUED FOR INFORMATION		04/05/21	
C	ISSUED FOR APPROVAL		04/05/11	K.R.
B	ISSUED FOR APPROVAL		04/04/26	D.A.
A	ISSUED FOR IDR		04/04/19	D.A.

Issue date	date

PROFESSIONAL SEAL

PROFESSIONAL PERMIT TO PRACTICE STAMP

CONSULTANT / DEVELOPER INFORMATION

THE CITY OF Edmonton ASSET MANAGEMENT AND PUBLIC WORKS

project
 KENNEDALE WASTE MANAGEMENT VEHICLE STORAGE GARAGE
 location : EDMONTON, ALBERTA

drawing title
 SITE GRADING PLAN
 APP# N-85307

scale 1: 250 UNO all dimensions are in millimeters

drawn by date 04/04/16	drawing no. C03
checked by date	sheet no. 3 of 3
reviewed by date	project no. 33-03-6962
cod file KEN115(MN)-04-C03	