

# Drainage Services Flood Prevention Program

---

Pleasantview  
Community Consultation  
November, 2005 Update



# How Did We Get Here?

- Major flooding in July, 2004
- Flood prevention becomes top priority
- Commitment to public consultation and education
- At risk neighbourhoods identified
- Public meetings in Sep/04

The logo for the City of Edmonton, featuring a stylized blue and white geometric design of a city skyline and the words "City of Edmonton" in a serif font, oriented vertically on the left side of the slide.

# How Did We Get Here?

- Engineering studies of priority neighbourhoods completed Feb/05
- Community consultations in March and April/05
- *floodproof* launched
- Meetings with other stakeholders through the summer and fall/05
- Detail study of input and options
- Additional data collected and analyzed

# *Flood Prevention Program*

- Backwater valve homeowner subsidy program
- Home Flood Prevention Checkup
- Information bulletins, notices and education material to residents
- Ads, stories and educational information in print, on TV, in newspapers and on the web.
- Backwater valve education workshops
- *Homeowners Guide to Flood Prevention*



# Today's Meeting

1. Present recommendations and implementation plan
2. Get your input and feedback
3. Make necessary adjustments
4. Forward package to City Council for budget approval



# After Today's Meeting

1. Summarize and share input
2. Incorporate input into final plan
3. Report progress
4. Continue community consultation as required until work is completed



# July, 2004 Flooding



# Pleasantview







# Pleasantview Findings

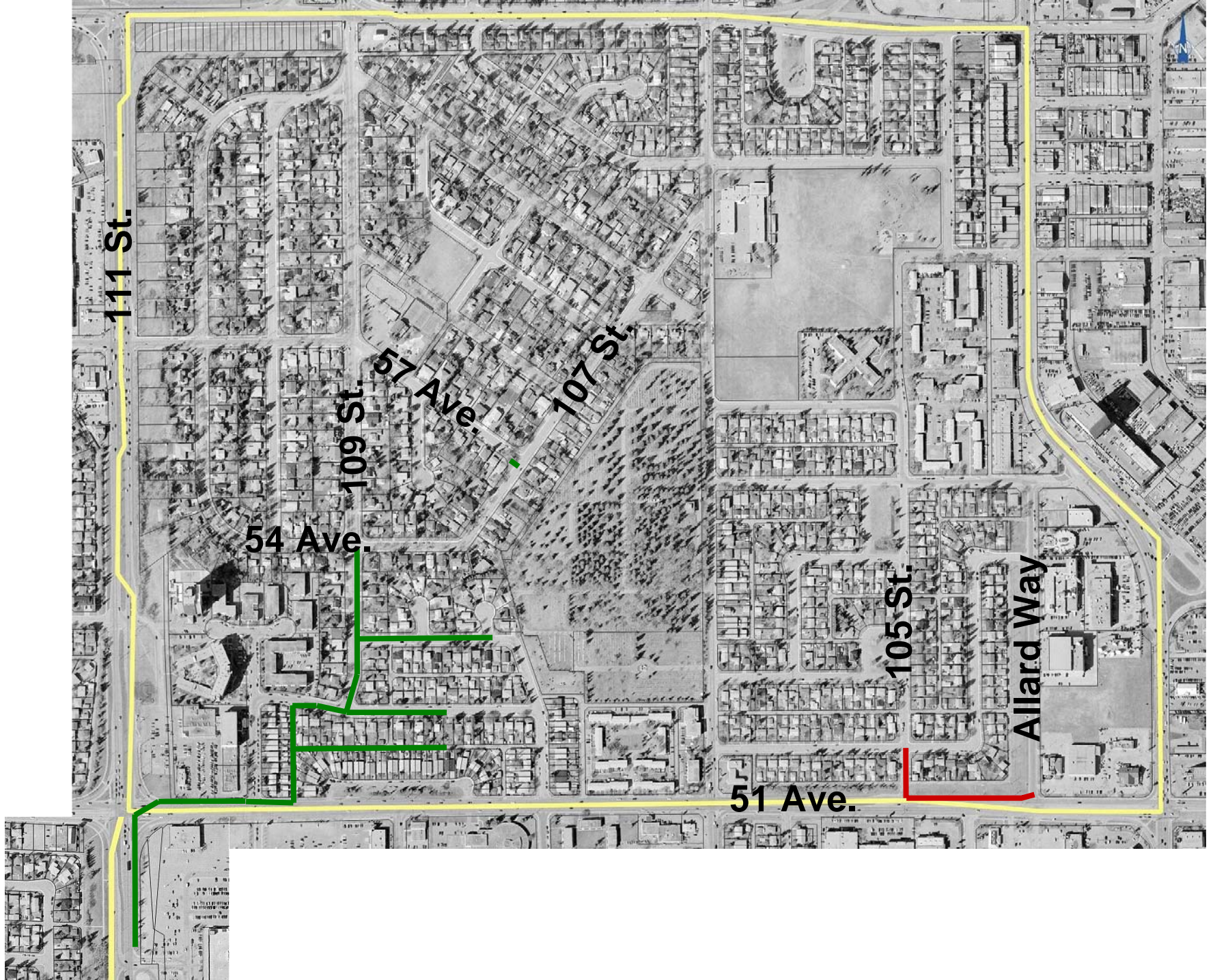
- **Water volume exceeded combined sewer capacity**
- **Stormwater got into combined system:**
  - Street catchbasins
  - Roof downspouts
  - Weeping tile connected to home's sanitary sewer
  - Manhole covers
- **Neighbourhood has natural low area where surface water flows**
- **Poor drainage on private property also contributed to flooding**



# Recommendations for Homeowners

- Install backflow prevention valve
- Improve lot grading to get surface water away from house
- Install/maintain adequate eavestroughs
- Channel downspout water to proper place





111 St.

109 St.

57 Ave.

107 St.

54 Ave.

105 St.

51 Ave.

Allard Way

# Cost of System Improvements

<b>Combined Sewer Diversion</b> <ul style="list-style-type: none"> <li>• 250 m of 675 mm</li> <li>• 14 ha area</li> </ul>	\$500,000
<b>Sewer Separation – New Storm Sewer</b> <ul style="list-style-type: none"> <li>• 1,000 m, from 375 mm to 1,050 mm</li> <li>• 23 ha area</li> </ul>	\$3,360,000
<b>Total</b>	<b>\$3,860,000*</b>
<b>* Note: pending Council approval</b>	





# City Wide Implementation Plan

- Overall, ten year timeframe investing more than \$100 million in 43 communities
- Focus on most critical needs first
- Consult/inform community and others on design and construction





# Pleasantview Implementation Plan

Proactive Backflow Valve Program	Ongoing
Flood Prevention Home Checkup Program	Ongoing
Combined Sewer Diversion	Near Term * (2 – 3 years)
Sewer Separation	Mid Term * (3 – 5 years)

\* Note: pending Council approval

The image features a vertical banner on the left side with the text "City of Edmonton" in a stylized font. The background of the banner shows a modern building with a glass facade and a large, triangular, lattice-like structure on top, situated behind a body of water.

# What's Next

- Continue design work in 2006
- Repeat successful homeowner support programs in 2006
- Complete studies for 28 remaining at-risk communities by Jan/06
- Incorporate all needs into a Flood Prevention Program Implementation Plan
- Present complete package to City Council for approval in spring 2006

The logo for the City of Edmonton is positioned vertically on the left side of the slide. It features a stylized image of a modern building with a glass facade and a triangular roof, set against a blue background. The text "City of Edmonton" is written in a serif font, oriented vertically.

# What are the Benefits?

- Quicker overall drainage
- Less pooling of water on the surface
- Less likelihood of basement flooding
- Less property damage
- Savings of time, money and inconvenience



# Discussion and Feedback

Clarifying Questions?



Issues, comments, concerns?



Additional information needs?