

Drainage Services Flood Prevention Program

**McKernan & Parkallen
Communities Consultation
November, 2005 Update**



How Did We Get Here?

- **Major flooding in July, 2004**
- **Flood prevention becomes top priority**
- **Commitment to public consultation and education**
- **At risk neighbourhoods identified**
- **Public meetings in Sep/04**



How Did We Get Here?

- **Engineering studies of priority neighbourhoods completed Feb/05**
- **Community consultations in March and April/05**
- ***floodproof* launched**
- **Meetings with other stakeholders through the summer and fall/05**
- **Detail study of input and options**
- **Additional data collected and analyzed**

Flood Prevention Program

- **Backwater valve homeowner subsidy program**
- **Home Flood Prevention Checkup**
- **Information bulletins, notices and education material to residents**
- **Ads, stories and educational information in print, on TV, in newspapers and on the web.**
- **Backwater valve education workshops**
- ***Homeowners Guide to Flood Prevention***



Today's Meeting

- 1. Present recommendations and implementation plan**
- 2. Get your input and feedback**
- 3. Make necessary adjustments**
- 4. Forward package to City Council for budget approval**



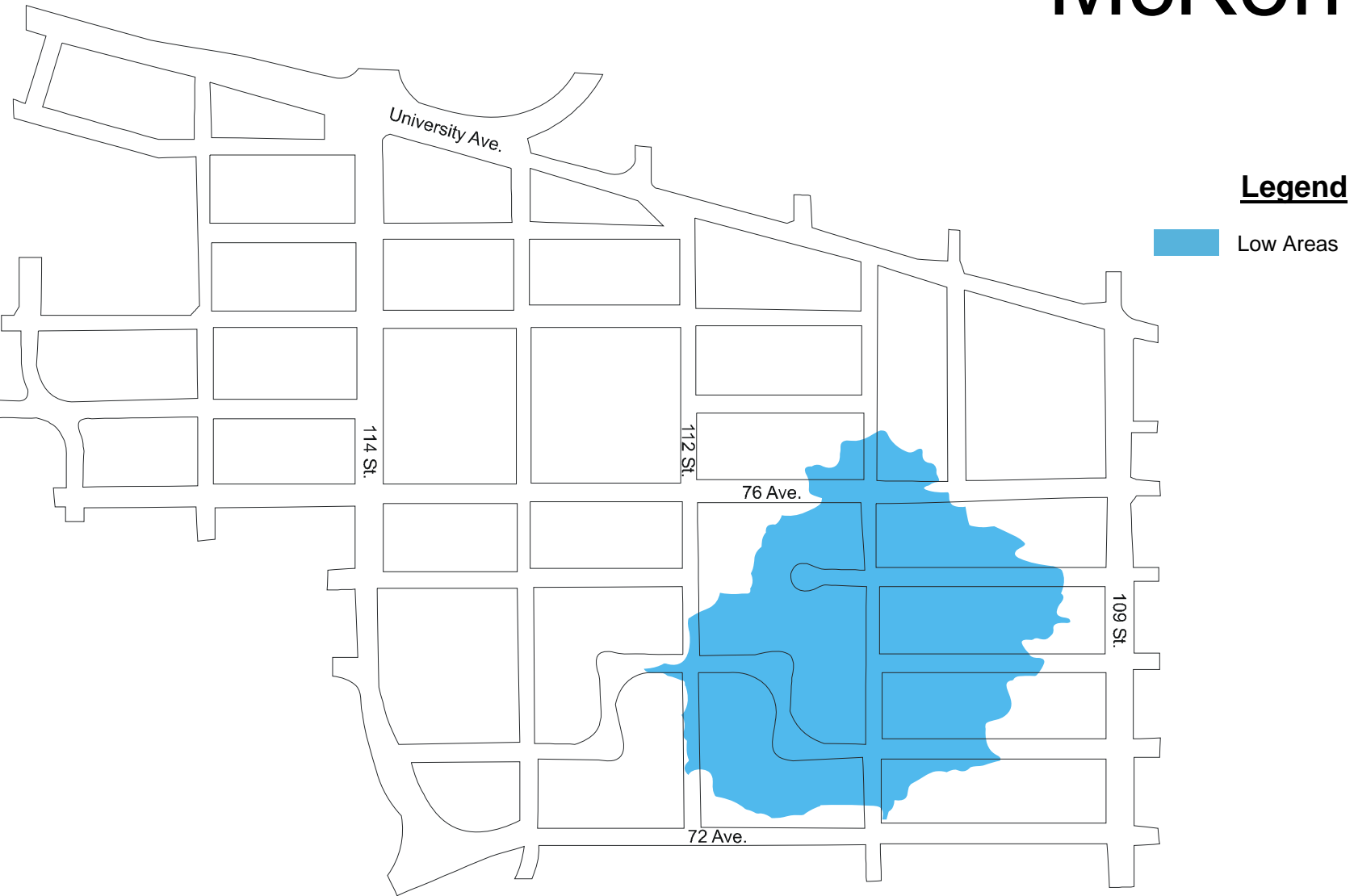
After Today's Meeting

- 1. Summarize and share input**
- 2. Incorporate input into final plan**
- 3. Report progress**
- 4. Continue community consultation as required until work is completed**

July, 2004 Flooding




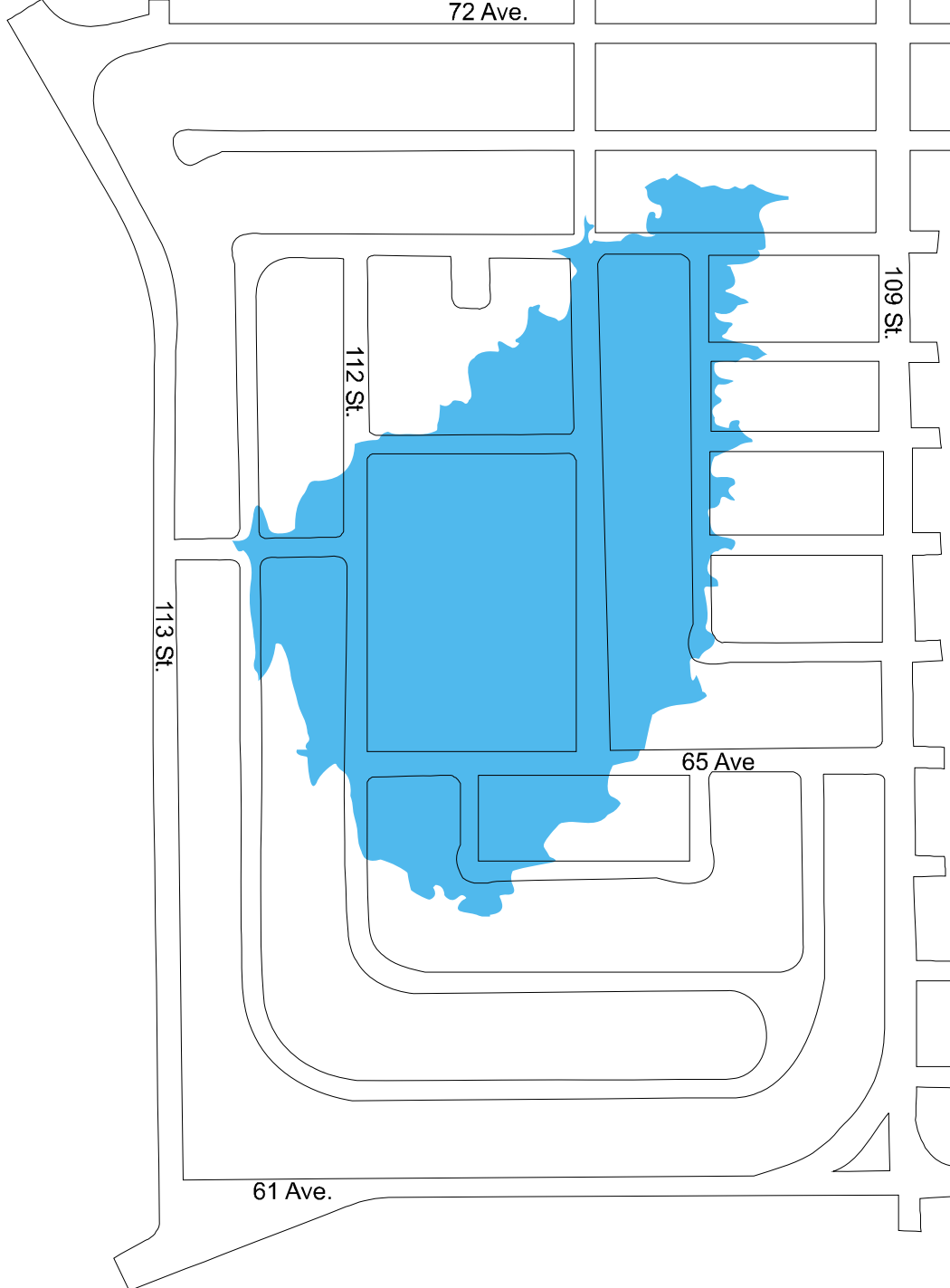
McKernan



Parkallen

Legend

 Low Areas





McKernan & Parkallen Findings

- **Water volume exceeded local storm sewer capacity**
- **Downstream storm trunk backed up**
- **Stormwater got into sanitary system**
- **Sanitary & Storm sewers with interconnections operated as one**
- **Neighbourhoods have natural low areas where surface water flows**
- **Poor drainage on private property also contributed to flooding**



Recommendations for Homeowners

- **Install backflow prevention valve**
- **Improve lot grading to get surface water away from house**
- **Install/maintain adequate eavestroughs**
- **Channel downspout water to proper place**



109 St.

111 St.

76 Ave.

72 Ave.



111 St.

65 Ave.

61 Ave.

66 Ave.



71A Ave.

Belgravia Road

114 St.



EXISTING OUTFALL INVERT
EL. 617.27

OUTFALL WORK AREA

10m X 25m EXCAVATION

PROTECT EXISTING
VEGETATION

TRAIL DETOUR

45m X 110m
LAYDOWN AREA

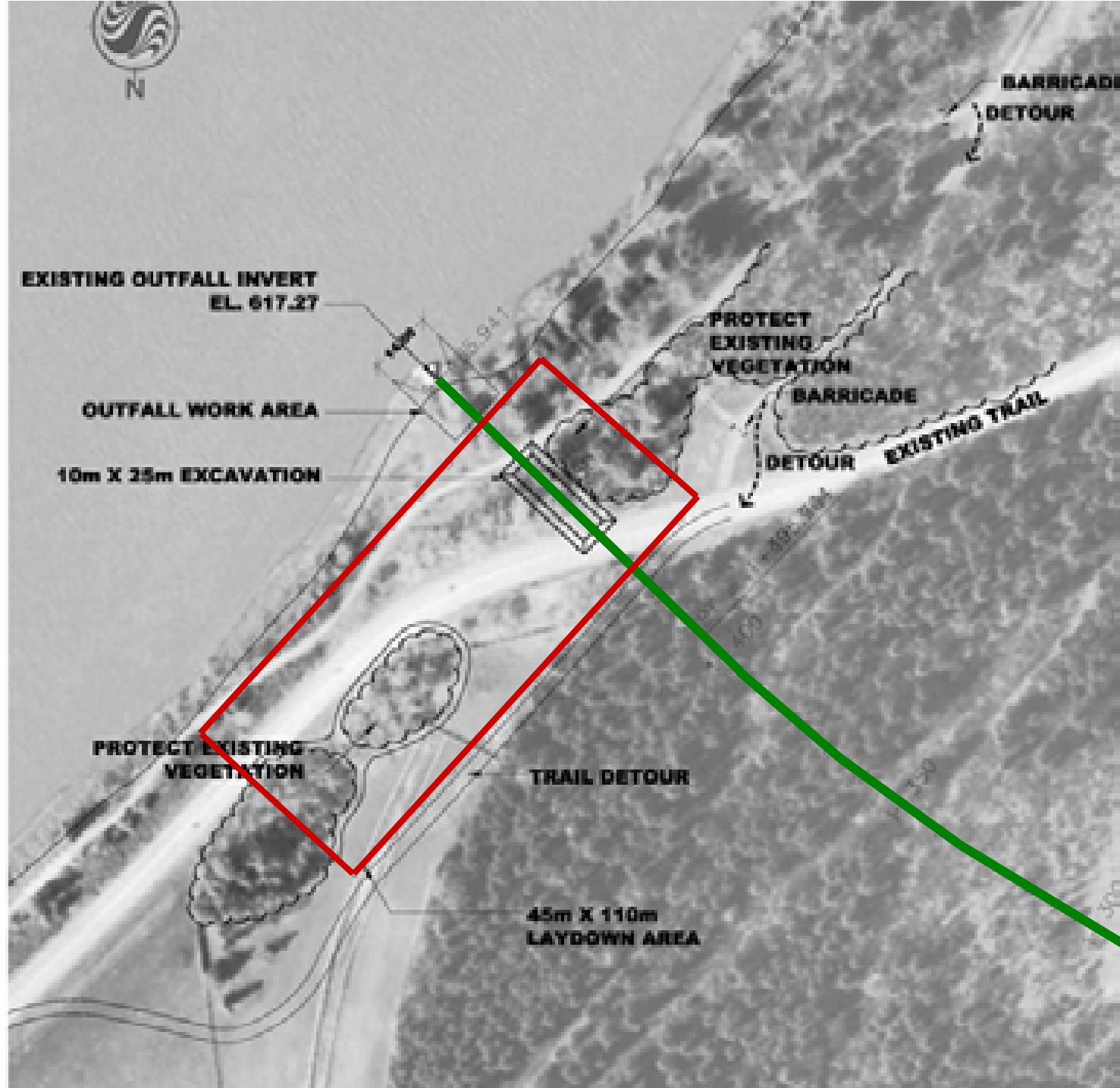
PROTECT
EXISTING
VEGETATION

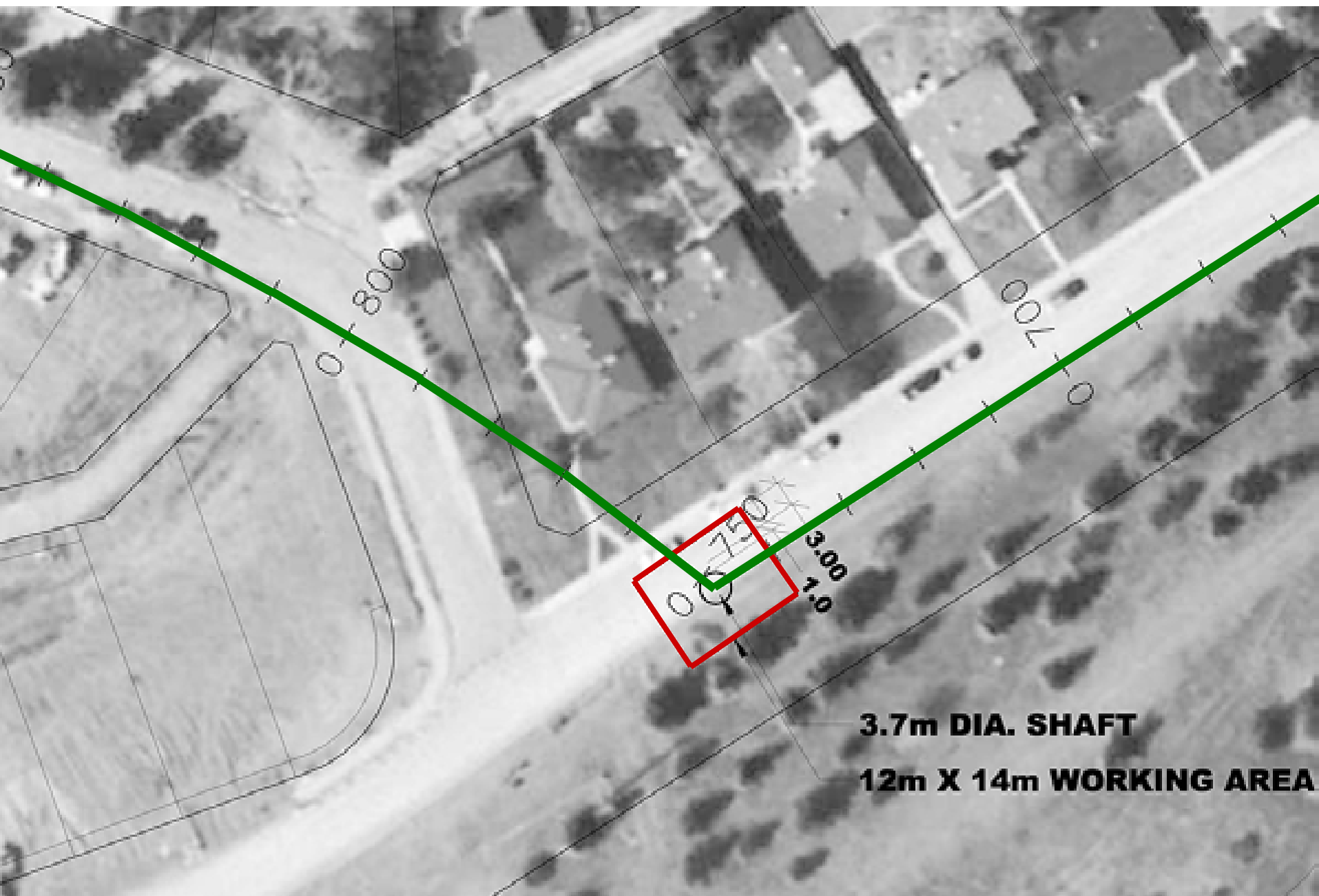
BARRICADE

DETOUR

EXISTING TRAIL

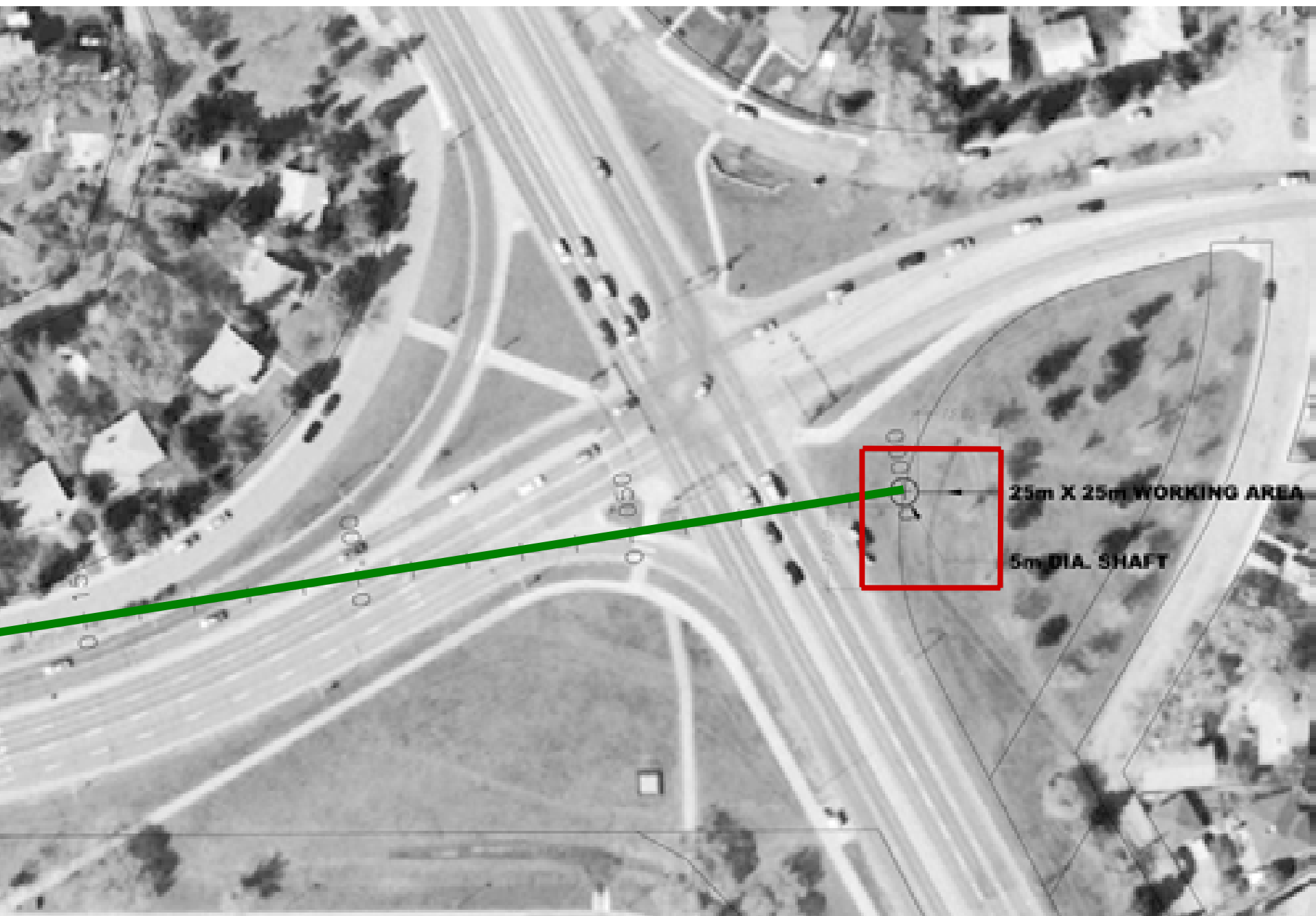
BARRICADE
DETOUR





3.7m DIA. SHAFT

12m X 14m WORKING AREA





Cost of System Improvements

McKernan Sanitary Relief Sewer (290 m of 675 mm – on 76 Ave.)	built
McKernan Sanitary Sewer Diversion (420 m of 600 mm – on 111 St.)	built
Parkallen Sanitary Relief Sewer (110 m of 375 mm – lane N of 66 Ave.)	built
Parkallen Sanitary Sewer Diversion (500 m of 600 mm – on 111 St.)	\$1,710,000
Belgravia Storm Tunnel (1,500 m of 2900 mm)	\$12,750,000
Total	\$14,460,000*

*** Note: pending Council approval**



City Wide Implementation Plan

- **Overall, ten year timeframe investing more than \$100 million in 43 communities**
- **Focus on most critical needs first**
- **Consult/inform community and others on design and construction, especially surface components like dry ponds**

Implementation Plan

Manhole Sealing	Complete
Proactive Backflow Valve Program	Ongoing
Flood Prevention Home Checkup Program	Ongoing
Sanitary Sewer Diversion & Relief Projects	Complete
Parkallen Sanitary Sewer Diversion	Near Term * (1 – 2 years)
Belgravia Storm Tunnel	Mid Term * (2 – 3 years)

*** Note: pending Council approval**

The logo for the City of Edmonton is positioned vertically on the left side of the slide. It features a photograph of a modern building with a large, triangular, glass-enclosed roof structure, situated behind a body of water. The text "City of Edmonton" is written vertically in a serif font, with "City" and "Edmonton" in a larger size than "of".

What's Next

- **Continue design work in 2006**
- **Repeat successful homeowner support programs in 2006**
- **Complete studies for 28 remaining at-risk communities by Jan/06**
- **Incorporate all needs into a Flood Prevention Program Implementation Plan**
- **Present complete package to City Council for approval in spring 2006**



What are the Benefits?

- **Quicker overall drainage**
- **Less pooling of water on the surface**
- **Less likelihood of basement flooding**
- **Less property damage**
- **Savings of time, money and inconvenience**

The logo for the City of Edmonton, featuring a stylized blue and white geometric design of a city skyline with a prominent tower, set against a dark blue background.

Discussion and Feedback

Clarifying Questions?



Issues, comments, concerns?



Additional information needs?