



# Drainage Services Flood Prevention Program

---

Malmo Plains  
Community Consultation  
November, 2005 Update



# How Did We Get Here?

- Major flooding in July, 2004
- Flood prevention becomes top priority
- Commitment to public consultation and education
- At risk neighbourhoods identified
- Public meetings in Sep/04



# How Did We Get Here?

- Engineering studies of priority neighbourhoods completed Feb/05
- Community consultations in March and April/05
- *floodproof* launched
- Meetings with other stakeholders through the summer and fall/05
- Detail study of input and options
- Additional data collected and analyzed



# *Flood Prevention Program*

- Backwater valve homeowner subsidy program
- Home Flood Prevention Checkup
- Information bulletins, notices and education material to residents
- Ads, stories and educational information in print, on TV, in newspapers and on the web.
- Backwater valve education workshops
- *Homeowners Guide to Flood Prevention*



# Today's Meeting

1. Present recommendations and implementation plan
2. Get your input and feedback
3. Make necessary adjustments
4. Forward package to City Council for budget approval



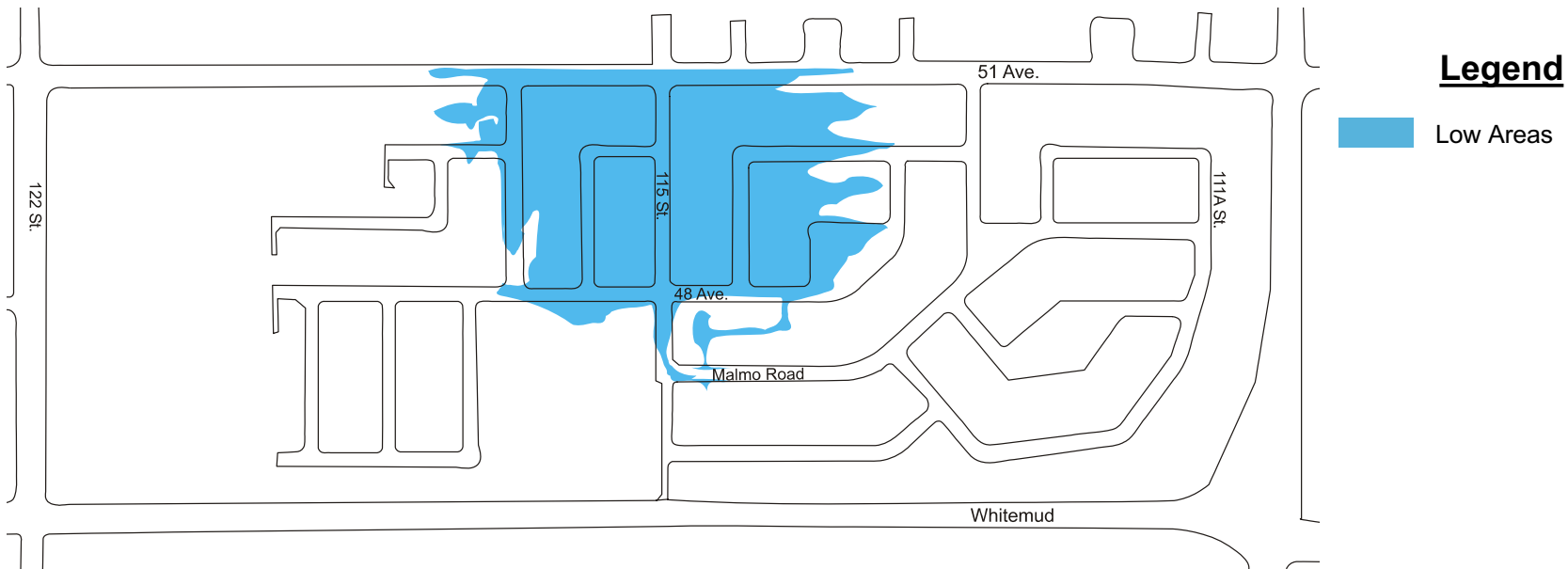
# After Today's Meeting

1. Summarize and share input
2. Incorporate input into final plan
3. Report progress
4. Continue community consultation as required until work is completed

# July, 2004 Flooding



# Malmö Plains





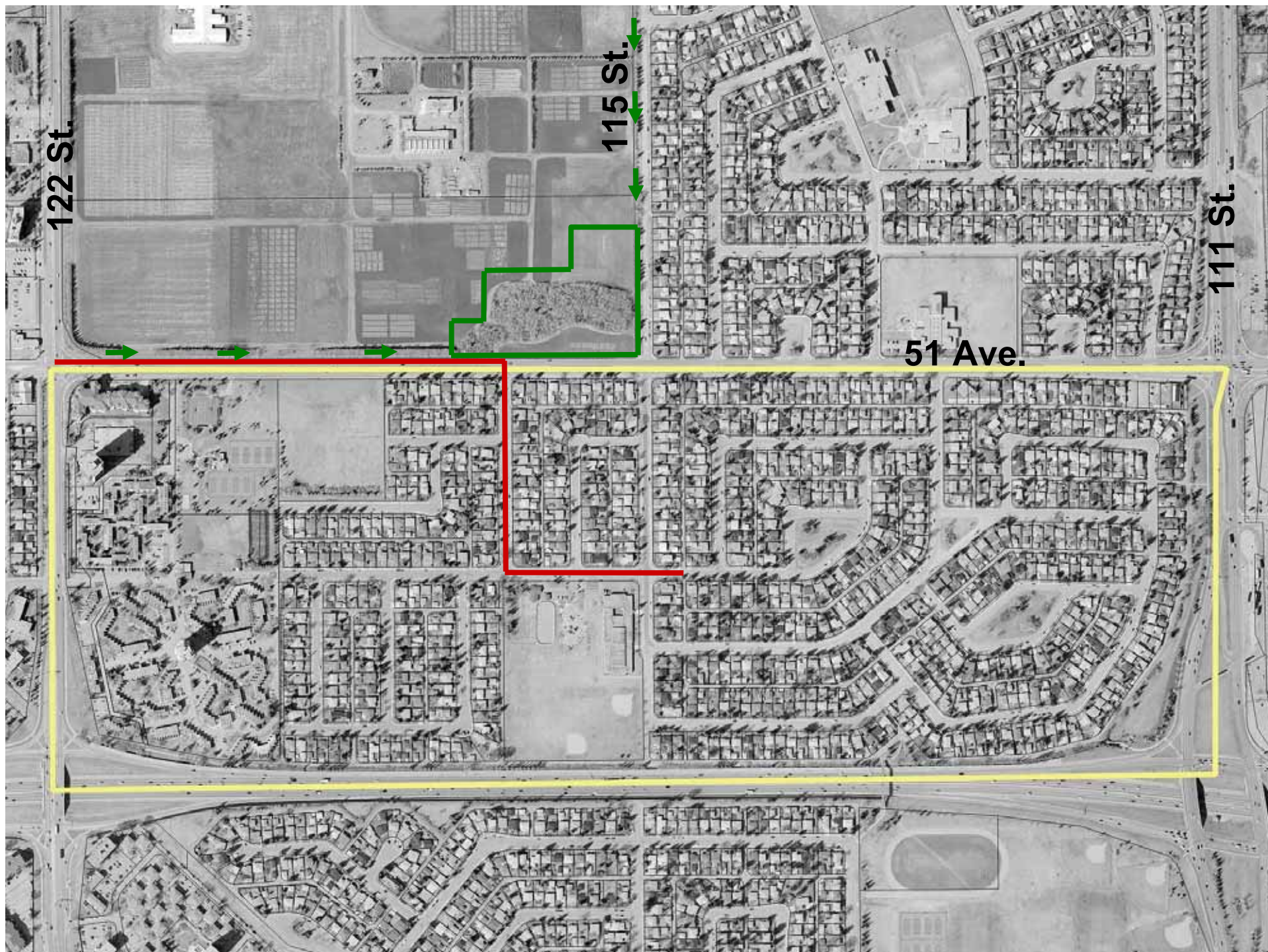
# Malmo Plains Findings

- Water volume exceeded storm sewer capacity
- Stormwater got into sanitary system
- Downstream sanitary system inadequate
- Neighbourhood has natural low areas where surface water flows
- Poor drainage on private property also contributed to flooding



# Recommendations for Homeowners

- Install backflow prevention valve
- Improve lot grading to get surface water away from house
- Install/maintain adequate eavestroughs
- Channel downspout water to proper place





51 Ave.

51 Avenue

115 St.

115 Street



# Cost of System Improvements

<b>Sanitary Relief Sewer</b> <ul style="list-style-type: none"><li>• 1,350 m, from 375 mm to 600 mm</li><li>• along 51 Ave. to 122 St.</li></ul>	<b>\$2,500,000</b>
<b>Storm Pond</b> <ul style="list-style-type: none"><li>• 30,000 m<sup>3</sup></li><li>• South Campus near 115 St. &amp; 51 Ave.</li></ul>	<b>\$800,000</b>
<b>Total</b>	<b>\$3,300,000*</b>
<b>* Note: pending Council approval</b>	



# City Wide Implementation Plan

- Overall, ten year timeframe investing more than \$100 million in 43 communities
- Focus on most critical needs first
- Consult/inform community and others on design and construction



# Malmo Plains Implementation Plan

<b>Manhole Sealing</b>	<b>Complete</b>
<b>Proactive Backflow Valve Program</b>	<b>Ongoing</b>
<b>Flood Prevention Home Checkup Program</b>	<b>Ongoing</b>
<b>Sanitary Relief Sewer</b>	<b>Near Term *</b> (1 – 2 years)
<b>South Campus Storm Pond</b>	<b>Mid Term *</b> (3 – 5 years)

**\* Note: pending Council approval**



# What's Next

- Continue design work in 2006
- Repeat successful homeowner support programs in 2006
- Complete studies for 28 remaining at-risk communities by Jan/06
- Incorporate all needs into a Flood Prevention Program Implementation Plan
- Present complete package to City Council for approval in spring 2006



# What are the Benefits?

- Quicker overall drainage
- Less pooling of water on the surface
- Less likelihood of basement flooding
- Less property damage
- Savings of time, money and inconvenience



# Discussion and Feedback

Clarifying Questions?



Issues, comments, concerns?



Additional information needs?