



# Tweddle Place Storm and Sanitary Upgrades

## Project Update to Millbourne Community

November 19, 2015



# 2015 Construction Progress



# Project Activities to Date



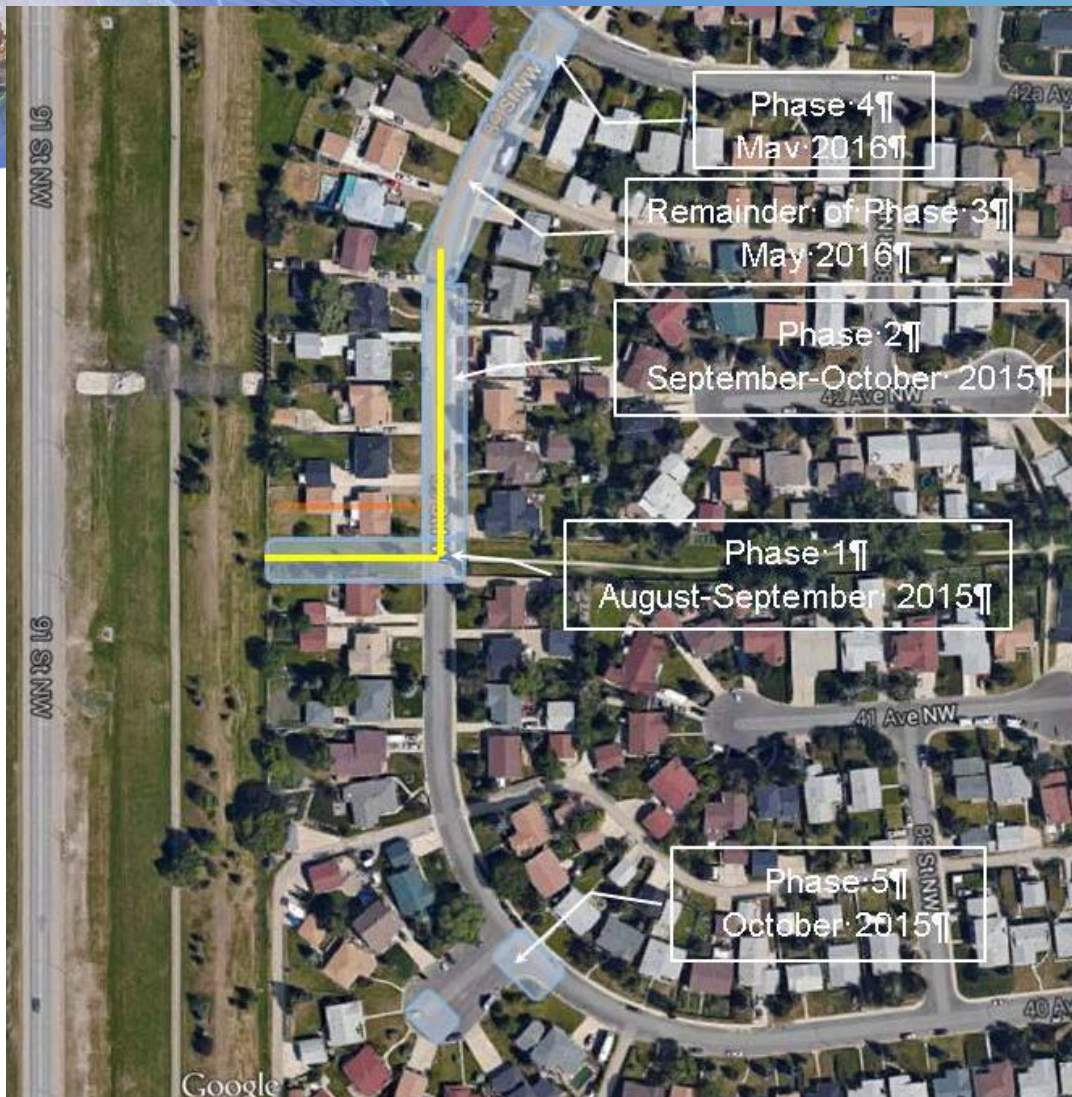
- Finalizing detailed design drawings
- Preparing tender documents for 2016



- 2015 - TP2A.1 – 89 Street construction



# 2015 Construction Progress





# 2016 Work Plan



# Construction Staging

- 2016 – TP4, MB1A, access ~ 6 months
- 2016 and 2017 – dry pond expansion, access

Whitemud Drive

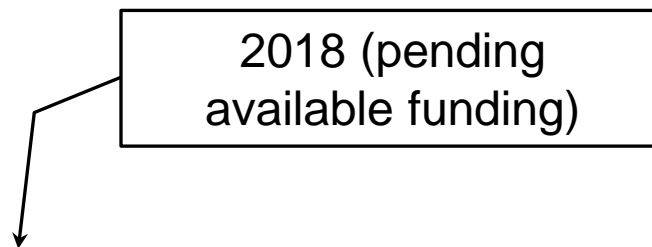
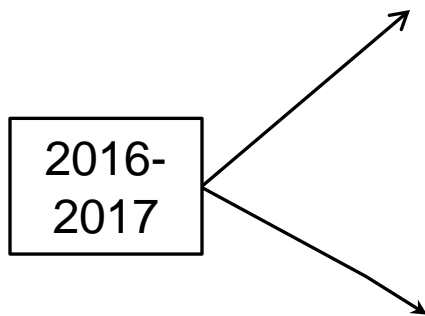
44 Avenue

91 Street

85 Street

43 Avenue









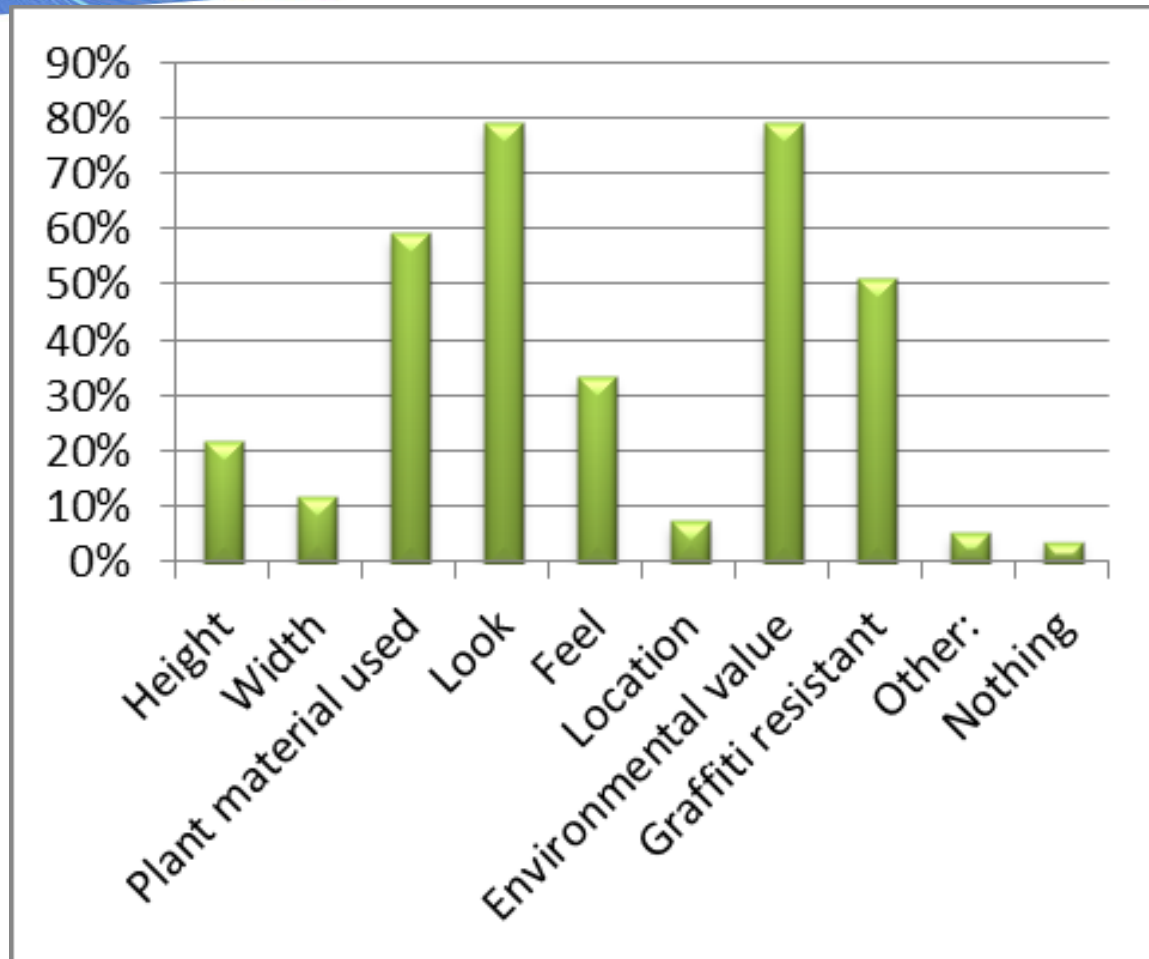
# Living Wall Demonstration Project



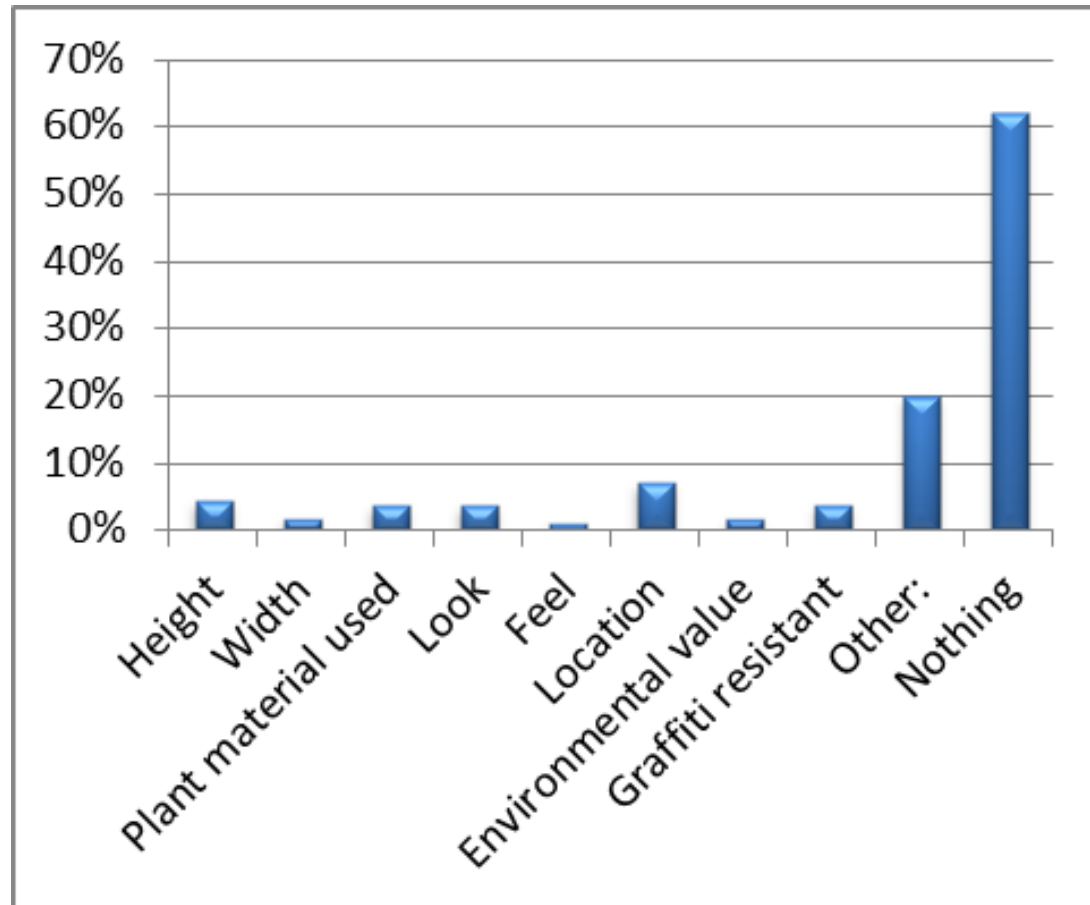
# Living Wall Demonstration

- Planted additional 2000 willows
- Completed noise monitoring
  - Conclusion: Living wall slightly better
- Water costs higher than expected
  - Dry summer
  - Compensate for water shut off
- 186 questionnaire responses received

# What respondents liked most



# What respondents liked least







# Next Steps

- Update pond design and associated works based on feedback
- Procure sewer construction contractor – March 2016
- Procure dry pond expansion contractor – June 2016
- Close land agreements – April 2016



# Questions, Comments or Concerns

Contact: Diane Wirtz, Project Manager  
[diane.wirtz@edmonton.ca](mailto:diane.wirtz@edmonton.ca)  
780.944.5975