



# July 2012 Flooding Update

Southwest Edmonton  
Communities Consultation  
October 11, 2012



# Today's Meeting

1. Share preliminary results on July storm and flooding information collected to date
2. Report on the status of current flood improvement projects in the area
3. Explain Homeowner's Flood Proofing Program, subsidies, and Provincial Disaster Recovery Program
4. Outline next steps
5. Answer questions/get input and feedback



# After Today's Meeting

1. Summarize and share meeting input
2. Consider community input in work ahead
3. Report on progress of current projects
4. Keep communities informed as studies are completed and improvement options developed
5. Return to the community to present and discuss findings/options in Spring 2013

Please hold questions until after presentation



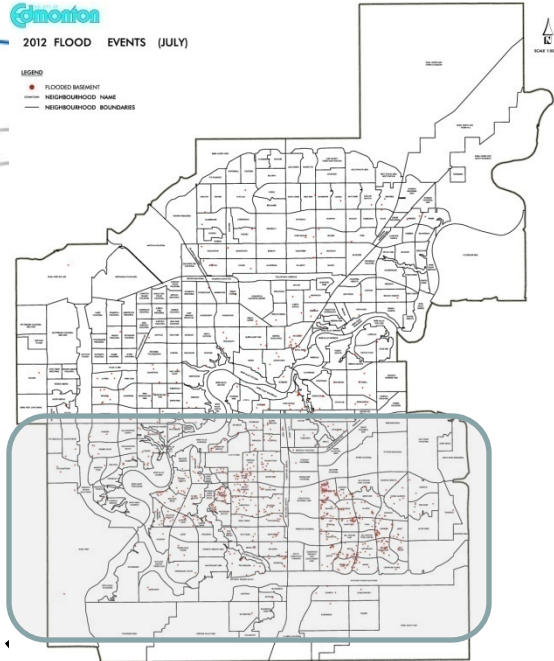
# July 2012 Storms

- 4 extreme storm events: localized, intense, short duration

Date	Rainfall	Duration	Area	Category
July 12	50 mm	90 minutes	south Edmonton	E6
July 14-15	85 to 105 mm	30 hour	southeast and west Edmonton	E3
July 17-18	30 mm	30 minutes	south Edmonton	E5
July 23	20 to 25 mm	30 minutes	south and west Edmonton	E5

- Area south and west of the city received as much as 240 mm of rain, compared to 90 mm average for July
- The July 12 storm resulted in more than 2.4 million cubic metres of rainfall in the area (2 ½ Commonwealth Stadium)

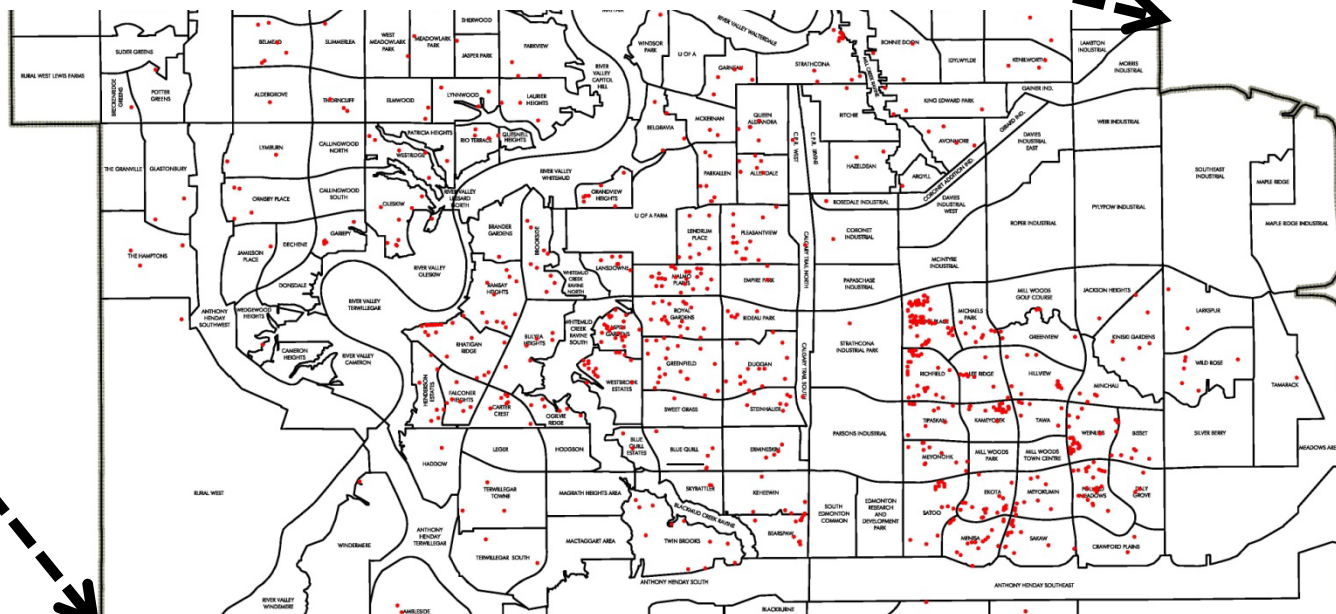




# Impact of Storms

July 12 to August 31, 2012

- 4982 total calls received by 311
- 1752 reported basement flooding
- 200 in Southwest Edmonton Area





# Drainage Response

- Responded to calls to 311
- Conducted field investigations and preliminary assessments
- Emergency repair works
  - ✓ Catch basins and manholes
  - ✓ Sewer main ruptures and blockage removals
  - ✓ Park trail and bridge abutment repair/slope stabilization



# Preliminary Assessment Findings

- Localized, intense and short duration storms
  - Heavy rain, hail and strong winds
  - Can occur with little prior notice
  - Can cover several neighbourhoods - not necessarily whole city
  - Flooding on roads and underpasses
  - Water in basement can come from window wells, doors, seepage, sewer backups
- Southwest Edmonton Communities' reported basement flooding breakdown (approximately):
  - 16% Sanitary backup
  - 24% Private property issues (e.g. seepage, sump pumps, lot grading)
  - 60% Undetermined causes



# Preliminary Assessment Findings

- The storm, sanitary and combined system capacities were exceeded during the July storms
- The storm trunk sewers surcharged and backed up local sewer systems in these areas

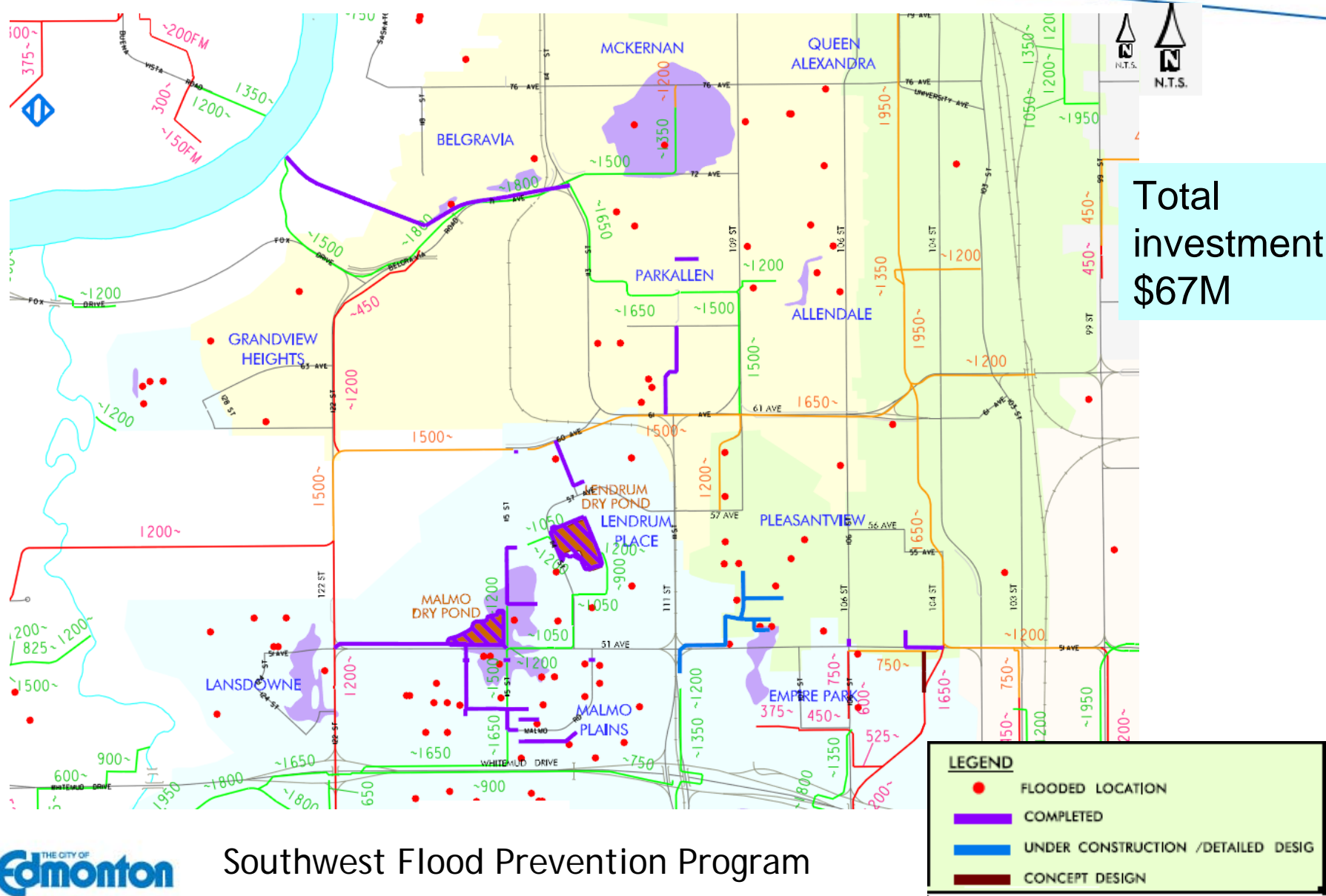


# Flood Prevention Program – City wide

- July 2004, City experienced extreme storm resulting in 4,500 flooded homes
- City Council approved \$146M Flood Prevention Program in 2006 to address most-at-risk Neighbourhoods
- Complete projects in 31 Neighbourhoods by 2020
- The program includes:
  - Upgrading existing sewers and building new sewers
  - Installation of new storm water management facilities where possible
- Progress
  - 12 neighbourhoods completed
  - 10 neighbourhoods on-going and to be completed by 2014.
  - Total expenditure to date: \$105M

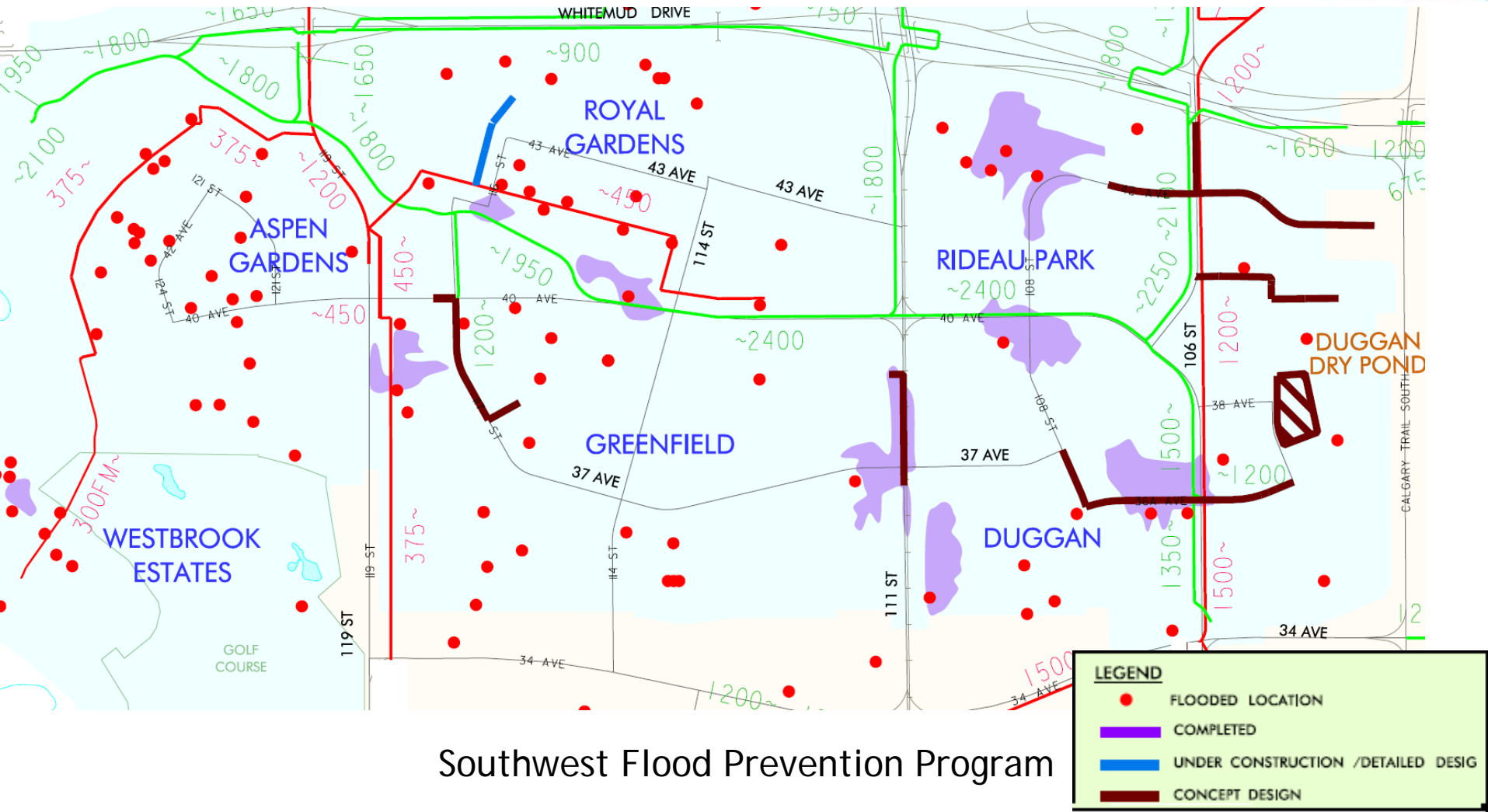


# What has been done in Southwest





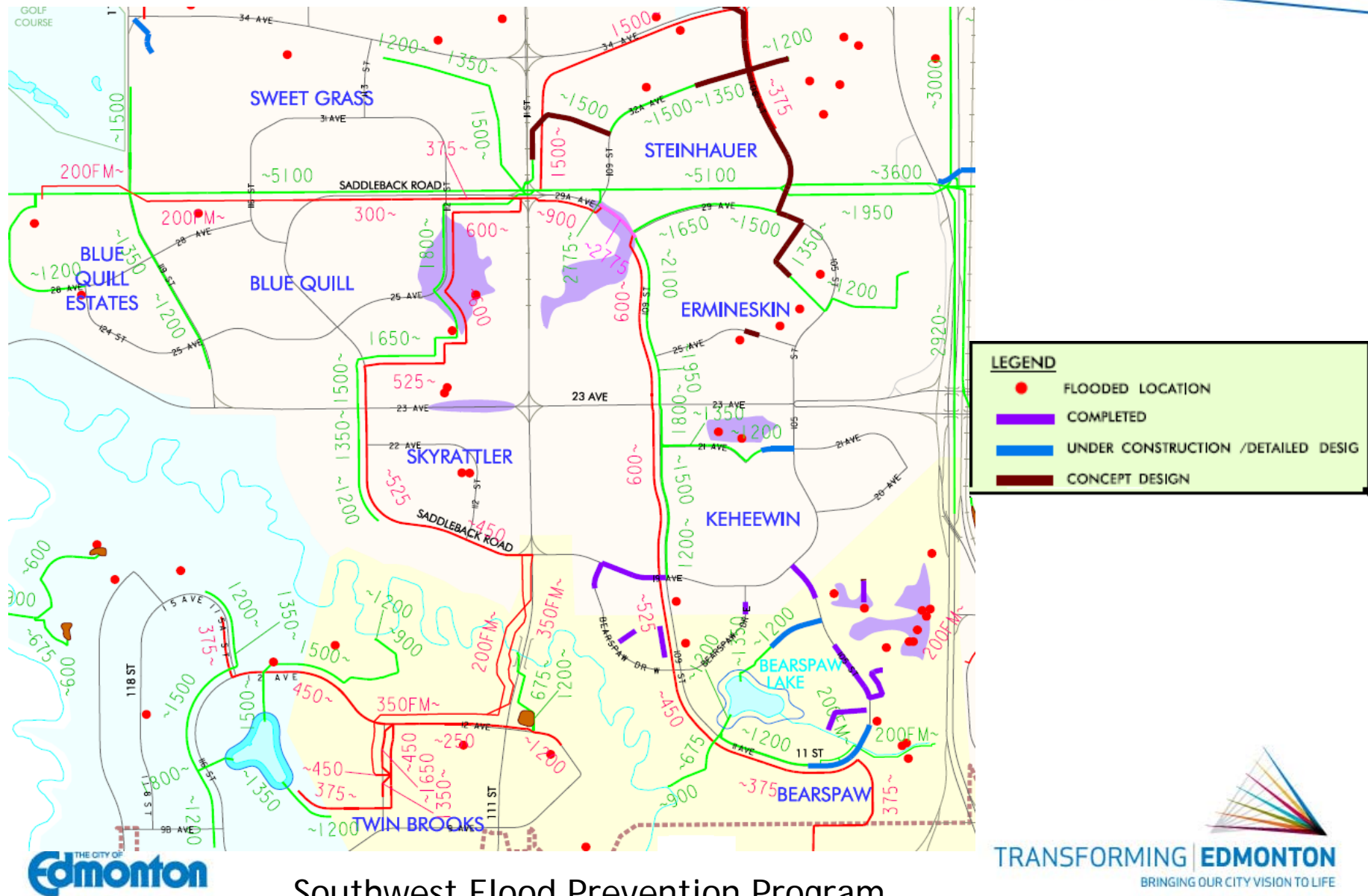
# What has been done in Southwest



## Southwest Flood Prevention Program



# What has been done in Southwest



Southwest Flood Prevention Program



# Next Steps

- Further evaluation and assessments
  - Explore additional local area improvement opportunities
- Develop options and costing
- An Expanded Flood Protection Program will be developed and recommended to the City Council for approval.





# **flood***proof*

## **Flood Prevention Program**



# Consists of ...

- Home Check up Program
  - free to all residents
  - single and multi family program
- Website information -  
[www.edmonton.ca/floodprevention](http://www.edmonton.ca/floodprevention)
- Print materials - Homeowner's Guide to Flood Prevention, Flood Prevention tips for Homeowners etc.



## Also ...

- Community presentations - sump pumps and backflow valves ( NAIT)
- Backflow valve reimbursement program
- Follow- up in neighbourhoods where flood prevention sewer upgrades are done



# Provincial Disaster Recovery Program

- The City of Edmonton's application to the Alberta Emergency Management Agency for a Disaster Recovery Program for flooding events that occurred on July 12, 15 and 18 has been approved.
- Homeowners affected by the flooding will be able to apply to the Province for financial assistance for uninsurable losses.
- Registration centres will be open Oct. 15-17 at City Hall and the Mill Woods Recreation Centre from 9 a.m. to 7 p.m.
- The application deadline is Jan. 10, 2013. Applications can be filled out at the registration centres.
- If you are unable to attend a registration centre, applications are available at <http://aema.alberta.ca/disaster-recovery-programs.cfm> or by calling 1-888-671-1111.



# Discussion and Feedback

Clarifying Questions?



Issues, comments, concerns?



Additional information needs?