

# Drainage Services Flood Prevention Program

---

## Pleasantview Community Consultation



# Flooding in Edmonton

- Recurring problem in many areas
- Causes disruptions; cost, time and money
- Flood prevention top priority
- Flood prevention program goals:
  - Find primary causes
  - Identify options
  - Work with communities/other stakeholders to implement viable solutions that improve flood prevention



# Actions Since the Flood

- Emergency response in July
- Homeowner subsidy program for backwater valves: \$3M committed to date
- Public meetings in Sept./04
- Engineering studies of high risk neighbourhoods completed Feb./05



# Actions Since the Flood

- **Commitment to public consultation and education**
  - Share knowledge and information
  - Stay in touch through regular communications
  - Consult the community before taking further action
  - Reflect community needs and preferences in the action plan



# Today's Meeting

1. Share engineering findings
2. Lay out various options
3. Get community input and feedback to help define best outcomes for homeowners and City

**No final decisions tonight**

# After Today's Meeting

1. Summarize and share input
2. Incorporate input into action plan recommendations
3. Come back to the community to discuss plan and get feedback
4. Report progress

Consultation will continue as required



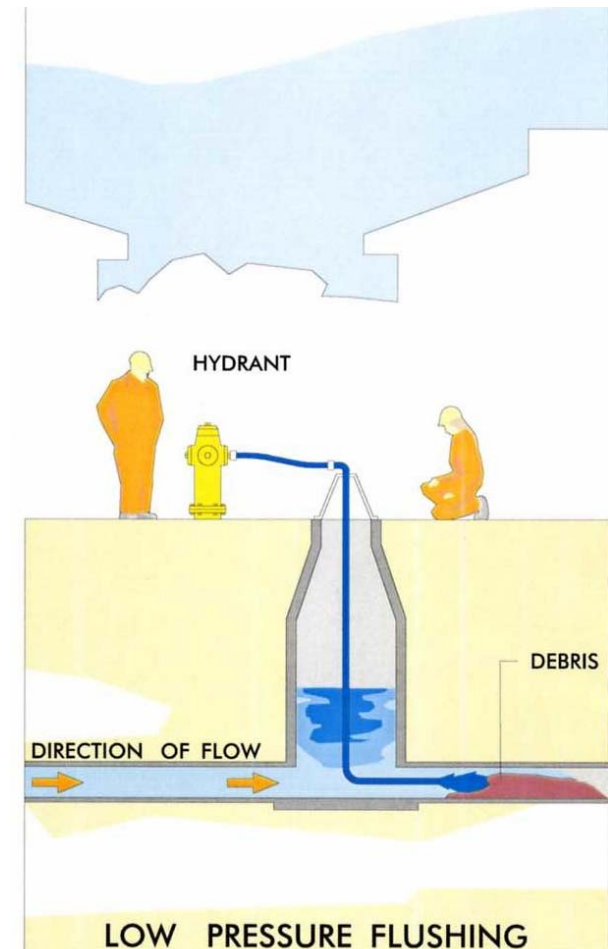
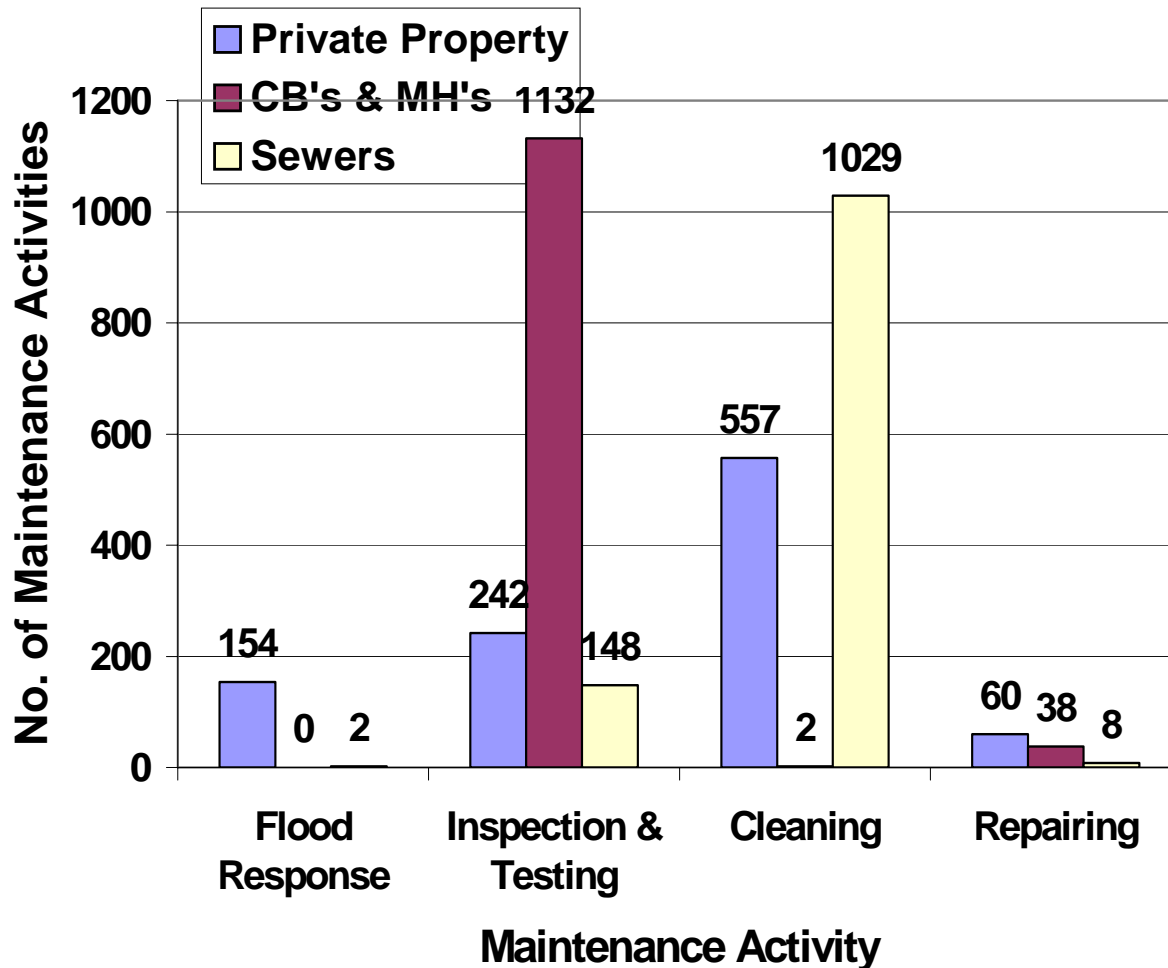
# July Flood Impact

- 144 homes flooded in 2004 floods
- 87 homes flooded before 2004
- 878 homes in neighbourhood

# Pleasantview Findings

- **Water volume exceeded combined sewer capacity**
- **Stormwater got into combined system:**
  - Street catchbasins
  - Roof downspouts
  - Weeping tile connected to home's sanitary sewer
  - Manhole covers
- **Neighbourhood has natural low area where surface water flows**
- **No evidence of major blockage in storm or sanitary sewer pipes**

# Maintenance Activities (2000-2004)





# Pleasantview Findings

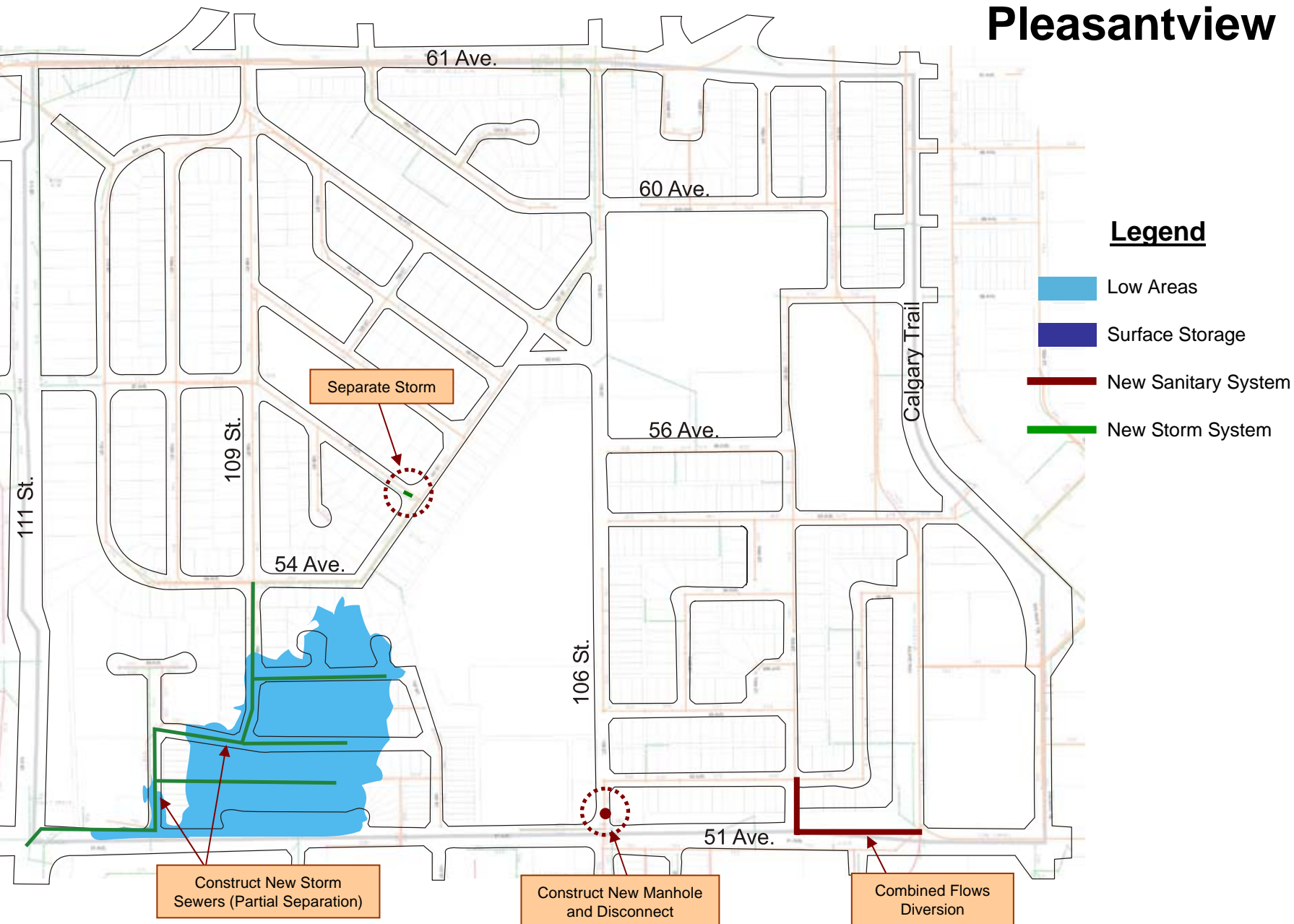
- **Common characteristics of flooded homes**
  - 81% of flooding was due to sewer backup
  - 18% had landscaping or lot grading that caused water to drain toward the house
  - Many houses had downspouts discharging too close to the home
  - Less than 10% had backwater valves or sump pumps

The image features a vertical banner on the left side with the text "City of Edmonton" in a stylized font. The background of the banner shows a modern building with a glass facade and a large, triangular, metallic structure on top, situated behind a body of water. The main content area has a solid blue background.

# What Does it Mean?

- Better flood prevention requires joint effort from homeowners and City
- System improvements needed; involves significant time and expense
- Cooperation needed from others who manage or own private property
- Support needed from community to move ahead

# Pleasantview



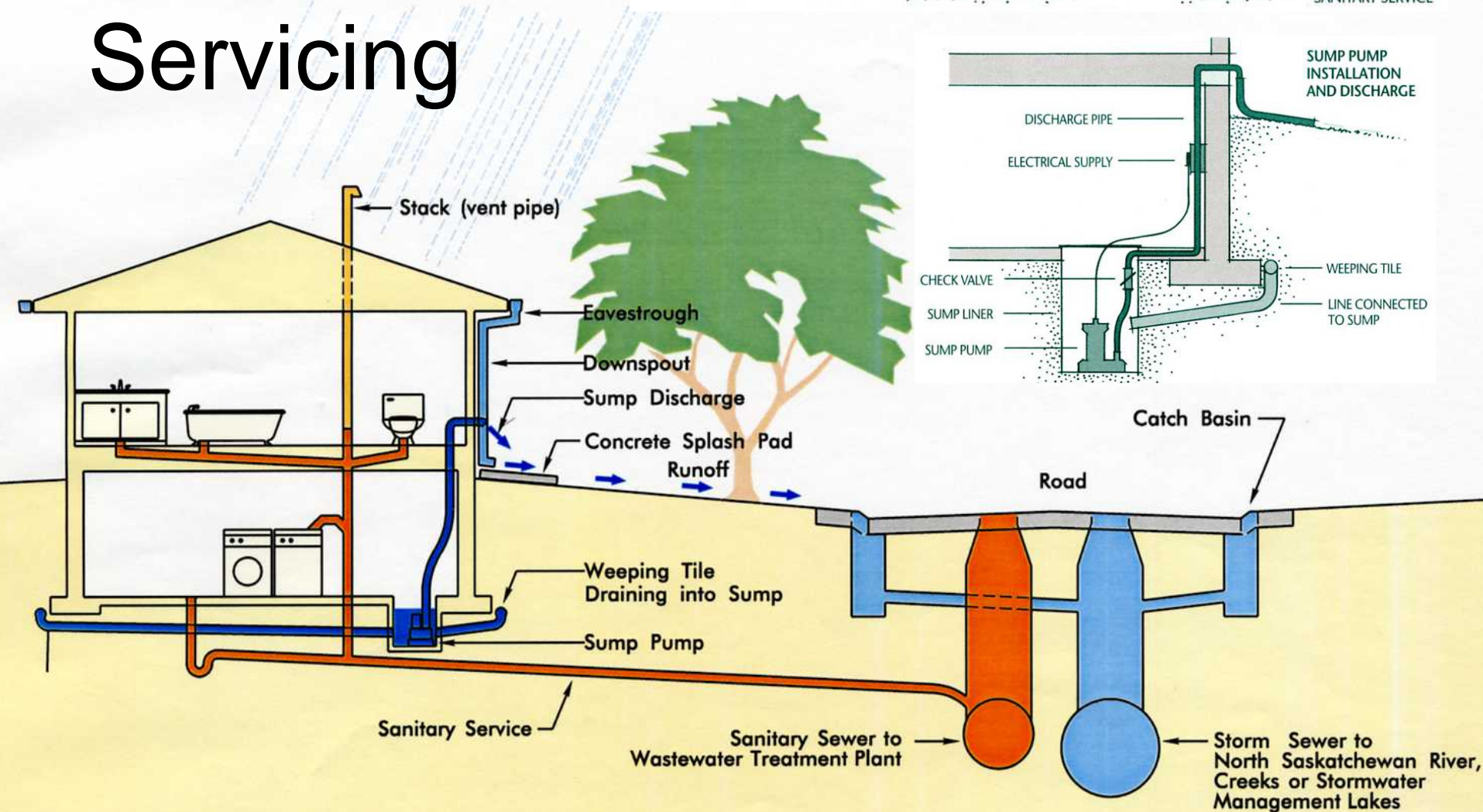
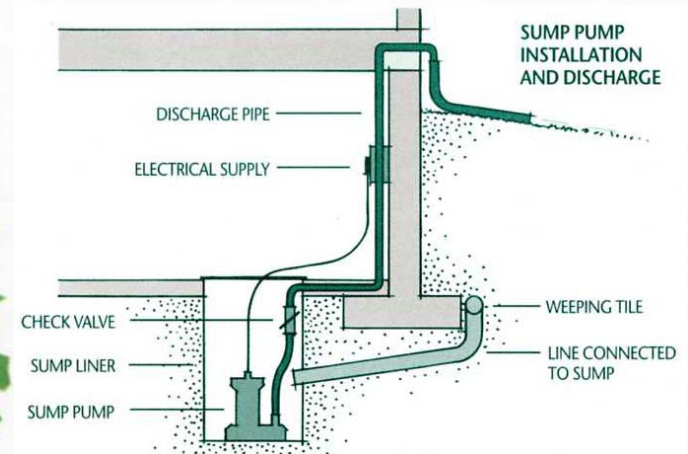
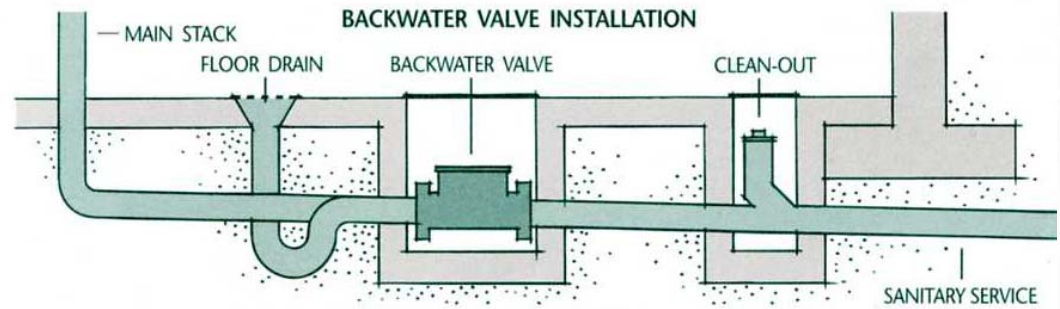
# Improvement Options

Separation of storm flows in natural low area	\$2,400,000
Combined sewer diversion at 106 St. and 51 Ave	\$500,000
Plug vents, seal manhole covers and install backwater valves (in separated area)	\$198,000
Total	\$3,098,000

# Homeowner Options

- Improve lot grading to get surface water away from house
- Install/maintain adequate eavestroughs: 6 inch wide trough recommended
- Set in place downspouts: 1.5 meter extensions
- Disconnect downspouts (in separated area)
- Install backwater prevention valve
- Install sump pump

# Typical New Home Servicing





# What are the Benefits?

- Quicker overall drainage
- Less pooling of water on the surface
- Less likelihood of basement flooding
- Less property damage
- Savings of time, money and inconvenience

The logo for the City of Edmonton is positioned vertically on the left side of the slide. It features a photograph of a modern building with a distinctive triangular roof structure, situated behind a body of water. The text "City of Edmonton" is written vertically in a serif font, with "City" and "Edmonton" in a larger size than "of".

# Discussion and Feedback

Clarifying Questions?



Issues, comments, concerns?



Ideas and suggestions?



Preferred options?