

Drainage Services Flood Prevention Program

Malmo Plains Community Consultation

The logo for the City of Edmonton, featuring a stylized blue and white geometric design of a city skyline and the words "City of Edmonton" in a serif font, oriented vertically on the left side of the slide.

Flooding in Edmonton

- Recurring problem in many areas
- Causes disruptions; cost, time and money
- Flood prevention top priority
- Flood prevention program goals:
 - Find primary causes
 - Identify options
 - Work with communities/other stakeholders to implement viable solutions that improve flood prevention



Actions Since the Flood

- Emergency response in July
- Homeowner subsidy program for backwater valves: \$3M committed to date
- Public meetings in Sept./04
- Engineering studies of high risk neighbourhoods completed Feb./05



Actions Since the Flood

- **Commitment to public consultation and education**
 - Share knowledge and information
 - Stay in touch through regular communications
 - Consult the community before taking further action
 - Reflect community needs and preferences in the action plan



Today's Meeting

1. Share engineering findings
2. Lay out various options
3. Get community input and feedback to help define best outcomes for homeowners and City

No final decisions tonight

After Today's Meeting

1. Summarize and share input
2. Incorporate input into action plan recommendations
3. Come back to the community to discuss plan and get feedback
4. Report progress

Consultation will continue as required



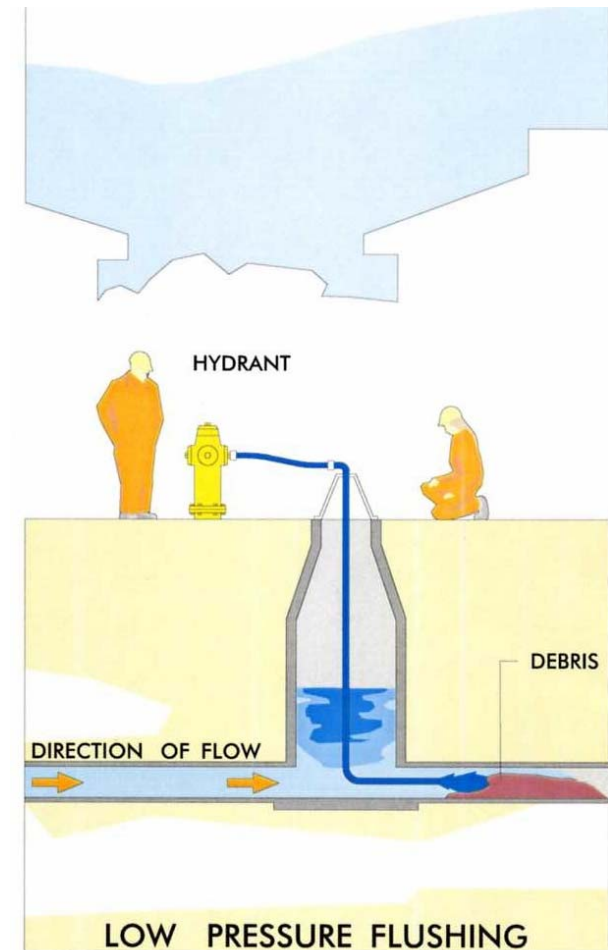
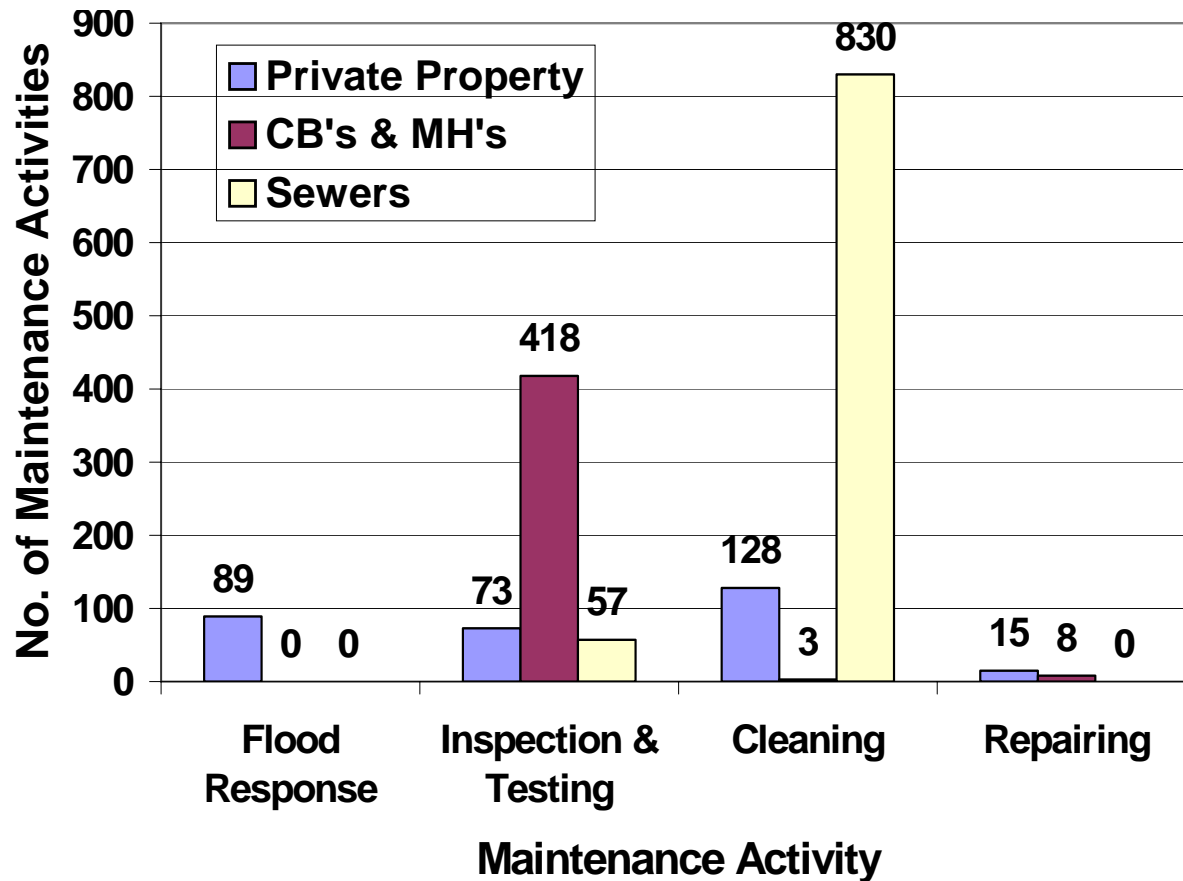
July Flood Impact

- 77 homes flooded in 2004 floods
- 50 homes flooded before 2004
- 632 homes in neighbourhood

Malmo Plains Findings

- **Water volume exceeded storm sewer capacity**
- **Stormwater got into sanitary system:**
 - Weeping tile connected to home's sanitary sewer
 - Manhole covers
- **Neighbourhood has natural low area where surface water flows**
- **No evidence of major blockage in storm or sanitary sewer pipes**

Maintenance Activities (2000-2004)





Malmo Plains Findings

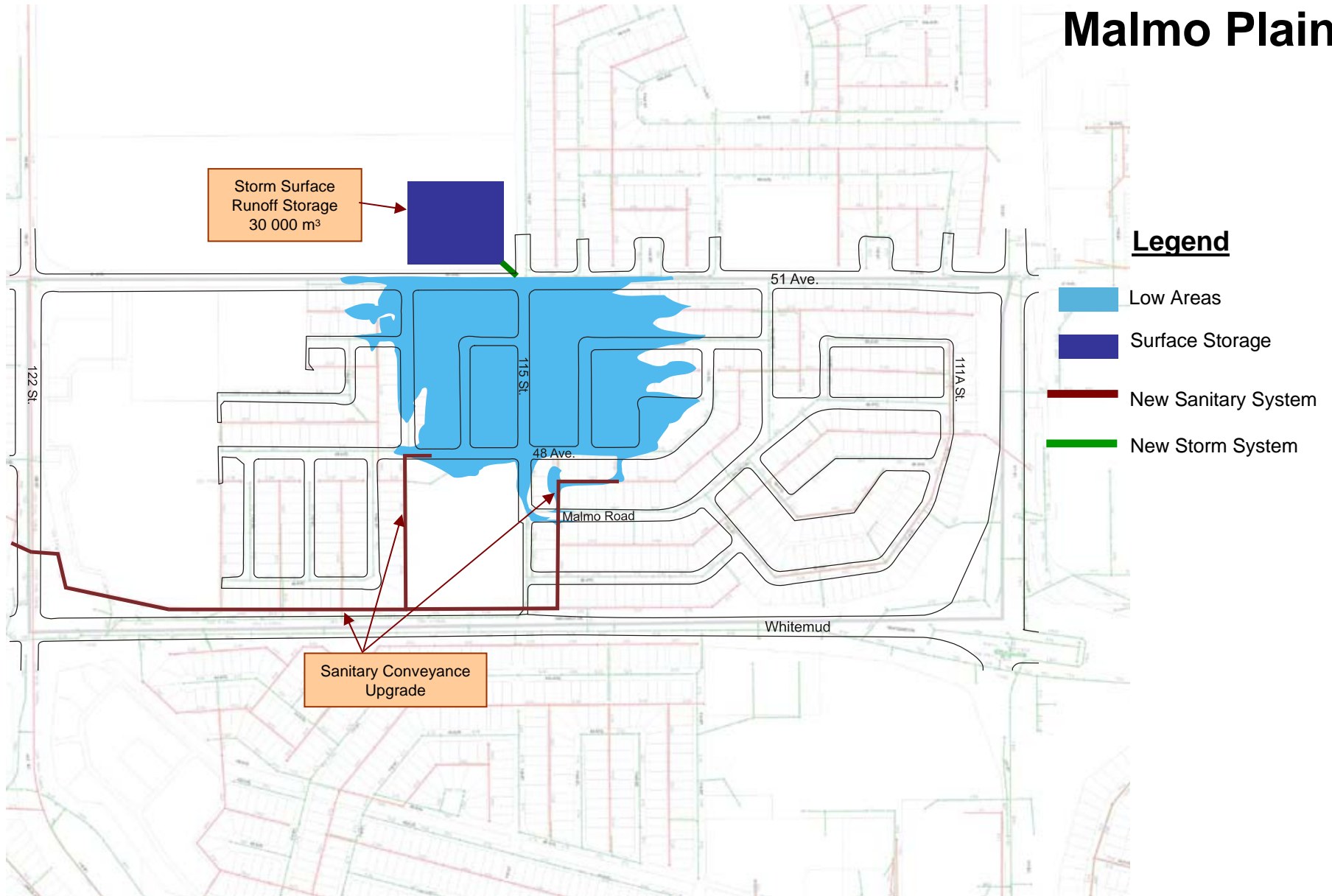
- **Common characteristics of flooded homes**
 - 78% of flooding was due to sewer backup
 - 32% had landscaping or lot grading that caused water to drain toward the house
 - Many houses had downspouts discharging too close to the home
 - Less than 15% had backwater valves or sump pumps



What Does it Mean?

- Better flood prevention requires joint effort from homeowners and City
- System improvements needed; involves significant time and expense
- Cooperation needed from others who manage or own private property
- Support needed from community to move ahead

Malmo Plains



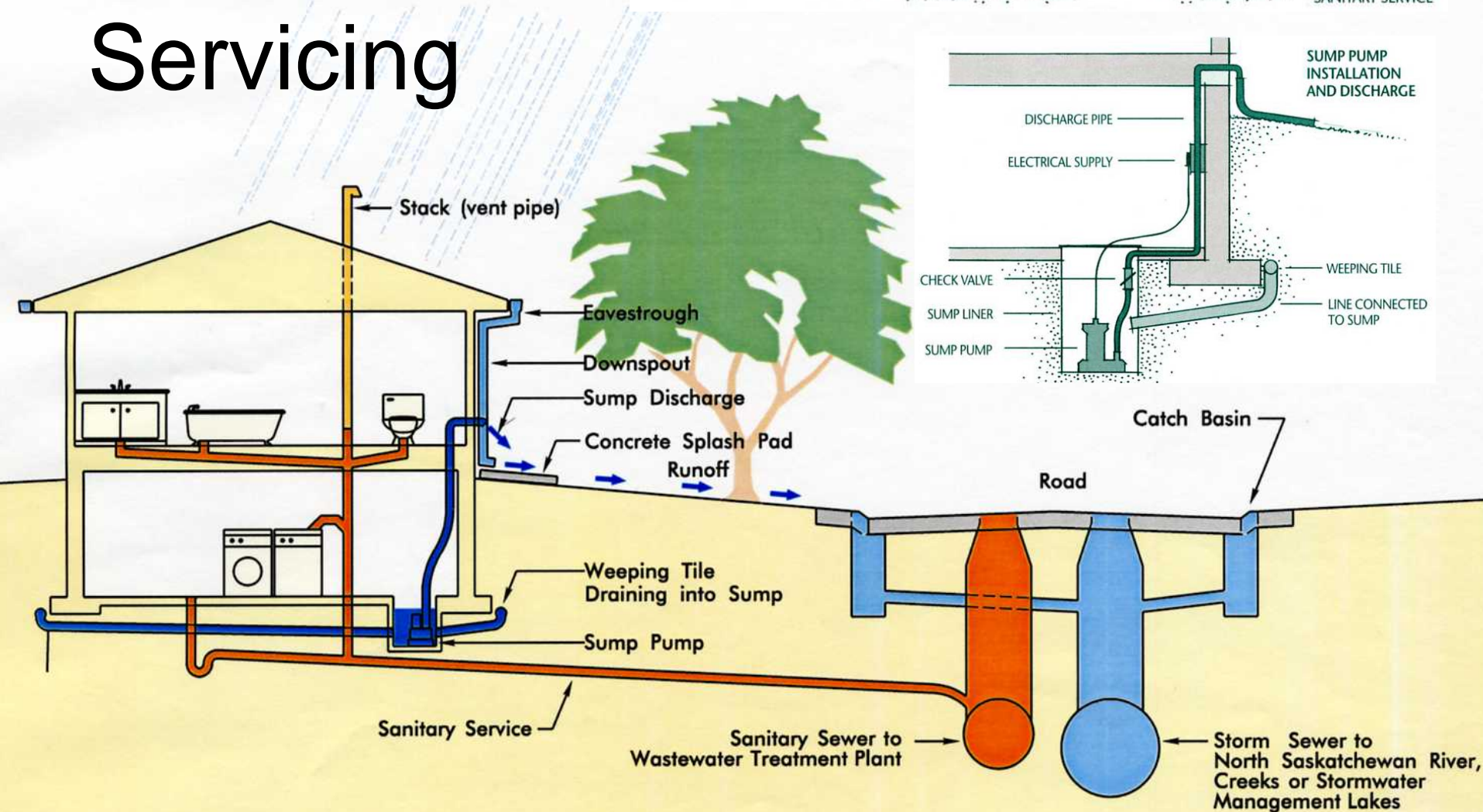
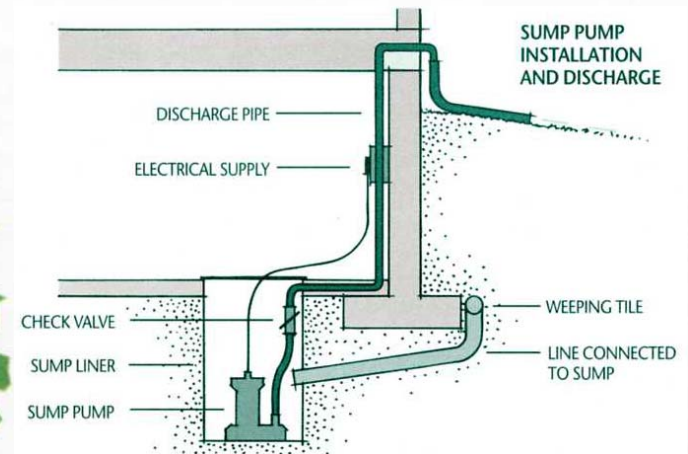
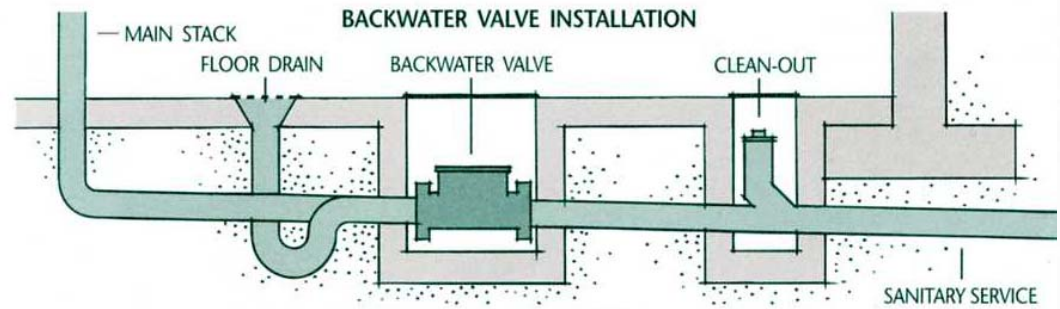
Improvement Options

Upgrade some sanitary sewers	\$2,500,000
Build stormwater storage pond at University Farm	\$800,000
Plug vents, seal manhole covers and install backwater valves	\$323,000
Total	\$3,623,000

Homeowner Options

- Improve lot grading to get surface water away from house
- Install/maintain adequate eavestroughs: 6 inch wide trough recommended
- Set in place downspouts: 1.5 metre extensions
- Install backwater prevention valve
- Install sump pump

Typical New Home Servicing



The logo for the City of Edmonton, featuring a stylized blue and white geometric design of a city skyline and the words "City of Edmonton" in a serif font, oriented vertically on the left side of the slide.

What are the Benefits?

- Quicker overall drainage
- Less pooling of water on the surface
- Less likelihood of basement flooding
- Less property damage
- Savings of time, money and inconvenience

Discussion and Feedback

Clarifying Questions?



Issues, comments, concerns?



Ideas and suggestions?



Preferred options?