

Malmo Plains Sanitary Relief Sewer

1.0 Background Information

During the flooding investigation studies for South-Central Edmonton, Malmo Plains was identified as one of the Priority #1 Neighborhoods for sanitary servicing upgrades.

Infiltration/inflow was determined as one of the major causes of sanitary back up and basement flooding experienced during the major storm events in the neighborhood. A sanitary relief sewer is required to increase the capacity of the existing sanitary sewer system to convey flows to the 1,200 mm sanitary trunk along 122 Street. Approximately 1.8 km of sanitary relief sewers are recommended to be added to the system along the following routes:

- **On 51 Avenue from 122 Street to 116 Street**
- **On 116 Street from 51 Avenue to 48 Avenue**
- **On 48 Avenue from 116A Street to the lane east of 115 Street**
- **On 115 Street from 48 Avenue to Malmo Road**
- **On Malmo Road from 115 Street to the lane east of 113A Street**
- **On 113A Street from the lane south of Malmo Road to Malmo Road**

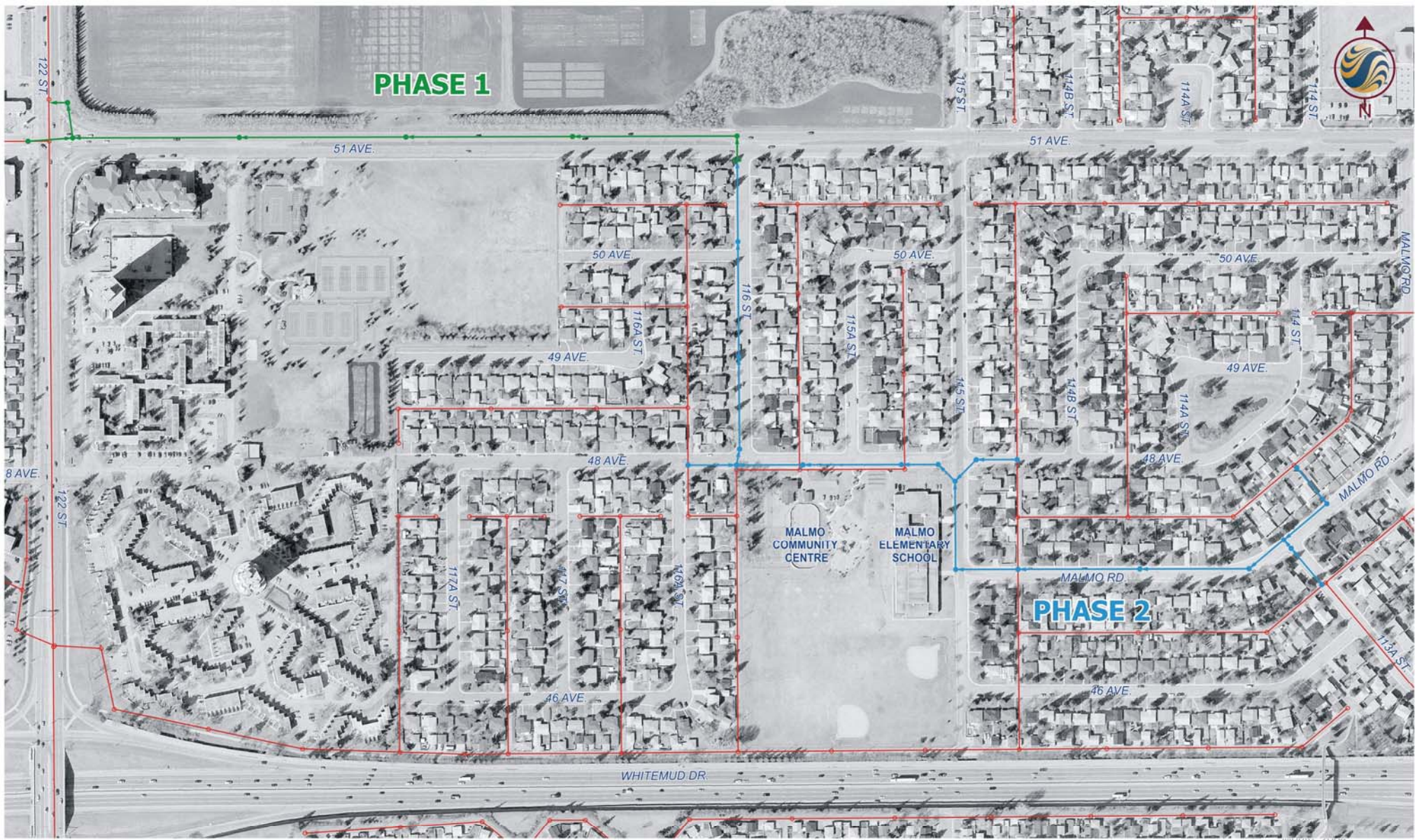


2.0 Preliminary Engineering Design

An overall site plan is presented on the back of this page and the details of the design are as follows:

- ***Phase 1 (2007 Construction)***
 - ***Approximately 645 m installed along 51 Avenue from 116 Street to 122 Street***
 - ***Options for both trenched and trenchless sewer construction***
- ***Phase 2 (2008 Construction)***
 - ***Approximately 1.2 km installed along 116 Street, 48 Avenue, 115 Street, Malmo Road and 113A Street***





Legend

- EXISTING SANITARY SEWER
- PROPOSED SANITARY SEWER PHASE 1 (2007 CONSTRUCTION)
- PROPOSED SANITARY SEWER PHASE 2 (2008 CONSTRUCTION)



Stantec



**Malmo Plains
Sanitary Relief Sewer
Location Plan**