

Lynnwood

Community Meeting

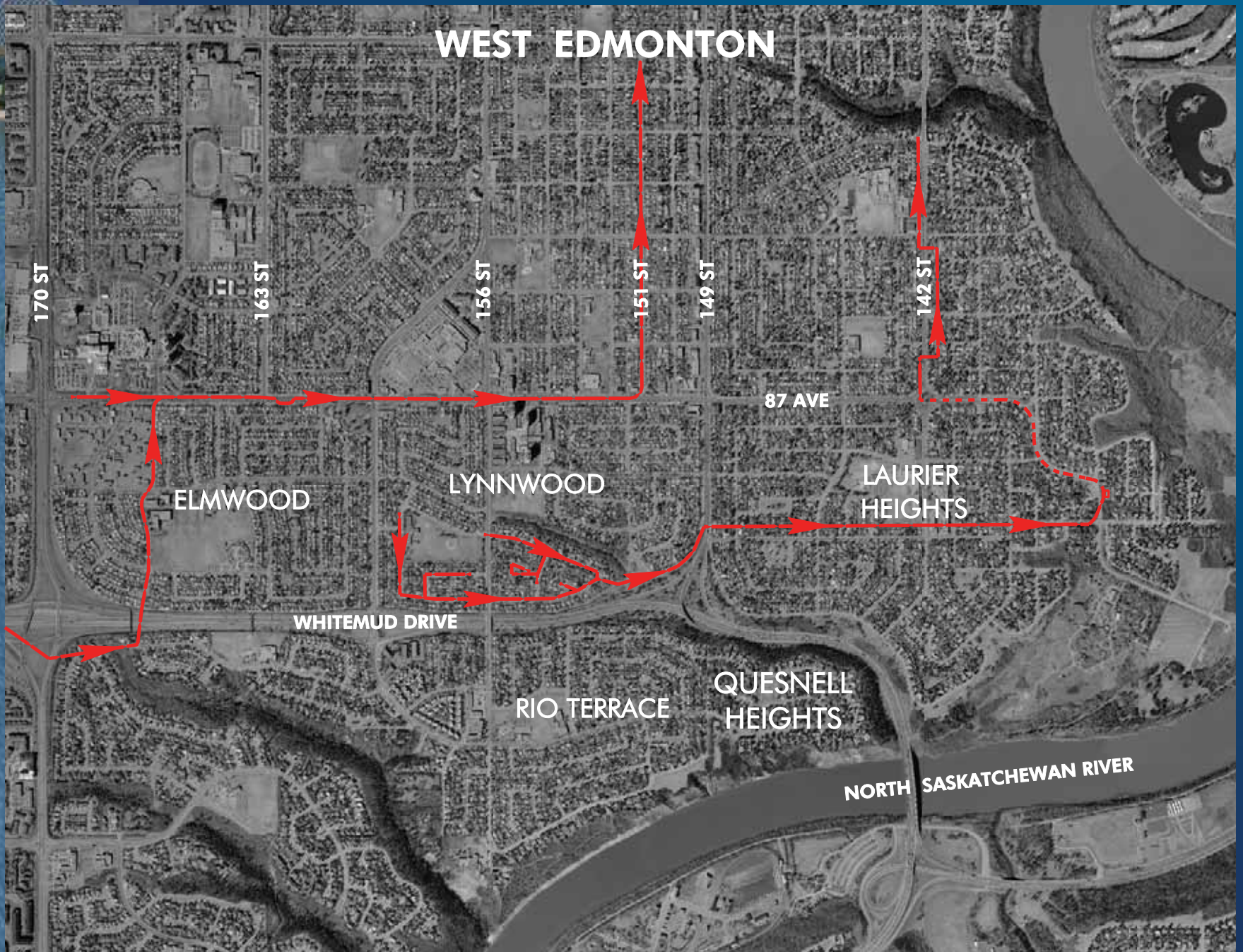
July 4, 2006.

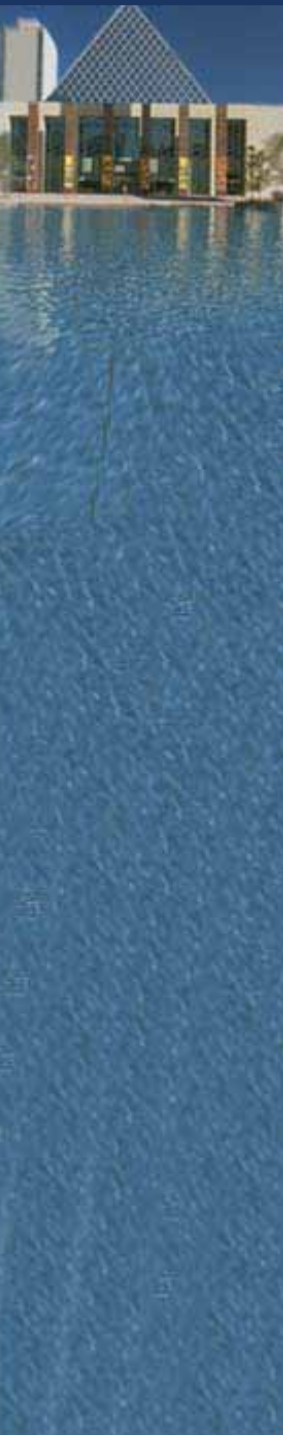


Background

- **June 15, 2006 rainstorm 40-50mm**
- **46 homes in Lynnwood**
- **July 11, 2004 major rainstorm 150 mm**
- **237 homes in Lynnwood**
- **Some homes sanitary backup**
- **Some homes flooded by surface water (seepage)**

WEST EDMONTON





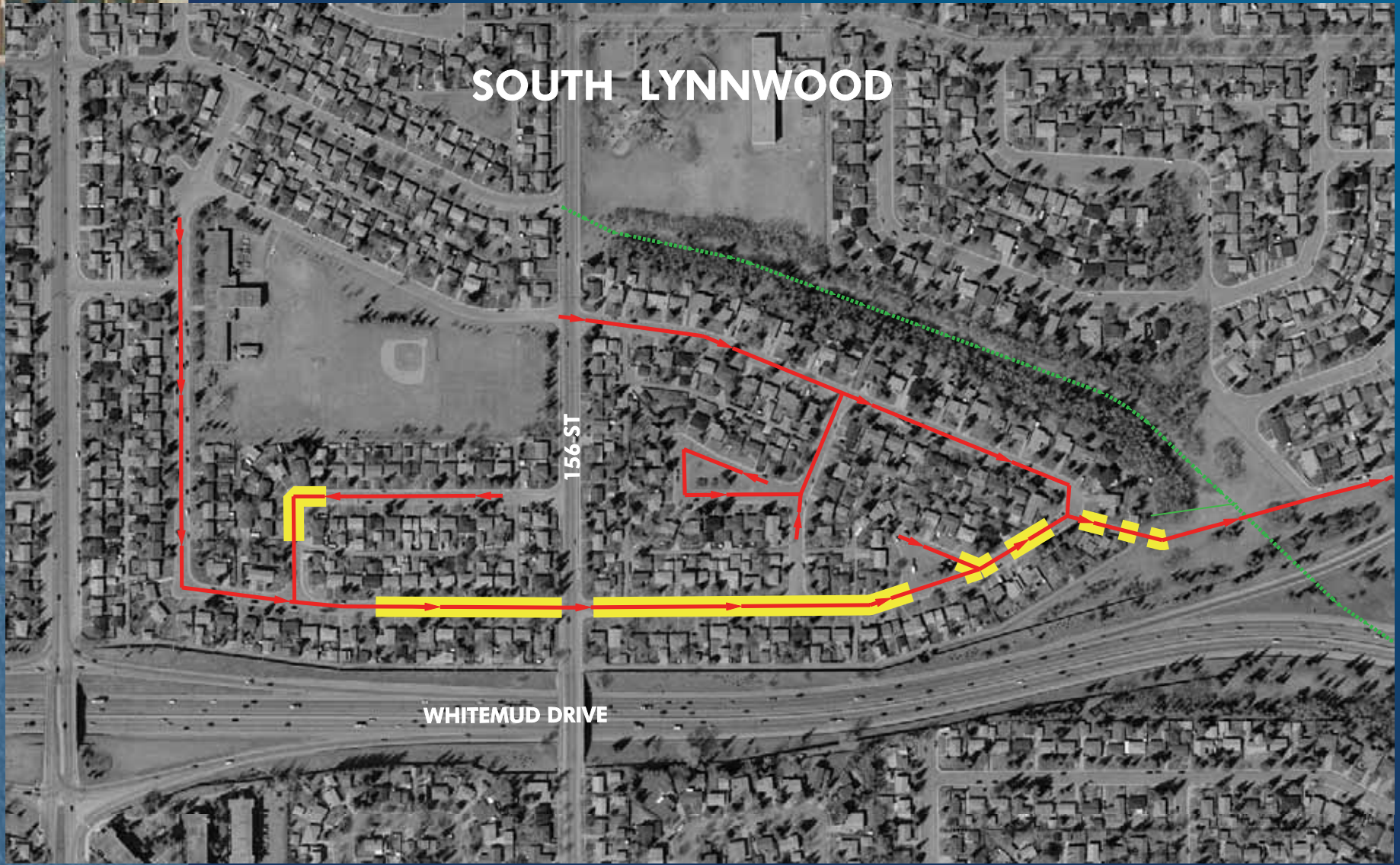
Assessment of the system

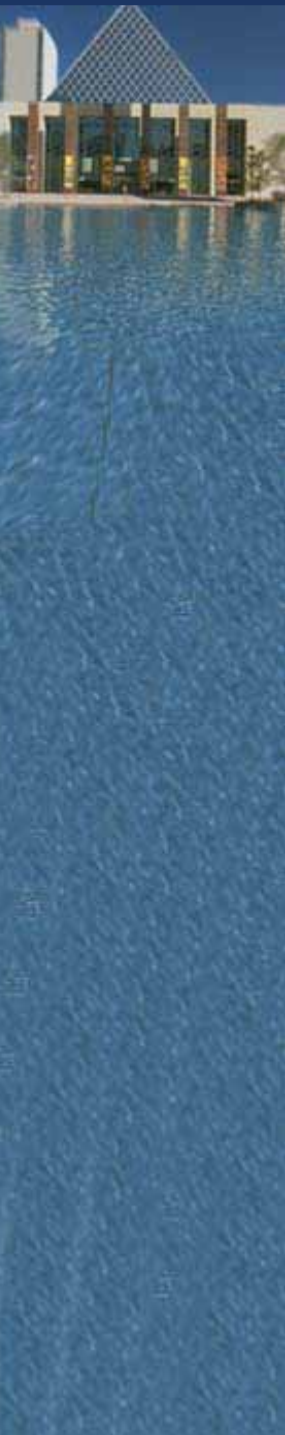
- **cctv inspection of sewer lines & system analysis**
- **Sanitary pipe east across ravine had excessive roots and grease**
- **Storm drain into ravine had excessive roots**
- **Manhole with poor hydraulics**
- **Sanitary system downstream overloaded – evidence of excessive wet weather flow**
- **System flooded to basement level**
- **Roots/grease put waterlevels over the top**

SOUTH LYNNWOOD

156 ST

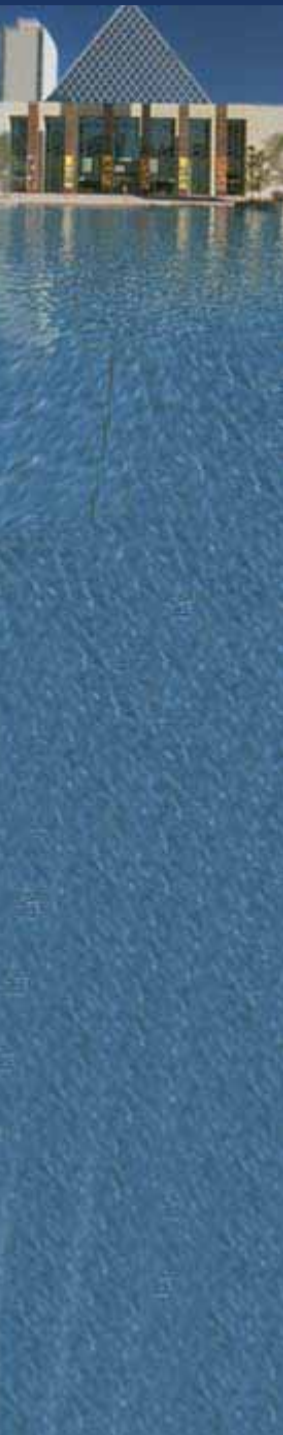
WHITEMUD DRIVE





Action since June 15th

- **cctv inspection of sanitary and storm sewer lines**
- **sewer lines cleaned out**
- **85% of affected homes have been inspected by Drainage technicians**
- **system analysis completed**



Future plans

Immediately.....

- **Continue cctv of remaining sewer lines in the vicinity and clean out as needed**
- **Home service investigation as requested**
- **Fix the manhole hydraulics**

Major upgrades...

- **Construct improved Lynnwood ravine outlet drain**
- **Construct major Lynnwood system upgrade**

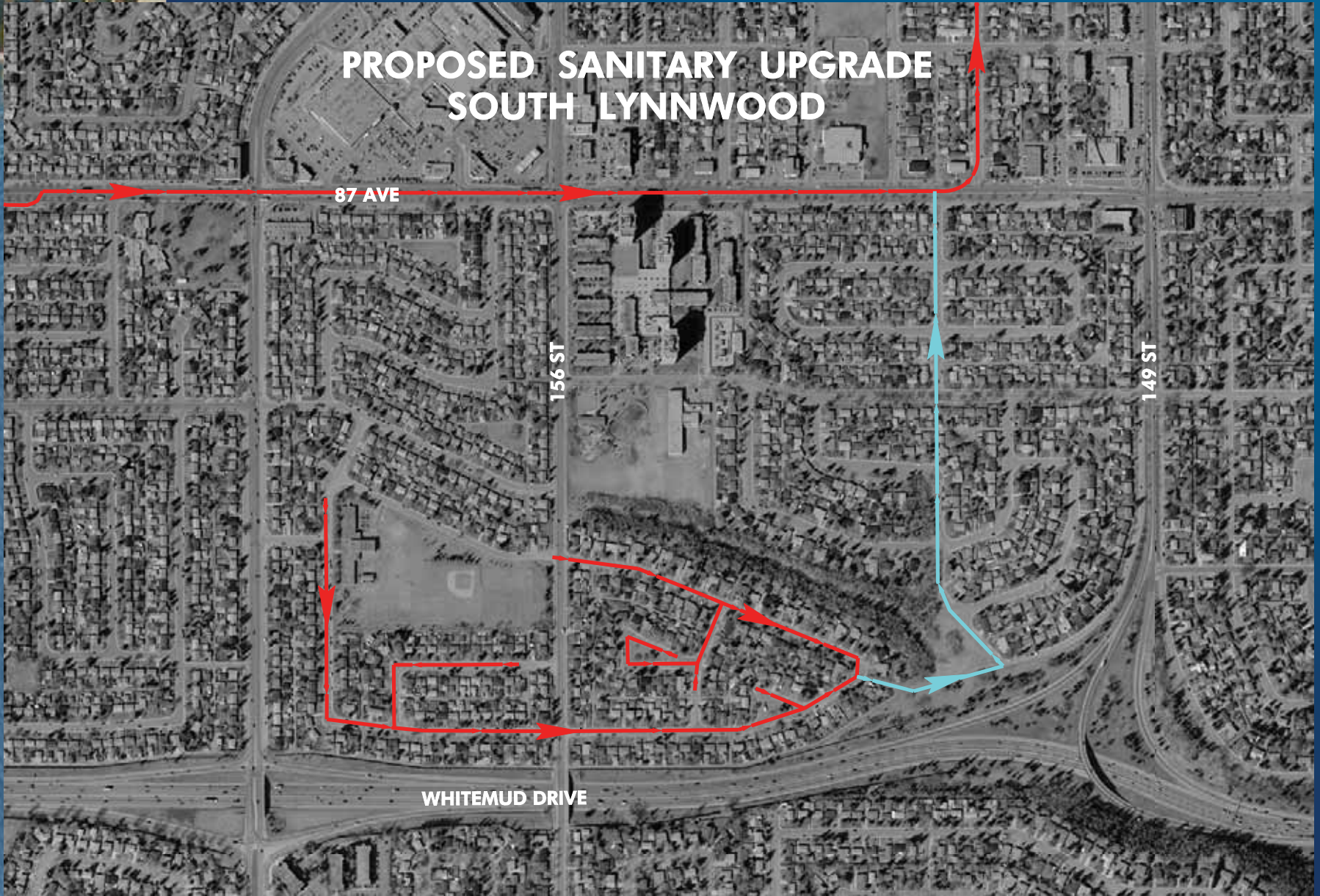
PROPOSED SANITARY UPGRADE SOUTH LYNNWOOD

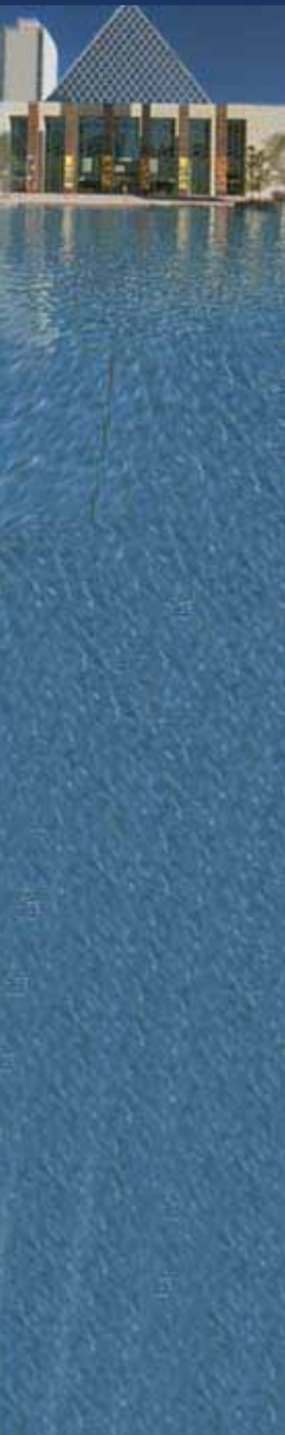
87 AVE

156 ST

149 ST

WHITEMUD DRIVE





Homeowner actions

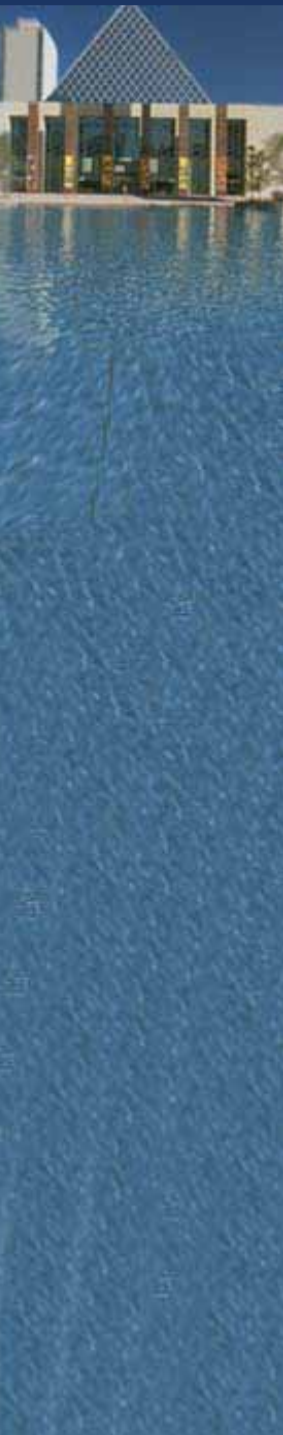
Grease

- **Grease was found to be a significant impediment in the sanitary sewer line**
- **Grease in the sanitary sewer line comes from homes**
- **Throw grease in the garbage, not down the sink or toilet.**

The image features a vertical banner on the left side. The top portion of the banner shows a photograph of a modern building with a large, triangular, lattice-like roof structure, situated behind a body of water. Below the photograph, the words "City of Edmonton" are written vertically in a large, white, serif font. The background of the entire slide is a solid dark blue.

Action since 2004 flood

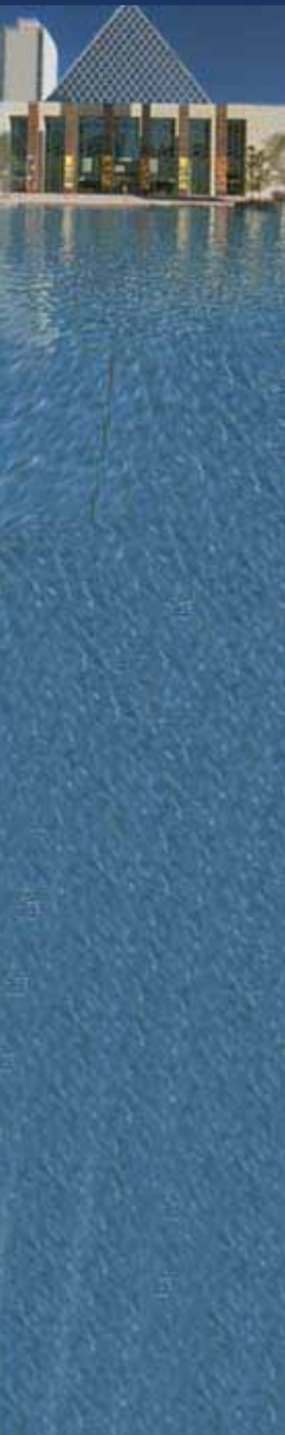
- **Home Checkup Program.**
- **Sump Pump and Backflow Prevention Valve workshops.**
- **Engineering studies underway or completed for 43 at-risk neighbourhoods**
- **Final engineering designs underway for priority projects**
- **Complete flood prevention program to be presented to City Council July 5**
- **Public Hearing September 26 for final decision**



Homeowner actions

Lot Grading

- **50% of inspected homes have poor lot grading**
Some homes flooded by surface water alone
- **Lot grading moves surface water away from the house**
- **Lot grading keeps surface water out of the house weeping tile and prevents sanitary system backup**
- **Maintain eaves troughs and downspouts in conjunction with good lot grading**



Homeowner actions

Backflow Prevention Valve

- **Install a backflow prevention valve on your home sewer line**
- **Hire a plumber to install the valve correctly**
- **Follow the backflow prevention valve maintenance schedule**



Questions

For more information contact:

Douwe Vanderwel, 496-5553

douwe.vanderwel@edmonton.ca

Derek Melmoth, 496-5662

derek.melmooth@edmonton.ca