

# Drainage Services Flood Prevention Program

---

## Lendrum Place Community Consultation



# Flooding in Edmonton

- Recurring problem in many areas
- Causes disruptions; cost, time and money
- Flood prevention top priority
- Flood prevention program goals:
  - Find primary causes
  - Identify options
  - Work with communities/other stakeholders to implement viable solutions that improve flood prevention



# Actions Since the Flood

- Emergency response in July
- Homeowner subsidy program for backwater valves: \$3M committed to date
- Public meetings in Sept./04
- Engineering studies of high risk neighbourhoods completed Feb./05



# Actions Since the Flood

- **Commitment to public consultation and education**
  - Share knowledge and information
  - Stay in touch through regular communications
  - Consult the community before taking further action
  - Reflect community needs and preferences in the action plan



# Today's Meeting

1. Share engineering findings
2. Lay out various options
3. Get community input and feedback to help define best outcomes for homeowners and City

**No final decisions tonight**

# After Today's Meeting

1. Summarize and share input
2. Incorporate input into action plan recommendations
3. Come back to the community to discuss plan and get feedback
4. Report progress

Consultation will continue as required



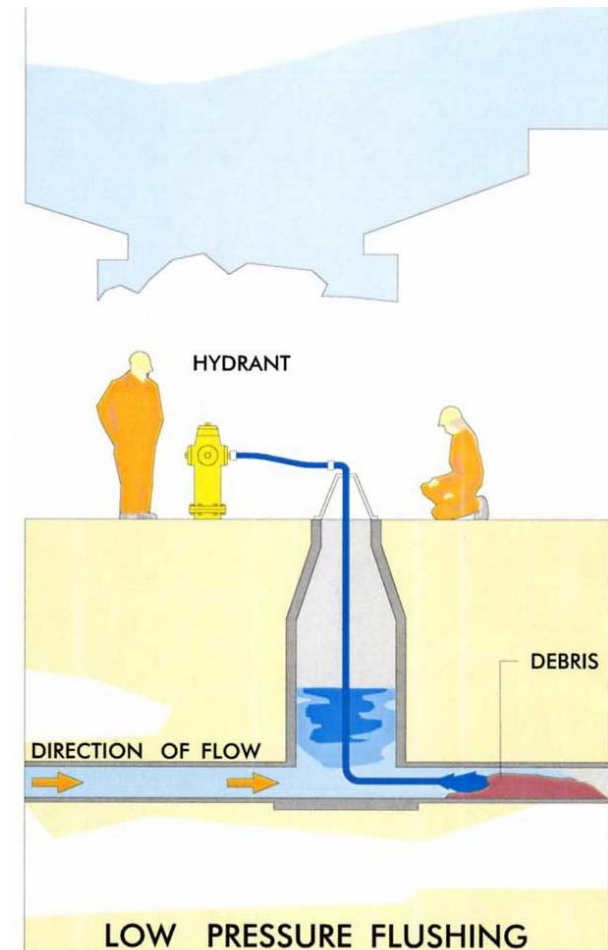
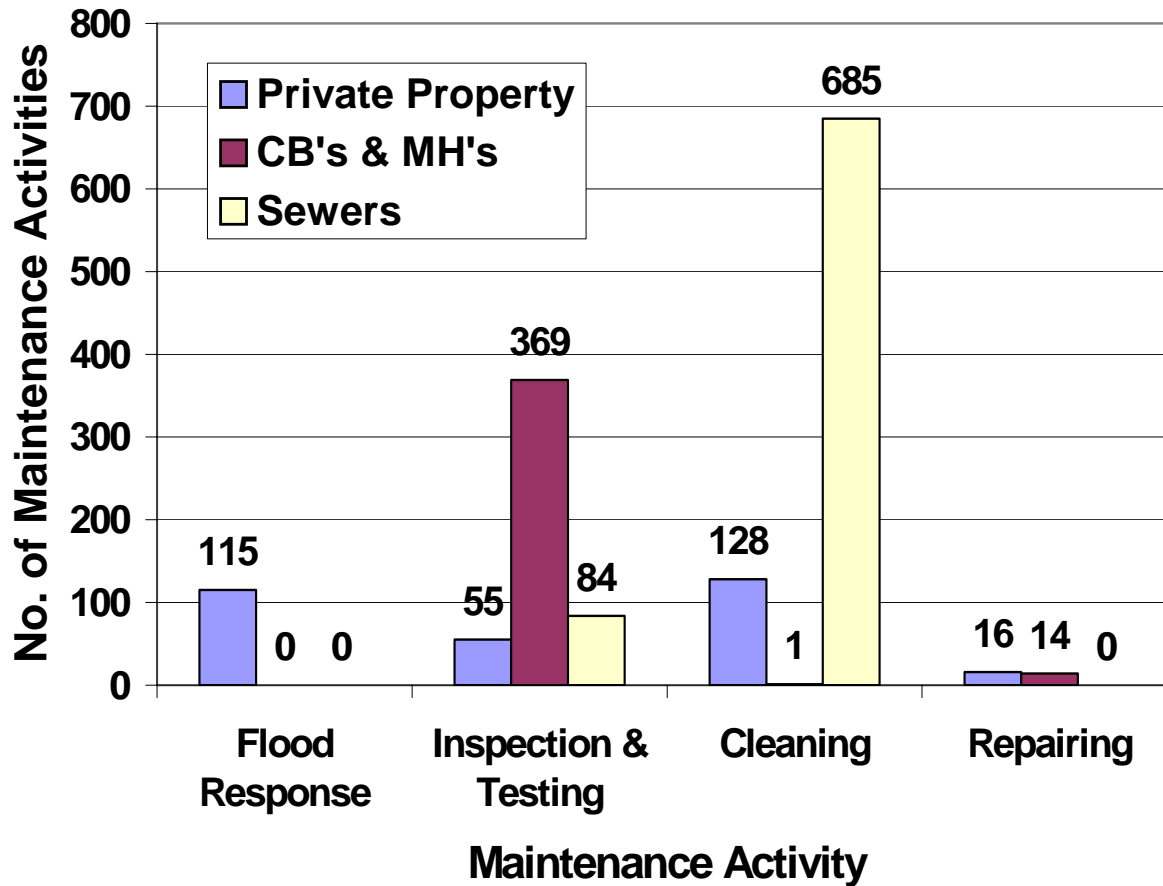
# July Flood Impact

- 86 homes flooded in 2004 floods
- 34 homes flooded before 2004
- 615 homes in neighbourhood

# Lendrum Place Findings

- **Water volume exceeded storm sewer capacity**
- **Stormwater got into sanitary system:**
  - Weeping tile connected to home's sanitary sewer
  - Manhole covers
- **Neighbourhood has natural low area where all surface water flows**
- **Only one incidence of a pipe blockage contributing to basement flooding**

# Maintenance Activities (2000-2004)





# Lendrum Place Findings

- **Common characteristics of flooded homes**
  - 78% of flooding was due to sewer backup
  - 35% had landscaping or lot grading that caused water to drain toward the house
  - Many houses had downspouts discharging too close to the home
  - Less than 10% had backwater valves or sump pumps






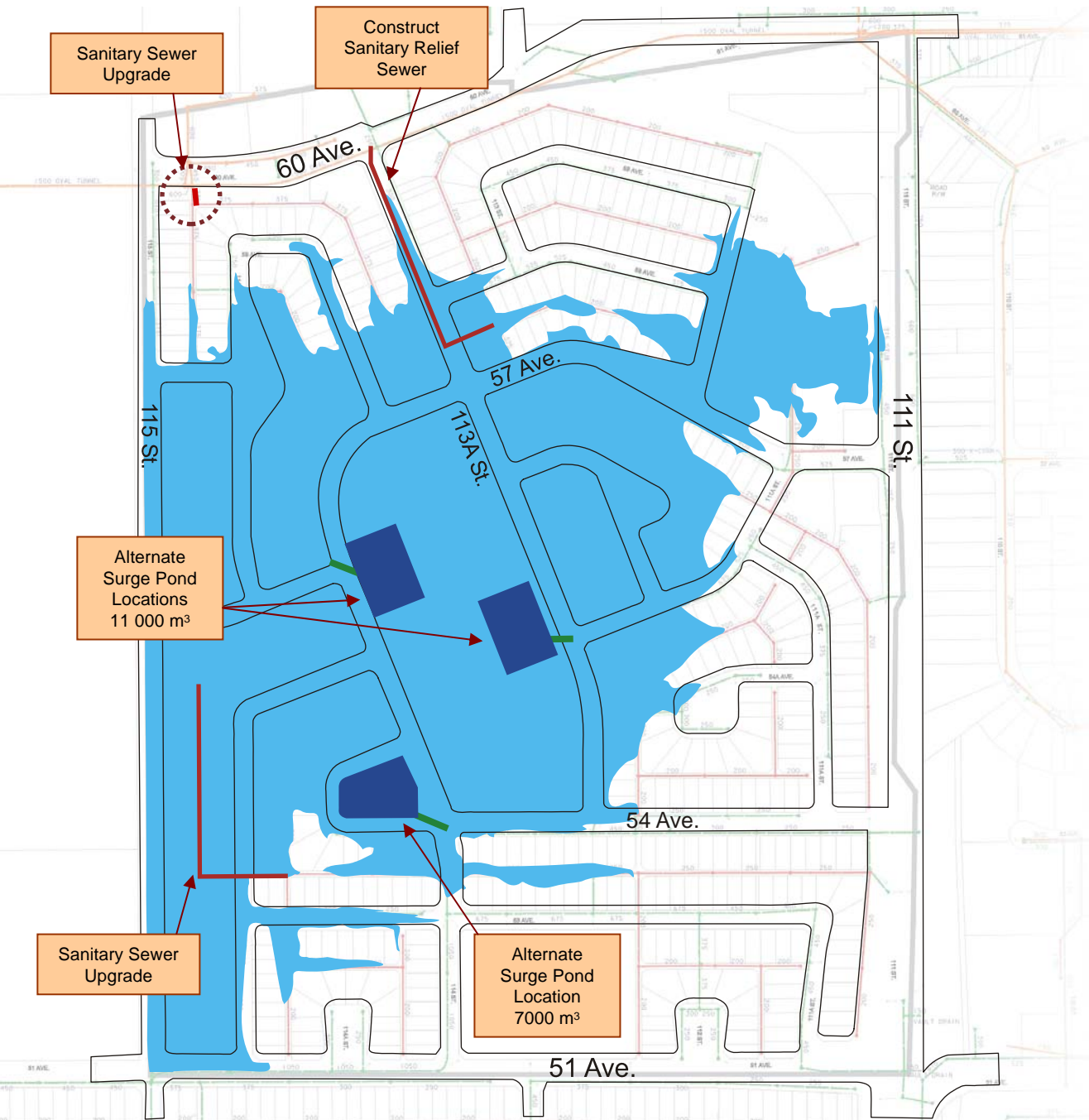
# What Does it Mean?

- Better flood prevention requires joint effort from homeowners and City
- System improvements needed; involves significant time and expense
- Cooperation needed from others who manage or own private property
- Support needed from community to move ahead

# Lendrum Place

## Legend

-  Low Areas
-  Surface Storage
-  New Sanitary System
-  New Storm System



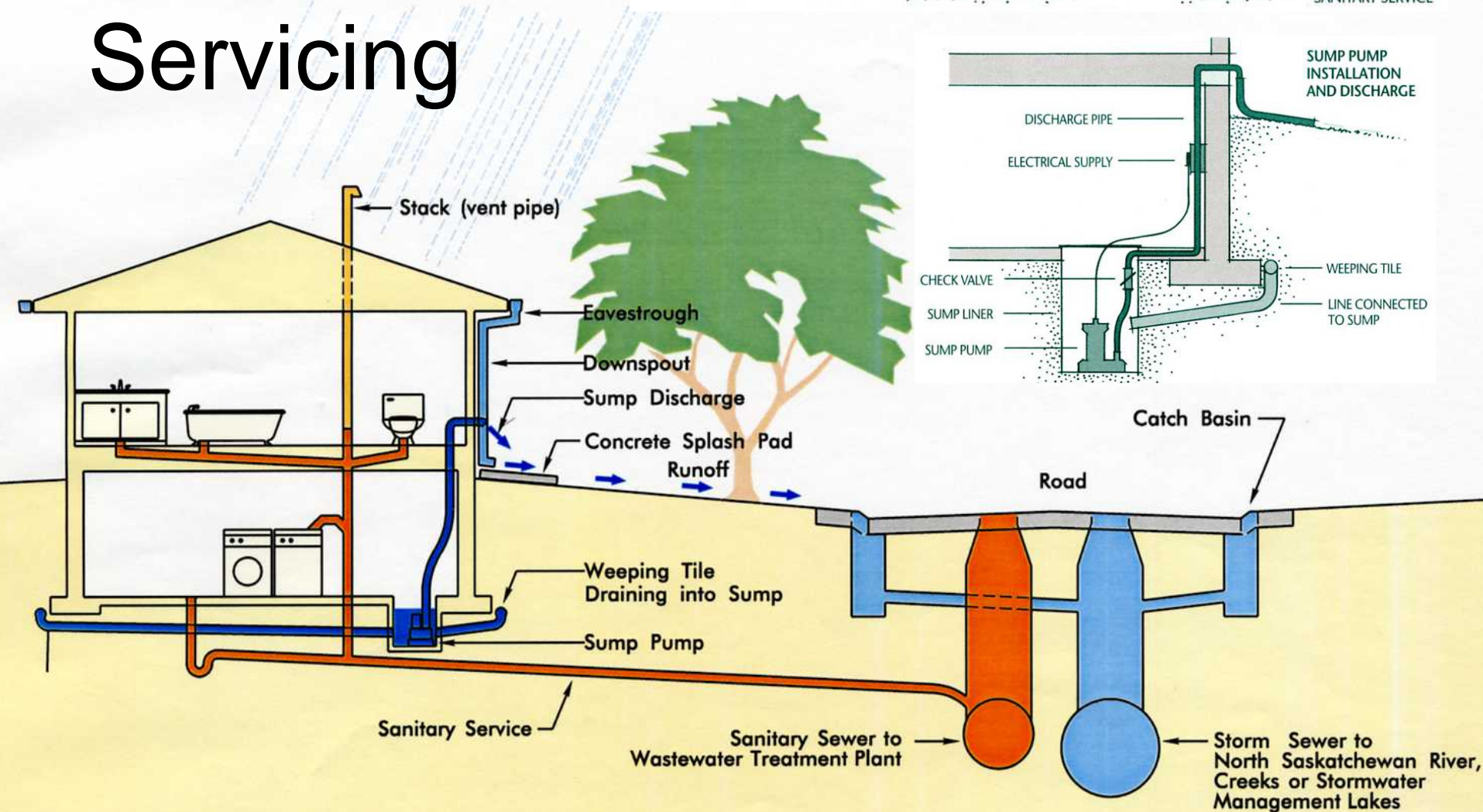
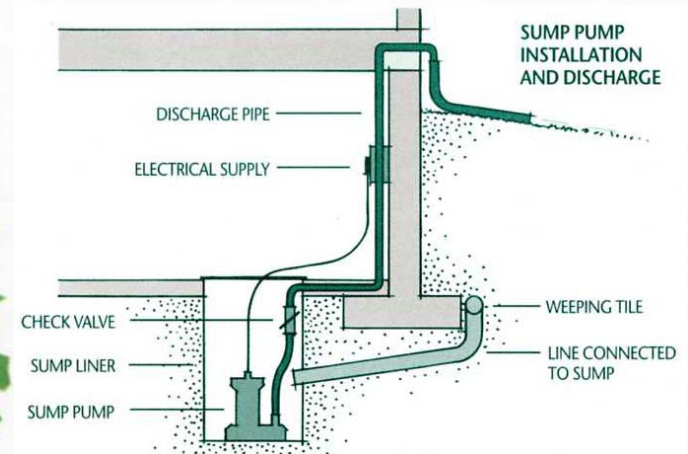
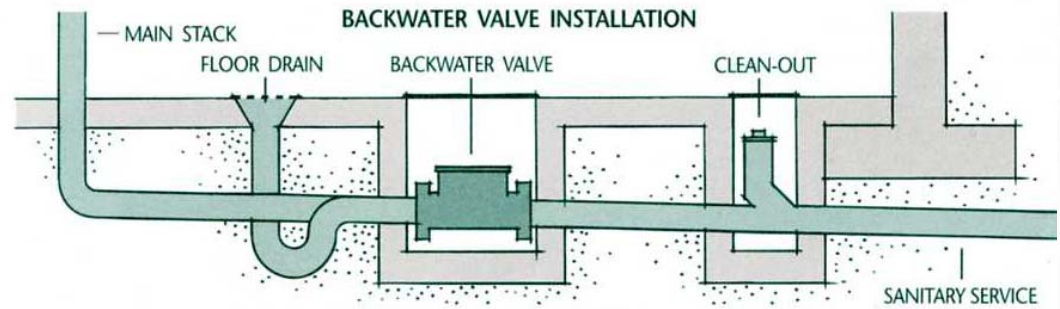
# Improvement Options

Build sanitary relief pipe along 113A St. to 60 Ave.	\$540,000
Build two surge ponds	\$900,000
Do upgrades along lane east of 115 St. to reduce system bottleneck	\$460,000
Plug vents, seal manhole covers and install backwater valves	\$605,000
<u>Total</u>	<u>\$2,505,000</u>

# Homeowner Options

- Improve lot grading to get surface water away from house
- Install/maintain adequate eavestroughs: 6 inch wide trough recommended
- Set in place downspouts: 1.5 metre extensions
- Install backwater prevention valve
- Install sump pump

# Typical New Home Servicing



The logo for the City of Edmonton is positioned vertically on the left side of the slide. It features a stylized image of a modern building with a glass facade and a triangular roof, set against a blue background. The text "City of Edmonton" is written in a serif font, oriented vertically.

# What are the Benefits?

- Quicker overall drainage
- Less pooling of water on the surface
- Less likelihood of basement flooding
- Less property damage
- Savings of time, money and inconvenience

# Discussion and Feedback

Clarifying Questions?



Issues, comments, concerns?



Ideas and suggestions?



Preferred options?