

# Drainage Services Flood Prevention Program

---

Bearspaw  
Community Consultation  
March 6, 2007



# Tonight's Meeting

1. Review draft design concept
2. Identify any further concerns
3. Look for general acceptance
4. Finalize design concept and initiate detailed design work

# Flood Prevention



# Basement Flooding

## July 11, 2004

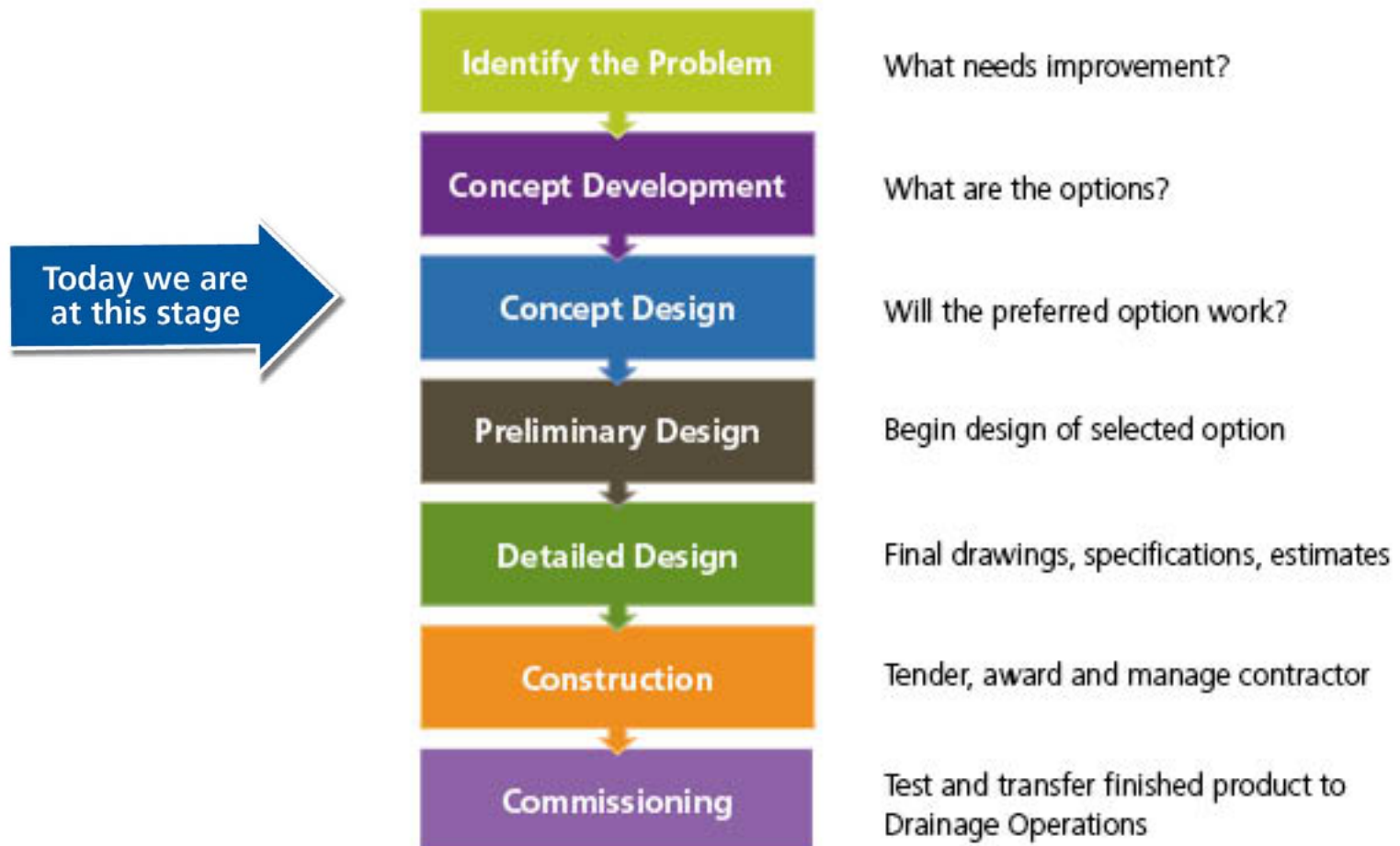


# Storm Sewer System



# Drainage Services Engineering Project Life Cycle

Every engineering project goes through a number of stages before it is finally constructed and completed. At certain points in the project life cycle we would like your input before proceeding to the next stage.





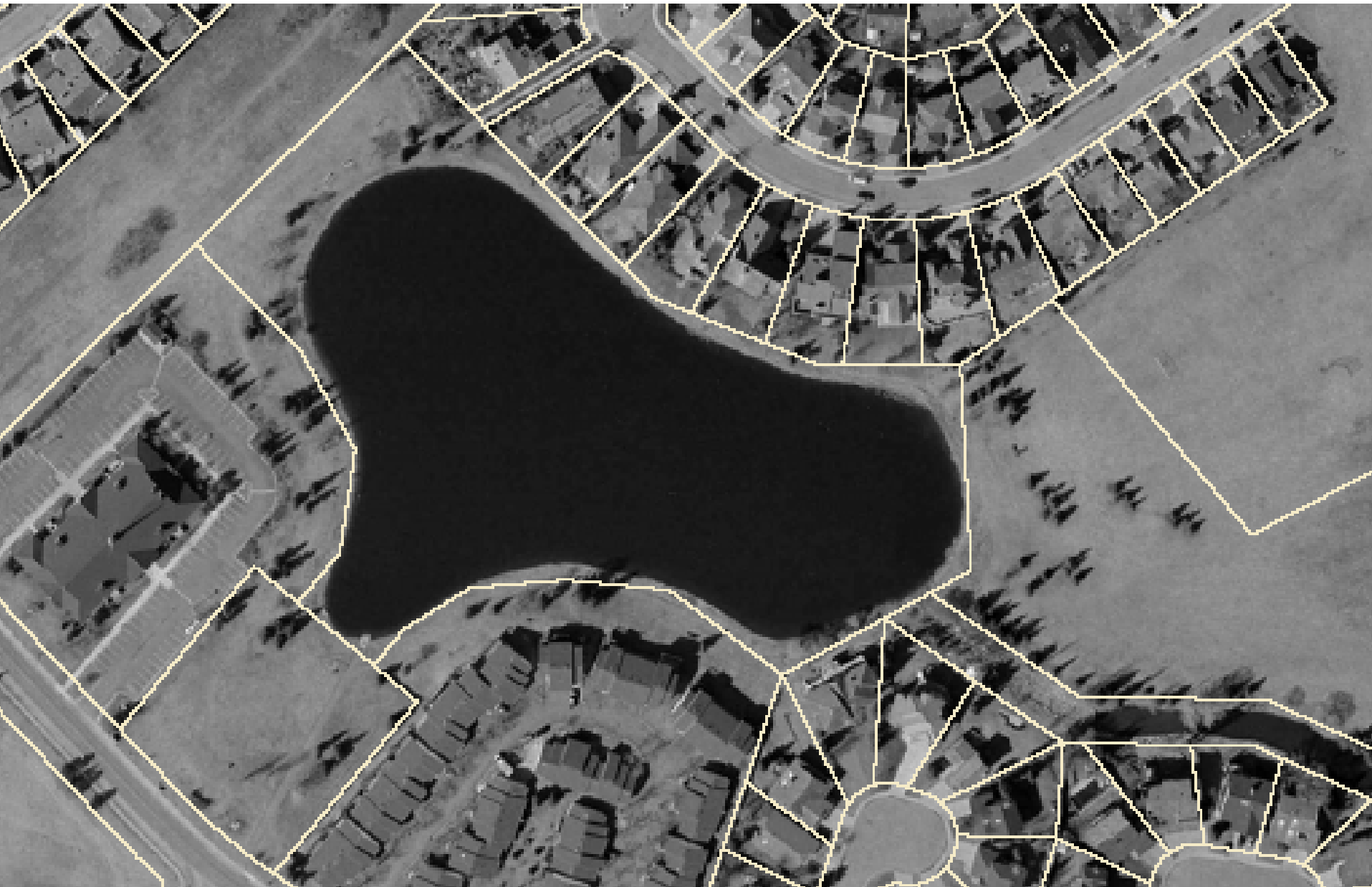
# Nov. 6/ 06 Public Meeting

- Presented
  - alternatives
  - potential enhancement opportunities
- Open discussion
- Community preferences identified

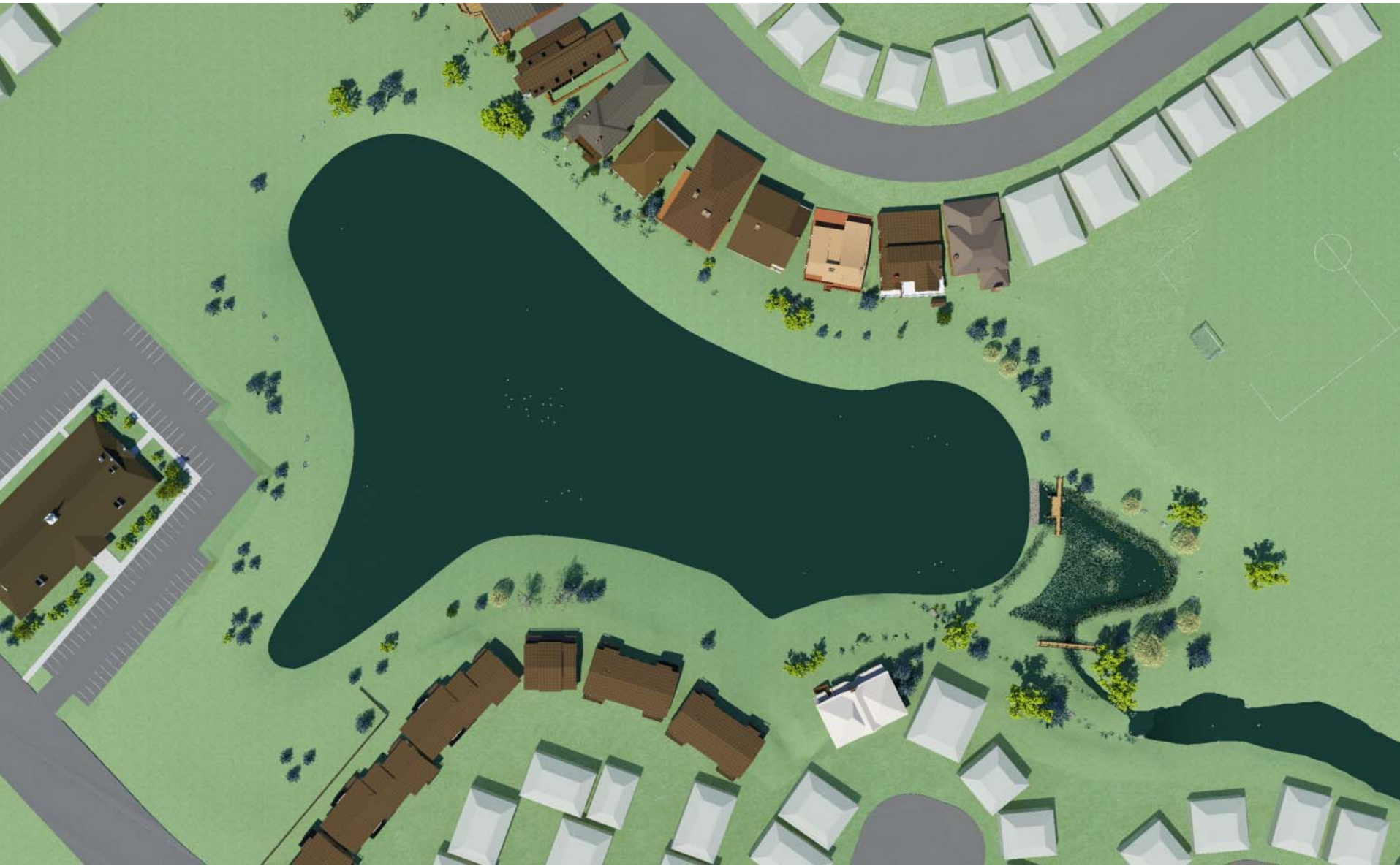
# Community Preferences

- Maximize lake surface area
- No constructed walking trails
- Wetland off east end of lake
- Foot bridges around wetland
- No other naturalization added to lake shore
- Grassed slopes to waters edge
- Reduce algae growth in creek

# Bearspaw Lake – Current Conditions



# Proposed Design Concept



# Flood Prevention Features

- Lake level lowered by 1.3 metres
- New, lower outfall structure/piping
- Wetland (east) for more storage
- Surface swale through east field





# Wetland . . .

## A Site Enhancement

- **Benefits:**
  - Increased waterfowl/wildlife habitat
  - Improved water quality
  - Improved site aesthetics
- **Key Additional Elements:**
  - Footbridges for pedestrian traffic
  - Creek redirected into wetland
  - Interpretive signage
  - Park benches, picnic tables

# Wetland





# Design Meets Community Preferences

- Maximized lake surface area
  - Somewhat steeper side slopes (5:1)
  - Slopes cut back to property line (west, south)
  - Wetland expansion to east
- No constructed walking trails
- Wetland
- Foot bridges around wetland
- No other naturalization added to lake shore
- Grassed slopes to waters edge

The logo for the City of Edmonton, featuring a stylized blue and white geometric design of a city skyline and the text "City of Edmonton" in a serif font, oriented vertically on the left side of the slide.

# Creek Enhancements

- Increased pumping rate
- Decreased channel depth
- Rock lined channel bed
- Plantings for shade – ask residents
- Route flows through wetland for improved water quality

# After Tonight's Meeting

1. Summarize and share input
2. Incorporate input into planning
3. Finalize design concept and initiate detailed design work
4. Proposed Schedule:
  - 2007/2008 design
  - 2008/2009 construction

# Special Animated Presentation

[www.edmonton.ca/floodprevention](http://www.edmonton.ca/floodprevention)