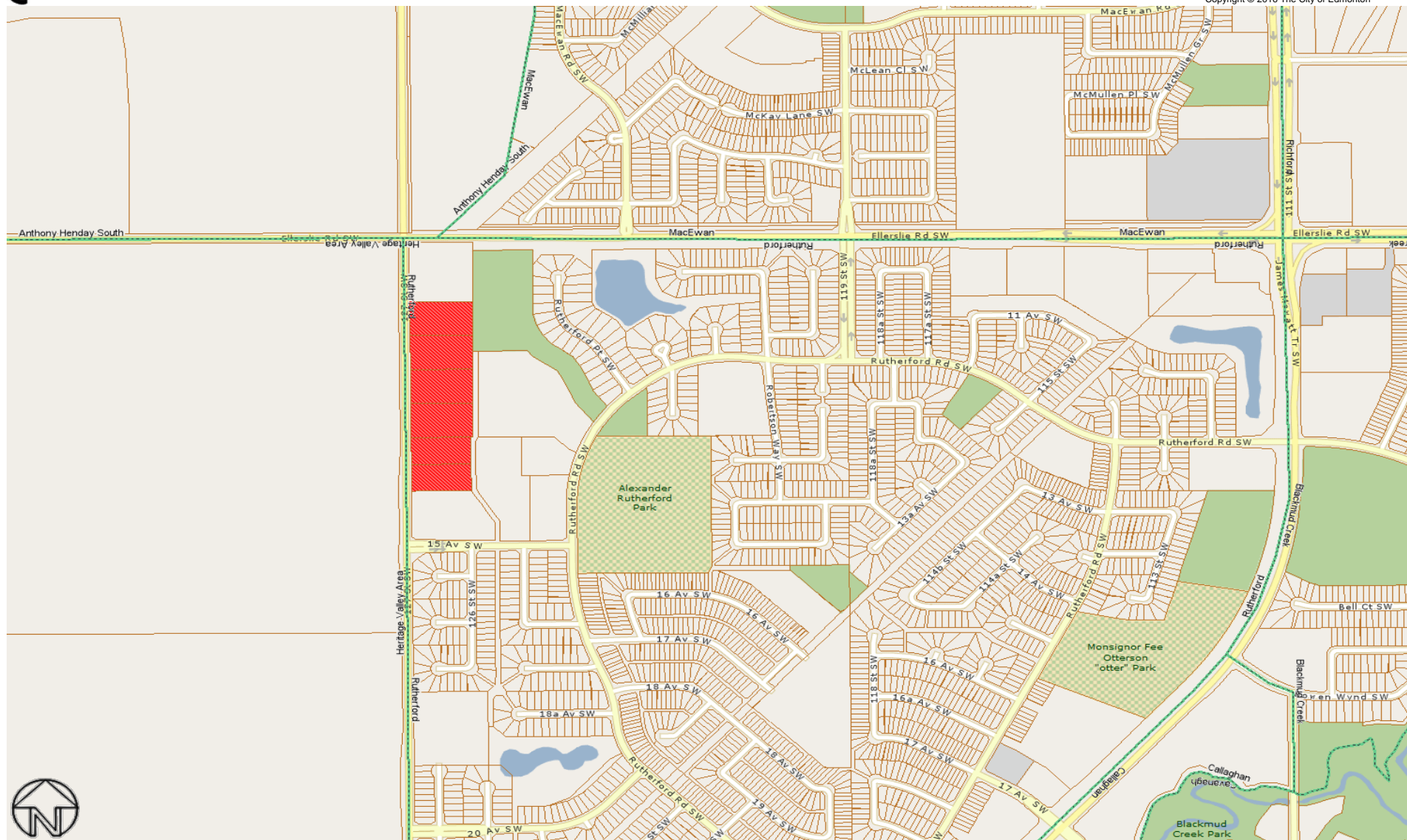


City of Edmonton
Rural Residential Study Areas
2016 Assessment

Table of Contents

<u>Study</u>	<u>Rural Residential Study Area and Neighbourhood</u>	<u>Page No.</u>
<u>Area No.</u>		
3050	127 th Street (Rutherford)	1
3051	Big Island Heights (Riverview Area)	2
3052	Big Lake Estates (Rural West Big Lake)	3
3053	Cedar Ridge (Riverview Area)	4
3054	Donsdale (Donsdale)	5
3055	Fort Road (Rural North East Horse Hill)	6
3056	Guthrie Estates (Riverview Area)	7
3057	Hawthorne Hill (Riverview Area)	7
3058	Hillview Park (Rural North East Horse Hill)	8
3059	Horse Hills and Tipperary (Rural North East Horse Hill)	8
3060	Hurstwood Park (Maple Ridge Industrial, SE Industrial)	9
3061	Johnson's Road (Edmonton Energy and Technology Park)	10
3062	Lewis Farms (Lewis Farms Industrial)	11
3063	Mooncrest Park (Kinokamu Plains Area)	12
3064	Oliver Gardens (Rural North East South Sturgeon)	13
3065	Patricia Heights (Patricia Heights)	14
3066	Quarry Ridge Phase 1 (Rural North East South Sturgeon)	13
3067	Quarry Ridge Phase 2 (Rural North East South Sturgeon)	13
3068	Rendek Ranch (Riverview Area)	7
3069	Richford Estates (Richford, Blackmud Creek Ravine)	15
3070	Rimrock Estates (Ellerslie)	16
3071	Riverside Heights (Riverview Area)	17
3072	Riverview Acres (Riverview Area)	7
3073	River Valley Country Estates (Riverview Area)	7
3074	River Valley Isolated (various neighbourhoods)	18
3075	Ellerslie Road / 34 Street (Rural South East)	19
3076	Sharonden Ravines (Riverview Area)	7
3077	South Sturgeon (Rural North East South Sturgeon)	6
3078	Triple A Acres (Edgemont)	20
3079	Ward Heights / Reppert Heights (Rural South East)	21
3080	Wedgewood (Wedgewood Heights)	5
3081	Wernerville (Ellerslie)	16
3082	West Point Estates (Windermere)	22
3083	Windermere Estates (Windermere)	23
3084	Windermere Ridge (Windermere)	22
3085	Woodbend Estates (Riverview Area)	24
3086	Quarry Ridge Phase 3 (Rural North East South Sturgeon)	13
3088	Allard (Allard)	25
3089	Carlton (Carlton)	26

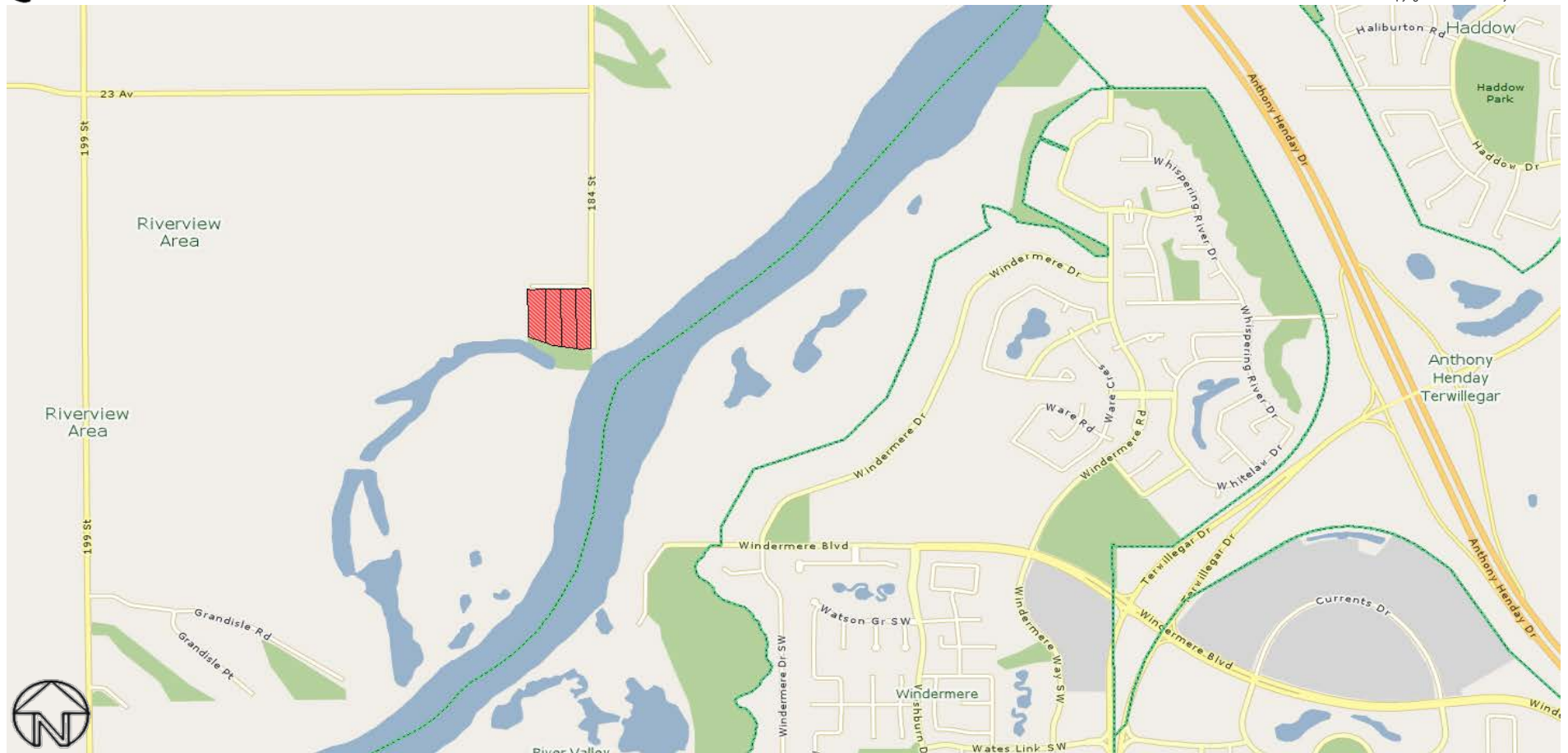


Rural Residential Study Area - 3050 (127th Street) - Rutherford Neighbourhood

All rights reserved.

The information provided by this map is for reference purpose only. The City of Edmonton disclaims any liability for the use of this map.

This map may not be published, broadcast, redrawn or redistributed in whole or in part without the express written permission of the City of Edmonton, Financial Services and Utilities Department.

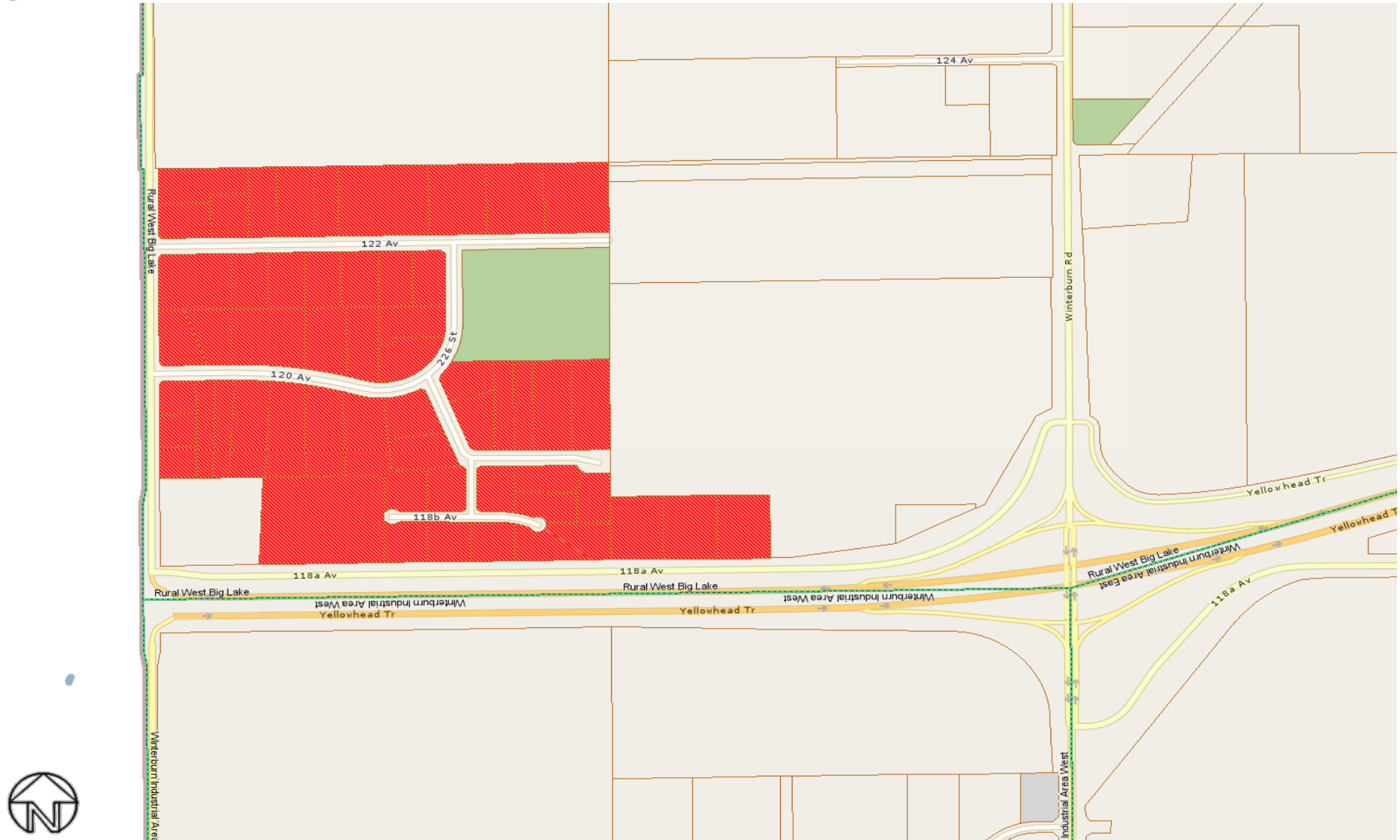


Rural Residential Study Area - 3051 (Big Island Heights) - Riverview Area Neighbourhood

All rights reserved.

The information provided by this map is for reference purpose only. The City of Edmonton disclaims any liability for the use of this map.

This map may not be published, broadcast, redrawn or redistributed in whole or in part without the express written permission of the City of Edmonton, Financial Services and Utilities Department.

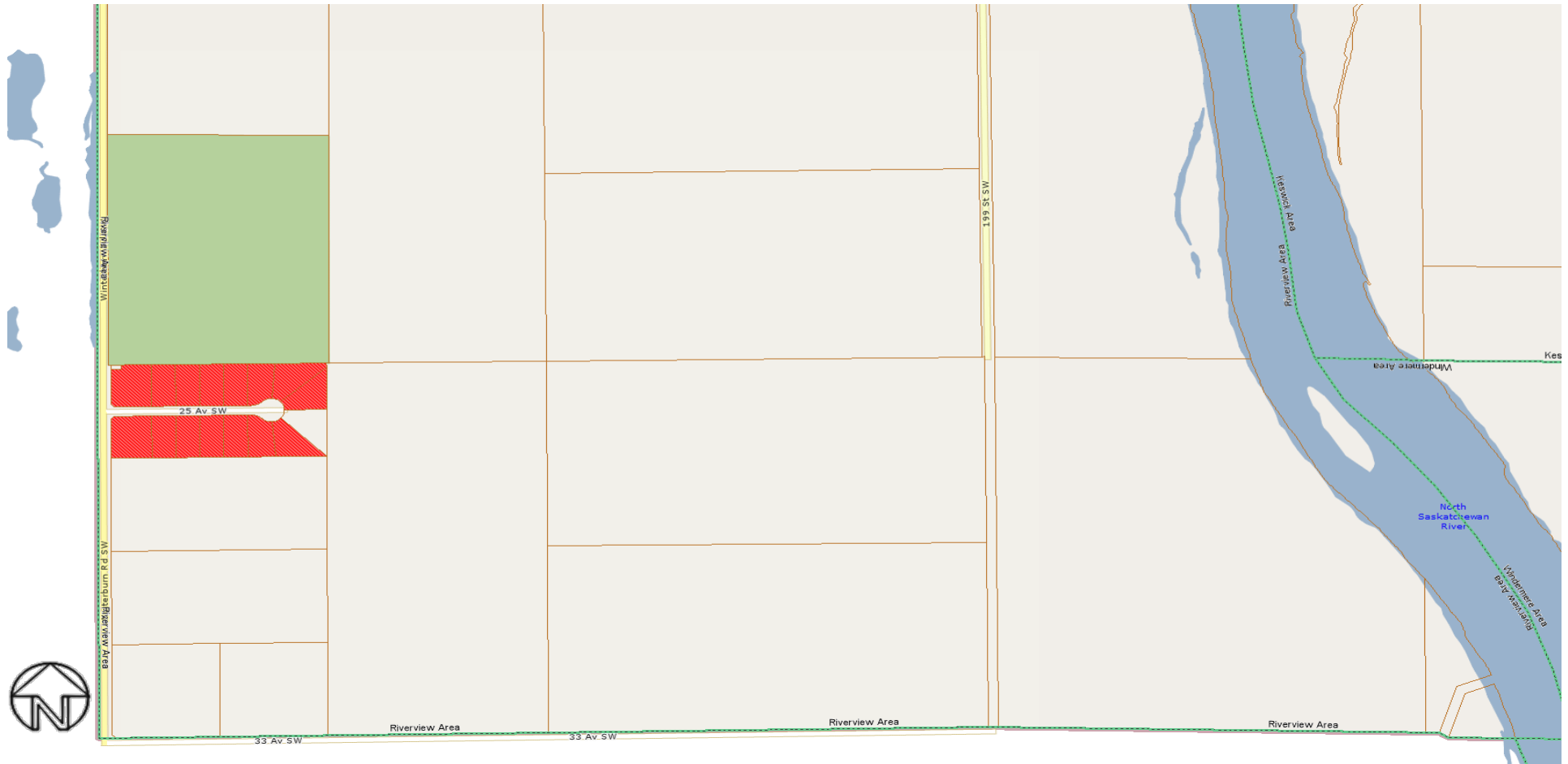


Rural Residential Study Area - 3052 (Big Lake Estates) - Rural West Big Lake Neighbourhood

All rights reserved.

The information provided by this map is for reference purpose only. The City of Edmonton disclaims any liability for the use of this map.

This map may not be published, broadcast, redrawn or redistributed in whole or in part without the express written permission of the City of Edmonton, Financial Services and Utilities Department.

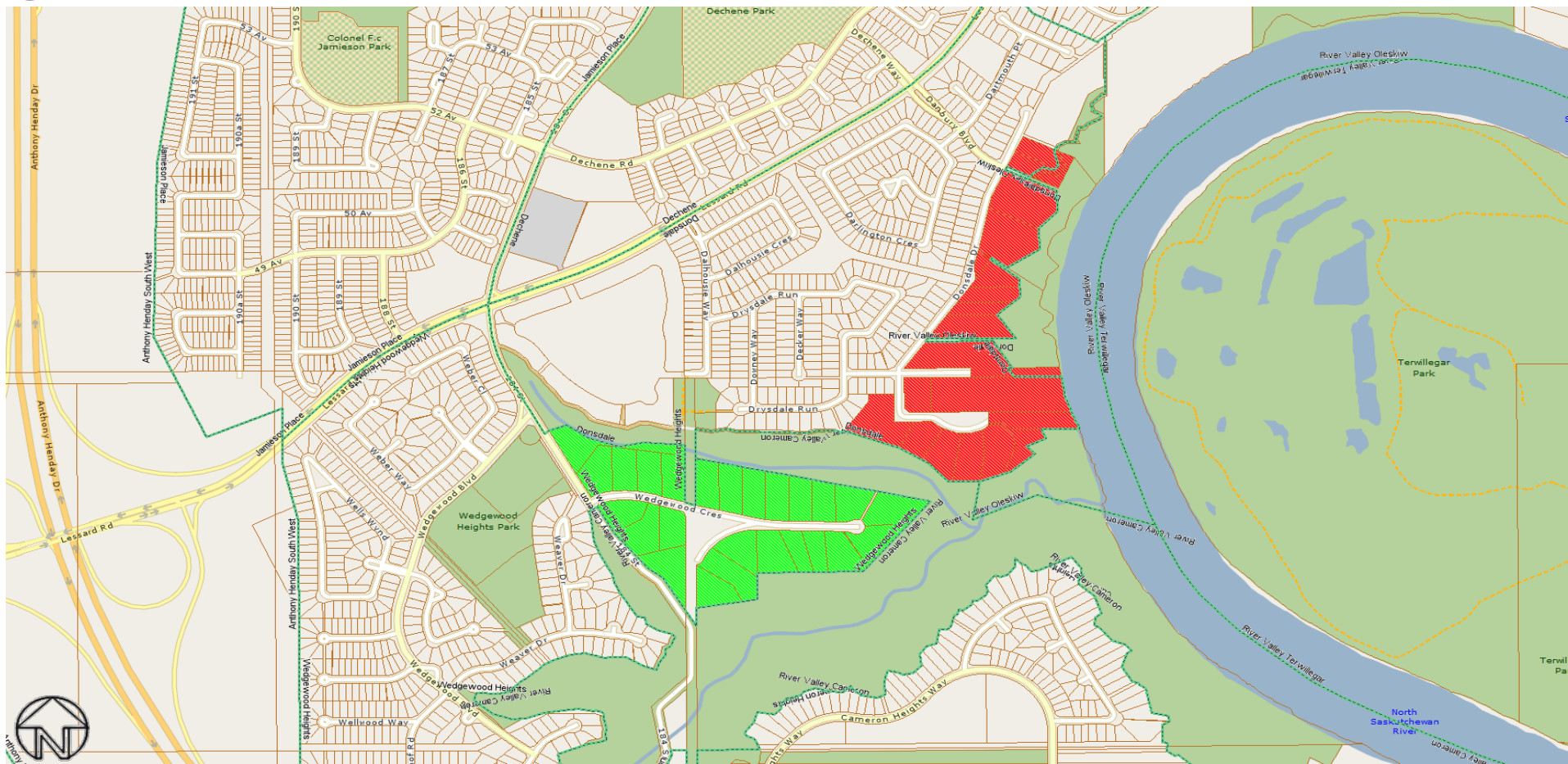


Rural Residential Study Area - 3053 (Cedar Ridge) - Riverview Area Neighbourhood

All rights reserved.

The information provided by this map is for reference purpose only. The City of Edmonton disclaims any liability for the use of this map.

This map may not be published, broadcast, redrawn or redistributed in whole or in part without the express written permission of the City of Edmonton, Financial Services and Utilities Department.



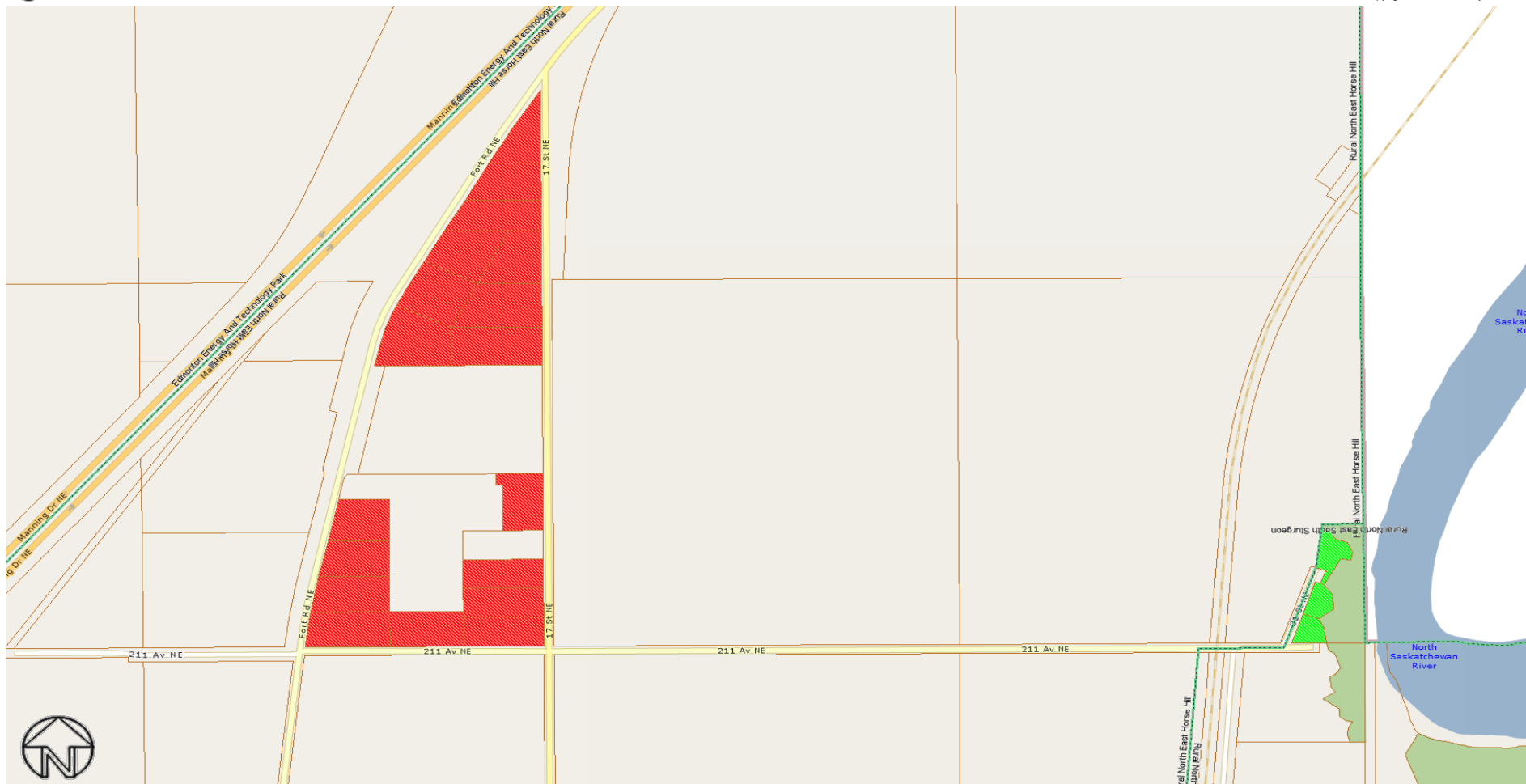
Rural Residential Study Areas - Donsdale and Wedgewood Heights Neighbourhoods

- 3054 (Donsdale)
- 3080 (Wedgewood)

All rights reserved.

The information provided by this map is for reference purpose only. The City of Edmonton disclaims any liability for the use of this map.

This map may not be published, broadcast, redrawn or redistributed in whole or in part without the express written permission of the City of Edmonton, Financial Services and Utilities Department.



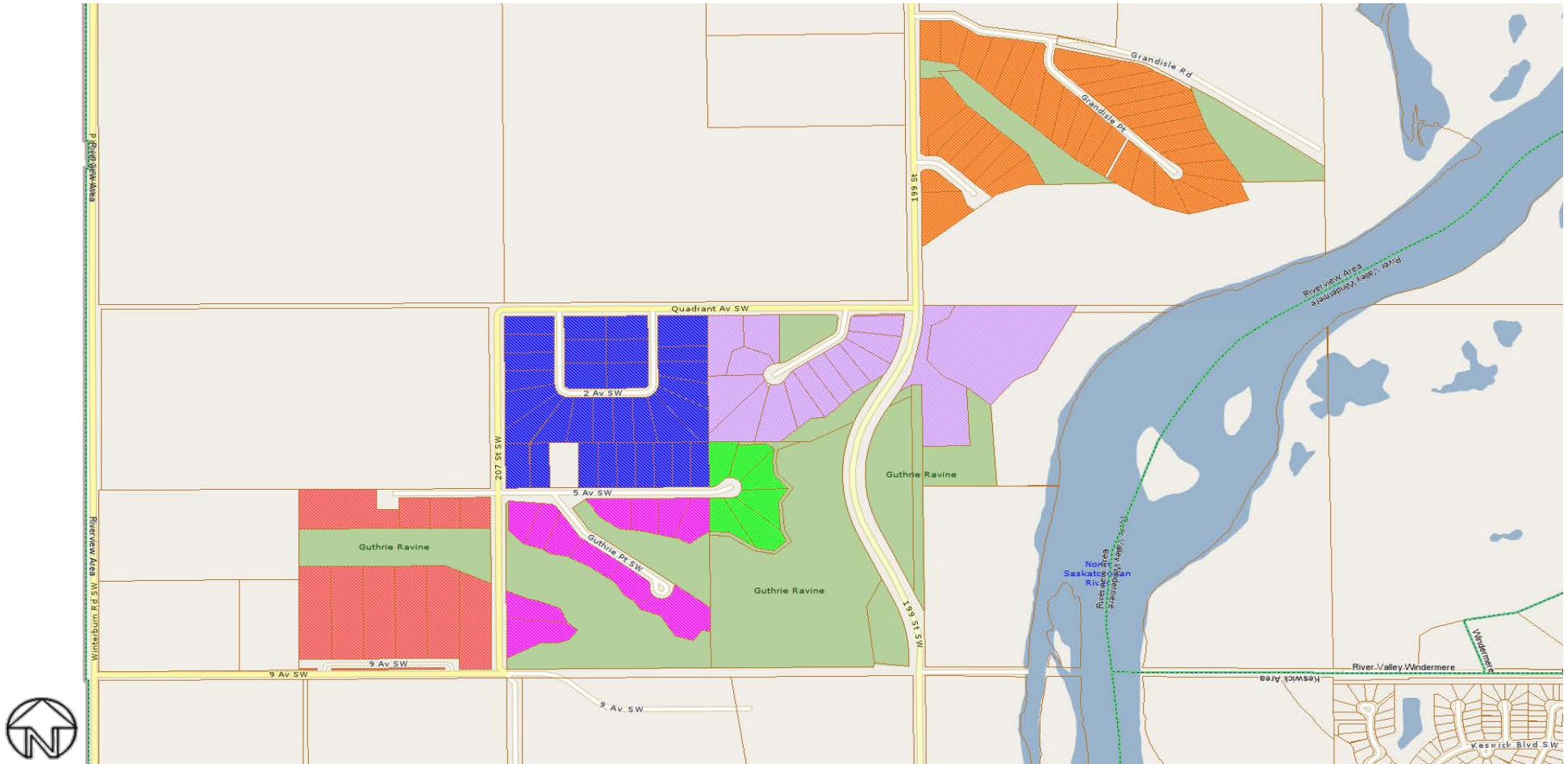
Rural Residential Study Areas - Rural North East Horse Hill and Rural North East South Sturgeon Neighbourhoods

3055 (Fort Road)

3077 (South Sturgeon)

All rights reserved.

The information provided by this map is for reference purpose only. The City of Edmonton disclaims any liability for the use of this map. This map may not be published, broadcast, redrawn or redistributed in whole or in part without the express written permission of the City of Edmonton, Financial Services and Utilities Department.



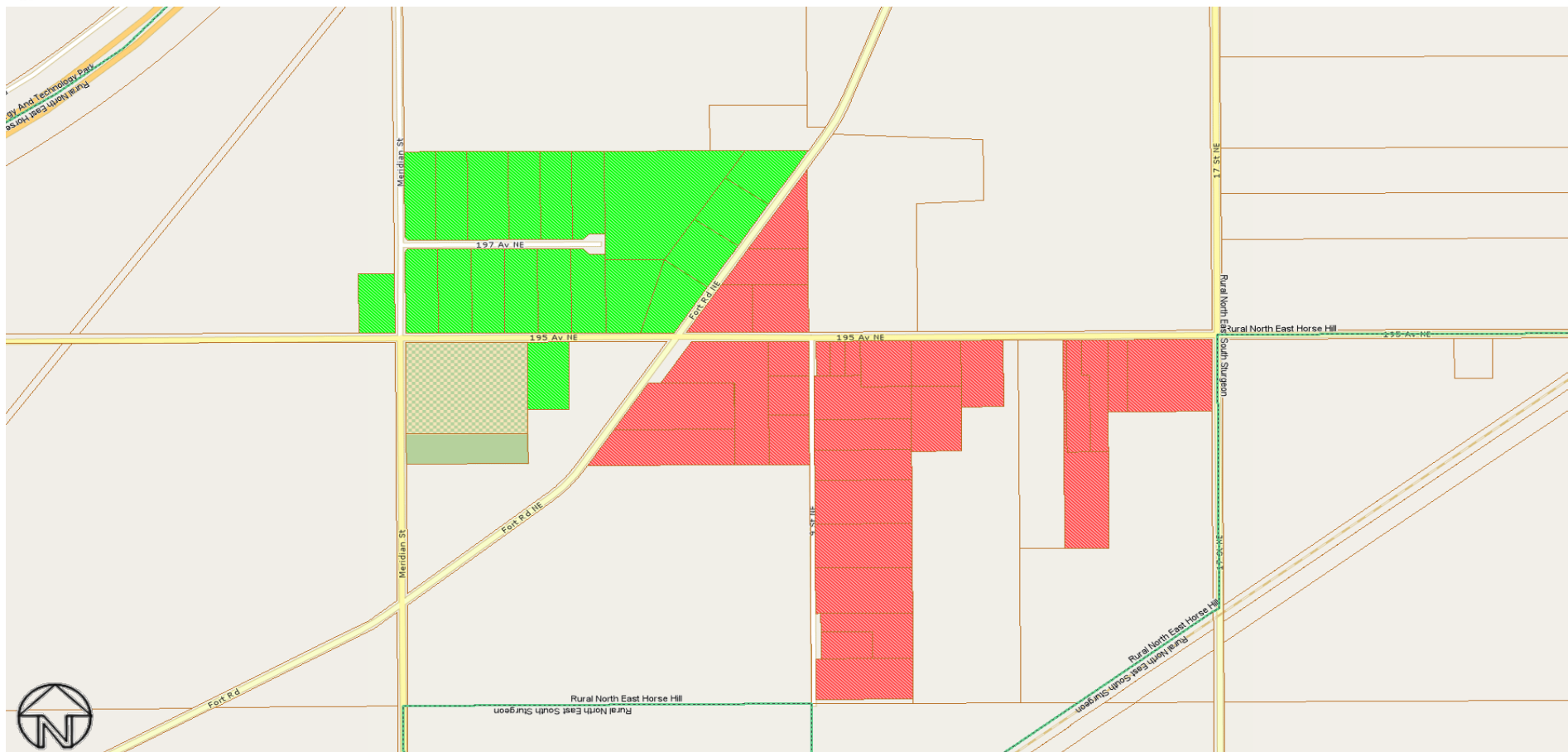
Rural Residential Study Areas - Riverview Area Neighbourhood

	3056 (Guthrie Estates)		3072 (Riverview Acres)
	3057 (Hawthorne Hill)		3073 (River Valley Country Estates)
	3068 (Rendek Ranch)		3076 (Sharonden Ravines)

All rights reserved.

The information provided by this map is for reference purpose only. The City of Edmonton disclaims any liability for the use of this map.

This map may not be published, broadcast, redrawn or redistributed in whole or in part without the express written permission of the City of Edmonton, Financial Services and Utilities Department.

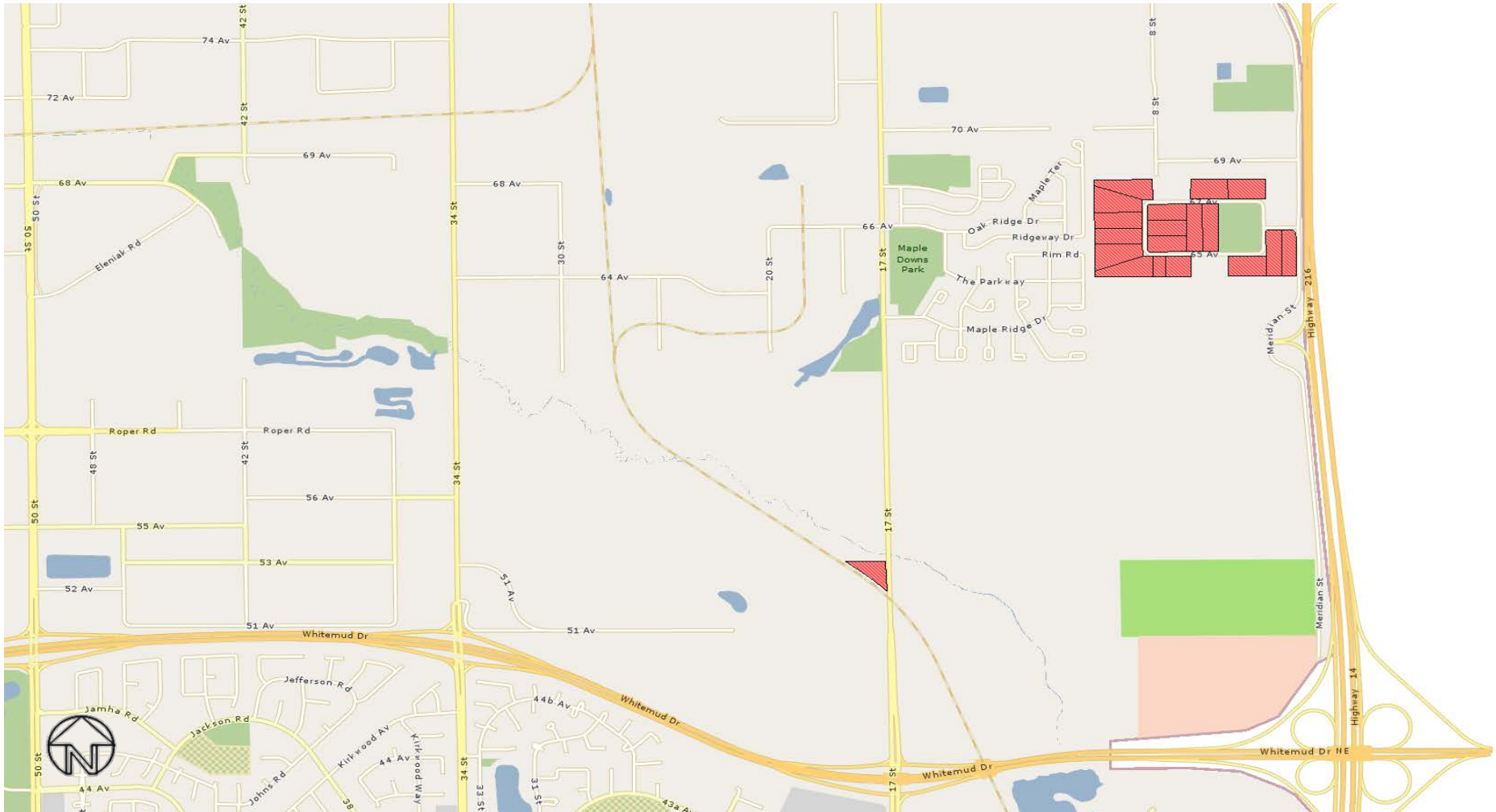


Rural Residential Study Areas - Rural North East Horse Hill Neighbourhood

- 3059 (Horse Hill and Tipperary)
- 3058 (Hillview Park)

All rights reserved.

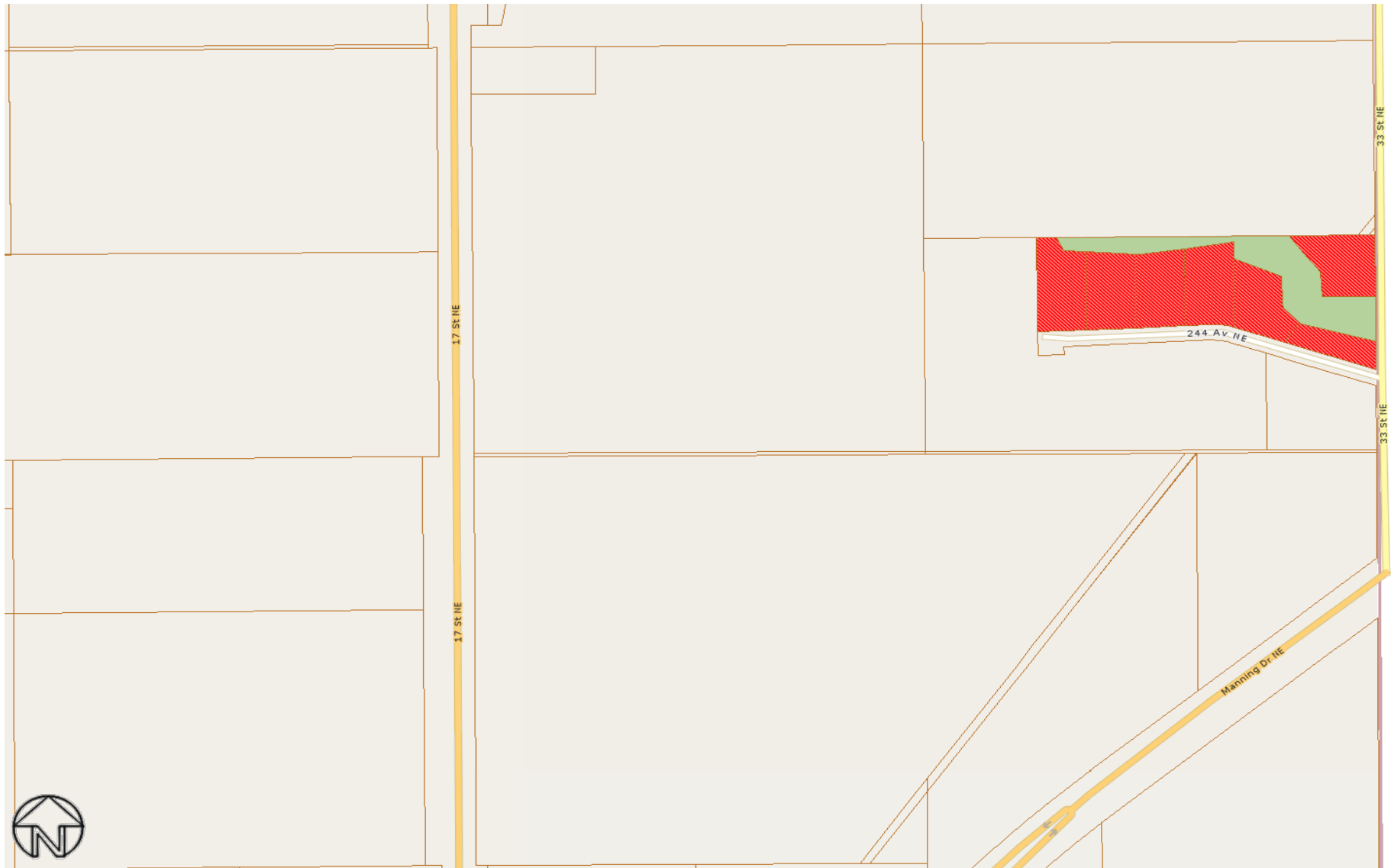
The information provided by this map is for reference purpose only. The City of Edmonton disclaims any liability for the use of this map. This map may not be published, broadcast, redrawn or redistributed in whole or in part without the express written permission of the City of Edmonton, Financial Services and Utilities Department.



Rural Residential Study Area - 3060 (Hurstwood Park) - Maple Ridge Industrial and Southeast (Annexed) Industrial Neighbourhoods

All rights reserved.

The information provided by this map is for reference purpose only. The City of Edmonton disclaims any liability for the use of this map. This map may not be published, broadcast, redrawn or redistributed in whole or in part without the express written permission of the City of Edmonton, Financial Services and Utilities Department.

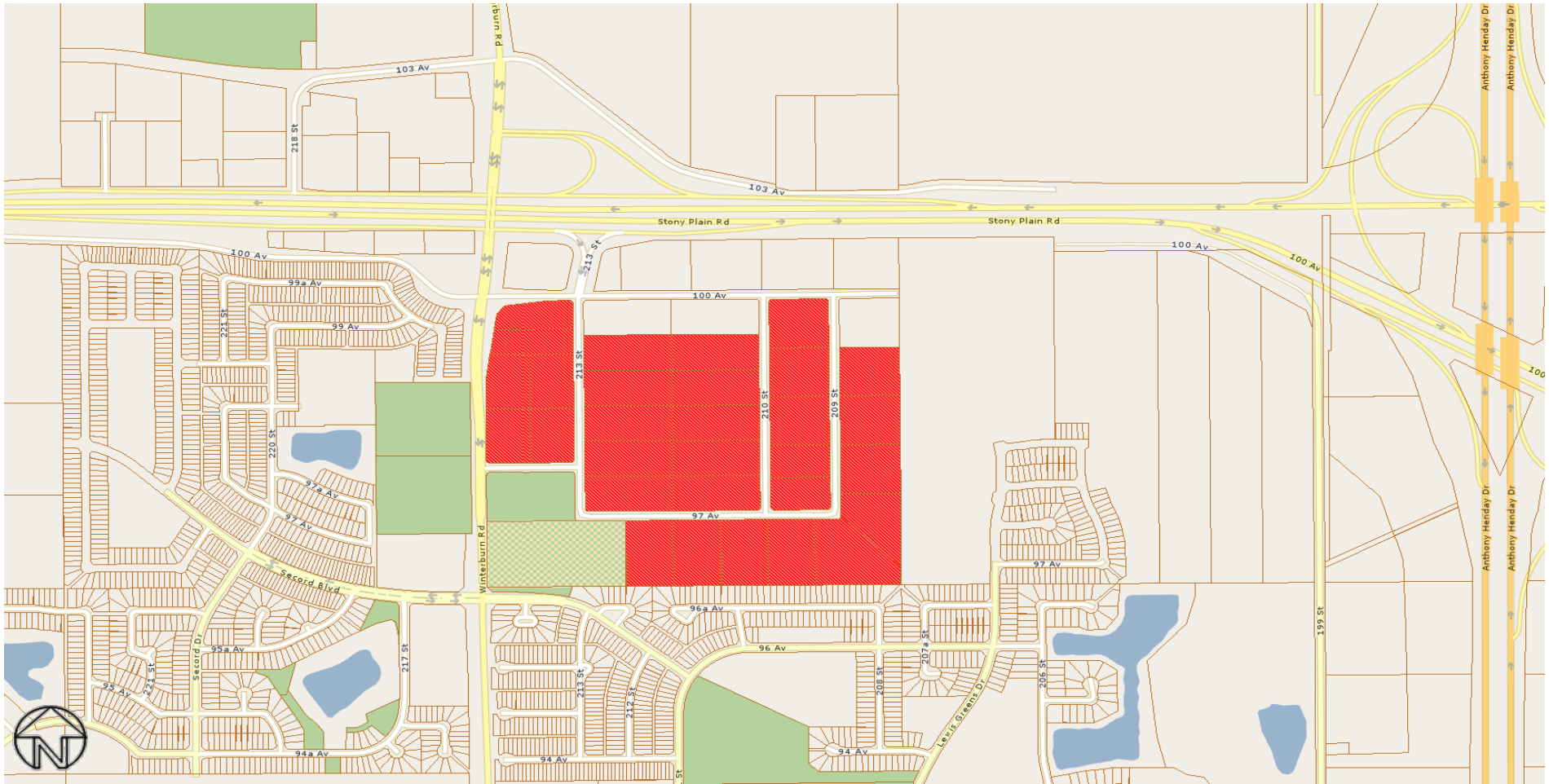


Rural Residential Study Area - 3061 (Johnson's Road) - Edmonton Energy and Technology Park Neighbourhood

All rights reserved.

The information provided by this map is for reference purpose only. The City of Edmonton disclaims any liability for the use of this map.

This map may not be published, broadcast, redrawn or redistributed in whole or in part without the express written permission of the City of Edmonton, Financial Services and Utilities Department.

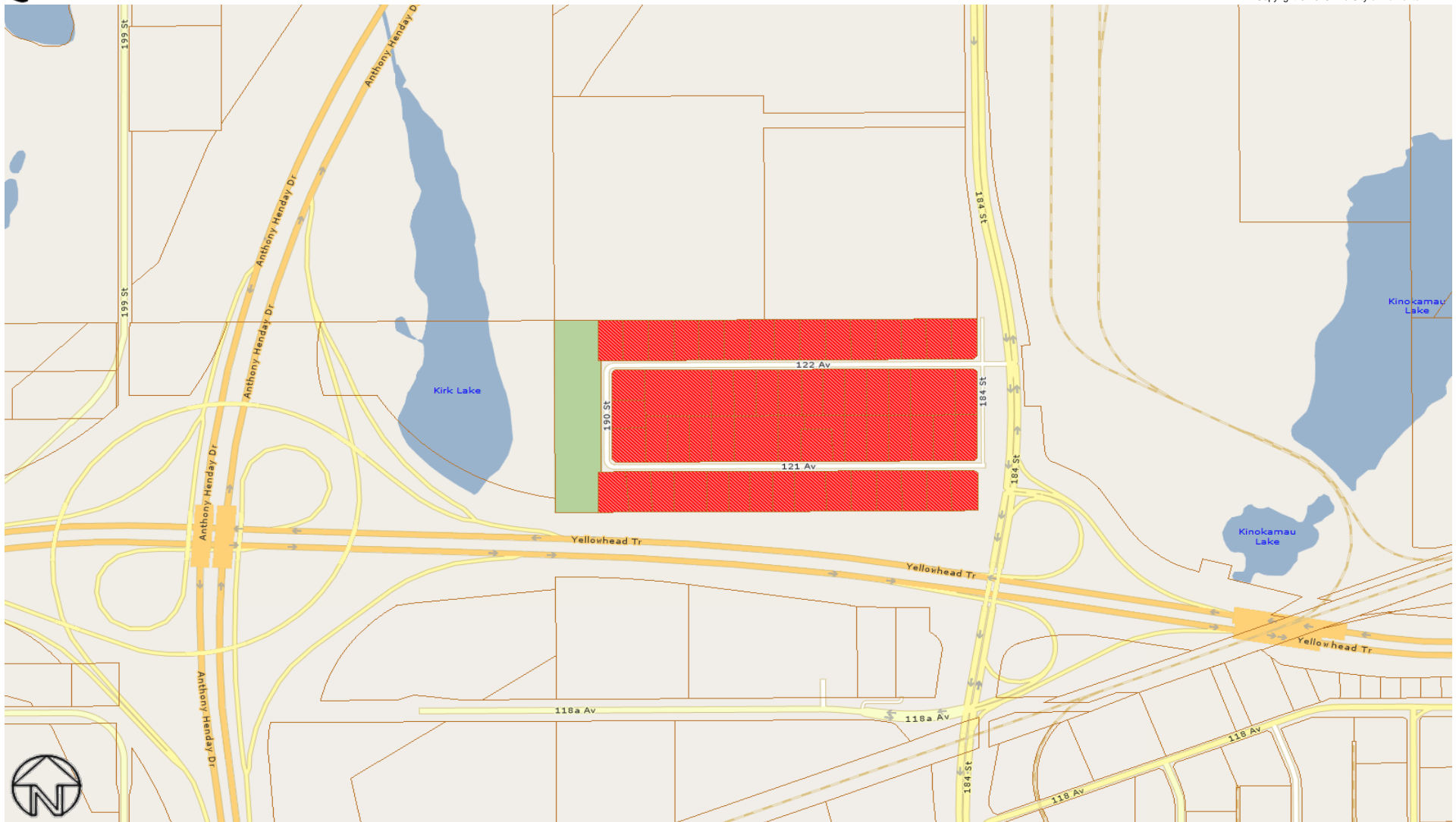


Rural Residential Study Area - 3062 (Lewis Farms) - Lewis Farms Industrial Neighbourhood

All rights reserved.

The information provided by this map is for reference purpose only. The City of Edmonton disclaims any liability for the use of this map.

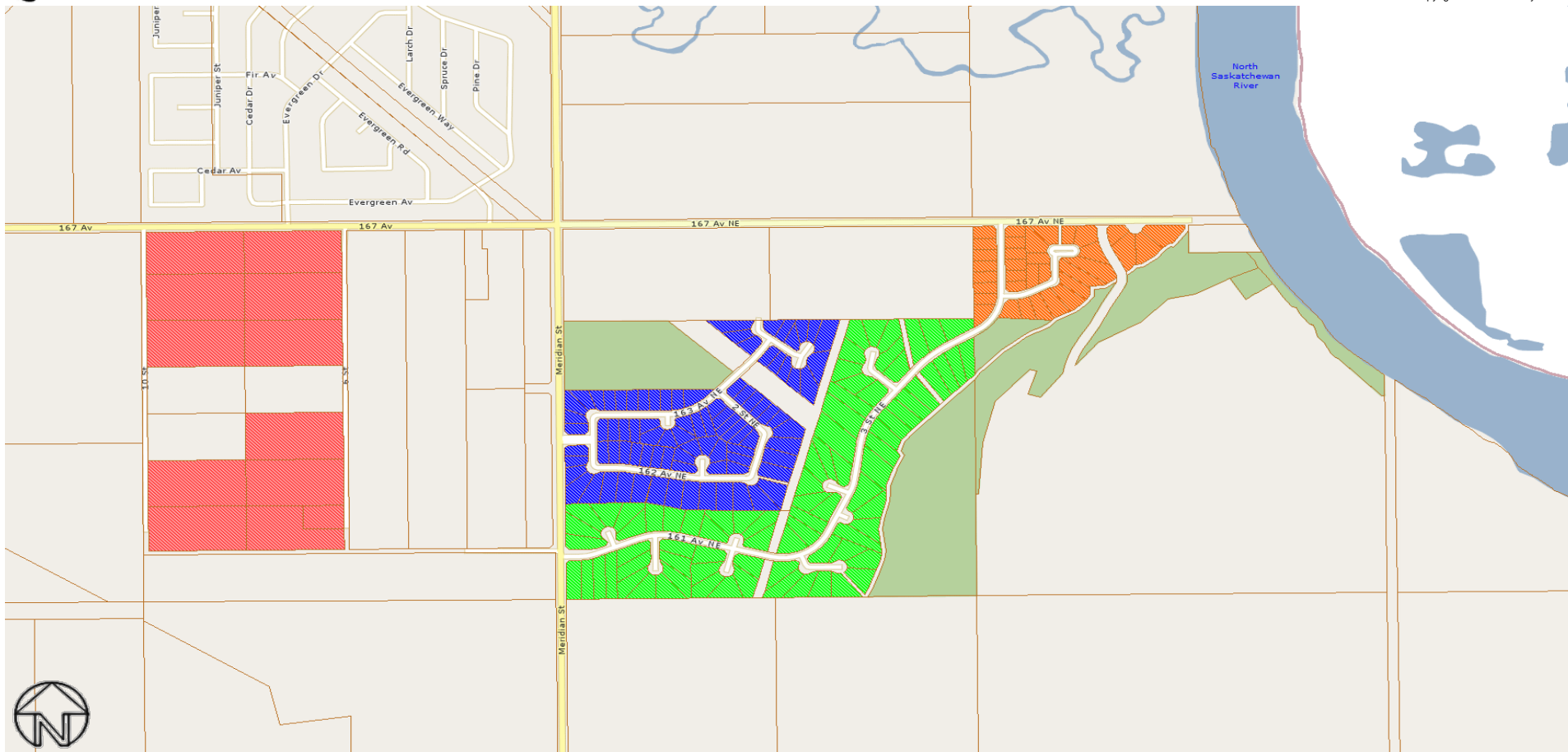
This map may not be published, broadcast, redrawn or redistributed in whole or in part without the express written permission of the City of Edmonton, Financial Services and Utilities Department.



Rural Residential Study Area - 3063 (Mooncrest Park) - Kinokamau Plains Area Neighbourhood

All rights reserved.

The information provided by this map is for reference purpose only. The City of Edmonton disclaims any liability for the use of this map. This map may not be published, broadcast, redrawn or redistributed in whole or in part without the express written permission of the City of Edmonton, Financial Services and Utilities Department.

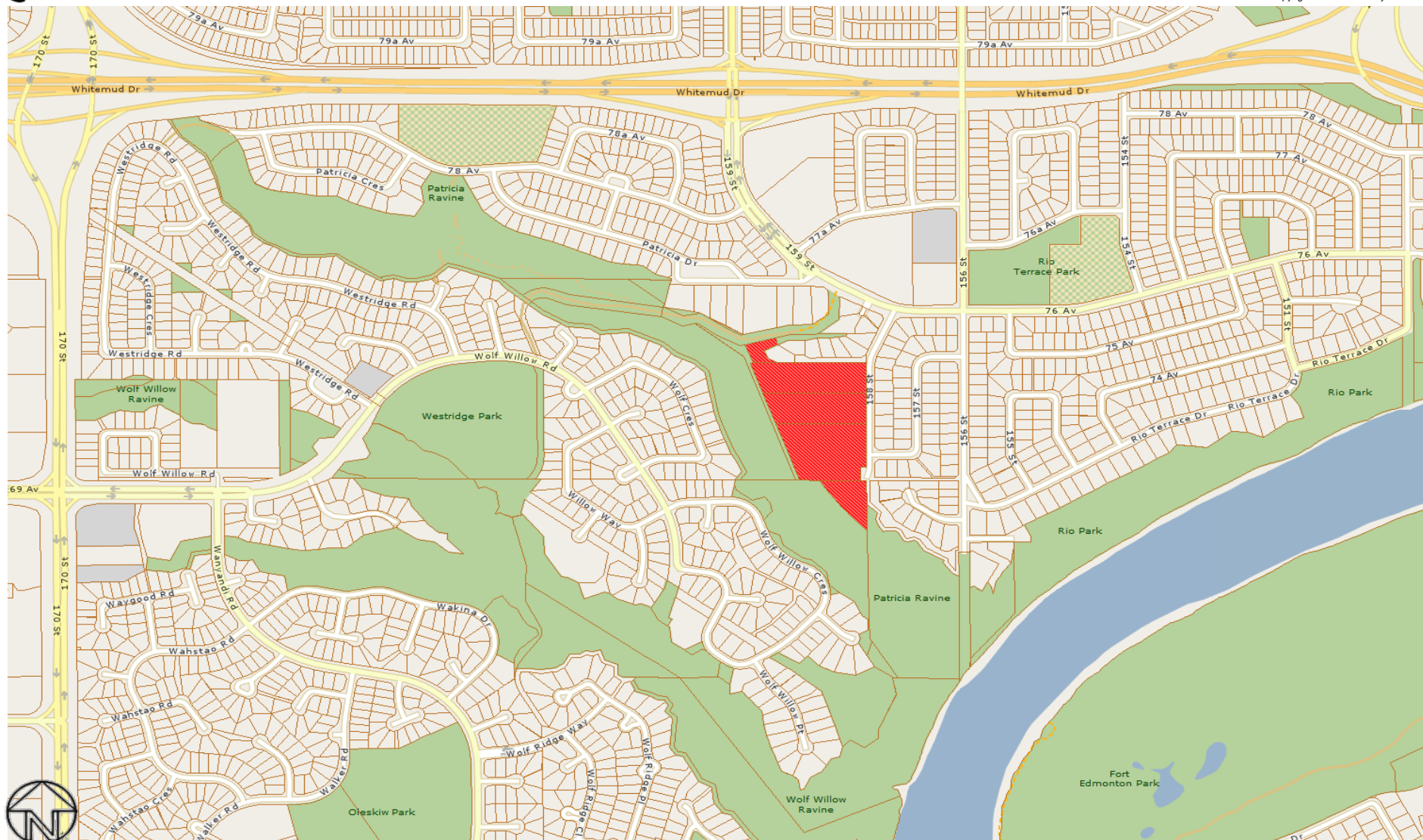


Rural Residential Study Areas - Rural North East South Sturgeon Neighbourhood

	3064 (Oliver Gardens)		3067 (Quarry Ridge Phase 2)
	3066 (Quarry Ridge Phase 1)		3086 (Quarry Ridge Phase 3)

All rights reserved.

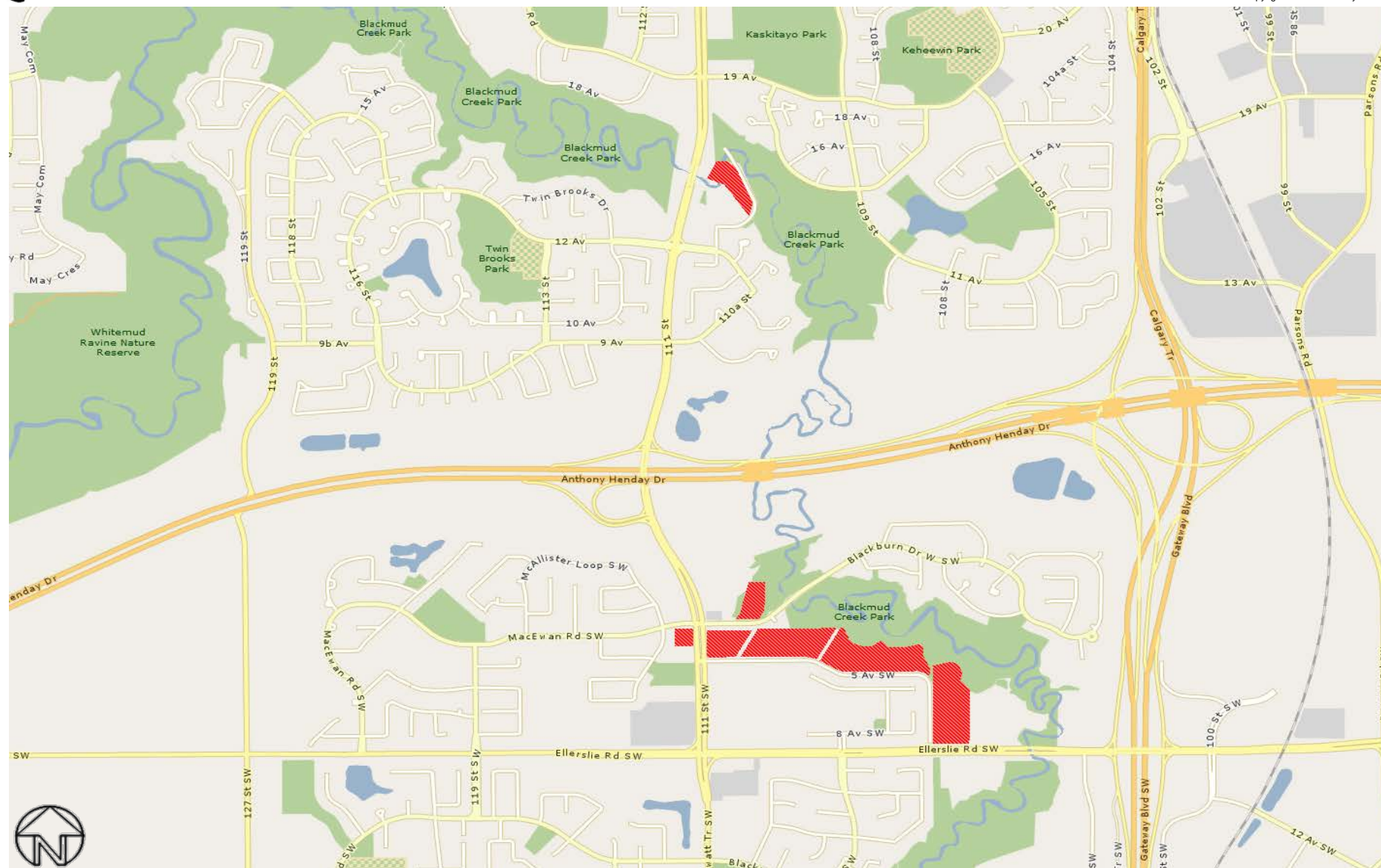
The information provided by this map is for reference purpose only. The City of Edmonton disclaims any liability for the use of this map. This map may not be published, broadcast, redrawn or redistributed in whole or in part without the express written permission of the City of Edmonton, Financial Services and Utilities Department.



Rural Residential Study Area - 3065 (Patricia Heights) - Patricia Heights Neighbourhood

All rights reserved.

The information provided by this map is for reference purpose only. The City of Edmonton disclaims any liability for the use of this map. This map may not be published, broadcast, redrawn or redistributed in whole or in part without the express written permission of the City of Edmonton, Financial Services and Utilities Department.



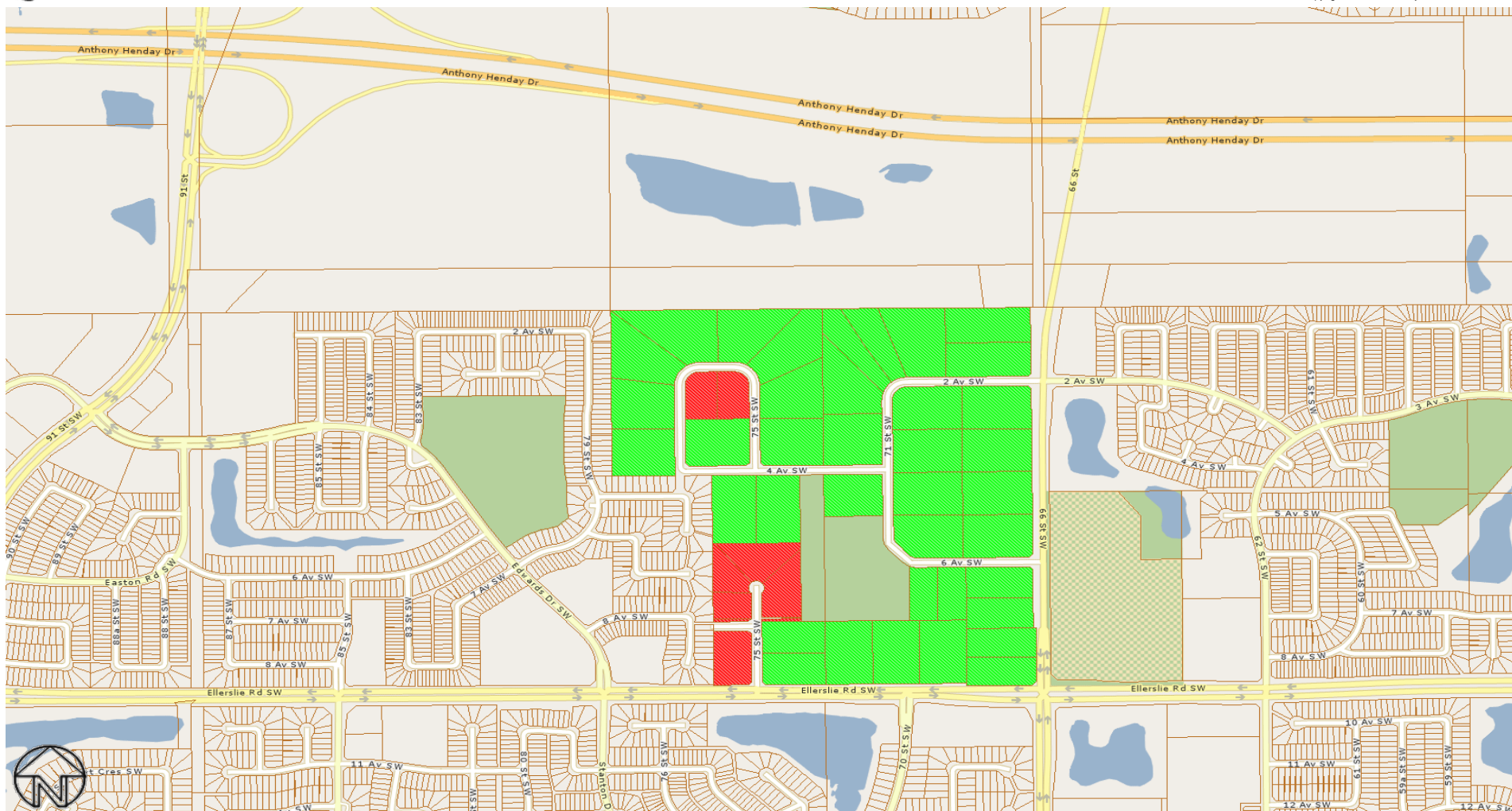
Rural Residential Study Area - 3069 (Richford Estates) - Richford and Blackmud Creek Ravine Neighbourhoods

All rights reserved.

The information provided by this map is for reference purpose only. The City of Edmonton disclaims any liability for the use of this map.

This map may not be published, broadcast, redrawn or redistributed in whole or in part without the express written permission of the

City of Edmonton, Financial Services and Utilities Department.



Rural Residential Study Areas - Ellerslie Neighbourhood

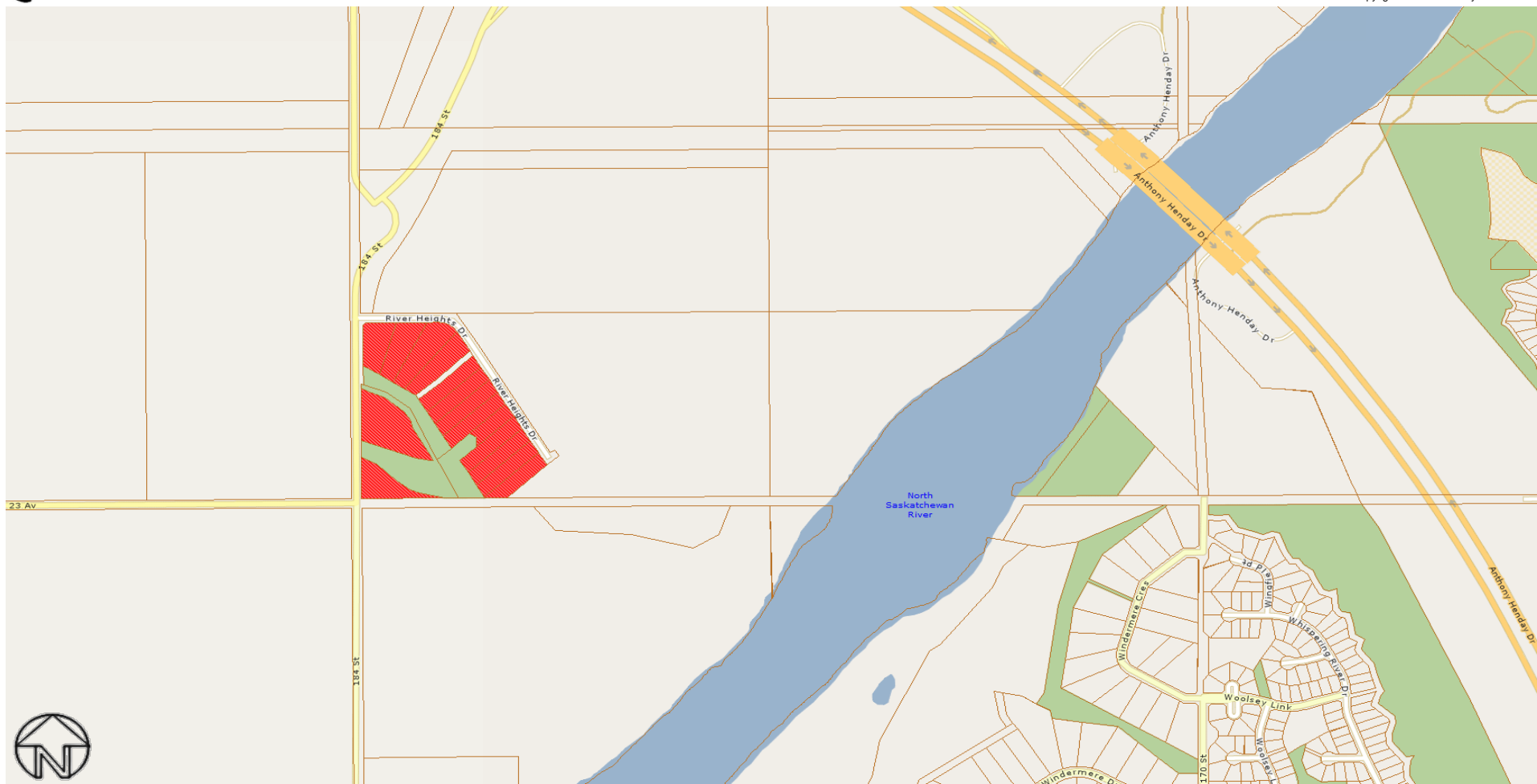
3070 (Rimrock Estates)

3081 (Wernerville)

All rights reserved.

The information provided by this map is for reference purpose only. The City of Edmonton disclaims any liability for the use of this map.

This map may not be published, broadcast, redrawn or redistributed in whole or in part without the express written permission of the City of Edmonton, Financial Services and Utilities Department.



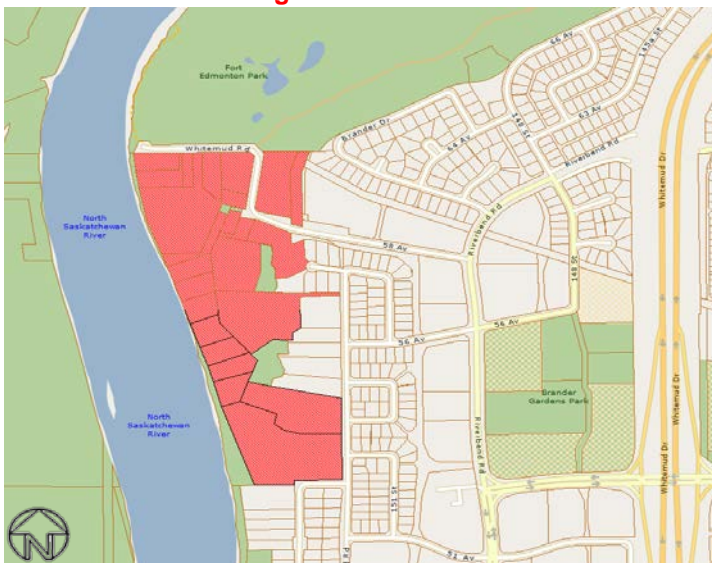
Rural Residential Study Area - 3071 (Riverside Heights) - Riverview Area Neighbourhood

All rights reserved.

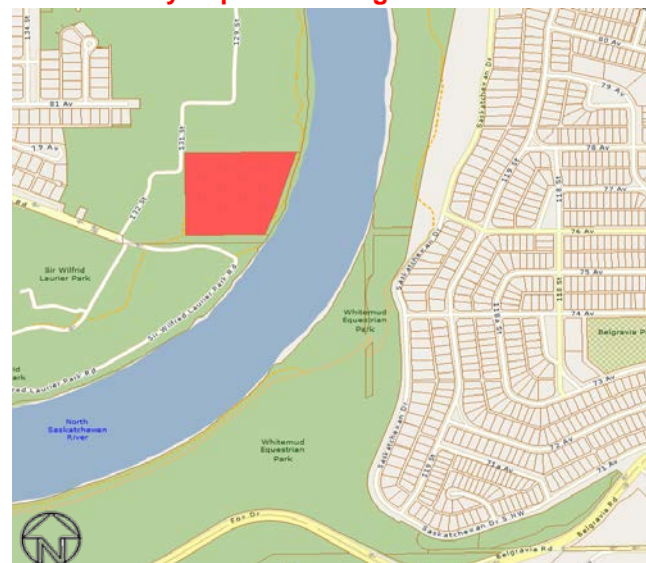
The information provided by this map is for reference purpose only. The City of Edmonton disclaims any liability for the use of this map.

This map may not be published, broadcast, redrawn or redistributed in whole or in part without the express written permission of the City of Edmonton, Financial Services and Utilities Department.

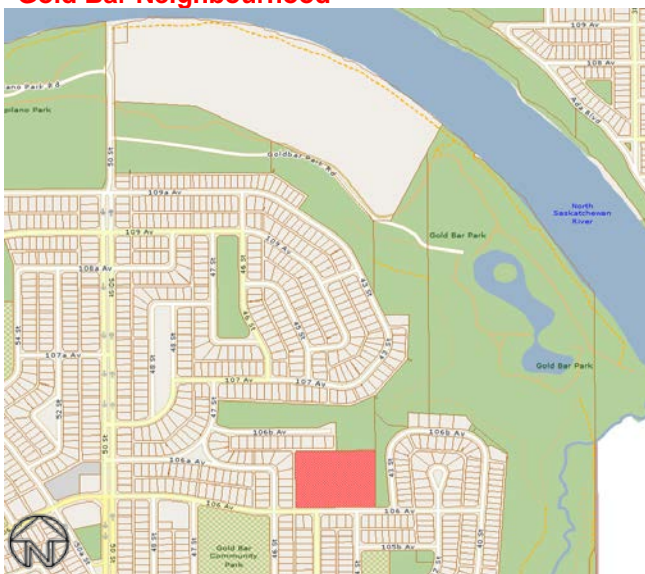
River Valley Fort Edmonton, River Valley Terwillegar Brander Gardens Neighbourhoods



River Valley Capitol Hill Neighbourhood



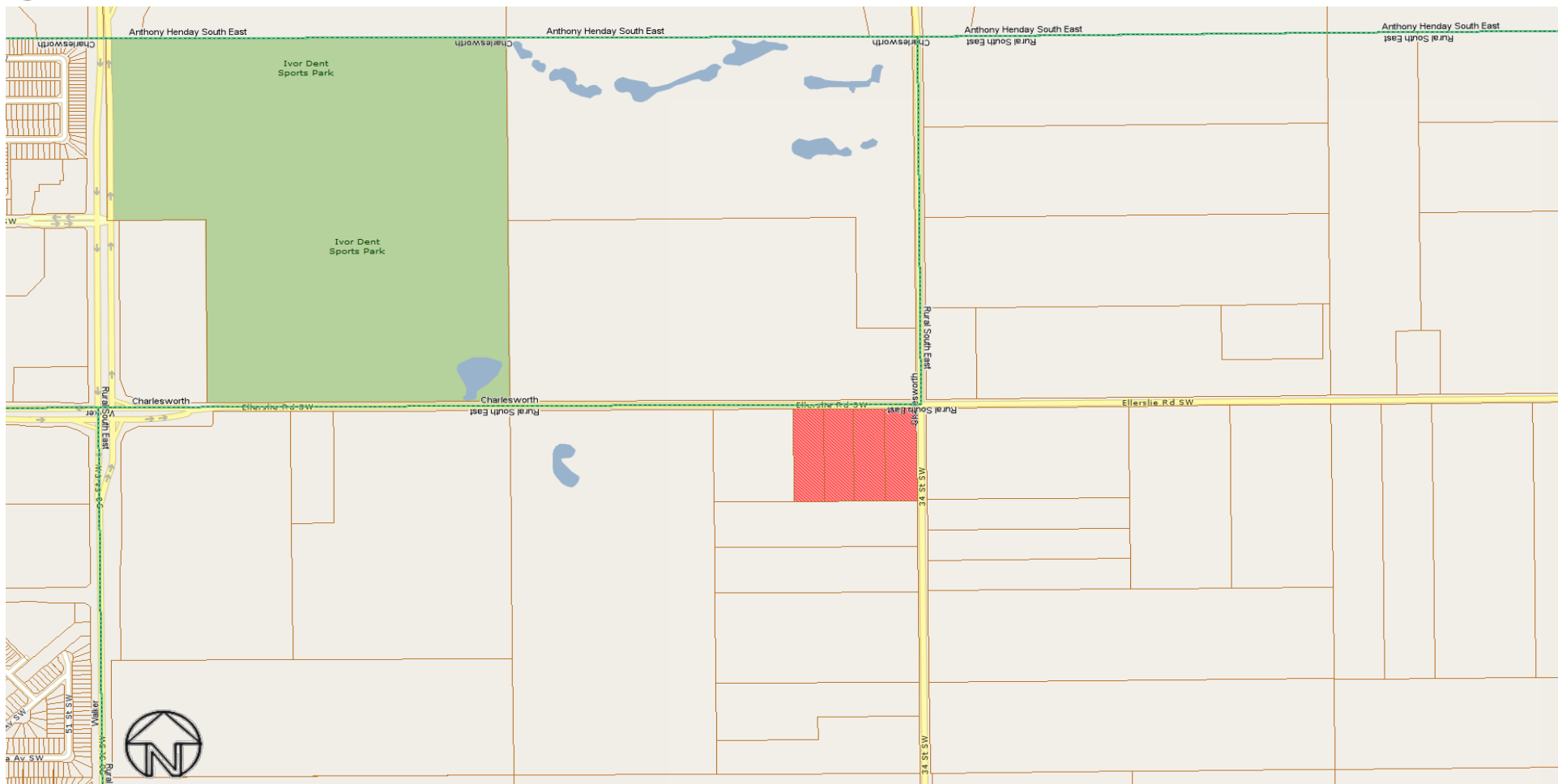
Gold Bar Neighbourhood



Rural Residential Study Area - 3074 (River Valley Isolated) - Various Neighbourhoods

All rights reserved.

The information provided by this map is for reference purpose only. The City of Edmonton disclaims any liability for the use of this map. This map may not be published, broadcast, redrawn or redistributed in whole or in part without the express written permission of the City of Edmonton, Financial Services and Utilities Department.



Rural Residential Study Area - 3075 (Ellerslie Road / 34 Street) - Rural South East Neighbourhood

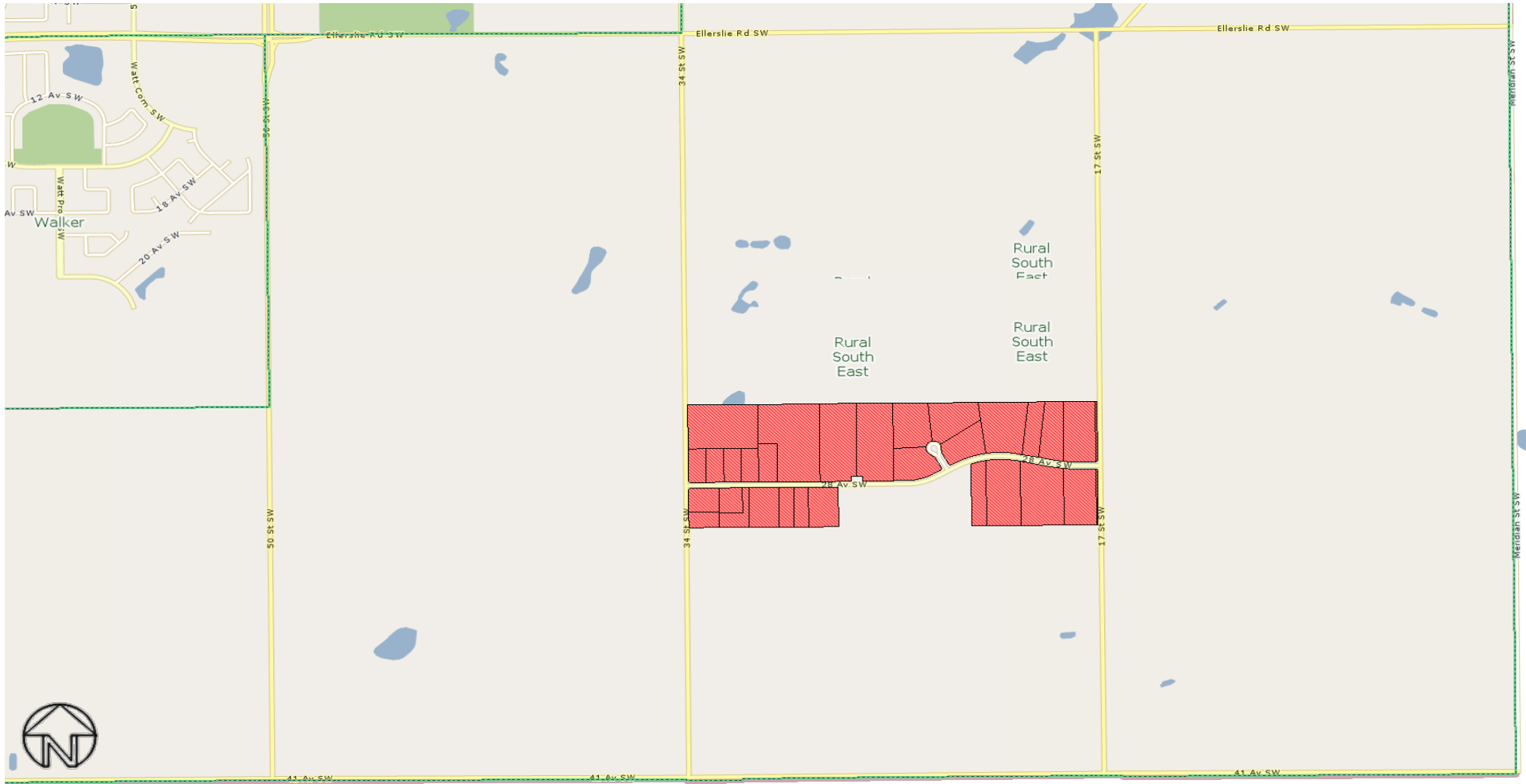
All rights reserved.

The information provided by this map is for reference purpose only. The City of Edmonton disclaims any liability for the use of this map.

This map may not be published, broadcast, redrawn or redistributed in whole or in part without the express written permission of the City of Edmonton, Financial Services and Utilities Department.



All rights reserved.
The information provided by this map is for reference purpose only. The City of Edmonton disclaims any liability for the use of this map.
This map may not be published, broadcast, redrawn or redistributed in whole or in part without the express written permission of the City of Edmonton, Financial Services and Utilities Department.

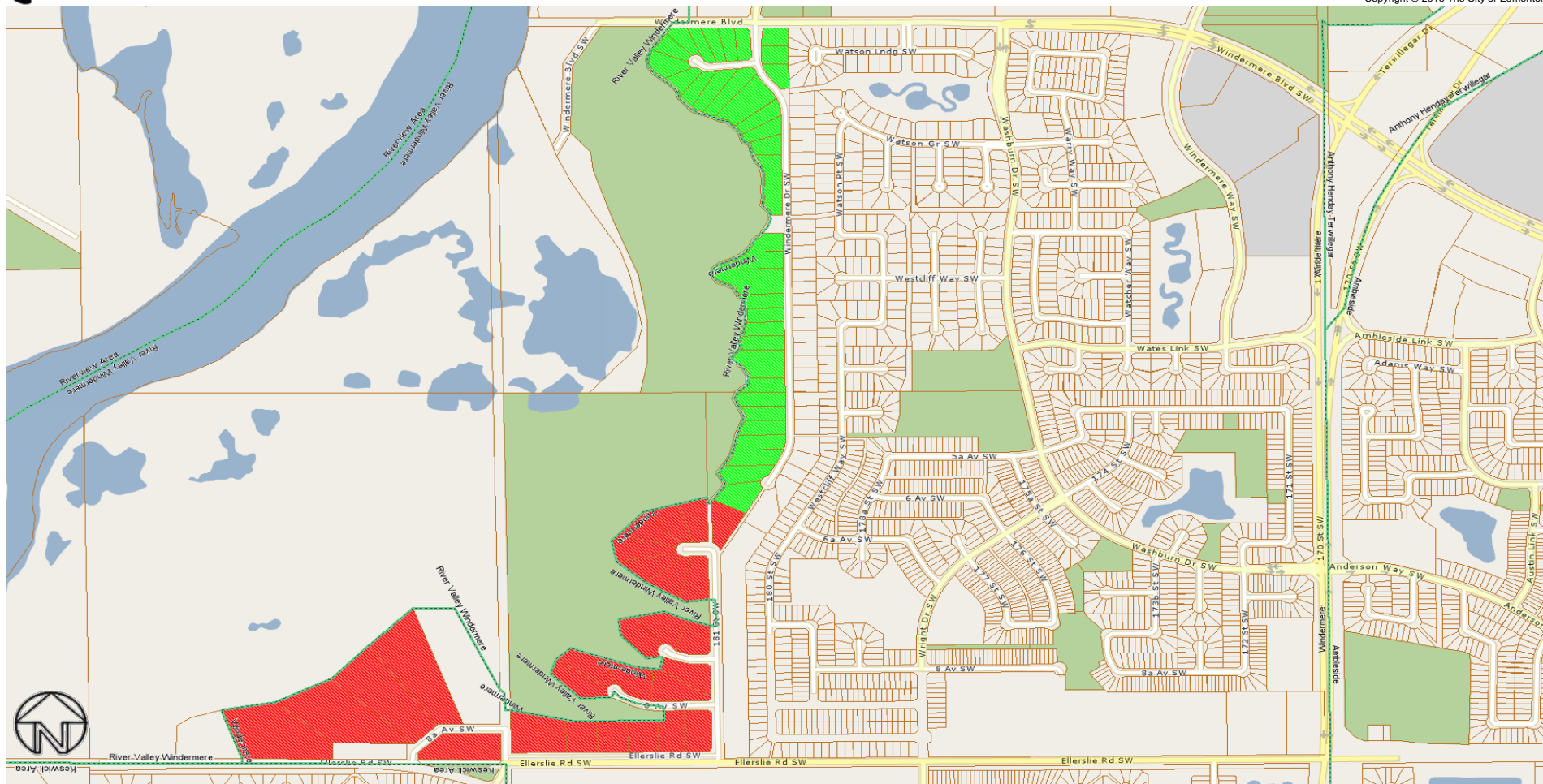


Rural Residential Study Area - 3079 (Ward Heights / Reppert Heights) - Rural South East Neighbourhood

All rights reserved.

The information provided by this map is for reference purpose only. The City of Edmonton disclaims any liability for the use of this map.

This map may not be published, broadcast, redrawn or redistributed in whole or in part without the express written permission of the City of Edmonton, Financial Services and Utilities Department.



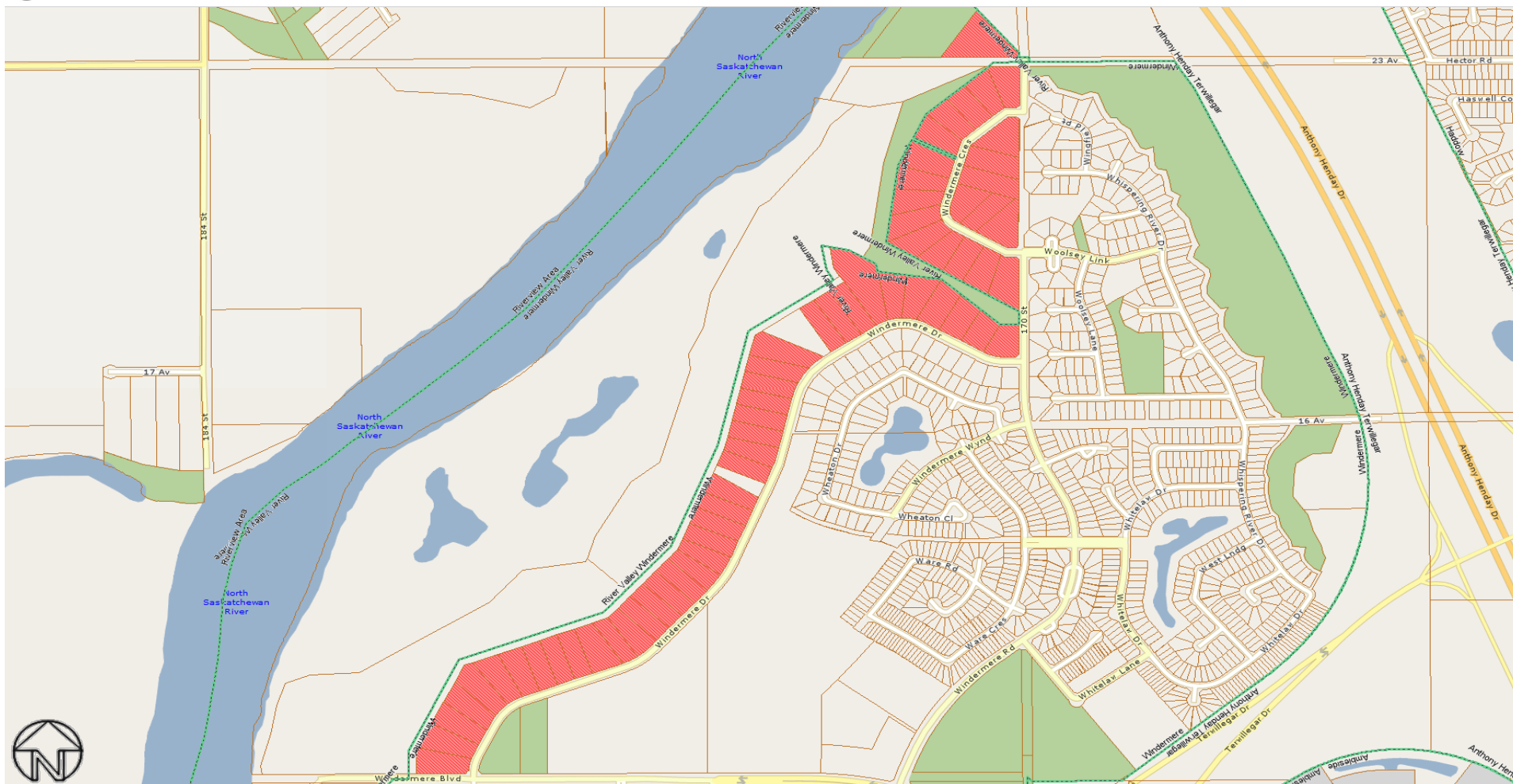
Rural Residential Study Areas - Windermere Neighbourhood

- 3082 (West Point Estates)
- 3084 (Windermere Ridge)

All rights reserved.

The information provided by this map is for reference purpose only. The City of Edmonton disclaims any liability for the use of this map.

This map may not be published, broadcast, redrawn or redistributed in whole or in part without the express written permission of the City of Edmonton, Financial Services and Utilities Department.



Rural Residential Study Area - 3083 (Windermere Estates) - Windermere Neighbourhood

All rights reserved.

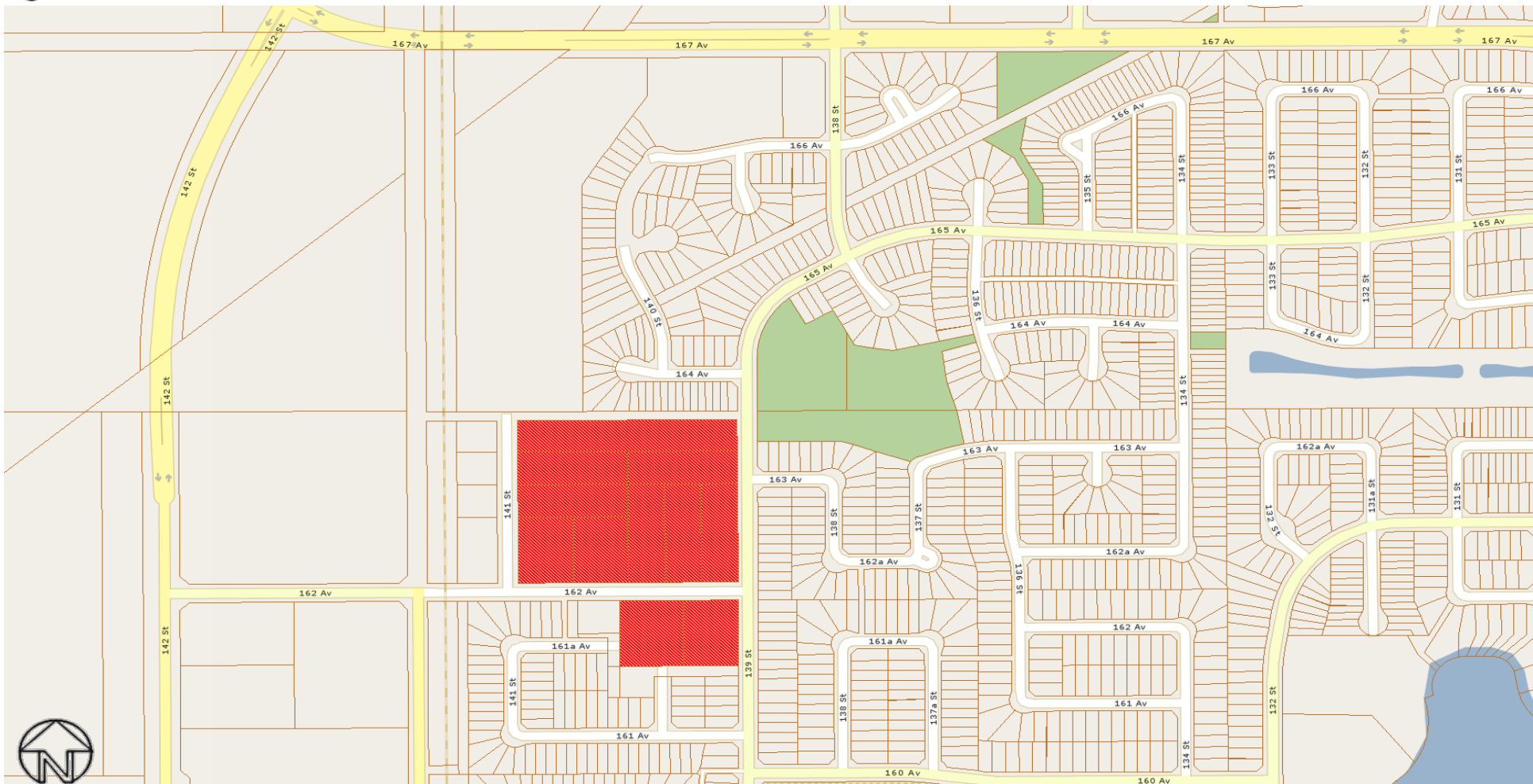
The information provided by this map is for reference purpose only. The City of Edmonton disclaims any liability for the use of this map. This map may not be published, broadcast, redrawn or redistributed in whole or in part without the express written permission of the City of Edmonton, Financial Services and Utilities Department.



The information provided by this map is for reference purpose only. The City of Edmonton disclaims any liability for the use of this map. This map may not be published, broadcast, redrawn or redistributed in whole or in part without the express written permission of the City of Edmonton, Financial Services and Utilities Department.



The information provided by this map is for reference purpose only. The City of Edmonton disclaims any liability for the use of this map. This map may not be published, broadcast, redrawn or redistributed in whole or in part without the express written permission of the City of Edmonton, Financial Services and Utilities Department.



Rural Residential Study Area - 3089 (Carlton) - Carlton Neighbourhood

All rights reserved.

The information provided by this map is for reference purpose only. The City of Edmonton disclaims any liability for the use of this map.

This map may not be published, broadcast, redrawn or redistributed in whole or in part without the express written permission of the City of Edmonton, Financial Services and Utilities Department.