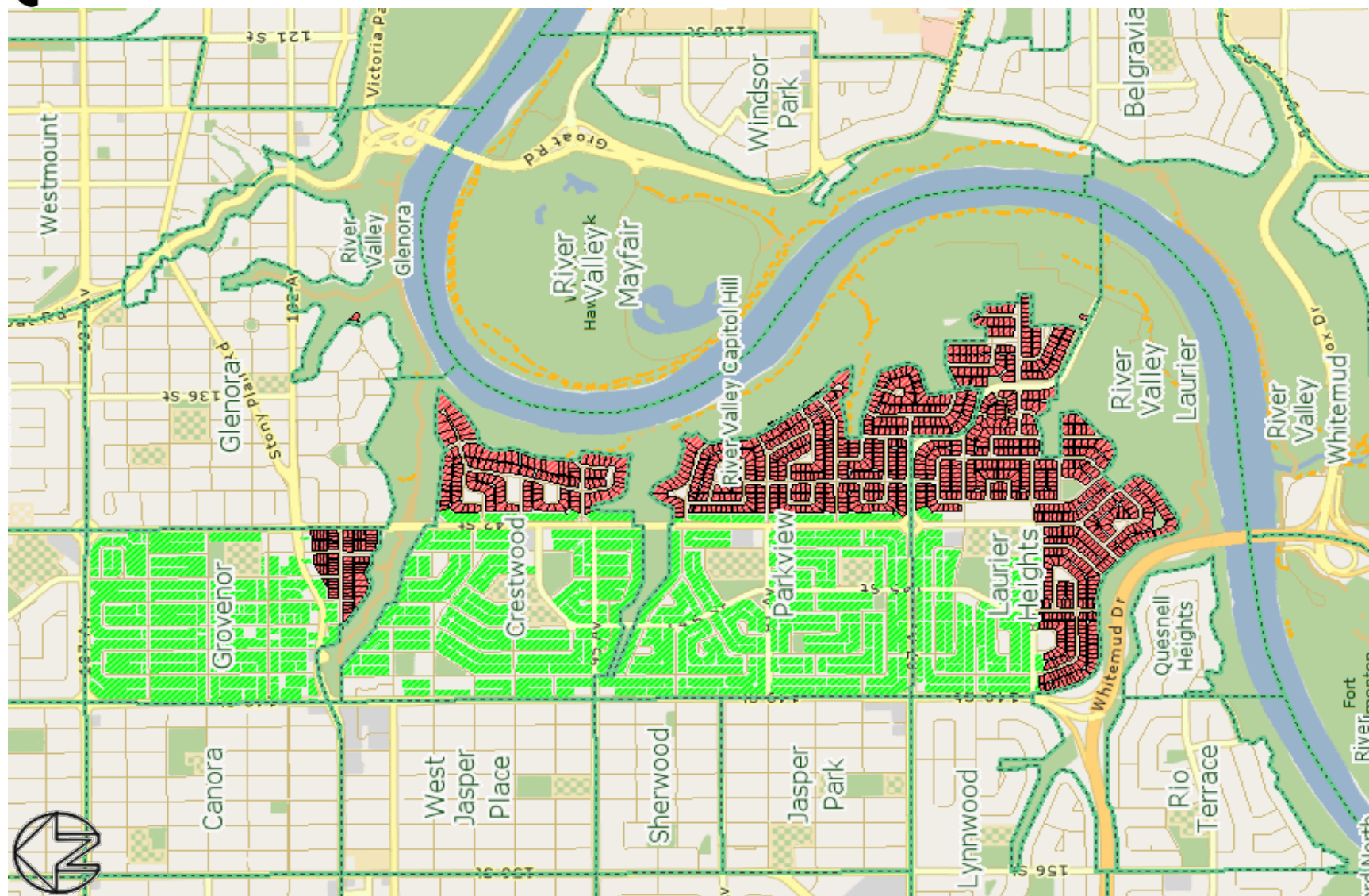


City of Edmonton
Residential Neighbourhood Study Areas
2016 Assessment

Table of Contents

<u>Study Area No.</u>	<u>Neighbourhood Study Area</u>	<u>Page No.</u>
2101	Grovenor, Crestwood, Parkview, Laurier Heights	1
2102	Grovenor, Crestwood, Parkview, Laurier Heights	1
2103	Athlone	2
2104	Terwillegar Towne	3
2108	Summerside	4
2109	Summerside	4
2110	Summerside	4
2112	Donsdale	5
2129	Aspen Gardens, Westbrook Estates	6
2130	Westbrook Estates	6
2175	Riverdale	7
2210	Mactaggart	8
2500	Belgravia	9
3004	Glenora	10
3014	Glenora	10
3019	Terwillegar Towne, South Terwillegar	3
3023	Glenora	10
3037	Oleskiw	11
3038	Oleskiw	11
3040	Westmount	12
3090	Rundle Heights	13
3101	Strathcona	14
3200	Wedgewood Heights	15
3201	Wedgewood Heights, Cameron Heights	16
3203	Highlands, Capilano, Gold Bar	17
3204	Ambleside	18
3205	Windsor Park	19
3206	Ramsay Heights	20
3208	Bellevue, Highlands, Beverly Heights	21
3209	Windermere	29/30
3212	Rhatigan Ridge	22
3213	South Terwillegar	3
3215/16	First Place and Seniors Housing Programs	
	North Market Area	23
	West Market Area	24
	River Valley Market Area	25
	Southwest Market Area	26
	Southeast Market Area	27

3217	Rio Terrace and Quesnell Heights	28
3220	Windermere	29/30
3221	Windermere	30
3222	Windermere	31
3223	Belgravia	32
3224	Brookside	33
3227	Rio Terrace	34
3229	Oleskiw	11
3230	Cameron Heights	35
3225	Rhatigan Ridge	36
3226	Henderson Estates	37
3231	Forest Heights	38

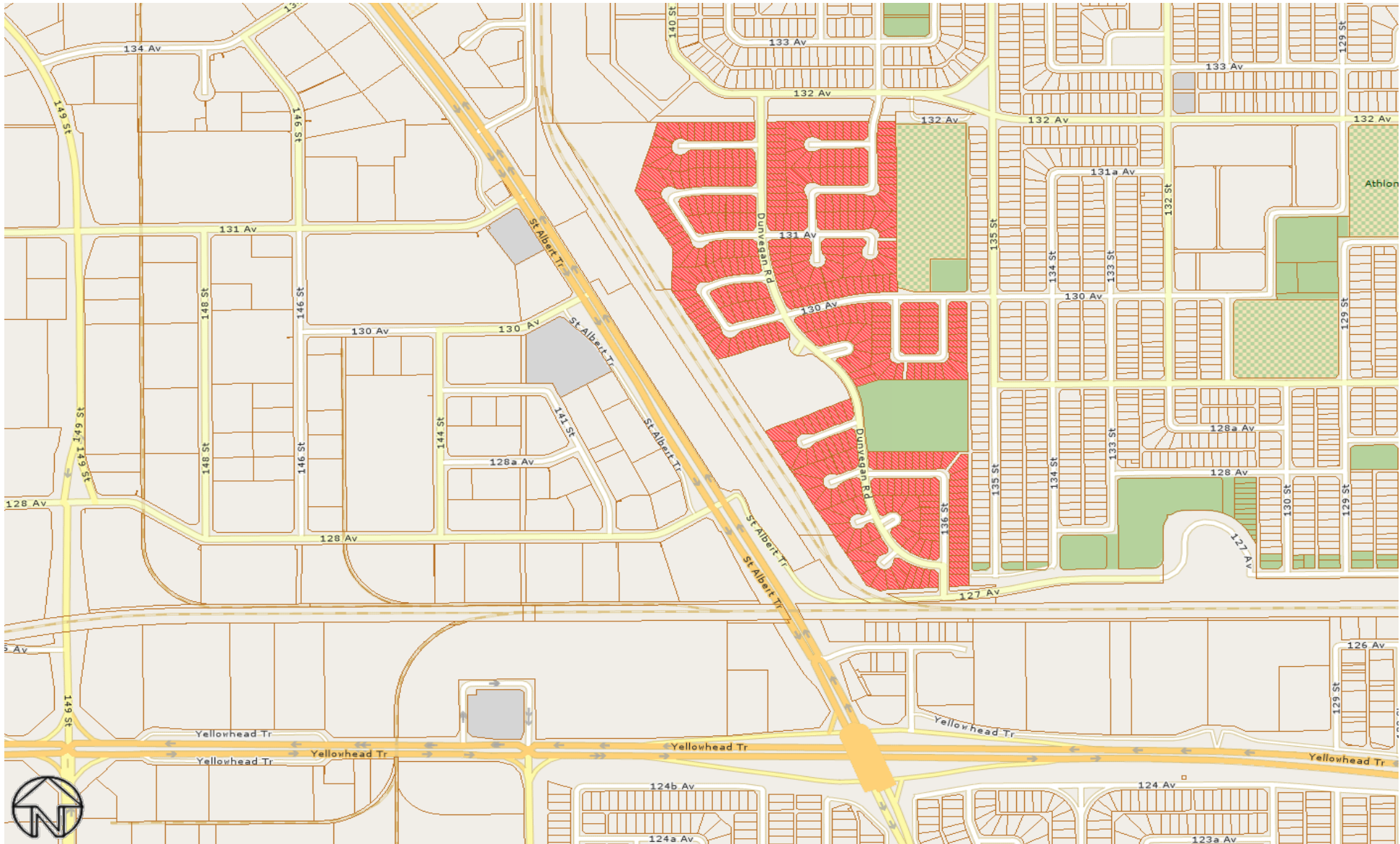


- 2101 (Grovenor, Crestwood, Parkview, Laurier Heights)
- 2102 (Grovenor, Crestwood, Parkview, Laurier Heights)

All rights reserved.

The information provided by this map is for reference purpose only. The City of Edmonton disclaims any liability for the use of this map.

This map may not be published, broadcast, redrawn or redistributed in whole or in part without the express written permission of the City of Edmonton, Financial Services and Utilities Department.

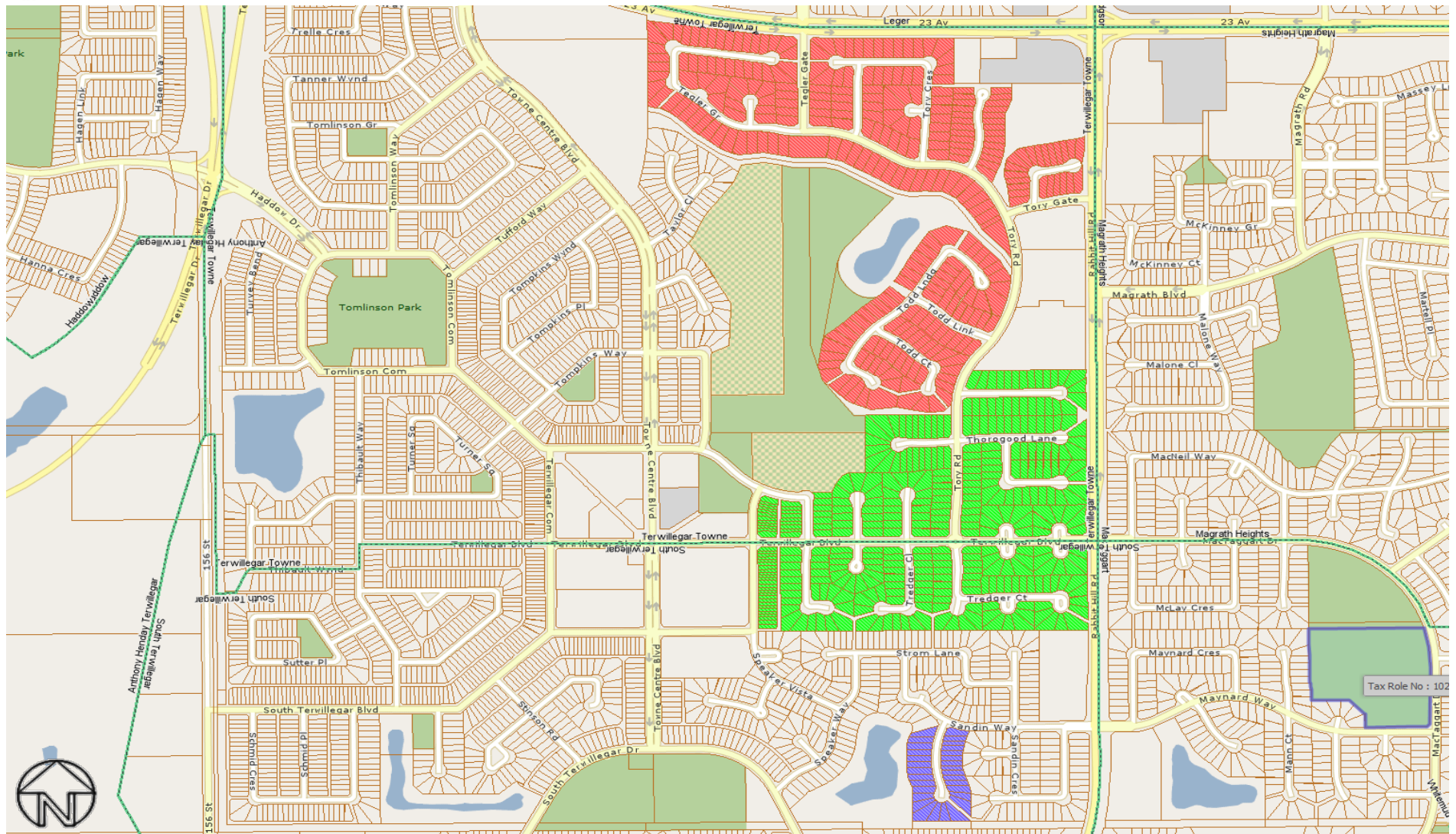


Neighbourhood Study Area - 2103 (Athlone)

All rights reserved.

The information provided by this map is for reference purpose only. The City of Edmonton disclaims any liability for the use of this map.

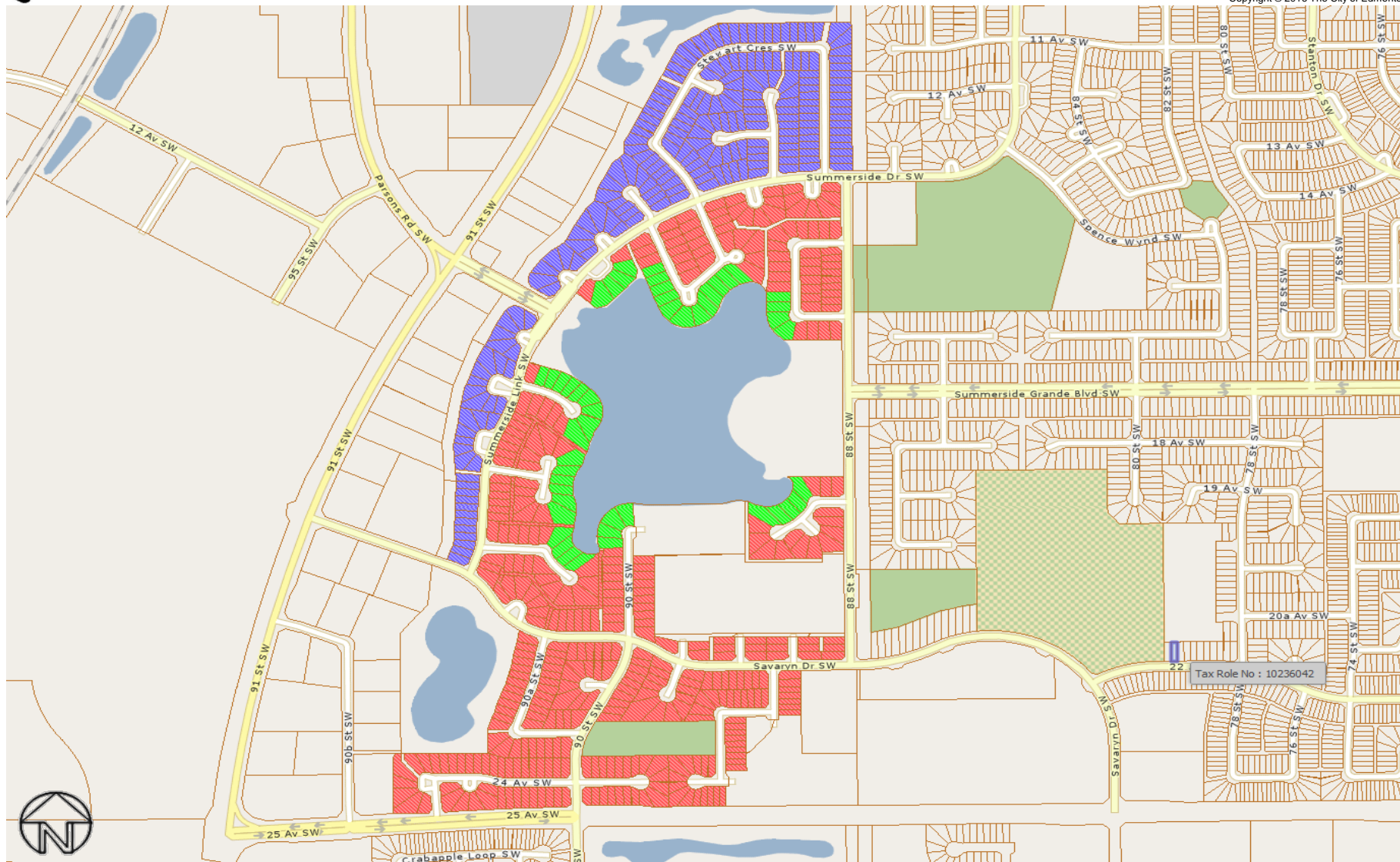
This map may not be published, broadcast, redrawn or redistributed in whole or in part without the express written permission of the City of Edmonton, Financial Services and Utilities Department.



- 2104 (Terwillegar Towne)
- 3019 (Terwillegar Towne, South Terwillegar)
- 3213 (South Terwillegar)

All rights reserved.

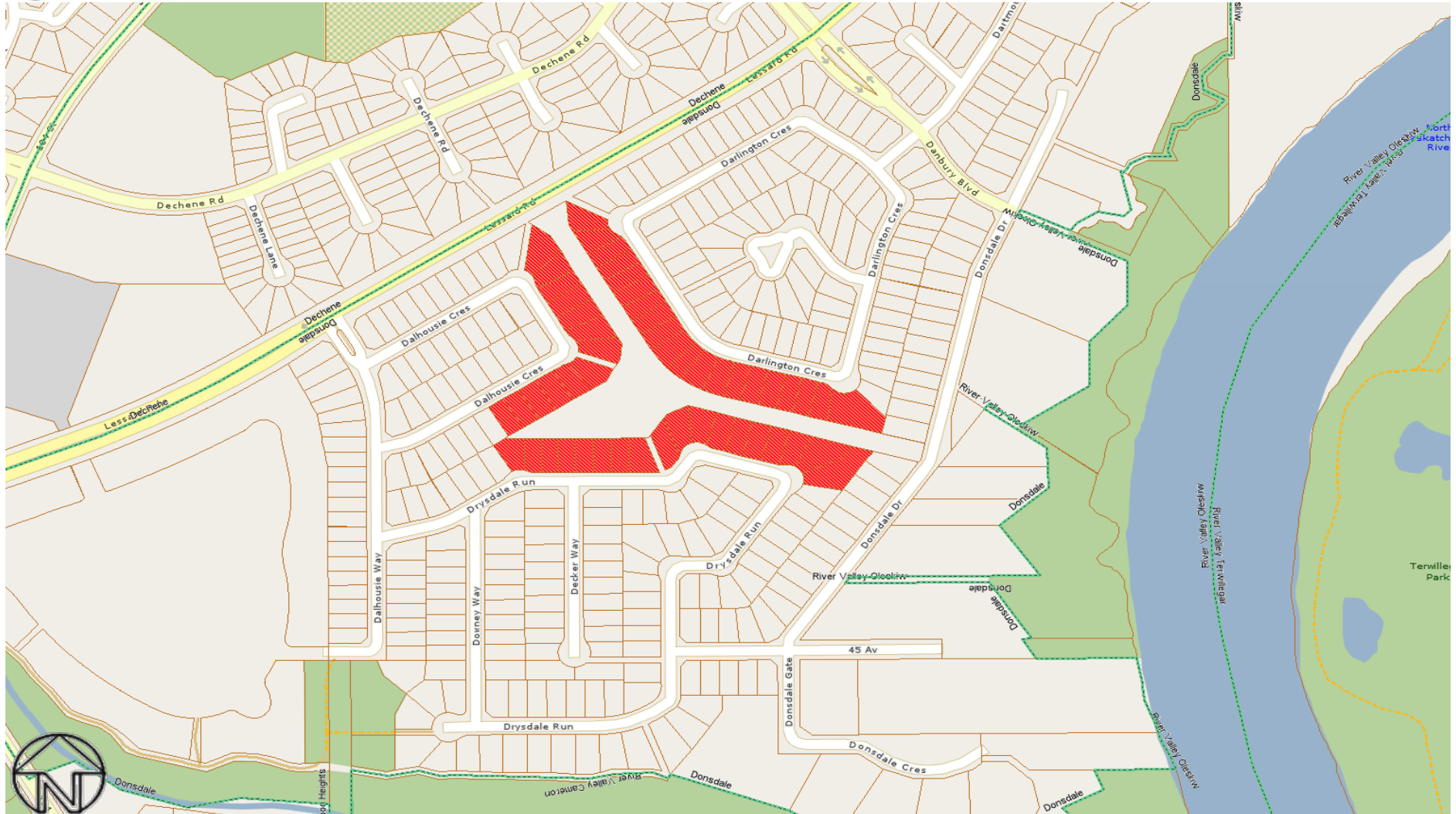
The information provided by this map is for reference purpose only. The City of Edmonton disclaims any liability for the use of this map. This map may not be published, broadcast, redrawn or redistributed in whole or in part without the express written permission of the City of Edmonton, Financial Services and Utilities Department.



- 2109 (Summerside)
- 2108 (Summerside)
- 2110 (Summerside)

All rights reserved.

The information provided by this map is for reference purpose only. The City of Edmonton disclaims any liability for the use of this map. This map may not be published, broadcast, redrawn or redistributed in whole or in part without the express written permission of the City of Edmonton, Financial Services and Utilities Department.

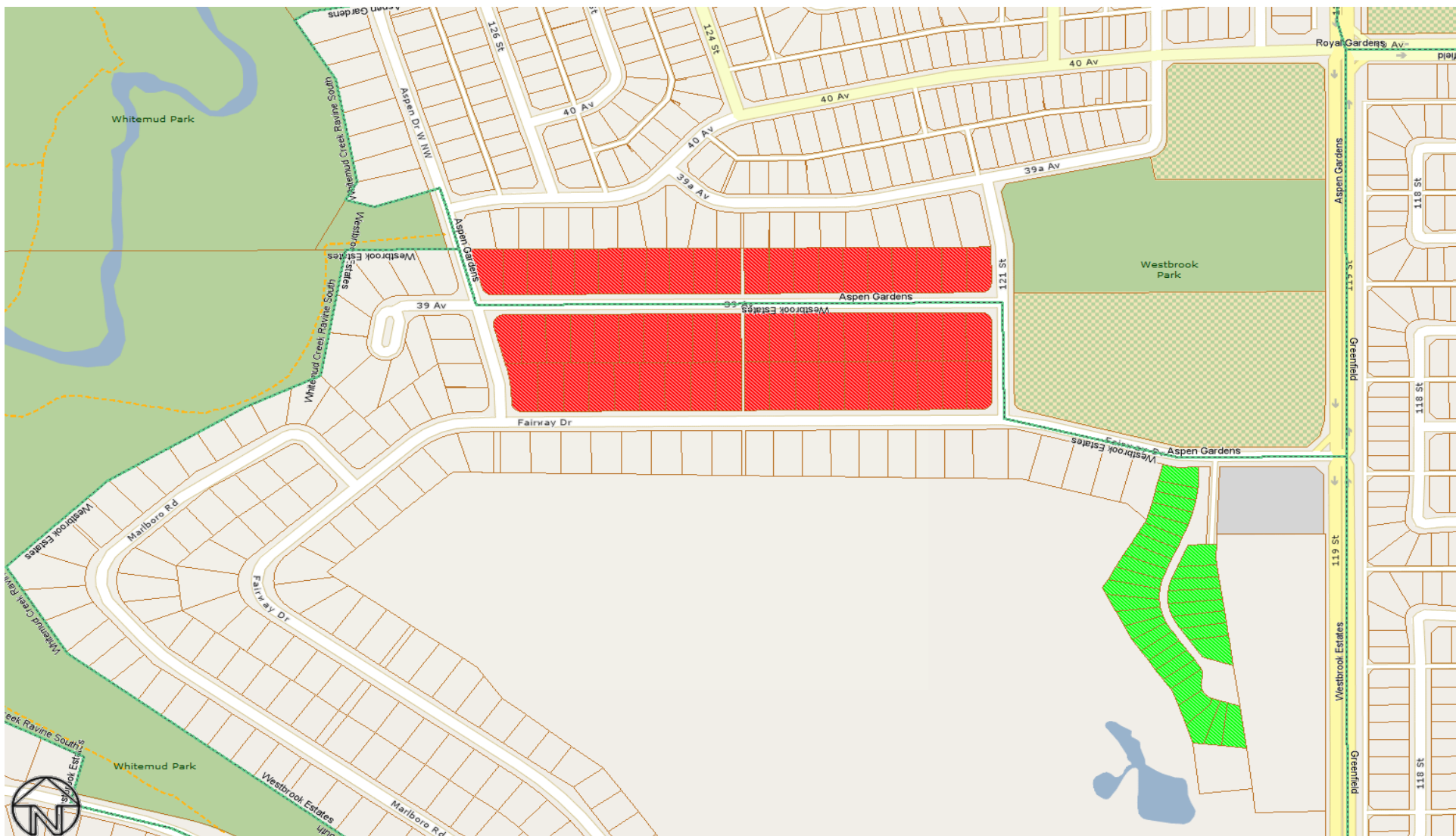


Neighbourhood Study Area - 2112 (Donsdale)

All rights reserved.

The information provided by this map is for reference purpose only. The City of Edmonton disclaims any liability for the use of this map.

This map may not be published, broadcast, redrawn or redistributed in whole or in part without the express written permission of the City of Edmonton, Financial Services and Utilities Department.



- 2129 (Aspen Gardens and Westbrook Estates)
- 2130 (Westbrook Estate)

All rights reserved.

The information provided by this map is for reference purpose only. The City of Edmonton disclaims any liability for the use of this map. This map may not be published, broadcast, redrawn or redistributed in whole or in part without the express written permission of the City of Edmonton, Financial Services and Utilities Department.

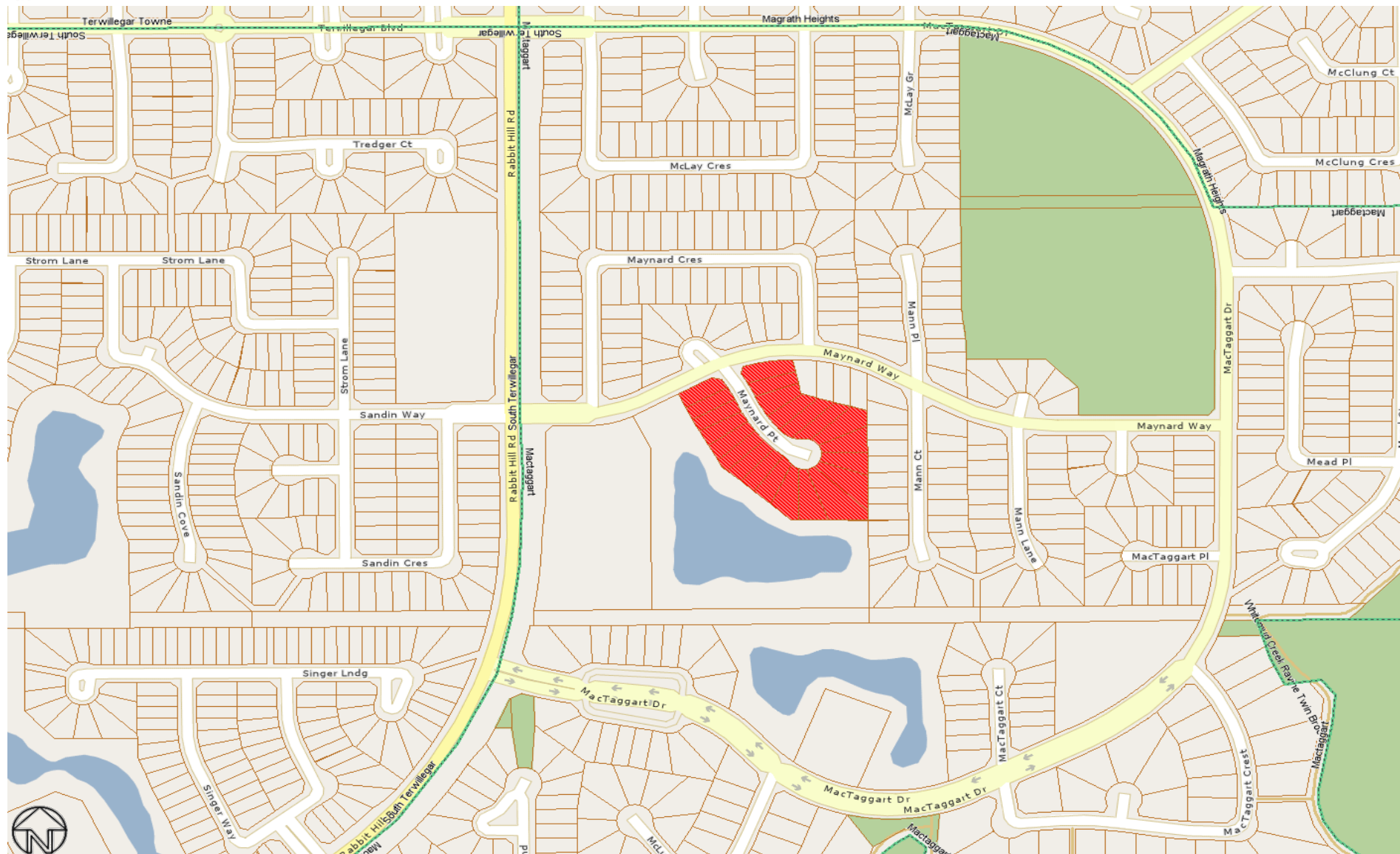


Neighbourhood Study Area - 2175 (Riverdale)

All rights reserved.

The information provided by this map is for reference purpose only. The City of Edmonton disclaims any liability for the use of this map.

This map may not be published, broadcast, redrawn or redistributed in whole or in part without the express written permission of the City of Edmonton, Financial Services and Utilities Department.

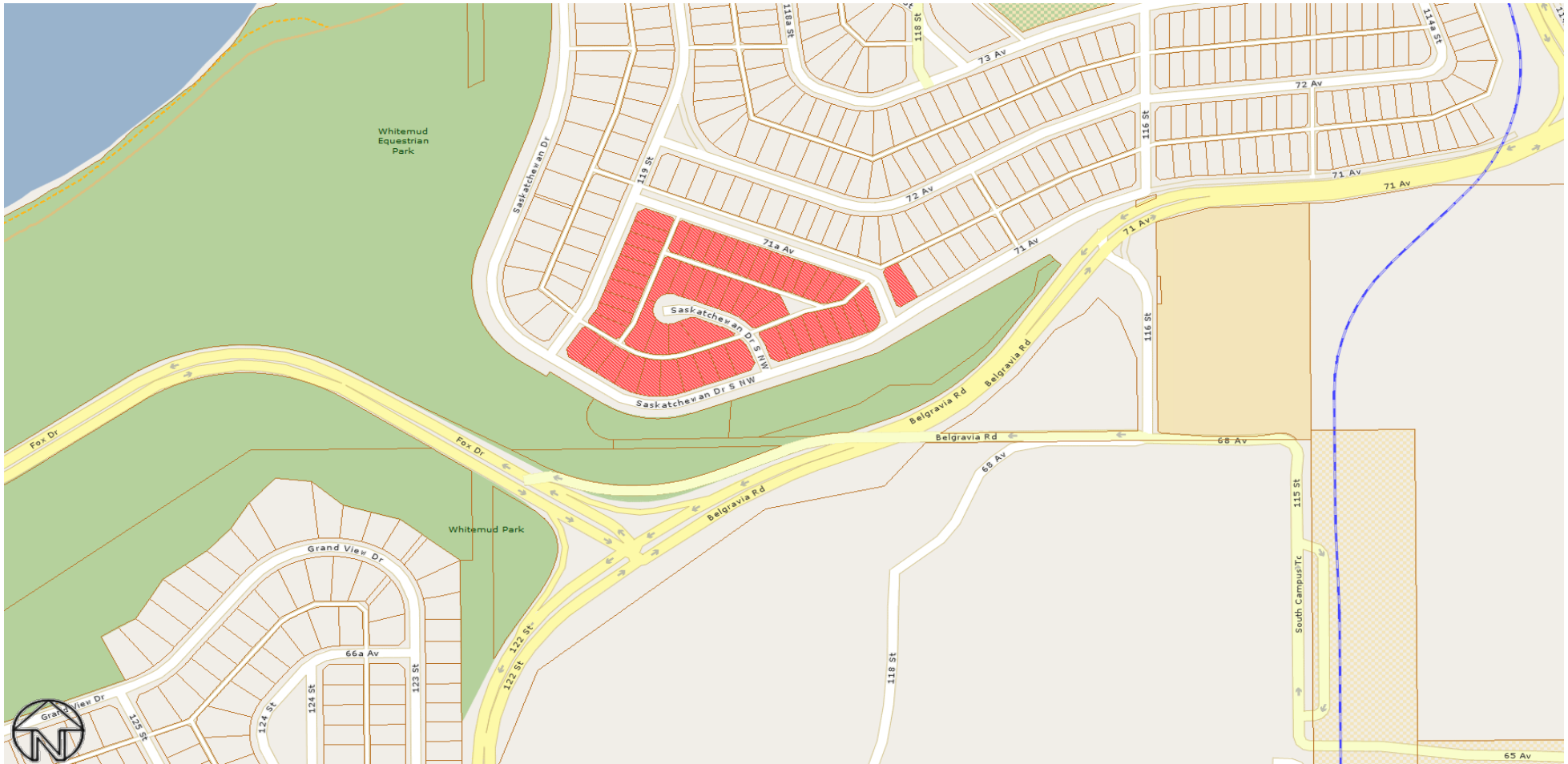


Neighbourhood Study Area - 2210 (Mactaggart)

All rights reserved.

The information provided by this map is for reference purpose only. The City of Edmonton disclaims any liability for the use of this map.

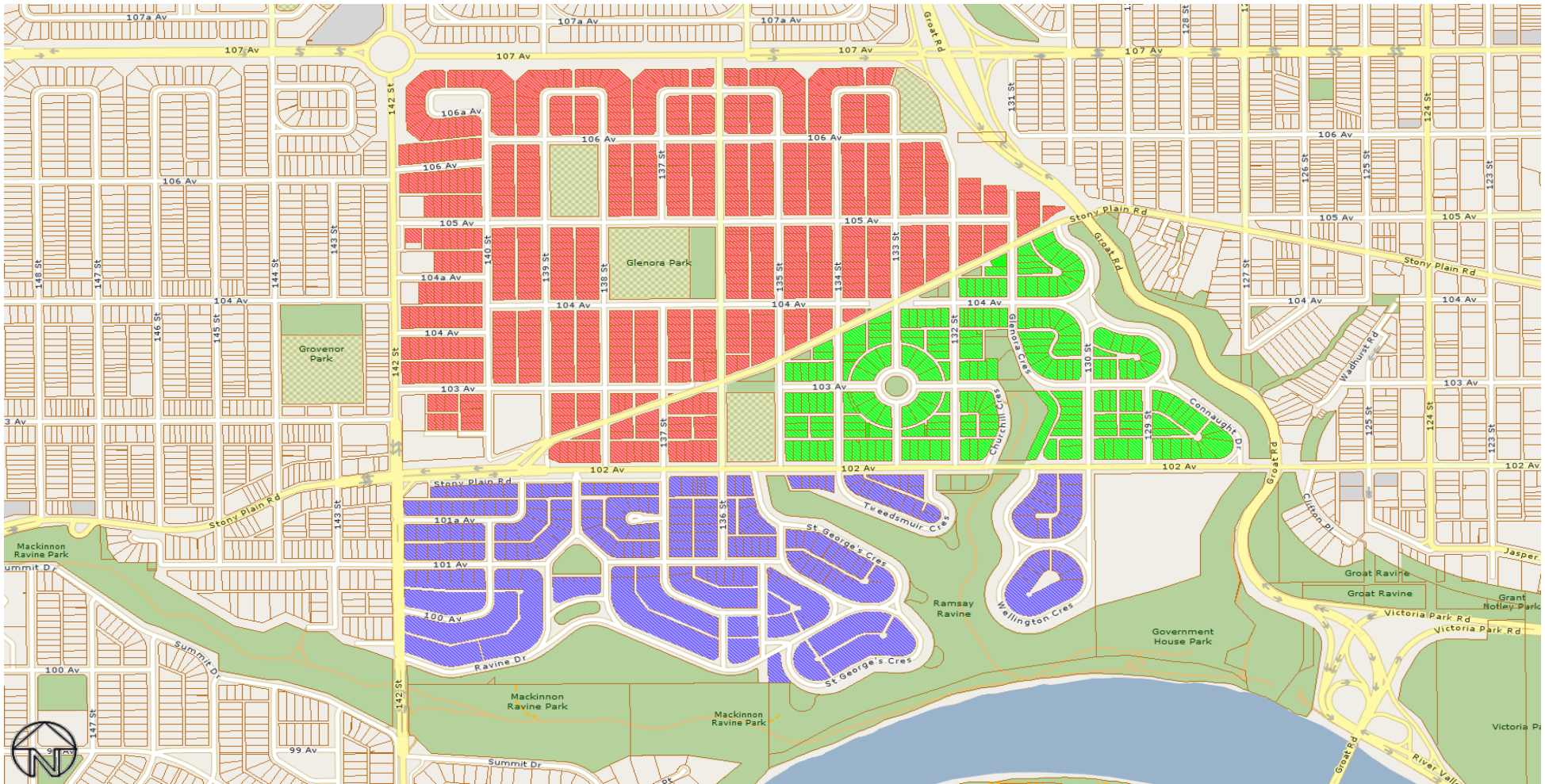
This map may not be published, broadcast, redrawn or redistributed in whole or in part without the express written permission of the City of Edmonton, Financial Services and Utilities Department.



Neighbourhood Study Area - 2500 (Belgravia)

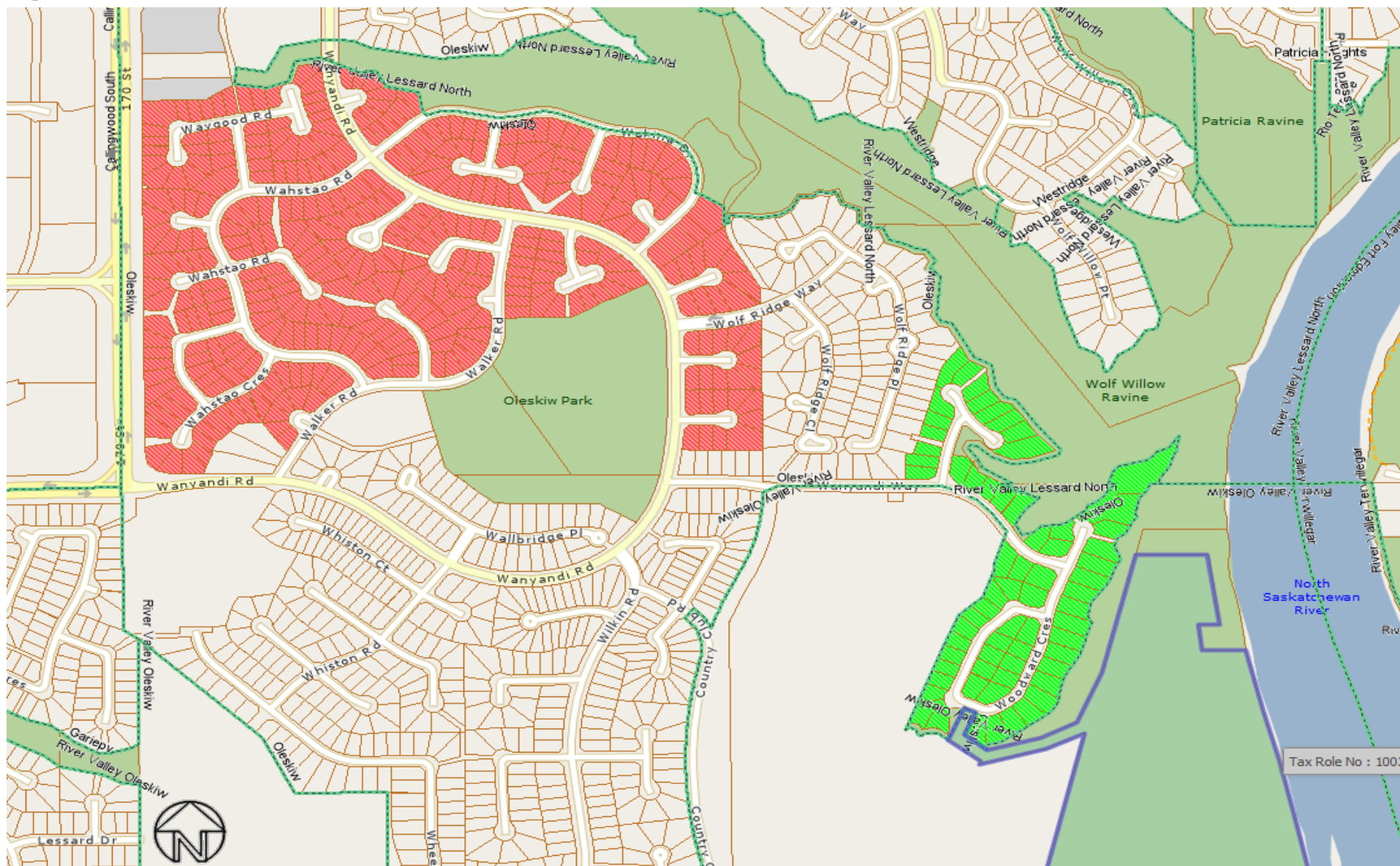
All rights reserved.

The information provided by this map is for reference purpose only. The City of Edmonton disclaims any liability for the use of this map. This map may not be published, broadcast, redrawn or redistributed in whole or in part without the express written permission of the City of Edmonton, Financial Services and Utilities Department.



- 3004 (Glenora)
- 3014 (Glenora)
- 3023 (Glenora)

All rights reserved.
The information provided by this map is for reference purpose only. The City of Edmonton disclaims any liability for the use of this map.
This map may not be published, broadcast, redrawn or redistributed in whole or in part without the express written permission of the City of Edmonton, Financial Services and Utilities Department.



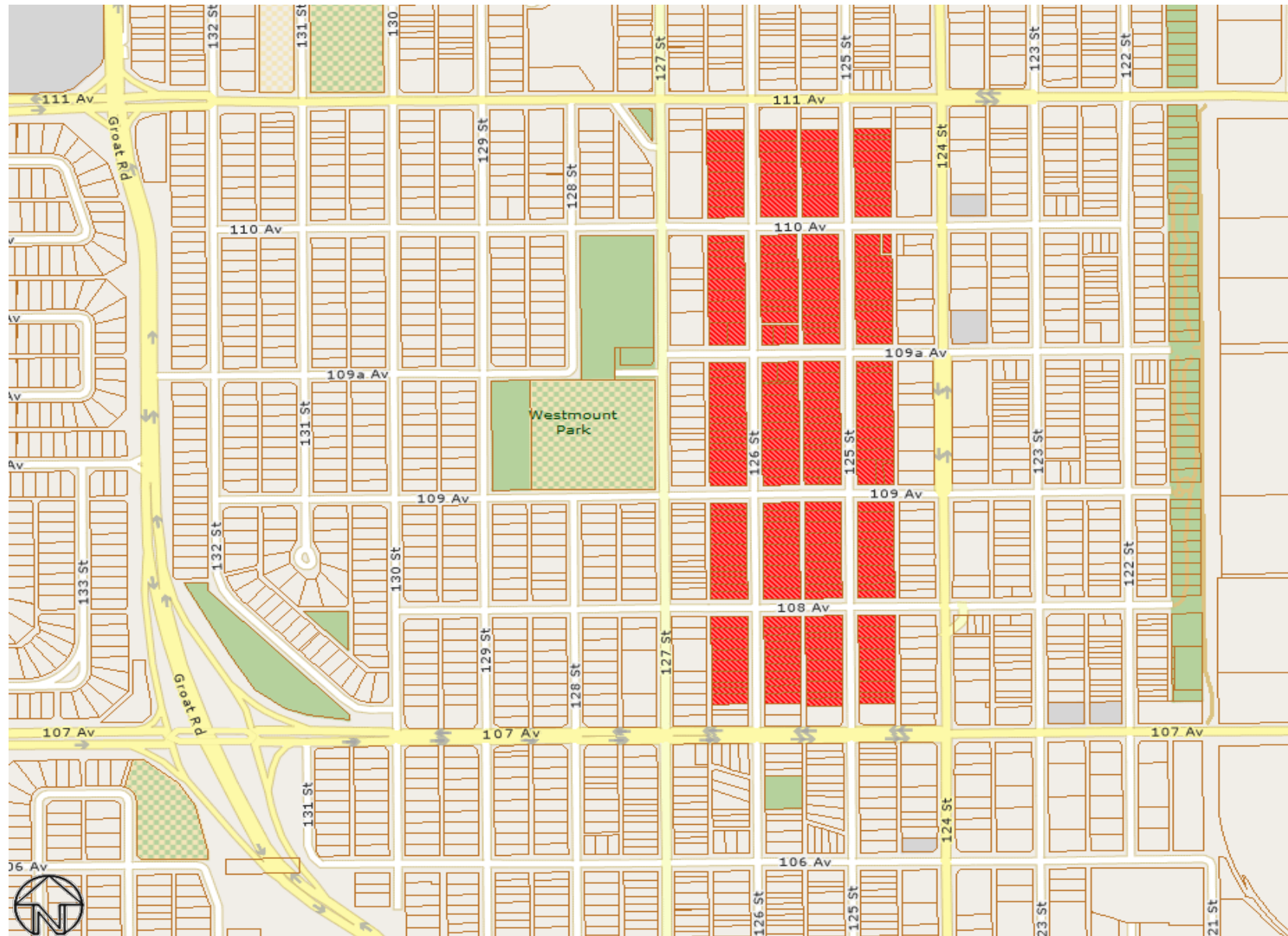
3037 / 3038 (Oleskiw)

3229 (Oleskiw)

All rights reserved.

The information provided by this map is for reference purpose only. The City of Edmonton disclaims any liability for the use of this map.

This map may not be published, broadcast, redrawn or redistributed in whole or in part without the express written permission of the City of Edmonton, Financial Services and Utilities Department.

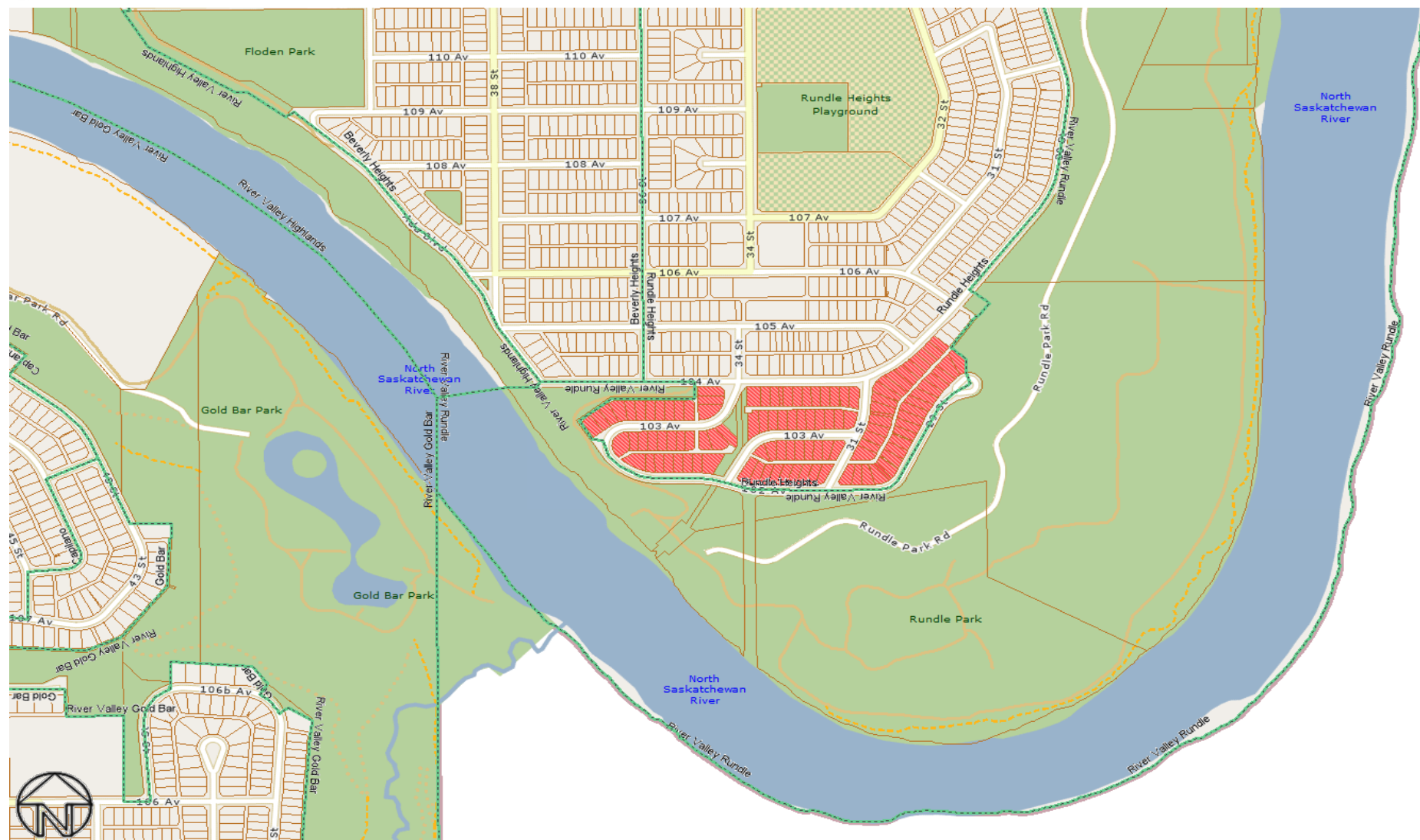


Neighbourhood Study Area - 3040 (Westmount)

All rights reserved.

The information provided by this map is for reference purpose only. The City of Edmonton disclaims any liability for the use of this map.

This map may not be published, broadcast, redrawn or redistributed in whole or in part without the express written permission of the City of Edmonton, Financial Services and Utilities Department.

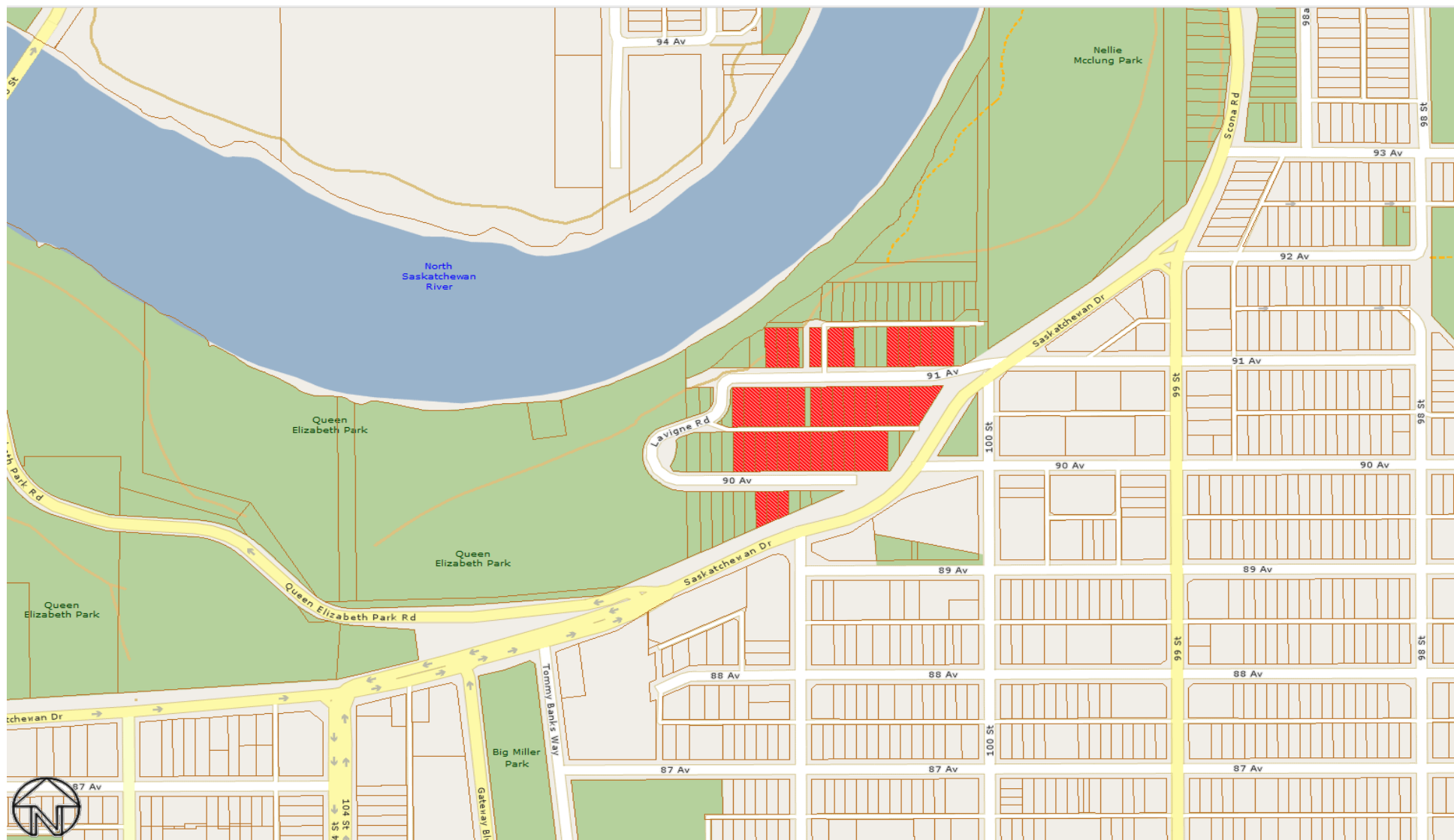


Neighbourhood Study Area - 3090 (Rundle Heights)

All rights reserved.

The information provided by this map is for reference purpose only. The City of Edmonton disclaims any liability for the use of this map.

This map may not be published, broadcast, redrawn or redistributed in whole or in part without the express written permission of the City of Edmonton, Financial Services and Utilities Department.

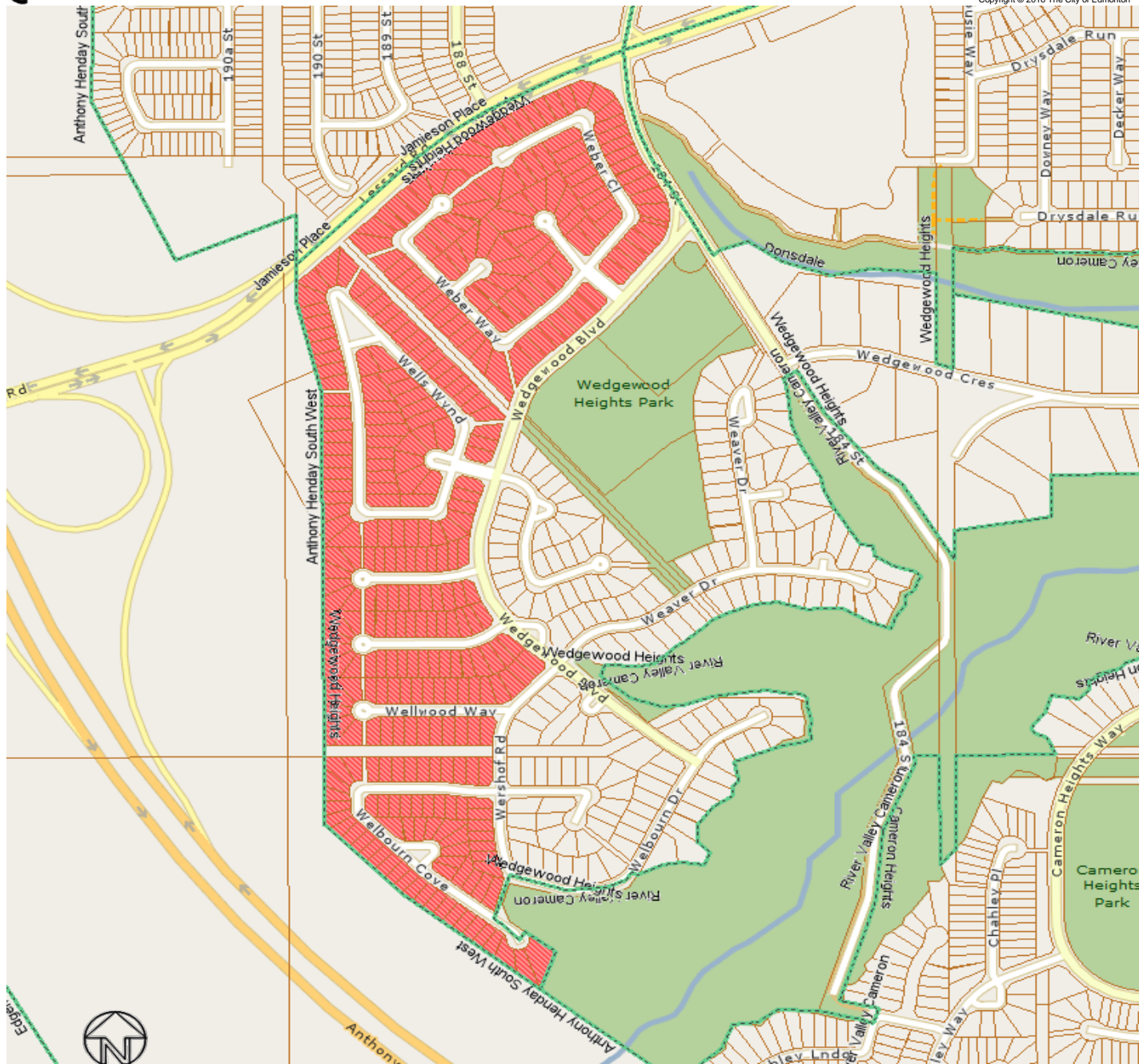


Neighbourhood Study Area - 3101 (Strathcona)

All rights reserved.

The information provided by this map is for reference purpose only. The City of Edmonton disclaims any liability for the use of this map.

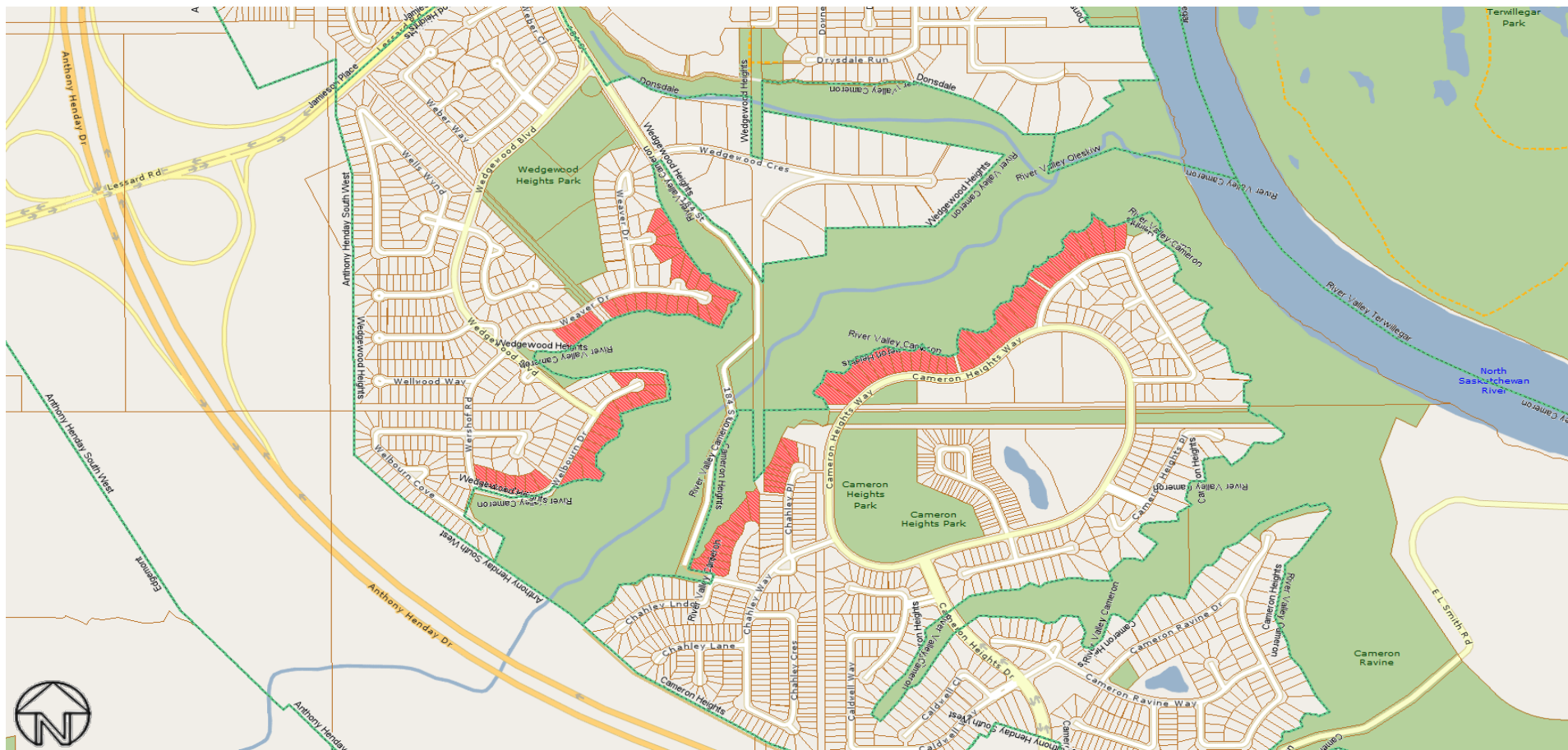
This map may not be published, broadcast, redrawn or redistributed in whole or in part without the express written permission of the City of Edmonton, Financial Services and Utilities Department.



Neighbourhood Study Area - 3200 (Wedgewood Heights)

All rights reserved.

The information provided by this map is for reference purpose only. The City of Edmonton disclaims any liability for the use of this map. This map may not be published, broadcast, redrawn or redistributed in whole or in part without the express written permission of the City of Edmonton, Financial Services and Utilities Department.

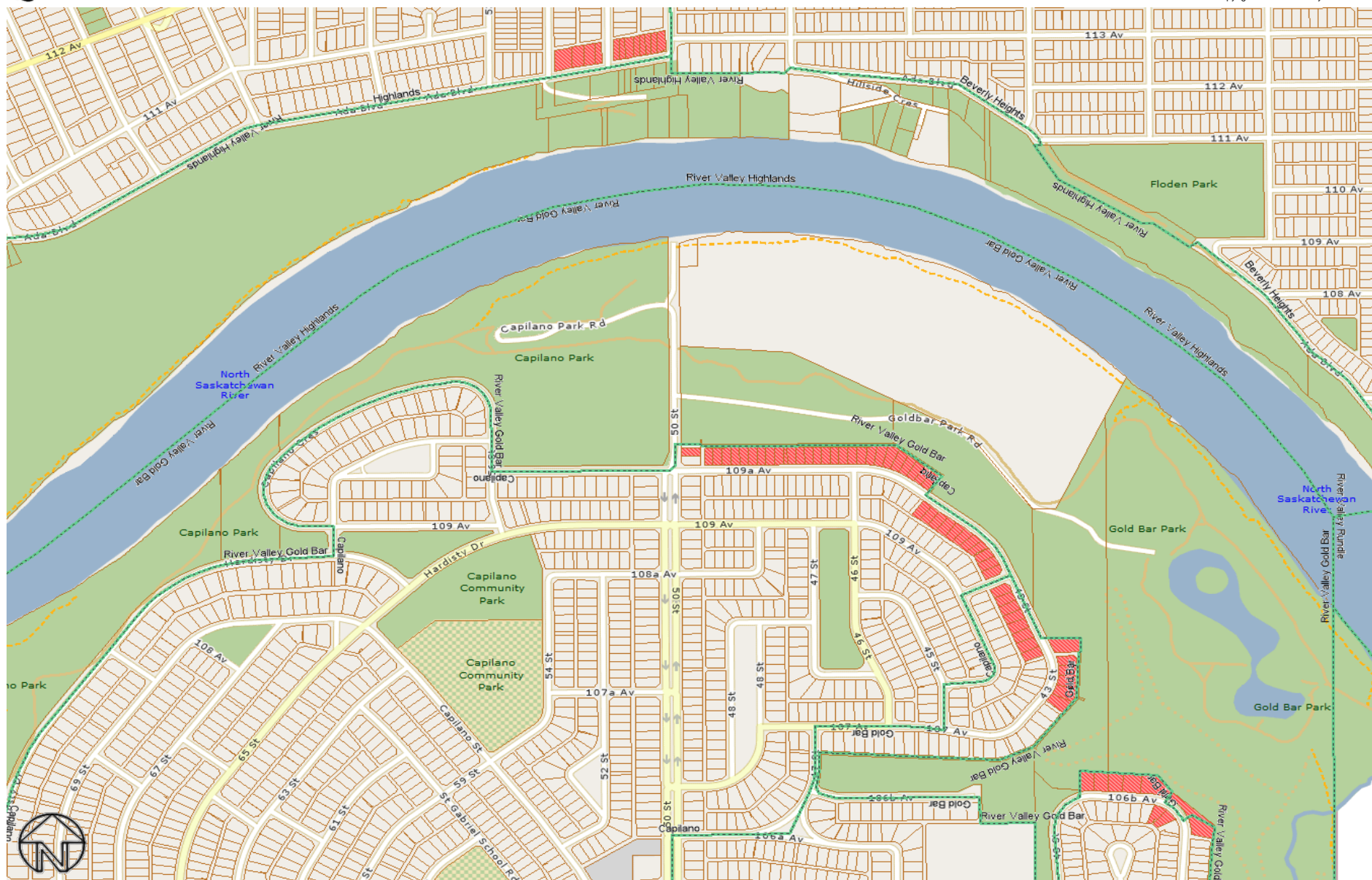


Neighbourhood Study Area - 3201 (Wedgewood Heights and Cameron Heights)

All rights reserved.

The information provided by this map is for reference purpose only. The City of Edmonton disclaims any liability for the use of this map.

This map may not be published, broadcast, redrawn or redistributed in whole or in part without the express written permission of the City of Edmonton, Financial Services and Utilities Department.



Neighbourhood Study Area - 3203 (Highlands, Capilano and Gold Bar)

All rights reserved.

The information provided by this map is for reference purpose only. The City of Edmonton disclaims any liability for the use of this map.

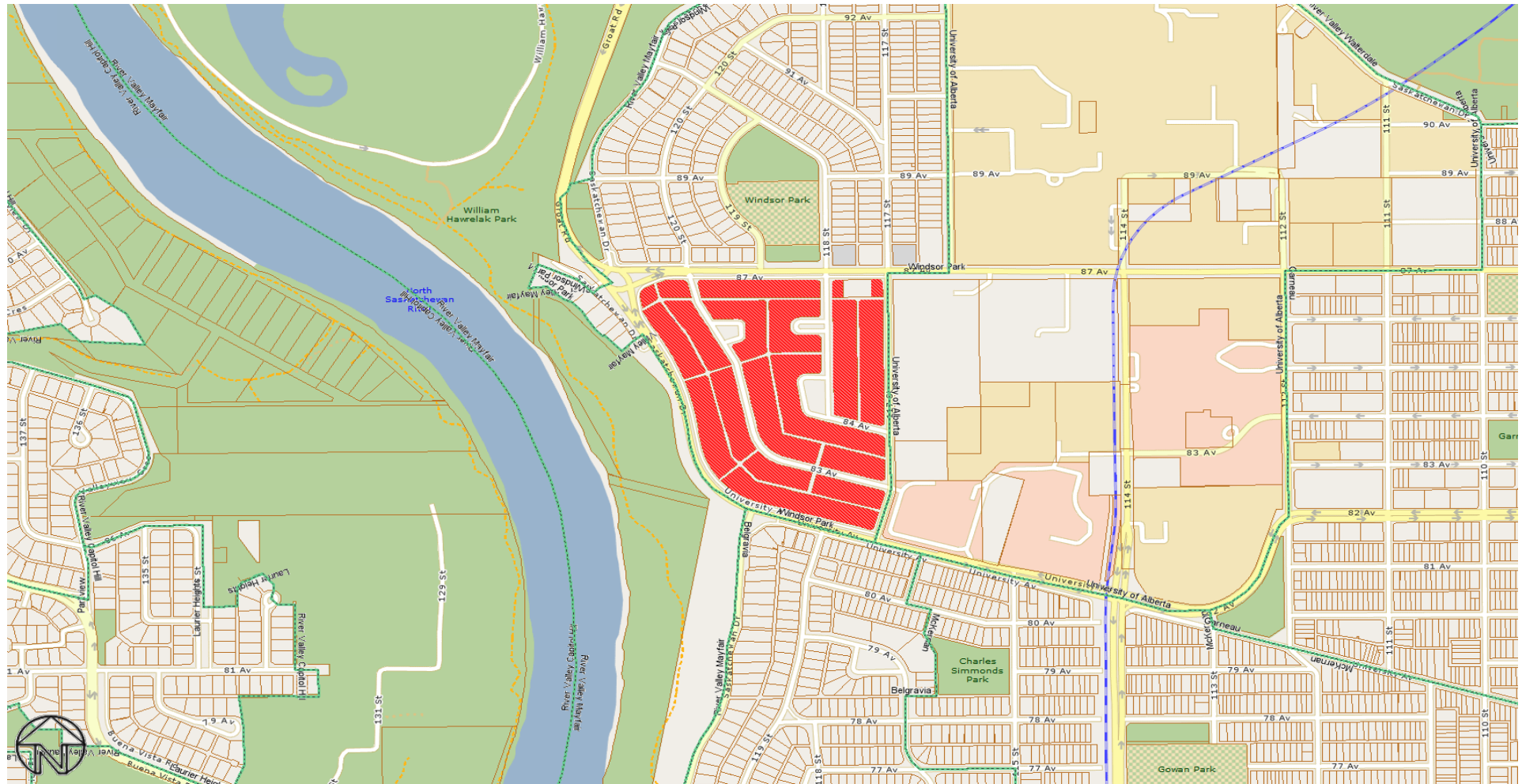
This map may not be published, broadcast, redrawn or redistributed in whole or in part without the express written permission of the City of Edmonton, Financial Services and Utilities Department.



Neighbourhood Study Area - 3204 (Ambleside)

All rights reserved.

The information provided by this map is for reference purpose only. The City of Edmonton disclaims any liability for the use of this map. This map may not be published, broadcast, redrawn or redistributed in whole or in part without the express written permission of the City of Edmonton, Financial Services and Utilities Department.

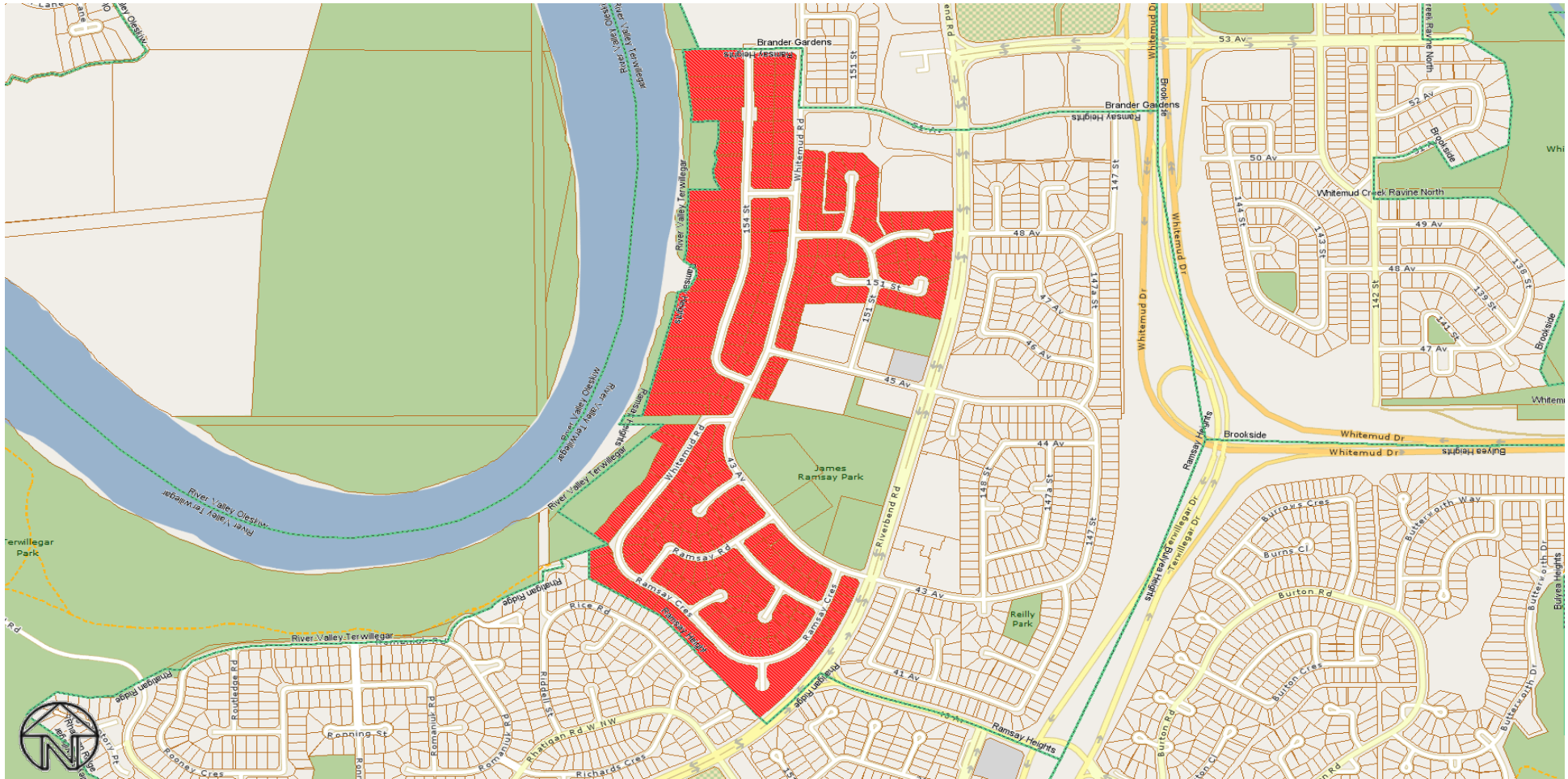


Neighbourhood Study Area - 3205 (Windsor Park)

All rights reserved.

The information provided by this map is for reference purpose only. The City of Edmonton disclaims any liability for the use of this map.

This map may not be published, broadcast, redrawn or redistributed in whole or in part without the express written permission of the City of Edmonton, Financial Services and Utilities Department.

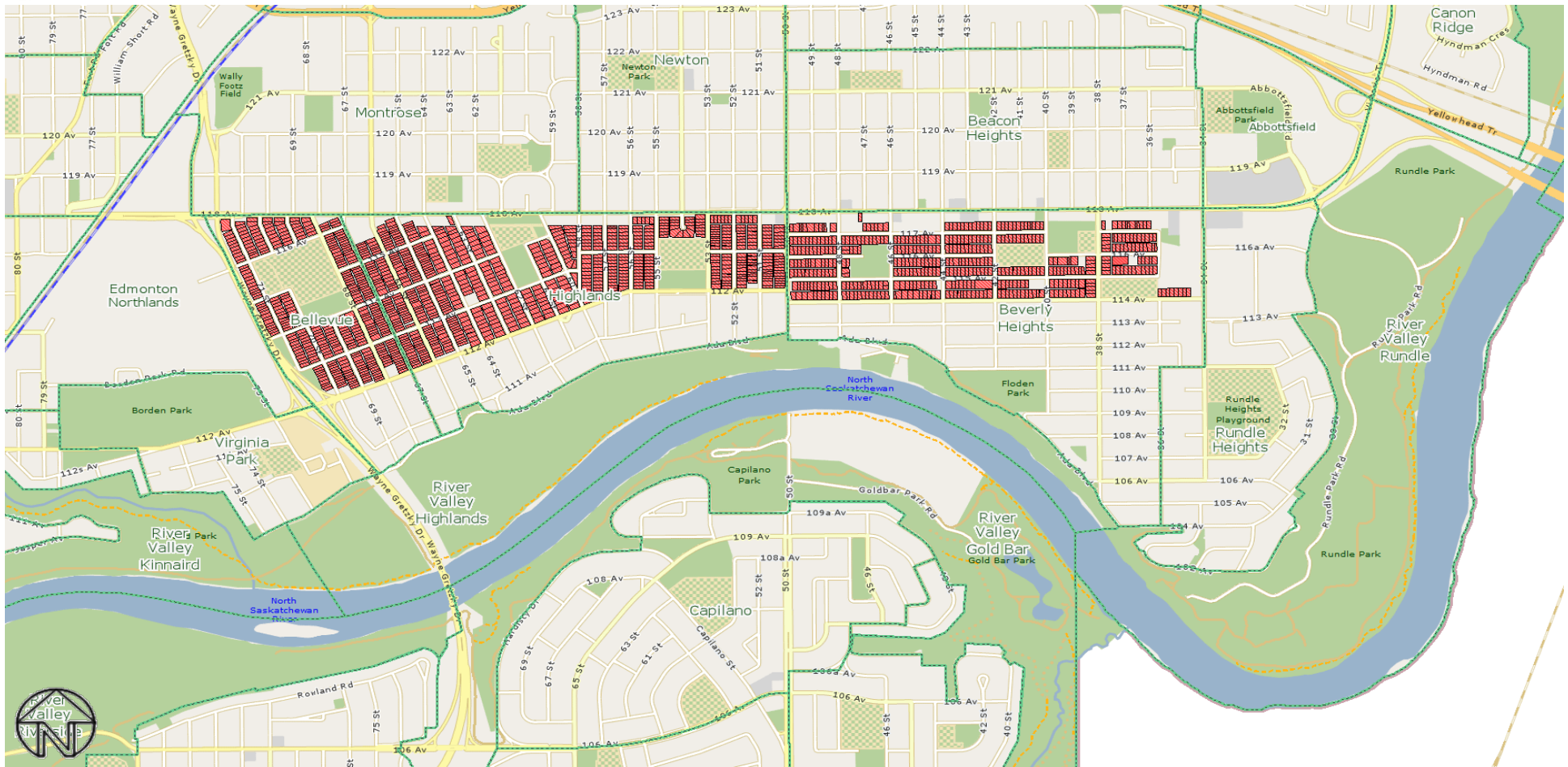


Neighbourhood Study Area - 3206 (Ramsay Heights)

All rights reserved.

The information provided by this map is for reference purpose only. The City of Edmonton disclaims any liability for the use of this map.

This map may not be published, broadcast, redrawn or redistributed in whole or in part without the express written permission of the City of Edmonton, Financial Services and Utilities Department.

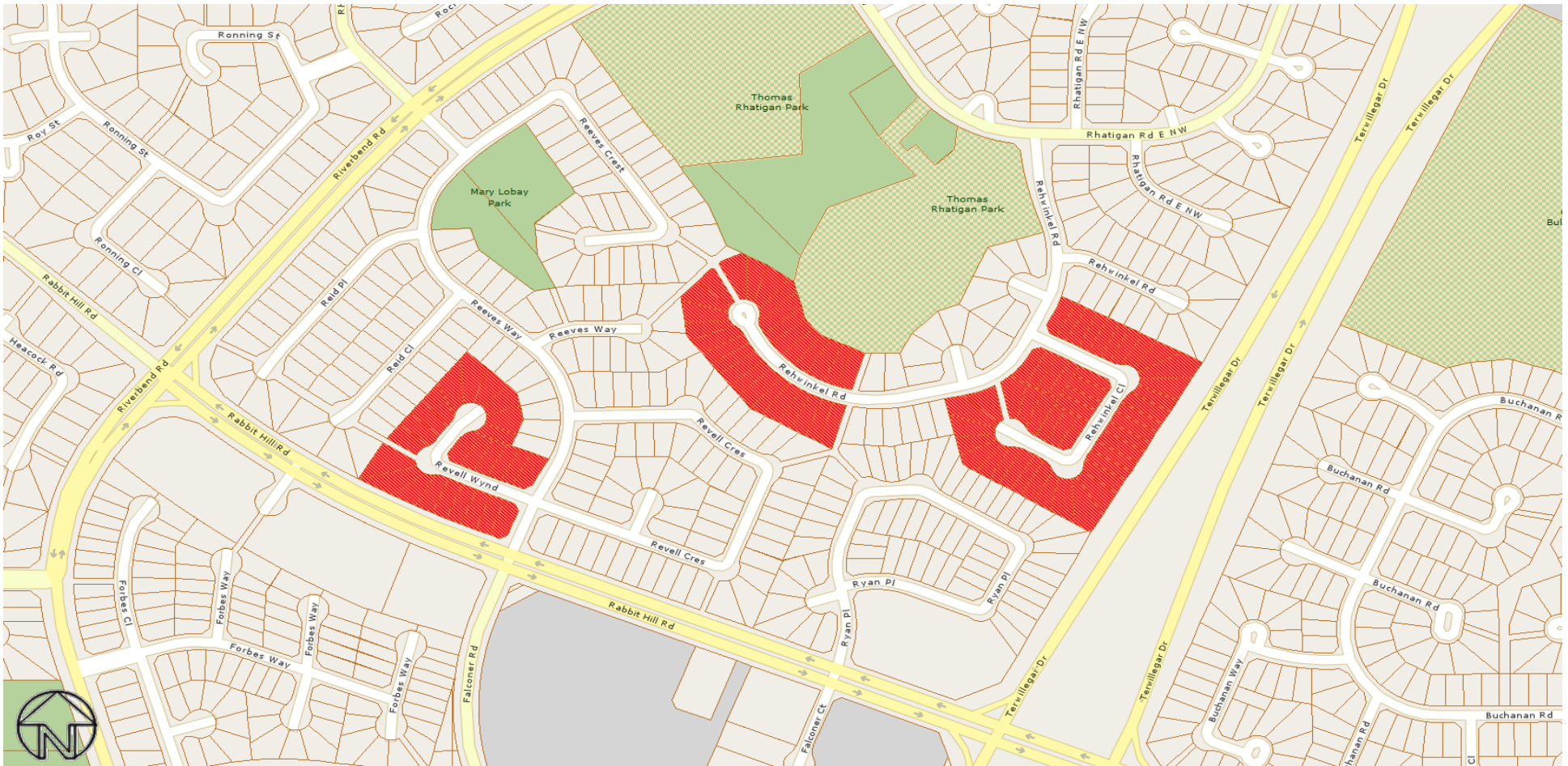


Neighbourhood Study Area - 3208 (Bellevue, Highlands and Beverly Heights)

All rights reserved.

The information provided by this map is for reference purpose only. The City of Edmonton disclaims any liability for the use of this map.

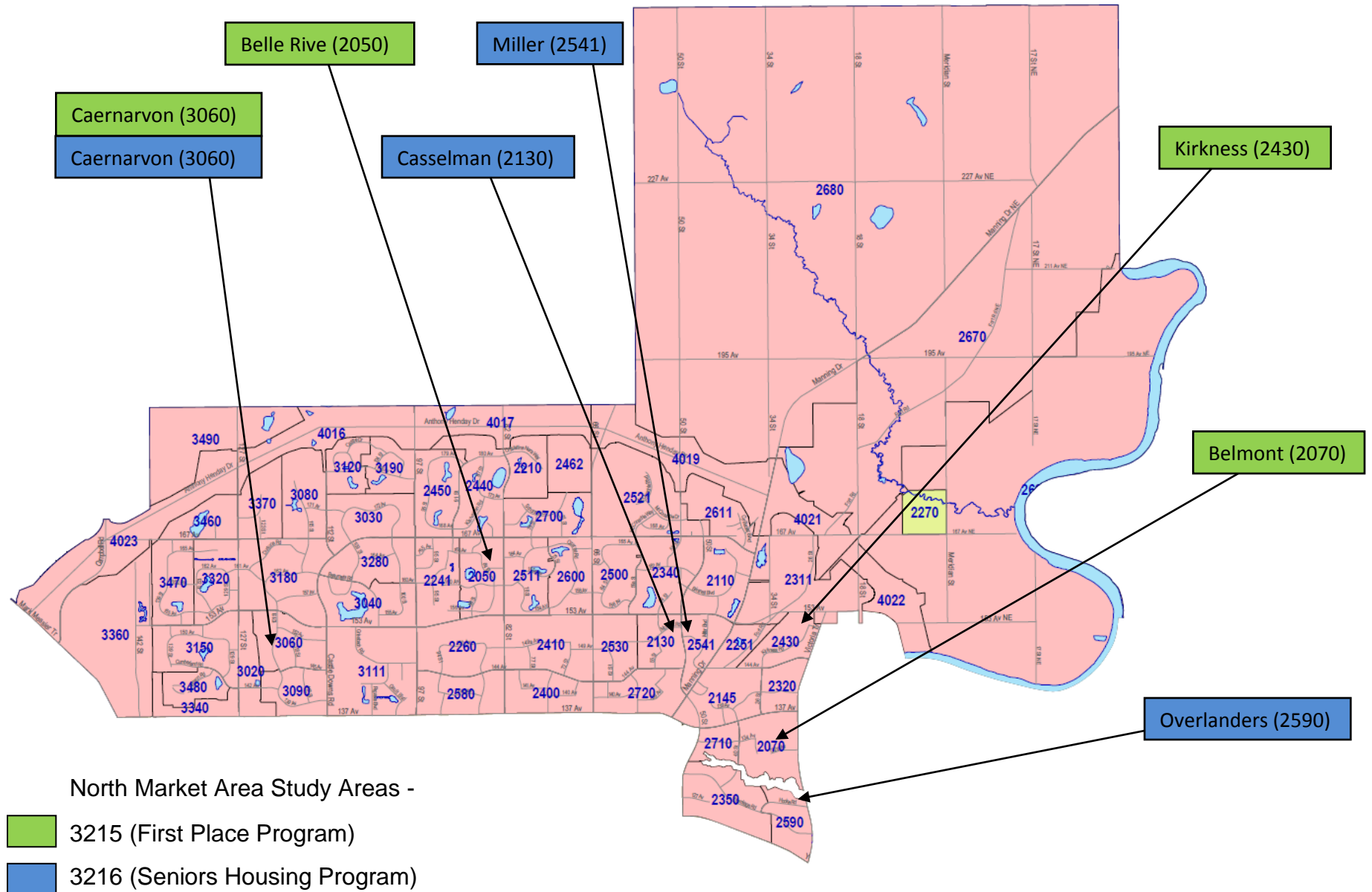
This map may not be published, broadcast, redrawn or redistributed in whole or in part without the express written permission of the City of Edmonton, Financial Services and Utilities Department.



Neighbourhood Study Area - 3212 (Rhatigan Ridge)

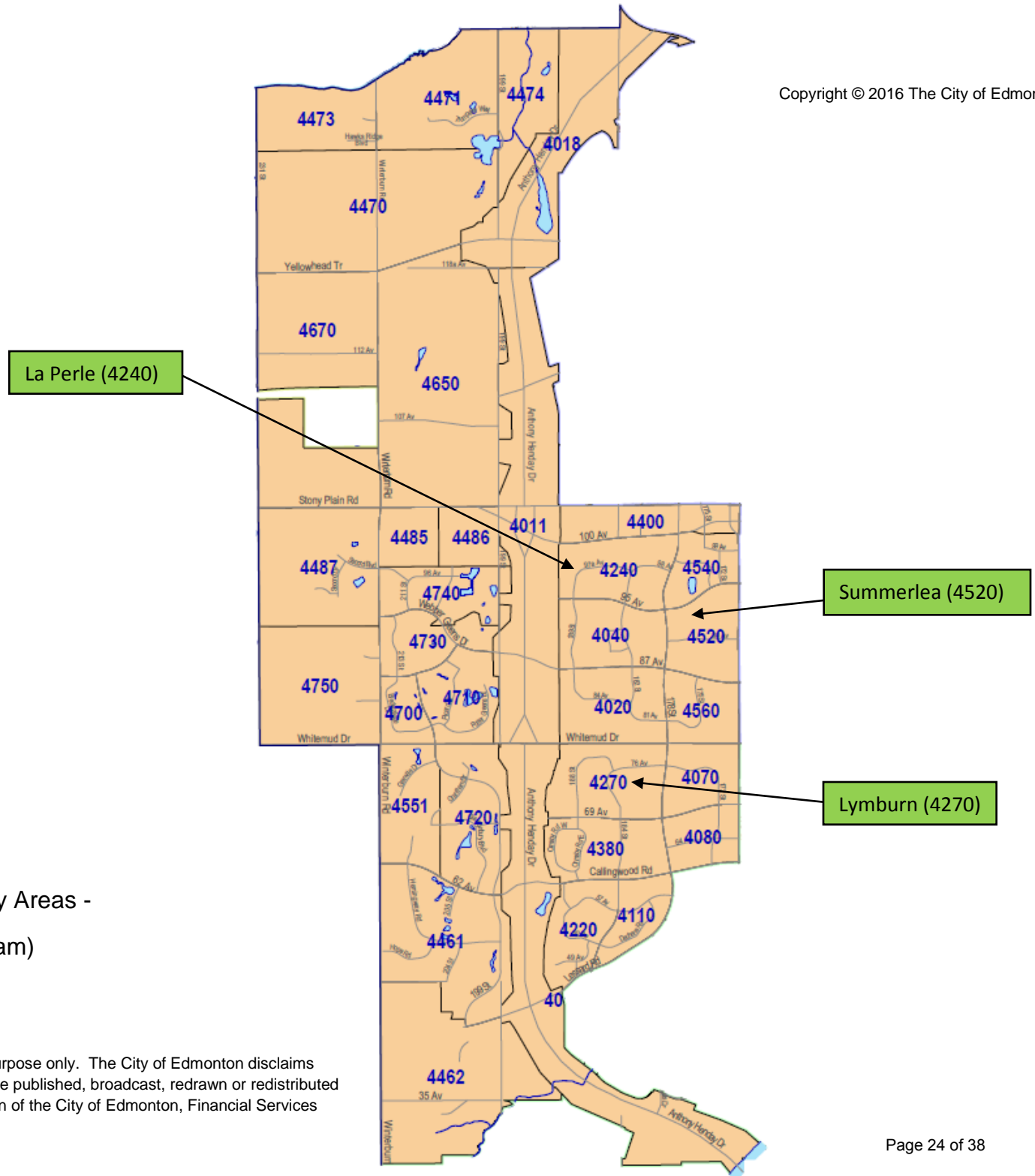
All rights reserved.

The information provided by this map is for reference purpose only. The City of Edmonton disclaims any liability for the use of this map. This map may not be published, broadcast, redrawn or redistributed in whole or in part without the express written permission of the City of Edmonton, Financial Services and Utilities Department.



All rights reserved.

The information provided by this map is for reference purpose only. The City of Edmonton disclaims any liability for the use of this map. This map may not be published, broadcast, redrawn or redistributed in whole or in part without the express written permission of the City of Edmonton, Financial Services and Utilities Department.

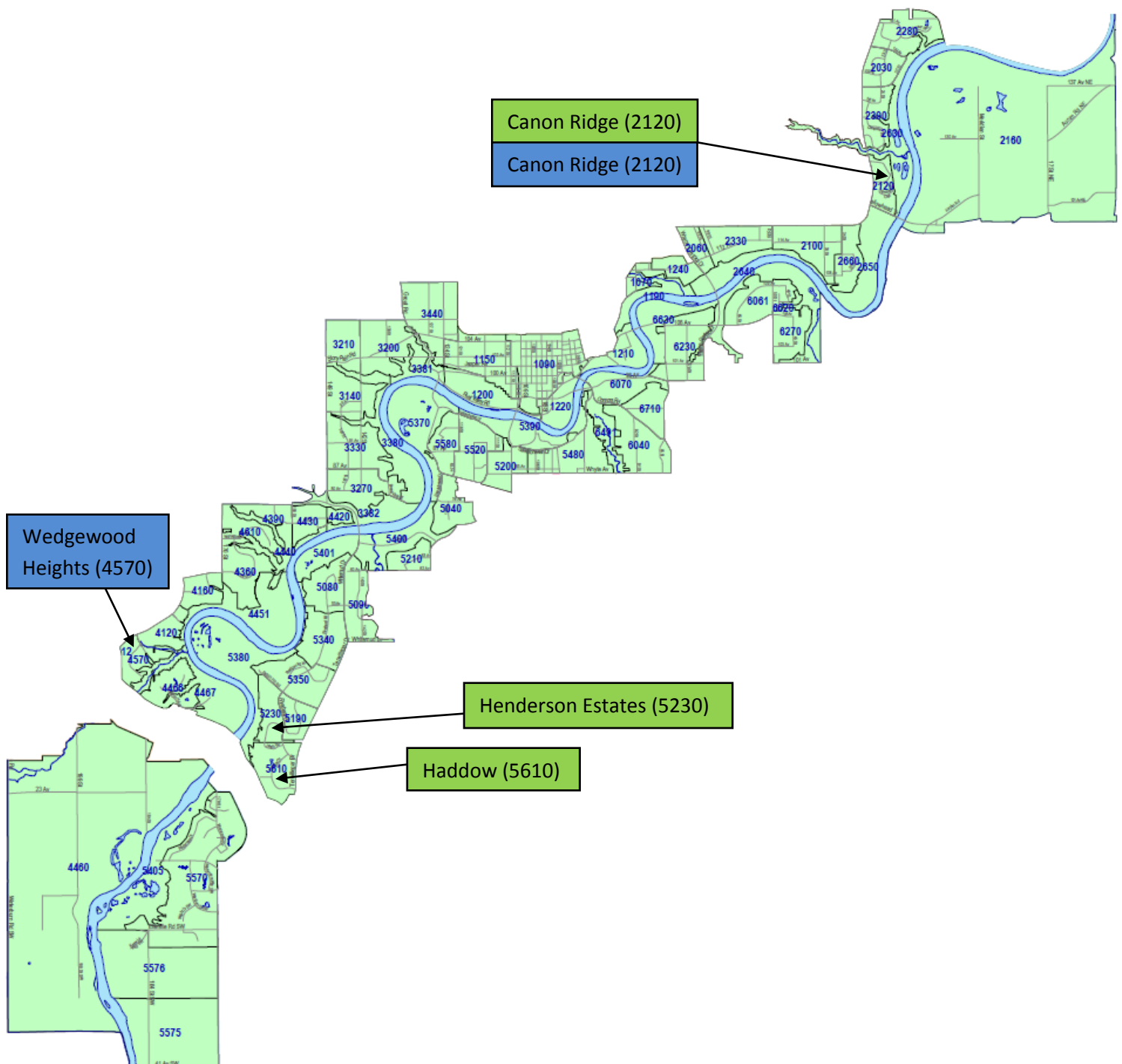


West Market Area Study Areas -

3215 (First Place Program)

All rights reserved.

The information provided by this map is for reference purpose only. The City of Edmonton disclaims any liability for the use of this map. This map may not be published, broadcast, redrawn or redistributed in whole or in part without the express written permission of the City of Edmonton, Financial Services and Utilities Department.

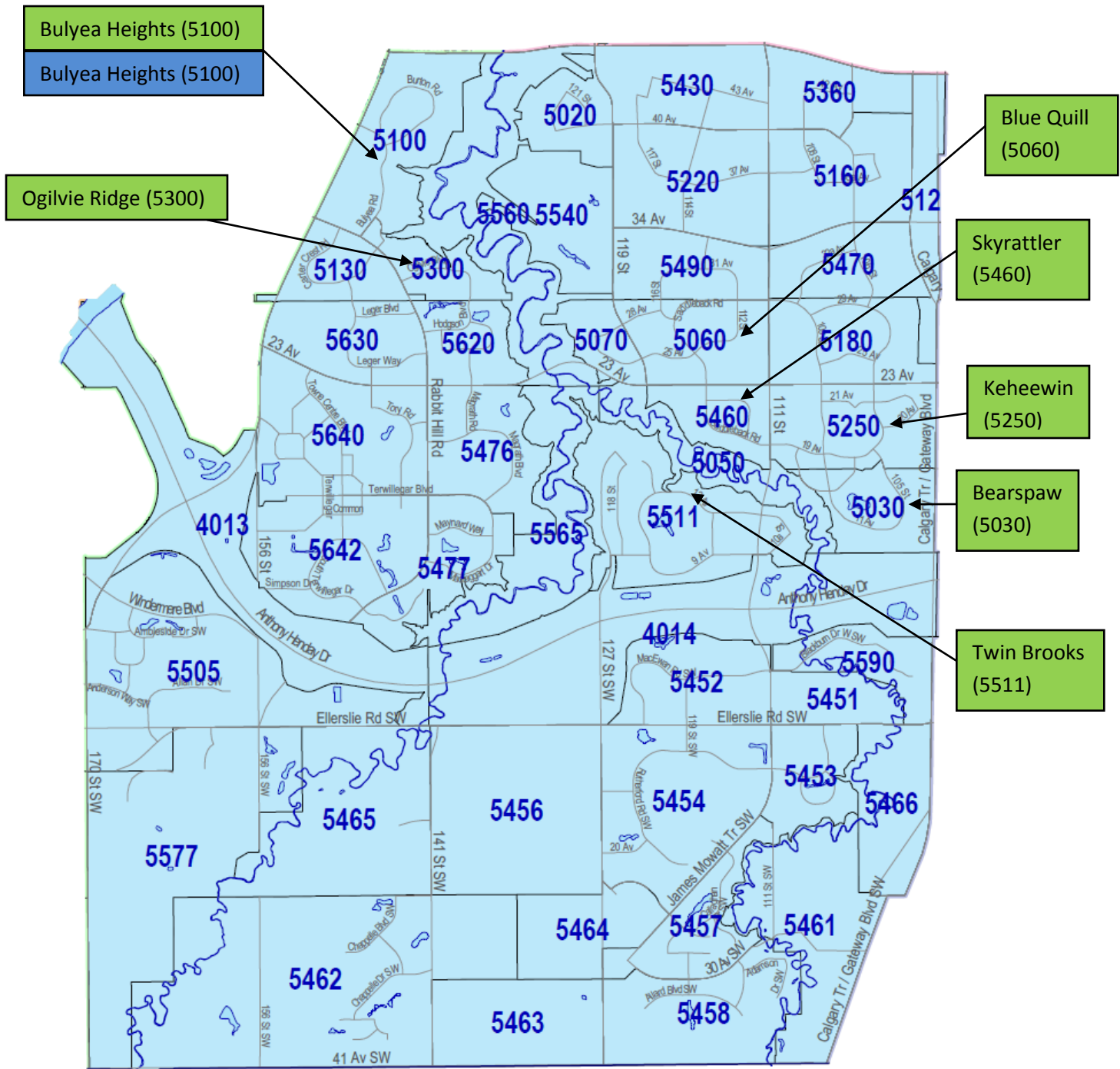


River Valley Market Area Study Areas -

- 3215 (First Place Program)
- 3216 (Seniors Housing Program)

All rights reserved.

The information provided by this map is for reference purpose only. The City of Edmonton disclaims any liability for the use of this map. This map may not be published, broadcast, redrawn or redistributed in whole or in part without the express written permission of the City of Edmonton, Financial Services and Utilities Department.



Southwest Market Area Study Areas -

- 3215 (First Place Program)
- 3216 (Seniors Housing Program)

All rights reserved.

The information provided by this map is for reference purpose only. The City of Edmonton disclaims any liability for the use of this map. This map may not be published, broadcast, redrawn or redistributed in whole or in part without the express written permission of the City of Edmonton, Financial Services and Utilities Department.

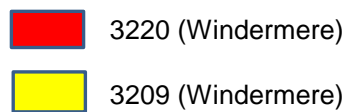


Neighbourhood Study Area - 3217 (Rio Terrace and Quesnell Heights)

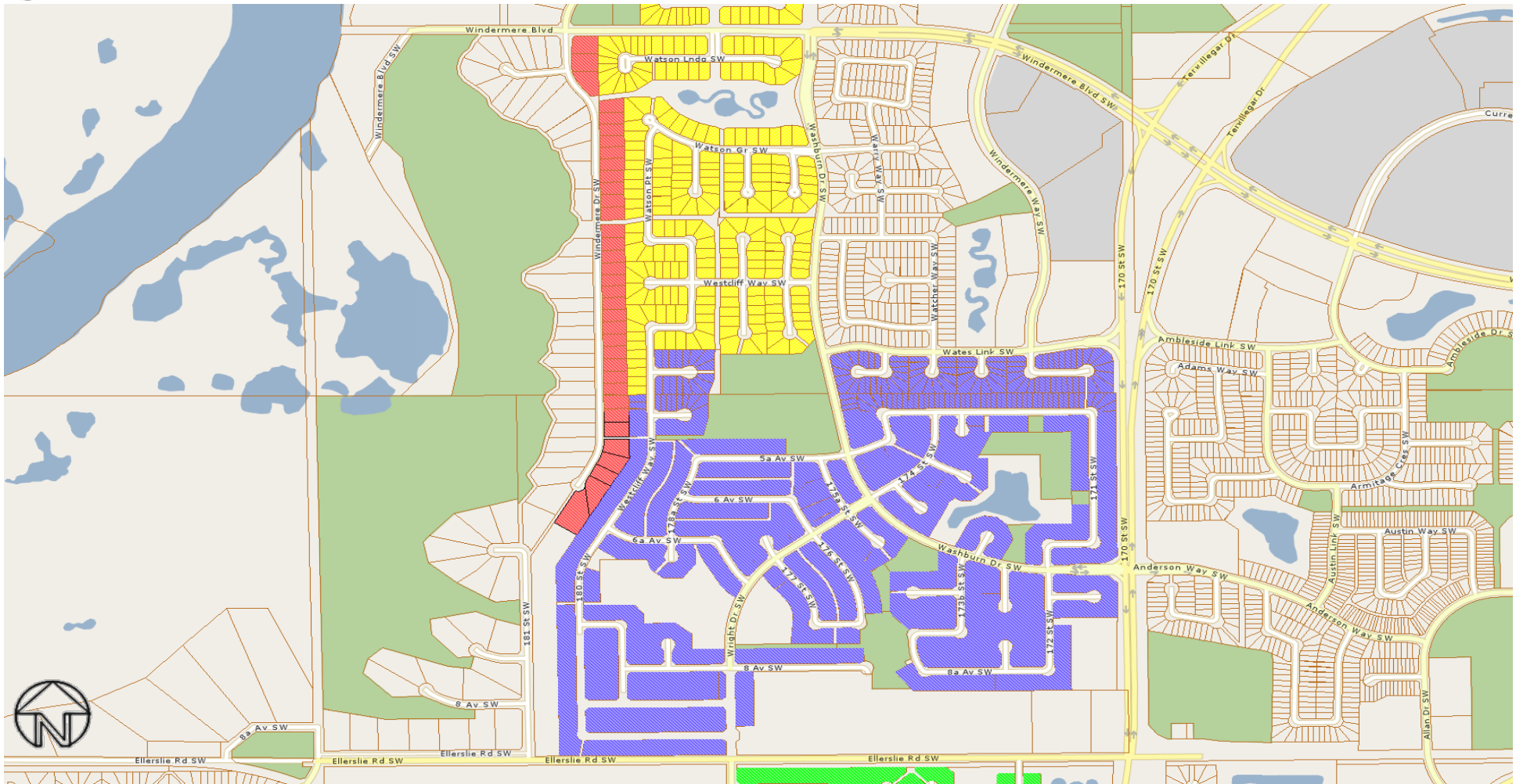
All rights reserved.

The information provided by this map is for reference purpose only. The City of Edmonton disclaims any liability for the use of this map.

This map may not be published, broadcast, redrawn or redistributed in whole or in part without the express written permission of the City of Edmonton, Financial Services and Utilities Department.

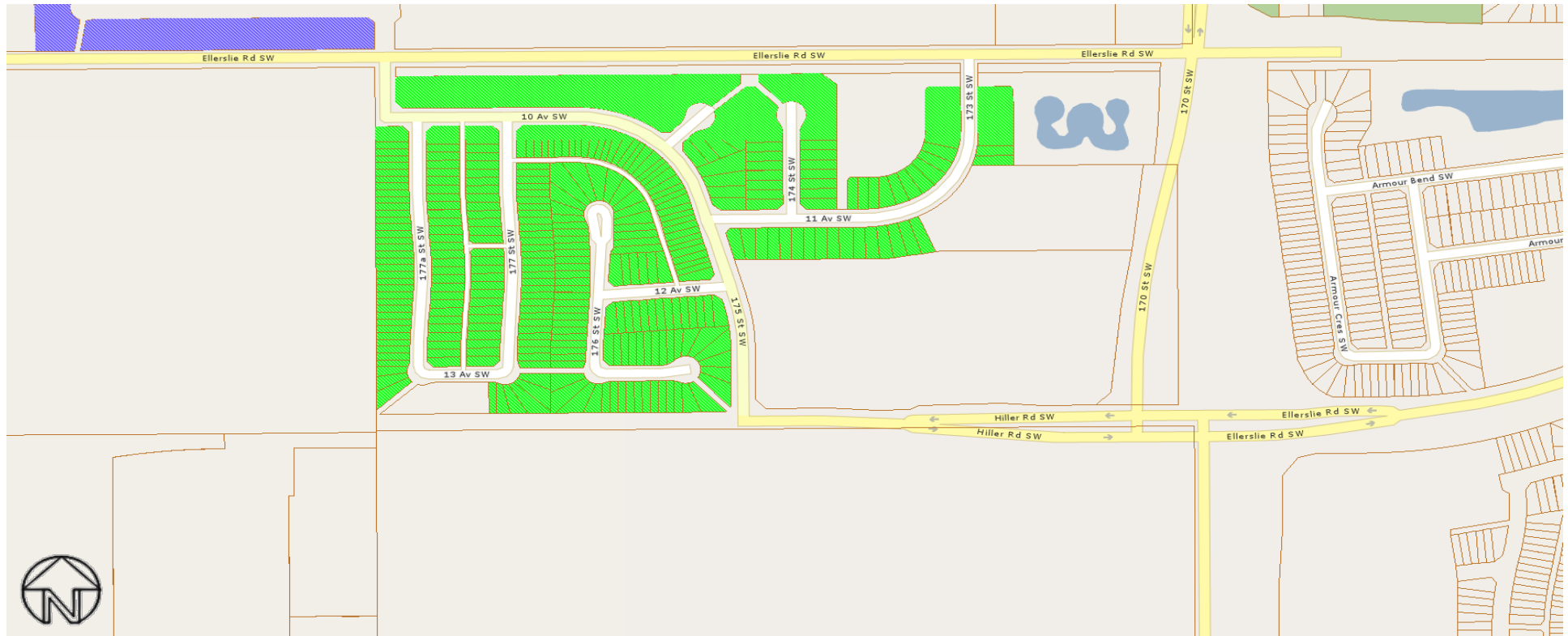



Page 29 of 38



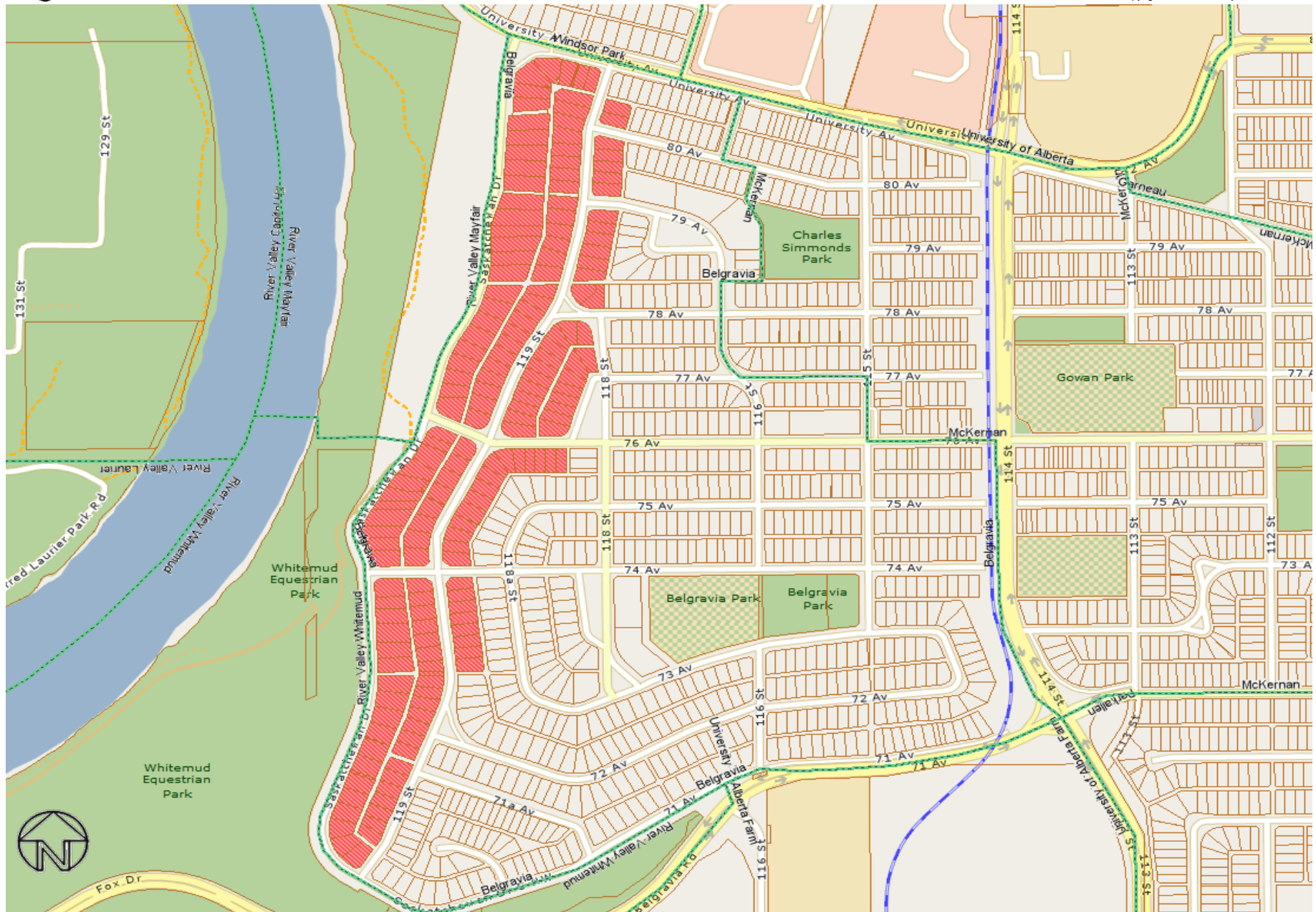
- 3220 (Windermere)
- 3209 (Windermere)
- 3221 (Windermere)

The information provided by this map is for reference purpose only. The City of Edmonton disclaims any liability for the use of this map. This map may not be published, broadcast, redrawn or redistributed in whole or in part without the express written permission of the City of Edmonton, Financial Services and Utilities Department.



 3222 (Windermere)

The information provided by this map is for reference purpose only. The City of Edmonton disclaims any liability for the use of this map. This map may not be published, broadcast, redrawn or redistributed in whole or in part without the express written permission of the City of Edmonton, Financial Services and Utilities Department.

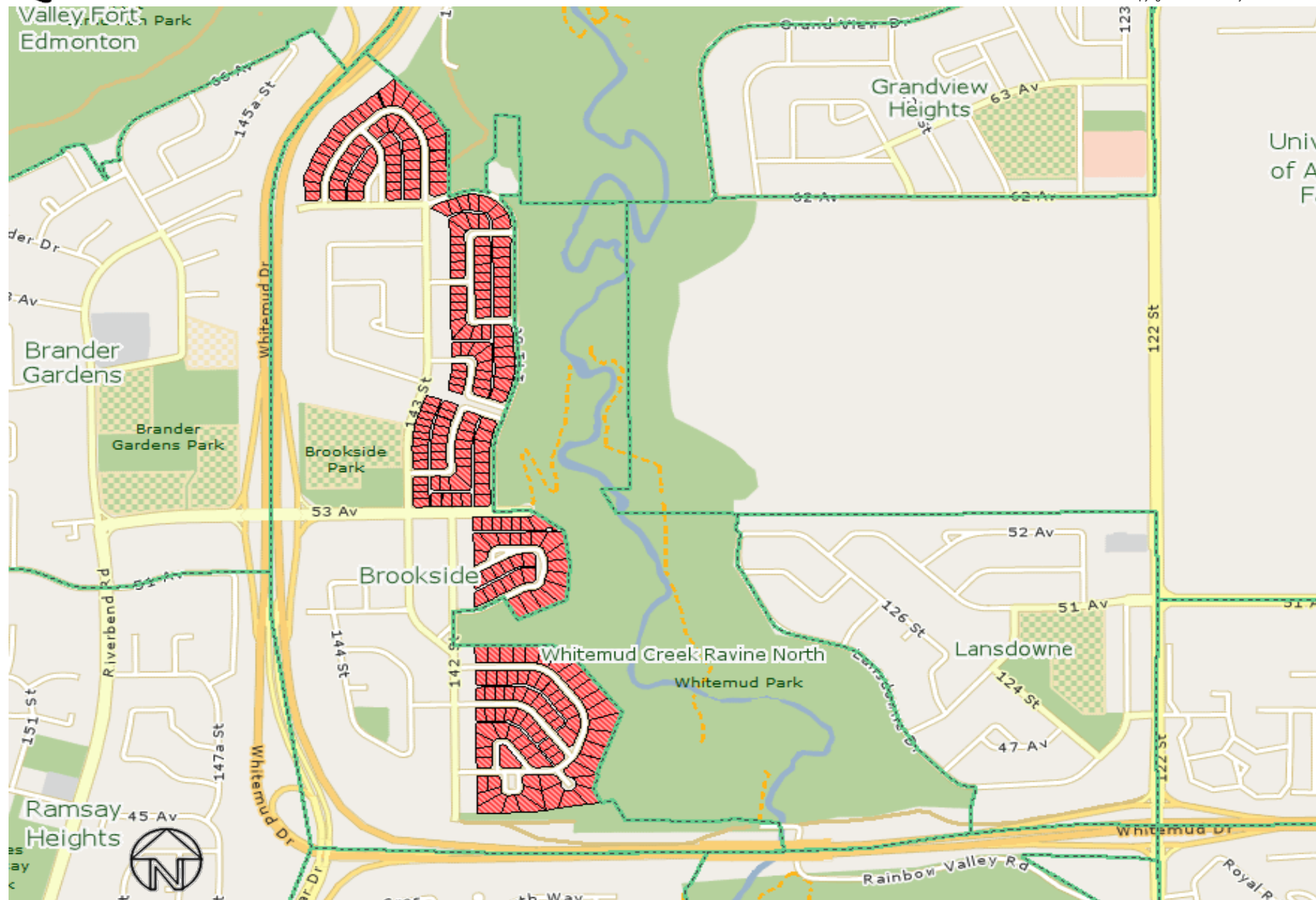


Neighbourhood Study Area - 3223 (Belgravia)

All rights reserved.

The information provided by this map is for reference purpose only. The City of Edmonton disclaims any liability for the use of this map.

This map may not be published, broadcast, redrawn or redistributed in whole or in part without the express written permission of the City of Edmonton, Financial Services and Utilities Department.



Neighbourhood Study Area - 3224 (Brookside)

All rights reserved.

The information provided by this map is for reference purpose only. The City of Edmonton disclaims any liability for the use of this map. This map may not be published, broadcast, redrawn or redistributed in whole or in part without the express written permission of the City of Edmonton, Financial Services and Utilities Department.

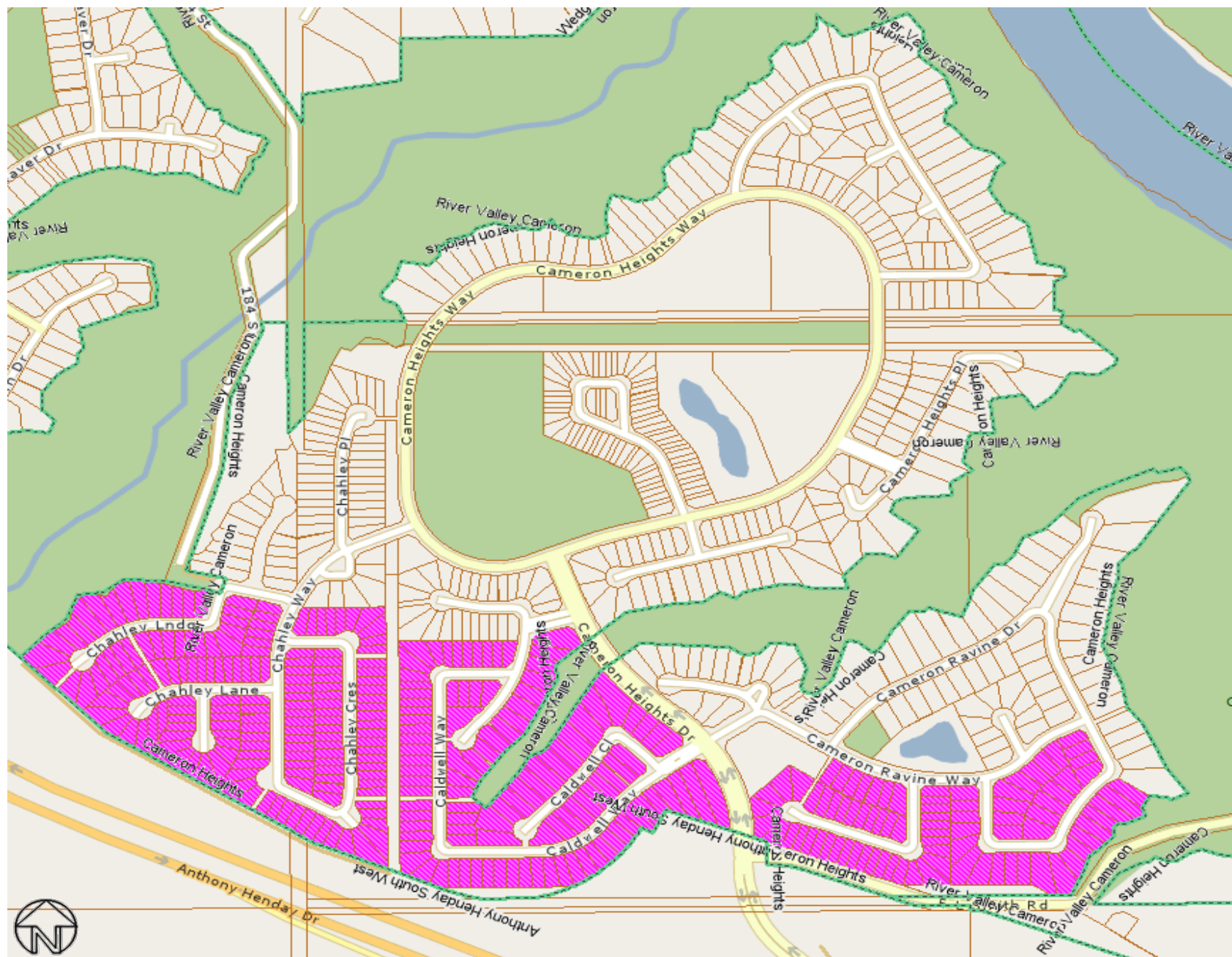


Neighbourhood Study Area - 3227 (Rio Terrace)

All rights reserved.

The information provided by this map is for reference purpose only. The City of Edmonton disclaims any liability for the use of this map.

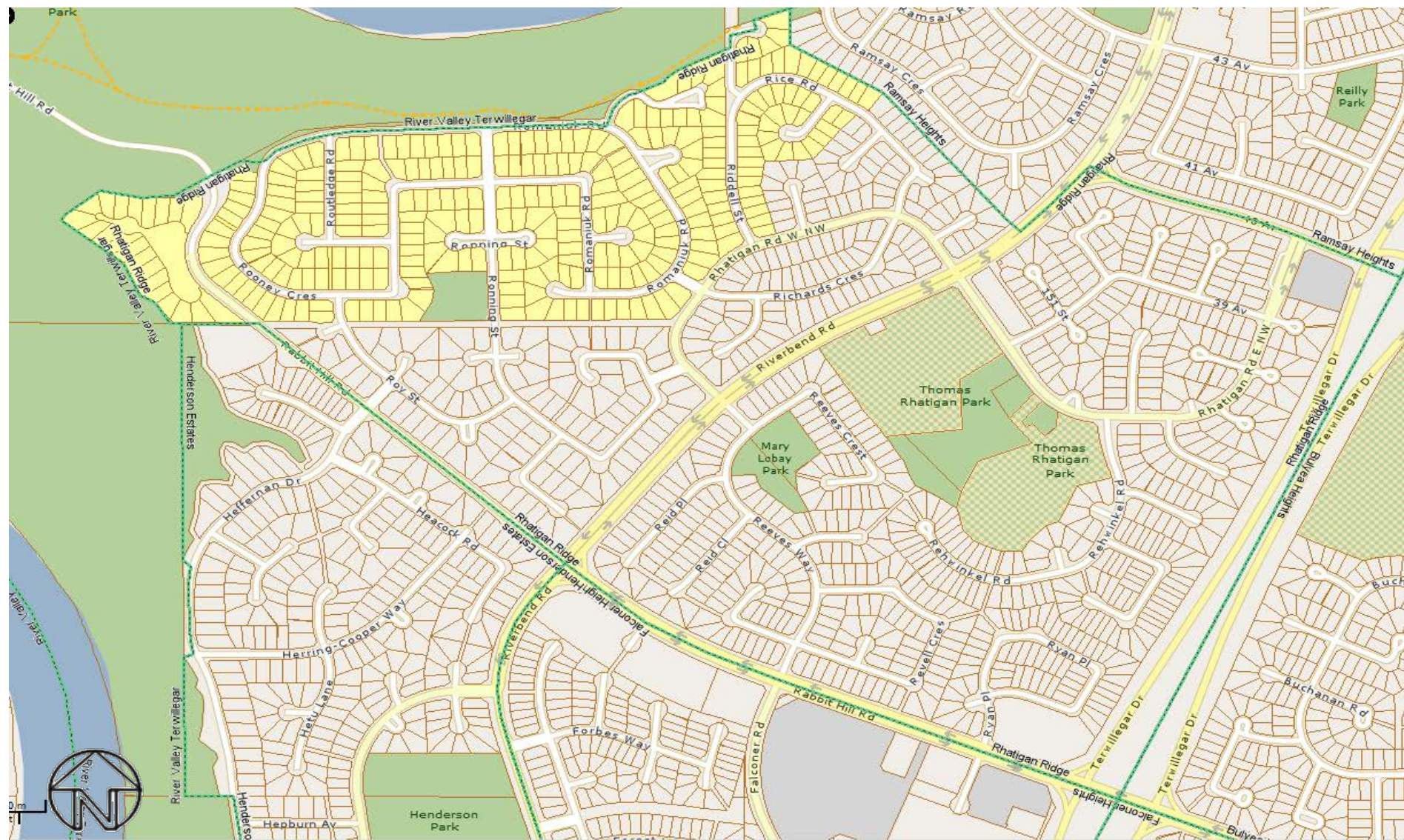
This map may not be published, broadcast, redrawn or redistributed in whole or in part without the express written permission of the City of Edmonton, Financial Services and Utilities Department.



Neighbourhood Study Area - 3230 (Cameron Heights)

All rights reserved.

The information provided by this map is for reference purpose only. The City of Edmonton disclaims any liability for the use of this map. This map may not be published, broadcast, redrawn or redistributed in whole or in part without the express written permission of the City of Edmonton, Financial Services and Utilities Department.



Neighbourhood Study Area - 3225 (Rhatigan Ridge)

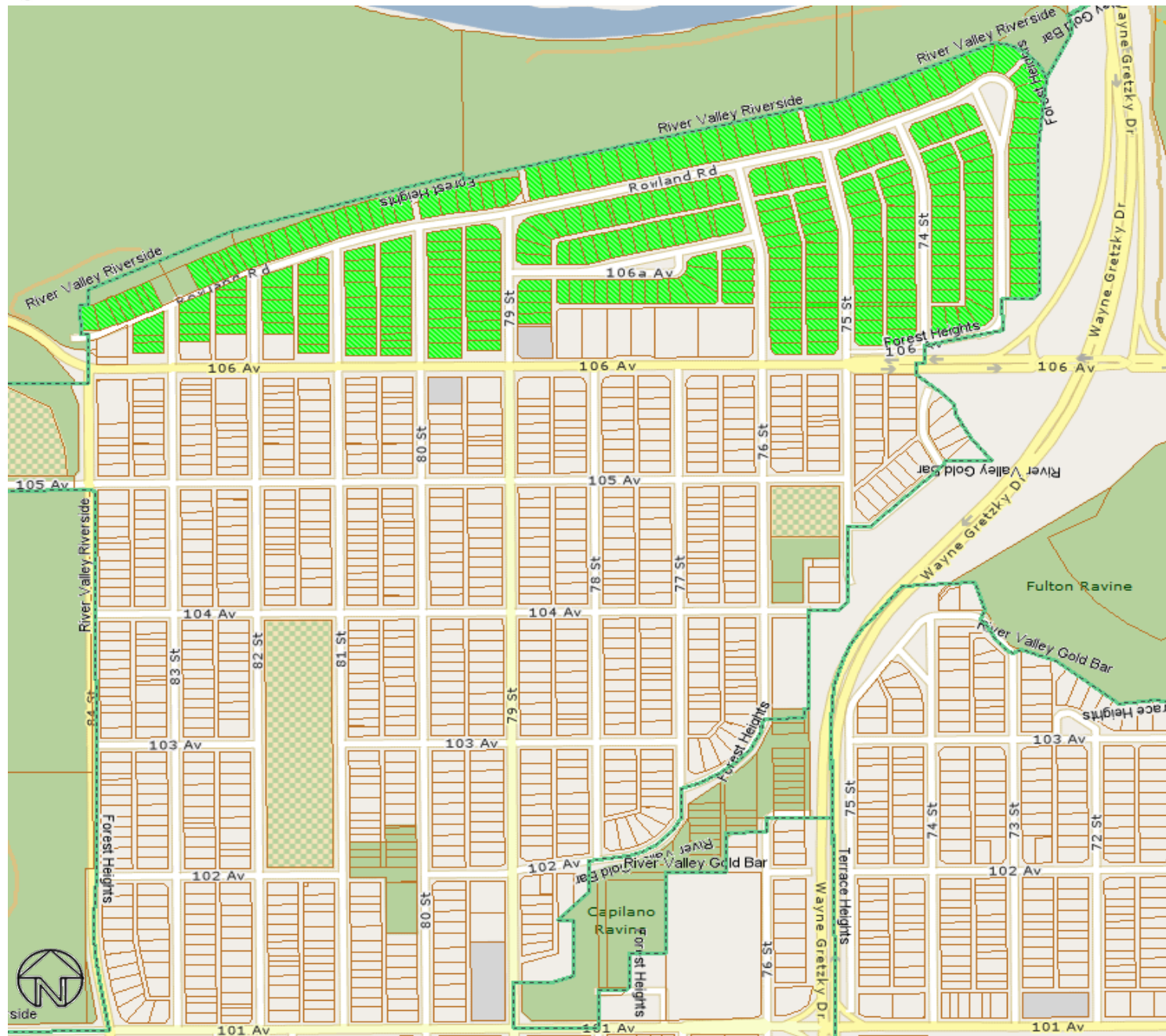
All rights reserved.

The information provided by this map is for reference purpose only. The City of Edmonton disclaims any liability for the use of this map.

This map may not be published, broadcast, redrawn or redistributed in whole or in part without the express written permission of the City of Edmonton, Financial Services and Utilities Department.



This map is for reference purposes only. The City of Edmonton disclaims any liability for the use of this map. This map may not be published, broadcast, redrawn or redistributed in whole or in part without the express written permission of the City of Edmonton, Financial Services and Utilities Department.



Neighbourhood Study Area - 3231 (Forest Heights)

All rights reserved.

The information provided by this map is for reference purpose only. The City of Edmonton disclaims any liability for the use of this map. This map may not be published, broadcast, redrawn or redistributed in whole or in part without the express written permission of the City of Edmonton, Financial Services and Utilities Department.