

Your Guide to Waste and Recycling



IF YOU LIVE
IN AN APARTMENT



Welcome to Edmonton. This guide will help you manage your waste correctly. Please follow the instructions inside.

- 1 Use a blue bin for recycling.
- 2 Recyclables may be loose or put in a blue bag.
- 3 Use a brown bin for garbage.



Waste Management Services

Recycle these items in your **blue bin**

No sorting required



Milk Cartons and Juice Boxes



Paper and Boxes



Glass Jars and Bottles



Metal Cans and Aluminum Trays



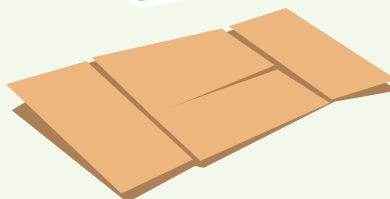
Cardboard Boxes



Plastic Containers and Bags



Put packaging
in garbage.



Remove caps
and lids.



Rinse all containers.
Leave labels on.



Flatten boxes.

Put these items in your garbage



Disposable Cups and Plates,
Shredded Paper and Tissue Paper



Food Waste



Plastic



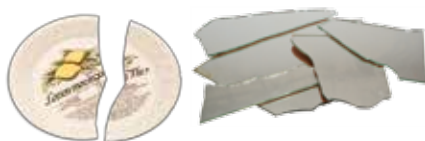
Old Shoes



Disposable Diapers



Styrofoam



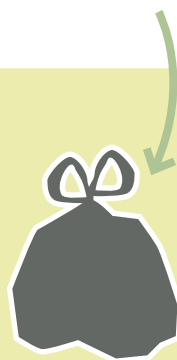
Broken Glass, Mirror and Plates



Dusty Items



Cooking Oil
and Grease



Bag dusty items.



Store used cooking oil in
a container under 4 litres.

Take these items to an **Eco Station**

FREE



Scrap Metal and Electronic Waste



Automotive



Paint



Batteries



Poisonous and Corrosive Materials



Needles and Syringes
Place in a puncture-proof container



Light Bulbs and Fluorescent Tubes



Small Items (\$8)



Large Items (\$12)



Loose or Mixed Waste



\$28



\$38



\$48



Do not pour chemicals into drains or sewers.



Do not mix. Mixing can cause dangerous chemical reactions.



Eco Stations do not accept hazardous waste from businesses.



LOCATIONS

Strathcona 5150 – 99 Street
Coronation 11440 – 143 Street
Ambleside 14710 Ellerslie Road
Kennedale 5355 – 127 Avenue

WINTER HOURS (November – March)

Tuesday – Saturday
9:00 am – 4:30 pm
Closed Sundays, Mondays and Holidays

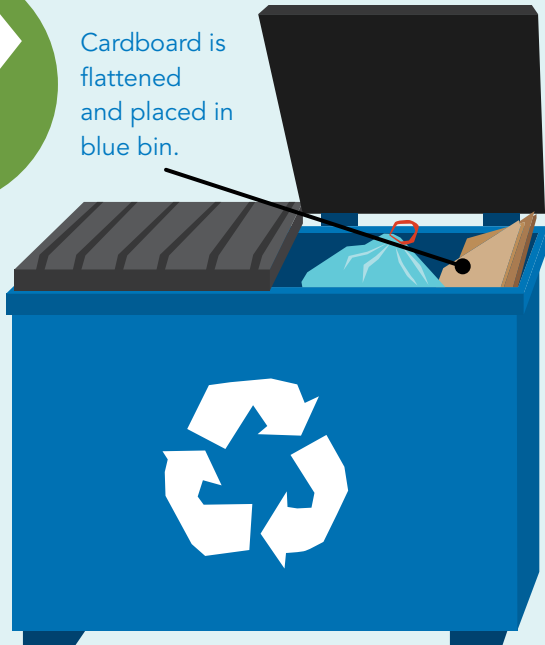
SUMMER HOURS (April – October)

Monday – Saturday
9:00 am – 6:30 pm
Closed Sundays and Holidays

How to set out your waste

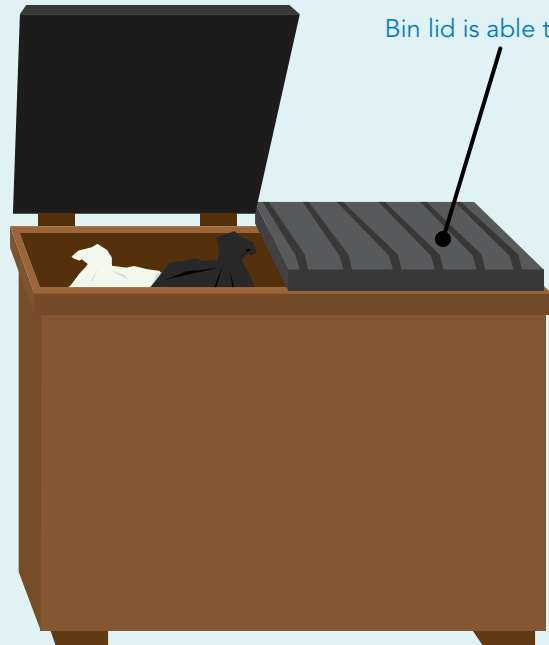


Cardboard is flattened and placed in blue bin.



BLUE BIN

Bin lid is able to close.



GARBAGE BIN

Area is tidy, clear and safe.

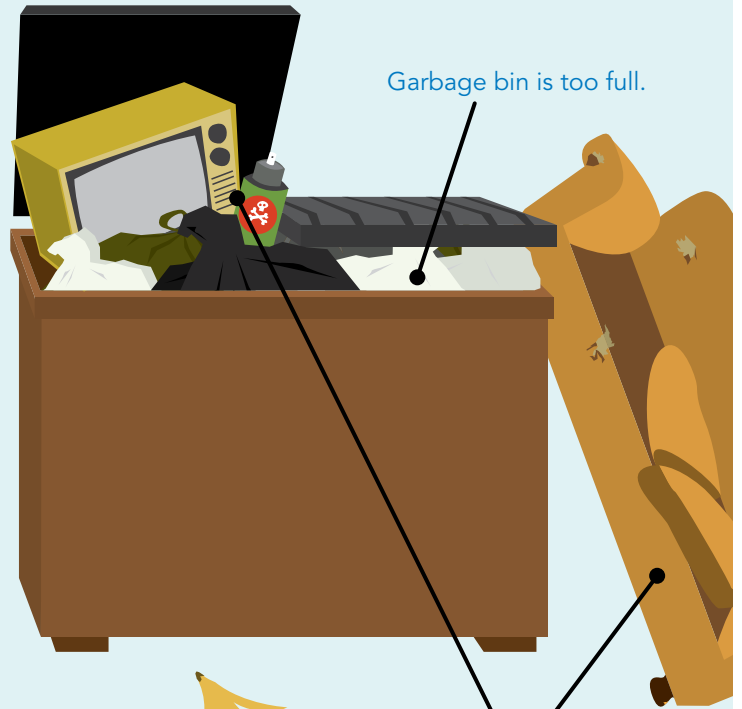


Garbage should go in the garbage bin.



Car is blocking bin for collectors.

Garbage bin is too full.



Poisonous items, electronics and large items should go to an Eco Station.

Garbage is littering collection site.



Discover these other services



Don't have a blue bin? VISIT A RECYCLING DEPOT!

For locations go to edmonton.ca/recyclingdepots or phone 311.

Depots are for recyclables only. It is illegal to leave garbage, electronics and large items at recycling depots.

SAVE MONEY AT THE REUSE CENTRE \$5 for all you need*



*For up to 50 kilograms.

Located at **6835 83 Street**. For more information, visit edmonton.ca/reusecentre



FREE disposal of couches, mattresses and more at Big Bin Events

Bring your big waste items to Big Bin Events. There are 12 events between spring and fall. For more information go to edmonton.ca/bigbinevents or phone 311.

Reuse Directory

Do you have items in good condition that you no longer need? Visit edmonton.ca/reusedirectory to find an organization in Edmonton that can use them.



Waste Management Services
For more information call 311
or visit edmonton.ca/waste.



100% Post-consumer waste