

# **City of Edmonton Graffiti Vandalism Audit (2019)**

**Prepared by: MGM Management  
February 6, 2020 – FINAL REPORT**



<i>Table of Contents</i>	
Acknowledgements	2
Executive Summary	3
Table ES-1 Summary	4
Figure ES1 - Locations & Tag Summary	4
Table ES-2 Change in Tags Observed 2019 vs. 2017	6
Table ES-3 Significant Changes in Graffiti Index by Neighbourhood	7
Introduction & Background	9
Audit Methodology	11
Results of the Edmonton Audit	12
Neighbourhood Graffiti Index & Rankings	13
Table 1 - Neighbourhood Graffiti Index Results 2019	13
Table 2 - Combined Neighbourhood Graffiti Index Results 2019	14
Table 3 - Significant Changes in Graffiti by Neighbourhood	14
Table 4 - Graffiti Occurrence by Neighbourhood Sampled	15
Target Properties & Categories	27
Location Intensity Rating (LIR)	32
Conclusions	34
APPENDIX A - Overview Audit Sample Locations	36
APPENDIX B - Graffiti Observation Locations	37
APPENDIX C – Sample Photographs - Edmonton Graffiti Vandalism	57

DRAFT

Figure 1 - Locations & Tag Count Summary	12
Figure 2 - Top 10 Taggers in 2019	23
Figure 3 - Six Most Active Neighbourhoods	24
Figure 4 - Sizes of Graffiti Observed in 2019	25
Figure 5 - Observed Graffiti is Not Artistic	27
Figure 6 - Graffiti Tags by Property Ownership	28
Table 1 - Neighbourhood Graffiti Index Results 2017	13
Table 2 - Combined Neighbourhood Graffiti Index Results 2017	14
Table 3 - Graffiti Occurrence by Neighbourhood Sampled	14
Table 4 - Comparison of Graffiti 2017 vs. 2016 Neighbourhoods	15
Table 5 - Prominent Taggers Observed	16
Table 6 - Neighbourhood Graffiti - Most Active Taggers – 2017	17
Table 7 - Graffiti Observed in 2017 is Mainly Small	24
Table 8 - Styles of Graffiti Vandalism Observed in 2017	26
Table 9 - Graffiti Categories	26
Table 10 - Graffiti Targets & Category Results	29

## Acknowledgements

### Capital City Clean Up, Community Standards and Neighbourhoods, Citizen Services

- Don Belanger, Program Manager,
- Tanya Laughren, Community Relations Advisor, Graffiti Project Manager,
- Jaswinder Sidhu; Javan McQuay, Jordana Hoblak, Municipal Enforcement Officers.

DRAFT

## Executive Summary

The City of Edmonton engaged MGM Management, a British Columbia consulting firm, to design and conduct a graffiti vandalism audit in selected neighbourhoods within the City. The first graffiti vandalism audit occurred in November of 2010, with repeat audits in October 2011, 2012, 2013, 2014 2015, 2016, 2017 and in 2019. This report presents the results for observations made in October 2019, during the ninth graffiti vandalism audit conducted in Edmonton.

Graffiti vandalism is a public nuisance offence that causes damage to public and private property. Graffiti is both a bylaw infraction and criminal act (mischief under the Criminal Code of Canada). During each of Edmonton's graffiti audits the consultant examined graffiti vandalism in the most active graffiti neighbourhoods documented in Edmonton. Edmonton has 375 designated neighbourhoods. It would be costly and time prohibitive to audit all neighbourhoods for graffiti, therefore a sample of neighbourhoods was used for audit purposes.

Graffiti auditing for 2019 was conducted in 20 Edmonton neighbourhoods. In this audit the City requested that 7 previously audited neighbourhoods be dropped, and new ones replace them. The neighbourhoods not sampled in 2019 were: Beacon Heights, Beverly Heights, Belvedere, Eastwood, Inglewood, Killarney, and Parkdale. The new neighbourhoods were Bonnie Doon, Calgary Trail North/South, Delton, King Edward Park, Kirkness, Spruce Avenue and Thorncliff. These neighbourhoods represent those with the highest incidents of graffiti complaints from citizens.

In each of the target neighbourhoods, a “hot spot sample area” and a “random sample area” were selected. Hot spot areas were those where significant reports of graffiti vandalism had been recorded in the City's data system. For each sample area, the consultant selected an area of 4 city blocks by 4 city blocks representing a size of approximately 20-25 hectares. For comparison, a “random” area, of the same approximate size as the “hot spot” was selected in each of the 20 neighbourhoods being audited. These “random areas” were selected from areas within the neighbourhood where historically there have been fewer reports of graffiti.

During the 2019 graffiti audit, the audit crew observed graffiti vandalism at 426 locations where graffiti vandalism was present, an increase of 5% over the number of locations observed in 2017. In 2017 there were 405 locations. The number of locations where graffiti was observed in 2019 increased by 17% compared to 2016 (365 locations) and by 31% compared to 2015 (322 locations). Data shows steady upward trend in the number of locations where graffiti is observed since 2015.

Correspondingly, in 2019 significantly more tags were observed than in 2017, 2016 or in 2015. In 2019 the audit documented 2,408 tags, compared to 1,947 in 2017; 1,575 tags in 2016 and 977 tags in 2015. This is a 24% increase over the previous audit in 2017, and 48% higher than in 2016. When compared to graffiti tag numbers in 2015 (977); the 2019 results (2,408) show 146% more tags than in 2015.



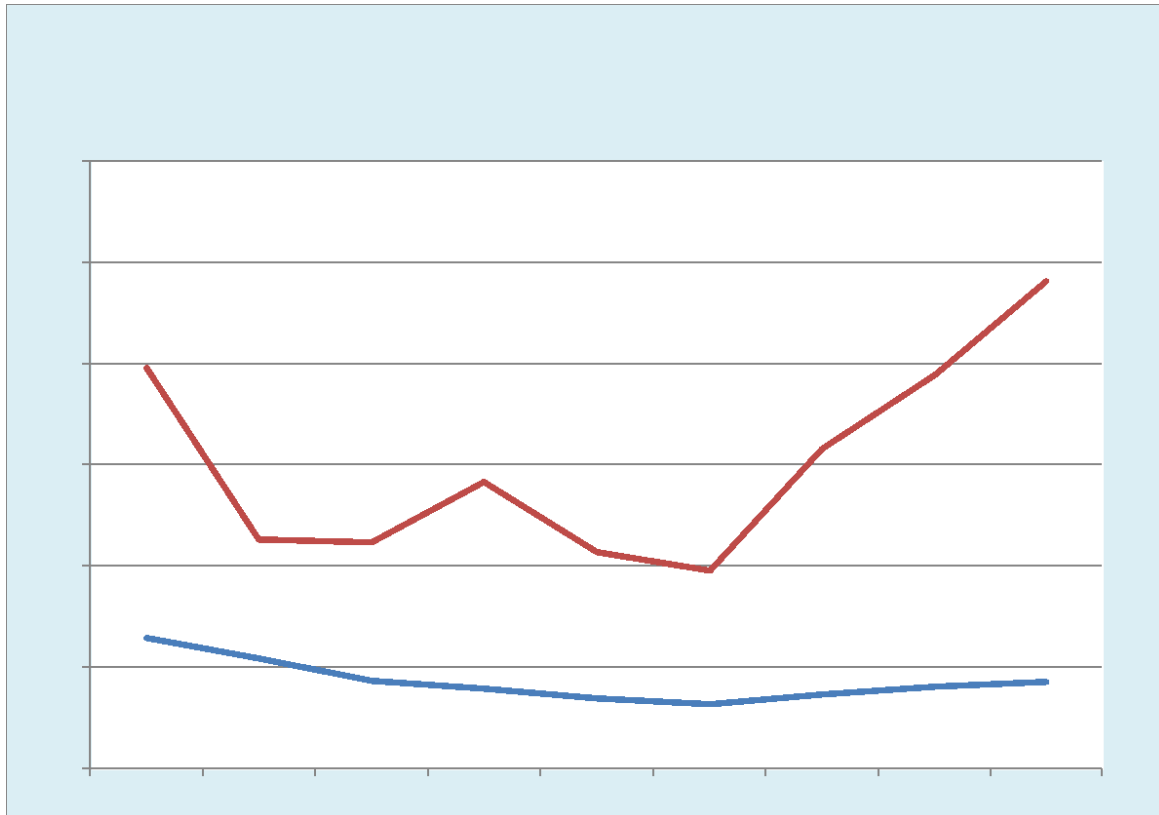
DRAFT

Table ES-1 Summary

	2019	2017	2016	2015	2014	2013	2012	2011	2010
<b>Locations</b>									
Total Locations where graffiti observed 2019	426	405	365	322	352	395	438	543	646
Change from 2017	5.2%								
Change from 2016	16.7%								
Change from 2015	32.3%								
Change from 2014	21.0%								
Change from 2013	7.8%								
Change from 2012	-2.7%								
Change from 2011	-21.5%								
Change from 2010	-34.1%								
<b>Graffiti Tags</b>									
Total Locations where graffiti observed	2,408	1,947	1,575	977	1,071	1,413	1,116	1,133	1,978
Change from 2017	23.7%								
Change from 2016	23.6%								
Change from 2015	146.5%								
Change from 2014	124.8%								
Change from 2013	70.4%								
Change from 2012	115.8%								
Change from 2011	112.5%								
Change from 2010	21.7%								

Whereas the trend from 2013 to 2015 was a decrease in observed graffiti tags in the sample areas, that trend has reversed since 2016.

Figure ES1 - Locations &amp; Tag Summary



DRAFT

Whereas the majority of previously audited neighbourhoods exhibited increases in the number of tags observed, there were neighbourhoods where fewer tags were recorded. These were: Garneau (-46%); Boyle (-28%), CPR/ Strathcona Junction (-11%) and Queen Alexandra (-10%).

Offsetting these decreases in tags there were significant increases in the number of tags observed compared to 2017 observations in eight neighbourhoods. Table ES-2 describes these changes. Increases in the number of tags observed ranged from 133% in Westmount; 117% in Strathcona; 100% in Oliver; and a 50% increase in Queen Mary Park the neighbourhood.

Table ES-2 on the next page details these observations.

DRAFT

Table ES-2 Change in Tags Observed 2019 vs. 2017

Audited	Tags 2019 vs. 2017	Locations	2019 vs. 2017 Change %	% of Total 2019 Tags		# of Tags 2019	# of Tags 2017	Tags Up/Down from 2017
	NA = Not Applicable	Yellow = New Neighbourhood						
1	Alberta Ave	10	15%	1.3%		31	27	4
	Beacon Heights	Not Audited	NA		Not Audited	Not Audited	6	
	Belvedere	Not Audited	NA		Not Audited	Not Audited	24	
	Beverly Heights	Not Audited	NA		Not Audited	Not Audited	6	
2	Bonnie Doons	15	NA	1.5%	New for 2019	37		NA
3	Boyle Street	25	-28%	3.2%		78	109	-31
4	Calgary Trail North/South	10	NA	0.8%	New for 2019	20		NA
5	Central McDougall	15	41%	2.4%		65	46	19
6	CPR West / Stathcona Junction	10	-11%	5.7%		137	154	-17
7	Delton	5	NA	0.3%	New for 2019	7		NA
8	Downtown	80	24%	19.8%		476	383	93
	Eastwood	Not Audited	NA		Not Audited	Not Audited	46	
9	Garneau	29	-46%	4.2%		102	190	-88
	Inglewood	Not Audited	NA		Not Audited	Not Audited	15	
10	King Edward Park	22	NA	4.4%	New for 2019	107		NA
11	Kirkness	2	NA	0.1%	New for 2019	3		NA
	Killarney	Not Audited	NA		Not Audited	Not Audited	27	
12	McCauley	37	46%	8.6%		207	142	65
13	Oliver	22	100%	3.7%		90	45	45
	Parkdale	Not Audited	NA		Not Audited	Not Audited	5	
14	Queen Alexandra	44	-10%	12.0%		290	322	-32
15	Queen Mary Park	19	50%	1.5%		36	24	12
16	Ritchie	17	2%	4.7%		113	111	2
17	Spruce Avenue	9	NA	0.6%	New for 2019	14		
18	Strathcona	29	117%	21.7%		522	241	281
19	Thorncliff	7	NA	0.7%	New for 2019	17		
20	Westmount	16	133%	2.3%		56	24	32
		423		100%		2,408	1,947	

During this audit approximately 1,000 photographs were taken recording the graffiti observed. A comprehensive database was created to archive and analyze the data collected. Paper records, electronic data records and digital photographic records were archived to preserve the data gathered.

The audit methodology used by the City of Edmonton, as developed with the consultant, provides a repeatable and unbiased way of auditing neighbourhoods for graffiti vandalism. The neighbourhoods examined in this audit can be examined in the future to determine whether the amount of graffiti vandalism is increasing or decreasing.

For the 2019 graffiti vandalism audit the consultant calculated a Location Intensity Rating (LIR) to examine the amount and intensity of graffiti at each of the 426 locations. For comparison purposes these intensities (LIR) of graffiti are plotted on neighbourhood maps in Appendix B showing graffiti locations and LIRs for 2019.

Consistent with observing a significant increase in graffiti tags in 2019 compared to the previous, the graffiti index also was observed to increase in 2019.

Several neighbourhoods exhibited significant increases or decreases in graffiti activity as indicated by comparing the graffiti indexes of 2017 to the current audit. Strathcona is particularly noteworthy, as this neighbourhood has historically been one of the most tagged areas audited. In 2019 the combined index for the Strathcona neighbourhood rose by 117% indicating significantly more tagging activity compared to 2017. Although Westmount exhibited a greater change in graffiti index (133% increase in its index), it was on a relatively smaller number of tags observed.

**Table ES-3 Significant Changes in Graffiti Index by Neighbourhood**

	Index Increase		Index Decrease
<b>Increased Activity</b>		<b>Decreased Activity</b>	
Westmount	133%	Boyle Street	-28%
Strathcona	117%	Garneau	-46%
Oliver	100%	CPR West/Strathcona Junction	-11%
Queen Mary Park	50%	Queen Alexandra	-10%
McCauley	46%		
Central McDougall	41%		
Downtown	24%		

During the 2019 field work, auditors were accompanied by a City of Edmonton Municipal Enforcement Officer, from the Complaints and Investigations Section of the Community Standards and Neighbourhoods Branch. The identification of taggers has been enhanced by having City staff participating in the audit, due to their skills in reading tagger names.

The number of identified (readable) tags observed in 2019 was 1,521 compared to 1,442 in 2017. The number of unidentifiable tags has also increased from 25% in 2017 to 37% in 2019. This change may be due to unfamiliar tags being encountered and with City staff performing graffiti tag reading duties less often than in previous audit years.

Most graffiti tags are small covering less than 0.185 sq. m (2sq.ft.). In the 2019 audit the number of small tags increased from 1,597 in 2017 to 1,892 in 2019. The proportion of small tags remained similar with other audits at 79% of total tags in 2019 compared to 82% in 2017.

The graffiti observed in 2019 was recorded as predominantly “marker / plain” graffiti at 95.9 %; (96.7% in 2017, and 94.3% in 2016). This is graffiti that is textual or stylized in nature and is not artistic in its attempted design.

The consultant notes that the proportion of total graffiti on City assets (signs, ETS, park furniture etc.) has risen slightly from 9% in 2017 to 11% in 2019. Most of the tags on City property are on garbage and recycling bins in alleys and laneways, representing 56% of City tags.

DRAFT

Commercial waste bins, parking lot barricades, signs and posts continue to be common targets for taggers. Retail property such as stores, and service providers are often targets for graffiti. Private residential and multi-family residential properties are also targets of graffiti vandals, especially on fences and garages in back alleys and laneways. A continuing observation is that murals, throughout the City, were not generally defaced by graffiti tags. This reinforces previous observations that in general graffiti vandals tend to avoid tagging murals.

DRAFT

## Introduction & Background

Graffiti vandalism is a property crime that places a financial burden on public and private property owners. Graffiti vandalism defaces property, resulting in significant cleanup and prevention efforts and remediation costs in a large municipality like Edmonton.

The City of Edmonton's Capital City Clean Up (CCCU) program operates an active Graffiti Management Program (GMP). The Capital City Clean Up program provides support to property owners in understanding graffiti vandalism, removing graffiti, and engages the community in sharing the responsibility for graffiti vandalism prevention and removal.

Due to increased public concern and awareness, Community Standards Bylaw 14600, section 9, was amended effective April 1, 2008, requiring owners to remove graffiti vandalism from their properties upon notification. Community Standards bylaw enforcement allows for the issuing of a \$250 ticket in the event of non-compliance. The City can also cause a forced cleaning to be implemented under the Municipal Government Act, with municipal assets conducting the cleanup. These costs are transferred back to the property owner by adding the cost to the tax roll for the specific property.

In 2008, to increase enforcement and removal, CCCU proactively created an inventory of graffiti vandalism in the City. In this inventory, it was not possible to collect detailed information on the graffiti vandalism at each location. The inventory served as a starting point for graffiti enforcement commencing in the spring of 2009. Subsequently, a second inventory was completed by City of Edmonton graffiti removal staff from November 1, 2009 to April 1, 2010.

Since 2008, information regarding graffiti has been gathered by the City through complaints and documentation from bylaw officers. This information has been entered into the City's "POSSE" data management system for investigation and follow-up. Staff determined that some graffiti data was inaccurate or incomplete causing difficulties in follow-up activities for bylaw officers to conduct enforcement. Data entered into the City's "POSSE" data management system formed the basis of designing the first graffiti audit in 2010, and was used, as the source of data, in choosing which neighbourhoods would be sampled in graffiti vandalism audits. Information assembled on taggers and locations of graffiti is shared with the Edmonton Police Service to assist police in their investigations and to improve the success of charges laid for graffiti offences.

In October 2010, the City and MGM Management developed and implemented a method for auditing graffiti vandalism in selected neighbourhoods in Edmonton. Using these audit techniques, the City can compare the occurrence of graffiti offences in given neighbourhoods and has used this tool to compare graffiti vandalism intensity from one year to the next.

City bylaw enforcement staff have issued clean up notices to property owners based on the information gathered from the Graffiti Vandalism Audits taking place from 2010 to 2016. This process has proven to be effective in identifying and reducing graffiti occurrences in Edmonton.

DRAFT

In mid-October 2019, the City conducted its ninth Graffiti Vandalism Audit. Twenty neighbourhoods were audited, seven of the original neighbourhoods were substituted with new neighbourhoods requested by City staff in 2019. The neighbourhoods not sampled in 2019 were: Beacon Heights, Beverly Heights, Belvedere, Eastwood, Inglewood, Killarney, and Parkdale. The new neighbourhoods were: Bonnie Doon, Calgary Trail North/ South, Delton, King Edward Park, Kirkness, Spruce Avenue and Thorncliff.

By conducting graffiti audits Edmonton has developed a method for evaluating the occurrence and intensity of graffiti vandalism in selected neighbourhoods. The results provide unbiased information about the street names (tagger names) of graffiti vandals while examining the types and size of graffiti vandalism and target properties where graffiti is placed.

This report describes how the 2019 graffiti audit was conducted and provides results based upon field observations.

The debate on graffiti street art versus graffiti vandalism has long been a contentious issue for Edmontonian's. The City of Edmonton is committed to promoting safer, cleaner communities by reducing and preventing graffiti vandalism, while at the same time recognizing the artistic and cultural value street art can add when done tastefully, and with owner permission so that it does not contravene the Community Standards bylaw.

A blue oval graphic containing the word "DRAFT" in white, tilted at an angle. A thin blue line extends from the right side of the oval across the top of the page.

DRAFT

## **Audit Methodology**

City of Edmonton staff in cooperation with MGM Management, a B.C. based environmental consulting firm, designed a method for auditing graffiti vandalism. The baseline audit was carried out in early November 2010. Subsequently repeat graffiti vandalism audits were done in October 2011, 2012, 2013, 2014, 2015, 2016, 2017 and 2019 to determine changes in graffiti behaviour as compared to the baseline work.

Full details of the Audit Methodology and other Supporting Documents are available on-line at:

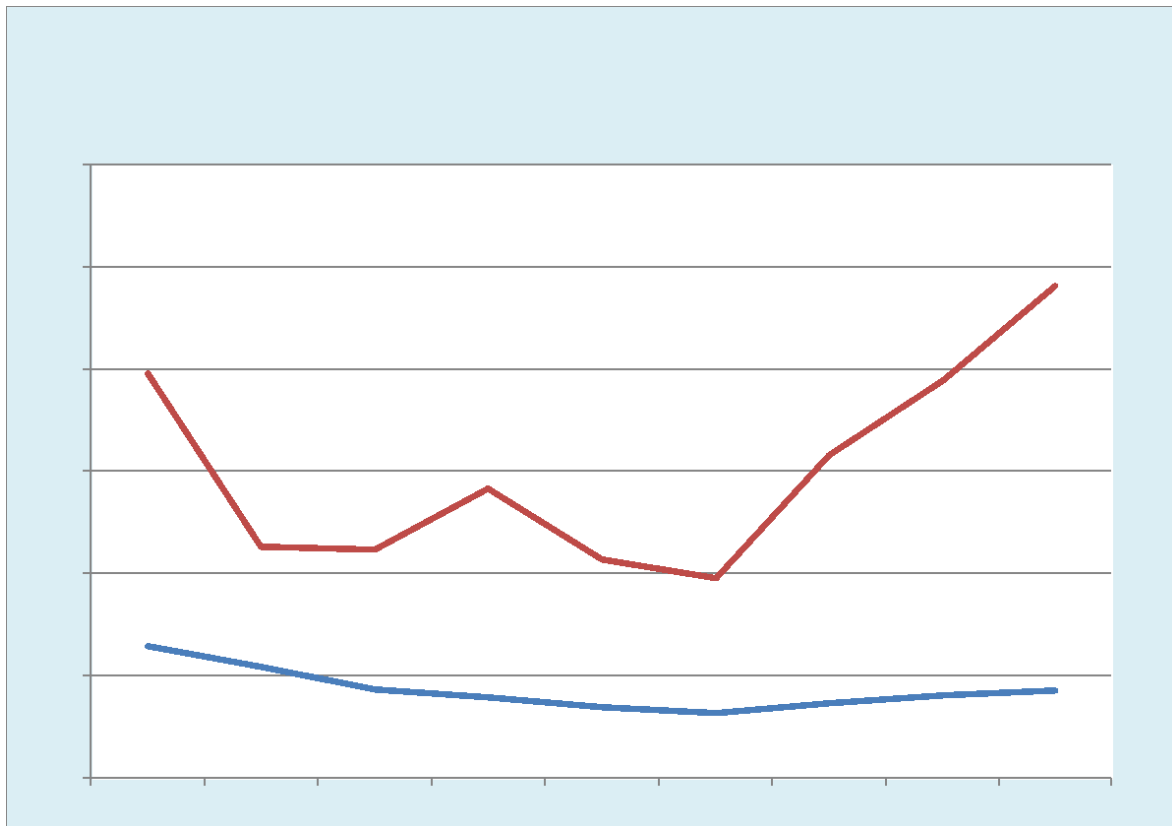
<https://www.edmonton.ca/graffiti>



## Results of the Edmonton Audit

During the 2019 graffiti audit, the audit crew observed graffiti vandalism at 426 locations where graffiti vandalism was present, an increase of 5% over the number of locations observed in 2017. In 2017 there were 405 locations. The number of locations where graffiti was observed in 2019 increased by 17% compared to 2016 (365 locations) and by 31% compared to 2015 (322 locations). Data shows steady upward trend in the number of locations where graffiti is observed since 2015.

**Figure 1 - Locations & Tag Count Summary**



## Neighbourhood Graffiti Index & Rankings

A graffiti index was determined for each overall neighbourhood examined and for each “hot spot” and “random” sample area. Table 1 presents the “graffiti index” for each sample area.

**Table 1 - Neighbourhood Graffiti Index Results 2019**

	Graffiti in Hot Spot 2019	Graffiti in Hot Spot 2017	Area Hot (Ha)	Index Hot Spot 2019	Index Hot Spot 2017	Index Hot Spot 2016	Graffiti in Random 2019	Graffiti in Random 2017	Area Random (Ha)	Index Random 2019	Index Random 2017	Index Random 2016
Alberta Ave	11	17	22.63	0.49	0.75	1.105	20	10	28.122	0.711	0.356	0.569
Beacon Heights	Not audited	5	28.68	NA	0.17	0.209	Not audited	1	28.751	NA	0.035	0.452
Belvedere	Not audited	19	25.92	NA	0.73	0.077	Not audited	5	34.713	NA	0.144	0.346
Beverly Heights	Not audited	4	22.60	NA	0.18	0.133	Not audited	2	16.177	NA	0.124	0.680
Bonnie Doon	35	Not audited					2	Not audited				
Boyle Street	55	90	34.84	1.58	2.58	2.468	23	19	22.789	1.009	0.834	0.395
Calgary Trail North / South	14	Not audited					6	Not audited				
Central McDougall	59	39	40.77	1.45	0.96	0.662	6	7	37.056	0.162	0.189	0.162
CPR West/Strathcona Junction	124	146	13.33	9.30	10.95	7.499	13	8	26.033	0.499	0.307	0.192
Delton	6	Not audited					1	Not audited				
Downtown	238	205	50.67	4.70	4.05	3.513	237	178	48.353	4.901	3.681	2.792
Eastwood	Not audited	17	28.20	Not audited	0.60	0.780	Not audited	29	33.188	NA	0.874	0.994
Garneau	64	178	16.28	3.93	10.93	5.651	38	12	20.389	1.864	0.589	0.343
Inglewood	Not audited	15	43.32	Not audited	0.35	0.208	Not audited	0	23.952	NA	0.000	0.125
King Edward Park	78	Not audited					29	Not audited				
Kirkness	0	Not audited					3	Not audited				
Killarney	Not audited	13	29.30		0.44	0.068	Not audited	14	23.275	NA	0.602	1.375
McCauley	25	16	19.64	1.27	0.81	1.120	182	126	31.754	5.732	3.968	1.228
Oliver	50	40	32.32	1.55	1.24	0.464	40	5	28.786	1.390	0.174	0.313
Parkdale	Not audited	2	30.97	Not audited	0.06	0.129	Not audited	3	29.567	NA	0.101	0.203
Queen Alexandra	260	320	24.78	10.49	12.92	6.780	30	2	26.733	1.122	0.075	0.224
Queen Mary Park	17	12	34.24	0.50	0.35	0.204	19	12	40.592	0.468	0.296	0.049
Ritchie	105	105	25.70	4.09	4.09	7.239	8	6	34.079	0.235	0.176	0.059
Spruce Avenue	11	Not audited					3	Not audited				
Strathcona	500	235	23.83	20.98	9.86	10.492	22	6	21.288	1.033	0.282	0.470
Thorncliff	8	Not audited					9	Not audited				
Westmount	52	24	21.05	2.47	1.14	0.665	4	0	24.678	0.162	0.000	0.041
<b>Total</b>	<b>1,712</b>	<b>1,502</b>	<b>Average</b>	<b>4.83</b>	<b>3.16</b>	<b>2.473</b>	<b>696</b>	<b>445</b>	<b>Average</b>	<b>1.48</b>	<b>0.640</b>	<b>0.577</b>
<b>20 neighbourhoods in 2019</b>												

The graffiti index is a way of examining the observations of graffiti in an indexed numerical comparison. Above in Table 1, we present the graffiti indexes for the "hot spot" and the "random areas." In Table 2, on the next page, the combined graffiti index for each neighbourhood is presented.

For the hot spot areas, the average graffiti index increased considerably in 2019 to 4.83 compared to the average index in 2017, which was 3.16 indicating a significant increase in graffiti tags in the current audit. It should be noted that these indexes have risen considerably in the past three audits in a row. (The combined index has risen to 3.09 in 2019 compared to 1.512 in 2016 (refer to Table 2, Page 14), confirming that significantly more graffiti was observed during the 2019 study compared to previous audits.

DRAFT

Table 2 - Combined Neighbourhood Graffiti Index Results 2019

2019	Total Graffiti in Neighbourhood	Total Area	2019 Combined Index	2017 Combined Index	2016 Combined Index	2015 Combined Index	2014 Combined Index	2013 Combined Index	2012 Combined Index	2011 Combined Index	2010 Combined Index
Alberta Ave	31	50.8	0.61	0.532	0.837	1.222	0.650	0.788	1.281	0.414	1.380
Beacon Heights	Not audited	57.4		0.104	0.331	0.104	0.035	0.226	0.087	0.209	0.450
Belvedere	Not audited	60.6		0.396	0.211	0.165	0.775	0.924	0.676	0.742	0.480
Beverly Heights	Not audited	38.8		0.155	0.406	0.077	0.258	0.052	0.181	0.181	0.310
Bonnie Doon	37										
Boyle Street	78	57.6	1.35	1.891	1.432	0.746	1.718	1.249	1.423	2.290	3.110
Calgary Trail North / South	20										
Central McDougall	65	77.8	0.84	0.591	0.412	0.218	0.296	0.553	1.208	1.105	1.750
CPR West/Strathcona Junction	137	39.4	3.48	3.912	3.846	0.965	1.676	1.524	0.432	0.660	0.580
Delton	7										
Downtown	476	99.0	4.81	3.868	3.152	2.626	2.272	3.282	1.464	2.797	4.420
Eastwood	Not audited	61.4	Not audited	0.749	0.887	1.042	0.538	1.727	0.766	0.358	1.030
Garneau	102	36.7	2.78	5.182	2.997	0.927	1.964	3.273	2.727	0.818	3.490
Inglewood	Not audited	67.3	Not audited	0.223	0.167	0.045	0.104	0.149	0.357	0.431	0.830
King Edward Park	107										
Kirkness	3										
Killamney	Not audited	52.6	Not audited	0.514	0.722	0.266	0.495	0.495	0.894	0.476	1.080
McCauley	207	51.4	4.03	2.763	1.174	2.121	0.837	1.206	1.265	0.778	1.480
Oliver	90	61.1	1.47	0.736	0.388	0.425	0.184	0.736	0.442	1.326	1.900
Parkdale	Not audited	60.5	Not audited	0.083	0.166	0.330	0.149	0.842	0.396	0.198	0.680
Queen Alexandra	290	51.5	5.63	6.261	3.502	1.320	1.534	2.330	0.330	0.654	1.340
Queen Mary Park	36	74.8	0.48	0.321	0.127	0.334	0.628	0.321	1.176	0.788	0.800
Ritchie	113	59.8	1.89	1.857	3.649	0.368	1.305	0.284	0.552	0.586	1.360
Spruce Avenue	14										
Strathcona	522	45.1	11.57	5.342	5.481	3.147	2.992	4.500	2.549	2.327	4.720
Thorncliff	17										
Westmount	56	45.7	1.22	0.525	0.353	0.241	0.591	0.416	1.662	0.984	2.580
			Average	Average	Average	Average	Average	Average	Average	Average	Average
Total	2,408	1,149	3.09	1.800	1.512	0.835	0.949	1.243	0.993	0.916	1.639

In examining the indexed level of graffiti, it is clear that tagging has increased significantly since 2016. Some of the neighbourhoods exhibited significant increased tagging compared to the 2017 audit are listed below in Table 3. Strathcona is particularly noteworthy, as this neighbourhood has historically been one of the most tagged areas regularly audited. In 2019 the combined index rose 117% confirming significantly more tagging activity compared to 2017. Although Westmount exhibited a greater change in graffiti index, it was on a relatively small number of tags observed.

Table 3 - Significant Changes in Graffiti by Neighbourhood

	Index Increase		Index Decrease
<b>Increased Activity</b>		<b>Decreased Activity</b>	
Westmount	133%	Boyle Street	-28%
Strathcona	117%	Garneau	-46%
Oliver	100%	CPR West/Strathcona Junction	-11%
Queen Mary Park	50%	Queen Alexandra	-10%
McCauley	46%		
Central McDougall	41%		
Downtown	24%		

DRAFT

**Table 4 - Graffiti Occurrence by Neighbourhood Sampled**

Neighbourhood	Locations	Tags Observed in 2019	% of total observed	Tags Observed in 2017	% of total observed (2017)
Alberta Ave		31	1.3%	27	1.4%
Beacon Heights	Not audited	Not audited	Not audited	Not audited	Not audited
Belvedere	Not audited	Not audited	Not audited	Not audited	Not audited
Beverly Heights	Not audited	Not audited	Not audited	Not audited	Not audited
Bonnie Doon		37	1.5%		
Boyle Street		78	3.2%	109	5.6%
Calgary Trail North / South		20	0.8%		
Central McDougall		65	2.7%	46	2.4%
CPR West/Strathcona Junction		137	5.7%	154	7.9%
Delton		7	0.3%		
Downtown		475	19.7%	383	19.7%
Eastwood	Not audited	Not audited	Not audited	Not audited	Not audited
Garneau		102	4.2%	190	9.8%
Inglewood	Not audited	Not audited	Not audited	Not audited	Not audited
King Edward Park		107	4.4%		
Kirkness		3	0.1%		
Killarney	Not audited	Not audited	Not audited	Not audited	Not audited
McCauley		207	8.6%	142	7.3%
Oliver		90	3.7%	45	2.3%
Parkdale	Not audited	Not audited	Not audited	Not audited	Not audited
Queen Alexandra		290	12.0%	322	16.5%
Queen Mary Park		36	1.5%	24	1.2%
Ritchie		113	4.7%	111	5.7%
Spruce Avenue		14	0.6%		
Strathcona		522	21.7%	241	12.4%
Thorncliff		17	0.7%		
Westmount		56	2.3%	24	1.2%
		2,408	100%		

The Strathcona, Downtown, Queen Alexandra, McCauley, CPR West/Strathcona Junction, and Ritchie neighbourhoods once again were neighbourhoods that were significantly tagged. These six neighbourhoods represent 72% of the total graffiti observed in the current audit.

Another neighbourhood with significantly rising tagger activity was Oliver with a 100% increase in the number of tags, as was McCauley with a 46% increase in tagging activity. Westmount increased by 133%, but on a relatively smaller number of tags that the other neighbourhoods highlighted.

DRAFT

In each of the graffiti vandalism audits, unidentifiable (unknown) taggers are the largest single tagger group identified. When identifiable tags are examined, a relatively small number of individual taggers account for a significant amount of the graffiti in Edmonton. In 2019 there were 887 unknown tags recorded compared to 505 tags in 2017 and 567 in 2016. In the current study auditors were able to read 63% of the tags observed compared to 74% of the tags observed in 2017.

**Table 5 – Prominent Taggers Observed**

<b>Most Active Taggers - 2019</b>			
<b>Rank</b>	<b>Tagger</b>	<b>Tags</b>	<b>% of Identified Tags</b>
1	Howdy	61	2.5%
2	Worm	48	2.0%
3	Burd	43	1.8%
4	Ness One	41	1.7%
5	Peach	37	1.5%
6	Only	33	1.4%
7	Cuzo	28	1.2%
8	Vaser	28	1.2%
9	Party	19	0.8%
10	Fendi	17	0.7%
11	Jinx	17	0.7%
12	Oat	17	0.7%
13	Bike	15	0.6%
14	EBear	15	0.6%
15	Busy	13	0.5%
16	Beez	12	0.5%
17	Beans	11	0.5%
18	Danito	11	0.5%
19	Mold	10	0.4%
20	Pear	10	0.4%
21	Wurm	10	0.4%
22	Atlas	9	0.4%
23	Owl	9	0.4%
24	Bear	8	0.3%
25	Nose	8	0.3%
26	Somad	8	0.3%
27	Bees	7	0.3%
28	Laser	7	0.3%
29	SNY	7	0.3%
30	BQ	6	0.2%
		<b>565</b>	<b>23.5%</b>

In the 2019 observations, some new and significant taggers have surfaced in Edmonton. The most observed tagger was Howdy, with 61 tags; followed by Worm at 48, then Burd at 43. Tags observed as NessOne, Peach and Only were also prominent in 2019 at 41, 37 and 33 tags respectively.

Table 6 below, describes the most active taggers by neighbourhood during the 2019 graffiti audit.

DRAFT

Table 6 - Neighbourhood Graffiti - Most Active Taggers – 2019

Neighbourhood	Graffiti Observed in Neighbourhood	Count by tagger	Tagger	Count by tagger	Tagger	Count by tagger	Tagger
<b>Alberta Avenue</b>	31	12	UNKNOWN				
% of total graffiti 2019	1.3%	1	Bonita 2019	1	MK1%		
% of total graffiti 2017	1.4%	1	Fendi	1	MKB SageUI		
% of total graffiti 2016	2.6%	1	GC	1	OG look		
% of total graffiti 2015	6.3%	1	Gold Could Care Less	1	Owl		
% of total graffiti 2014	3.1%	1	Gucci	1	Peach		
% of total graffiti 2013	2.8%	1	If	1	Rite		
% of total graffiti 2012	5.5%	1	Logan Westchester	1	Sasz		
% of total graffiti 2011	1.9%	1	LRA	1	SVS*		
		1	Lustics Scott#7	1	TZ		
				1	UFOs		
<b>Bonnie Doon</b>	37	12	UNKNOWN				
% of total graffiti 2019	1.5%	1	Bang				
% of total graffiti 2017	1.4%	1	EBear				
% of total graffiti 2016	2.6%	1	LOL				
% of total graffiti 2015	6.3%	1	Manik				
% of total graffiti 2014	3.1%	1	Moar				
% of total graffiti 2013	2.8%	1	Party's				
% of total graffiti 2012	5.5%	1	Seez				
% of total graffiti 2011	1.9%	1	Sober				
<b>Boyle Street</b>	79	35	UNKNOWN				
% of total graffiti 2019	3.3%	1	Bonita 2019	1	MK1%		
% of total graffiti 2017	1.4%	1	Fendi	1	MKB SageUI		
% of total graffiti 2016	2.6%	1	GC	1	OG look		
% of total graffiti 2015	6.3%	1	Gold Could Care Less	1	Owl		
% of total graffiti 2014	3.1%	1	Gucci	1	Peach		
% of total graffiti 2013	2.8%	1	If	1	Rite		
% of total graffiti 2012	5.5%	1	Logan Westchester	1	Sasz		
% of total graffiti 2011	1.9%	1	LRA	1	SVS*		
		1	Lustics Scott#7	1	TZ		
				1	UFOs		
<b>Calgary Trail North/South</b>	20	4	UNKNOWN				
% of total graffiti 2019	0.8%	2	Burd	1	Ohno		
% of total graffiti 2017	1.4%	1	Abeab	1	Only		
% of total graffiti 2016	2.6%	1	Bawl	1	RIP Narcus		
% of total graffiti 2015	6.3%	1	Booin	1	Spooks		
% of total graffiti 2014	3.1%	1	Faire				
% of total graffiti 2013	2.8%	1	Howdy				
% of total graffiti 2012	5.5%	1	Kook				
% of total graffiti 2011	1.9%	1	Nuwf1				
<b>Central McDougall</b>	65	14	UNKNOWN				
% of total graffiti 2019	2.7%	8	Peach	1	Bike	1	Manki
% of total graffiti 2017	1.4%	7	NessOne	1	Bobby	1	Miss You
% of total graffiti 2016	2.6%	3	Danito	1	Bukcho	1	Party
% of total graffiti 2015	6.3%	2	Biker	1	Clown Life	1	RapCats
% of total graffiti 2014	3.1%	2	Sees	1	Convict	1	Scotty
% of total graffiti 2013	2.8%	1	AceFN	1	FASAP		
% of total graffiti 2012	5.5%	1	Always Striving	1	FendiOne		
% of total graffiti 2011	1.9%	1	ASAP	1	Handle This		
		1	Bame	1	If God		
		1	Beens	1	Love You		
		1	Beezy	1	Lucifer Lives		

# Edmonton Graffiti Report 2019

DRAFT

<b>Delton</b>	7	1	UNKNOWN				
% of total graffiti 2019	0.3%	2	Ganbo				
% of total graffiti 2017	1.4%	1	*S2				
% of total graffiti 2016	2.6%	1	Alpha				
% of total graffiti 2015	6.3%	1	Daily				
% of total graffiti 2014	3.1%	1	The Heart is Wicked				
% of total graffiti 2013	2.8%						
% of total graffiti 2012	5.5%						
% of total graffiti 2011	1.9%						
<b>Downtown</b>	475	189	UNKNOWN				
% of total graffiti 2019	19.7%	22	Howdy	1	Cathedral	1	Only
% of total graffiti 2017	1.4%	11	Burd	1	CESY	1	Oreo PQ
% of total graffiti 2016	2.6%	10	Worm	1	Cgns	1	OROOL
% of total graffiti 2015	6.3%	7	Danito	1	Cord	1	Oshea
% of total graffiti 2014	3.1%	5	Ebear	1	Coure	1	Party Bike
% of total graffiti 2013	2.8%	5	Jinx	1	Creeb	1	Pasta
% of total graffiti 2012	5.5%	5	Nose	1	Cuzo	1	PAT
% of total graffiti 2011	1.9%	4	Beans	1	Deny	1	Pear
		4	Bones	1	Docor	1	Penopy
		4	Oat	1	Donito	1	Pito
		4	Wurm	1	Doudhe	1	Pukes
		3	Bees	1	Downtown	1	Purfume
		3	E	1	Dred	1	PV
		3	Fendi	1	DTB	1	RA
		3	Nervis	1	Ebucco	1	Raare
		3	Peach	1	Etta	1	Rappar
		3	Stoner	1	Fablo	1	RAY
		3	TZ	1	Fools	1	Red
		2	ALEIS	1	Fuzzy	1	Rem
		2	ANARRI	1	Geeb	1	REM F NAZIS
		2	Bame	1	Good Boys	1	Reng
		2	Beavis	1	Heave	1	Renor
		2	Bikes	1	Heaveover	1	Resplendent
		2	Boans	1	Hobo	1	Return Home
		2	BQ	1	Hokes	1	RMI
		2	Cool	1	Homoh	1	Rube
		2	Laser	1	Hootney	1	Run
		2	Owl	1	Huck	1	Ruse
		2	Penis	1	I Love You More	1	RYP cyl
		2	Rio	1	I'm A One	1	SEL9
		2	SEES	1	Indian Express	1	SEEB
		1	2019	1	Insane	1	Seka
		1	18Seka	1	Intunzfromhell	1	Shook
		1	3THR33	1	IScream	1	Skub
		1	4Local	1	JDS	1	SO
		1	4LOKO	1	K	1	Stay Cooked
		1	AFN	1	KA	1	Staff
		1	Amuse26	1	Kage	1	Switch
		1	Baabyface780	1	KD	1	Switch God Only
		1	Back	1	Kilo	1	Tecaster
		1	Baki	1	Kira	1	Thanks
		1	BAMEB	1	Kosa	1	The Struggle
		1	Bank	1	KR	1	Tiny
		1	Bannerz	1	Krazy	1	Today's
		1	Bbj	1	Laber Party	1	Trayway
		1	Beez	1	LiveForThe Day	1	Vcat
		1	Bewscrows	1	Loser	1	Viser Party
		1	Bike Party	1	M	1	Vyser
		1	BikeParty18	1	Mature Taste	1	WGRM
		1	Biker	1	MEAB	1	Wanks
		1	Bite	1	Meagan	1	WPV
		1	BLU	1	MeaganFruitCup	1	WR
		1	Blue	1	Mento	1	WRT
		1	BlueTMC	1	Merlotism	1	Wto
		1	Boanes	1	MN	1	Zack is Pedro
		1	Bob	1	MO	1	Zooker
		1	Bost	1	Mobiel		
		1	Breaks	1	MSB		
		1	Buser	1	Nervous		
		1	Bush	1	NessOne		
		1	Cash	1	Oniks		

# Edmonton Graffiti Report 2019

DRAFT

<b>Garneau</b>	102	29	UNKNOWN				
% of total graffiti 2019	4.2%	22	Howdy	3	Bees	2	Bikes
% of total graffiti 2017	1.4%	11	Burd	3	E	2	Boans
% of total graffiti 2016	2.6%	10	Worm	3	Fendi	2	BQ
% of total graffiti 2015	6.3%	7	Danito	3	Nervis	2	Cool
% of total graffiti 2014	3.1%	5	Ebear	3	Peach	2	Las er
% of total graffiti 2013	2.8%	5	Jinx	3	Stoner	2	Owl
% of total graffiti 2012	5.5%	5	Nase	3	TZ	2	Penis
% of total graffiti 2011	1.9%	4	Beans	2	ALES	2	Rip
		4	Bones	2	ANARRI	2	SEES
		4	Oat	2	Bam e		
		4	Wurm	2	Beavis		
<b>Kino Edward Park</b>	107	26	UNKNOWN				
% of total graffiti 2019	4.4%	5	Howdy	1	Bannaz	1	Peachy
% of total graffiti 2017	1.4%	5	Mold	1	Bear	1	Penis
% of total graffiti 2016	2.6%	5	Ness One	1	Bees	1	Pride
% of total graffiti 2015	6.3%	4	Bike	1	Blank	1	PTS
% of total graffiti 2014	3.1%	4	Brook	1	Brin	1	Randys
% of total graffiti 2013	2.8%	4	Peach	1	Bus er	1	RBE
% of total graffiti 2012	5.5%	4	RIP Magdalene Berns	1	DOM	1	Rurel
% of total graffiti 2011	1.9%	4	Vas er	1	EBear	1	Starz
		3	4 Loko	1	Erwut	1	TRIO UT
		3	Only	1	Fairo	1	Wurm
		3	Waps	1	Halley		
		2	Byke	1	Jinx		
		2	Nape	1	Kill Proud Boys		
		2	Sike	1	Laber		
		2	Saber	1	Nervis		
		1	Absnt		Paste		
<b>Kirkness</b>	3	2	UNKNOWN				
% of total graffiti 2019	0.1%	1	Rash				
<b>McCaughey</b>	207	72	UNKNOWN				
% of total graffiti 2019	8.6%	10	Fendi	1	Frands	1	Ran
% of total graffiti 2017	1.4%	5	VASER	1	Free My Man	1	Ras Loves
% of total graffiti 2016	2.6%	3	Howdy	1	G Pillow	1	Rast
% of total graffiti 2015	6.3%	3	Ness One	1	Gabe	1	Reme
% of total graffiti 2014	3.1%	3	RA	1	Gibot	1	Remember Jesus
% of total graffiti 2013	2.8%	2	Bee Was Here	1	Goin Gain Back	1	Ren
% of total graffiti 2012	5.5%	2	Bike	1	Hootnol	1	Respect
% of total graffiti 2011	1.9%	2	Cuzo	1	Hump	1	Rite
		2	Dazor	1	I Love Life	1	ROP
		2	Mayoe	1	I Love You	1	Ros eknife
		2	Richard	1	It	1	RS K
		2	Spy	1	Janice	1	RZP
		1	75	1	Joe Boo	1	Saddle Lake
		1	2H	1	June	1	Sanders on
		1	A	1	Just Die	1	Silas
		1	Baby Joe	1	Kam	1	South Demon
		1	Bear Ghost Rider	1	Karen	1	Space Junkies
		1	Beaver Lake	1	KATS	1	SS
		1	Beez	1	Keehewin	1	Stiffna
		1	Blaze Boy	1	Kisses	1	Stoner
		1	Boans	1	Kook	1	STR8
		1	BQ	1	LE	1	Sunshine
		1	Ca Moy	1	Lee and DE	1	Tap
		1	Cam	1	Lenny	1	Teeze
		1	Cap	1	Luck	1	Tony B
		1	Cash	1	Luv You	1	Trayway
		1	CB	1	Mo	1	Tre
		1	Churnne SCHWARTZ	1	N	1	TRXN
		1	Cley	1	Nat	1	TZ
		1	CM	1	Natisha	1	Vas e
		1	Conner	1	Native Nations	1	Volbeat
		1	Croaz	1	Nira	1	What lives
		1	CS	1	Northern Cree	1	Z
		1	Daddy	1	OOOO		
		1	Dame	1	Perry No one		
		1	Faith	1	Please Help		
		1	Family	1	Pooh pooh		
		1	Fisu	1	Prob Rat Goof		



# Edmonton Graffiti Report 2019

DRAFT

<b>Oliver</b>	90	41	UNKNOWN				
% of total graffiti 2019	3.7%	7	Howdy	1	Joker	1	VASER
% of total graffiti 2017	1.4%	3	Bike	1	Laser	1	Zefbae
% of total graffiti 2016	2.6%	2	Jinx	1	Loko		
% of total graffiti 2015	6.3%	2	Party	1	Meats		
% of total graffiti 2014	3.1%	2	Shilo	1	No		
% of total graffiti 2013	2.8%	2	Somad	1	Oper		
% of total graffiti 2012	5.5%	2	Zole	1	Peach		
% of total graffiti 2011	1.9%	1	Ath	1	Phent		
		1	Ask	1	Pierv		
		1	Beans	1	PirateBeans		
		1	BSK	1	RA		
		1	Burd	1	Rak		
		1	Ctyb I Love You	1	Rsk		
		1	Cuzo	1	Sry		
		1	Daniq	1	TGB		
		1	Dred	1	Think		
		1	IsRTS Ready	1	Tweek		
<b>Queen Alexandra</b>	290	106	UNKNOWN				
% of total graffiti 2019	12.0%	9	Howdy	1	Biker	1	Lsd
% of total graffiti 2017	1.4%	9	Only	1	Boog	1	Maazz
% of total graffiti 2016	2.6%	8	Worm	1	Bruz	1	Mmbgr
% of total graffiti 2015	6.3%	6	Beez	1	Buggie	1	Moretem
% of total graffiti 2014	3.1%	6	Burd	1	Busk	1	Mv
% of total graffiti 2013	2.8%	5	Party	1	Bustop	1	Nobats
% of total graffiti 2012	5.5%	4	Atlas	1	Busy	1	Nose
% of total graffiti 2011	1.9%	4	Cuzo	1	Carma	1	Oapt
		4	Mold	1	Caser	1	Orhz
		3	Bees	1	Casrer	1	Peach
		3	Laser	1	Cassitopela	1	Pierat
		3	NessOne	1	Ceeusbq	1	Plc5+4
		3	Pear	1	Cesy	1	Pmats
		3	Zous	1	Clso	1	Pz6
		2	Bare	1	Coagl	1	Ratz
		2	Ceasse	1	Comfy	1	Renu
		2	Goof pedo	1	Croy	1	Rez Dog
		2	Jinx	1	D4x	1	Rezwashere
		2	Kira	1	Dink	1	Rule
		2	Laser Party	1	Dn	1	Sak
		2	Oapt	1	Dnw	1	Sb
		2	Peaches	1	Drk	1	Sbno
		2	Peaches	1	Enuks	1	Sbr
		2	Rovk2	1	Eternity	1	Sees
		2	Ruse	1	Fario	1	Sovled
		2	Saint	1	Fourloko	1	Sperza
		2	Somad	1	Frek	1	Suss
		2	Weab	1	Fw	1	Tanky
		1	Alter	1	Ghost	1	Thants
		1	Babs	1	Good	1	Usq
		1	Bake	1	Graffiti	1	Waer
		1	Baz	1	Hanes	1	Wawky
		1	Beans	1	Her	1	Zefbae
		1	Beaor	1	Kalesha	1	Zoze
		1	Bear	1	Love		
		1	Bes	1	Loves		
<b>Queen Mary Park</b>	36	12	UNKNOWN				
% of total graffiti 2019	1.5%	3	Duhi	1	Joker		
% of total graffiti 2017	1.4%	2	Panito	1	May		
% of total graffiti 2016	2.6%	1	AB	1	NessOne		
% of total graffiti 2015	6.3%	1	BA	1	Oat		
% of total graffiti 2014	3.1%	1	Bcm	1	Oat Pok		
% of total graffiti 2013	2.8%	1	BMC	1	PB447		
% of total graffiti 2012	5.5%	1	Bobo	1	Red Till Dead		
% of total graffiti 2011	1.9%	1	Danito	1	Shmurpap El Trappo		
		1	DPM Loves	1	Slime Season		
		1	Jinx	1	W		
				1	Worm		

# Edmonton Graffiti Report 2019

<b>Ritchie</b>	<b>113</b>	<b>34</b>	<b>UNKNOWN</b>				
% of total graffiti 2019	4.7%	5	Howdy	1	Bink	1	Oboo
% of total graffiti 2017	1.4%	4	Burd	1	Boo	1	Olyso
% of total graffiti 2016	2.6%	4	Peach	1	Breaze	1	Onfire
% of total graffiti 2015	6.3%	4	Worm	1	Bwg	1	Peaez37
% of total graffiti 2014	3.1%	3	Bye	1	Byykver	1	Ratn
% of total graffiti 2013	2.8%	3	Dc	1	Cv	1	Renu
% of total graffiti 2012	5.5%	2	Busy	1	Daily	1	Sabr
% of total graffiti 2011	1.9%	2	Busy	1	Dinx	1	Spam
		2	Ebear	1	Dooer	1	Stare
		2	Ness One	1	Fler	1	Sump
		2	Nilp	1	Hwadys	1	Suspect07
		2	Party	1	JB	1	Teisa
		2	Rurge	1	Joecey	1	The guy
		1	Andrigez	1	Karo	1	Thorn
		1	Aos	1	Laser	1	Ud
		1	Atlas	1	Mobes	1	Wavy7 E19hhy
		1	Banq	1	Nesqve		Woaf
		1	Bay	1	Niln		
		1	Bhalr	1	Nofear		
<b>Spruce Avenue</b>	<b>113</b>	<b>5</b>	<b>UNKNOWN</b>				
% of total graffiti 2019	4.7%	1	Daily				
% of total graffiti 2017	1.4%	1	DZOB				
% of total graffiti 2016	2.6%	1	Earned My Respect				
% of total graffiti 2015	6.3%	1	Gangsta				
% of total graffiti 2014	3.1%	1	KHY				
% of total graffiti 2013	2.8%	1	NBU				
% of total graffiti 2012	5.5%	1	RA				
% of total graffiti 2011	1.9%	1	RA88				
		1	SHIE				

Tale 6 – Continued on Next Page.

# Edmonton Graffiti Report 2019

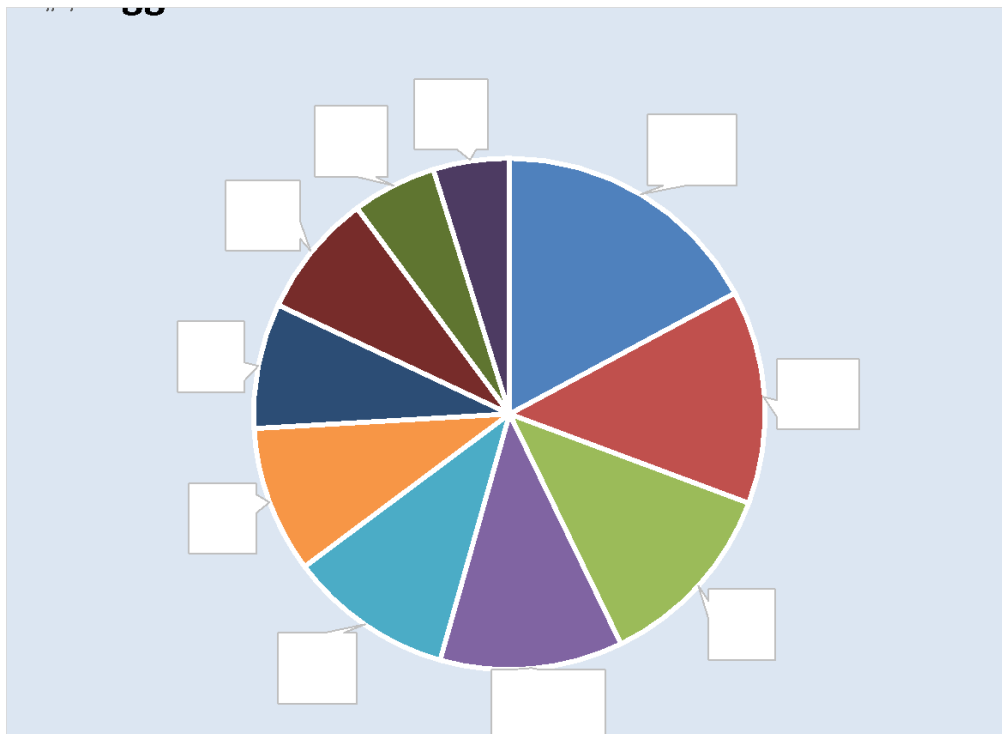
DRAFT

Strathcona	522	214	UNKNOWN				
% of total graffiti 2019	21.7%	15	Ness One	1	Bmx	1	LusidEnots
% of total graffiti 2017	1.4%	11	Cuzo	1	Boons	1	Maser
% of total graffiti 2016	2.6%	11	Peach	1	Bozo	1	Meab
% of total graffiti 2015	6.3%	7	Busy	1	Bpme	1	Med8
% of total graffiti 2014	3.1%	6	Burd	1	Bul	1	Mervis
% of total graffiti 2013	2.8%	6	EBear	1	BYKE party	1	Mike Turpin
% of total graffiti 2012	5.5%	6	Sry	1	Caad	1	Miw
% of total graffiti 2011	1.9%	6	Worm	1	CARMA one	1	Moes
		5	Only	1	Cgm	1	Mold
		4	Atlas	1	Cloud	1	Nas
		4	Docer	1	Cory gates 19xx	1	Nlf
		4	Jinx	1	Crew	1	Noollak
		4	Oat	1	Crma	1	NosOne
		3	Acab	1	Csra	1	O
		3	Babe	1	Cuzo 18	1	OrcaSP
		3	Beans	1	Dakito	1	P
		3	Beans	1	Decor	1	Party
		3	Bear	1	Delete this	1	PartyParty
		3	Bike	1	Dotito	1	Peac
		3	BQ	1	Down	1	Pear
		3	E	1	Drinkz	1	Pen15
		3	Ham	1	Dusdy	1	Pesol
		3	Howdy	1	Dzer	1	Pres
		3	Ness	1	Elvis	1	Raspe
		3	Owl	1	Enots 19Muddguts	1	Ratz
		3	Ruse	1	Eov	1	Reel
		3	Vaser	1	Equle	1	Rent
		2	Bame	1	ETS	1	RH
		2	BB	1	Faire	1	Rsd
		2	Bame	1	Forgiven	1	Rugo
		2	BB	1	Ftp	1	Runt
		2	Beez	1	Ghost	1	S
		2	Bokse	1	GodHelp	1	Savior
		2	Dred	1	Grma	1	Sbr
		2	Love	1	GrowUp	1	seka
		2	Mose	1	Gsee	1	Send it
		2	Ns4K	1	Gswee	1	Shy
		2	OnOne	1	Half	1	Sight
		2	R	1	Hat	1	Somad
		2	Rat	1	Hawk	1	Spiffy
		2	Thot	1	Heave	1	Ss
		2	Zoe	1	Henri	1	Syser
		1	1713	1	Hirok	1	Tada
		1	F You	1	Hmwsh	1	Terb
		1	lib	1	Honey	1	ThinkYrCool
		1	AB	1	HowlParty	1	Tpr
		1	AchtungLook	1	HStar	1	Triout
		1	AE	1	If You Smash It Stash	1	Tyrat
		1	Aleag	1	ILoveMyBaby	1	Vismis
		1	Aleas	1	Jacob Escobar	1	Vulgar text
		1	Atw	1	jCat	1	Wasted
		1	Awks	1	KeepitFine	1	Woe
		1	Bam at	1	If You Smash It Stash	1	Woe2
		1	Bam er z	1	ILoveMyBaby	1	Wont Stop
		1	Bam s	1	Jacob Escobar	1	Years
		1	Baser	1	jCat	1	Zol
		1	Bat	1	KeepitFine	1	Zoo
		1	Be Excellent	1	Koolebie	1	Zozo
		1	Beam	1	Kr		
		1	Beams	1	Kraft		
		1	Beezy	1	Krapeat		
		1	Bekay	1	Laber		
		1	Bike Party	1	LaberParty		
		1	Blase	1	Loooooser		
		1	Bm c	1	Luke		

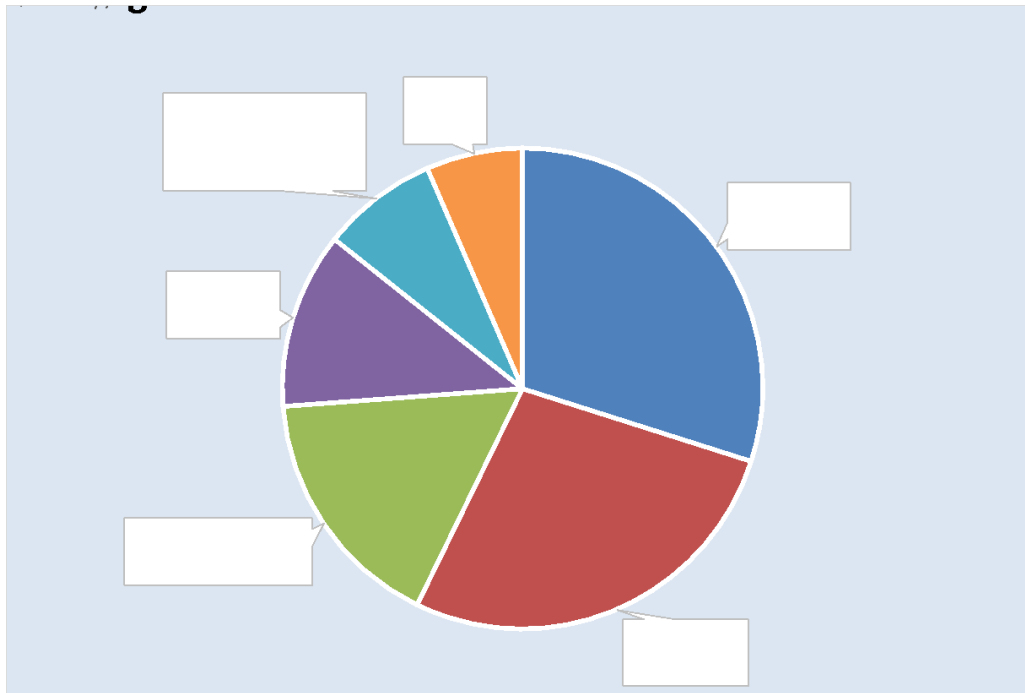
DRAFT

<b>Thorncilff</b>	<b>17</b>	<b>7</b>	<b>UNKNOWN</b>				
% of total graffiti 2019	0.7%	2	Owl	1	Rite		
% of total graffiti 2017	1.4%	2	Tab	1	Fox		
% of total graffiti 2016	2.6%	1	Em o	1	Token		
% of total graffiti 2015	6.3%	1	Enots	1	Hipe		
% of total graffiti 2014	3.1%						
% of total graffiti 2013	2.8%						
% of total graffiti 2012	5.5%						
% of total graffiti 2011	1.9%						
<b>Westmount</b>	<b>56</b>	<b>22</b>	<b>UNKNOWN</b>				
% of total graffiti 2019	2.3%	4	NessOne	1	Caso	1	Only
% of total graffiti 2017	1.4%	2	ALEIS	1	Crack	1	Peach
% of total graffiti 2016	2.6%	2	Check	1	DKS	1	Phent
% of total graffiti 2015	6.3%	2	Worm	1	Drink	1	Sem so
% of total graffiti 2014	3.1%	1	AOS	1	DWB	1	Sh
% of total graffiti 2013	2.8%	1	AWKS	1	Funhouse Inc	1	SNU
% of total graffiti 2012	5.5%	1	Bean	1	Joker	1	SNY
% of total graffiti 2011	1.9%	1	Burd	1	LC3HOMO	1	Wank
		1	Busy	1	Mush		
		1	Capet	1	Noxl		

Figure 2 - Top 10 Taggers in 2019



DRAFT

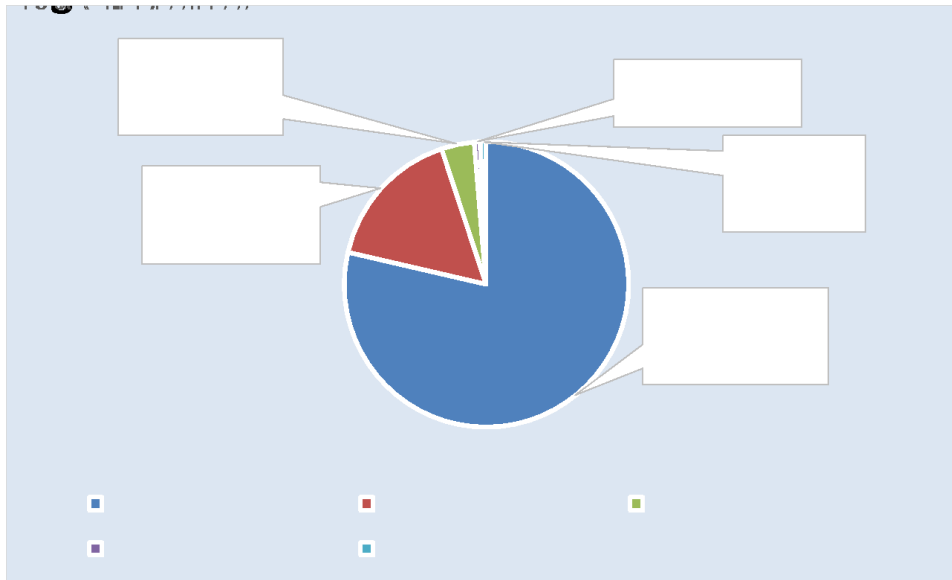
**Figure 3 - Six Most Active Neighbourhoods****Size & Descriptor of Graffiti**

In the 2019 audit the proportion of small tags was 79%, which was similar to the 2017 audit result, which was 82% of tags recorded as “small”. Medium sized tags were recorded at 16% compared to 8% of tags in 2017.

**Table 7 - Graffiti Observed in 2019 is Mainly Small**

		2019	
Imperial	Metric	Count	% of Total
Small (>1sq.ft < 2 sq. ft.)	>0.9 sq.M. <0.185 sq.M	1,892	79%
Med (>2sq.ft. <9 sq.ft.)	>0.185 sq.M<0.836 sq.M	393	16%
Large (>9 sq.ft.<20 sq.ft.)	>0.836 sq.M < 1.186 sq.M	89	4%
x-Small (<1 sq.ft.)	<.009 sq. M	17	1%
x-Large (> 20 sq.ft)	> 1.186 sq.M	16	1%
		2,407	100%

DRAFT

**Figure 4 - Sizes of Graffiti Observed in 2019**

Regarding the artistic nature of graffiti vandalism observed throughout all the graffiti audits conducted since 2010, graffiti appears to be scrolled quickly onto property, in a stylized design as free hand text and not completed with artistic intent. Of the 2,408 observations made in 2019; 96% were “text only” tags, which is consistent with observations made in previous audits.

DRAFT

**Table 8 – Styles of Graffiti Vandalism Observed in 2019**

Descriptor of Graffiti Observed				
		2019	2017	2016
	Count		% of Total	% of Total
Text only 1.	2,310	95.9%	96.7%	94.3%
Picture	62	2.6%	0.9%	2.9%
Vulgar Text	28	1.2%	0.6%	0.5%
Hate motif	4	0.2%		0.1%
Stencil 2.	1	0.0%	1.0%	1.3%
Vulgar Picture	1	0.0%	0.2%	0.1%
Racist	1	0.0%		0.0%
Religious	1	0.0%		0.0%
Splash/Slash 3.	0	0.0%	0.6%	0.9%
Political	0	0.0%		0.1%
	2,408	100%	100%	100%

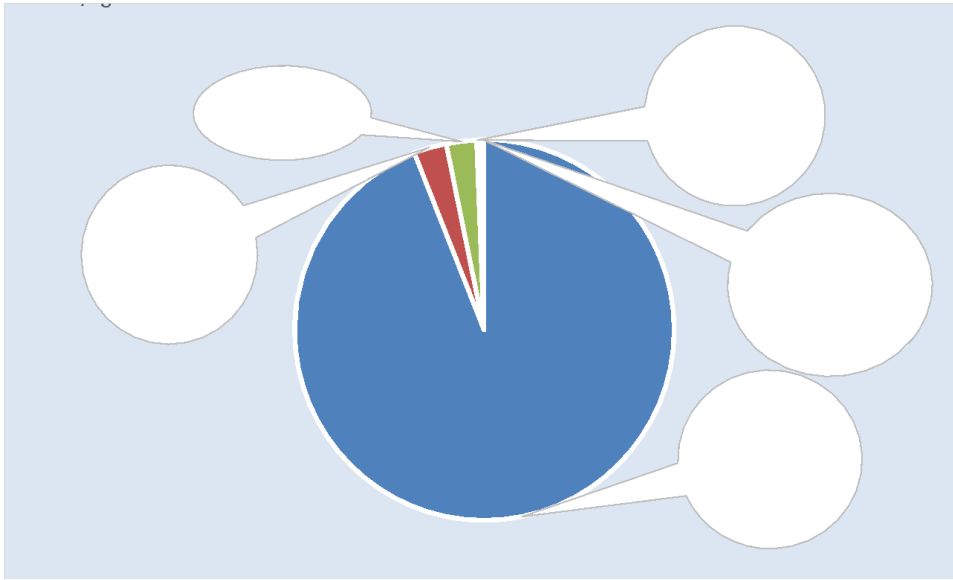
1. Text only refers to no drawing, piece is stylized design or text only  
 2. Stencils are made with cut-outs & medium  
 3. Splash/ Slash is an undefined graffiti piece, or paint thrown onto property  
 4. Stickers were not recorded in 2017 or 2019

Like the finding above, the predominant category of graffiti (94%) was what is termed as “marker” or “plain” in nature, as compared to outline bubble-type graffiti or artistic drawings. This trend has been observed in previous graffiti audits in Edmonton. Marker / plain graffiti tagging is textual in nature rather than being a picture or a drawing.

**Table 9 - Graffiti Categories**

Graffiti Category		2019	2017	2016
	Tags	% of Total	% of Total	% of total
Marker / Plain Graffiti	2,263	94.0%	93.1%	93.7%
Outline Bubble Tag - No Fill	67	2.8%	4.3%	2.2%
Artistic Tag	62	2.6%	2.5%	3.1%
Outline Bubble Tag - Two Colors	5	0.2%	<1%	0.4%
Outline Bubble Tag - One Color	9	0.4%	<1%	0.3%
Etching	0	0.0%	0.0%	0.3%
Outline Bubble - Multiple Colors	2	0.1%	0.0%	0.1%
Total	2,408	100.0%	100%	100%

DRAFT

**Figure 5 - Observed Graffiti is Not Artistic**

### Target Properties & Categories

The audit team determined whether each item of graffiti was placed on City property, non-municipal government property or private property.

In 2019, 86% of graffiti vandalism tags were observed on private property, compared to 88% in 2017 and 89% in 2016. Of the total tags on private property 877 of them were on private waste and recycling bins in alleys and laneways (777 in 2017). This represents 42% of all tags observed on private property during the 2019 audit (45% in 2017). The proportion of tags on waste and recycling bins observed in 2019 is consistent with observations in previous graffiti audits.

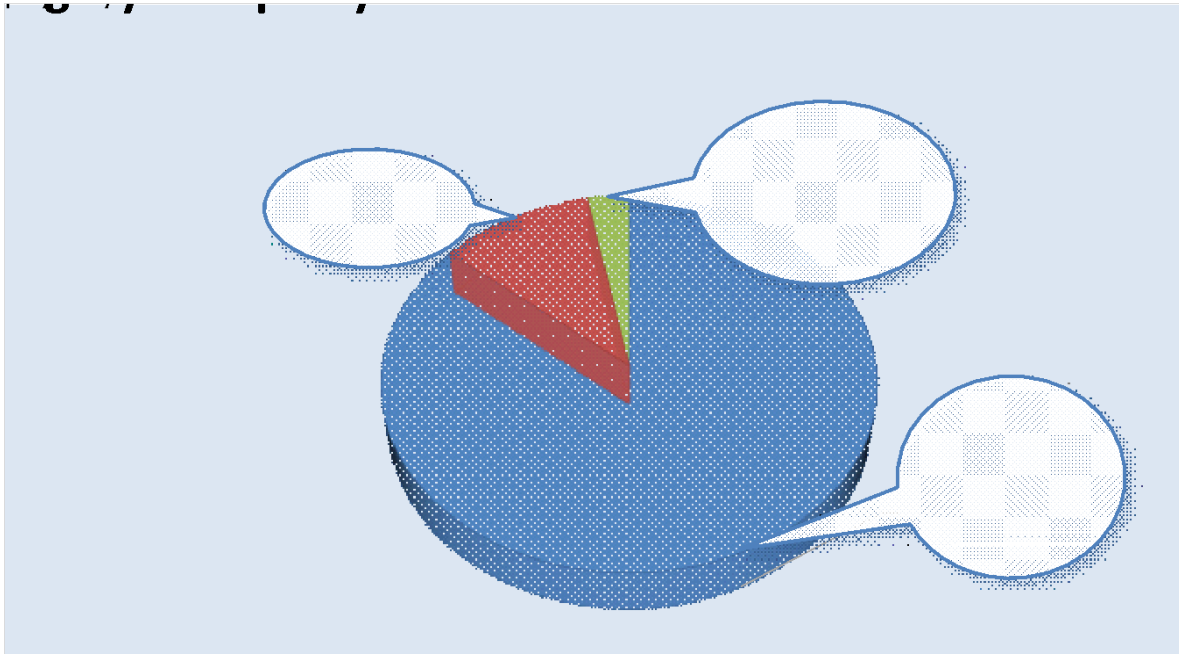
The number of tags on government (Federal) property continued to be small at just 3% of total graffiti tags at 76 tags (up from 67 in 2017). The consultant noted that, as in the past, most tags on federal government property were on Canada Post (grey) postal boxes.

The proportion of graffiti on City property, has risen slightly to 11% of all tags compared to 9% of all tags in 2017. Of these tags, 56% (116 tags) were observed on City garbage or recycling bins in alleys and laneways.



DRAFT

**Figure 6 - Graffiti Tags by Property Ownership**



Detailed data follows on Pages 29 – 31.

DRAFT

Table 10 - Graffiti Targets &amp; Category Results

2019 Target Items		
CITY	% of Total 2017	% of Total 2019
	9%	11%
Corporate property	<b>Target Item</b>	<b>Tags Observed 2019</b>
	Disposal Bin - Small	116
	Benches	15
	Fence	4
	Fire Hydrant	11
	Garbage Can	1
	Pillar	1
	Planter Box	1
	Recycling Bin	17
	Sign	17
	Sand Storage Box	17
	Barricades	6
	Pillar	1
	<b>Sub Total</b>	<b>207</b>
	ETS Benches	40
	Bus Shelter	15
	<b>Sub Total</b>	<b>55</b>
	<b>Total</b>	<b>262</b>
	<b>% of Total 2017</b>	<b>% of Total 2019</b>
GOVERNMENT	2%	3%
Canada Post	<b>Target Item</b>	<b>Tags Observed 2019</b>
	Postal boxes	76
	<b>Total</b>	<b>76</b>
PRIVATE	<b>% of Total 2017</b>	<b>% of Total 2019</b>
	88%	86%
Church	<b>Target Item</b>	<b>Tags Observed 2019</b>
	Barricades	22
	Walls	9
	Utility box	8
	Light Standard	2
	Shed	1
	Post	1
	Sign	1

DRAFT

PRIVATE		..... Continued	
Commercial			
Private Waste - GFL	Disposal Bin - Small		270
Private Waste - WMI	Disposal Bin - Small		212
Private Waste - Super Save	Disposal Bin - Small		118
Private Waste - Triline	Disposal Bin - Small		97
Private Waste -Waste Connections	Disposal Bin - Small		88
Private Waste - Derrick Disposal	Recycling Bin - Small		28
Private Waste - 310 Dump	Disposal Bin - Small		25
Private Waste - Local Waste	Disposal Bin - Small		14
Private Waste - Canada Waste	Disposal Bin - Small		12
Private Waste - City Disposal	Disposal Bin - Small		7
Private - General scrap	Disposal Bin - Small		3
Private Waste - 432 Yuk	Disposal Bin - Large		3
Other commercial	Newspaper box		100
	Walls		64
	Signs		35
	Barricades		27
	Utility Box		19
	Benches		11
	Sea can		10
	Utility Box/ Cable Box		8
	Fence		5
	Ventilation Unit		4
	Door		3
	Light Standard		3
	Railing		3
	Sand Storage Bin		2
	Private Disposal bin		2
	Loading Dock		1
	Equipment		1
	EPCOR	Light Standard	73
		Utility box	163
		Meter	2
		Power Pole	104
Multi Family Dwelling	Shed		15
	Wall		14
	Garbage Enclosure		4
	Window		3
	Fence		2
	Sign		1
	Barricades		1
	Light Standard		1
	Landscape Feature		1

DRAFT

<b>Residence</b>	Garage Door	19
	Fence	12
	Wall	8
	Garbage Enclosure	7
	Barricades	4
	Sign	3
	Garage Wall	2
	Shed	2
	Garbage Can	1
<b>Retail</b>	Wall	214
	Door	34
	Sign	24
	Window	22
	Barricades	20
	Sea Can	11
	Gate	10
	Fence	9
	Garbage Enclosure	9
	Railing	8
	Garage Door	7
	Half Pipe	6
	Planter	6
	Utility Box	6
	Garbage Can	4
	Grease bin	4
	Ventilation Unit	3
	Mailbox	2
	Pipe	2
	Stairs	2
	Equipment	1
	Gas pipe	1
	Post	1
	Shed	1
<b>Telus</b>	Utility Box	4
<b>All Target Items</b>		<b>Tags Observed 2019</b>
	<b>Grand Total</b>	<b>2,408</b>

DRAFT

## Location Intensity Rating (LIR)

Location Intensity Rating (LIR) is calculated as a method to indicate the relative intensity of graffiti at a location within a neighbourhood. The LIR differs from the graffiti index in that the graffiti index measures the intensity of the amount of graffiti in the entire neighbourhood or hot/random area. The LIR measures the intensity of the graffiti observed at each individual location. It also includes factors other than just the amount of graffiti. The factors that form the LIR are described below.

The LIR is a rating of each “location” and it is based upon:

### Size

- Score 1 for extra small, score 5 for extra large

### Colour

- Score 1 for low colour, score 5 for vibrant colour

### Complexity

- Score 1 marker plain text, score 5 for Outline Bubble multiple colours

### Artistic

- Score 1 not drawn / splash / slash, score 5 artistic execution

### Visibility

- Score 1 barely noticeable, score 5 could not miss it

### Longevity

- Score 1 old, faded, nearly not visible, score 5 recent, not removed

### Access

- Score 1 easy access, no likelihood of being caught, score 5 dangerous location

### Surface

- Score 1 bad surface, does not take paint easily, score 5 ideal graffiti surfaces

### Reoccurrence

- Score 1 none apparent, score 5 heavy reoccurrences

The maximum LIR possible at any location is a score of 45 (9 factors x 5 points = 45)

**Table 11 - Location Intensity Index - Top 50 Sites**

The top 50 Location Intensity Ratings listed below (full list Appendix J):

Order of Entry No	Neighbourhood	Latitude	Longitude	Intensity Rating	Street No.	Street Name	Nearest Intersection
7226	Strathcona	N53.51875	W113.49841	45	82204	104 St	83 Ave
7098	Strathcona	N53.51855	W113.50010	42	8206	106 St	82 Ave
7162	Strathcona	N53.51858	W113.49949	40	10450	82 Ave	105 St
6541	Queen Alexandra	N53.51738	W113.49828	39	10411	82 Ave	104 St
6601	Queen Alexandra	N53.51738	W113.49828	39	10411	82 Ave	104 St
7299	Strathcona	N53.52082	W113.49608	39	10307	85 Ave	Gateway Blvd
6968	Strathcona	N53.51888	W113.50481	37	10604	82 Ave	106 St
6870	King Edward Park	N53.51322	W113.43705	36	7105	77 Ave	71 St
8415	CPR West / Strathcona Junction	N53.51745	W113.49574	34	10308	81 Ave	Gateway Blvd
7515	Boyle Street	N53.54533	W113.47961	33	9516	102 Ave	95 St
8601	King Edward Park	N53.51756	W113.46529	33	8927	82 Ave	89 St
8218	McCauley	N63.55124	W113.48988	32	10665	98 St	107 Ave
7530	Boyle Street	N53.54704	W113.48434	31	10334	96 St	103A Ave
7908	Downtown	N53.54400	W113.50236	31	10509	103 Ave	106 St
6877	King Edward Park	N53.51273	W113.43803	31	7104	76 Ave	71 St
6280	CPR West / Strathcona Junction	N53.51749	W113.49613	30	10329	82 Ave	103 St
7601	Ritchie	N53.51181	W113.48681	30	9906	76 Ave	99 St
7878	Downtown	N53.54324	W113.50202	29	10215	106 St	102 Ave
8488	Strathcona	N53.52533	W113.48805	29	8925	100 St	90 Ave
7641	Downtown	N53.53927	W113.50067	28	10030	104 St	100 Ave
6511	Queen Alexandra	N53.51757	W113.49991	28	10479	82 Ave	105 St
7824	Downtown	N53.53979	W113.49640	27	10002	102 St	100 Ave
8576	King Edward Park	N53.51740	W113.46743	27	9145	82 Ave	93 St
8189	McCauley	N53.55243	W113.49020	27	10725	98 St	107 A Ave
7579	Calgary Trail North	N53.49466	W113.49502	26	5815	103A st	58 Ave
7679	Downtown	N53.54204	W113.49923	26	10165	104 St	102 Ave
8336	Oliver	N53.54103	W113.53000	26	12060	Jasper Ave	121 St
6935	Strathcona	N53.51860	W113.50613	26	10658	82 Ave	107 St
7705	Downtown	N53.54501	W113.49918	25	10341	104 St	104 Ave
7861	Downtown	N53.54155	W113.50188	25	10524	Jasper Ave	105 St
7394	Thornclyff	N53.51820	W113.62756	25	8415	177 St	84 Ave
6325	CPR West / Strathcona Junction	N53.51745	W113.49674	24	10343	82 Ave	104 St
7806	Downtown	N53.54169	W113.49150	24	10127	100 St	101a Ave
8103	Garneau	N53.51873	W113.50616	24	8208	107 At	82 Ave
6815	Garneau	N53.51952	W113.50804	24	10719	84 Ave	107 St
8208	McCauley	N53.55207	W113.49020	24	1074	97 St	107 Ave
8319	McCauley	N53.55165	W113.48820	24	10659	97 St	107A Ave
6438	Ritchie	N53.51755	W113.48983	24	10021	82 Ave	101 St
7364	Strathcona	N53.52004	W113.49589	24	10330	83 Ave	104 st
7572	Calgary Trail North	N53.49511	W113.49712	23	5723	104 St	57 Ave
7695	Downtown	N53.54492	W113.50007	23	10301	104 St	103 Ave
7765	Downtown	N53.54436	W113.49709	23	10231	103 Ave	103 St
8589	King Edward Park	N53.51755	W113.46683	23	8941	82 Ave	91 St
8265	McCauley	N53.54919	W113.49184	23	10006	105 A Ave	101 St
8382	Central McDougall	N53.54828	W113.50388	22	10624	105 Ave	106 St
7939	Downtown	N53.54129	W113.50673	22	10106	108 St	Jasper Ave
8537	King Edward Park	N53.51412	W113.44212	22	7727	75 St	78 Ave
8303	McCauley	N53.55371	W113.48991	22	10757	97 St	108 Ave
6417	Ritchie	N53.51755	W113.48935	22	10015	82 ave	100 St
8121	Alberta Avenue	N53.57050	W113.48035	21	9004	118 Ave	90 St

DRAFT

## Conclusions

The City of Edmonton's graffiti vandalism audit is an unbiased method of sampling graffiti vandalism in the City. Auditing neighbourhoods enables the City to document changes in the amount of graffiti observed in those areas that are re-audited.

Graffiti auditing for 2019 was conducted in 20 Edmonton neighbourhoods. In this audit the City requested that 7 previously audited neighbourhoods be dropped, and new ones replace them. The neighbourhoods not sampled in 2019 were: Beacon Heights, Beverly Heights, Belvedere, Eastwood, Inglewood, Killarney, and Parkdale. The new neighbourhoods were Bonnie Doon, Calgary Trail North/South, Delton, King Edward Park, Kirkness, Spruce Avenue and Thorncliff. These neighbourhoods represent those with the highest incidents of graffiti complaints from citizens.

During the 2019 graffiti audit, the audit crew observed graffiti vandalism at 426 locations where graffiti vandalism was present, an increase of 5% over the number of locations observed in 2017. In 2017 there were 405 locations. The number of locations where graffiti was observed in 2019 increased by 17% compared to 2016, and by 32% compared to 2015 (322 locations). Data shows a steady upward trend in the number of locations where graffiti is observed since 2015.

Correspondingly, in 2019 significantly more tags were observed than in 2017, 2016 or in 2015. In 2019 the audit documented 2,408 tags, compared to 1,947 in 2017 (a 24% increase); 1,575 tags in 2016 (a 52% increase) and 977 graffiti in 2015 (a 146% increase in tags observed when compared to 2015).

During the 2019 audit, the audit team traveled over 500 kilometres within Edmonton's 20 sample neighbourhoods, on streets, in alleys and in laneways recording graffiti observations. During this audit over 1,000 photographs were taken to record the graffiti observed. A comprehensive database was created to archive and analyse the data collected. Paper records, electronic data records and digital photographic records were archived to preserve the data gathered.

For the 2019 graffiti vandalism audit the consultant calculated a Location Intensity Rating (LIR) to examine the amount and intensity of graffiti at each of the 426 locations. For comparison purposes these intensities (LIR) of graffiti are plotted on neighbourhood maps in Appendix B showing graffiti locations and LIRs for 2019.

Consistent with observing a significant increase in graffiti tags in 2019 compared to the previous, the graffiti index also was observed to increase significantly in 2019, compared to previous audits since 2016.

Several neighbourhoods exhibited significant increase or decrease in graffiti activity when comparing the graffiti indexes of 2019 to 2017 and 2016. Strathcona is particularly noteworthy, as this neighbourhood has historically been one of the most tagged areas audited. In 2019 the combined index rose to 117% indicating significantly more tagging activity compared to 2017. Although Westmount exhibited a greater change in graffiti index, it was on a relatively small number of tags observed.

DRAFT

The number of identified (readable) tags observed in 2019 was 1,520 compared to 1,442 in 2017. The number of unidentifiable tags has also increased from 25% in 2017 to 37% in 2019. This change may be attributable in new unfamiliar tags being encountered, and with Edmonton staff not performing graffiti tag reading duties as often as in previous audit years.

Most graffiti tags are small covering less than 0.185 sq. m (2sq.ft.). In the 2019 audit the number of small tags increased from 1,597 in 2017 to 1,892 in 2019. The proportion of small tags remained similar with other audits at 78% of total tags in 2019 compared to 82% in 2017.

The graffiti observed in 2019 was recorded as predominantly “marker / plain” graffiti at 95.9 %; (96.7% in 2017, and 94.3% in 2016). This is graffiti that is textual or stylized in nature and is not artistic in its attempted design.

The consultant notes that the proportion of total graffiti on City assets (signs, ETS, park furniture etc.) has remained similar since 2016, ranging between 8% - 11% of total tags. Most of the tags on City property are on garbage and recycling bins in alleys and laneways (56% of City tags (excluding ETS property) were noted on these bins).

Commercial waste bins, parking lot barricades, signs and posts continue to be common targets for taggers. Private residential and multi-family residential properties are often additional targets of graffiti vandals, especially fences and garages in back alleys and laneways.



## Sample Neighbourhoods 2019



-  2019 Graffiti Locations  
  2016 Graffiti Locations  
  Hot Spot Survey Area  
  2017 Graffiti Locations  
  Random Survey Area



DRAFT

## APPENDIX B - Graffiti Observation Locations

### Alberta Avenue Neighbourhood





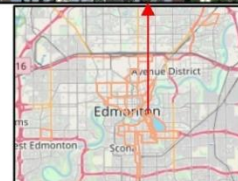
DRAFT

## Bonnie Doon Neighbourhood



2019 Intensity  
● 16 - 20

-  Neighbourhood Boundary
-  Hot Spot Survey Area
-  Random Survey Area





DRAFT

## Boyle Street Neighbourhood



2019 Intensity

16 - 20  
31 +

2017 Intensity

16 - 20  
21 - 25  
26 - 30

2016 Intensity

16 - 20  
21 - 25



Neighbourhood Boundary

Hot Spot Survey Area

Random Survey Area





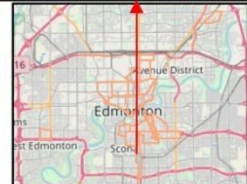
DRAFT

## Calgary Trail North Neighbourhood



2019 Intensity  
 ● 0 - 15  
 ● 16 - 20  
 ● 21 - 25  
 ● 26 - 30

Neighbourhood Boundary  
 Hot Spot Survey Area  
 Random Survey Area





DRAFT

## Central McDougall Neighbourhood



**2019 Intensity**  
 ● 16 - 20  
 ● 21 - 25

**2017 Intensity**  
 ● 16 - 20

**2016 Intensity**  
 ● 16 - 20

 **Neighbourhood Boundary**  
 **Hot Spot Survey Area**  
 **Random Survey Area**





DRAFT

## CPR West / Strathcona Junction Neighbourhood

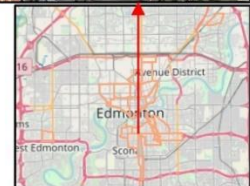


**2019 Intensity**  
 ● 16 - 20  
 ● 21 - 25  
 ● 26 - 30  
 ● 31 +

**2017 Intensity**  
 ● 16 - 20  
 ● 21 - 25  
 ● 26 - 30  
 ● 31 +

**2016 Intensity**  
 ● 16 - 20  
 ● 21 - 25  
 ● 26 - 30  
 ● 31 +

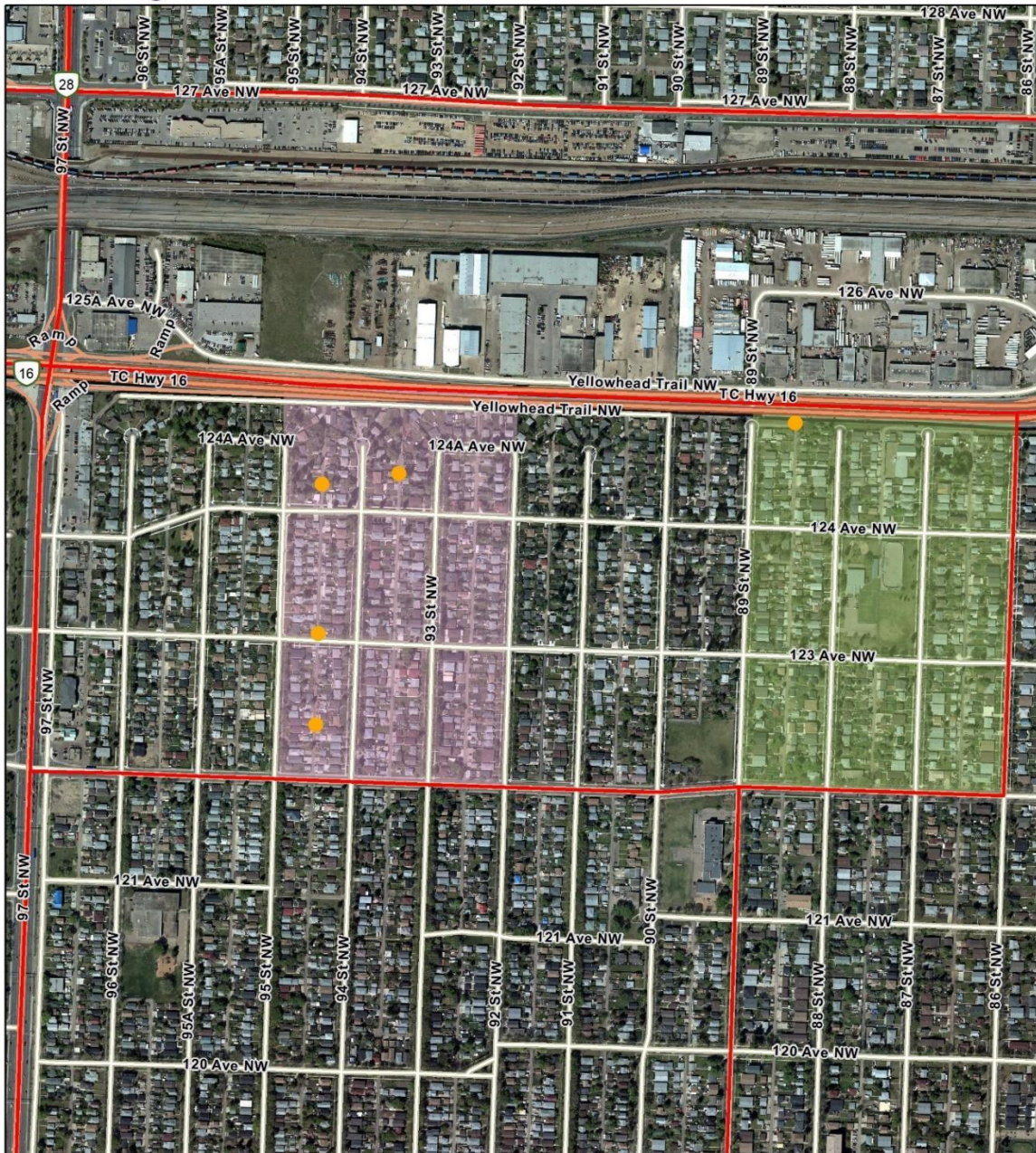
Neighbourhood Boundary  
 Hot Spot Survey Area  
 Random Survey Area





DRAFT

## Delton Neighbourhood



2019 Intensity  
16 - 20

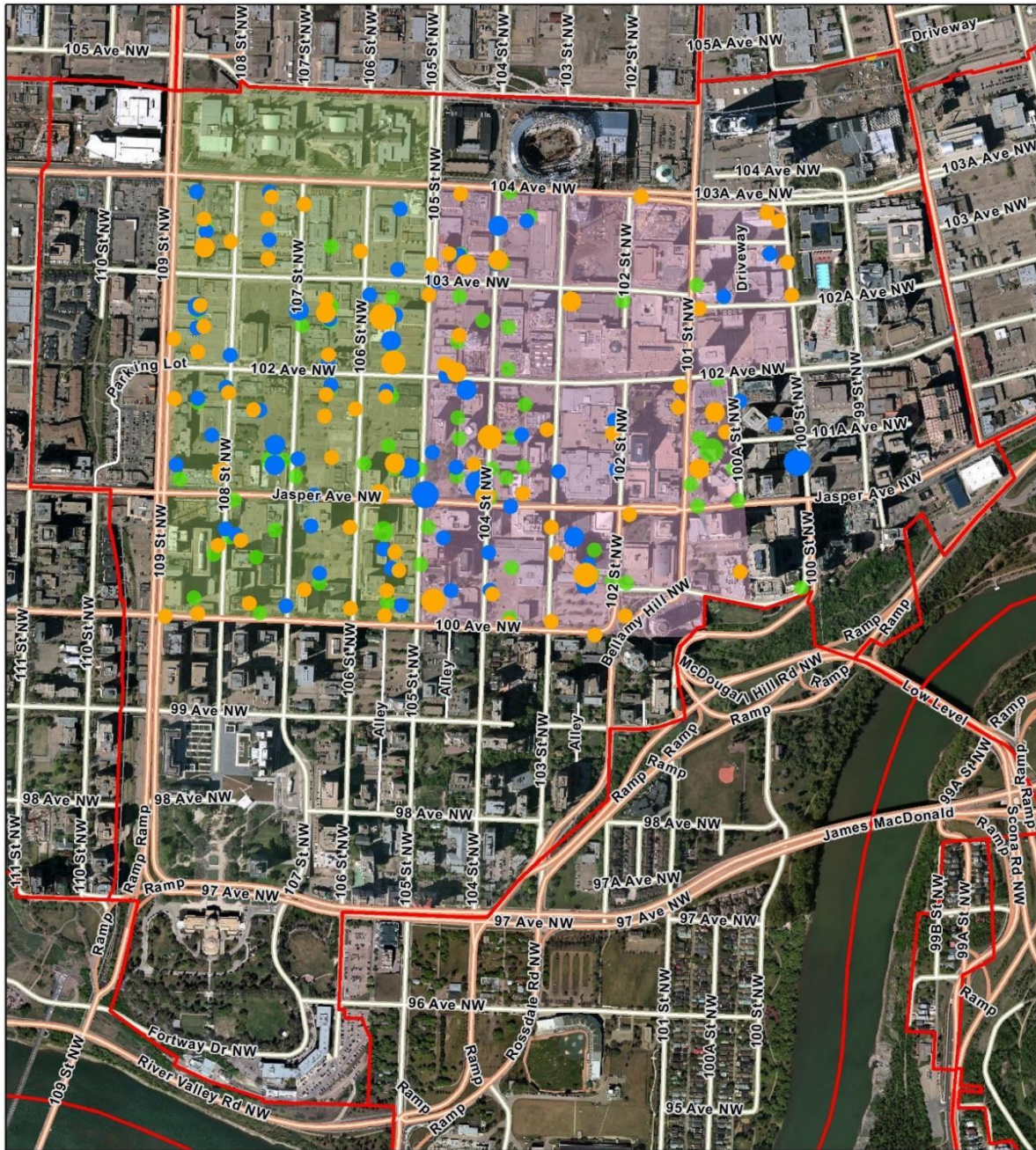
-  Neighbourhood Boundary
-  Hot Spot Survey Area
-  Random Survey Area





DRAFT

## Downtown Neighbourhood



**2019 Intensity**  
 ● 16 - 20  
 ● 21 - 25  
 ● 26 - 30  
 ● 31 +

**2017 Intensity**  
 ● 16 - 20  
 ● 21 - 25  
 ● 31 +

**2016 Intensity**  
 ● 16 - 20  
 ● 21 - 25  
 ● 26 - 30

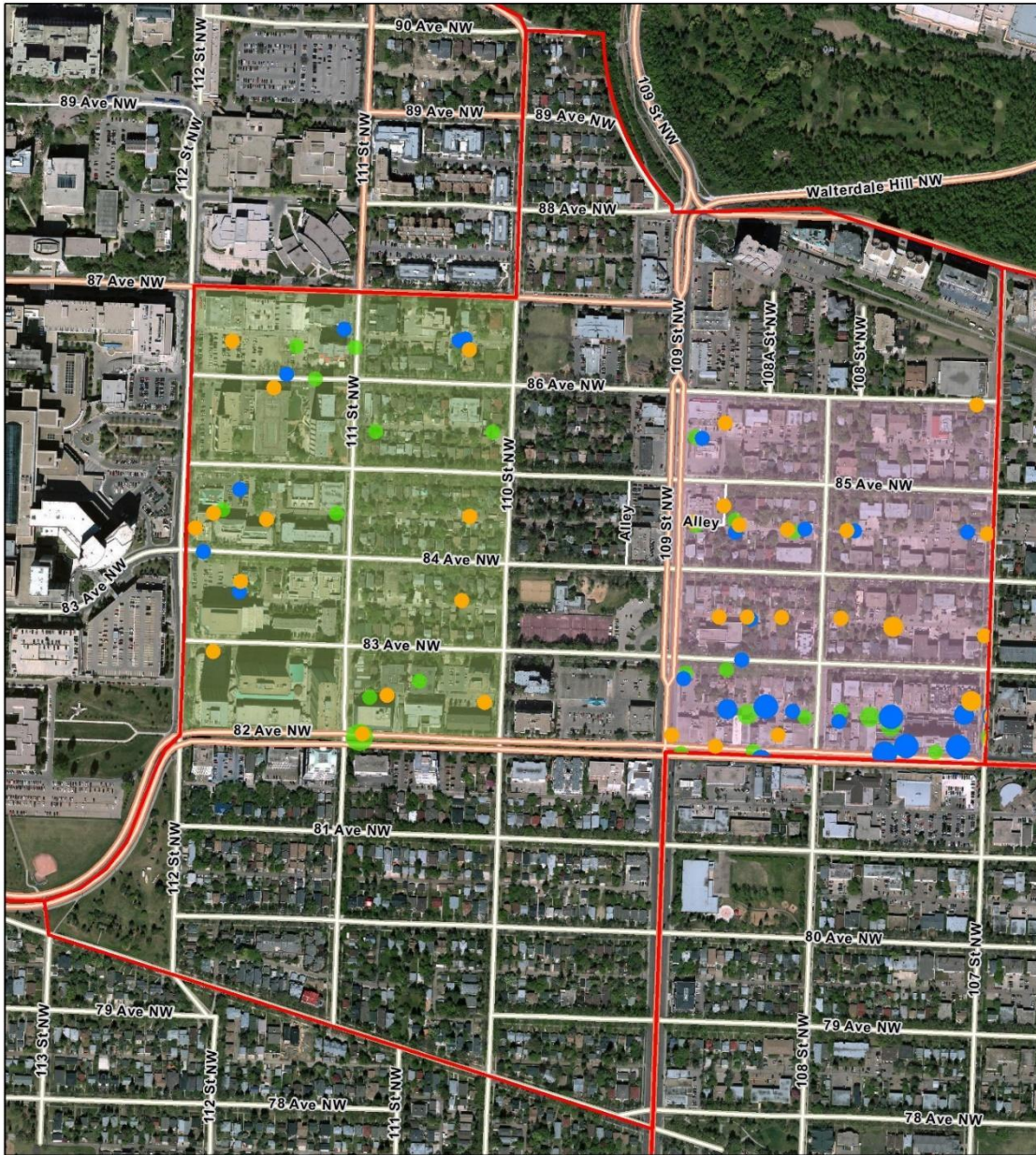
Neighbourhood Boundary  
 Hot Spot Survey Area  
 Random Survey Area





DRAFT

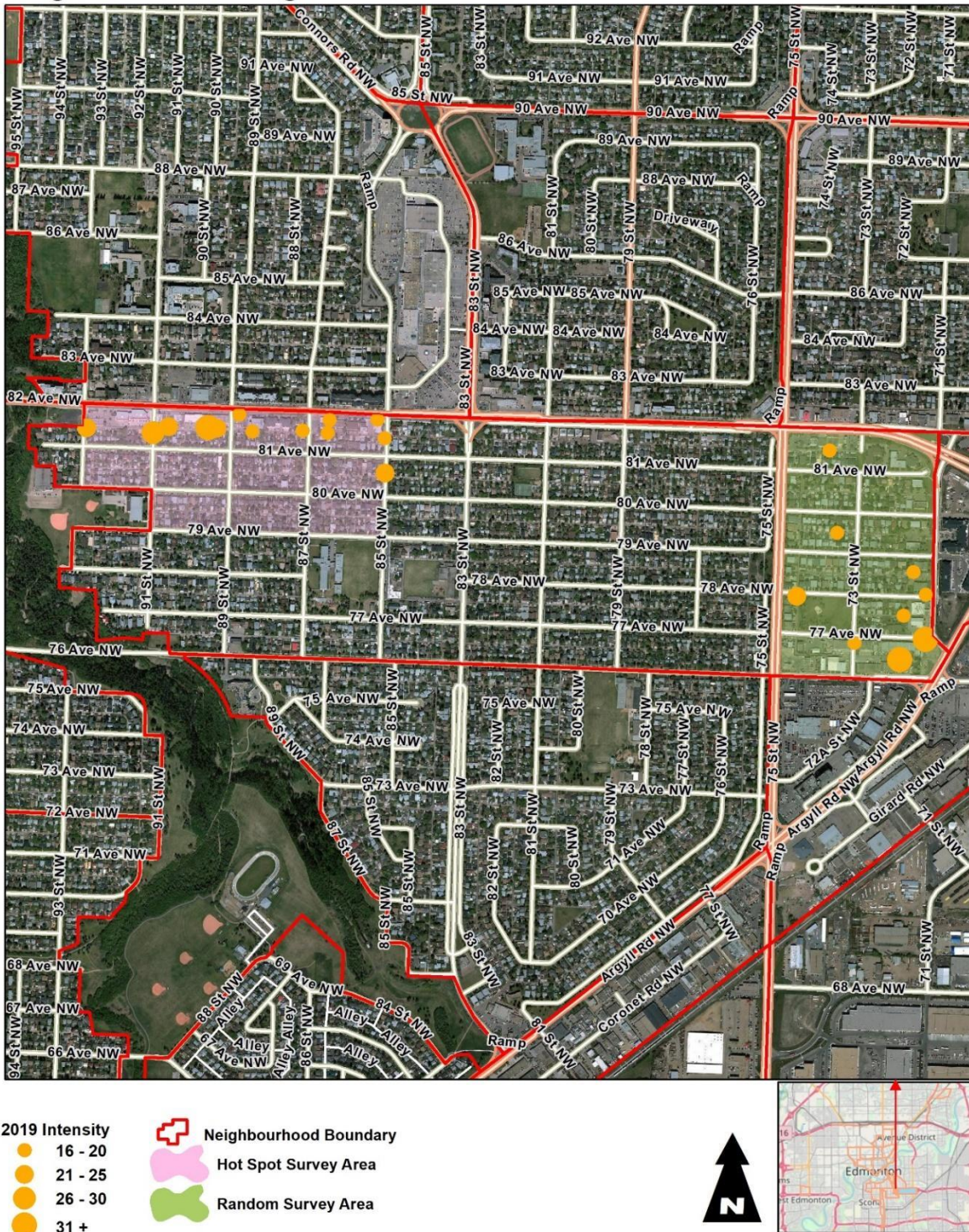
## Garneau Neighbourhood





DRAFT

## King Edward Park Neighbourhood





DRAFT

## Kirkness Neighbourhood



2019 Intensity  
16 - 20



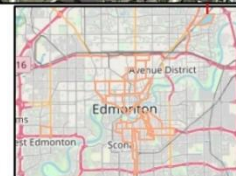
Neighbourhood Boundary



Hot Spot Survey Area



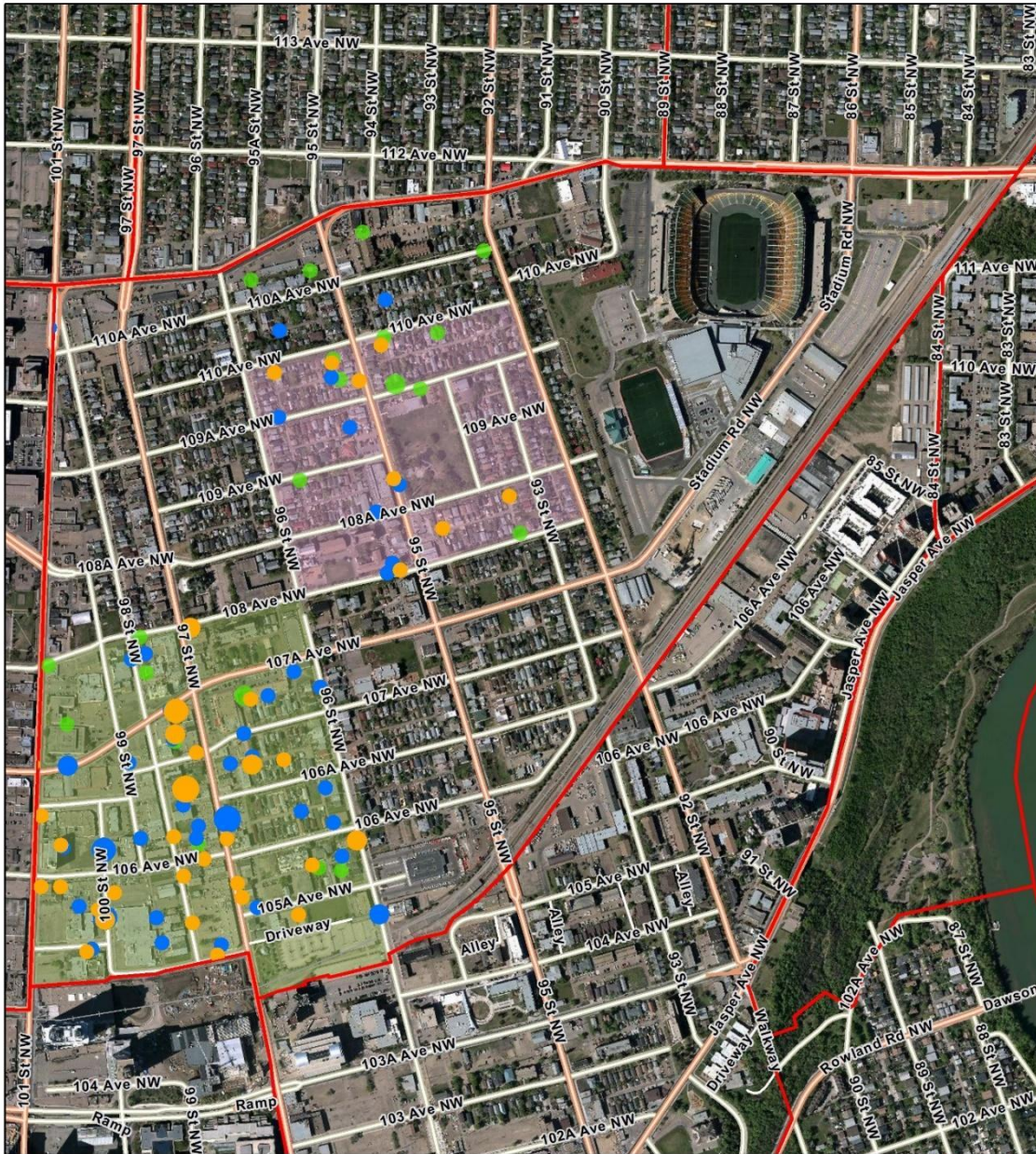
Random Survey Area





DRAFT

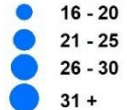
## McCauley Neighbourhood



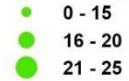
### 2019 Intensity



### 2017 Intensity



### 2016 Intensity



Neighbourhood Boundary

Hot Spot Survey Area

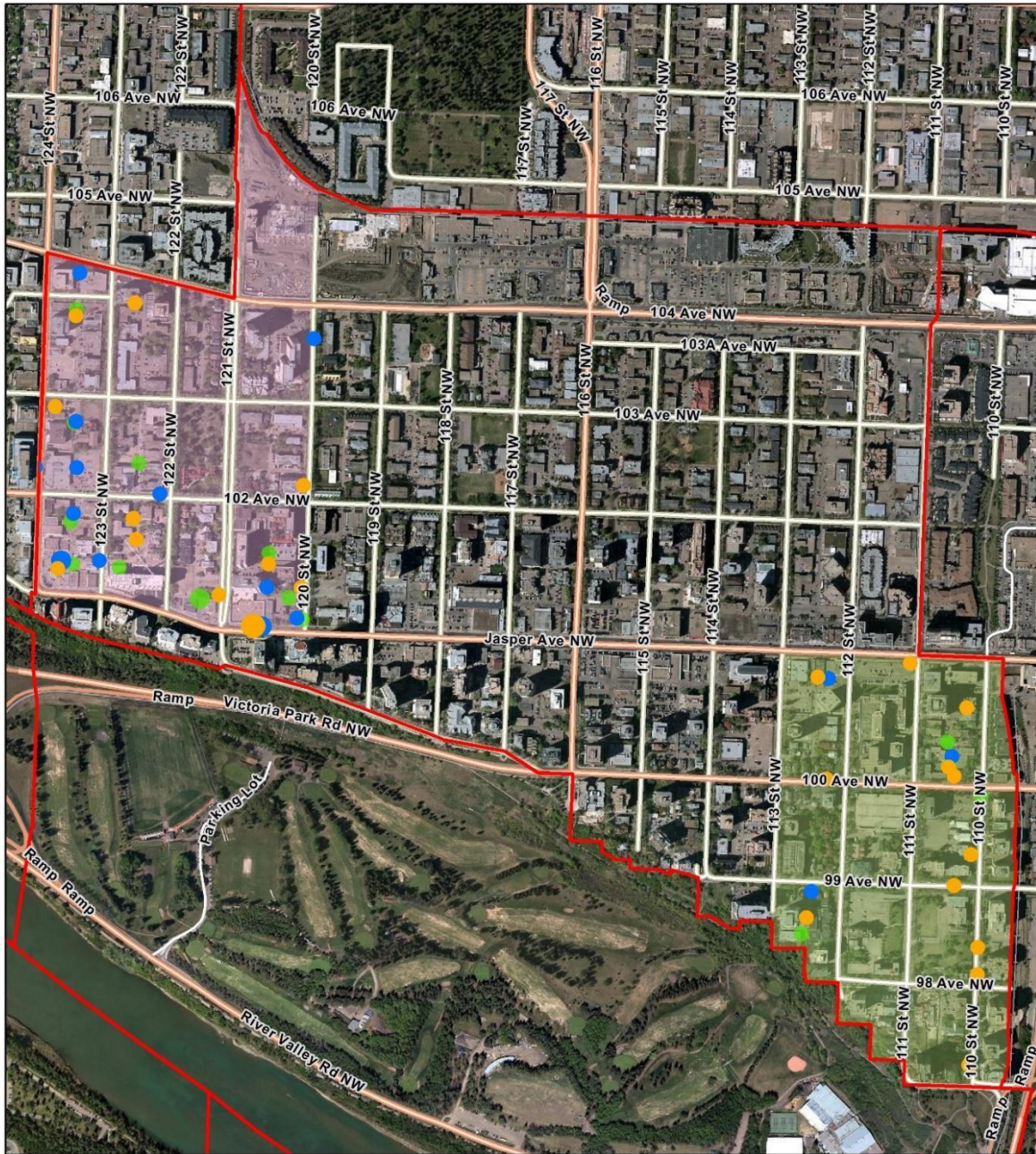
Random Survey Area





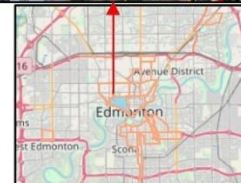
DRAFT

## Oliver Neighbourhood



2019 Intensity	2017 Intensity	2016 Intensity
● 16 - 20	● 16 - 20	● 16 - 20
● 26 - 30	● 21 - 25	● 21 - 25

-  Neighbourhood Boundary
-  Hot Spot Survey Area
-  Random Survey Area





DRAFT

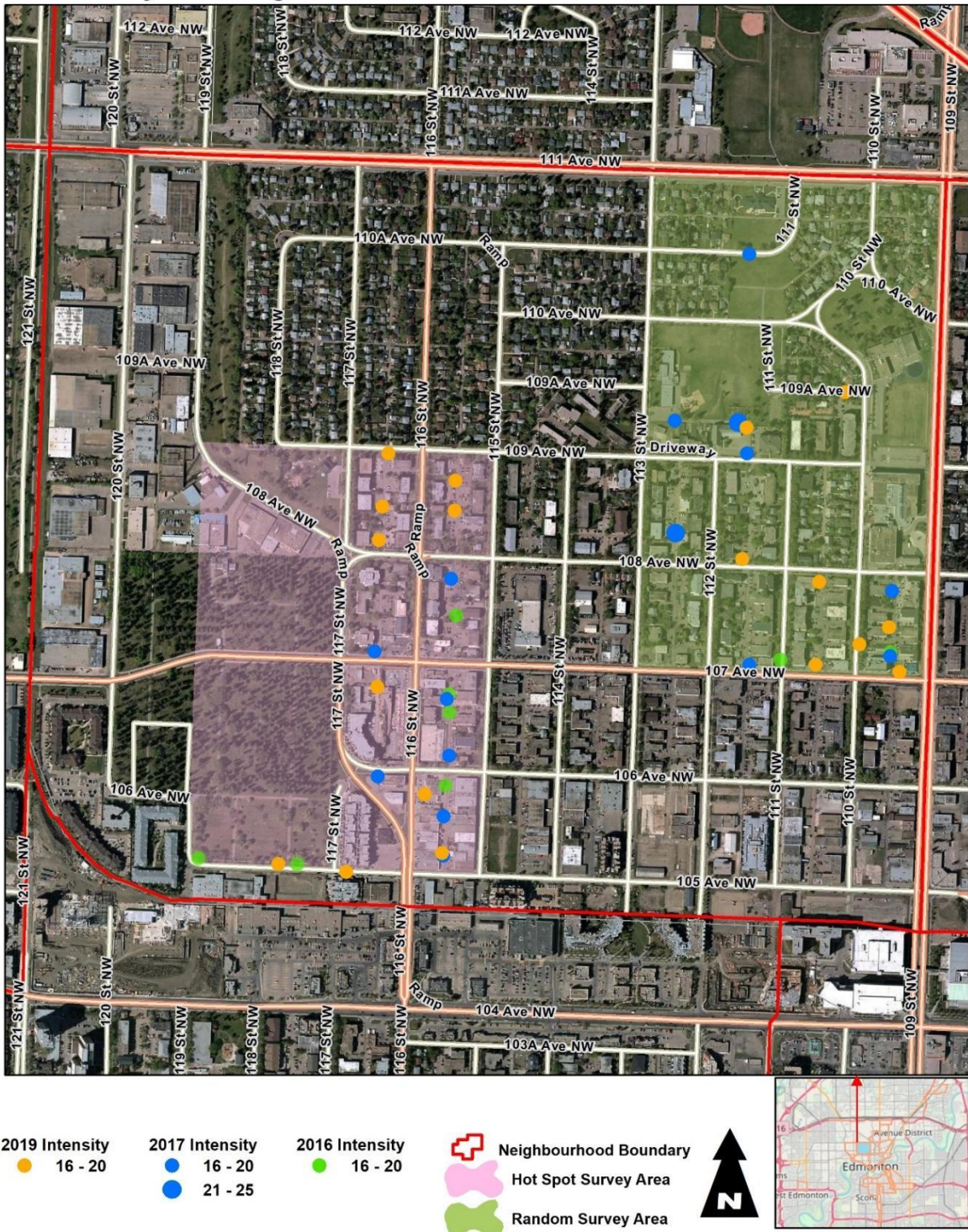
## Queen Alexandra Neighbourhood





DRAFT

## Queen Mary Park Neighbourhood





DRAFT

## Ritchie Neighbourhood



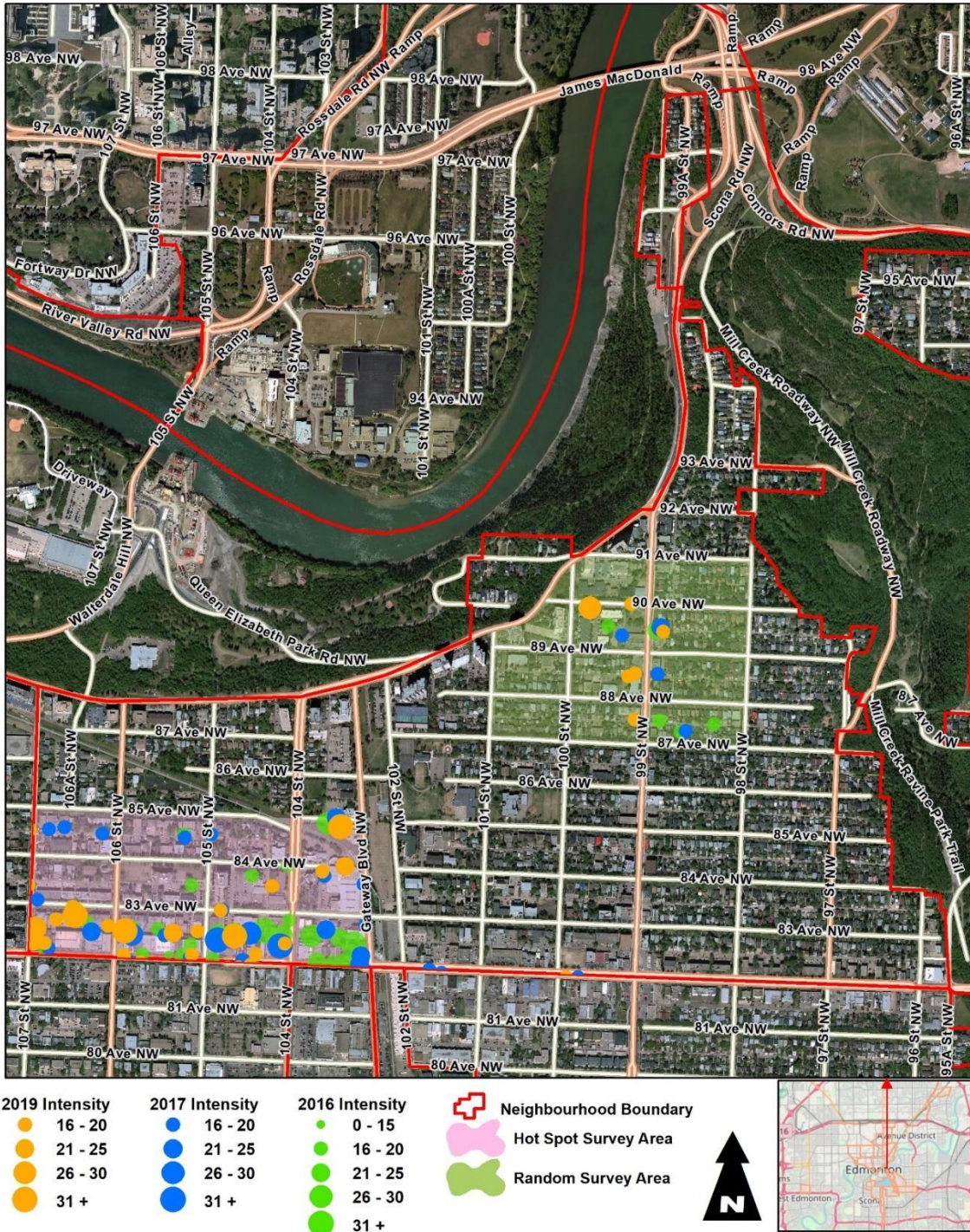






DRAFT

## Strathcona Neighbourhood





DRAFT

## Thorncliff Neighbourhood



2019 Intensity

- 16 - 20
- 21 - 25



Neighbourhood Boundary



Hot Spot Survey Area



Random Survey Area





## 56



DRAFT

Samples of commonly observed graffiti



Beez – Marker Plain Graffiti



Bubble Graffiti – No Fill



Sample of Stencil



Marker plain tag on bus shelter



Tag on Utility box



Large Multi-Colour Outline Bubble