

# Edmonton Waste Management Centre



The Edmonton Waste Management Centre (EWMC) is a unique collection of advanced waste processing and research facilities.

Owned and operated by the City of Edmonton Waste Management Services, the EWMC is an integral part of Edmonton's sustainable approach to waste management.

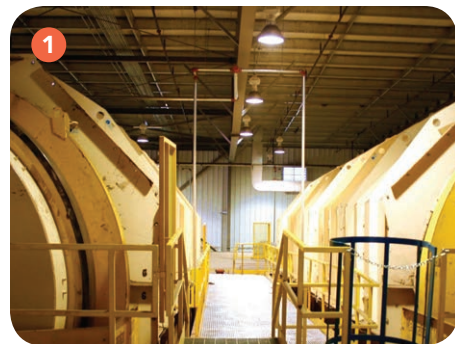
- The Centre is 233 hectares in size which is equivalent to more than five West Edmonton Malls.
- The combined area of all the buildings on site is 80,000 square metres, with the Edmonton Composting Facility itself occupying space equivalent to almost five football fields.
- On average, 4,500 trucks bearing 9,800 tonnes of material cross the scale every week.
- Over 17,000 students, teachers and adults tour the Centre each year.
- Total capital investment of all facilities and infrastructure is about \$450 million.

Many of the activities on site at the EWMC represent partnerships with private sector organizations.

Activities include:

- Composting
- Sorting mixed recyclables
- Producing biofuels from processed waste
- Manufacturing paper products from used paper and cotton fabric
- Sorting mixed construction and demolition waste
- Processing electronic and electrical waste
- Producing 4.8 megawatts of electricity annually from landfill gas

# Edmonton Waste Management Centre



## Integrated Processing & Transfer Facility

Prepares residential and commercial waste for composting, recycling, conversion to biofuels and transfer to landfill.



## Compost Curing/Biosolids Composting

Operating area for composting yard waste and biosolids and curing compost produced at the Edmonton Composting Facility.



## Residential Transfer Station

One-stop service area for residents to drop off waste, recyclables and household hazardous waste safely and conveniently.



## Sanitary Landfill (closed)

Engineered sanitary landfill operational from 1975 to 2010. Features systems for groundwater diversion, leachate collection, landfill gas recovery, and native revegetation.



## E-Waste Recycling Facility (GEEP)

Processes and recycles computer equipment, consumer electronic and electric products, as well as comparable material from businesses.



## Materials Recovery Facility (MRF)

Processes recyclables collected in Edmonton's recycling programs.



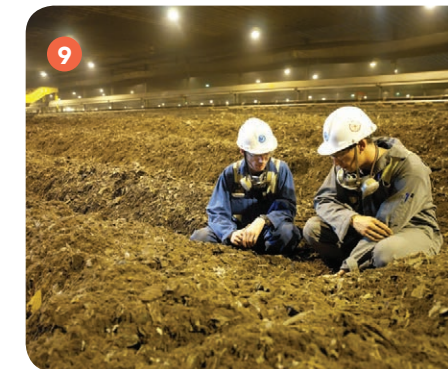
## Construction and Demolition Waste Recycling Facility

Processes mixed loads of wood, drywall, concrete/asphalt, metals, and asphalt shingles.



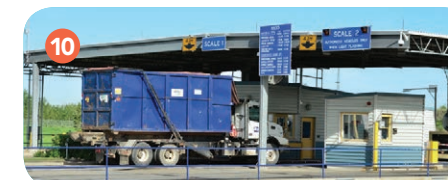
## Landfill Gas Recovery System

Captures and converts landfill gas to 4.8 megawatts of electricity, enough to power 4,600 homes annually.



## Composting Facility

The largest aerobic co-composting facility in North America. It converts municipal solid waste and sewage biosolids into compost.



## Weigh Scale Facility

Access point for EWMC facilities. All vehicles entering the site pass through this control facility.



## Advanced Energy Research Facility

Tests diverse waste feedstocks for gasification into syngas and for production of ethanol and methanol from the syngas.



## Paper/Textile Recycling Facility (Greys)

Manufactures used office paper and white cotton fabric into new paper products.



## Biofuels Facility (Enerkem)

Converts non-recyclable and non-compostable waste into methanol and then ethanol.

## Leachate Treatment Plant

Physically, biologically and chemically processes 12,000 litres per day of liquid extracted from the landfill.

## Research & Development Facility

Provides research and technology demonstration opportunities through the Edmonton Waste Management Centre of Excellence.

## Operations Facility

Daily site operations and maintenance are conducted from this facility.

## Equipment Maintenance & Storage Facility

Services heavy duty and specialty equipment used on site.

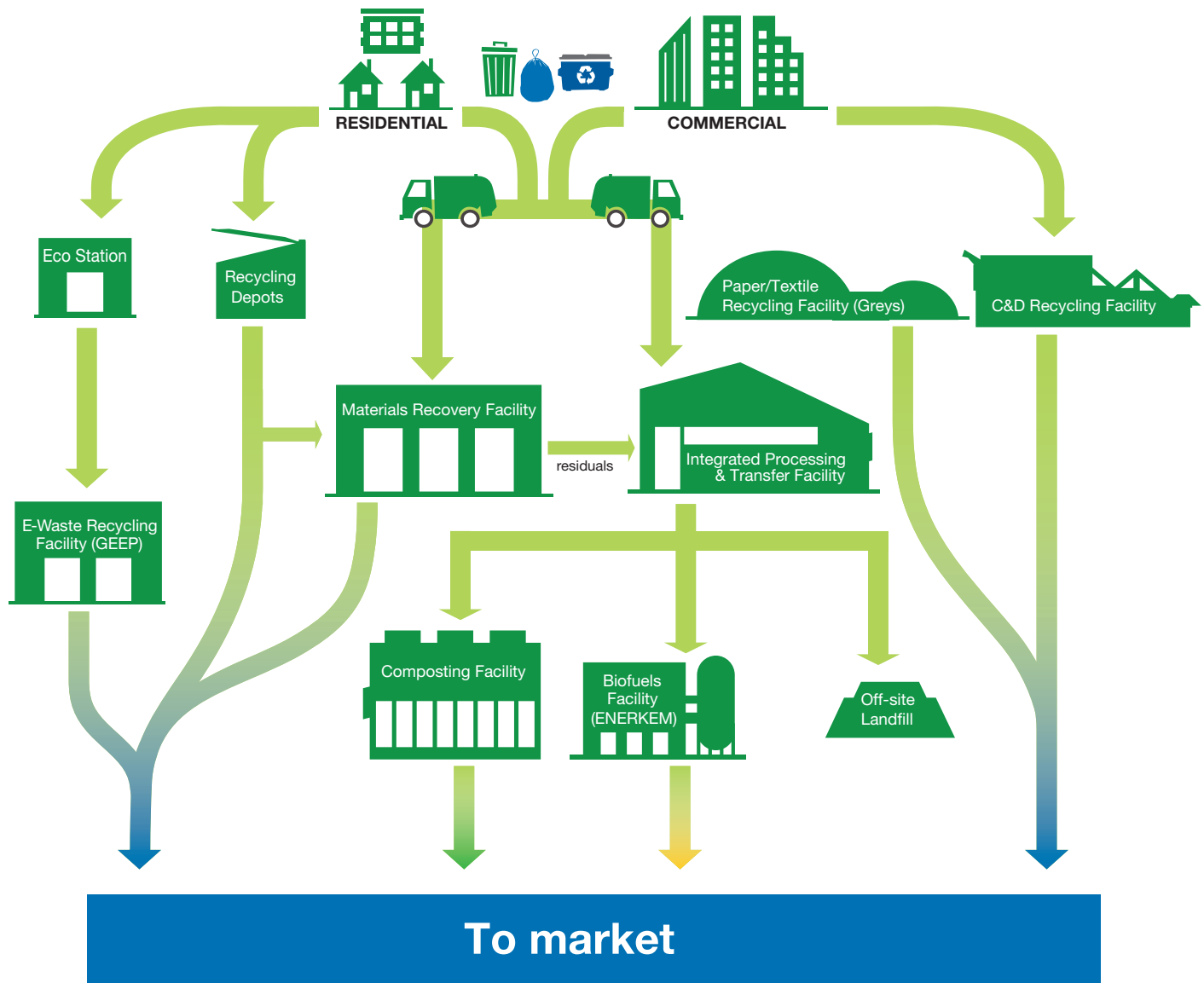
## Administration & Training Facility

Management of the EWMC is centered at this facility which also houses education and training areas.

## Biosolids Lagoons

Storage cells where sewage biosolids are stored for extraction and/or diverting.

# Edmonton's Waste Management Process



## Questions?

Call: 311

Email: [wasteman@edmonton.ca](mailto:wasteman@edmonton.ca)

Web: [edmonton.ca/waste](http://edmonton.ca/waste)

Address: 250 Aurum Road NE (Formerly  
13111 Meridian Street NE)

## Hours and Admission

Administration: Mon to Fri: 8:30 a.m. - 4:30 p.m.

Recycling and Waste Disposal Facilities:

Mon to Fri: 7:30 a.m. - 7:00 p.m.

Sat, Sun, and statutory holidays: 8:00 a.m. - 5:00 p.m.