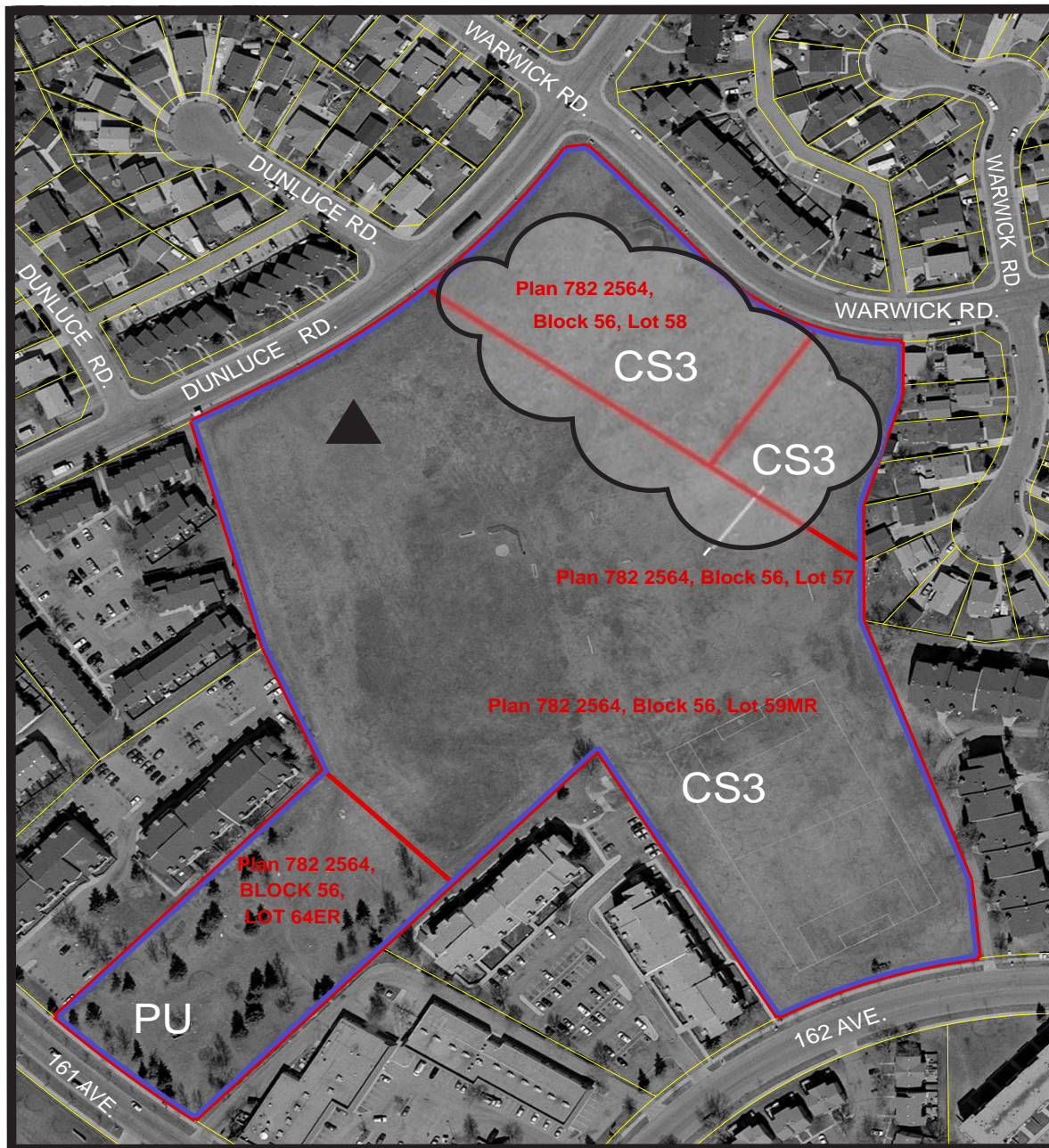


# School Site Declared Surplus by School

Dunluce





## Legend

**CS3** Approved Land Use Zoning

 Surplus School Site

 Legal Parcel Boundaries ( Red Text )

 Built School

 School and Community Park

 First Place Home Ownership Program Site

Note : This information is provided for reference purposes only.  
Precise location of surplus school building envelope within the  
vacant school site to be confirmed.

Created : December 2009

Data : City of Edmonton

Created by :

Asset Management and Public Works Department  
Corporate Properties Branch

The City of Edmonton disclaims any liability for the use of this map.  
No reproduction of this map, in whole or in part, is permitted without  
express written consent of the City of Edmonton  
Asset Management and Public Works Department

