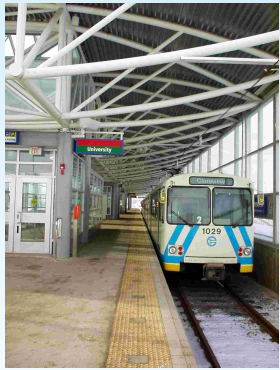


*Edmonton is changing how it will grow and redevelop. The goal of Smart Choices is to build vibrant communities and a sustainable future.*

*In March 2004, City Council approved the following Smart Choices initiatives:*

## Transit Oriented Development



How can we build communities that give residents more transportation choices? Edmonton currently has a high quality public transit system, including Light Rail Transit (LRT) and bus transit. Encouraging the construction of housing and business areas, close to key transit stations, will give residents and visitors

convenient transit access with less reliance on the use of a car to meet daily needs.

## Neighbourhood Reinvestment



How can we meet the needs of older neighbourhoods? Some of Edmonton's older neighbourhoods have had little investment in new housing and home

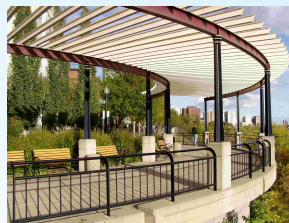
renovations over the years. In many of these same neighbourhoods public infrastructure (roads, sidewalks, etc.) is also deteriorating. Planning for reinvestment will occur for the neighbourhoods with the greatest needs.

## Residential Infill



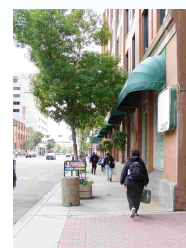
How can we provide more housing choices? The City will develop a strategy to encourage townhomes and low rise apartments in a way that is sensitive to the needs and functions of mature neighbourhoods. Areas will be identified where this kind of development can add to the vibrancy of a neighbourhood.

## Urban Design



Urban design can add to the quality of our communities. Urban Design Guidelines will be developed to shape the look, feel and function of new buildings and public spaces.

## Walkable City



How can we create a more walkable city? The City will look at areas where sidewalks or pathways are missing or deteriorated, and develop financing strategies to upgrade these areas. Making new communities walkable will also be considered.

## Commercial Redevelopment



How can deteriorated commercial areas be improved?

Some commercial and industrial areas along our major road corridors are run down. They are highly visible to visitors and affect

the character of adjacent neighbourhoods. Redeveloping these areas will bring back their vibrancy.

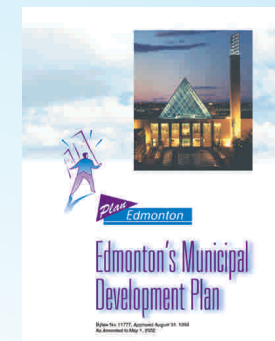
## Consultation and Education



How can we share knowledge about the planning process? A public Planning Academy program will teach the basics of the development process and present land

use planning knowledge. Everyone is welcome to participate.

## Planning for Growth



What does our future hold?

In the next few years, the Municipal Development Plan will be reviewed. How Edmonton could grow, the impacts of different patterns of development on City services and the construction of roads, sewers, and other infrastructure will be reviewed.

# SmartChoices

for developing our community

# SmartChoices

for developing our community

# SmartChoices

for developing our community

*For more information about the Smart Choices for Developing Our Community program visit the Smart Choices website at:*

[www.edmonton.ca/smartchoices](http://www.edmonton.ca/smartchoices)

Further contact information:

City of Edmonton  
Planning and Development Department  
5th Floor, 10250-101 Street  
Edmonton, AB  
T5J 3P4

Phone: (780) 496-6160

Fax: (780) 496-8450

Email: [smartchoices@edmonton.ca](mailto:smartchoices@edmonton.ca)

*Managing growth  
and preserving  
quality of life in  
Edmonton*



THE CITY OF  
**Edmonton**

THE CITY OF  
**Edmonton**