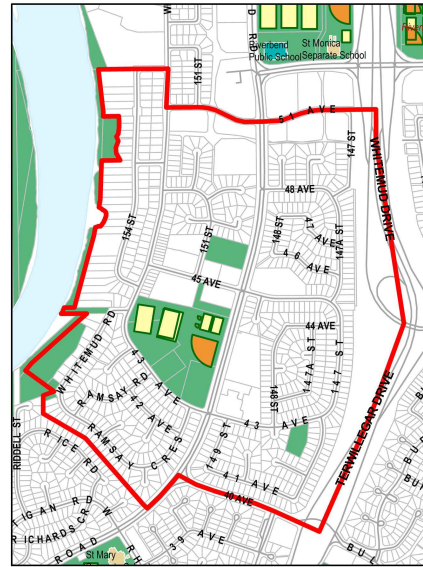
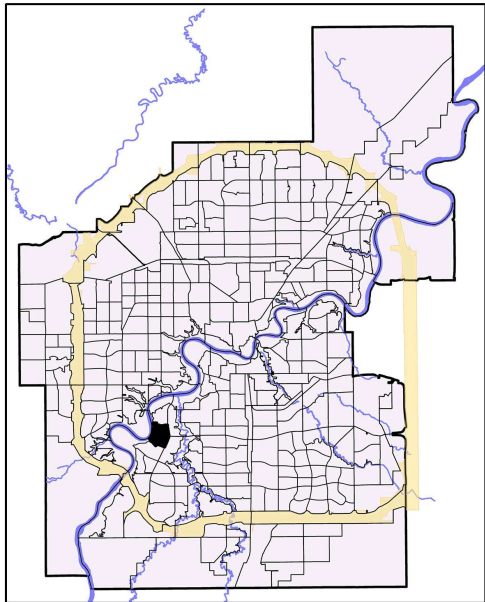


# RAMSAY HEIGHTS

## 2010 Neighbourhood Indicators



### How to Read Indicators

### Legend

## Indicators

Social Health and Wellness	NSA	City Avg
# Child Welfare Cases	1	10.62
# of Lone Parent Families	80	149.47
# of People Who Have Moved in Past Year	330	610.70
Hospital Emergency Room Visit	205.65	351.84
Hospitalization Rate	45.00	62.86

Personal and Community Safety	NSA	City Avg
# Incidents of Property Crime	75	153.24
# Incidents of Violent Crime	3	19.13
# Offenses Committed by Juveniles	4	16.91

Education	NSA	City Avg
% of Population 20+ with Less Than Grade 9	9.58	21.55
School Transiency Rate		0.29

Housing	NSA	City Avg
# Dwellings Needing Major Repairs	95	75.57
% Dwellings which are Rented	28.84	28.29
# Households Paying > Than 30% of Income on Shelter Costs	165	313.84

Economic/Employment	NSA	City Avg
# Households with Low Income	75	103.50
% Unemployed (25+)	1.72	2.69
# of Hamper Users	13	135.08
# SFI Recipients - (#)		86.80

Physical and Natural Environment	NSA	City Avg
Condition of Playgrounds	2.00	2.70
Condition of Sidewalks and Roadways	13.40	13.65

## Demographics

	NSA	City Avg
Population 2009	3,501	782,439
Median Household Income*	86,496	57,085
Average House Assessment 2010	480,343	360,723
Average Rent Cost*	834	761

### Note:

NSA - Neighbourhood Statistical Area

City Average (City Avg) is based on participating neighbourhoods used in the study.

Missing value indicates the absence of data available for the study.

\* Base on 2006 Census