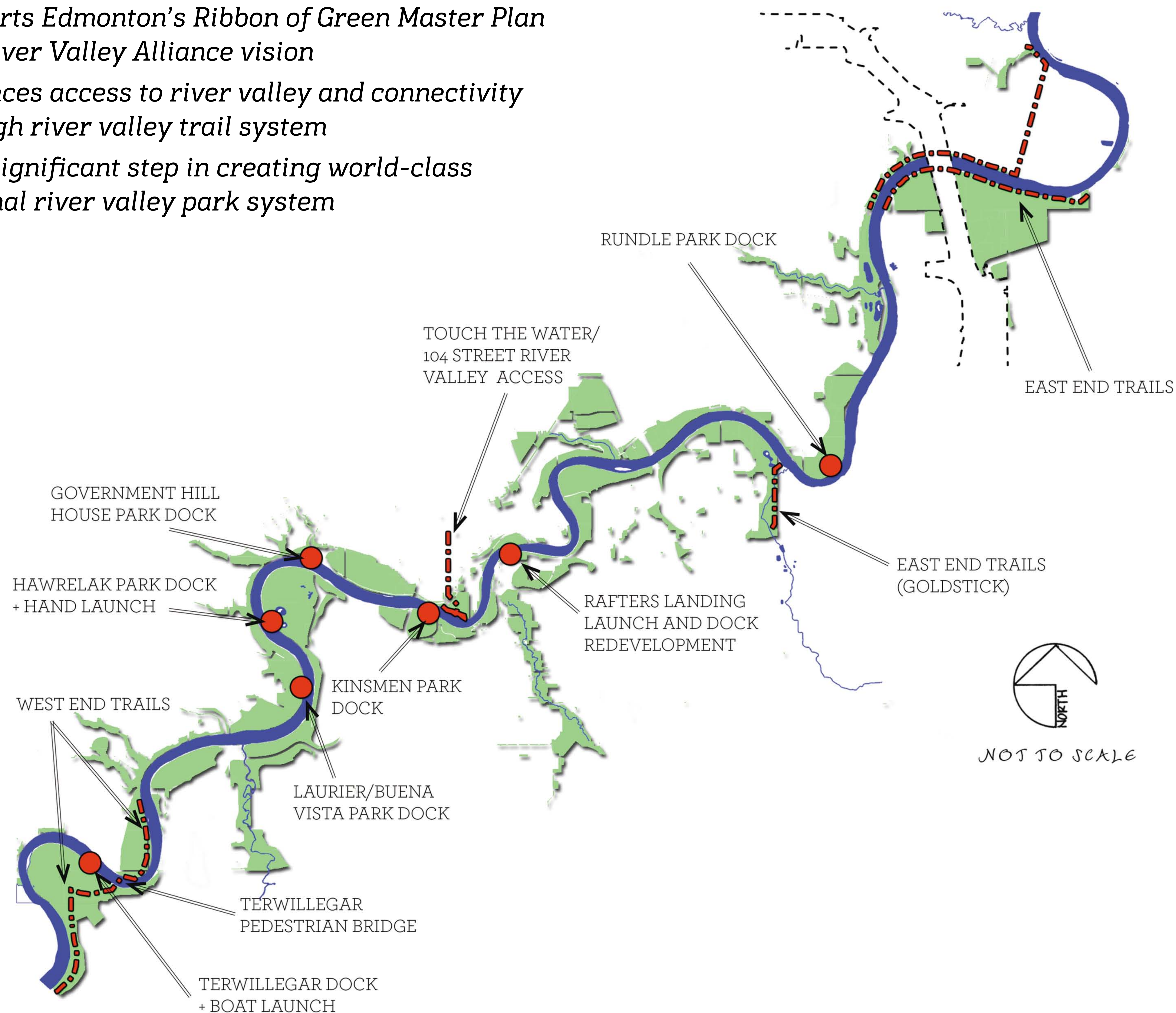


Edmonton's River Valley Connections

- Supports Edmonton's Ribbon of Green Master Plan and River Valley Alliance vision
- Enhances access to river valley and connectivity through river valley trail system
- Next significant step in creating world-class regional river valley park system

Twelve projects grouped into five initiatives in Edmonton:

- Terwillegar Park Footbridge
- West End Trails
- East End Trails
- Boat Docks and Launches
- 104 Street River Valley Access and Touch the Water Promenade



Funding

Total budget: \$72.9 M

- Funded through grants from the:
 - River Valley Alliance - \$24.3 M
 - Government of Alberta - \$22.6 M
 - Government of Canada - \$24.3 M
- City of Edmonton contribution: \$1.6 M
 - \$1.2 M from general finances
 - \$0.4 M from parkland reserve

Edmonton's River Valley Connections Initiatives

The five initiatives consist of 12 individual projects:

Terwillegar Park Footbridge

- A 280-metre long stressed ribbon concept footbridge to link Terwillegar Park to north river terrace (River Valley Oleskiw)

West End Trails

- 5.4 km of new paved and gravel trails along the river valley main spine trail in Terwillegar Park to link the Terwillegar Footbridge to the existing trail system north and south of the river

East End Trails (2 projects)

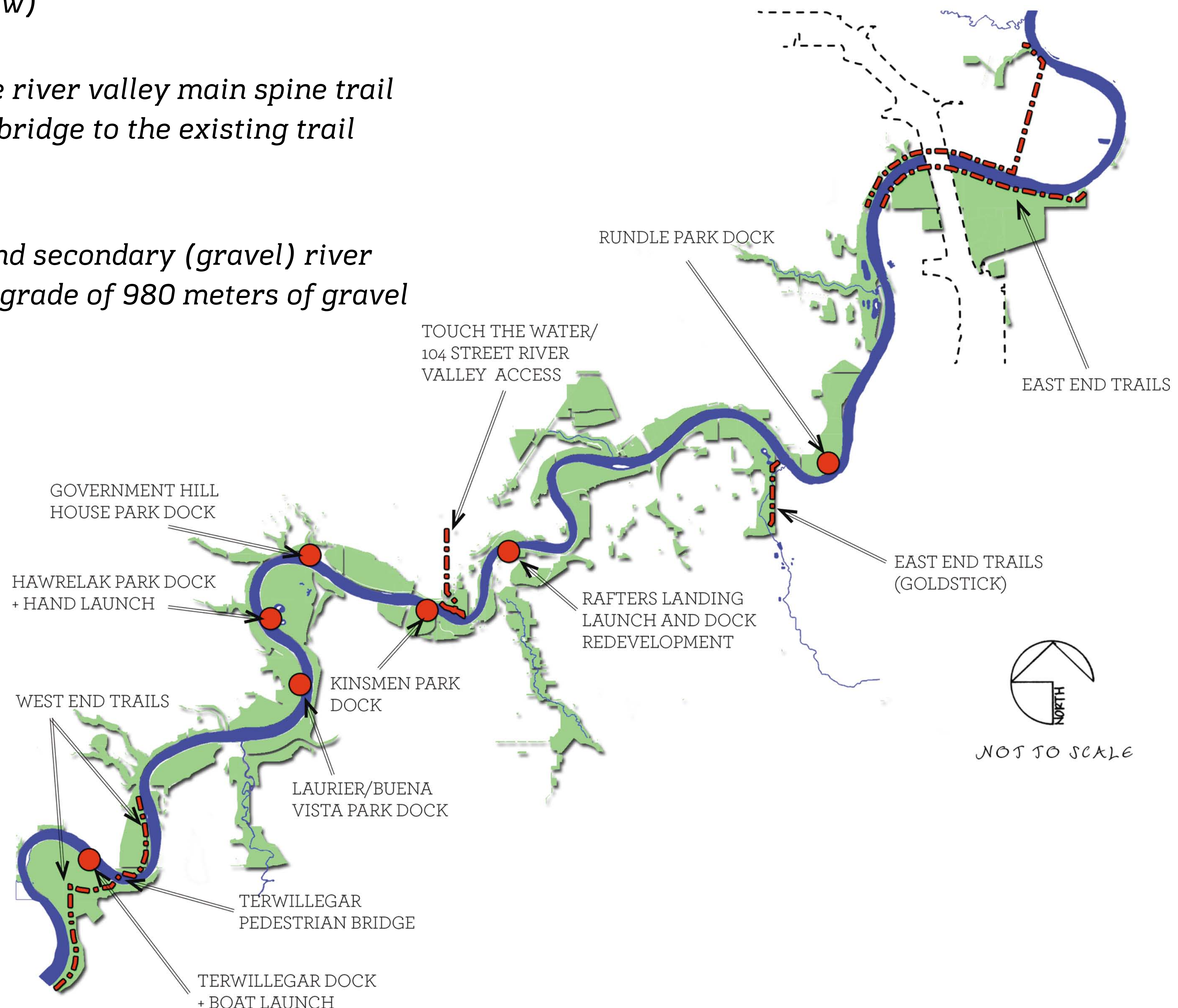
- 15 km of new and upgraded primary (paved) and secondary (gravel) river valley trails in east Edmonton, including the upgrade of 980 meters of gravel trails in Tiger Goldstick Park

Boat Launches and Docks (7 projects)

- Three boat launches and seven docks added for public use: Rundle Park, Rafters Landing, Government Hill House Park, Hawrelak Park, Kinsmen Park, Laurier/Buena Vista Park, Terwillegar Park

104 Street River Valley Access and Touch the Water Promenade

- Access from 104 Street/Jasper Avenue to the river valley in the Rosedale area and a promenade with amenities around the new Walterdale Bridge and areas adjacent to the EPCOR lands



Terwillegar Park

Park Vision & Concept Plan

Terwillegar Park Vision

“A Unique Natural Park within the City of Edmonton’s River Valley Park System.”

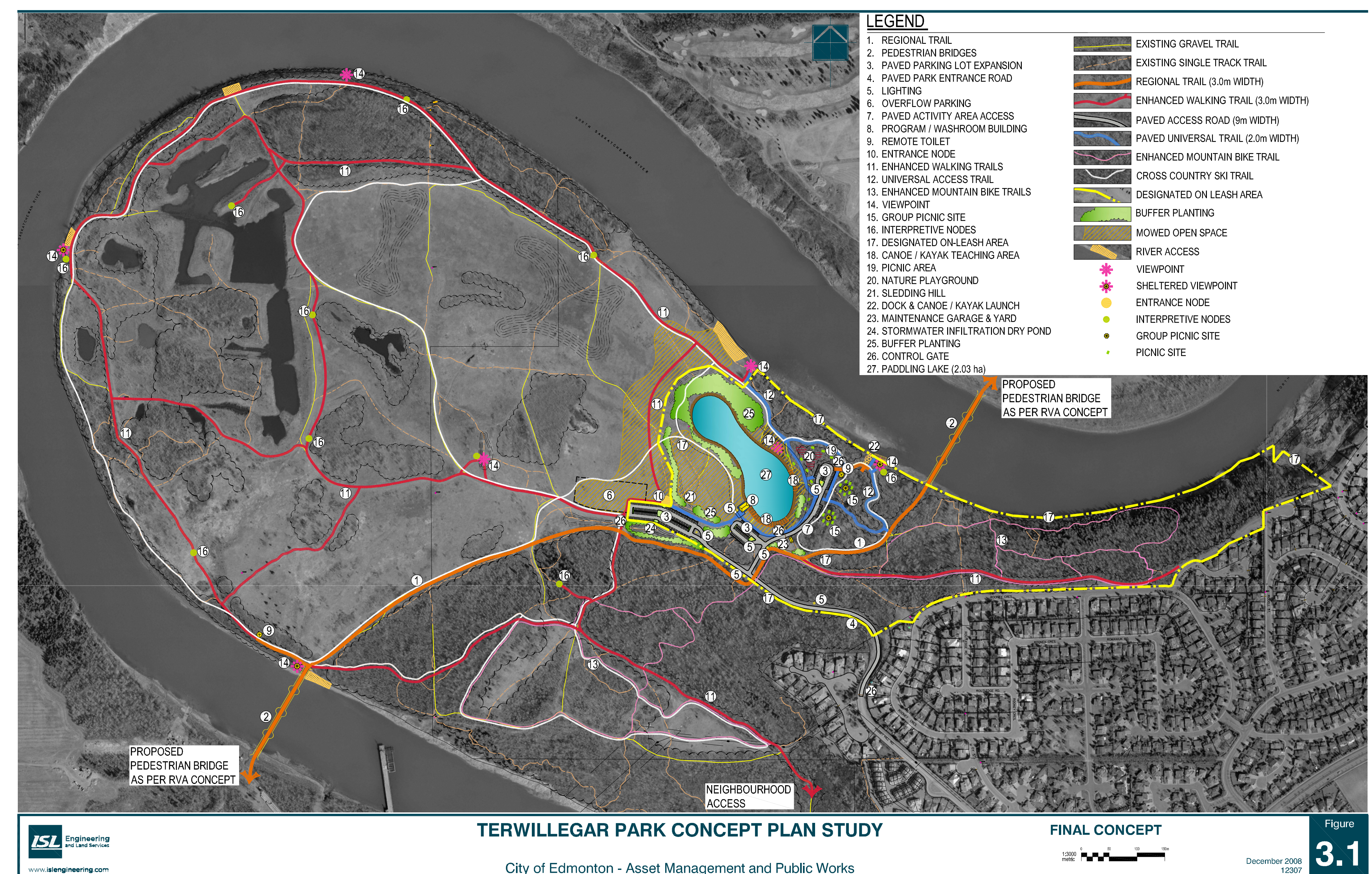
- *Approved by Council in 2005*
- *A Vision for Terwillegar Park document defines the vision, key values, preferred activities and required infrastructure to meet the needs of existing and future users while protecting and managing the natural resources of the park*

Terwillegar Park Concept Plan

- *Terwillegar Park Concept Planning Study took place from 2007 - 2009*

- *The Terwillegar Park Concept Plan:*

- *Builds on the Vision*
- *Was developed with significant public input*
- *Was approved by Council in January 2009*
- *Provides management objectives and development guidelines for a ten year period*
- *Provides direction to the Terwillegar Park Footbridge and segments of the West End Trails*



Terwillegar Park Footbridge



Project Timeline

- *Concept design—July 2013*
- *Preliminary design completion—December 2013*
- *Anticipated construction start—Summer 2014*
- *Construction completion—September 2016*

Overview

- *Based on Terwillegar Park Concept Plan (public input)*
- *\$20 Million budget*
- *280 metre long footbridge to link Terwillegar Park to north river terrace (River Valley Oleskiw)*
- *Stressed ribbon concept approved by Council on July 17, 2013*
- *Other options considered:*
 - *Cable-stayed*
 - *Arch*
 - *Truss*
 - *Suspension*
 - *Vehicle and multi-use trail*



Public Engagement



Previous Consultation

- *A Vision for Terwillegar Park (2005)*
 - *Public vision—a unique natural park*
- *Terwillegar Concept Plan Study (2007-2009)*
 - *Terwillegar Park Citizen Advisory Committee*
 - *Stakeholder workshops*
 - *Public open houses*

Current Consultation

Terwillegar Park Footbridge and West End Trails (2013-2014)

- *Public Open House #1 — Sept. 21, 2013*
 - *Presentation of bridge concept and trail*
 - *Project update*
 - *Input solicited on preferences for aesthetic elements*
- *Public Open House #2 — Spring 2014*
 - *Presentation of Final Design*
 - *Construction updates (schedules and detours, etc.)*
 - *Input solicited on preferences for aesthetic elements*