

Intent

To provide Edmontonians with a **unique river valley activity** that promotes health, safety and well-being in a **central location** that is easy to access by bike or vehicle.

To provide **diverse biking experiences** for a range of ages and skill levels by integrating a bike skills area with single track trails

To **consult** with the public and members of the biking community when designing the bike skills area

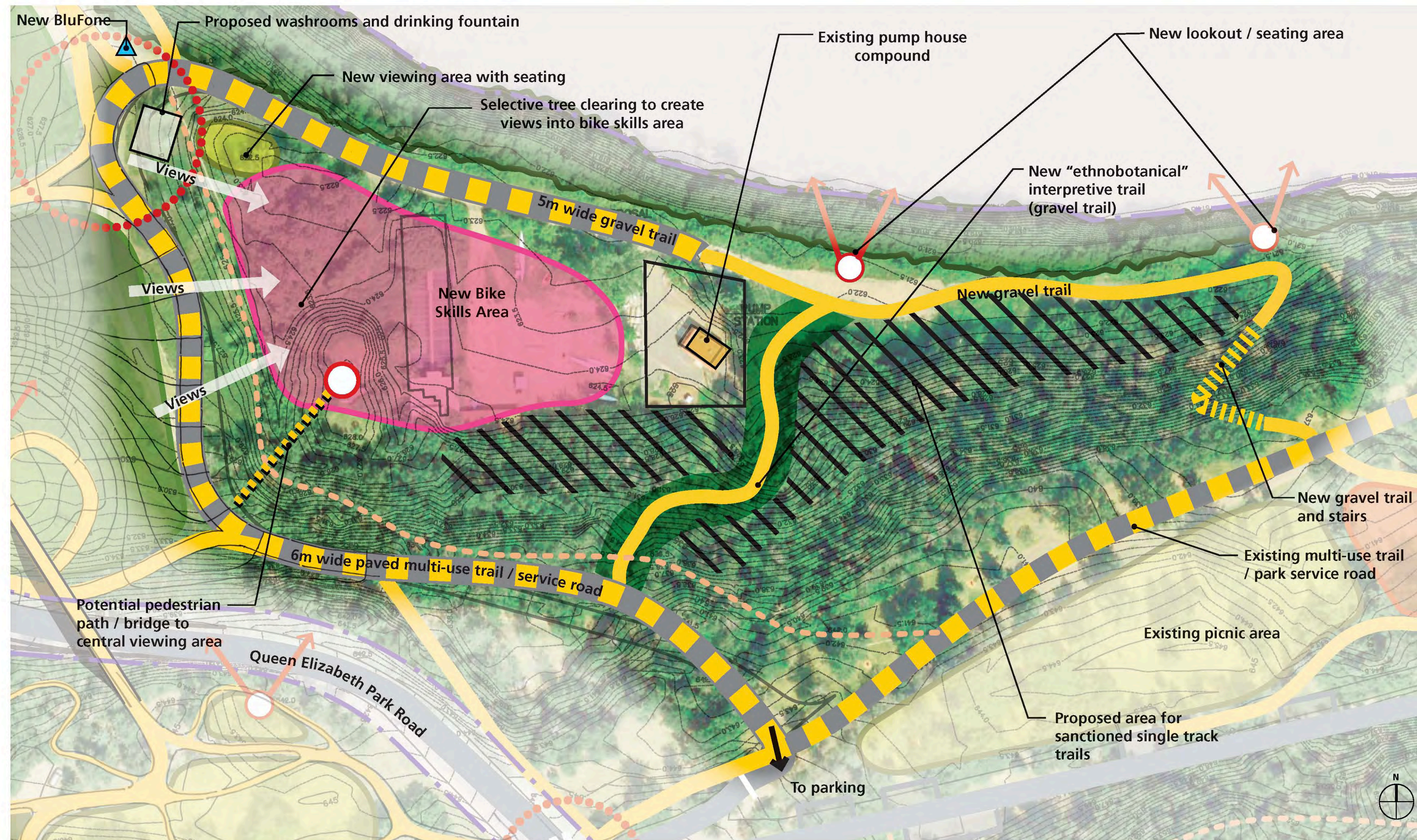
To explore partnerships with local riding organizations to help create an **inclusive and well-maintained facility**.

Public feedback

Build a new mountain bike skills area: 88% support in online survey; there was no clear preference for the bike park location.

Improve and/or expand single track trails throughout the park or in selected areas: Supported by 59% of online survey respondents.

Incorporating “ruins” from the old wastewater treatment plant: 45% support in online survey.



Proposed Bike Skills Area

The bike skills area be approximately 5000+ sq. meters (54,000 sq ft) and will incorporate a wide range of features that will appeal to all levels of riders.

“Ruins” of the old waste water treatment plant will be incorporated to create a unique and site-specific facility

The area will be close to the new washrooms and drinking fountain.

There is potential to form partnerships with local riding organizations to help with construction, maintenance and education. This can help foster an inclusive community and help ensure well-maintained facilities.



Proposed Sanctioned Single Track Trails

A network of sanctioned single track trails will be developed in the lower park.

Trails will be designed, built and maintained to best-practice standards to ensure trails are durable, do not cause erosion, and support a range of skill levels.

Maps and signs will identify trails, promote safe use, and encourage trail etiquette.



Integrated Bike Skills Area

Queen Elizabeth Park Master Plan

November 2012

SPACE@PLACE

THE CITY OF
Edmonton

Intent

To maximize opportunities for **year-round activities** in all areas of the park

To provide **comfortable** places to gather outdoors in winter

To capitalize on the new mound to create one of the best **tobogganing** hills in Edmonton

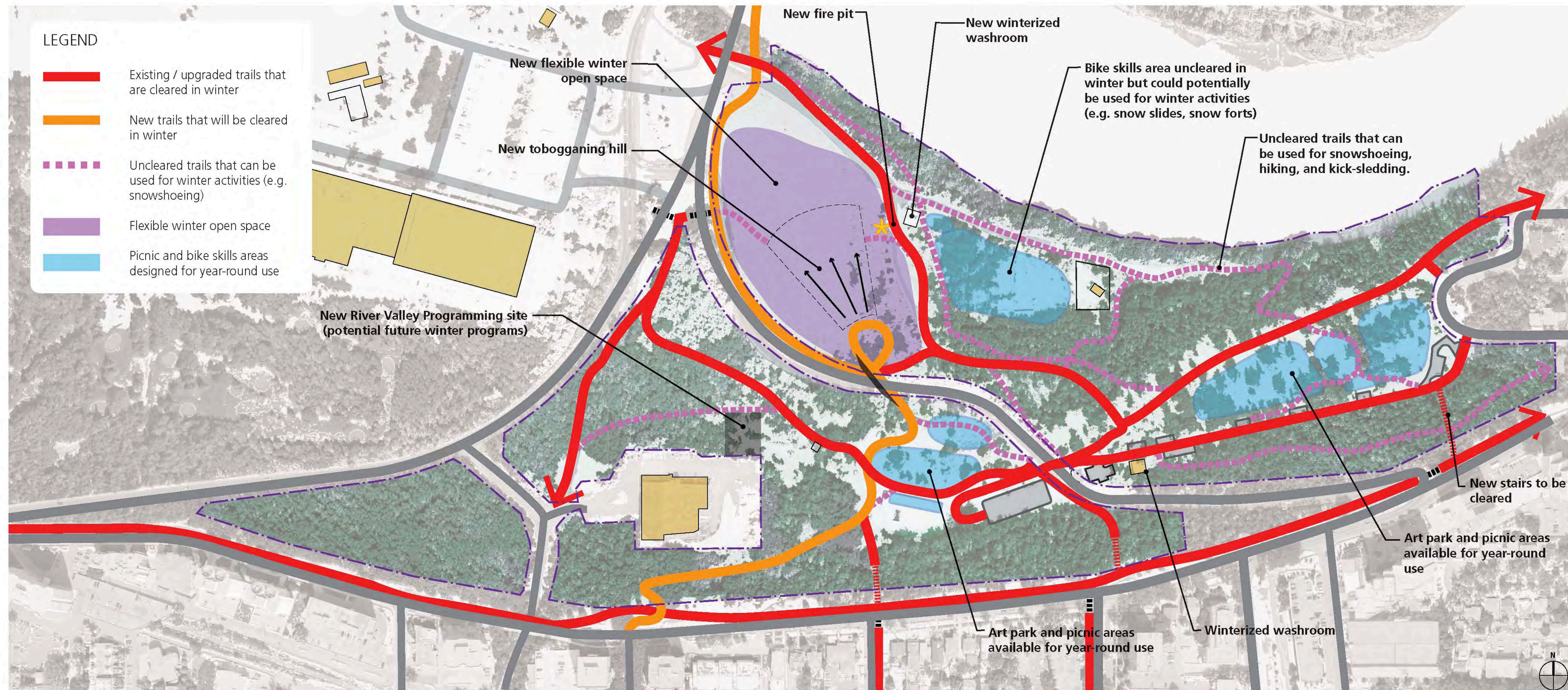
To **program** the flexible open space at the base of the hill for a wide variety of winter activities

To support the **City of Edmonton's WinterCity Strategy**

Public Feedback

Build a large mound for tobogganing, viewpoint, landmark: Selected by two workshop #2 groups as a top priority for implementation.

Winter activities: 82% of online survey #1 respondents said they were very interested in seeing winter activities (e.g. tobogganing, snowshoeing) enhanced in the park.



Flexible winter open space programming

The open field will provide a prominent and accessible site in the river valley for winter festivals and events, such as a festival of lights, snow sculpture competitions, snow fort building, snow slides, and ice-climbing walls.

A fire pit will be integrated into the lower park facility node.

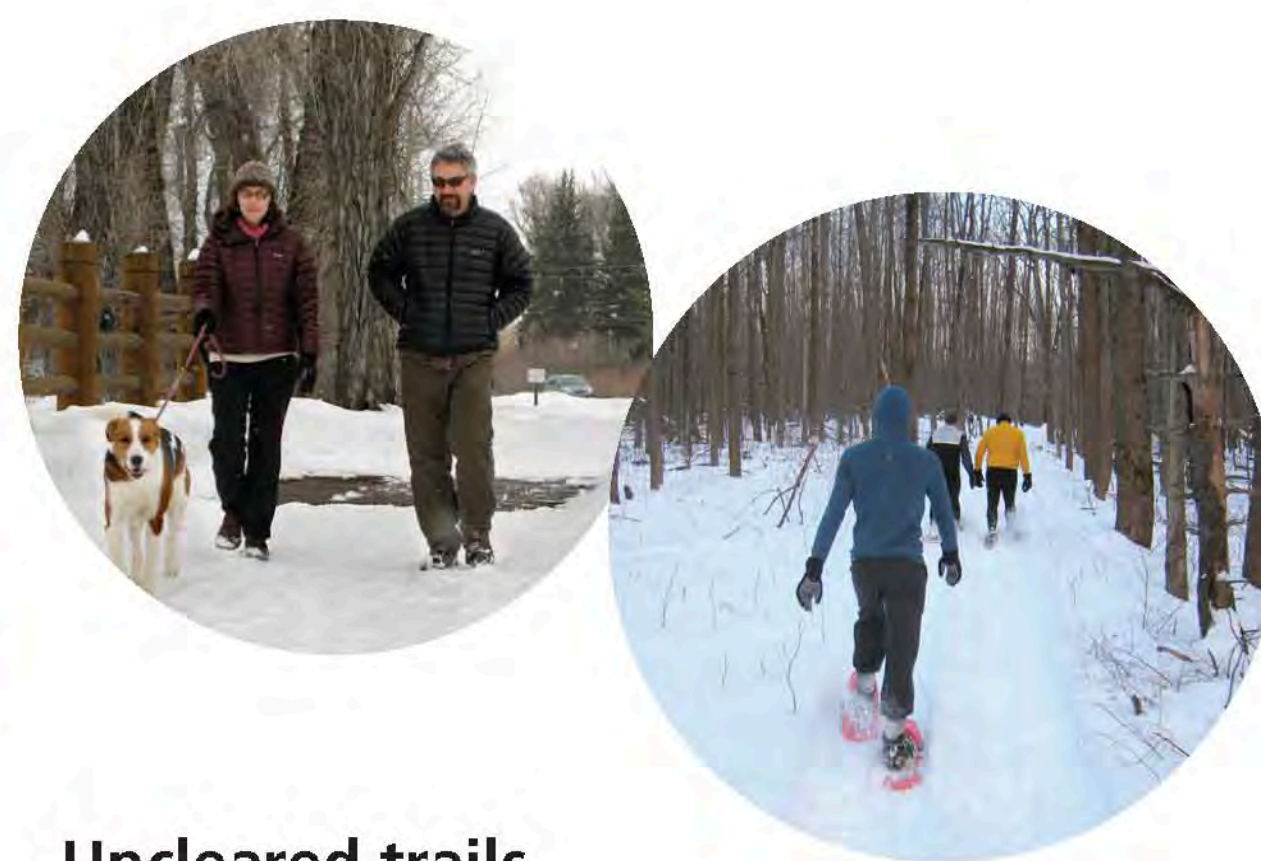
Having food trucks or vending machines with hot drinks and food will be explored.

Providing temporary equipment rentals (e.g. snowshoes, toboggans) will be explored.



Network of cleared trails

A network of trails will be kept clear in winter for running, walking, cycling and other year-round activities.



Uncleared trails

Minor pedestrian paths will be left snow-covered in winter to allow snowshoeing, winter hiking, kick-sledding, and other winter activities

Winter activities are supported

Picnic areas and picnic area barbecues will be designed for year-round use.

Winter play and activity areas will be supported.



Site elements and features are designed to maximize winter comfort and interest

Temporary warming huts and/or fire pits will be added.

Interesting lighting will be added to attract users to the park and support activities in winter evenings.

Site features will have a colour palette that has year-round interest.

Washrooms will be winterized.



Winter Activities

Queen Elizabeth Park Master Plan

November 2012

SPACE@PLACE

THE CITY OF
Edmonton

Interpretive Intent

To reveal **place-specific stories** that enhance visitors' understanding of and appreciation for the park

Public Feedback

Interpretation of natural and cultural history of the park: Received a good level of support based on online survey comments.

Interpretive Intent

To reveal **place-specific stories** that enhance visitors' understanding of and appreciation for the park

Public Feedback

Interpretation of natural and cultural history of the park: Received a good level of support based on online survey comments.

Interpretive Intent

To reveal **place-specific stories** that enhance visitors' understanding of and appreciation for the park

Public Feedback

Interpretation of natural and cultural history of the park: Received a good level of support based on online survey comments.

Interpretive Intent

To reveal **place-specific stories** that enhance visitors' understanding of and appreciation for the park

Public Feedback

Interpretation of natural and cultural history of the park: Received a good level of support based on online survey comments.

Interpretive Themes

Potential interpretive themes include:

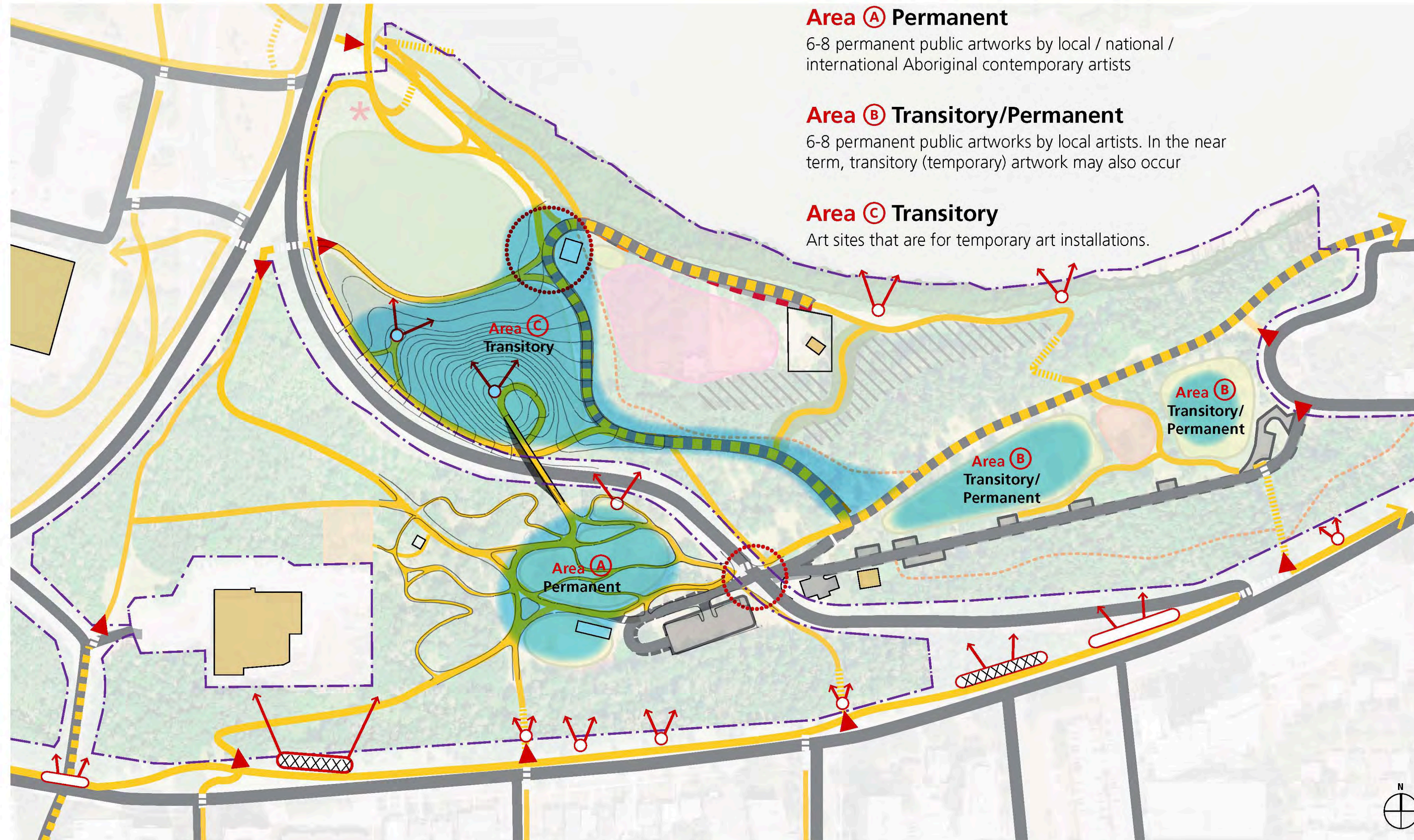
- Aboriginal culture and history
- Archaeology
- Identify native plants growing in the park along an ethnobotanical trail and provide information about their traditional uses as food, medicine, etc.
- A park for the people: Edmonton's oldest outdoor pool
- Wastewater treatment plant
- Ecology and Park Stewardship

Interpretive Themes

Potential interpretive themes include:

- Aboriginal culture and history
- Archaeology
- Identify native plants growing in the park along an ethnobotanical trail and provide information about their traditional uses as food, medicine, etc.
- A park for the people: Edmonton's oldest outdoor pool
- Wastewater treatment plant
- Ecology and Park Stewardship

- ## Interpretive Themes
- Potential interpretive themes include:
- Aboriginal culture and history
 - Archaeology
 - Identify native plants growing in the park along an ethnobotanical trail and provide information about their traditional uses as food, medicine, etc.
 - A park for the people: Edmonton's oldest outdoor pool
 - Wastewater treatment plant
 - Ecology and Park Stewardship



Wayfinding Intent

To provide signs throughout the park, at entry points and intersections to **orient park users spatially and help with navigation**

Wayfinding Intent

To provide signs throughout the park, at entry points and intersections to **orient park users spatially and help with navigation**

Wayfinding Signage

The wayfinding signage will be developed as the master plan is finalized

LONG-TERM CUT-THRU

MINOR PARK ID - PEDESTRIAN / ORIENTATION NODE

DIRECTIONAL

POWDER-COATED STEEL W/ CUT-OUT GRAPHICS

Early concept for park identification and directional signage

Wayfinding Signage

The wayfinding signage will be developed as the master plan is finalized

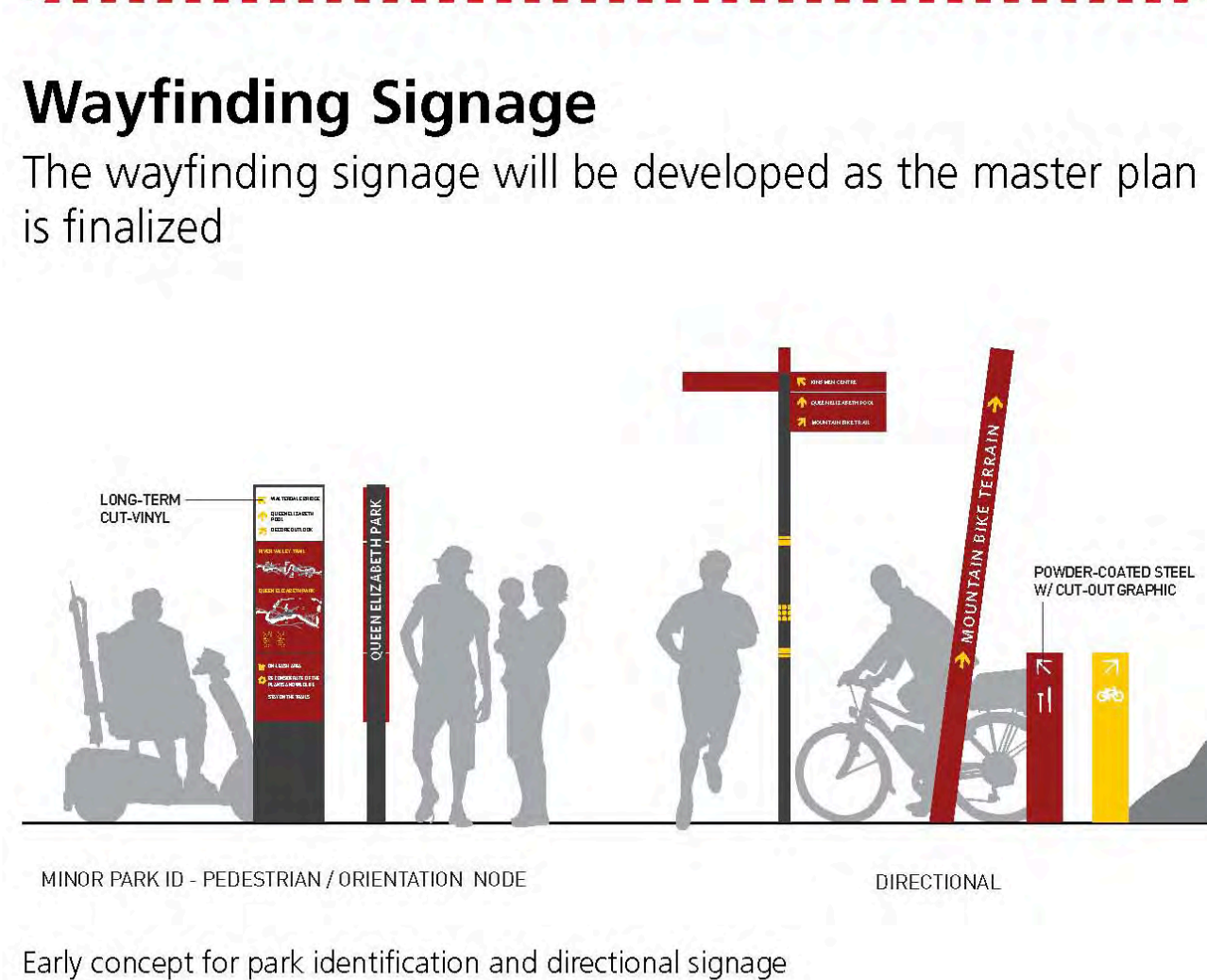
LONG-TERM CUT-THRU

MINOR PARK ID - PEDESTRIAN / ORIENTATION NODE

DIRECTIONAL

POWDER-COATED STEEL W/ CUT-OUT GRAPHICS

Early concept for park identification and directional signage



Wayfinding Signage

The wayfinding signage will be developed as the master plan is finalized

LONG-TERM CUT-THRU

MINOR PARK ID - PEDESTRIAN / ORIENTATION NODE

DIRECTIONAL

POWDER-COATED STEEL W/ CUT-OUT GRAPHICS

Early concept for park identification and directional signage



Early conceptual layout for wayfinding signage

Public Art Intent
To enhance the park's role as a place for **art appreciation**

Public Art Intent
To enhance the park's role as a place for **art appreciation**

Public Art Park

Queen Elizabeth Park has been identified as a potential location for Edmonton's first curated and designated public art park.

A Public Art Park Plan aligns with the goals and objectives of the following approved City of Edmonton planning documents: Master Plan for Public Art, The Art of Living, and The Way We Live.

High impact public art interventions in public areas could have the potential to shift perspectives of the potential of public spaces in Edmonton.

Opportunities to support and highlight the work of aboriginal, local and national artists.

Projects may focus on contemporary techniques, composition, and ground-breaking cultural interventions in public space through temporary or permanent projects.

Public Art Park

Queen Elizabeth Park has been identified as a potential location for Edmonton's first curated and designated public art park.

A Public Art Park Plan aligns with the goals and objectives of the following approved City of Edmonton planning documents: Master Plan for Public Art, The Art of Living, and The Way We Live.

High impact public art interventions in public areas could have the potential to shift perspectives of the potential of public spaces in Edmonton.

Opportunities to support and highlight the work of aboriginal, local and national artists.

Projects may focus on contemporary techniques, composition, and ground-breaking cultural interventions in public space through temporary or permanent projects.

Public Art Park

Queen Elizabeth Park has been identified as a potential location for Edmonton's first curated and designated public art park.

A Public Art Park Plan aligns with the goals and objectives of the following approved City of Edmonton planning documents: Master Plan for Public Art, The Art of Living, and The Way We Live.

High impact public art interventions in public areas could have the potential to shift perspectives of the potential of public spaces in Edmonton.

Opportunities to support and highlight the work of aboriginal, local and national artists.

Projects may focus on contemporary techniques, composition, and ground-breaking cultural interventions in public space through temporary or permanent projects.

Public Art Park

Queen Elizabeth Park has been identified as a potential location for Edmonton's first curated and designated public art park.

A Public Art Park Plan aligns with the goals and objectives of the following approved City of Edmonton planning documents: Master Plan for Public Art, The Art of Living, and The Way We Live.

High impact public art interventions in public areas could have the potential to shift perspectives of the potential of public spaces in Edmonton.

Opportunities to support and highlight the work of aboriginal, local and national artists.

Projects may focus on contemporary techniques, composition, and ground-breaking cultural interventions in public space through temporary or permanent projects.

Public Art Park

Queen Elizabeth Park has been identified as a potential location for Edmonton's first curated and designated public art park.

A Public Art Park Plan aligns with the goals and objectives of the following approved City of Edmonton planning documents: Master Plan for Public Art, The Art of Living, and The Way We Live.

High impact public art interventions in public areas could have the potential to shift perspectives of the potential of public spaces in Edmonton.

Opportunities to support and highlight the work of aboriginal, local and national artists.

Projects may focus on contemporary techniques, composition, and ground-breaking cultural interventions in public space through temporary or permanent projects.

Public Art Park

Queen Elizabeth Park has been identified as a potential location for Edmonton's first curated and designated public art park.

A Public Art Park Plan aligns with the goals and objectives of the following approved City of Edmonton planning documents: Master Plan for Public Art, The Art of Living, and The Way We Live.

High impact public art interventions in public areas could have the potential to shift perspectives of the potential of public spaces in Edmonton.

Opportunities to support and highlight the work of aboriginal, local and national artists.

Projects may focus on contemporary techniques, composition, and ground-breaking cultural interventions in public space through temporary or permanent projects.

What is Transitory Public art?

Transitory public art includes temporary experimental or contemporary interventions with the public realm (i.e. light art, video projections, performance, etc.)

The short-term nature of these projects helps to develop a greater understanding of public art and acceptance and demand for permanent public artworks.

Source: Edmonton Arts Council

What is Transitory Public art?

Transitory public art includes temporary experimental or contemporary interventions with the public realm (i.e. light art, video projections, performance, etc.)

The short-term nature of these projects helps to develop a greater understanding of public art and acceptance and demand for permanent public artworks.

Source: Edmonton Arts Council

What is Transitory Public art?

Transitory public art includes temporary experimental or contemporary interventions with the public realm (i.e. light art, video projections, performance, etc.)

The short-term nature of these projects helps to develop a greater understanding of public art and acceptance and demand for permanent public artworks.

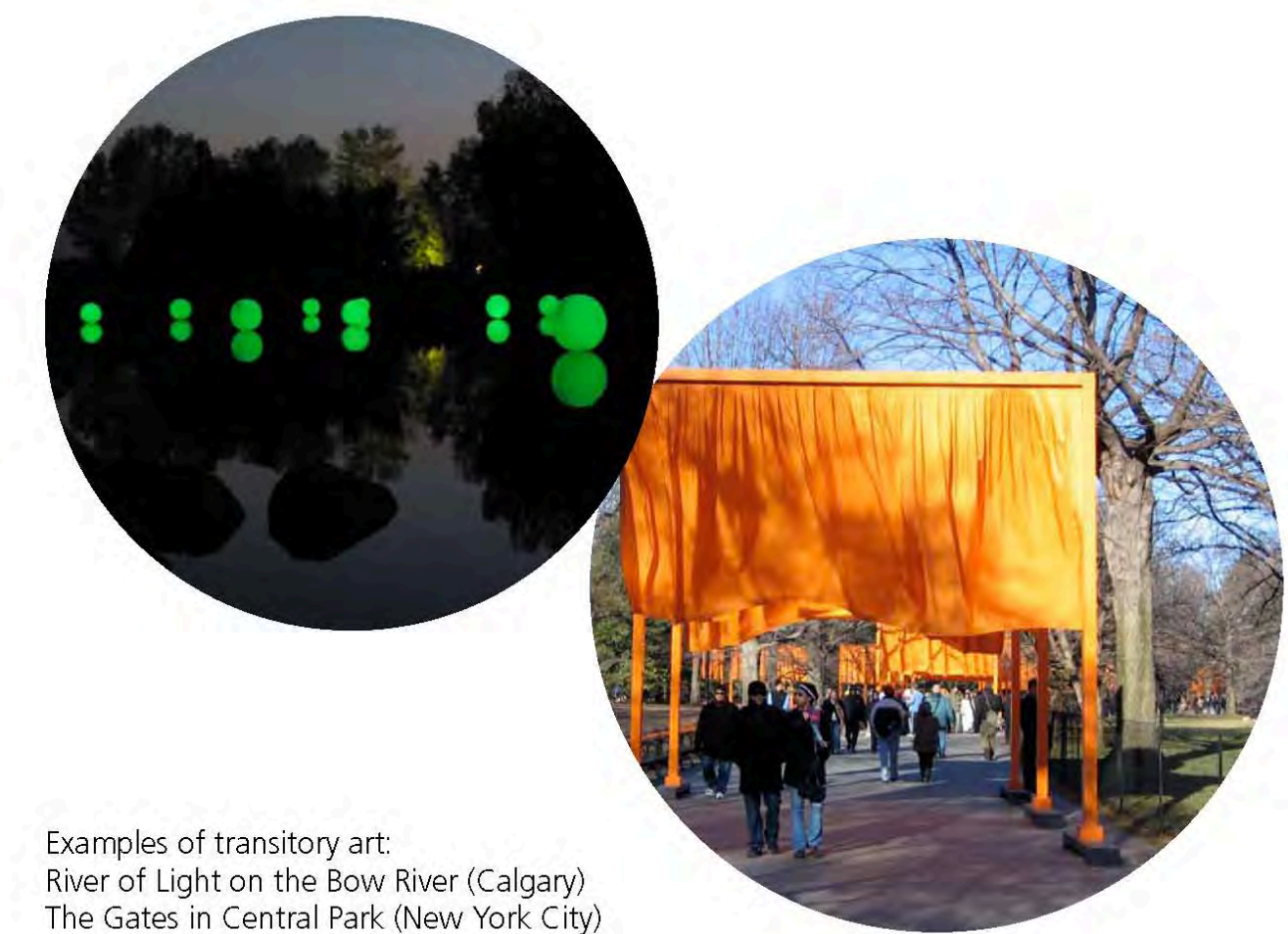
Source: Edmonton Arts Council

What is Transitory Public art?

Transitory public art includes temporary experimental or contemporary interventions with the public realm (i.e. light art, video projections, performance, etc.)

The short-term nature of these projects helps to develop a greater understanding of public art and acceptance and demand for permanent public artworks.

Source: Edmonton Arts Council



Examples of transitory art:
 River of Light on the Bow River (Calgary)
 The Gates in Central Park (New York City)

Interpretive Signage, Wayfinding and Public Art

Queen Elizabeth Park Master Plan

Queen Elizabeth Park Master Plan

SPACE  PLACE

THE CITY OF
Edmonton

SPACE  PLACE

THE CITY OF
Edmonton