

Intent

To create a vibrant, usable park space including:

- Improved **connections** into and through the upper park contemplative space
- Active uses** such as picnics and frisbee
- River Valley Programming
- Views** towards lower park, downtown and river
- Space for a curated **public art park**
- Space for **gatherings** or small events

To provide **amenities** to support user comfort.

To identify important places and ways for interpreting the **cultural history** of the site

River Valley Programming

Includes outdoor team-building activities for youth (archery and low-ropes)

- Currently operates May through November
- Requires a fenced area with a bus drop-off, toilets, drinking fountain in the vicinity and emergency vehicle access.
- The upper park location is preferred as there is an existing clearing in a low-traffic area with good access. The retaining wall of the O'Keefe yard provides a backdrop for archery.

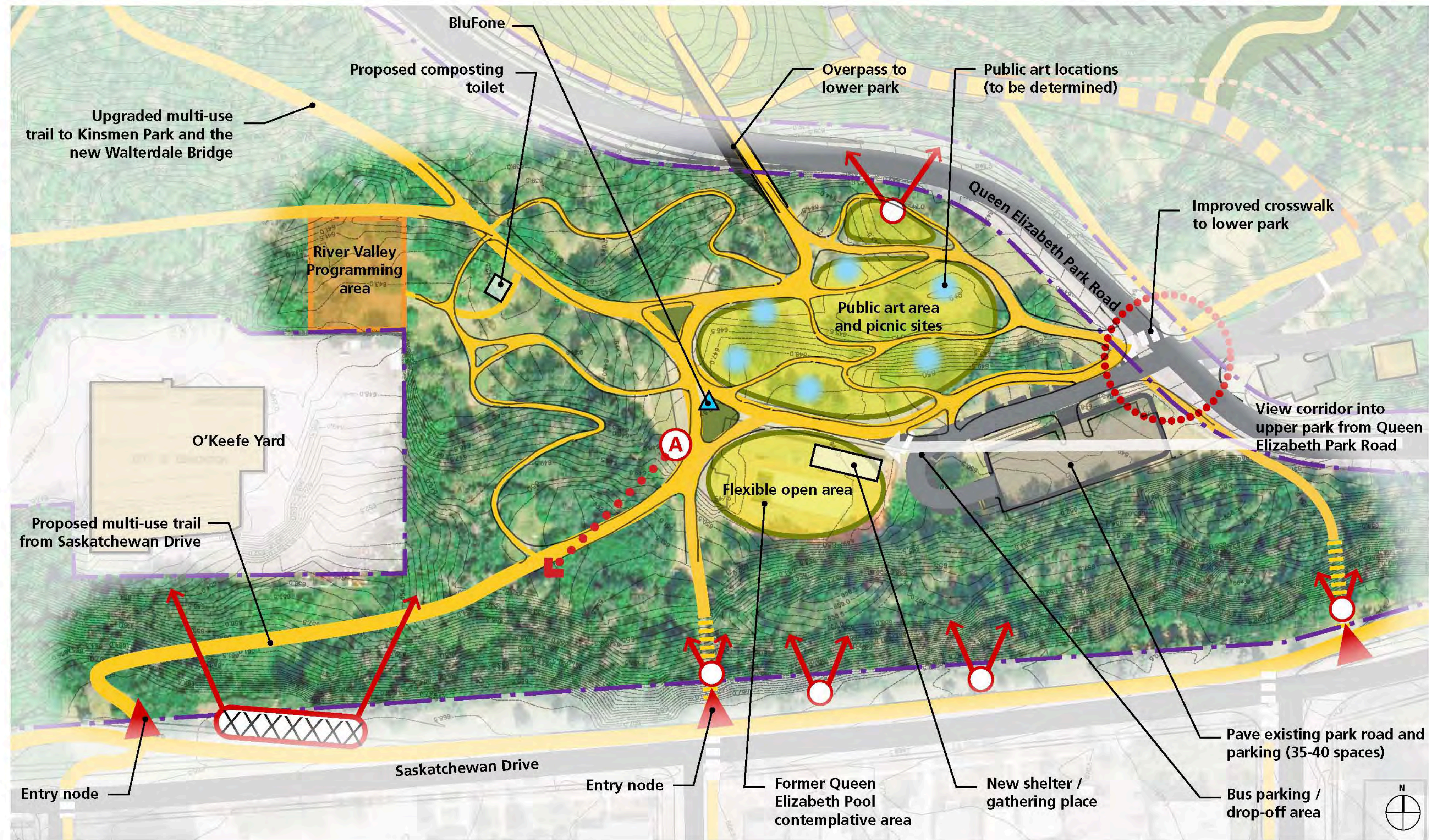


Trails

Proposed multi-use trail between Saskatchewan Drive at 106 St. and the old pool site.

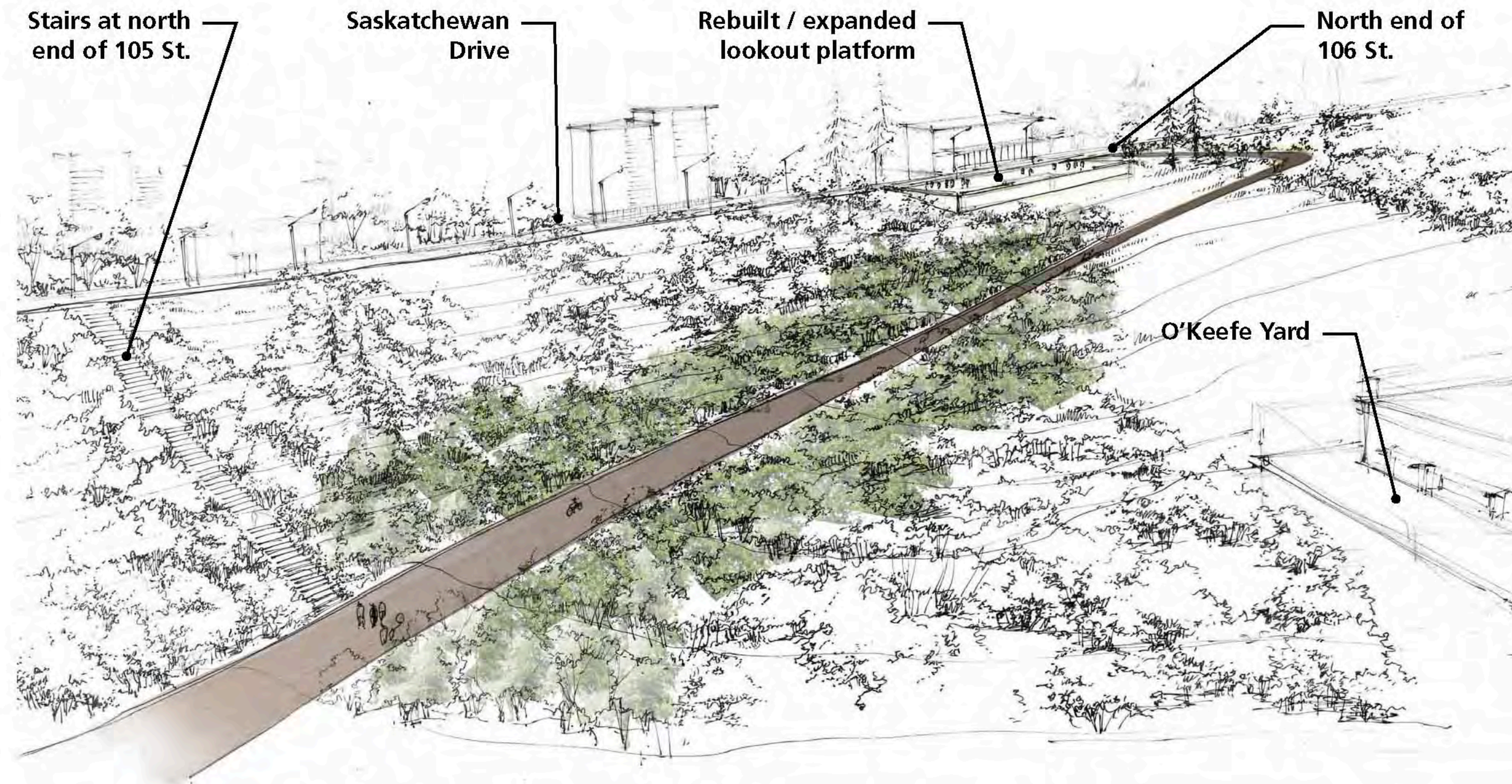
The proposed multi-use trail between the new drop-off area and River Valley Programming will accommodate emergency vehicle access.

Minor gravel trails within the upper park provide pedestrian circulation to picnic sites and public art park.



A Proposed multi-use trail

A new accessible trail connection between Saskatchewan Drive at 106 St. and the former Queen Elizabeth Pool site.



Former Queen Elizabeth Pool

Designate contemplative space that commemorates the old pool



Amenities

The upper park includes new amenities that support user comfort, including:

- A new seasonal washroom building in the upper park to support park visitors, including River Valley Programming participants and the public
- Upgraded and new picnic sites
- New shelter / gathering place
- Potential drinking fountain
- BluFone
- Area for public art
- Seating



Parking and Drop-Off Area

The existing parking lot will be formalized and paved to provide 35-40 spaces

A drop off area long enough for two buses will be included east of the former pool site. Buses are currently used to transport youth to and from River Valley Programming.

The existing park road will be paved to provide access to the parking lot and drop-off area.



Flexible Open Space

Provide an open area for small gatherings, events and informal games



Upper Park - Former Pool Site and Area

Queen Elizabeth Park Master Plan

November 2012

Intent

The **pedestrian overpass** provides a grade-separated connection over Queen Elizabeth Park Road, connecting the upper and lower park areas.

The **grassy mound** is built to function as a tobogganing hill in the winter, and to provide excellent views of the skyline, river valley, and fireworks on Canada Day.

Together, the mound and overpass create 'framed views' for vehicles driving toward the Walterdale Bridge.

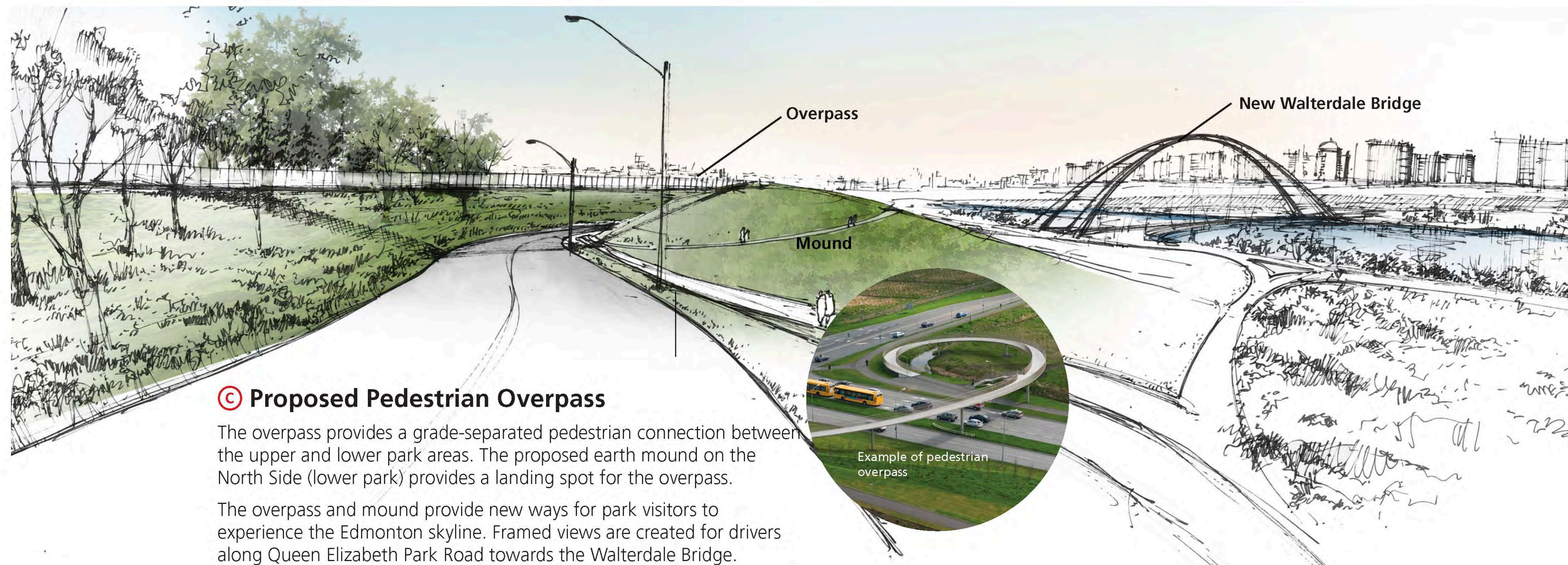
Public feedback

Build a new pedestrian overpass over Queen Elizabeth Park Road: The overpass was identified by online survey respondents as a top priority.

Build a large mound for tobogganing and viewpoints: Selected by two workshop groups as a top priority for implementation.

A Mound along Queen Elizabeth Park Road

The grassy slope of the mound provides an excellent vantage point for enjoying views of the river valley and skyline, and watching fireworks on Canada Day. During the winter the mound becomes a toboggan hill.



Overpass and Mound

Queen Elizabeth Park Master Plan

November 2012

SPACE2PLACE

THE CITY OF
Edmonton

Intent

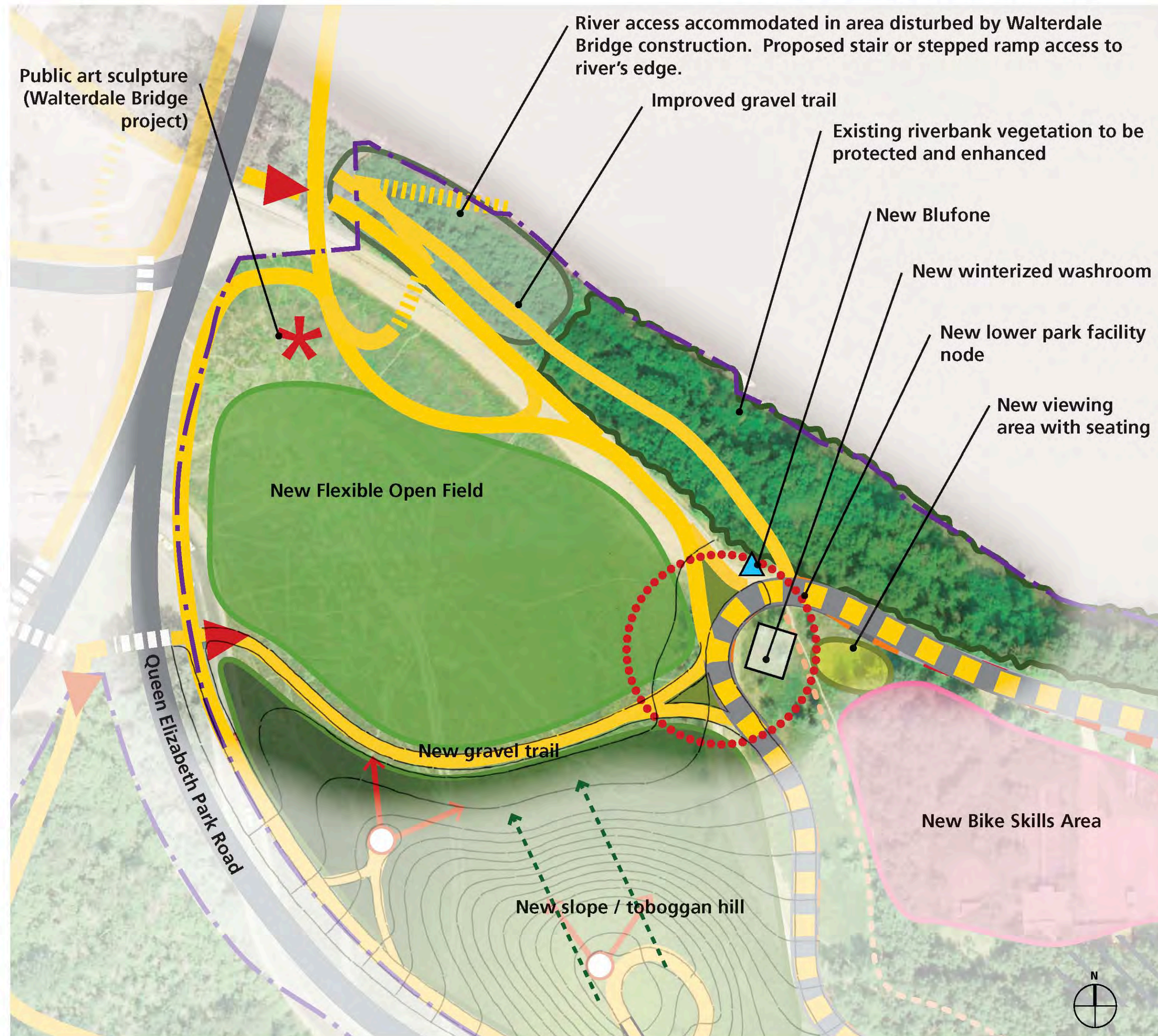
To provide a **flexible open space** that allows for a variety of year-round uses and special events

To provide **river access** near the new Walterdale Bridge

To provide a lower park **facility node** with winterized washroom, drinking fountain, seating area, and fire pit.

Public Feedback

Formalize access to the river: Selected as a top priority for implementation in the online survey, and received 75% support in both online surveys.



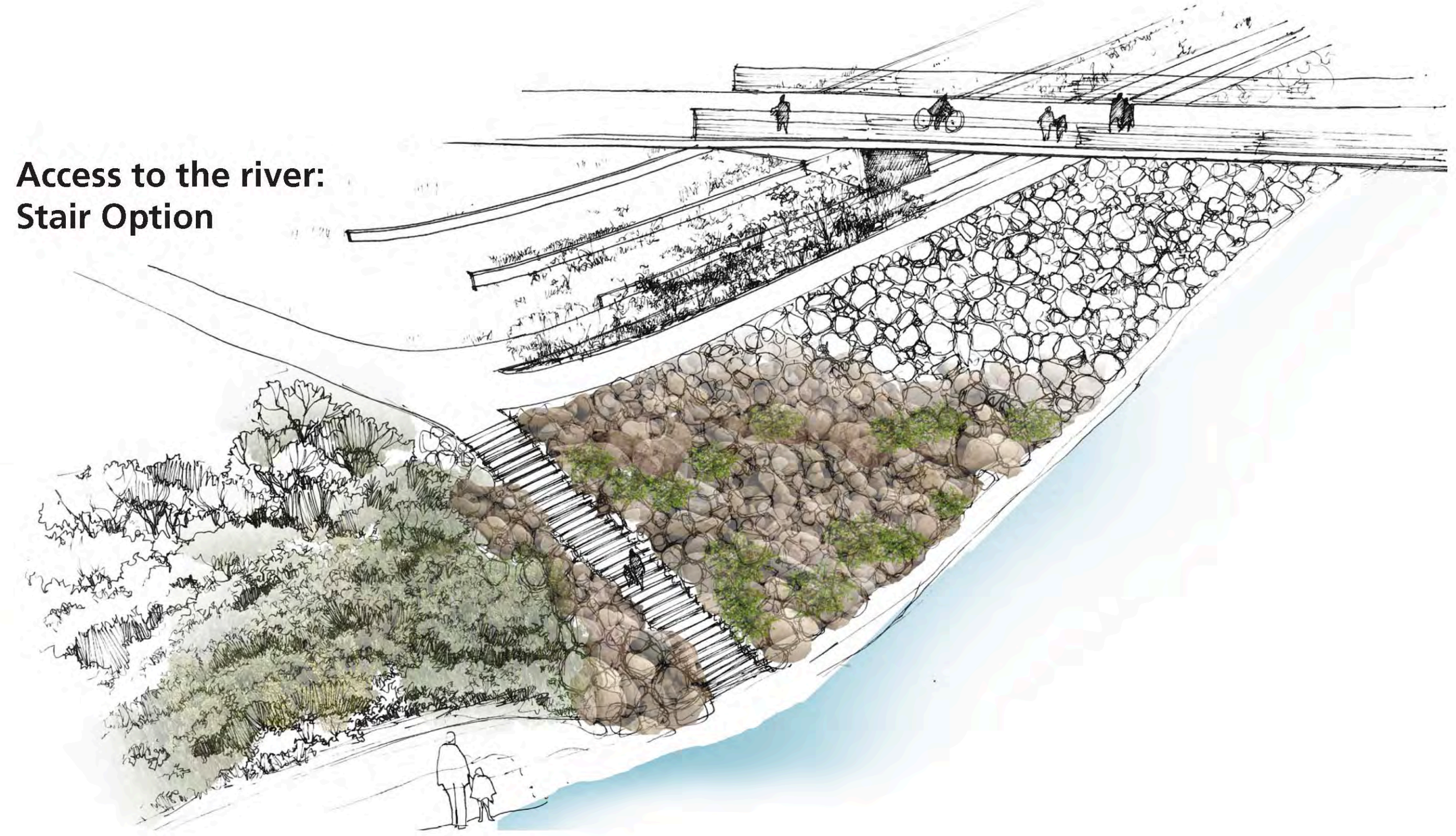
River Access

A new pedestrian trail down to the river will allow people to “touch the water.”

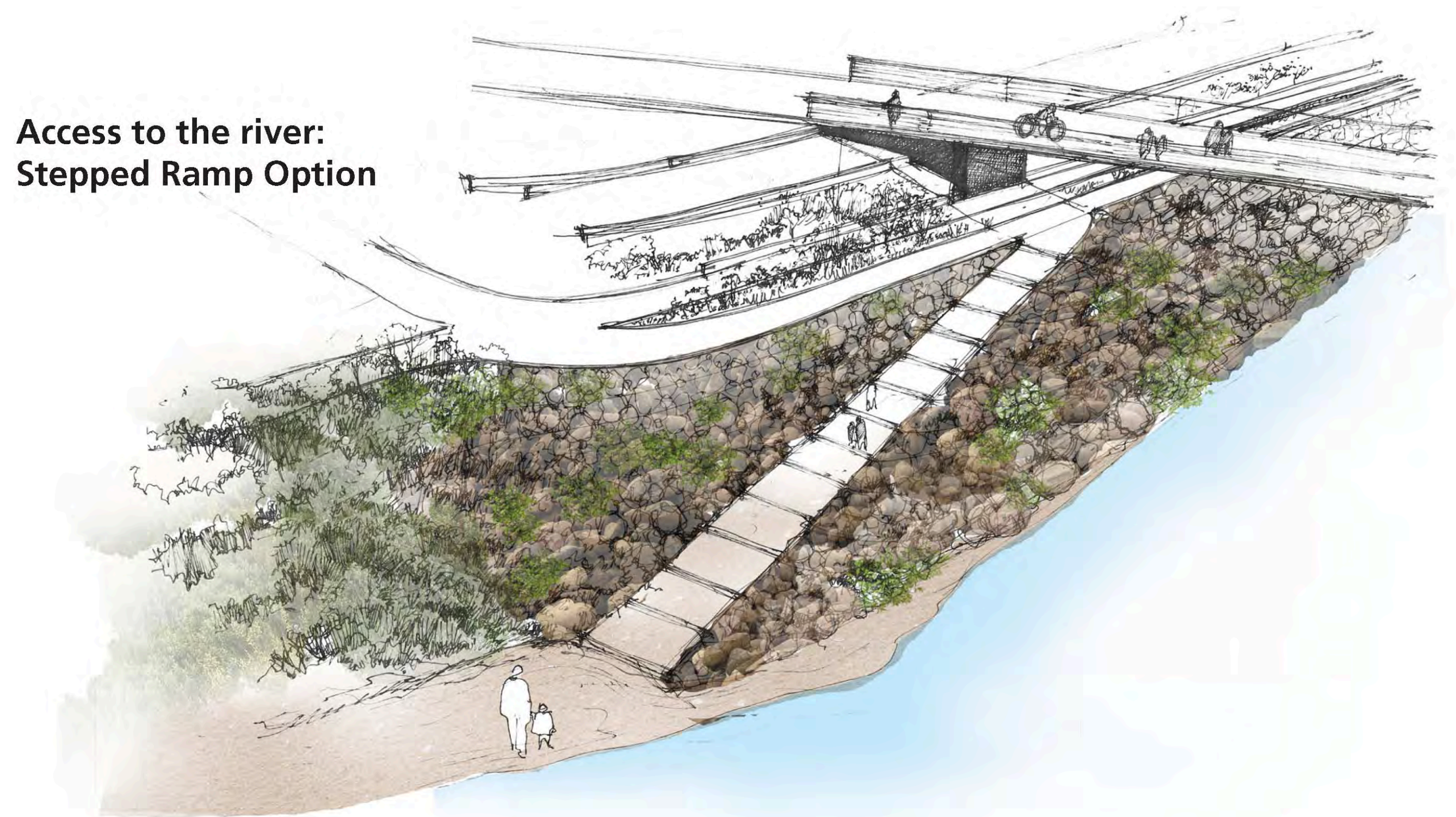
The pedestrian trail will likely include stairs or steps and will not be universally accessible due to the large grade change.

Potential alignment options for the river access are being explored in conjunction with the Walterdale Bridge construction.

Access to the river: Stair Option



Access to the river: Stepped Ramp Option



Flexible open space

Provides a large, flat grassed area that is uniquely located near to the urban core of the city.

The open space can be used for small events, pick-up games, frisbee, sun-bathing, informal picnics and viewing fireworks in the summer, among other activities.

Winter programs can include a run-out area for the toboggan hill, temporary warming huts, transitory art, small events and playing in the snow.

The site will have electrical servicing to support events.



Lower Park Facility Node

A facility node will be built at the intersection of trails and activities in the lower park.

The node will include a small paved plaza with seating, new planting and wayfinding signage. There will also be a new winterized, accessible washroom building, a drinking fountain, and a 'BluFone' emergency phone.



River Access, Flexible OpenField and Facility Node

Queen Elizabeth Park Master Plan

November 2012

SPACE@PLACE

THE CITY OF
Edmonton