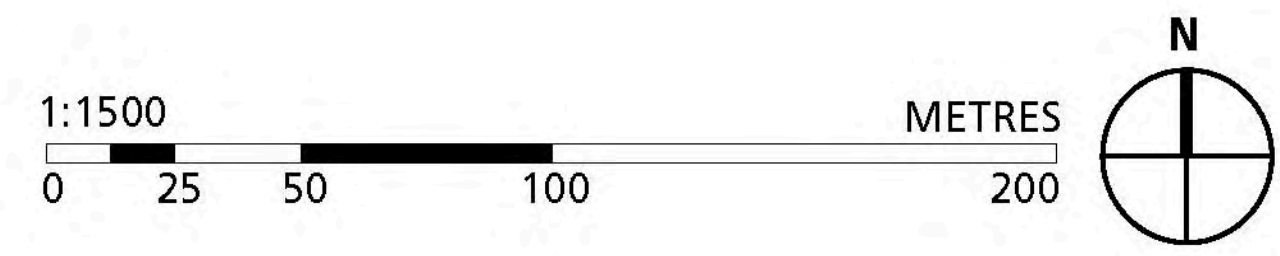




Draft Master Plan Overview

Queen Elizabeth Park Master Plan November 2012



Intent

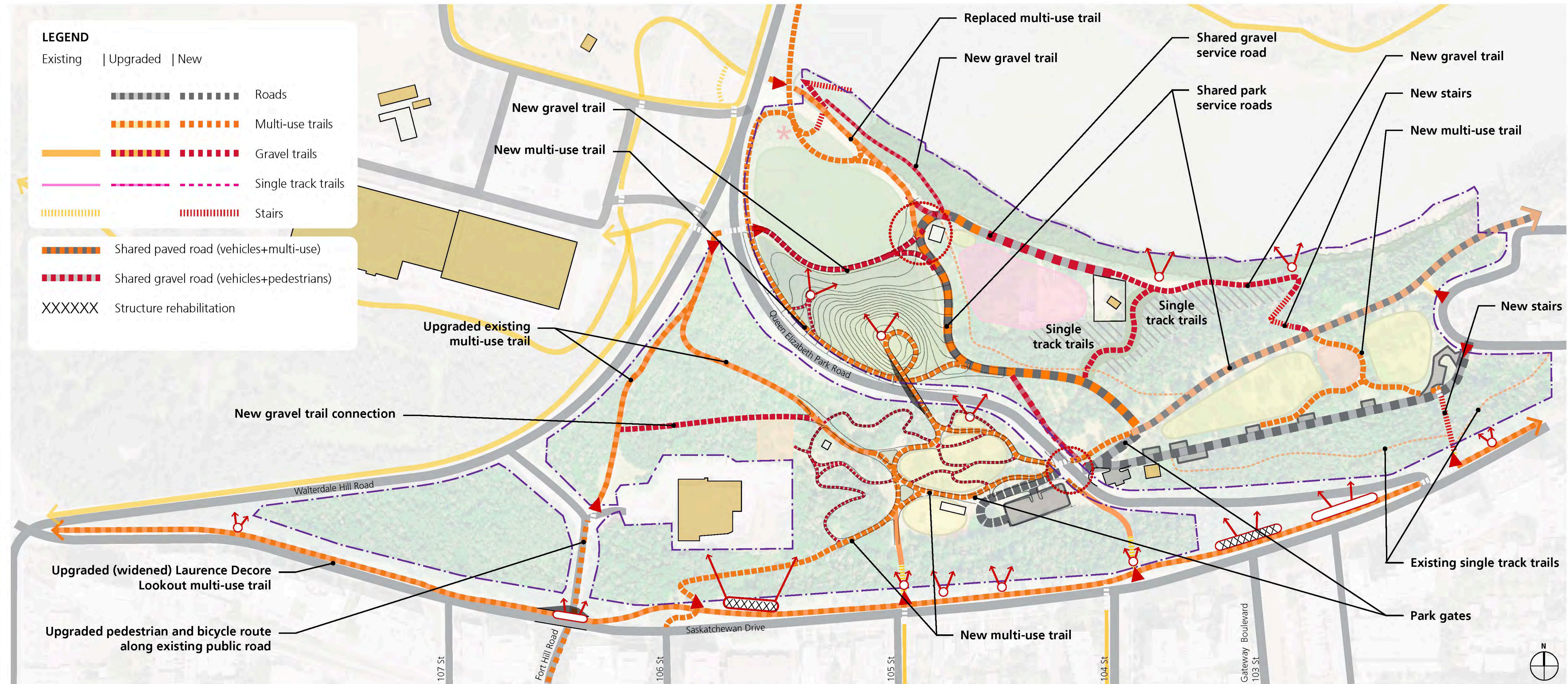
To improve the **circulation network** with trail upgrades and new trail connections

To identify priority routes for **snow clearing**

Public feedback

Improve north-south multi-use trail connections

Improve and expand multi-use trail network throughout the park



Park Service Roads

Cleared in winter

Park gates ensure that only authorized service vehicle access is permitted

Multi-modal traffic accommodated

Signage to direct movement and ensure safety



Multi-use trails

Main trails cleared in winter for use by pedestrians, wheelchairs, strollers, cyclists, roller bladers, skateboarders, etc.

Asphalt surface with a min. width of 3m

Accessible grades whenever possible (max. slope of 8% or 1:12)

Occasional use by service vehicles for maintenance operations and emergencies

Ensures connectivity within river valley trail system and into adjacent neighbourhoods



Gravel trails

Not cleared in winter

For use by pedestrians and cyclists

Hard-packed crushed stone surface

3m width where space allows

1.5m width in environmentally sensitive areas and where slopes and existing trees limit the ability for wider trails



Single track trails

Not cleared in winter

'Natural' surface with a minimum width of 0.5m

Some hardening is acceptable in erosion-prone areas

May be aligned through challenging / irregular topography and with reduced clearance to trees



Stairs

Cleared in winter if on primary circulation route

To be installed in locations where slopes are too steep or terrain too rough to allow a multi-use or gravel trail

Includes bicycle wheel ramps or adjacent trail for cyclists



Trail Hierarchy

Queen Elizabeth Park Master Plan

November 2012

SPACE  PLACE

THE CITY OF
Edmonton

Intent

To leave forested areas in their **natural state** as much as possible.

To focus new development primarily in **previously-disturbed areas**.

To **rehabilitate** degraded areas with erosion control strategies and new planting.

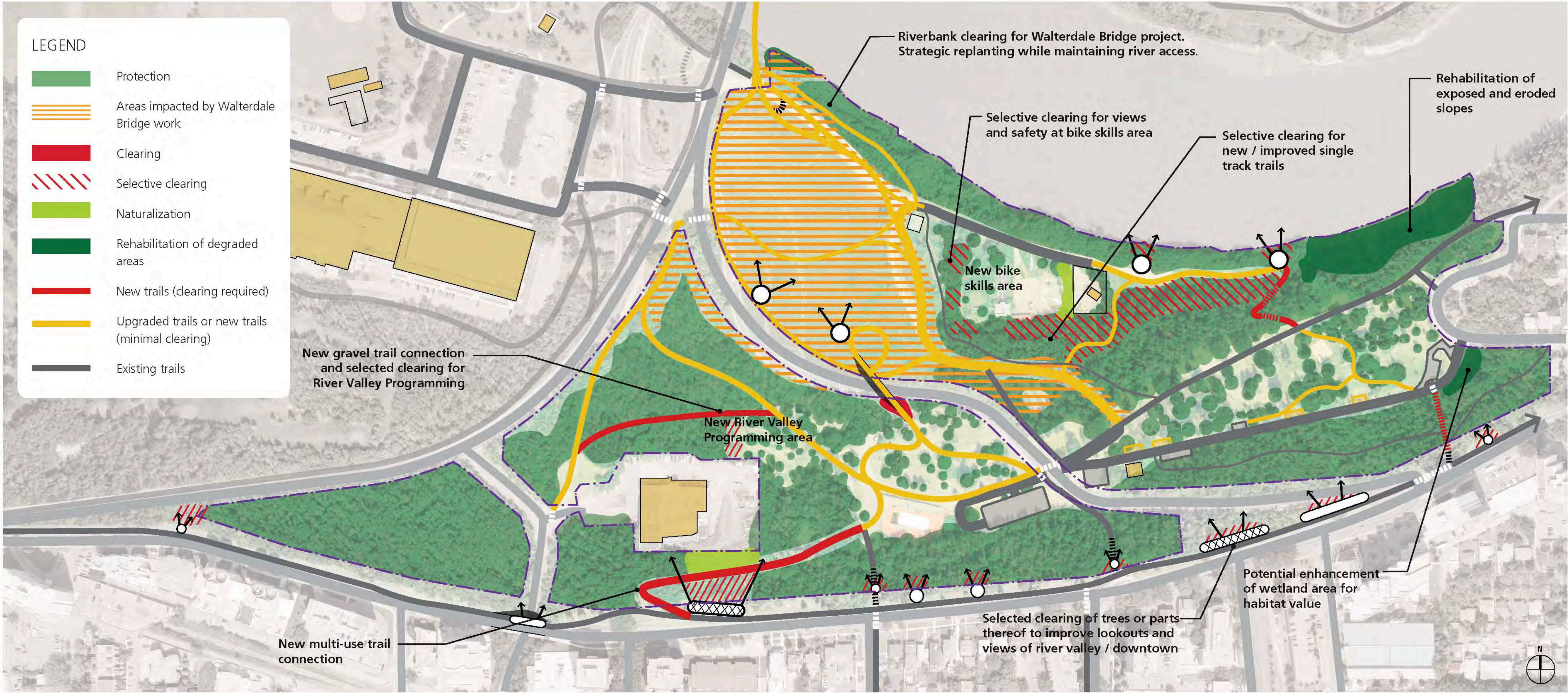
To formalize some single track trails to **reduce ad hoc trail development**. Some single track trails are closed and naturalized.

To develop **strategies for enhancing wildlife habitat and forest health** through management (e.g. infill planting, invasive species removal).

Public Feedback

Protect and enhance the ecological health of the forest and riverbank: A top priority in the online survey (top priority for 30% of respondents). There were many comments received throughout the public consultation in support of preserving the park's natural qualities.

Valued natural qualities: The majority of online survey #1 respondents indicated that they strongly valued the park's natural qualities and wanted to see these protected.



Protection of Existing Forest

Forested areas are left in their natural state as much as possible.

Future phases of park design will require more detailed environmental reviews. Layout of park features may change depending on the findings of these reviews.

Design elements can be incorporated into future design phases to support target species (e.g. snags, coarse woody debris) and forest management strategies can be developed to enhance the health of the forest (e.g. invasive species removal).



Areas impacted by Walterdale Bridge Construction

Some areas of the park will be impacted by work related to the new Walterdale Bridge construction.

Applicable areas include: Dantzer's Hill, a section of riverbank east of the new bridge, and a new service road east of Queen Elizabeth Park Road.

Naturalization

Some areas will be converted to forest using native species, complex vegetation structure (trees, shrubs, groundcover), and woody debris for habitat value.



Clearing

New multi-use and gravel trail connections will require clearing in selected areas of the park to improve circulation.

Selective Clearing

Selected trees will be cleared in the bike skills area to improve the area's visibility and safety.

Formalizing some single track trails will help reduce *ad hoc* trail development in the forest. Design elements (e.g. logs, boulders, etc.) can be incorporated in future park design to help keep users on the trails. Layout of single track trails will depend on the findings from environmental reviews.

Selected trees or parts thereof will be removed to restore lookout points and create new lookout points in some places.

Some clearing will occur north of the O'Keefe Site for the new River Valley Programming site.

Rehabilitation of Degraded Areas

Single track trail(s) in east end of park will be closed. Additional degraded areas will be identified for rehabilitation during future phases of detailed park design.

Exposed slopes will be stabilized with erosion control strategies (e.g. biodegradable erosion control fabric).

Exposed areas will be replanted with native species appropriate to the site conditions.

Additional areas for rehabilitation will be identified in detailed park design phases.

Enhancement of the small wetland area (east end of the park) will be explored.



Intent

To designate and maintain **lookouts** and **view corridors**

To improve the visibility, safety and aesthetics of **park entry points**

To improve **accessibility** of the park

To improve the **pedestrian crossing** at Queen Elizabeth Park Road

Public Feedback

Improve existing lookouts and add new lookouts.

Improve access into the park from the south.

Improve the existing Queen Elizabeth Park Road crossing.

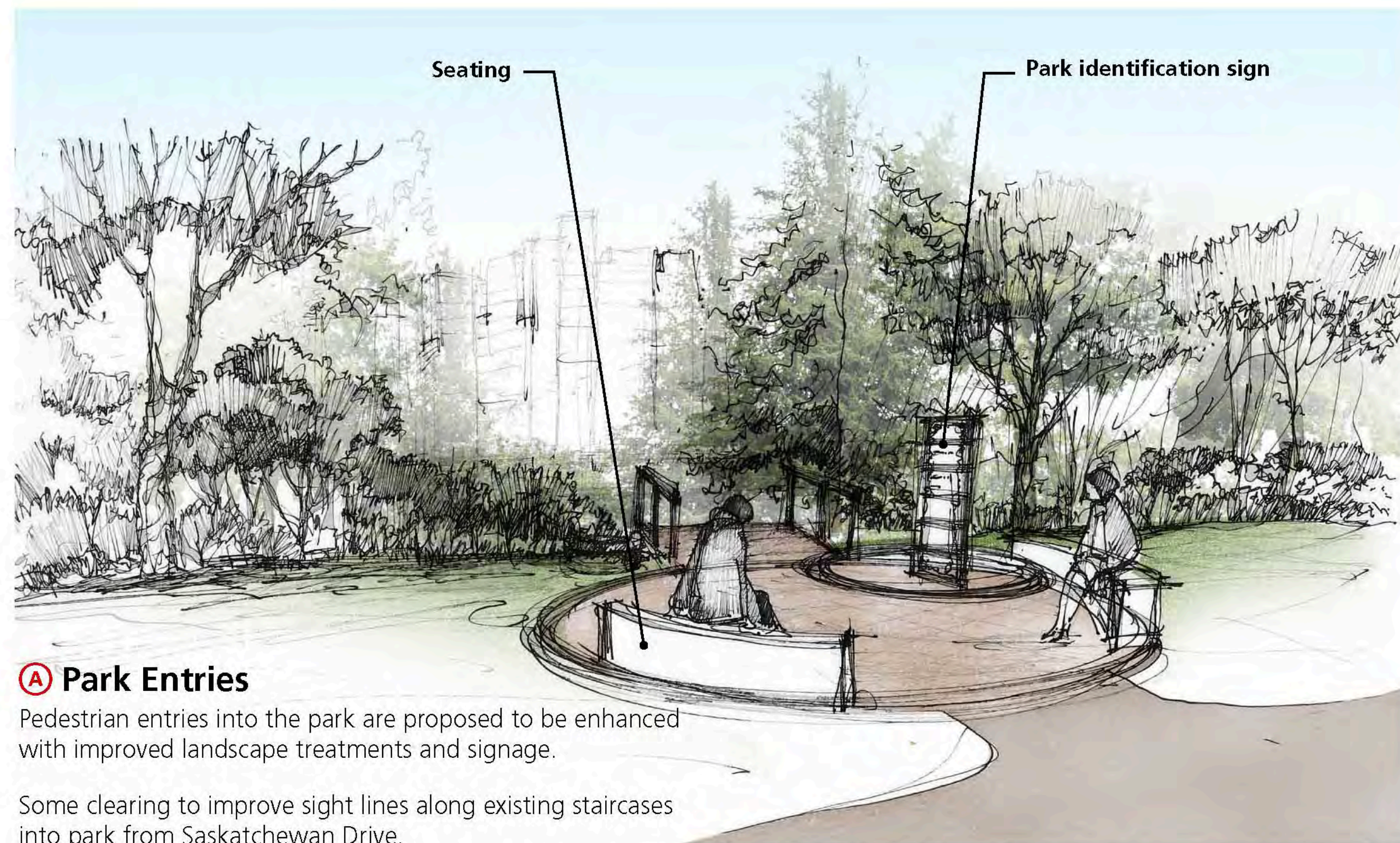
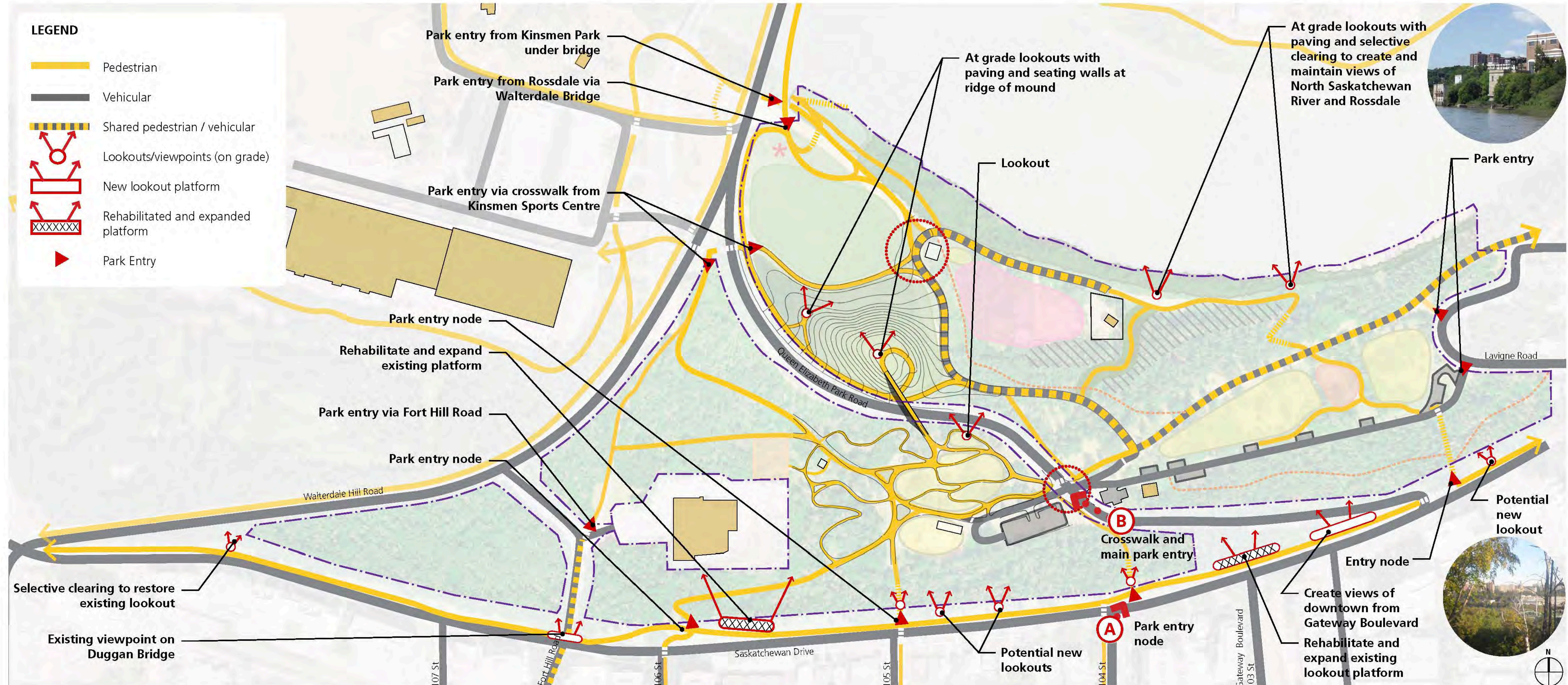
Lookouts

Lookout locations are based on significant views and where minimal clearing is required.

Views from established lookouts are to be enhanced and maintained with selective clearing.

Existing lookout structures along Saskatchewan Drive (eg. Laurence Decore Lookout) are proposed to be rehabilitated and potentially expanded.

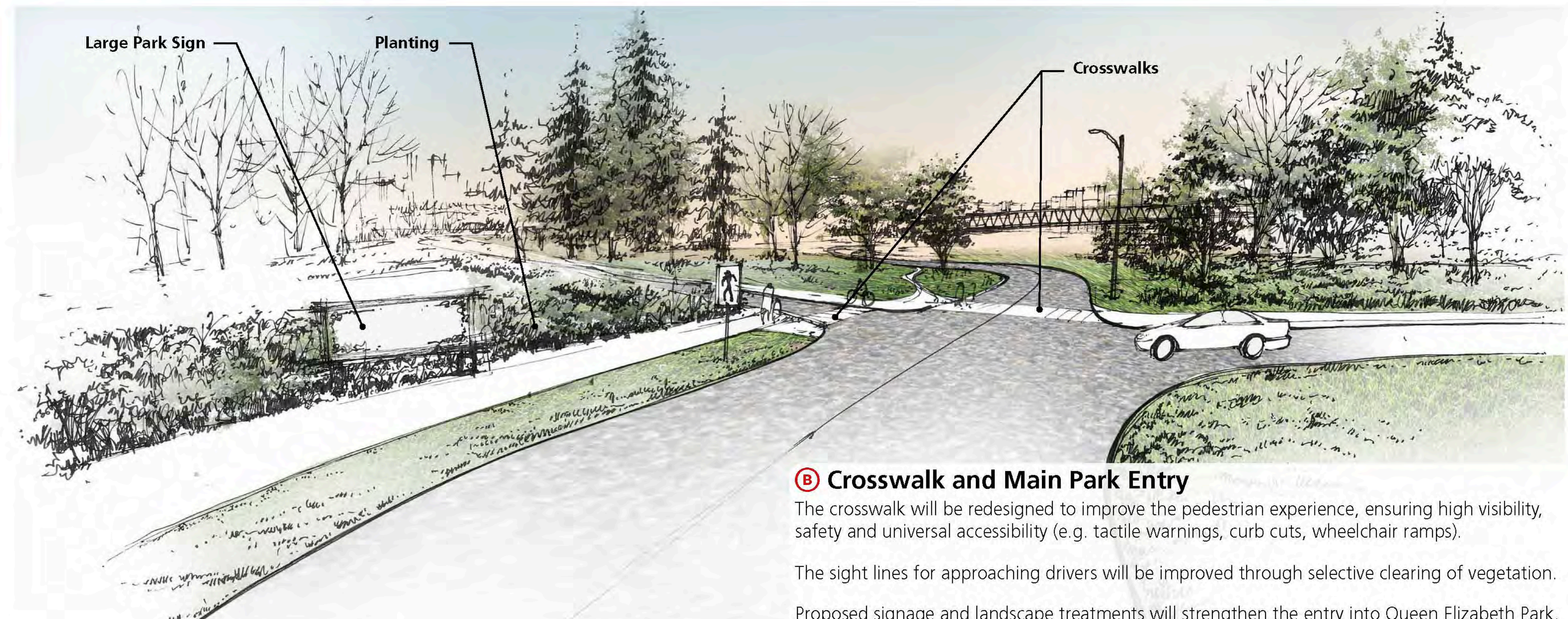
Lookouts integrated with the proposed mound and those near the riverbank will be built on grade and include seating.



Lookouts, Park Entries and Crosswalk

Queen Elizabeth Park Master Plan

November 2012



SPACE@PLACE

THE CITY OF
Edmonton