



# Historical Housing Typologies

1910s

1930s to 1940s

1950s to 1960s

1970s to 1980s

1990s to Early 2000s

2010s to Present

## Single-Detached

RF1 RF2 RPL  
RSL RF3 10 m  
MNO 8.6 m

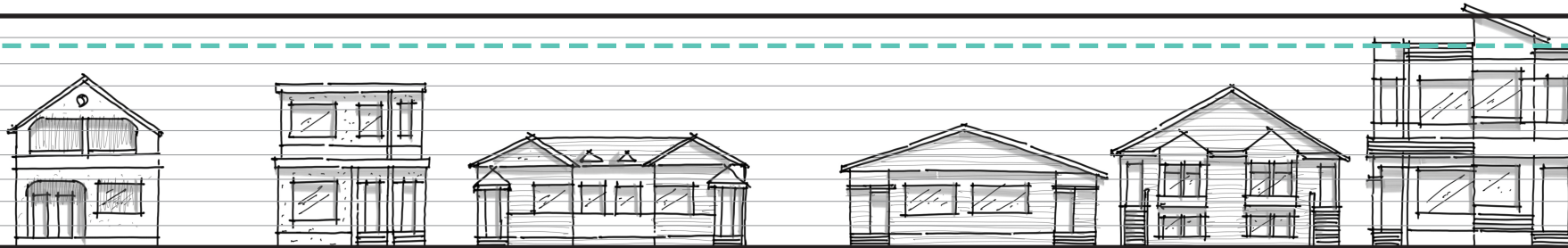
8 m  
7 m  
6 m  
5 m  
4 m  
3 m  
2 m  
1 m



## Semi-Detached

RF3 RF4 10 m  
MNO 8.6 m

8 m  
7 m  
6 m  
5 m  
4 m  
3 m  
2 m  
1 m



## Row Housing

RF5 10 m  
MNO 8.6 m

12 m  
11 m  
10 m  
9 m  
8 m  
7 m  
6 m  
5 m  
4 m  
3 m  
2 m  
1 m



\*In most cases height is measured from grade to the mid-point of the roof peak.

\*\*Drawings are not to scale; for illustrative and discussion purposes only.