

City of Red Deer

Oil & Gas Liaison



Introduction

Jim Benum – Oil & Gas Liaison
Parkland Community
Planning Services (PCPS)

Overview

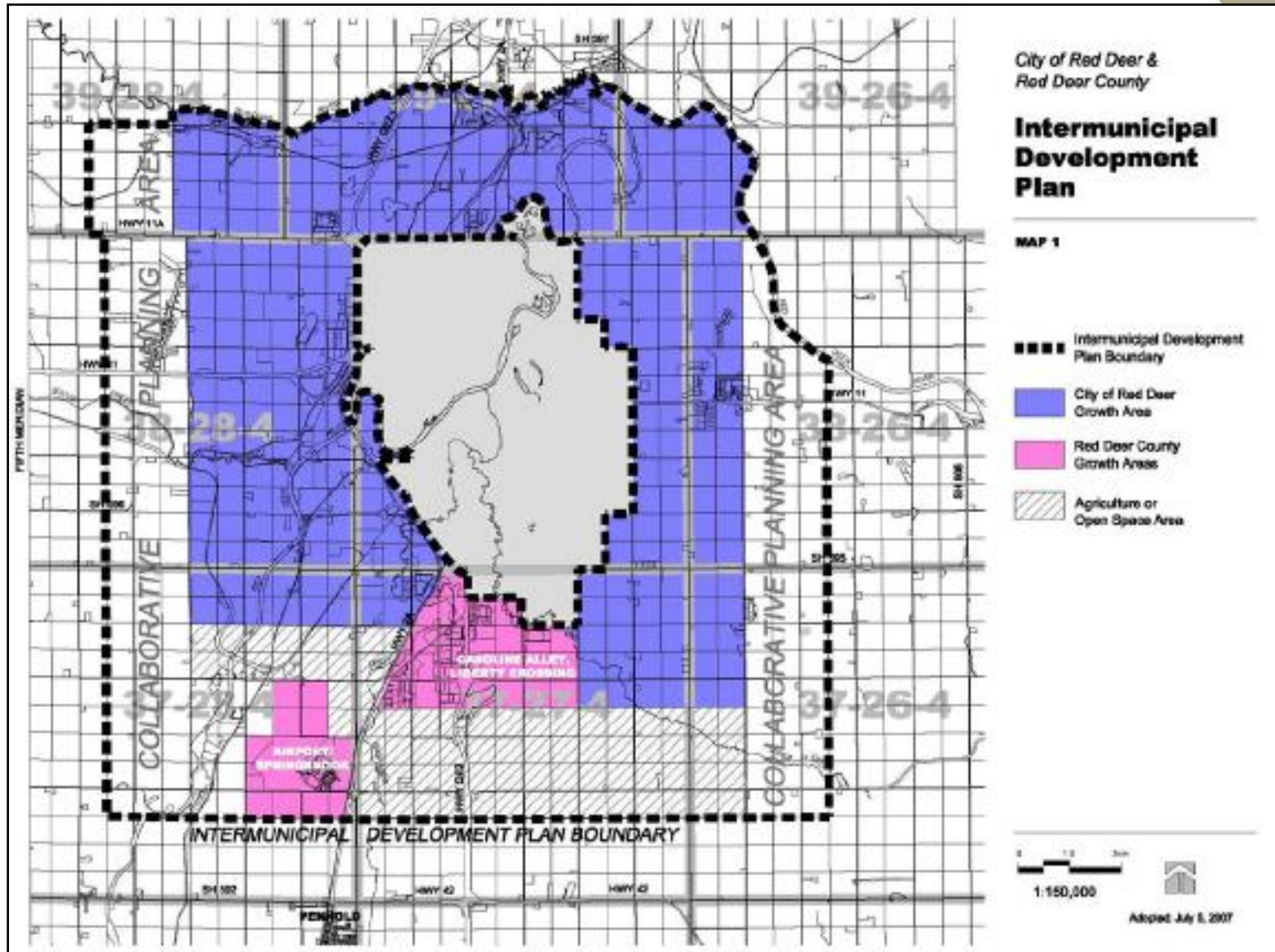
- Oil & Gas Liaison position
- Intermunicipal Development Plan (IDP)
- City's growth plans
- Oil & Gas activity within City's growth area
- Issues related to oil & gas

Oil & Gas Liaison

- Coordinate the review of all oil and gas applications and notifications
- First point of contact for oil and gas inquiries related to oil & gas
- Promotes and maintains positive relations with oil & gas companies
- Communicate the City's growth plans to oil & gas companies and involve them in the planning process
- Establish and maintain an internal oil and gas database
- Provide input in development of City strategies, policies and decisions relating to oil and gas activity
- Work with disaster services, emergency responders and oil & gas companies to prepare for emergency situations

Statutory Plans

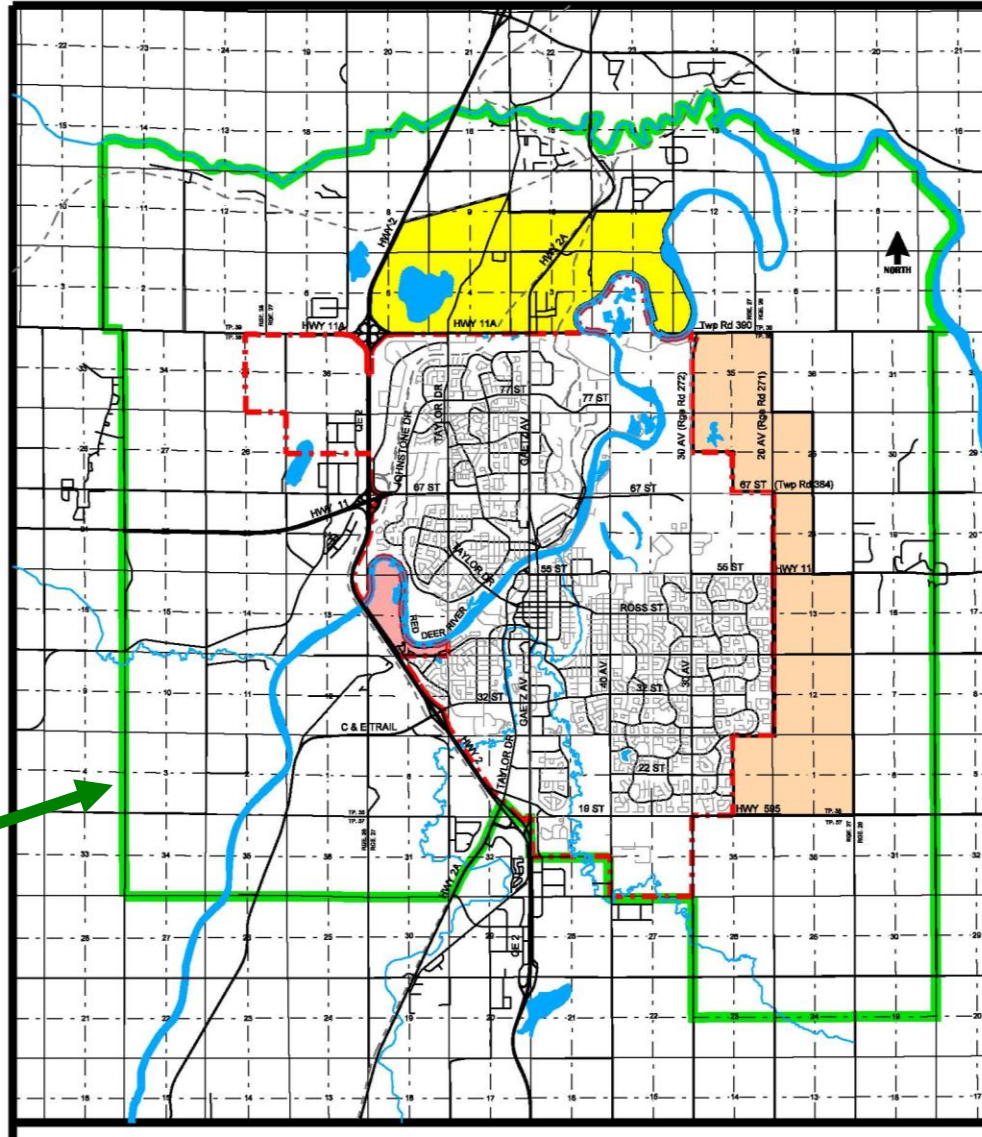
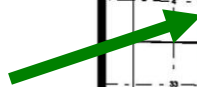
Intermunicipal Development Plan (IDP)



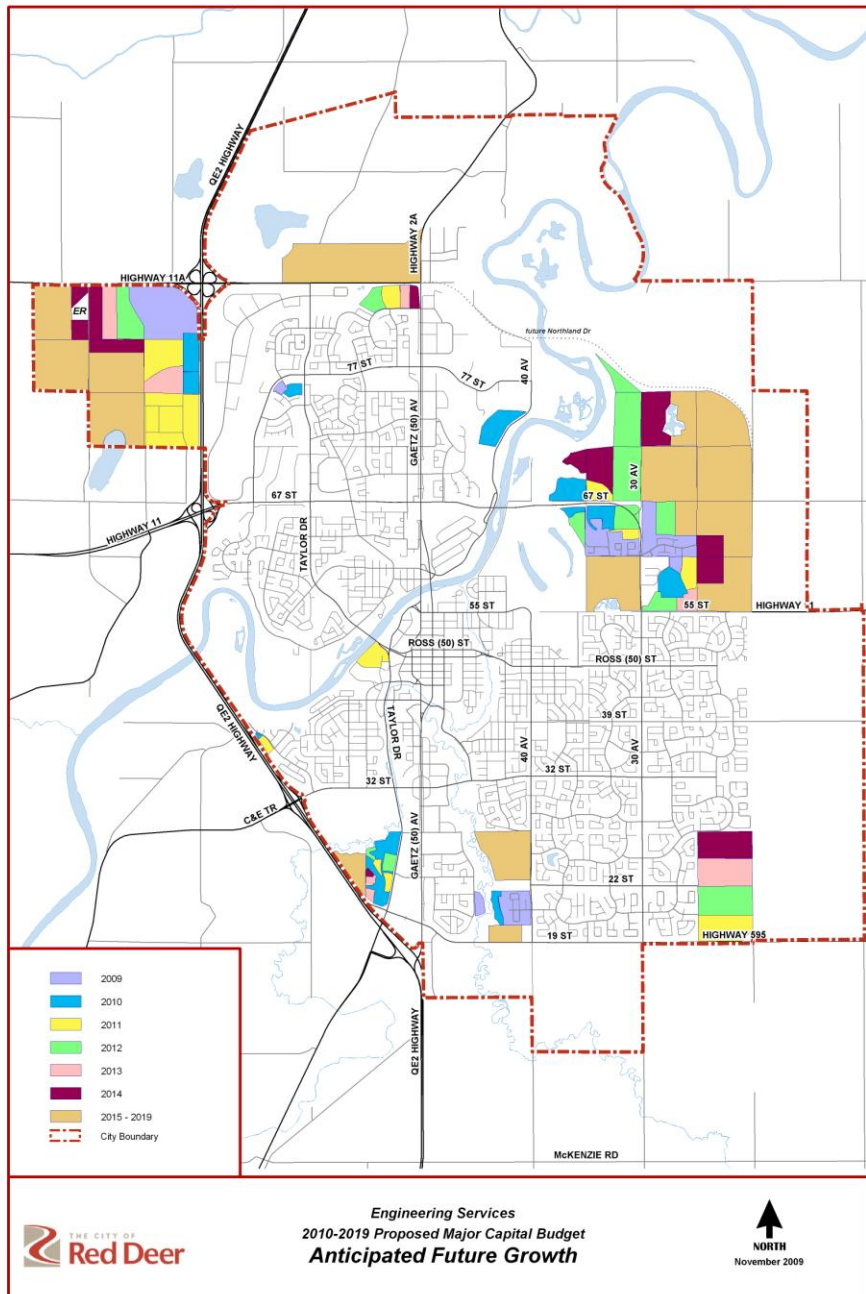
Annexation

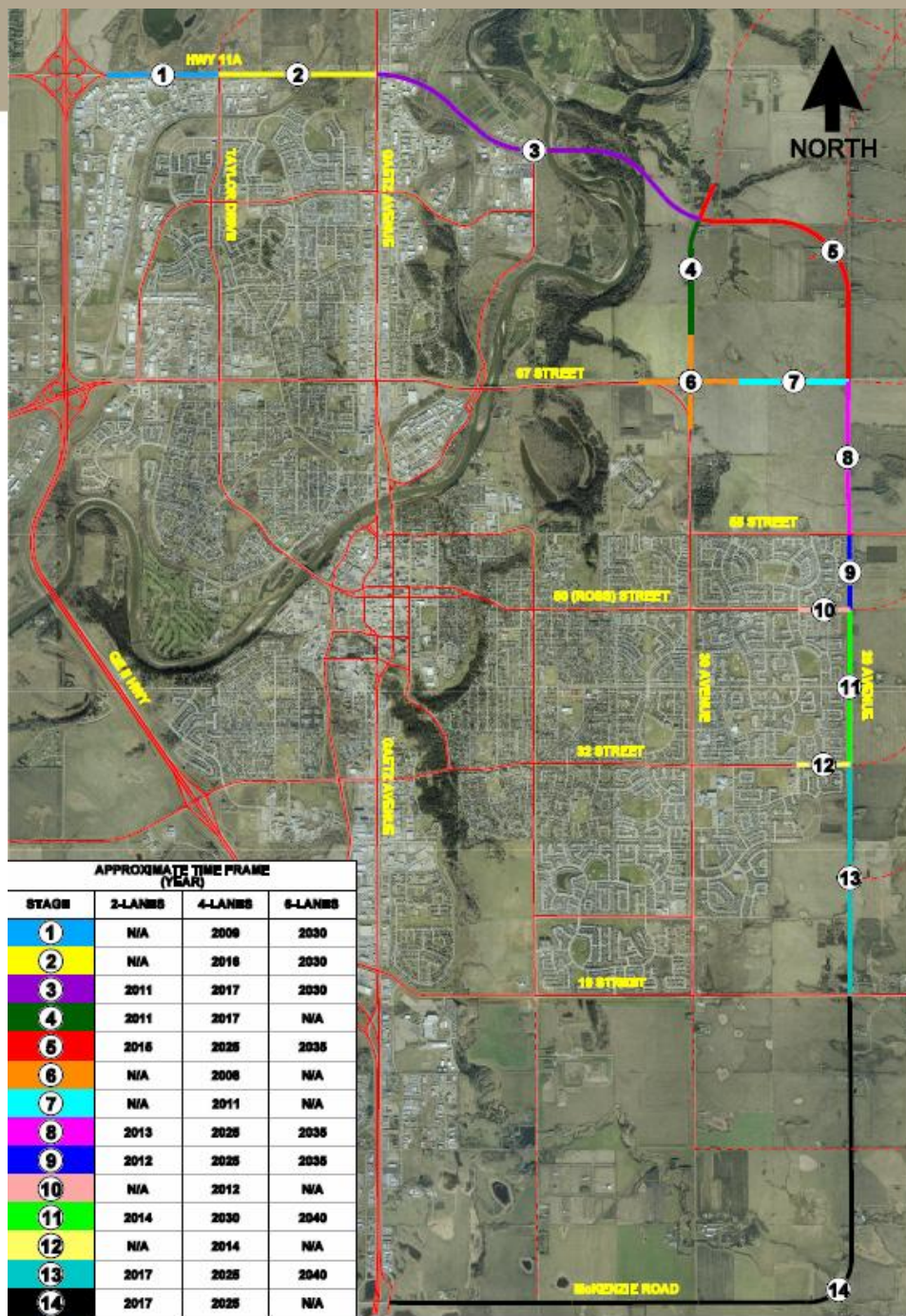
**IDP states that
entire City
Growth Area is
to be Annexed
by 2017**

**City Growth
Area (CGA)**



Anticipated Development Area (2010-2019)





Northland Drive

[illegible]

Oil & Gas Activity

- New wells have been drilled in the defined growth area in last few years
- Documented internal review process
- Wells & pipelines appropriately located to minimize impact on future surface development
- Process & Consultation Agreement
 - outlines City's plans for that area
 - anticipated life expectancy for the well
 - keep each other advised of plans

Oil & Gas Issues

- Setback restrictions
- Northland Drive – Gas Plant
- Abandoned wells
- Reclamation
- Mineral lease agreements
- Involvement in the planning process

Setback Requirements for Wells

- Sweet wells - 100 meters to permanent dwelling
- Level 1 sour wells - 100 meters to permanent dwelling
- Level 2 sour wells - 100 meters to permanent dwelling
 - 500 meters to urban center
- Level 3 sour well - 100 meters to permanent dwelling
 - 1500 meters to urban center

Setback Requirements for Pipelines

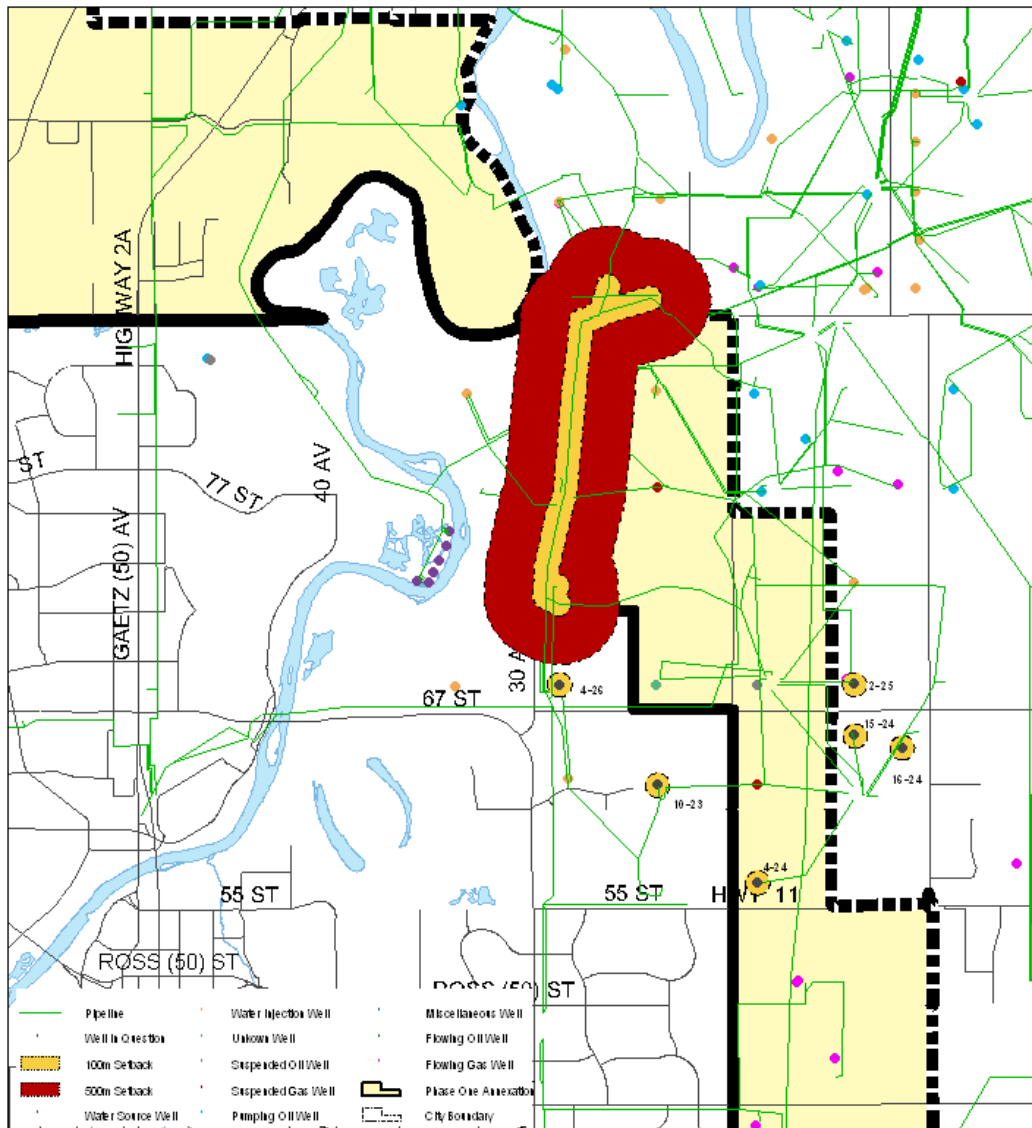
Sweet pipelines - edge of right-of-way

Level 1 sour pipeline - edge of right-of-way

Level 2 sour pipeline -100 meters to permanent dwelling
- 500 meters to urban center

Level 3 sour pipeline -100 meters to permanent dwelling
-1500 meters to urban center

Setback Distances



Agreement

- NAL is the current licensee for the sour wells and pipelines
- Started discussion in Oct 2006
- Agreement has now been reached
- Specific wells and the connecting pipelines will be abandoned next year
- Also the level 2 sour pipeline

Agreement

- This was a significant achievement for both the City and NAL
- Significant benefit for the landowners
- Through this process City and NAL have established a good working relationship

Northland Drive

- Ring road around the City connecting to Hwy 2
- In 2008 sent information letters stakeholders and held public meeting and open houses
- Gas plant located in Northland drive right-of-way

Northland Drive – Gas Plant



Northland Drive/Gas Plant

- Contacted the company
- Company was not aware of proposed ring road
- Considering options

Abandoned wells

- Have typically been incorporated into public land – parks, open space, golf course, roads
- Proposal to incorporate an abandoned well into a private lot
- NASP approved
- Discussed with licensee and ERCB
- Register caveat on land title

Abandoned wells

- Indemnity Agreement
 - acknowledgement of risk
 - development restrictions
 - identification
 - sketch showing location of abandoned well and 8 m access

Abandoned Wells

- Contamination
- Reclamation certificate
- Phase 1 environmental site assessment required for proposed development.
- Encouraging Licensee to determine if there is contamination

Remediation

- In Red Deer the City is the developer for 25 % of new residential subdivisions
- Significant contamination in soil and groundwater
- Remediation program
- Risk management plan being

Mineral lease agreement

- City donated mineral rights
- Old mineral lease agreements are difficult to interpret
- Royalty payments

Involvement

- Information sessions
- Draft NASP for review and comment
- Public safety

City of Red Deer

- Questions ???