

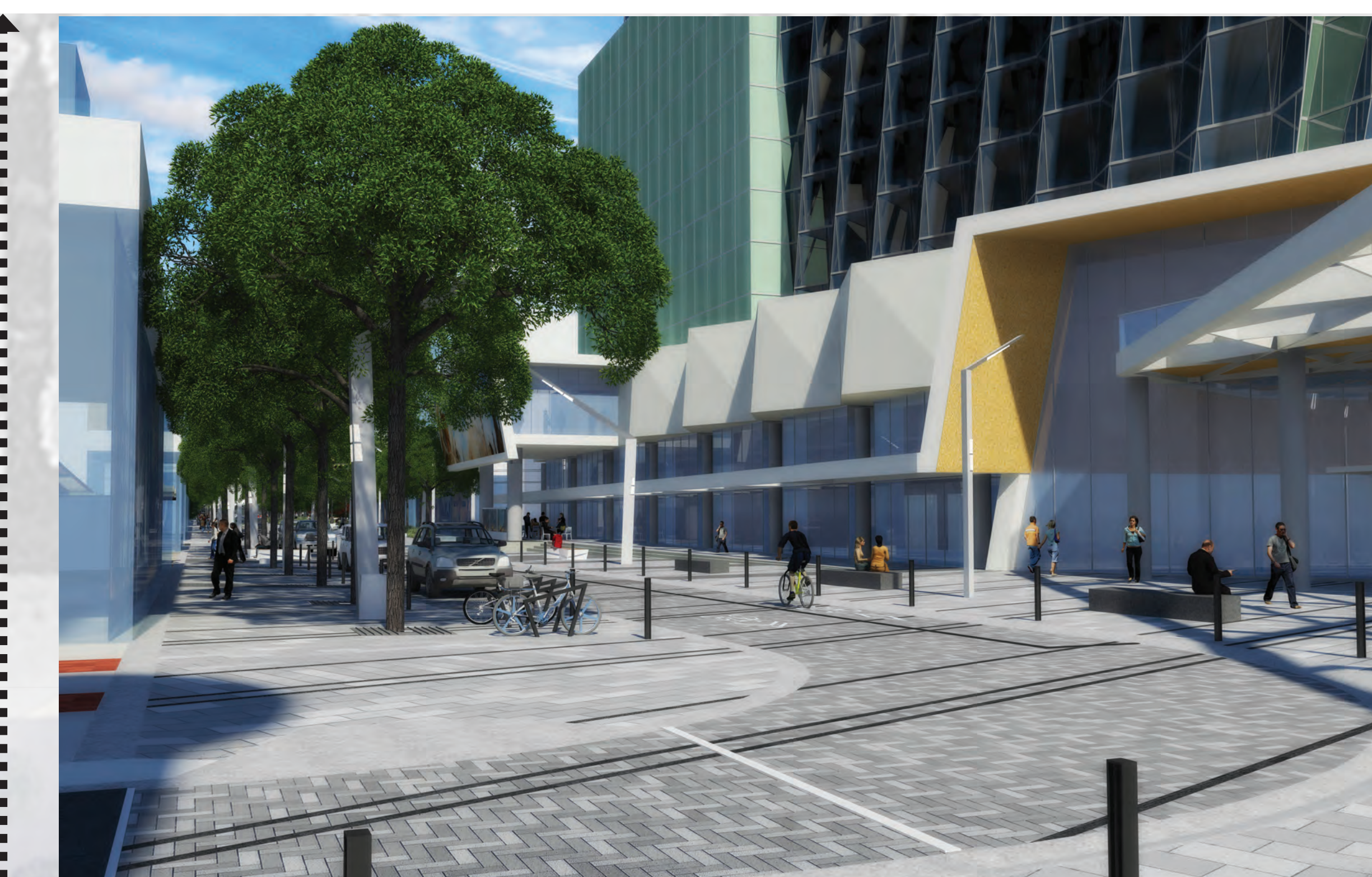
- MID-BLOCK 'PIAZZAS' |**
- 'carpet' of paving - highly decorative pattern
 - cluster seating
 - utility connections for events & vendors
 - settings for transitory art installations

- PLAZA | new city park**
- granite paved plaza with water feature (in-grade jets)
 - architectural canopy
 - large scale light elements
 - programmable space

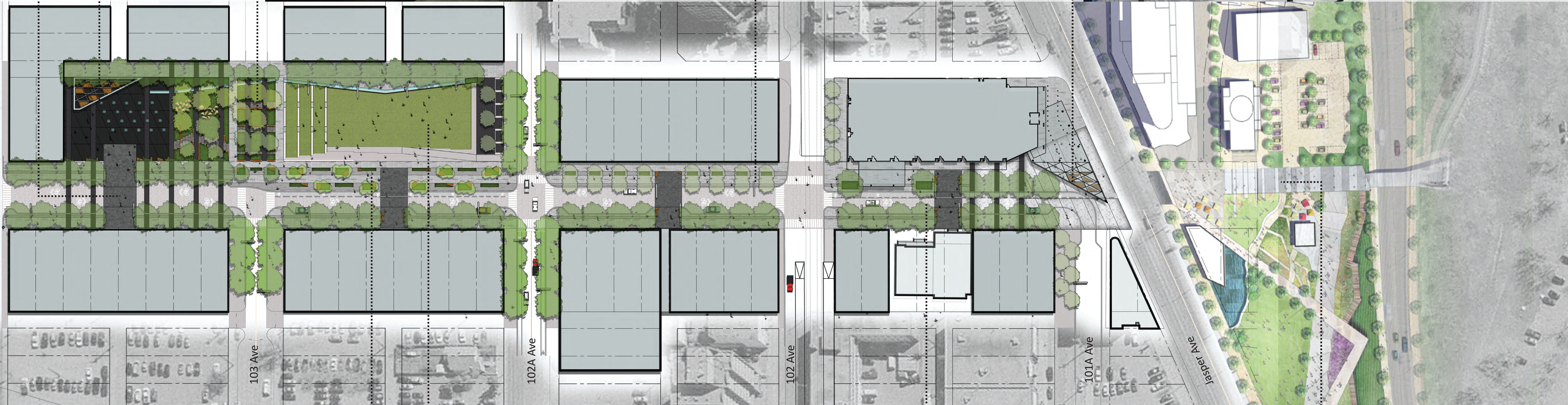


- GARDEN | new city park**
- granite slab paths
 - concrete and timber seat walls
 - linear water feature
 - boulder garden with fog/steam fountain
 - ornamental planting
 - rain garden at 103 Avenue right-of-way

- PROMENADE |**
- double row of canopy trees
 - planted openings with integral seating
 - cafe space at building frontage



- JASPER PLAZA |**
- paved plaza to match Jasper Avenue New Vision
 - plaza paving extends across Jasper Avenue
 - landmark hotel with extensions into the public realm
 - no through-access to Jasper Avenue



- L.I.D. PROMENADE |**
- open biofiltration beds
 - indigenous plantings
 - generous seating opportunities



- LAWN | new city park**
- culmination of water elements in water wall
 - sunken lawn, ~1.0m below sidewalk
 - grass terraces facing south
 - stairs and ramp on west and south edges
 - gallery piazza on south end
 - irrigation cistern beneath lawn



- ARMATURE HOTEL & 102 AVE |**
- canopy trees sheltering sidewalks
 - raised terrace & fireplace beneath hotel extension
 - multi-media public art opportunity



- RIVER GATE PARK | future**
- connects the Armature to the river valley
 - pedestrian bridge over Grierson Hill Road
 - commercial pavilions