

CHAPTER 3 - PROPOSED URBAN PARK BOUNDARY

To access Provincial Urban Parks Program, Phase II funding the City must clearly define the boundary of the new urban park.

The present development in the river valley system includes Capital City Recreation Park (CCRP), which was developed with Provincial funding, and a number of areas developed by the City. Urban Parks Program Phase II funds can be spent in any part of boundary of the new urban park where the planning and program requirements of the Province have been satisfied (such as completion of the master plan).

Operating costs for CCRP are funded from a provincial operating grant and municipally developed river valley parks are supported by the tax levy. However, to provide consistency of service levels throughout the river valley and ease of administration the City would like to merge the existing CCRP operating grant and the UPP Phase II operating grant.

The Province has agreed that the City may use the total funds from the two grants anywhere within the North Saskatchewan River Valley and Ravine System Urban Park boundary. Any new administration and accounting procedures for the two grants will be determined when the City is ready to access the Phase II operating funds.

For optimum flexibility and clarity in accessing capital and utilizing the two operating grants, it is recommended that:

- 1) The City approach the Province to expand the CCRP boundary to include municipally developed park areas (eg. Mill Creek Ravine, River Road).
- 2) The Boundary of the Urban Park Phase II be contiguous with the expanded CCRP boundary and extend through the river valley incorporating all lands identified in Priority 1 and 2 of the Master Plan.

Map 15 identifies the recommended park boundary.

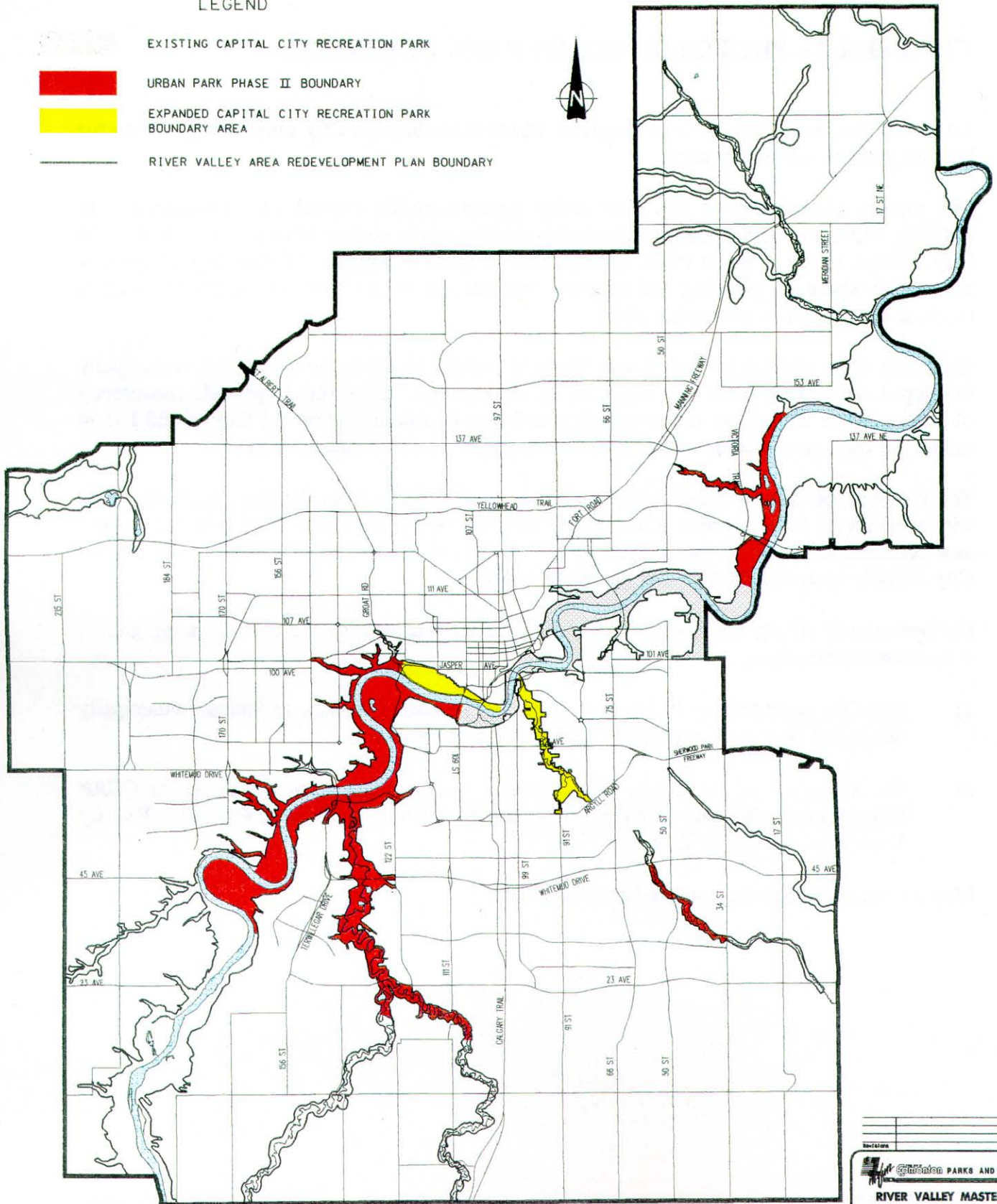
LEGEND

EXISTING CAPITAL CITY RECREATION PARK

URBAN PARK PHASE II BOUNDARY

EXPANDED CAPITAL CITY RECREATION PARK
BOUNDARY AREA

RIVER VALLEY AREA REDEVELOPMENT PLAN BOUNDARY



RIVER VALLEY MASTER PLAN	
URBAN PARK PHASE II BOUNDARY	
Landscape Arch. Grading, Drainage Design River Valley Drafting	Supervisor Design Director of Supervisor Director Date
Date May 1992 Scale 1" = 100'	Drawing No. 15 Design File Name RVP-15.dgn