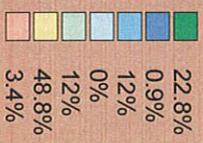
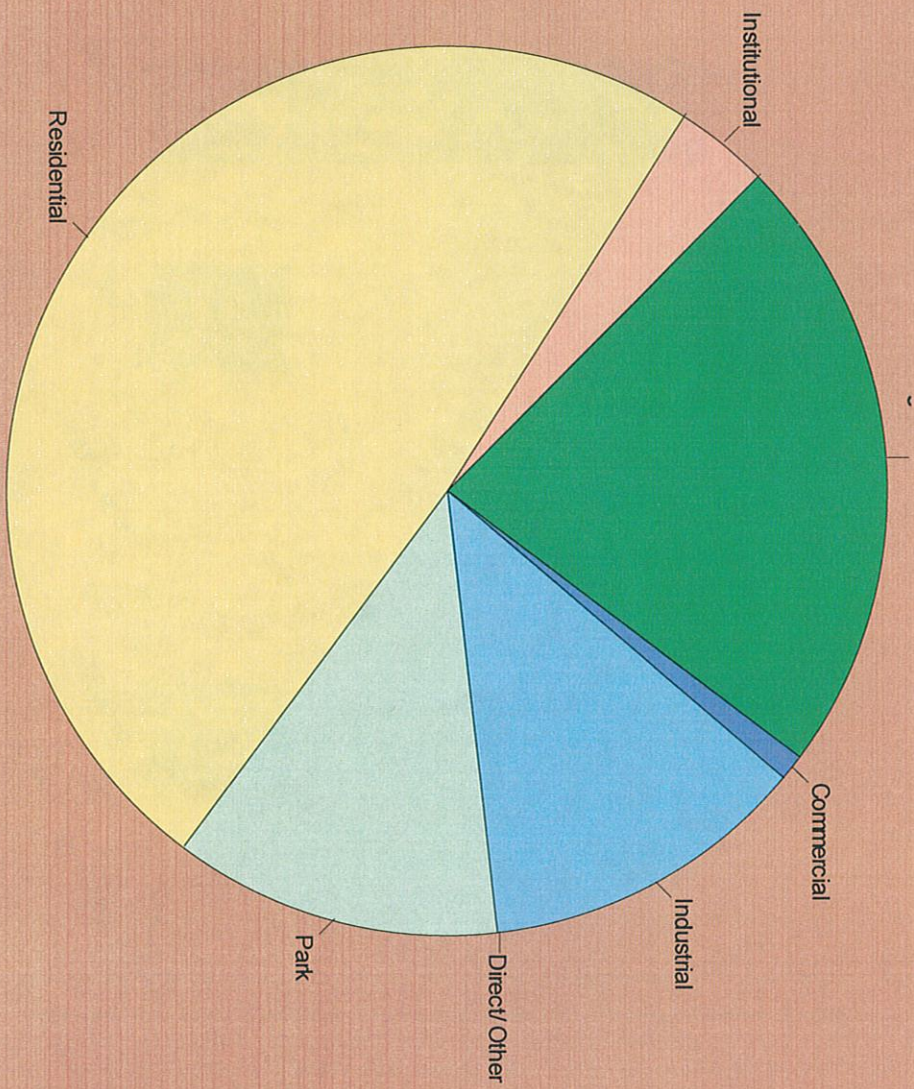


## Carbon Storage in Edmonton by Land Use





## Carbon Storage in Edmonton by Land Use

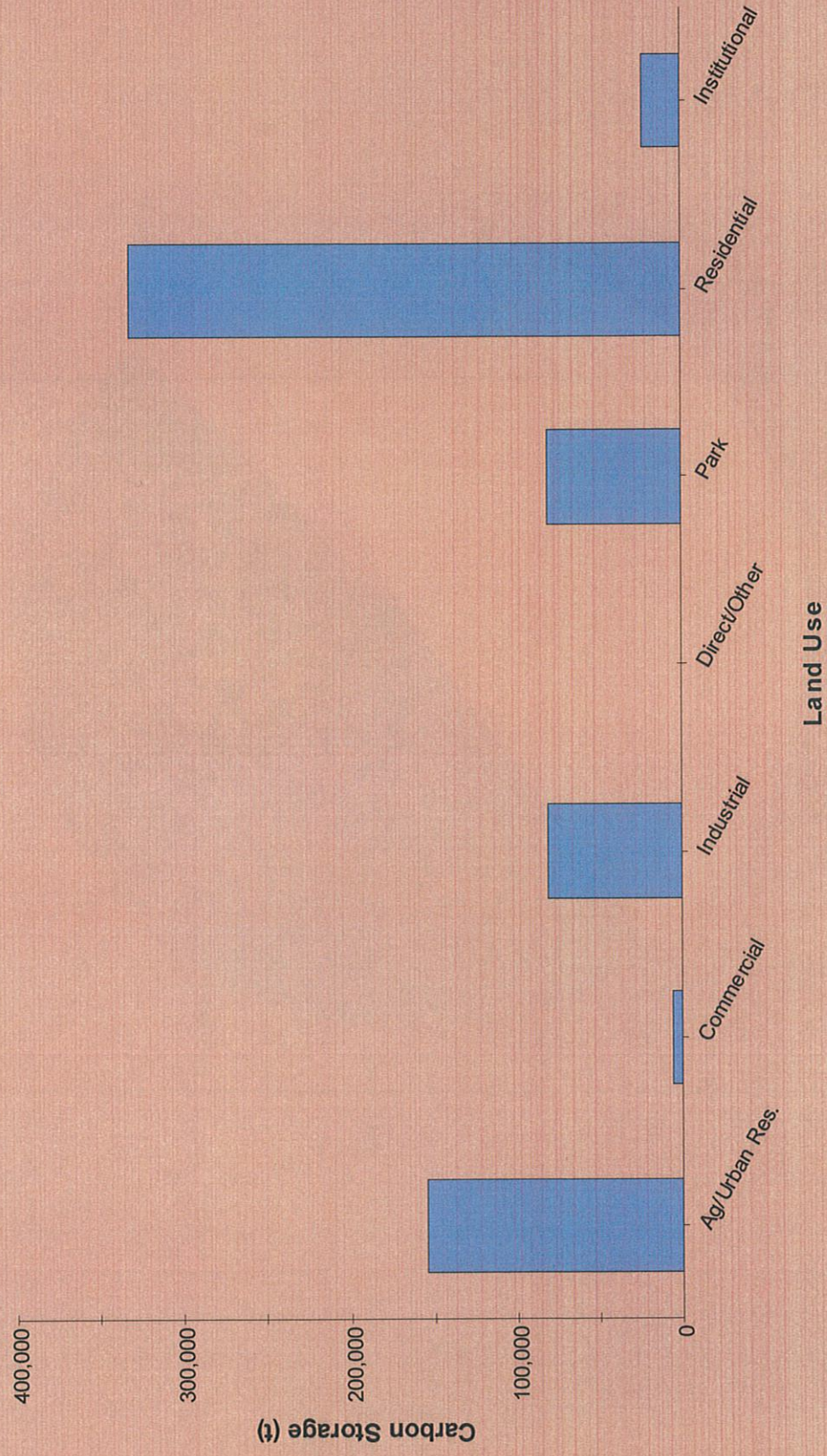


Carbon Storage (mt)		
Ag/Urban Res.	140413.78	22.8%
Commercial	5698.45	0.9%
Industrial	74099.56	12%
Direct/Other	9.19	0%
Park	73975.19	12%
Residential	300470.29	48.8%
Institutional	21107.49	3.4%



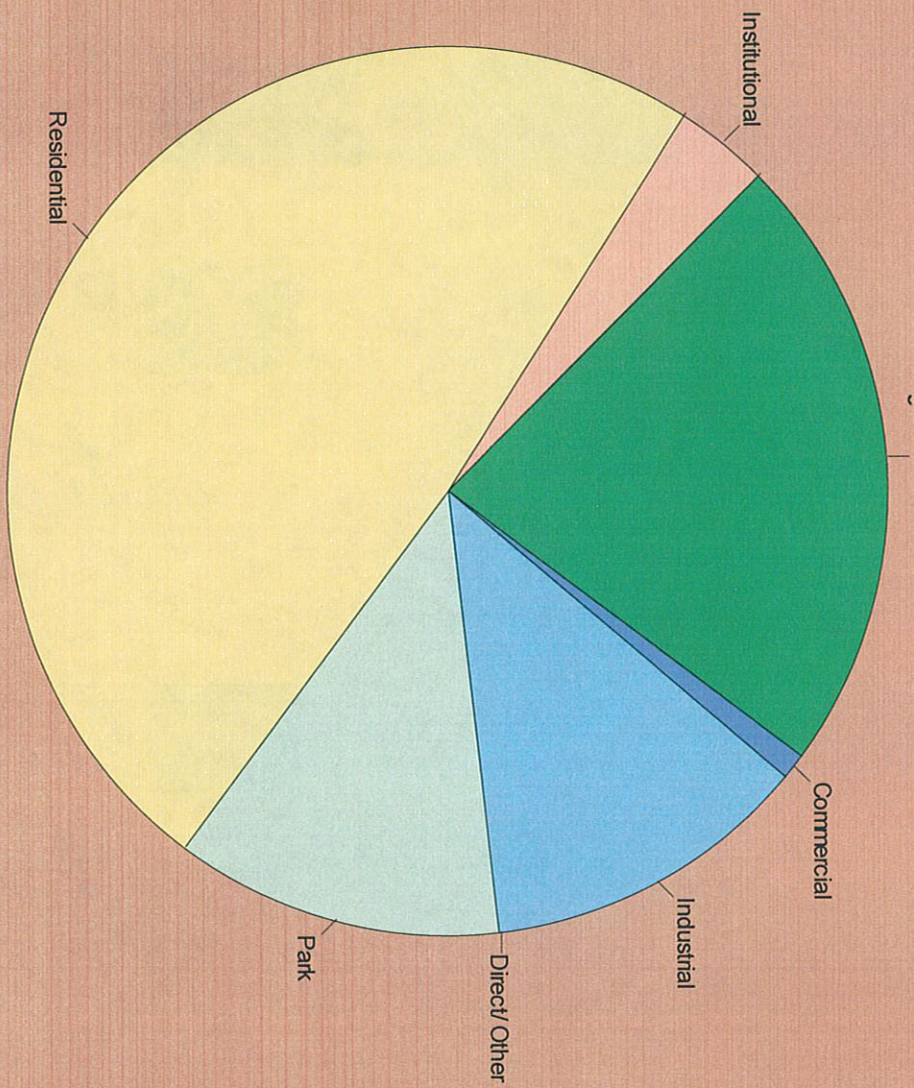


## Carbon Storage in Edmonton by Land Use





## Carbon Storage in Edmonton by Land Use



Carbon Storage (t)		
Ag/Urban Res.	154778.11	22.8%
Commercial	6281.401	0.9%
Industrial	81679.945	12%
Direct/Other	10.13	0%
Park	81542.852	12%
Residential	331208.401	48.8%
Institutional	23266.786	3.4%





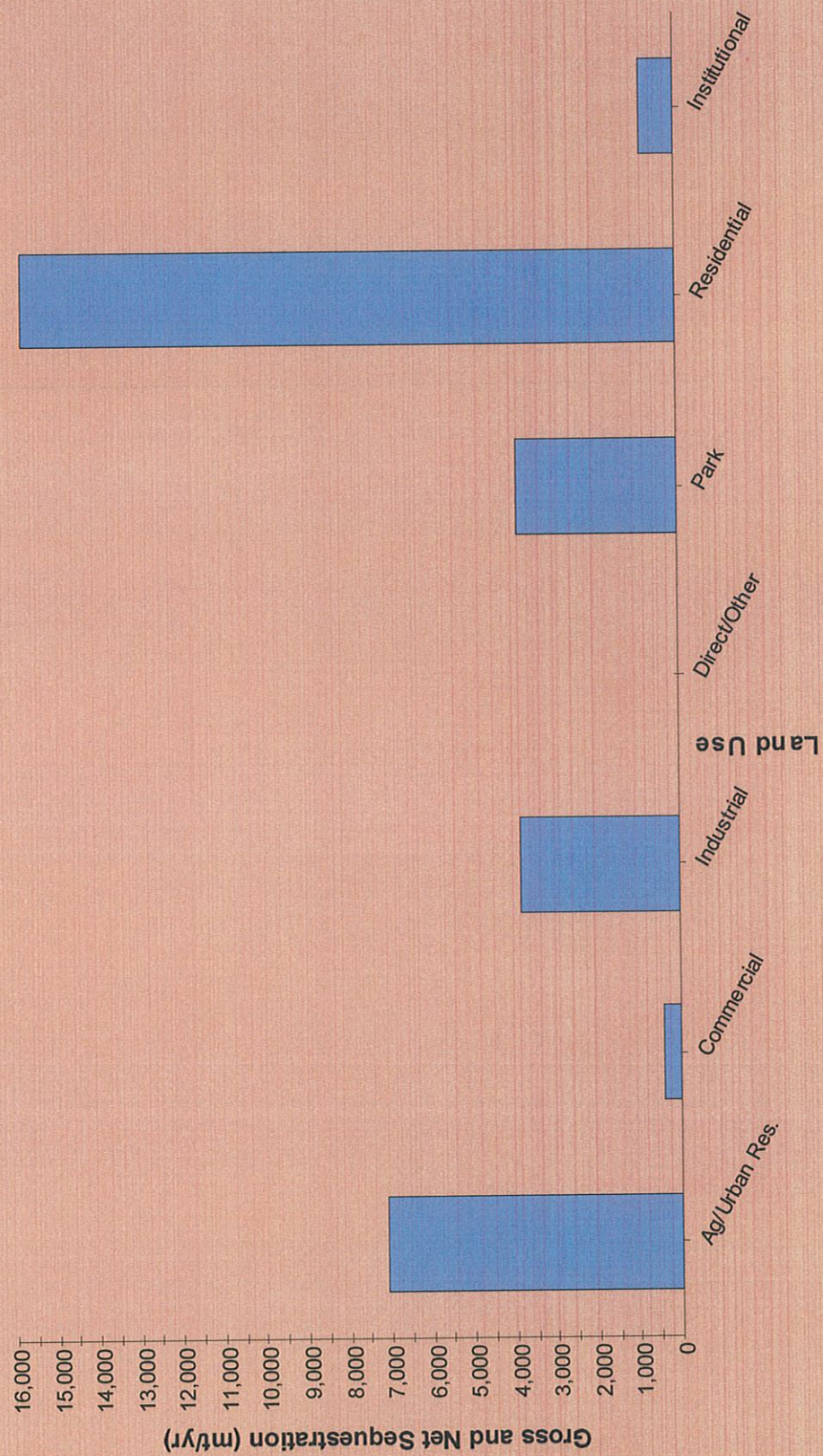
Carbon Storage Density in Edmonton by Land Use



Carbon Storage (kg/ha)	
Ag/Urban Res.	5654.3
Commercial	3725.4
Industrial	6716.9
Direct/Other	2.4
Park	10367.5
Residential	15633.6
Institutional	8528.4
CITY TOTAL	8798.6



Carbon Sequestration in Edmonton by Land Use



Carbon Sequestration (mt/yr)	
Ag/Urban Res.	7086.08
Commercial	424.76
Industrial	3852.33
Direct/Other	10.34
Park	3903.11
Residential	15744.97
Institutional	826.38



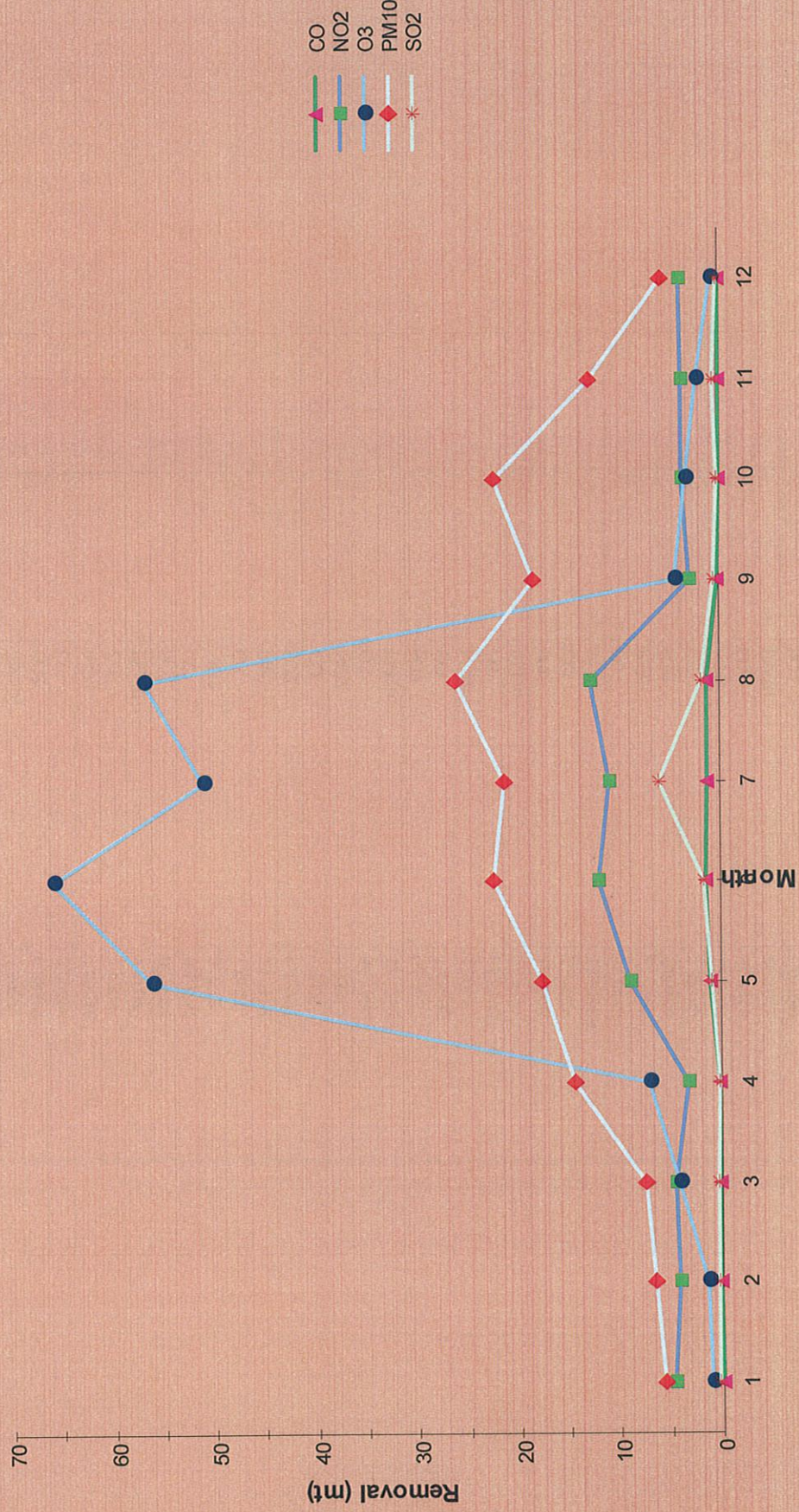
Carbon Sequestration in Edmonton by Land Use



Carbon Sequestration (kg/yr/ha)	
Ag/Urban Res.	285.3
Commercial	277.7
Industrial	349.2
Direct/Other	2.8
Park	547
Residential	819.2
Institutional	333.9
CITY TOTAL	455.1



# Pollutant Removal in Edmonton





Pollutant Removal		
Month	Pollutant	Amount (mt)
1	CO	0.05642
	NO2	4.76453
	O3	1.0674
	PM10	5.7019
2	SO2	0.44163
	CO	0.10538
	NO2	4.20042
	O3	1.3755
3	PM10	6.5952
	SO2	0.35397
	CO	0.09635
	NO2	4.59046
4	O3	4.1709
	PM10	7.6007
	SO2	0.36094
	CO	0.10781
5	NO2	3.3712
	O3	7.0821
	PM10	14.5604
	SO2	0.18291
6	CO	1.1471
	NO2	8.93352
	O3	56.1684
	PM10	17.7784
7	SO2	0.9368
	CO	1.45803
	NO2	12.06817
	O3	65.8993
8	PM10	22.5781
	SO2	1.59873
	CO	1.33059
	NO2	11.04399
9	O3	51.0445
	PM10	21.3856
	SO2	6.08966
	CO	1.37185
10	NO2	12.85631
	O3	56.9418
	PM10	26.1601
	SO2	1.91589
10	CO	0.17068
	NO2	2.92618
	O3	4.395
	PM10	18.5381
10	SO2	0.47337
	CO	0.09091



11	NO2	3.59306
	O3	3.2093
	PM10	22.3449
	SO2	0.2723
	CO	0.09131
	NO2	3.69134
	O3	2.2054
	PM10	12.8789
	SO2	0.48144
	CO	0.04623
12	NO2	3.89518
	O3	0.6869
	PM10	5.7195
	SO2	0.11103

